

MAPS

MAP 1

Map showing localities of included specimens (circles) and type localities (stars) of the species of the ***Rhinella arunco* Group** in southern South America. A map of Central and South America is shown for reference, with the magnified section demarcated.

MAP 2

Map showing localities of included specimens (circles) and type localities (stars) of the species of the ***Rhinella spinulosa* Group** in southern and western South America. Synonymized species in the present study are indicated between brackets immediately below its senior synonym. A map of Central and South America is shown for reference, with the magnified section demarcated.

MAP 3

Map showing localities of included specimens (circles) and type localities (stars) of the species of the ***Rhinella granulosa* Group** in South America and Panama. The type locality of *R. granulosa* is imprecise, and is indicated by a question mark. Synonymized species in the present study are indicated between brackets immediately below its senior synonym. Species not sampled in this study are indicated with an asterisk. A map of Central and South America is shown for reference, with the magnified section demarcated.

MAP 4

Map showing localities of included specimens (circles) and type localities (stars) of the species of the ***Rhinella crucifer* Group** in eastern South America. Synonymized species that are considered junior synonyms in the present study are indicated between brackets immediately below its senior synonym. A map of Central and South America is shown for reference, with the magnified section demarcated.

MAP 5

Map showing localities of included specimens (circles) and type localities (stars) of the species of the ***Rhinella marina* Group and *R. sternosignata*** (unassigned to group) in South America.

Synonymized species in the present study are indicated between brackets immediately below its senior synonym. Undescribed species showed with the same color of its sister species according to the analysis (see fig. 12). The type locality of *R. marina* is imprecise, which is indicated by a question mark. A map of Central and South America is shown for reference, with the magnified section demarcated.

MAP 6

Maps showing localities of included specimens (circles) and type localities (stars) of the species of the ***Rhinella veraguensis* Group** in Central and South America. Species not included in this study are indicated with an asterisk. Undescribed species showed with the same color of its sister species according to the analysis (see fig. 13). A map of Central and South America is shown for reference, with the magnified sections demarcated.

MAP 7

Map of localities of included specimens (circles) and type localities (stars) of part of the species of the ***Rhinella festae* Group** in western South America. Synonymized species in the present study are indicated between brackets immediately below its senior synonym. Undescribed species showed with the same color of its sister species according to the analysis (see fig. 13). The type locality of *R. truebae* is imprecise, which is indicated by a question mark. A map of Central and South America is shown for reference, with the magnified section demarcated.

MAP 8

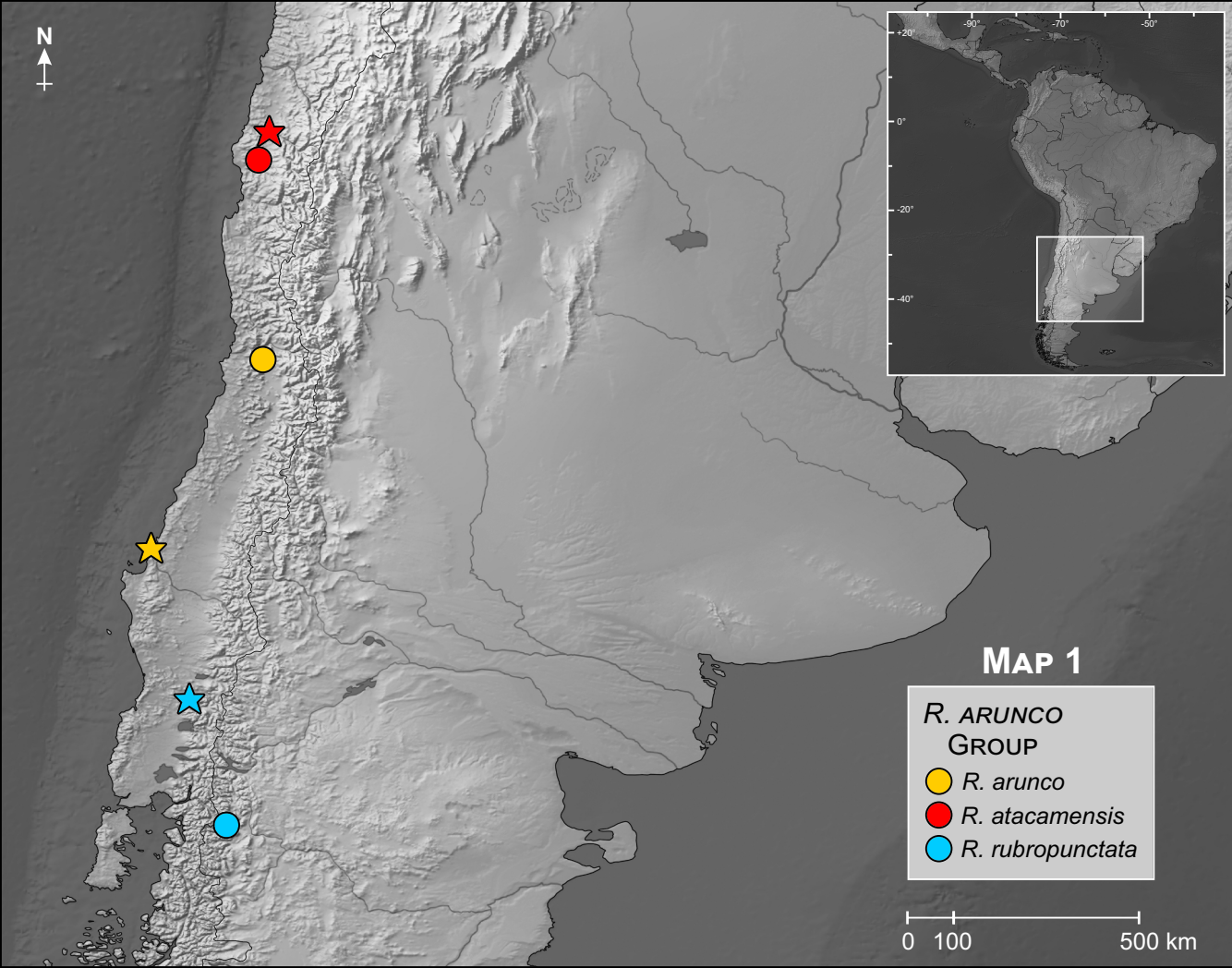
Map of localities of included specimens (circles) and type localities (stars) of **part of the species of the *Rhinella festae* Group** in western South America. Synonymized species in the present study are indicated between brackets immediately below its senior synonym. Undescribed species showed with the same color of its sister species according to the analysis (see fig. 13). A map of Central and South America is shown for reference, with the magnified section demarcated.

MAP 9

Map of localities of included specimens (circles) and type localities (stars) of **part of the species of the *Rhinella margaritifera* Group** in South America and Panama. Synonymized species in the present study are indicated between brackets immediately below its senior synonym. Undescribed species showed with the same color of its sister species according to the analysis (see fig. 14). The type localities of *R. acutirostris* and *R. margaritifera* are imprecise, which are indicated by question marks. A map of Central and South America is shown for reference, with the magnified section demarcated.

MAP 10

Map of localities of included specimens (circles) and type localities (stars) of **part of the species of the *Rhinella margaritifera* Group** in South America. Synonymized species in the present study are indicated between brackets immediately below its senior synonym. Species not sampled in this study are indicated with an asterisk. Undescribed species showed with the same color of its sister species according to the analysis (see fig. 14). The type localities of *R. ocellata* and *R. proboscidea* are imprecise, which are indicated by question marks. A map of Central and South America is shown for reference, with the magnified section demarcated.

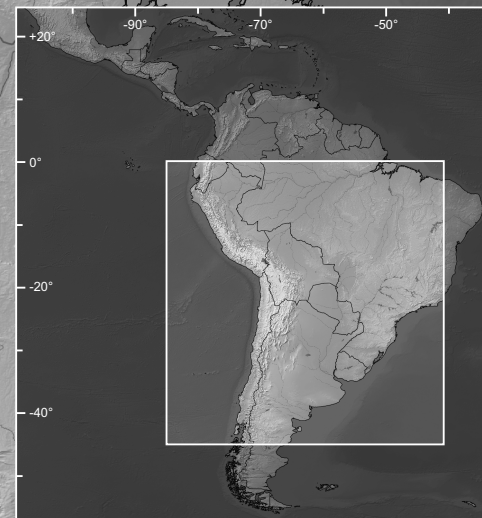




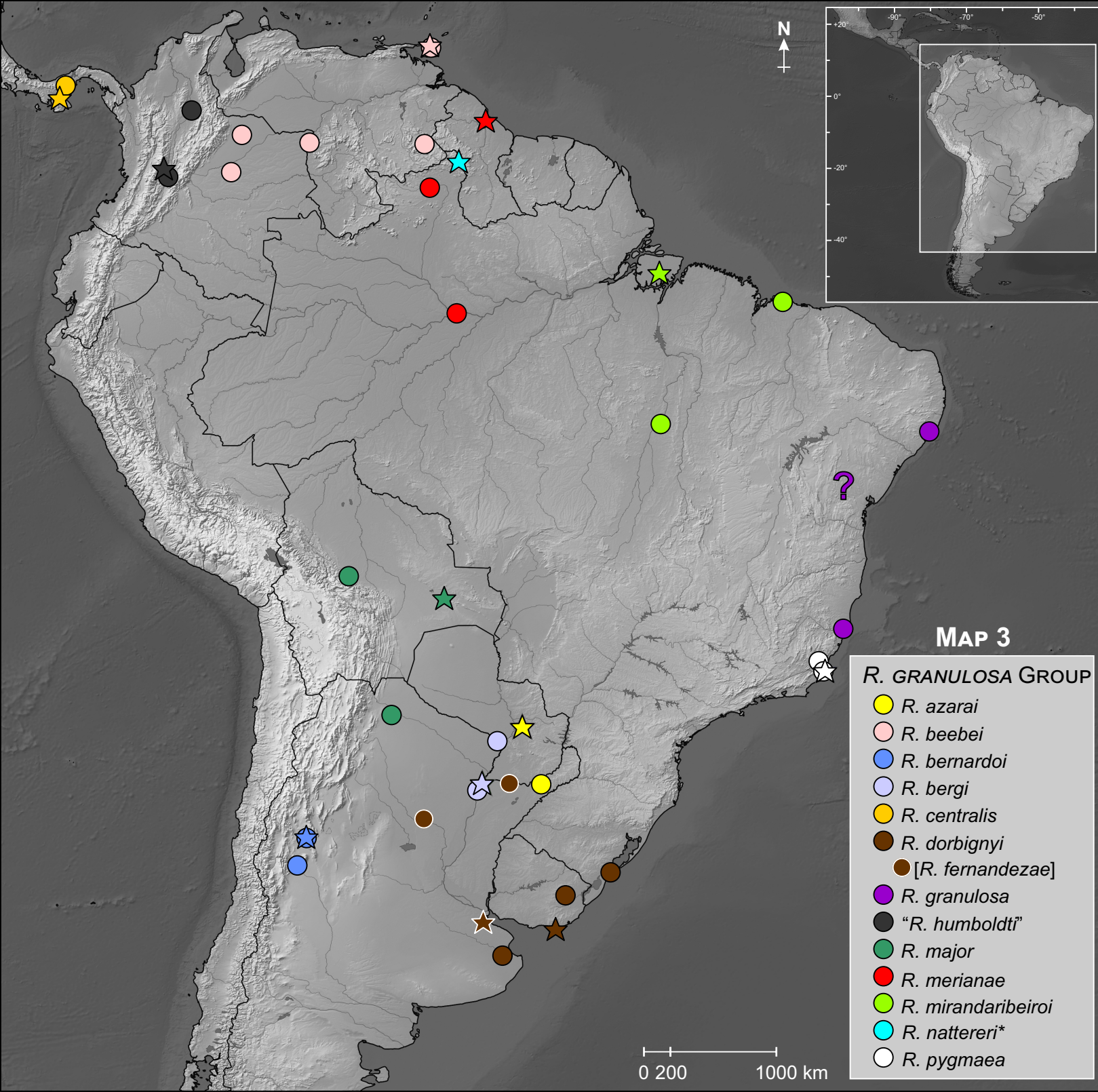
MAP 2

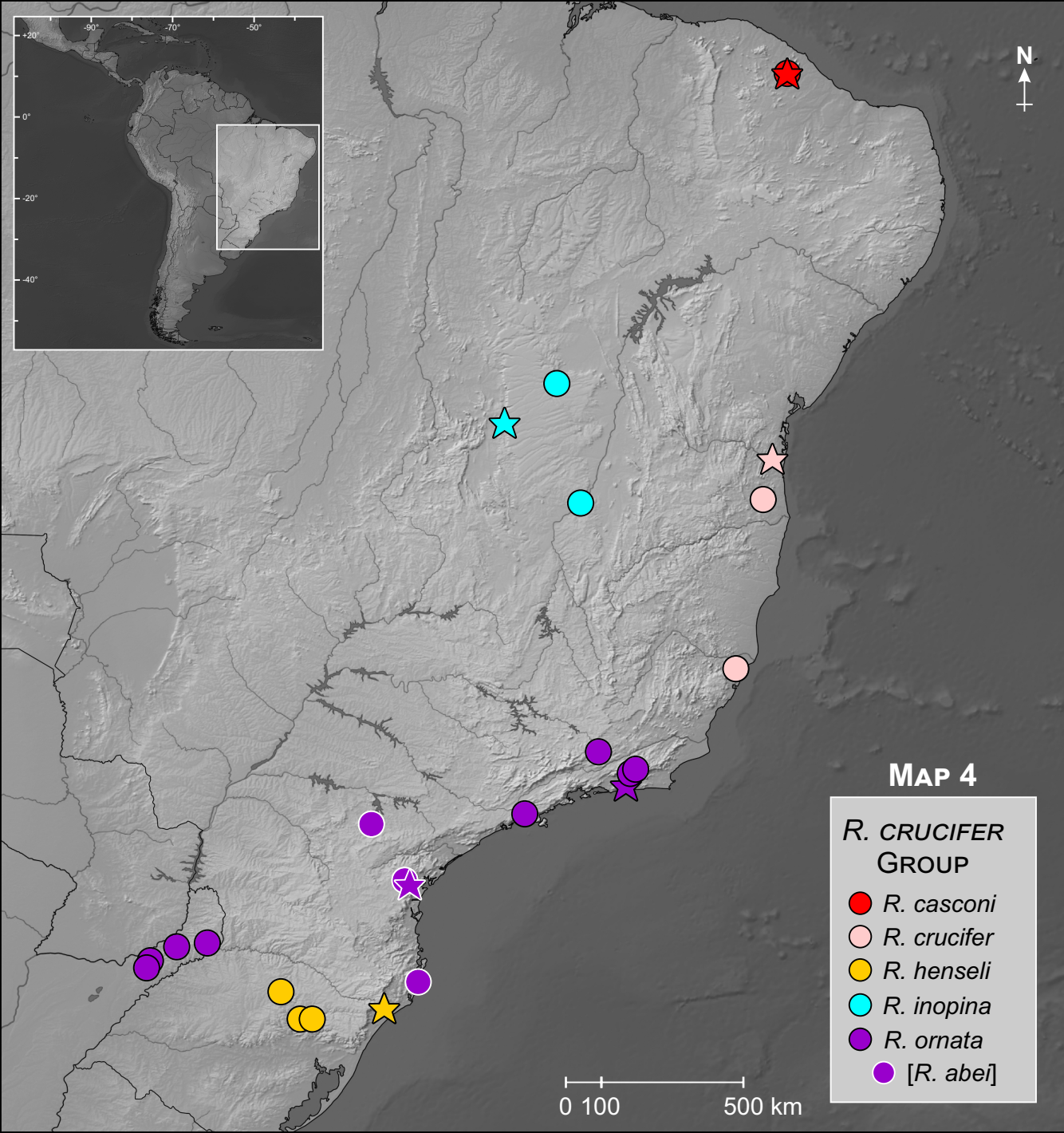
R. SPINULOSA GROUP

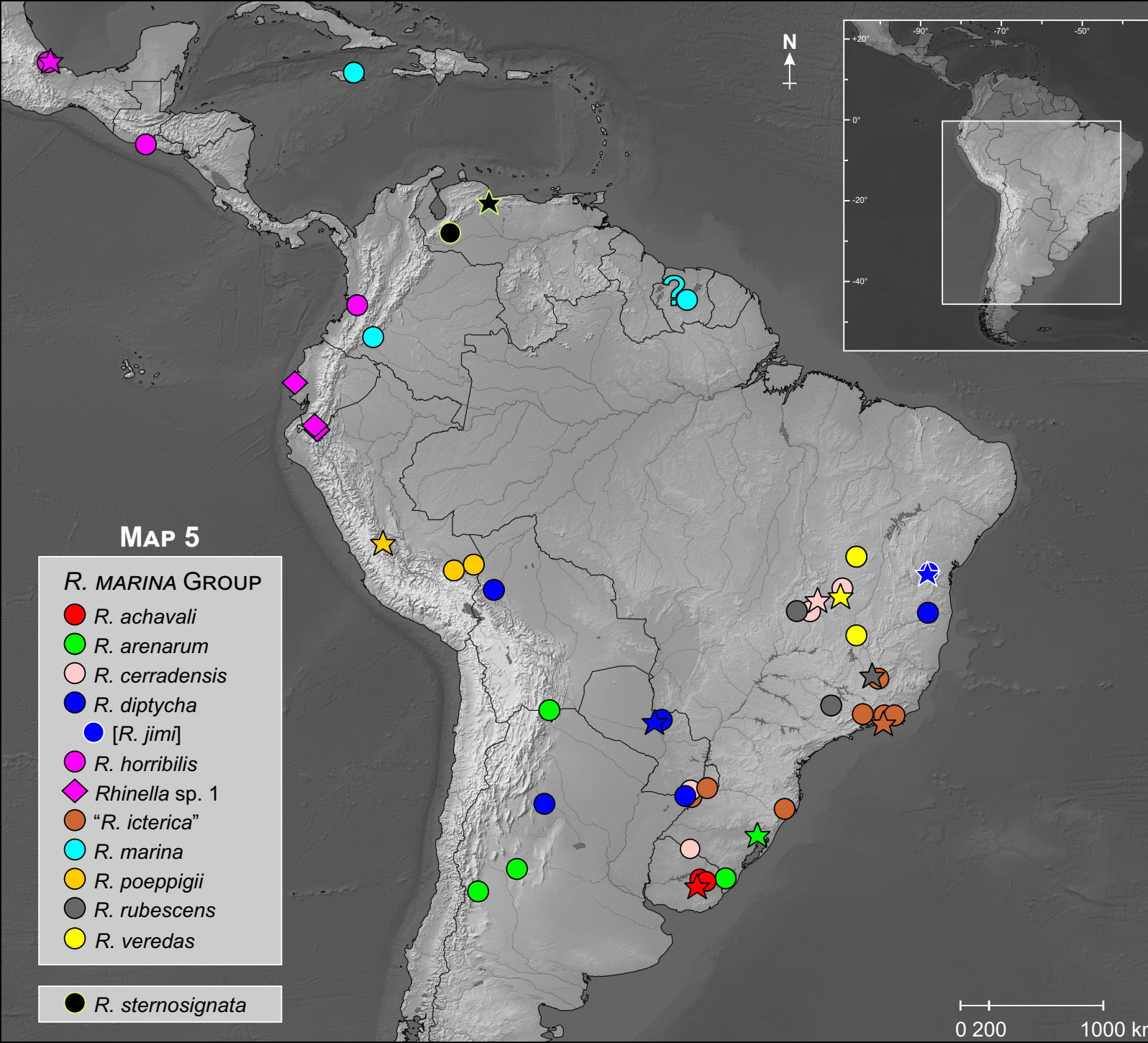
-  *R. achalensis*
-  *R. altiperuviana*
-  *R. cf. amabilis*
-  *R. gallardoi*
-  *R. limensis*
-  *R. papillosa*
-  *R. spinulosa*
-  [*R. arequipensis*]
-  *R. trifolium*
-  *R. vellardi*

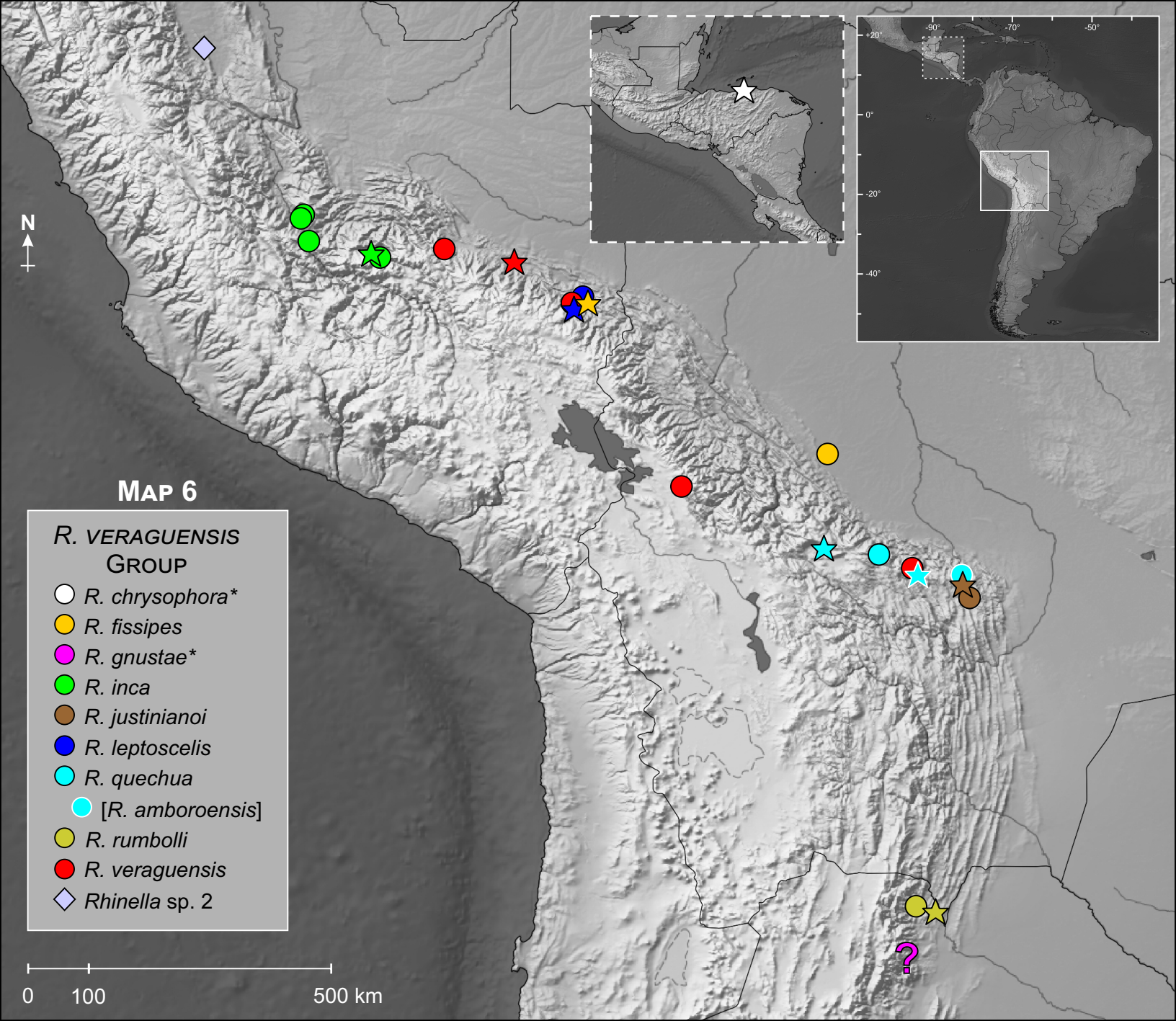


0 200 1000 km







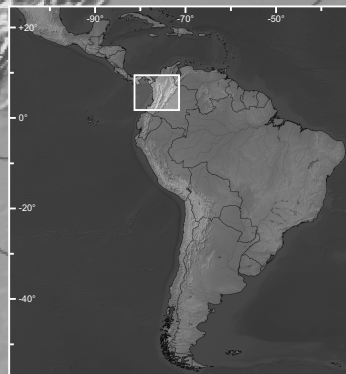


MAP 7

R. FESTAE GROUP (part 1)

- *R. acrolopha*
- *R. lindae*
- *R. cf. nicefori*
- *R. paraguas*
- ◆ *Rhinella* sp. 4
- *R. rostrata**
- *R. macrorhina*
- *R. ruizi*
- *R. tenrec*
- *R. truebae**

0 50 150 km



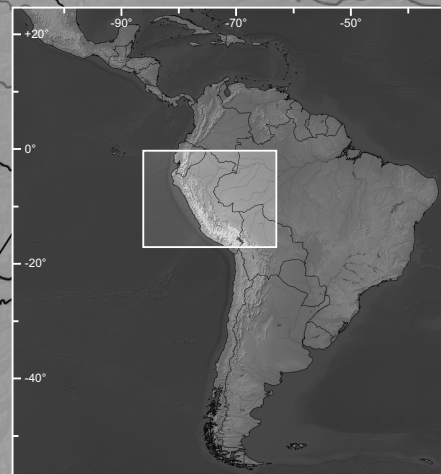


MAP 8

R. FESTAE GROUP (part 2)

-  *R. arborescandens*
-  *R. chavin*
-  *R. festae*
-  *R. lilyrodriguezae*
-  *R. manu*
-  *Rhinella* sp. 3
-  *R. cf. multiverrucosa*
-  *R. nesiotis*
-  *R. tacana*
-  *R. yanachaga*













0 100 500 km



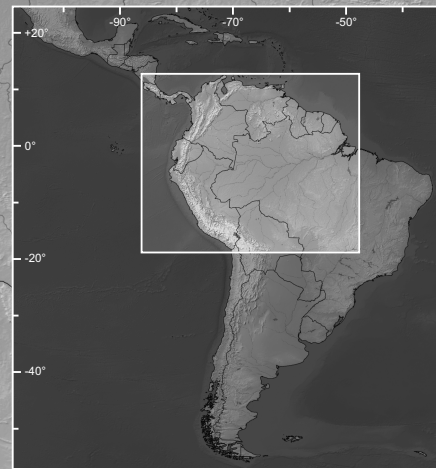


MAP 9

R. MARGARITIFERA GROUP (part 1)

-  *R. acutirostris*
-  *Rhinella* sp. 13
-  "*R. alata*"
-  *R. cristinae**
-  *R. lescurei*
-  *R. magnussoni*
-  *R. margaritifera*
-  [*R. martyi*]
-  *R. roqueana**
-  *R. sclerocephala*
-  *Rhinella* sp. 6
-  *Rhinella* sp. 7
-  *Rhinella* sp. 8
-  *Rhinella* sp. 9
-  *Rhinella* sp. 10
-  *Rhinella* sp. 11
-  *Rhinella* sp. 12

0 200 1000 km





MAP 10

R. MARGARITIFERA GROUP (part 2)

- "*R. castaneotica*"
- *R. dapsilis*
- [*R. gildae*]
- *R. hoogmoedi*
- *R. iserni*
- [*R. yunga*]
- *R. ocellata*
- *R. proboscidea*
- *R. sebbeni**
- *R. scitula*
- [*R. paraguayensis*]
- *R. stanlaidi*
- ◆ *Rhinella* sp. 5
- ◆ *Rhinella* sp. 14
- ◆ *Rhinella* sp. 15

