

The 1938 Archbold Expedition

One of many outlines written
by Rand.
Prior to expedition

The purpose of the Archbold Expedition to New Guinea is to collect information concerning mammals, birds, and plants. This field work includes the preparation of specimens for scientific study as well as the recording of facts concerning their habits. Forms of life such as amphibians, reptils, insects, and other invertebrates are taken as opportunity offers. Data on the topography is recorded only as it relates to the more specific problems of bird and mammal distribution.

To facilitate transportation the expedition is equipped with a Consolidated Flying Boat (PBY2). This 14 ton flying boat with its wing spread of 104 feet has a cruising radius of 4000 miles, at a speed of 125-150 miles per hour with a pay load of 6000 lbs. The rapid take-off of this plane makes it suitable for transport in such regions as New Guinea where there are only a few rivers or small lakes on which to light. It will be used to carry men and equipment to small inland bodies of water near which the subsidiary base camps will be located and to deliver food and supplies by parachute when suitable port is not near by.

The tenative plans are as follows: The main base camp of the expedition is to be situated at Hollandia, Netherlands New Guinea (Possibly at Sentani Lake a few miles inland from Hollandia) on the north central coast of the island. From here there will be a series of three or four reconnaissance flights over the central range of mountains in the vicinity of Mt. Wilhemina to determine the suitability of Lake Habbema as a port for the plane and as a place to establish a

RIGHT OF WAY

2/4

subsidiary base camp. Lake Habbema, situated approximately 175 miles southwest of Hollandia near the summit of Mount Wilhemina at 11000 feet altitude, is reported to be four to six kilometers long with low treeless shores. If so it will make a good port for the sea plane. A portion of the inland party and their equipment are to be taken to Lake Habbema to establish the inland or subsidiary base camp. Here a large store of food will be laid down as a precautionary measure. If accident to the plane occurs this food will maintain the inland party while a relief ship is secured. The stores laid down, the rest of the inland party, consisting of the collectors and the transport man, will be flown there. Should the Dutch Government see fit to include an observer or police officer, he also will accompany the inland party.

Collecting will be carried on at Lake Habbema while the transport man with carriers will make excursions to higher altitudes, find suitable camps, and have food supplies delivered by parachute. Then, collecting finished at Lake Habbema, the collecting party will move up to this new camp. In this manner the transport man will make trails and camps which will be used by the collectors upon finishing their work in the adjoining area. This division of the inland party permits the collectors to devote the maximum time to their work. There will be three camps other than the one at Habbema, one above and two below, varying in altitude from 6000 to 14000 feet.

The work finished in the region of Lake Habbema the entire party will be moved to the Mamberamo River (100 ft.) and here the second subsidiary base camp established. Here a similar program will be worked out as at Habbema with the

RIGHT-WIFE WAY

RECENT

RECENT

transport man going ahead making trails and camps at the desired localities which are to be later utilized by the collectors. There are to be three camps above the river in this region, the highest of which will be at approximately 5000 feet elevation.

Time permitting a third subsidiary base camp will be established in a marshy region on the lower Mamberamo River.

The material from these nine different collecting localities will give us a cross section of the fauna and flora of the northern slopes of the Snow Mountains from the tropical jungle up to and including the snow line.

The altitudes at which camps have been proposed and the length of time to be spent at each is tentatively outlined below:

From Lake Habbema

14000 ft. 3 weeks
11000 ft. 1 month
8000 ft. 1 month
6000 ft. 6 weeks

From the Mamberamo

5000 ft. 3 weeks
3000 ft. 6 weeks
1500 ft. 4 weeks
100 ft. 4 weeks

Marsh habitat 4 weeks

Total: 9 months, 2 weeks

In addition to the time involved in collecting, considerable time will be necessary for moving and arranging for moving, thus bringing the total time spent in the country to at least a year. After the work as outlined above is completed it may prove possible to collect in some of the isolated mountains near the coast.

RIGHT-OF-WAY

END

ALL CONTENTS

4/4
The personnel of the expedition is as follows:

To remain at the base camp and superintend flying:

Leader of the expedition	Mr. Richard Archbold
Pilot	Mr. Russell R. Rogers
Radio operator	Mr. Raymond E. Booth
Radio operator	Mr. Harold G. Ramm
Flight Mechanic	Mr. Gerald D. Brown

Inland party:

Assistant leader and ornithologist	Dr. Austin L. Rand
Mammalogist	Mr. William B. Richardson
Botanist	Mr. L. J. Brass
Transport man	?

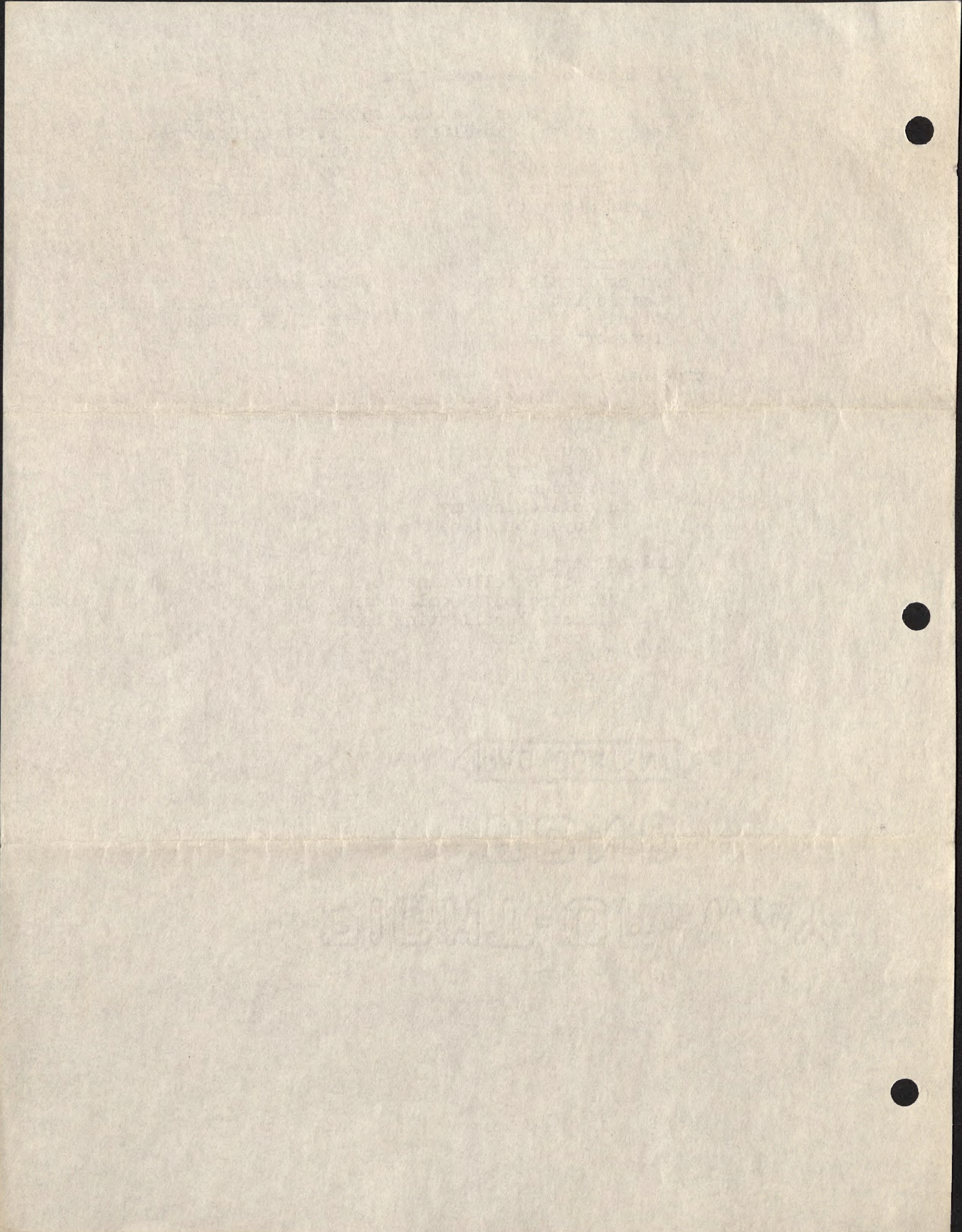
Native help:

Base camp (five men present most of time)

- 1 cook
- 1 house boy
- 1 wash boy
- 1 gardener
- 1 collecting boy
- 9 boys for plane

Inland party

- (Rand) 3 collecting boys
- (Richardson) 3 collecting boys
- (Brass) 3 collecting boys
- 45 carriers
- 2 cooks
- 1 cooks helper



INDEX TO THE LOCALITIES IN THE PAPUAN REGION,

at ~~ON WHICH BIRDS WERE COLLECTED~~ *have been*

Aicora River

St. Aignan Island (=Misima), Louisiade Arch.

Mt. Albert Edward, South-east New Guinea

Alcester Island, Woodlark group

Amberbaken, Vogelkop

Amberbaki Mts., Vogelkop

Ambernoh River, -Mamberano

Amphlett group, D'Entrecasteaux Arch.

Andai, foot of Arfak Mts.

Anga bunga River, South-east New Guinea

Anggi Lakes, Arfak Mts.

Anggi gidji, Arfak Mts.

Ansus, Jobi Island

Arfak Mts.

Aroa River, South-east New Guinea

Aru Islands

Augustahafen

Avera, Aroa River

Awaiama Bay

Rand, A.L.

1/17

(cont'd.)

INDEX TO THE LOCALITIES IN THE PAPUAN REGION,

ON WHICH BIRDS HAVE BEEN COLLECTED

Alcock River

St. Michael Island (Mila), Lonsdale Arch.

St. Albert Edward, South-east New Guinea

Alcock Island, Woodlark Group

Amberoken, Vogelkop

Amberoken Mts., Vogelkop

Amberoken River, -Mamberamo

Amphlett group, D'Entrecasteaux Arch.

Ambo, foot of Atak Mts.

Ambo River, South-east New Guinea

Ambo Lakes, Atak Mts.

Ambo Mts., Atak Mts.

Ambo, foot of Atak Mts.

Atak Mts.

Atak River, South-east New Guinea

Atak Islands

Ambochalen

Atak River

Ambo Bay

Bailalla River, Gulf of Papua

Barkai Island

Baroka, Bioto Creek Hall Sound

Batanta, Western Papuan Islands

Bataviabivak, Mamberano River

Mt. Batchelor, Owen Stanley Range

Bella Vista, Central Division of Papua

Blak Island, Geelvink Bay

Bian River

Bihagi, Mambare River

Biolowat, Watut River district

Bioto Creek, Hall Sound

Boirave, Orangerie Bay

Bondey, Geelvink Bay, Wandammen district

Bongu,, eastern part of Astrolabe Bay

Bon_vouloir group, Louisiade Archipelago

Bubui River, near Finschhafen

Bulolo River, Tributary of upper Watut River

Butaueng, near Finschhafen

Bailiia River, Gulf of Papua

Baitat Island

Batoka, Bito Creek, Hali Sound

Batana, Western Papua Islands

Batavilivak, Mamberamo River

Bt. Batoneior, Owen Stanley Range

Bela Vinea, Central Division of Papua

Bian Island, Geelvink Bay

Bian River

Bihagi, Mambero River

Blowout, West River district

Bito Creek, Hali Sound

Bolreva, Orange Bay

Bonday, Geelvink Bay, Sandaman district

Bongat, eastern part of Asolo Bay

Bon Voinier group, Lontalade Archipelago

Bopai River, near Tinschhafen

Bulolo River, tributary of upper Wapik River

Busanang, near Tinschhafen

Mt. Cameron, Owen Stanley Range

Chads Bay, =Awaiama Bay, west of East Cape
Charles Louis Mts., western part of Nassau Range
Chogeri ?=Sogeri inland of Port Moresby at the
headwaters of Laloki River.

Chogueri District = Sogeri District.

Cloudy Bay, Eastern Division of Papua

Collingwood Bay, South-east New Guinea

Conflict group, Louisiade Archipelago

Courtance Island =Coutance Island, west of Clondy Bay

Cyclop Mountains, northern Dutch New Guinea

Dall mannshafen =Wewak, Aitape district

Dampier Island = Karkam

Daru Island, Western Division of Papua

Dawong, Herzog Mts.

Deboyne Is., Louisiade Arch.

Deliverance Island, Torres Straits

Mt. Derimapa, Weyland Mountains

Digul River, south New Guinea

Dobbo, Aru Islands

Dobu Island, D'Entrecasteaux Arch.

Dogwa, Oriomo River, Western Division of Papua

St. Cameron, Owen Stanley Range

Chads Bay, Rawlston Bay, west of East Cape
Charles Louis Mts., western part of Nassau Range
Chogori, 18,000 ft. inland of Port Moresby, at the
headwaters of Milne Bay River.

Chogori District - Sogeri District.

Clonky Bay, Eastern Division of Papua

Collingwood Bay, South-east New Guinea

Conflict Group, Bougainville Archipelago

Constance Island - Constance Island, west of Clonky Bay

Cylich Mountains, northern Dutch New Guinea

Dallmannshafen - Newer, Milne Bay District

Dampier Island - Karkar

Daru Island, Western Division of Papua

Dawong, Harzog Mts.

Deboyne Is., Bougainville Arch.

Deliverance Island, Torres Straits

Dr. Berimaps, Weyland Mountains

Digul River, south New Guinea

Dobo, New Islands

Doom Island, D'Entrecasteaux Arch.

Dugwa, Oromia River, Western Division of Papua

Doini Island near Samarai, Eastern Div. of Papua

Doormanpaad Bivak Mts. south of the Idenburg River.

Dorey Harbour = Manokwari.

Dourga River = Princess Marianne Straits, south
New Guinea

Duchateau Island south of Misima, Lonisiade Arch.

Dugumenu Island, Woodlark group

Eafa District

East Cape

Eilanden River, south New Guinea

D'Entrecasteaux Archipelago

Mt. Epa Hall Sound, Central Div. of Papua

Erima, Astrolabe Bay

Etappenberg Sepik Mts.

Ethel River, Hall Sound

Etna Bay, South-west New Guinea

Fak-Fak, South-west New Guinea

Fergusson Island

Finisterre Mts., Huon Peninsula

Finsch coast, Aitape district

Point Island near Samarai, Eastern Div. of Papua

Portmanning River Mts. south of the Idenburg River.

Porty Harbour - Manokwari.

Porty River - Princess Margaret Straits, south
New Guinea

Puchanan Island south of Milne Bay, Louisiade Arch.

Pugmunt Island, Woodlark group

Rafa District

East Cape

Rindang River, south New Guinea

St. Michael's Archipelago

Mt. Rapa Hail Island, Central Div. of Papua

Sirima, Astrolabe Bay

Soppongeri River Mts.

Sobel River H. I. Island

Sonne Bay, South-west New Guinea

Sok-Tek, South-west New Guinea

Sorgensen Island

St. Michael's Mts. Hoon Peninsula

Tinian coast, Alaska District

Finschhafen, Huon Gulf

Fly River

Friedrich Wilhelms Hafen = Madang Astrolabe Bay

Gagi, Western Papuan Islands

Galley Reach, Redscar Bay, Central Div. of Papua

Mt. Gayata, Richardson Range

Gawa Island, Woodlark group

Gebe Island, Western Papuan Island

Gebroeders Mts., Weyland Mts.

Geelvink Bay

Gemien Is., Western Papuan Is.

Gerekanumu, Astrolabe Mts.

Gogol River, = upper Ramu River

Goldie River, South-east branch of the Laloki River

Mt. Goliath, Oranje Range

Goodenough Island

Grat Iager, Hunsteinspitze, Sepik Mts.

Hall Sound, Central division of Papua

Haidana, Collingwood Bay

Hastings Island Bonvouloir group, Louisiade Arch.

Pinaschman River Gulf

Riy River

Friedrich Wilhelm-Hafen = Madang, New Hebrides Bay

Gagi, Western Papuan Islands

Gallie Beach, Redwood Bay, Central Div. of Papua

Mt. Galyote, Richardson Range

Gawa Island, Woodlark Group

Gede Island, Western Papuan Islands

Gedroder's Mts., Weyland Mts.

Geevink Bay

Gemien Is., Western Papuan Is.

Gerenkum, New Hebrides Mts.

Gogol River, = Upper Ramu River

Goldie River, South-east branch of the Laloki River

Mt. Gollath, Orange Range

Goodenough Island

Grat Lager, Hunsdorp, Sepik Mts.

Hall Sound, Central Division of Papua

Halbana, Collingwood Bay

Hastin a Island, Bonvillier Group, New Hebrides Arch.

Hatam, Arfak Mountains

Heath Island = ^{Rogea,} China Straits near Samarai
^

Heldsbach coast, Huon Gulf near Finschhafen

Hellwig Mountains, Oranje Range upper Lorentz River

Herzog Mts. between Bulolo River and Huon Gulf

Hollandia, near Humboldt Bay

Holnicote Bay, northern Division of Papua

Hompua, Saruwaged Mts.

Hufeisengebirge, back of Astrolabe Mts.

Humboldt Bay

Humsteinspitze, Sepik Mts.

Huon Gulf

Hydrographers Mts., North-eastern division of Papua

Iagei River = upper Ramu River

Iamna Island = Yamna

Iapen Island, Geelvink Bay

Iaur, south-west coast of Geelvink Bay

Idenburg River, eastern branch of the Mamberant River

Ifaar - Ifar

Ifar, Sentani Lake

Hakka, Arak Mountains

Hakka, Arak Mountains
Hakka, Arak Mountains

Hakka, Arak Mountains

Hakka, Arak Mountains

Hakka, Arak Mountains

Hakka, Arak Mountains

Hakka, Arak Mountains

Hakka, Arak Mountains

Hakka, Arak Mountains

Hakka, Arak Mountains

Hakka, Arak Mountains

Hakka, Arak Mountains

Hakka, Arak Mountains

Hakka, Arak Mountains

Hakka, Arak Mountains

Hakka, Arak Mountains

Hakka, Arak Mountains

Hakka, Arak Mountains

Hakka, Arak Mountains

Hakka, Arak Mountains

Ioannet Is., Calvados chain, west of Tagnla
Lonisiade Arch.

Iobi Island = Japan Geelvink Bay

St. Josephs River = Angabunga River

Iunzaing, Saruwaged Mts. Huon Peninsula

Iwaka River, branch of the Kamura River, foot of
Nassau Range

or Kafou
Kafu, north New Guinea east of Aitape, opposite
Tarawa Is.

Kailena Island, Trobriand Island

Kapa Kapa near Rigo, Central Div. of Papua

Kapare River west of the Mimika River, foot of
Nayan Range

Kapaur Onin Peninsula, South-west New Guinea

Karan, between Aitape and the Sepik River

Karkar Is. off northern New Guinea

Karons, northern Vogelkop

or Kataru
Katau River a few miles west of the Oniomo River,
Western Div. of Papua

Kavijaaw = Kofiau

Kemp Welch River, Central Div. of Papua

Killerton Island, Milne Bay

Kiriwina Is., Trobriand Is.

Joanne Is., Galapagos chain, west of Tanager
Lonsdale Arch.

Joel Island = Japan Sea/Ink Bay

St. Joseph River = Angkor River

Innesing, Garwayed N.W. from Peninsular

Iwaki River, branch of the Kama River, foot of
Nassau Range

Katu, north New Guinea east of Kulu, opposite
Tawa Is.

Kathman Island, Teopirand Island

Kapa Kapa, near Rigo, Central Div. of Papua

Kapre River west of the Mimika River, foot of
Nayan Range

Kaput Gini Peninsula, South-west New Guinea

Karan, between Kulu and the Sepik River

Karkat Is. off northern New Guinea

Karong northern Vogelkop

Katou River a few miles west of the Onimo River,
eastern Div. of Papua

Kavijaw = Korian

Kemp Welch River, Central Div. of Papua

Kilberton Island, Milne Bay

Kirwina Is., Teopirand Is.

Kitava Is., Trobriand Is.

Mt. Knutsford, Whart on Range

Kobroor Island, Aru Islands

Koffiao = Kofian Western Papuan Island

Kofo, Anggi gidji, Arfak Mts.

Konstantinhafen, head of Astrolabe Bay

Korido, Biak Is., Geelvink Bay

Koruba Region MacClay Coast, Huon Peninsula

Kotoi District, Owen Stanley Range

Kraetke Mts., east of the headwaters of the Ramu River

Kulungtufu, Saruwaged Mts., Huon Peninsuler

Kumamba Islands north New Guinea, east of the mouth
of the Mamberano River

Kumusi River, Northern District of Papua

Mt. Kunupi, Weyland Mts.

Kuper Rge. south-west of Salamama, Huon Gulf

Kurudu Island east of Japan, Geelvink Bay

Laloki River near Port Moresby

Mt. Lehuma, Arfak Mountains

Lobo Bay = Triton Bay, South-west New Guinea

Lolebu, Huon Gulf near Finschhafen

Kilave Is., Trobriand Is.

Mr. Knudsen, Wharf on Range

Kobor Island, Am Islands

Koffia = Kofia Western Papuan Island

Koko, West side, Arak Mts.

Koharungten, Head of Astrolabe Bay

Korido, Is. Is., Geelvink Bay

Koruba Region, Middle Coast, Hon Peninsula

Kosoi District, Owen Stanley Range

Kwaka Mts., east of the headwaters of the Bamu River

Kulungten, Barunged Mts., Hon Peninsula

Kwamba Islands north New Guinea, east of the mouth
of the Mamberano River

Kumasi River, Northern District of Papua

Mr. Knudsen, Weiland Mts.

Kupar Bay, south-west of Salamaua, Hon Gulf

Kurda Island east of Japan, Geelvink Bay

Lakoni River near Port Moresby

Mr. Lohm, Arak Mountains

Lobo Bay = Triton Bay, south-west New Guinea

Loloh, Hon Gulf near Timor

Lordberg, Sepik Mts.

Lorentz River, South-west New Guinea

Louisiade Archipelago

Lutor, Aru Is.

Macclay Coast, north-coast of the Huon Peninsula

Madang, Astrolabe Bay

Maeanderberg, Sepik Mts.

Mafoor Island

Mafulu, Central Division of Papuan

Mallalo, near Salaniana, Huon Gulf

Mailu, 25 miles west of Orangerie Bay

Malu, lower Sepik River

Mambare River, Northern Division of Papua

Mamberano River

Manam, island off N. New Guinea

Mandum, Bian River, Merauke district, south New Guinea

Mt. Manaeao, inland of Collingwood Bay

Manokwari

Mapia Island, north of the Vogelkop

Marienberg, lower Sepik River

Lorimer, Sepik Mts.

Lorentz River, South-west New Guinea

Louisiana, Koniopelago

Lugar, Mtn. Is.

Luzon Coast, north-east of the Hoon Peninsula

Madang, Koniopelago Bay

Meanderberg, Sepik Mts.

Melchior Island

Melina, Central Division of Papua

Melina, near Salamaua, Hoon Is.

Melina, 25 miles west of Orangeville Bay

Melina, lower Sepik River

Melina River, Northern Division of Papua

Melina River

Melina, island off N. New Guinea

Melina, Biau River, Melina district, south New Guinea

Melina, island of Collingwood Bay

Melina

Melina Island, north of the Vogelkop

Melina, lower Sepik River

Markham River

Matsika, Central Division of Papua

Mekeo, Owen Stanley Range

Menoo River, head of Geelvink Bay

Merauke, south New Guinea

Meos Korwar = Meos Pondi west of Biak Is. Geelvink Bay

Meos Num = Mios nom Geelvink Bay

Milne Bay

Mimika River, foot of Nassau Range

Miosnom Island, Geelvink Bay

Misima - St. Aignan Louisiade Archipelago

Misol, western Papuan Islands

Misori = Biak Island, Geelvink Bay

Mt. Moari, Arfak Mts.

Momi, west-coast of Geelvink Bay at the foot of Arfak
Mts., near Wariap

Mopa, south New Guinea, opposite Frederik Hendrik Is.

Mongi-Busu, Saruwaged Mt.

Mt. Morait, Vogelkop last of Sorong

Port Moresby, Central Division of Papua

Marathon River

Mataika, Central Division of Papua

Makes, Owen Stanley Range

Makoo River, head of Geelvink Bay

Makurda, south New Guinea

Mako Koroa - Mako Pond west of Atak Is., Geelvink Bay

Mako Nun - Mako Nun Geelvink Bay

Makua Bay

Makua River, foot of Makua Range

Makua Island, Geelvink Bay

Makua - St. Ignace Island, Archipelago

Makua, western Papua New Guinea

Makua - Atak Island, Geelvink Bay

Mr. Makua, Atak Mts.

Makua, west-coast of Geelvink Bay at the foot of Atak Mts., near Makua

Makua, south New Guinea, opposite Freycinet Harbour Is.

Makua-Buan, Barrowed Mt.

Mr. Makua, Vogelkop Is. of Sorong

Port Makua, Central Division of Papua

Morobe District west of Huon Gulf

Moroka near headwaters of Laloki River, Central Div.
of Papua

Murray Pass, Wharton Range

Musgrave Range, Owen Stanley Range

Mysore Island = Biak Island Geelvink Bay

Naiabui, Hall Sound

Nassau Range, western part of Snow Mts.

Neneba, north Slope of Mt. Scratchley, at the head-
waters of the Mambare River

Nicura, Hall Sound

Noisaroe, probably near the head of Geelvink Bay

Noord River = Lorentz River south New Guinea

Normanby Island D'Entrecasteaux Arch.

Numfor Island (=Mafor) Geelvink Bay

Ogeramnang, Saruwaged Mts.

Onin Peninsula, south-west New Guinea

Oranje Range, eastern part of Snow Mts.

Orangerie Bay, eastern Division of Papua

Owen Stanley

Owgarra, Angabunga River, Central Div. of Papua

Worode District west of Hnon Gail

Woroka near headwaters of Lalaki River, Central Div. of Papua

Woroka Pass, Western Range

Woroka Range, Owen Stanley Range

Woroka Island - Misk Island Geelvink Bay

Woroka, Hill Sound

Woroka Range, western part of Snow Mts.

Woroka, north slope of Mt. Scorpion, at the headwaters of the Hambara River

Woroka, Hill Sound

Woroka, probably near the head of Geelvink Bay

Woroka River - Torontia River south New Guinea

Woroka Island D'Entrecasteaux Arch.

Woroka Island (=Misk) Geelvink Bay

Woroka, Snow Mts.

Woroka, south-west New Guinea

Woroka Range, eastern part of Snow Mts.

Woroka Bay, eastern Division of Papua

Owen Stanley

Owara, Torontia River, Central Div. of Papua

71 Pauwi, lower Mamberano River

Passim, south-west coast of Geelvink Bay

Peripatusberg upper Sepik River

Potsdamhafen N.N.G. northern New Guinea east of the
mouth of the Ramn River opposite
Manain Island

Prauwenbivak, Mamberano River

Princess Marianne Straits, south New Guinea

Profi, Arfak Mts.

Pulu Babi, Aru Is.

Purari River, Gulf of Papua

Putat, Arfak Mts.

Ramu River, north New Guinea

Rawlinson Mts. part of the Saruwaged Range, Huon
Peninsula

van Rees Gebergte north New Guinea at the lower
Mamberano River

Renard Island near Sudest Island, Lonisiade Arch.

Richardson Range, Owen Stanley Range

Rigo District, Central Division of Papua

Rogeia, island in China Straits

71 Rona, Central Division of Papua

71 Ron Island, Wandammen district Geelvink Bay

Penai, lower Mamberamo River

Pessim, south-west coast of Geelvink Bay

Perrigastang, upper Sepik River

Potomaham, N.W.G., northern New Guinea east of the
mouth of the Ramu River opposite
Manat Island

Prauwendivak, Mamberamo River

Prinses Marianne Straits, south New Guinea

Probi, Arak Mts.

Pula Bodi, Aru Is.

Purari River, Gulf of Papua

Purari, Arak Mts.

Ramu River, north New Guinea

Ramintson Mts., part of the Snowy Range, New
Guinea

Van Ness Gebirge north New Guinea at the lower
Mamberamo River

Rend Island near Sudest Island, Louisiade Arch.

Richardson Range, Owen Stanley Range

Rigo District, Central Division of Papua

Rogai, island in Cairns Straits

Rona, Central Division of Papua

Ron Island, Sandakan District, Geelvink Bay

Rossel Island, Louisiade Archipelago

Round Island near Tagula, Louisiade Archipelago

Rubi, head of Geelvink Bay

Salamoa = Salamaua, west-coast of Huon Gulf

Salawati, western Papuan Islands

Sanuibu, Arfak Mts.

Saruwaged Mts., Huon Peninsula

Sattelberg, Huon Peninsula

Schraderberg, Sepik Mts. (south of Marienberg)

Mt. Scratchley, Wharton Range

Seerosensee, Sepik River

Seleh, west-coast of Vogelkop

Sekru, Onin Peninsula

Lake Sentani near Humboldt Bay, northern New Guinea

Sepik River

Setakwa River, foot of Nassau Range

Sevia Saruwaged Mts., Huon Peninsula

Simbang, near Finschhafen, Huon Gulf

Siriwo River, head of Geelvink Bay

Siwi, Arfak Mts.

Ross Island, Lonsdale Archipelago

Round Island near Tagula, Lonsdale Archipelago

Basin, head of Geelvink Bay

Salmon - Salween, west-coast of Huon Gulf

Salween, western Lonsdale Archipelago

Sandwich, Arak Mts.

Sandwich Mts., Huon Peninsula

Sandwich, Huon Peninsula

Schneiderberg, Sepik Mts. (south of Marlenberg)

Mt. Schreiner, Wharton Range

Schreiner, Sepik River

Schreiner, west-coast of Vogelkop

Schreiner, Huon Peninsula

Lake Schreiner near Huon Gulf, northern New Guinea

Sepik River

Sepik River, foot of Massam Range

Sepik, Huon Peninsula

Sepik, near Finischna, Huon Gulf

Sepik River, head of Geelvink Bay

Sepik, Arak Mts.

Snake River, tributary of the Bulolo River, Herzog Mts.

Snow Mountains (Nassau and Oranje Ranges)

Soek Island = Biak Island, Geelvink Bay

Sogere District = Sogeri upper Laloki River

Sorong small island near west-coast of Vogelkop

Stephansort, Astrolabe Bay

Suau Island, opposite East Cape

Mt. Suckling, between Cloudy Bay and Collingwood Bay

Sudest Island = Tagula, Louisiade Archipelago

Suku, upper Vanapa Valley

Mt. Sumuri, Weyland Mts.

Taburi District, Central Division of Papua

Mt. Tafa, near Wharton Range *between St Joseph & Vanapa Rivers*

Tagula, Louisiade Arch.

Takar, coast of north New Guinea opposite Yamna Is.

Tami River, east of Humboldt Bay, north New Guinea

Taua, mouth of the Mamberano River

Tanah Merah Bay north New Guinea, west of the
Cyclop Mts.

Tarawai Is. small islands off the coast of north New
Guinea between Aitape and the mouth of the
Sepik River

14/17

(cont'd.)

Snake River, tributary of the Salado River, Harney Mts.

Snow Mountains (Wasatch and Grand Canyons)

Sook Island = Sook Island, Oosivik Bay

Sogere District = Sogeri Upper Laiski River

Sorong small island near west-coast of Vogelkop

Steghman, Astoria Bay

Stam Island, opposite East Cape

Mt. Stirling, between Clondy Bay and Collingwood Bay

Subst Island = Tagula, Louisiade Archipelago

Suk, or Vanapa, Sulu

Mt. Sumari, Sulu Mts.

Tabari District, Central Division of Papua

Mt. Tala, near Wharfed Range

Tagula, Louisiade Arch.

Takar, coast of north New Guinea opposite Tanna Is.

Tami River, east of Humboldt Bay, north New Guinea

Tam, mouth of the Mamberamo River

Tanah Merah Bay north New Guinea, west of the
Sulawesi Mts.

Tarawa Is. small islands off the coast of north New
Guinea between Milne Bay and the mouth of the
Sepik River

Teste Island, south-east of Samarai

Tjobonda, Arfak Mts.

Tor River, north coast of Dutch New Guinea

Torres Straits

Trangan Island, Aru Islands

Treub Mountains, Oranje Range

Triton Bay

Trobriand Islands

Uria River, tributary of upper Ramu River

D'Urville Island = Tarawai

Utakwa River, foot of Nassau Range

Utanata River 30 miles west of the Mimika River
south-west New Guinea

Vanapa River, west of Port Moresby Central Div.
of Papua

Vanimai, Central Division of Papua

Mt. Victoria Owen Stanley Range

Vikaiku, Angabunga River Central Div. of Papua

Vogelkop (= Berau Peninsula) north-west New Guinea

Vulcan Island = Manam

Teate Island, south-east of Samarai

Tjibonda, Arak Mts.

Tor River, north coast of Dutch New Guinea

Torres Straits

Trangan Island, Arn Islands

Trend Mountains, Orange Range

Trivon Bay

Tropican Islands

Uria River, tributary of upper Ramu River

Uruville Island = Tarawa

Utakwa River, foot of Nassau Range

Utakwa River 30 miles west of the Mimika River
south-west New Guinea

Venapa River, west of Port Moresby Central Div.
of Papua

Vennia, Central Division of Papua

Mt. Victoria Owen Stanley Range

Vikaku, Angabunga River Central Div. of Papua

Vogelkop (= Beram Peninsula) north-west New Guinea

Vulcan Island = Manam

Waigen western Papuan Islands

Wamma Is., Aru Islands

Wanambai, Kobroor Island, Aru Islands

Wandammen Mts., west coast of Geelvink Bay

Wanggar District, head of Geelvink Bay

Warbusi, west coast of Geelvink Bay near Wariap

Waria River, Morobe district, south coast of Huon Gulf

Warrior Island, Torres Straits

Warmendi, Arfak Mts.

Waropen, south-east coast of Geelvink Bay

Warsembo, west coast of Geelvink Bay, south of
Rumberpon Island

Wa Samson River, Vogelkop east of Sorong

Watut River, southern tributary of Markham River,
Morobe district of the Mandated
territory.

Wau, Bulolo River

Wendoe Mer River, Merauke district, south New Guinea

Weyland Mountains

Wharton Range, south-east New Guinea

Windesi, west coast of Geelvink Bay

16/17

(cont'd.)

Wigen western Papua Islands

Wanna Is., New Islands

Wanambai, Korocho Island, New Islands

Wandamen Mts., west coast of Geelvink Bay

Wandiger District, east of Geelvink Bay

Wandui, west coast of Geelvink Bay near Hattop

Wania River, Morobe District, south coast of Huon Gulf

Warfor Island, Torres Straits

Warrendi, Arak Mts.

Waropen, south-east coast of Geelvink Bay

Warondo, west coast of Geelvink Bay, south of
Hamberston Island

Wasson River, Vogelkop east of Sorong

Wast River, southern tributary of Markham River,
Morobe District of the Mandated
Territory.

Wau, Bulolo River

Wenooe Wer River, New Guinea District, south New Guinea

Weyland Mountains

Wharton Range, south-east New Guinea

Windesi, west coast of Geelvink Bay

Mt. Winterheight, south-east New Guinea

Wokan, Aru Islands

Wonapi, Japen Is. Geelvink Bay

Mt. Wondiwoi, Wandammen Peninsula, west coast of
Geelvink Bay

Woodlark Island

Wuroi, Oriomo River Western Division of Papua

Yamna Is., Off the north coast of New Guinea, east
of the mouth of the Mamberano River.

Yarru Island = Daru Island

Yule Island, in Hall Sound Central Division of Papua

Zakaheme, Saruwaged Mountains, Huon Peninsula

326 Localities

St. Wintehelg, South-east New Guinea

Nokan, the Islands

Konaki, Japan Is. Geelvinck Bay

St. Wintehelg, South-east New Guinea, west coast of
Geelvinck Bay

Woodlark Island

Waroi, Orfomo River Western Division of Papua

Yama Is., Off the north coast of New Guinea, east
of the mouth of the Mamberamo River.

Yarra Island = Dora Island

Yule Island, in Helli Sound Central Division of Papua

Zakheh, Carnewag Mountains, Hoon Peninsula

Localities of the 1936 Exp.

Mt Mahony

Camp 2 miles below junction Black & Palmer Rivers
Upper Fly River

Camp 5 miles below Palmer junction, Upper
Fly River

Camp 20 Miles above D'Alberty junction
Fly River

Lake Derrimber, Fly River

Fly River, east bank opposite Stuart St.

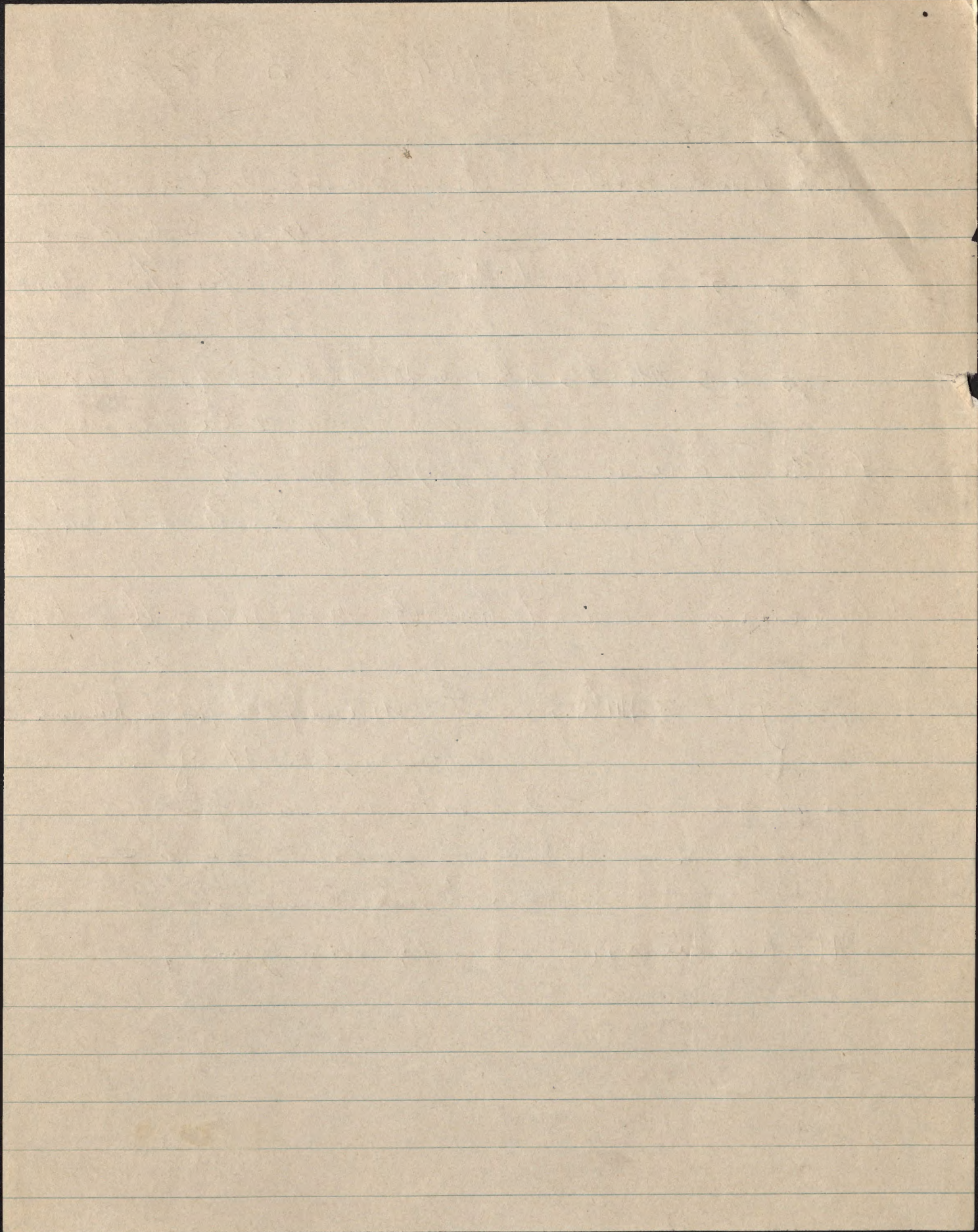
Gaima, east bank near mouth Fly
River

Buji 3 miles east mouth of Mai Kussa
River, S. N. G.

Tarora, Wassikussa River

Penza, between Wassi Kussa &
Moched Rivers

Mabanduan - south near Junig



Locality Names.

From Mt. A. E. to Mt. Victoria
- Wharton Range.

① Aikora

② Akuluma River or jakaruma

Annie inlet

③ Aropokina

Aroa River

④ Astrolabe Range

⑤ Auga River

⑥ Baroka :- 12 miles to Yule Isle.

⑦ Bamu

⑧ Bella Vista 1450

Baniara 3

⑨ Bramble Cay

⑩ Brode

⑪ Bioto

⑫ Bioto Creek

⑬ Buna

⑭ Binaturi

⑮ Dape Possession

Cape Cupola

⑯ Chirima Valley

⑰ Darnby Island

⑱ Daru

⑲ Diene

⑳ Delena Point

㉑ Deva Deva

㉒ Delta Saw Mills

㉓ Dilava

㉔ Dilava Mission

㉕ Dilafa River

㉖ Dogwa

spelled Dogwa on bird labels.

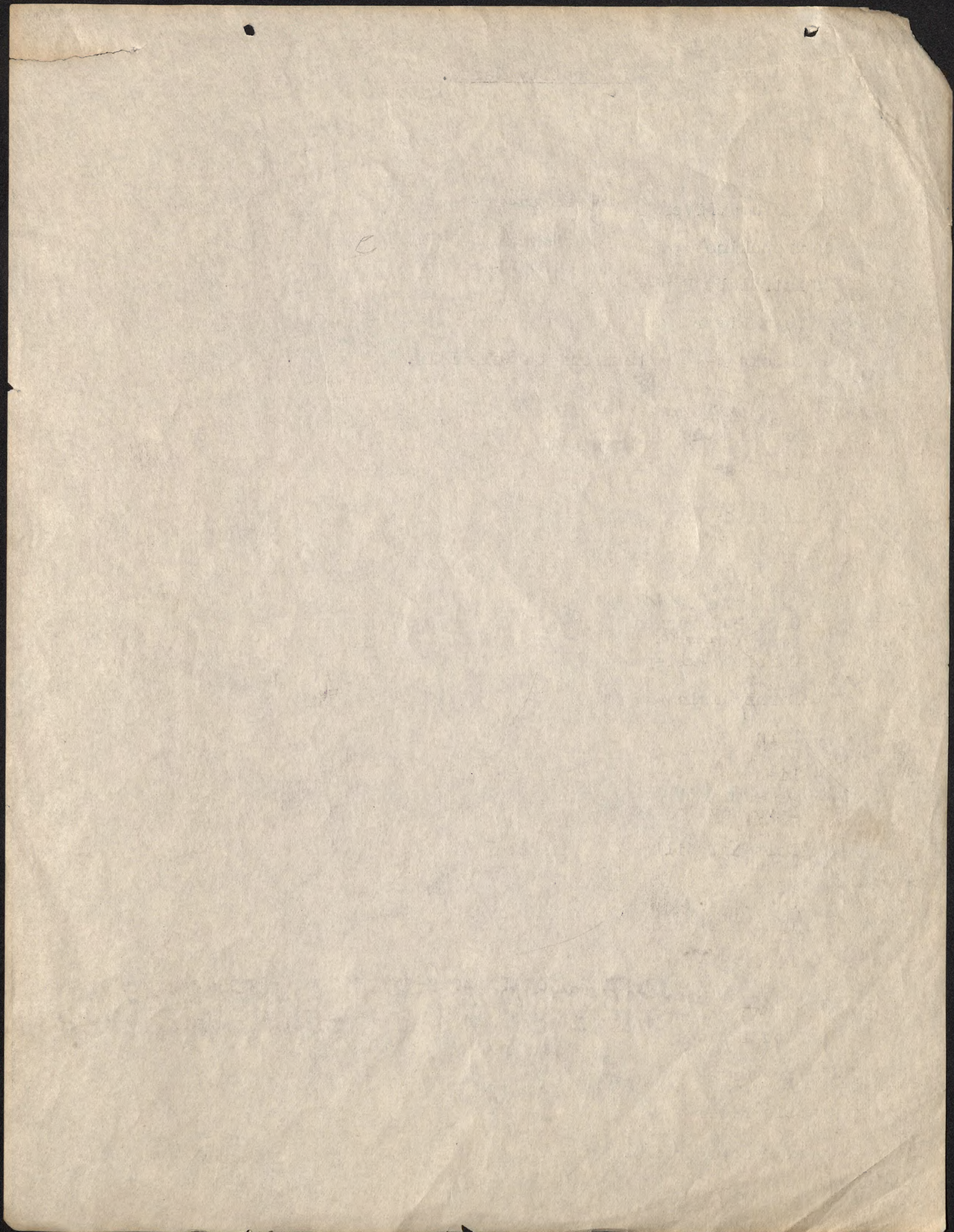
㉗ Ethel River

㉘ Ero Creek

㉙ Ela River

㉚ Evilemi tal.

Duro, St. Angabunga River



20 Fane 1900 m

21 Fofofoto

Fuyugi People

e. Garamu

21A # Gerinda

Giumu

* Gailala People

21B Galley Reach

Gossiago "

22 Hall Sound :-

3 miles wide

Hanuabada

Hisu

Hydrographers Range

Ikeke (Ika-ika)

22A # Ivulu

Kailape (Tuomo)

Kambisi

23 Kairuku

Kea River

Kikori

Rivras Kiwai

Kokoda also Loma

Koiare

Kubuna

Kuama

Kuni People

Lacy

Lake Enguba

27 Laloki River

Loloipa

26 Madiu

Maban

Madang

29 Mafulu

mamore creek

Mandada

marudodua

30 # Matsika 880

Meekio Plain Mekeo

Meekio People

31 Milne Bay

Mondo 1480 m

32 Mount Albert Edward

33 * " Davidson

34 " Clarence

16 Finschhafen

17 Grange Island

20 Hompua

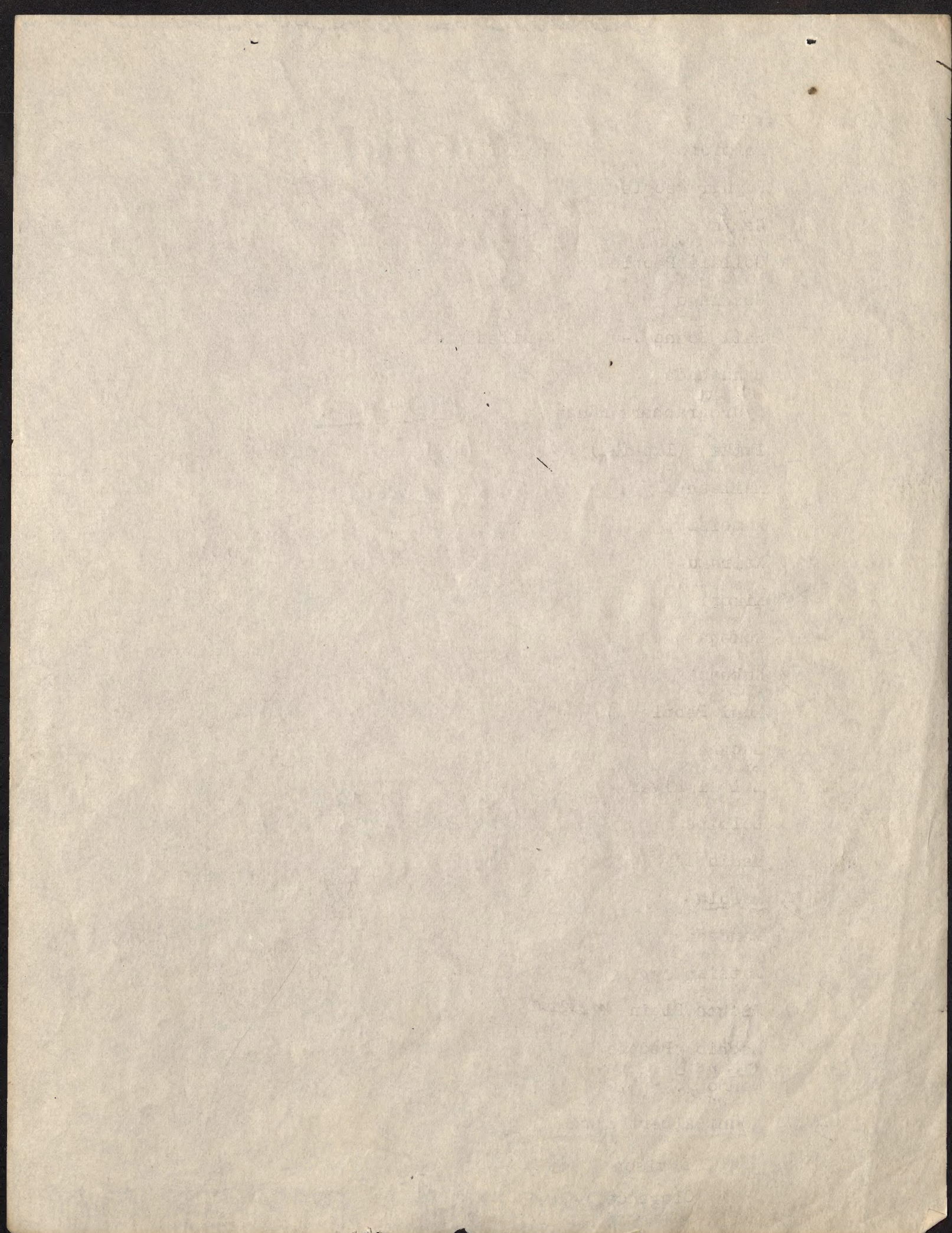
21 Iola

13 Kapa-kapa

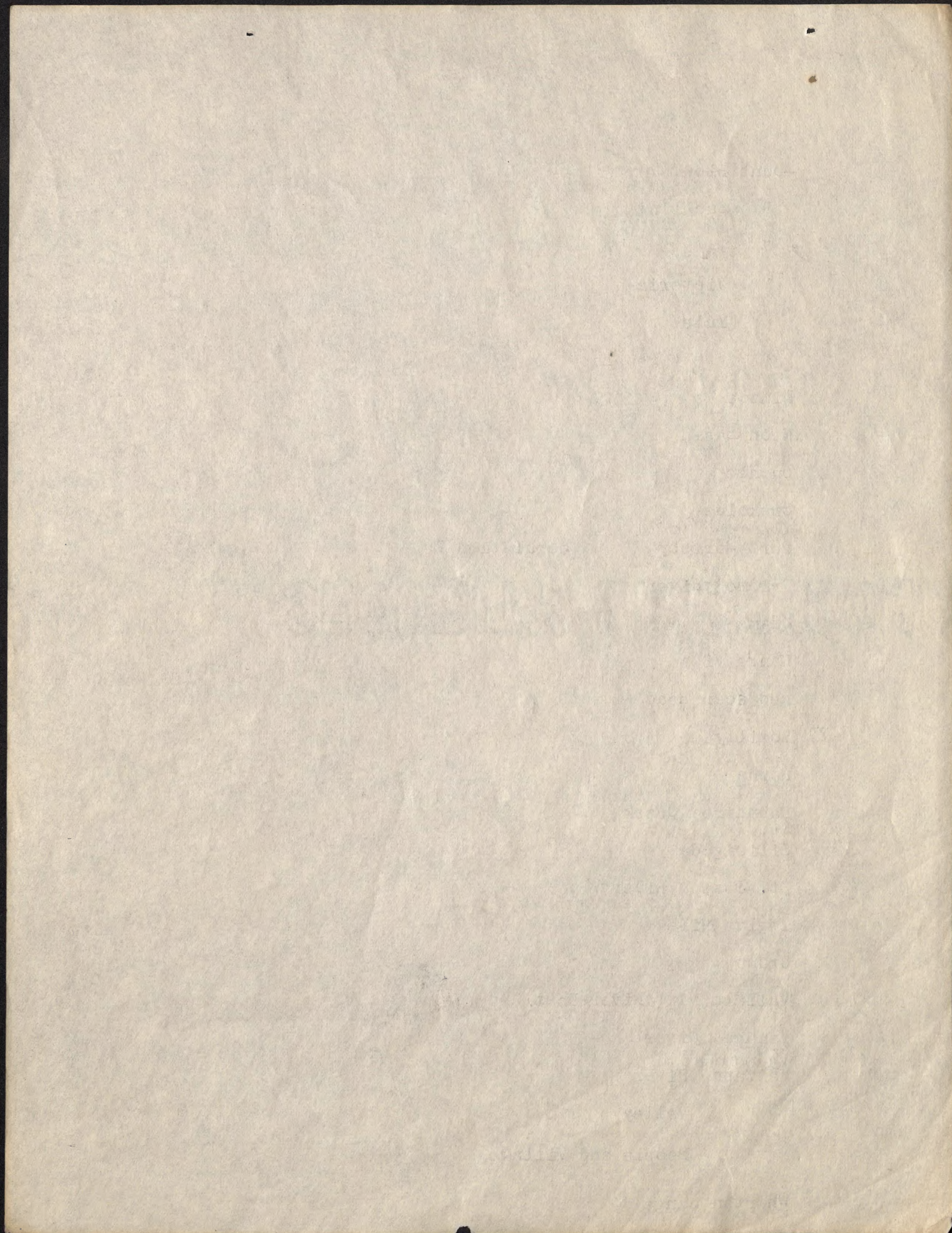
12 Kanosia, Galley Reach

14 Keku

11 Loloma, Galley Reach



- 35- Mount Riew Brown 37. Mount Lamington
- " Owen Stanley
- " Suckling
- 4 Scratchley
- " Tafa
- " Victoria
- " Yule
- " " People
- 40 36. Murray Pass
- # Nimode
- 404 # Neon Basin
- 41 38# Owen Stanley Range
- Ononge alt 1800 m.
- Orokolo
- 40. Oriomo River
- 41 Port Moresby Population ?
- Priomo River
- 42 Kuama
- Range View
- 43 42 Red Scar Head 43. Rigo
- Port Romilly
- 44. Rona
- 45. Sawis Creek
- 46. Rorona, Galley Reach
- 46. Samarai
- Sapphire Creek
- 44. Scratchley Mt
- 47. Sevia
- 45 Silisigoda
- 48. Tu fi
- 46. Seregina
- St. Joseph River
- 48. Tonombotoga Lake
- Twelve Mile
- 47. Urunu alt 1900 m.
- Vailala (River Boat) 51. Veimauri, Galley Reach
- 48. Vanapa River
- 49. Vanumai
- Waitapu River
- " Valley
- " People and Village
- 50. Wharton Range
- 51. Warco



51

Waria River

53

Wuroi

Yakaruma River

Yodda River

52

54

Yule Island (5x2-- 3 miles off shore)

Zakatheme

55

Iota

56 Mambare River

add

Ko Roden.

Pouma

