

SUPPLEMENTARY INFORMATION FOR VOSS & GIARLA (2020)

“A Revision of *Philander* (Marsupialia: Didelphidae), Part 2:  
Phylogenetic Relationships and Morphological  
Diagnosis of *P. nigratus* Thomas, 1923”  
(American Museum Novitates **????**)

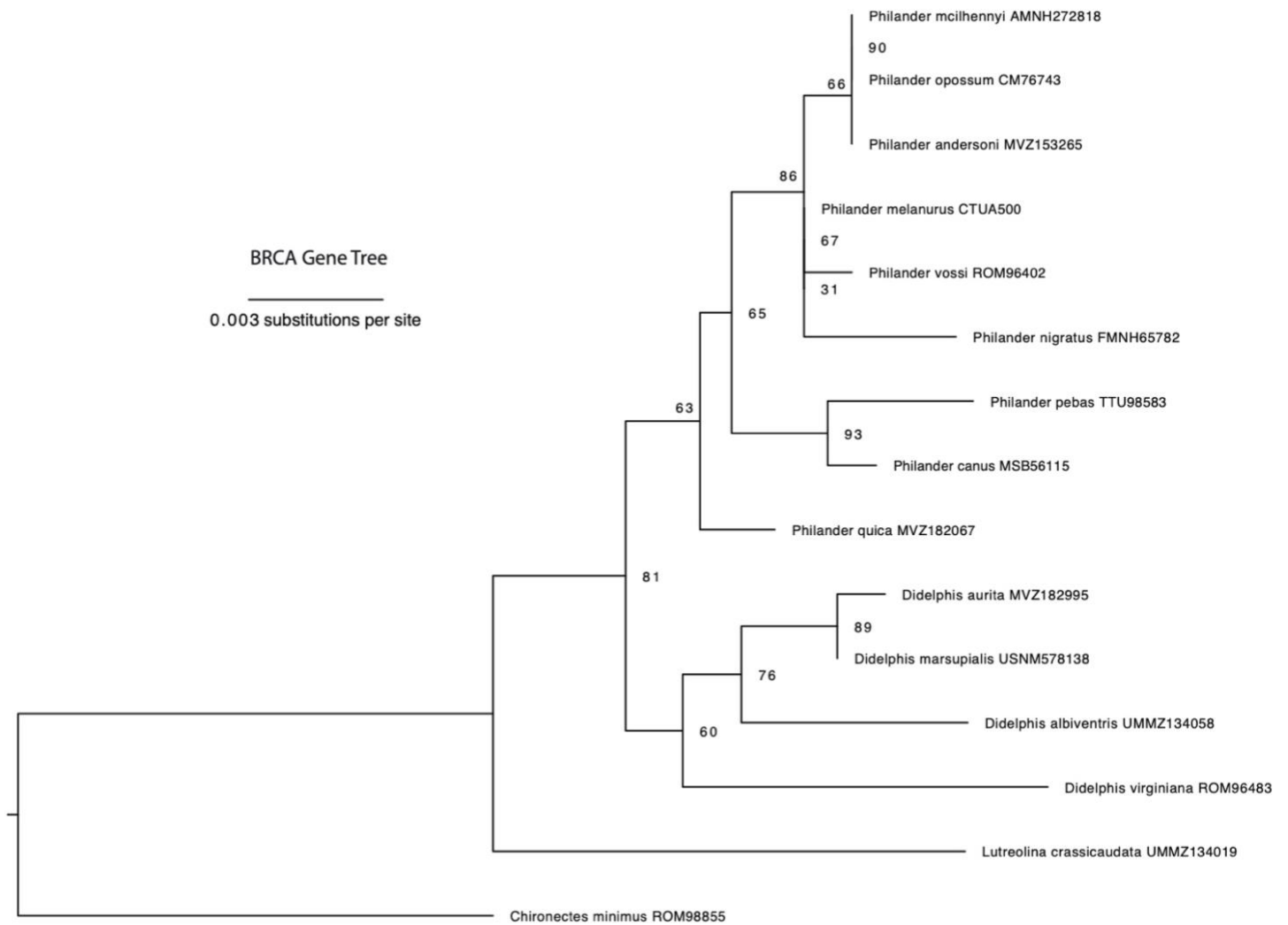


Figure S1. Maximum-likelihood gene tree for *Philander* spp. and outgroup taxa based on IQ-TREE analysis of breast cancer susceptibility protein (BRCA1) DNA sequences. Numbers at nodes denote ultrafast bootstrap support.

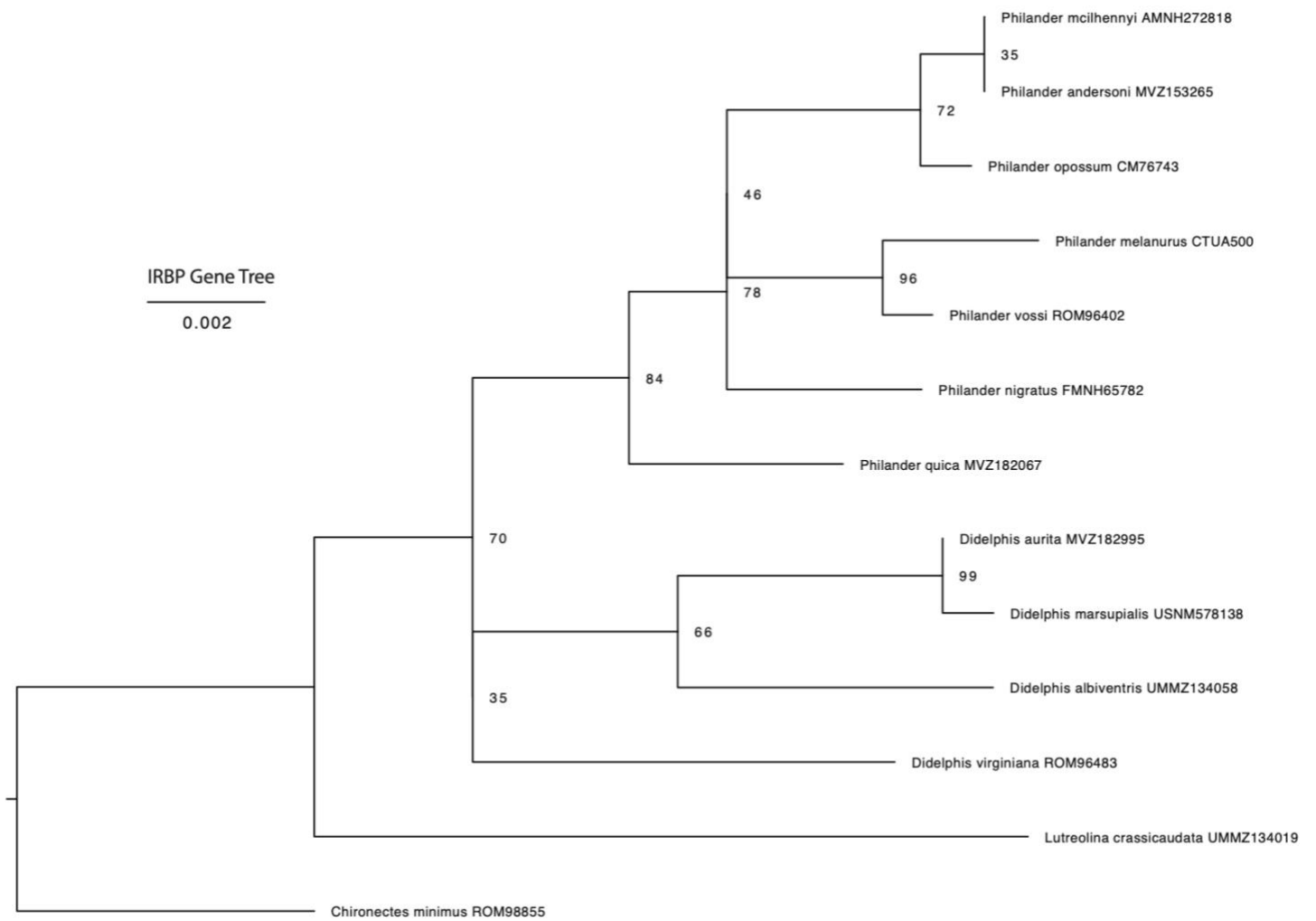


Figure S2. Maximum-likelihood gene tree for *Philander* spp. and outgroup taxa based on IQ-TREE analysis of interphotoreceptor retinoid binding protein (IRBP) DNA sequences. Numbers at nodes denote ultrafast bootstrap support.