



Reptiles & Batrachians.

Put ~~em~~ in the
tray - Tobacco
in Cat.

Typhlops

2279

Canada's March 19/19

no. 1233. large male

Head above dull greenish, sides pale buff mandible & throat glossy pale yellowish. Iris dark grayish bronze with fine yellowish ring about the round pupil. Above grayish green with a fringe of brownish especially on the neck. Ventral surface greenish gray. The greenish is more prevalent in the anterior half.

Had swallowed a large *Chamaeleon*, the first of two species observed here.

Camped in a tree.

no. 1234 ✓ Large *Chamaeleon* had been destroyed by the snake no. 1233.

no. 1235 ✓ Liger, the largest of its kind, also entirely the pretty colors as its general color is dull grayish brown.

March 12

no. 1236

1237 - 1238 - 1239 - 1240 - 1241 - 1242

Seven pondfrogs common in the many swamps also in brooks and near the shores of rivers.

Paradise March 23 / 1911

No. 1243. small viper like No. 1232

^{R 12302}
No. 1244 to 1251. eight lizards, from 1244 to 1250 incl. the blue on the tail is in all specimens equally strong, in 1251 there is only a blue tinge. In older specimens this col. is entirely replaced by brownish gray. Common especially near the retive village where they can be seen basking everywhere. They also run along the walls of the huts and go in to the thatching often seen near bridges, logs and in plantations.

March 25. Python T.H. L. 254 cm. length
No. 1252 of tail from anus 28 cm.
skull only

March 27, cobra - a large male, fairly
No. 1253. common in these regions.
can raise the anterior third
of his body from the ground.

^{R 12327}
⁽⁰⁷⁻²³²⁾
March 20 a green tree snake

No. 1254. X Taken in a papaw tree.
R 12084

Loradji March 30/1911

No. 1255. Python. Tot. Length 366 cm. Length
of Tail from anus 37 cm.

Skin in formalin skull dried.

No. 1256. Monitor

Tl. 143 cm. Length of tail from
anus 87 cm.

April 2

No. 1257

Python Tot. Length 488 cm

Length of tail from anus 42 cm.

The tail is usually about one
fifth of the total length.

When skinned it measured 620 cm
in length, 55 cm in width.

skull only - no skin (eaten
by rats). These Pythons are caught
by the natives by means of a
sliding trap that is set at the exit
of holes. The Pythons have been about
the habit of seeking refuge ^{in ~~the~~ ^{open} large}
(simply to sleep) in the excavations
of former termite hills. At the
present time the rainy season
has started and the natives
simply follow the tracks of

Paradise April 2/1918

No. 1257 The Pythons. If they find they
the retreat of them they at once
set a noose at the hole. The
Pythons are usually caught
right behind the neck. This is
the largest spec. observed.

Several times I have seen natives
spear Pythons the net in the
brush. Twice I have seen
large Pythons speared near
a watercourse. They occur
everywhere, even in open
of fairly dry tracts of land.

No. 1258. viper - small with black
arrowheadlike pattern upon
the head.

April 3
No. 1259 x
R12201
(07-123) tiny snake, evidently a young one.
above a dull (rusty) brown ventral
surface glossy yellowish white, the
mandible whitish, iris gray, pupil
vert. elongate.

Apr. 24
No. 1260. snake, above dark bluish gray
12 nearly black from a distance.

Faradji April 4/1911.

No. 1260. underside a gloomy pale grayish
R 11989 white. Inset brown, pup. vert.
elongate.

No. 1261. large viper - common in the dryer
fields and brush with high
grass.

No. 1262 Snake, the large fangs have
evidently been torn out by the
netwies, this is the largest spec.
collected. Throughout bluish (dark).

¹²⁴⁵³
~~Calamulata~~
No. 1263. Blind snake - large spec. the col.
is a mixture of blackish & pale
gray which is arranged in
parallel running regularly
interrupted lines.

No. 1264. large Chameleon.

No. 1265. to No. 1271. Seven lizards
showing again the gradual
discoloration of the tail. (See No. 1244)
No. 1265 has bright blue tail
whence No. 1271 has only traces
of pale blue in the tip; older
specimens look ~~the~~ entirely

Paradise April 4/1911.

No. 1272 to 1274. Three lizards, only 1272 shows a orange red line along on the ~~sides~~ sides of the ventral surface. No. 1273 has the lateral black line strongly marked which is in 1274 entirely lacking.

April 8
No. 1275. a pond frog.
No. 1276. " " has a light brown median dorsal line.

No. 1277. two small treefrogs. No. 1277 above dark with curious yellowish mouldy looking spots with black centre. Sides, ventral amp. & throat pale yellowish. The under side of limbs, the thigh, the toes & a line in front of throat bright pinkish.

This dark bronzy, pupil long, elong.
No. 1278. above med. gray with a very slight greenish tinge and many minute darkish spots, otherwise the same except the pinkish line in front of throat which is missing.

Paradise April 7/911.

No. 1279. small treefrog, above whitish with
a tinge of yellow & a few small
darkish irregular markings and
two pale green lines running
from the tip of head down to the
sides slightly beyond the middle
of body, ventral side pale pinkish
white tip of toes and underside
of limbs and most of the thigh
pinkish. Iris pale yellowish, pupil
slightly ~~very~~ only along.

No. 1280. small viper, rather large specimen.

No. 1281. Blindworm.

April 9 crocodile - Tot L. 1925 mm.

No. 1282. L. T. from ams 910 mm.

Skull & leg bones only, skull
in skin. Killed in the
jungle. They are relatively
scarce, only single specimens
are observed and always
considered as ^{very} ~~not~~ ^{unusual} ~~at~~ ^{remarkable}.

No. 1283. Crocodile, skull only, from the jungle
R.

Faradje.

No. 1284. Large Water-turtle, preserved in formaline.
(photographed)

No. 1285. Land-turtle, preserved in formaline.

Faradje

Jan. to March. 1912

Nos. 1286. chameleons. *Large.*

No. 1290. chameleons. *Small*
to 1292

No. 1293. Geckos.

No. 1294. Blind-worm.

Nos. 1295. Lizards.
1296.

Abas. July 1911.

No. 1297. Small Python. caught on a rocky hill.

Faradje
No. 1298. Viper.

No. 1299. Watersnake.

Nos. 1300. 1301, 1302, 1303. Snakes.

Nos. 1304, 1305, 1306, 1307. Small tree frogs.

No. 1308. Lizard, with black throat and yellow stripe at side of neck (Watercolor.)

Faradje Sept 7, 1912.

No. 1309. Lizard. Crown dusky brownish, with a central patch of dirty yellowish; sides of head also dusky brown, with a spot of yellowish before and behind eye, and a horizontal streak of same color below eye; nape dirty yellow; upper surfaces of fore and hind limbs, as well as

Paradise
Sept 7. 1912

back and sides of body brownish black, with several small irregular patches of rufous running down each side of the back; upper side of tail dusky-brown; whole ventral surface and under side of limbs dirty yellowish-white with slight metallic lustre. Iris dark gray, with fine glistening specks of yellow.

Sept. 7. 1912

no. 1310

R12261

(07-171)

Snake. General color above brown, with three dull-yellow longitudinal stripes, disappearing anteriorly. Iris dark brown, with a fine greenish ring just around pupil, which is circular. Ventral surface whitish in middle, pale green at sides, and some of the lateral scales edged with black, especially toward the neck. (Photographed)

Sept 7. 1912

no. 1311

Lizard. Crown and back dark olive, with inconspicuous black spots. Iris grayish-buff, black posteriorly. Rim of eyelids yellow, cheeks brownish-black with a few yellowish-white spots, and an irregular creamy line, tinged with red, running from below eye to the ear; just around the ear the tiny scales are orange. Sides of neck and body dark olive above, shading to dirty

Paradise

Sept 1912.

orange-red below, and spotted with yellowish white. Throat and belly orange in middle, shading to orange-red laterally. Fore limbs dark olive above, with a few yellowish white spots, orange-red below; hind limbs olive above, orange below. Tail olive above, with black spots, and a few whitish spots basally, beneath whitish finely speckled with dull red.

Paradise
No. 1312.

Skull of Python.

Paradise
No. 1313.

Sept. 18, 1912.

Lizard. General color above dark olive with inconspicuous black spots; low down on the sides it becomes gray with many small blackish dots. The cheeks are blackish, with a creamy line above mouth, a yellow rim on the eyelids, and an orange border about the aperture of the ear. The throat is yellow, the belly grayish-white with a wash of yellow, the under surface of tail grayish white.

Paradise
No. 1314.

July 3, 1911.

A small toad with smooth skin & small pointed head. Found in morning lying on a small heap of fresh earth where an elephant had been digging in

Paradise
Sept. '11 to Jan. '12.

a plantation.

No. 1315
to 1320.

3 geckos, a chameleon, and 2 frogs.

Paradise
Feb. 1912.

no. 1321. A large frog (Photographed)

Yabulubun. Nov. 1911.

no. 1322
to 1325. 3 lizards and a frog. ✓ 4 M. 5 stamata

no. 1326 19 lizards, 3 chameleons, 2 geckos, 3 snakes.
to 1355. and 3 frogs. 3 tree snakes (07-66) R12098-99.
? 1 snake head (07-98) 12/00 R12152

no. 1356 10 lizards, 2 geckos.
to 1367

Paradise. Nov. 1911 to Feb. 1912.

no. 1368 3 lizards, 2 chameleons, 5 blind worms, 1 snake &
to 1378.

These blindworms have been dug by workmen from under a hillock, about 5 feet below the surface. They are pinkish in color, and bear much resemblance to earthworms, especially the smaller specimens.

Saramba, March 1912.

no. 1379 5 lizards, 1 chameleon, 1 snake. R12181 (07-104)
to 1385

no. 1386 1 lizard, 2 chameleons.
to 1388.

Vankerschovenville. Apr. 1912.

no. 1389 1 lizard, 30 tree frogs. (The small spotted tree
to 1419. frogs are yellow with red spots.)

Saramba, May 1912.

no. 1420 3 lizards, 2 chameleons, 2 geckos, 2 frogs, and
to 1429. one blindworm.

no. 1430 14 lizards, 1 chameleon, 19 geckos, 1 snake, 2 frogs
to 1469. and 3 toads.

no. 1470. a large lizard. Plays dead and often
twists its tail, as photographed. No 1608

Saramba

May 1912.

nos. 1471
to 1498 3 lizards, 25 frogs and toads.

nos. 1499
to 1527 12 lizards, 1 chameleon, 10 geckos, 2 frogs, 4 toads.

Saramba, June 1912.

nos. 1528
to 1607. 24 lizards, 1 chameleon, 33 geckos, 3 blindworms,
6 snakes, 13 frogs and toads. 1 snake (07-45) P12035
2 snakes R12263-4 (07-171) 1 " (07-94) P12144
(07-123) P12302

no. 1608. A large rough-scaled, brownish lizard, streaked
above with yellow. (Photographed.) from life.

~~Crocodiles~~ in holes in the ground in the ~~florations~~

no. 1609 a young crocodile, a turtle, 2 blindworms
to 1622 6 lizards, 4 snakes. 2 snakes (07-171) P12265-66

no. 1623. A large lizard ~~♂~~ dull gray in color, with small
scales. (Photographed.) The entire skeleton has been
preserved - see plaster-tin marked no. 1623.

Was found in the bush about ten inches
below the ground in an excavation
of a former small termite hill to
which a very small entrance hole
led. Its smothered glossy edges
indicated at once that some living
creature was habitually passing
through this hole. With the effect of
a lance a native knocked down
the edges and we were all surprised
to see this large lizard. The natives

told me that it was rather scarce and
they never saw more than one. They
were much afraid of its bite and
believed it to be poisonous.

The lizard behaved very stupidly
never tried to bite or snap after one's
hand. But ~~preached~~ ^{held firmly in the hand} the forelimbs
firmly against his breast and tried
to liberate itself by scratching with
the sharp claws of his hindlimbs.

It also tried to free itself by wrenching
& turning his body & especially
by dealing powerful blows with
its tail. If some object was held
before its mouth it could easily
be carried everywhere in simply
getting hold of the stick held
firmly between his teeth.

It would play dead in any ^{ordinary} position
and one photograph was taken
with one of his forelimbs in his
mouth. It would indeed
grab just as well any of its limbs or

Garagula June 1912

no. 623, bair as a strike when held before his mouth.

Usually it would squat as the of the photograph shows but sometimes after being played death it at once would straighten out his limbs (in a vertical fashion) with its body raised high from the ground and its tail curved down ward it seemed to run to safety. Its position then resembled one much of the large skeleton of *Enicospinus* in the Am. Museum.

When annoyed it continually drew air in his lungs increasing thro its volume considerably and then always made a loud hissing sound. He would give off the air slowly & renew it when necessary.

When lying on the ground and rapidly approached he would fearlessly attack in running.

Garamba June 1912.

towards his enemy and looking
with its tail he would deal out
serious blows.

The gen. col. was dull darkish gray
above and whitish below.

No. 1624 Land turtle, juv.

No. 1625 No. 1627 Tree longtailed lizards.

Garamba July 1912.

No. 1628 Red sided lizard, Photograph from
a dead spec.

No. 1629 Lizard dark Gray blue with about
half of long limbs Photograph from
a dead spec.

No. 1630 Longtailed lizard Photograph from
a dead spec.

No. 1631 Tree frog. ^{head & shoulder} ~~above~~ face with silvery
reflections, back light brown and two
darker lines on sides. Abdomen whitish
silvery. Iris bronze with black
ring. Photograph from dead spec.

No. 1632 frog - light rufous gen. col. above.
patches & lines of blackish, throat
mostly blackish. Many spec. shown

Garamba July 1912

No. 1632. a green dorsal line. Photograph from dead spec. ^{apic.}
faredje. Sept. 28. 1912

No. 1635 Geckos Photograph from dead spec.
Garamba July 1912

No. 1634 Snake R12145 (87-94)

No. 1635 Snake

July 5 1912 Snake, had swallowed a half grown
No. 1636. tad which hopped away when disgorged
apparently uninjured. Caught in
a field.

July 10 1912 Snake. Iris bright green. Head above
No. 1637 med brown, throat bright yellow
at sides. Gen. col. above & below
buff-brown with pale blue spots
visible between scales.

faredje Aug. 1912

No. 1638 lizard

No. 1639 Geckos

Sept. 21.
No. 1640. Large viper Photograph only from
a dead spec. Skin decomposed became
useless. H. 910 mm. Length of tail from
anus 580 mm. Iris pale dull yellow
faintly veined, pupil vert. elong.

Paraguay Sept 28/1912

No. 1641.

✓ sides of neck olive gray. lower surface with exception of brownish tip of the tail white & glossy with yellow tinge on lower surface of hindlimbs. A fine yellow line on eyelids. Iris yellowish. The edges of upper mandible dirty yellowish except the light brown scales at the tip. A series of yellowish specklike markings on the brown upper surface of hindlimbs.

✓ Photograph after death

No. 1642.

lizard male. Head & neck above dark greenish brown with a tinge of reddish ^{on the front of the head} ~~except~~ the tail in its lower two third ~~which~~ is brownish red. The upper portion of sides brownish green with a bright orange line in middle from in front of fore- to base of hind-limbs, ~~between~~ ^{on} hindlimbs ~~the orange line~~ ^{at base} continues for about 4 cm as a pale yellowish marking. Sides below the orange line olive gray.

Photograph

Foradje Sept 28/1912

No. 1642.

✓ Upper surface of hind limbs brownish red - of forelimbs brownish. Mandible & throat black (glossy) interrupted by a few pale blue scales as on the edge of upper mandible. The scale at the tip of upper jaw light brownish from corner of mouth nearly to in front of forelimbs a pale yellowish line. Behind and above tympanum three black spots interrupted by pale yellowish green cross markings. A pale bluish line on eyelids & a few spots of same color at edge of operculum & in front & behind eyes. Lower surface up to anus pale bluish. Beyond anus pale yellowish, the entire underside glossy.

✓ Photograph after death.

No. 1643.

✓ Same lizard as above but evidently a younger male. Gen. col. dark blue brown up to and slightly beyond base of tail. Throat

Sept 28/1912

No. 1643

orange same col. on sides of neck
The lateral orange line is much paler.
Some pale greenish specks on upper
surface of forelimbs, rest of hindlimbs
uniform brown. Ventral surface
of tail as above.

No. 1644

V

Same lizard as above, black & orange
scales mixed on throat. Two yellow
at angle of mouth and behind tympan.
Glossy very bright. On sides no trace
of a lateral orange line but only
a few pale blue scattered scales
on the olive gray sides. A few
pale blue specks on upper surf.
of forelimbs. Tail as in 1641.

No. 1645

V

Chamaeleon

lizard. Gen. col. above olive brown
with many irregular black markings;
fine black lines showing more
conspicuously the divisions of
scales upon the crown. Upper portion
of sides reddish brown, lower
portion of sides olive gray. Sides
of neck mixed with pale yellow

Paradise Sept 28/1912

No. 1645. scales. A few black scales behind eyes. Posterior portion of the anal, regenerate tail uniformly olive brown. Lower surface pale yellowish glossy white, that of anterior part of tail pinkish with fine black specks. Lower surface of hindlimbs pale yellowish. Lizard same as No. 1642. Anterior part ^{above} slightly beyond neck dark brown, post. part reddish brown. Upper part of sides brownish green, below olive gray. Only a trace of the orange band on the side. From corner of mouth to forelimbs a light yellow stripe. Throat black, mixed with pale bluish scales.

No. 1646 ✓ Lizard to same as above with bright orange lateral line, bright yellow line on side of neck, dark grayish throat mixed with pale yellowish scales. A few yellow specks on upper side of the olive brown forelimbs. There is a trace of the median yellow dorsal stripe of the female.

Paradise Sept 29/1912

No. 1647. Lizard ♀, gen. col. above black with
✓ 6 fine yellow stripes, throat slightly
yellowish.

No. 1648 Lizard as above, ♀ gen. col. above
✓ incl tail dark olive brown. The
five stripes are dirty yellowish, the
lateral ones with greenish tinge.
The throat yellow with some
darkish scales below the yellow.

The yellowest appears on hind limbs
hardly perceptible, sides of mouth
bright yellow throat ext continues
across hyom. opening up to forelimbs
✓
No. 1649. Lizard ♀ as above but gen. col.
somewhat light olive brown.

The five longitudinal stripes dirty
greenish yellow, throat pale yellow.
otherwise like No. 1648.

No. 1650. Lizard ♂ like others described before
but no lateral orange line. The
throat glossy blackish, the ventral
surface glossy pale bluish with a
number of darker scales of same hue.

Foradje Sep 29 / 1912

No. 1651 ✓ Sides of mouth also the line running across tympan. open. pale bluish with a few darker spots.

No. 1651. ✓ Lizard ♂ as above, but with a bright yellow (chrome) lateral line. Body dusky with many pale bluish scales. The edge of mouth pale blue except a yellow scale underneath eye, also a bright yellow line across tympan. open to base of forelimbs.

Sept 30

No. 1652. A small treefrog, gen. col. brown with an arrowlike pattern upon crown and continued as three parallel running stripes upon back, one stripe on upper side of ^{ventral} tibia all of a pale isabel slightly bronzy col. Ventral surface whitish. On throat & lower surface of limbs faint transparent iris dark bronzy. Pupils vert. elong.

No. 1653. 1654. 1655. - 1656 four geckos have been hiding between a folded pack cloth.

No. 1657 ✓ Lizard like No. 1645. With regular belt. Throat chrome yellow.

Paradise Oct 1. 1912

No. 1658, lizard ♀ whole underside pale glossy yellow, on sides of neck yellowish.

No. 1659. lizard, crown upper side of neck and few lines down the back light olive brown 5 yellow band. stripes, ventral surface gray whitish. Tail with pale bluish stripes.

No. 1660 lizard ♂ the five yellow stripes still distinct, the lower lateral one gaudy yellow, with orange near base of hindlimbs.

No. 1661 + 1662 lizards, crown & upper side of neck & few lines down the back pale olive brown, like No. 1659.

No. 1663 lizard - as described above. 1658.

No. 1664 - 1665 - 1666 - 1667 - 1668 - 1669

♂ lizard all with yellow longitudinal stripes, and with ventral surfaces & throats glossy whitish. Along 1669 is above medium brown, 1666 has crown & nape light brown, others darker.

No. 1670 - 1671 - 1672 - 1673 four lizards No. 1671 & 1673 have orange lateral stripe, the

fradje 1 Oct 1912

No. 1670 to
1673 ✓

Cebral. yellow pale bluish on edge
of mouth and some scales of same
col. on sides of neck. The former
with glossy black throat. No. 1672
& 1670 are greenish blue on
sides, no trace of orange stripe
bright like No. 1645.

No. 1674
Oct. 3

no. 1675
✓

No. 1702 Twenty eight lizards, all
those that in younger specimens
have ~~for~~ a bluish tail, females
have always 5 longitudinal ~~more~~
or less yellow stripes, males
in adult spec. an orange line
on side and black throat and
reddish brown tail. Very adult
females resemble ~~off~~ somewhat the
males but they never show
an orange line on the side and
the col. of the tail is always darkish
brown.

No. 1703—

1708 ^{specimen as No. 1645} Lizard with a rather long tail
an orange throat and yellow

Paradise Oct. 3/1912

No. 1703 - ventral side and always many
1708. small yellowish spots on the
sides, which the more northern
longtailed lizard lacks. The young
No. 1707 resembles much the
adults but had a distinctly pale
blue underside of the tail.

missing
1704
✓

They are common about Paradise
but still considerably rarer
than those described as No. 1675 etc.
a large red sided lizard, like
the one painted by Mr. Chapin.

No. 1709
✓

No. 1710 - 1717 all lizards like those under
1675 to 1702, they are all preserved
in formalin in jars.

Oct 4

No. 1718.

Small lizard with short pointed head,
freckled ^{above eyes} with yellowish, gray col. above
dark brown. ventral side a purplish
transparent col. Iris dark bronzy.
pupil roundish (slightly vert. elong.)
There is a ^{groove} line on upper side of nose
and a web of fold running along from eye to eye.
Large scales on head and limbs.

Taken in a *Peromyscus eremicus*.
Also in a test tube in alcohol.

Paradise Oct 4/1912

No. 1719 & 1720 two lizards. like 1675 etc.

No. 1721. a frog - medium size - Bullfrog.

No. 1722 a Gecko -

No. 1723 ^{small} Small chameleon

No. 1724 ^{large} - 1725 two lizards

^{Therapsid} see photo from life.

No. 1726 - 1727. two water turtles
prepared for mounting.

1728 - 1739 twelve spec. of the big (Bull) frog
mostly small.

1740 - 1748 nine spec. of a small frog common
in water holes, gen col. above. from
light gray to dusky & dark brown.
with a number of irreg. dark markings
throat dark gray in a few spec. throat
freckled with gray. Venter all a ~~range of~~
whitish col. Sides marked with
black.

No. 1749 ^{skinned} a lizard, tail broken, a chicken had
killed it. - Ala July 1911.
(The only one in this coll.)

No. 1750 a lizard - common north of Paradise
south of Garamba R. Sept 1911.
The first one seen. The never caught any
at Paradise. There are many at Garamba.

There are
few water holes
in the Paradise

Paradise Feb 1911

- No. 1751. small trial - a treefrog Feb. 1911
to 1752-1753. large vial - two small frogs Nov. 1911
No. 1754-1759 six small frogs - common in water holes
Lettube Paradise Jan 1912.

- No. 1760-1762 three small treefrogs, were sitting
in the hollow ~~tree~~ ^{the rotten trunk}
of a Papaw tree ^{which was lying on the ground.}
No. 1652. Paradise Dec. 1911.

- No 1763.- 1766 four small frogs from a water hole
here was much spawning. Feb. 1912.

- No 1767- large vial - treefrogs. March 1912.

- No. 1768- 1773 six small frogs Guambla March 1912
the three large ones pale buff above
nearly white ventral surface of posterior
on under surface of limbs.

- No. 1774- 1778 five small treefrogs Guambla
April 14/1912.

gen col. above. pale buff to gray. The iris
pale bronzy to dark bronzy variable in the
same individual. The two stripes near
the side grayest green to dark gray
Redd; inside of thigh outside
of calf bright purplish. Ventral
surface whitish.

Bankerchovenville April 9/12.

No. 1779-1780-1781. - Lestube with three treefrogs,
two of them are green - the lower one
pale green, the upper one bright green
from Papyrus swamps.

Bankerchovenville April 15/1912

The medium see description No 1652

No. 1782-1783 large oval - two small frogs found
in the grass near swamps
gen. col. above bright yellow with
pinkish spots.

Bankerchovenville April 14/1912

No. 1784-1793 ten small treefrogs from d Papyrus
swamps gen. col. above from dark gray
to brown, from pale buff to greenish
always with ~~very~~ yellowish on the buff
ones golden stripes. from tip of
nose across eyes to base of hind limbs
ventral surface whitish or grayish.

Bankerchovenville April 16/1912

No. 1794-1802 small small frogs as above.
from same swamp.

No. 1813-1816 four small treefrogs - April 8/1912

No. 1807-1813. Seven small frogs - - April 16/1912.

Banckerchovenille April 16/1912

- No. 1814-1816. three small frogs, notice the prolonged digit
of the lower leg, The medium a young
of a frog common in grassy meadows.
The upper one usually found in wetlands.

Guamha ^{May 3} Banckerchovenille April 16/1912.

- No. 1817-1820. four small treefrogs
No. 1821-1827 seven small treefrogs
6 of them very pale greenish, with
yellowish line.
No. 1828 a green treefrog, with a few dark markings
on head side of limbs.

No. 1829-1835 Seven small frogs May 3-17/1912.

No. 1836-1841 Six yellow small frogs. " -

No. 1842-1848 Seven yellow frogs, bright yellow
with pinkish spots

No. 1849. a gecko - (with a young and a egg which
Mr. Chapin found on the ground, not sure
if this is a young gecko or the egg of a gecko.)

June
No. 1850-1861. twelve small frogs several species

Paradise Oct. 1-10/1912 Guamha June 1912 -

No. 1862-1861 a Safety Valve jar with hundred
 tadpoles & young of *Rhinophrynus*
taken in nearby stagnant pools

June 21 Oct 1 to 10. / 1912

1862 to 1961. 4 water holes -

1962-2026 sixty five tadpoles & young
spec. of *Xenopus*

No 2027 to 2034 eight *Xenopus* in small
safety valve jar.

They are common in some waterholes
stagnant pools of some swampy
brooks. They look much more
like frogs than toads on account
of their ^{smooth} ~~dark~~ greenish gray ^{color} ~~smooth~~
skin. They jump well on the
ground but it looks strange to
see their forelimbs held out straight
ahead of what would be the proleg
pointed inward, & the four roundish
digits ^{lying} ~~up~~ above the other
only the last digits touching
the ground. Taken out of the
water it lies flat on its belly
& tucks its largely webbed
hindlimbs into the air as
if swimming in the water.
It is interesting to observe them

Paradise Bay, 4/10/1912

in a bay filled with clear water. The
~~large~~ mask protruding eyes ^{with their} dark
brown iris ~~and~~ ^{and} an ell rounded pupil
are first of all emerging over the
surface as they are just on top of
the head in perfectly horizontal plan.
Then follows the ^{nostrils} ~~top of the head~~ & one
can see how the small nostrils
~~open & shut~~ ^{open & shut}. Without practically
no movement it slowly sinks back
into the water with only the eyes above
to look about. Thus it comes about
every minute to the surface to breathe
with only the nostrils & eyes emerging.
It very cleverly takes advantage
of the aquatic vegetation to
hide itself. The swimming is
done with the well webbed hindlimbs
of which the first three toes are
armed with small but provided
black claws. The four rounded
digits of the forelimbs that have
no ^{are} ~~are~~ footpad are just like on the ground.

forage Oct 1 to 15 / 1912

No 2049-2103 fifty five small frogs from waterholes
or stagnant pools. ^{with ordinary skin} Gen. col medium,
light or dark brown with many
irregular dark markings, throat &
underside of limbs jelly like trans-
parent col., ventral surface whitish.
They all have a dorsal line of greatly
varying width & still more varying
color. pale brown - pale reddish brown
yellow - yellowish - bright & pale
green are the most common; those
with the broad dorsal bands show
sometimes a much paler line in the
middle & the broad band is usually
bordered with black line or markings.
The females have much spines.

No. 2104-2143 forty small frogs in the same
medium sized safety valve jar, taken
in the same waterholes with the above
(2049-2103). The skin looks rough
as many of the darker markings on
dorsal surface are slightly raised

Paradise Oct 1 to 15/1912

No. 2104 gen. col. above from pale gray to
No. 2103. darkish also pale brown. with many
dark markings of which ^{the} spots
black spots just on the shoulder are
fairly regular. There is also a fine
light colored bar between the eyes.
The males have a dark throat. The
abdomen whitish with a tinge of green
towards base of hindlimbs. The limbs
especially hindlimbs diffused darkish
transverse bands. The iris varies
either brown or golden. The under side
of hindlimbs translucent.

No. 2144-2145 two frogs. gen. col. above very pale brownish
with black markings on sides of ^{head} neck
body also on the limbs, a few markings
on the back. Grayish transverse bands
on hindlimbs. ventral surface
creamy white (a tinge of yellow)

No. 2146 a small toad.

No. 2147-2148 a pair of tree frogs. like No. 1774.

Oct. 16/1912 parade.

No. 2149-2159 eleven young bullfrogs

No. 2160-2161-2162-2163 four lizards with lateral

Oct. 17/92 orange red stripe.

No. 2164-2165 two blindworms gen. col.

Photo / dark bluegray, with palegray interstices
(Photograph)

Oct. 18

No. 2166 - a snake gen. col. above dark blue
R11991 gray ventral surf. Nth first?

Oct. 19

No. 2167 a Gecko (large)

No. 2168-2169 two small chameleons

Oct. 20

No. 2170-2171 two lizards / the species with the
five longitudinal, yellow stripes.

No. 2172 Land turtle ♀ had two large eggs
with still soft whitish shell in the
oviduct; they were blown & ruptured
cracked & fell to pieces. They measured
when fresh 29 mm x 40 mm &
29 x 39 mm. There were three
other eggs greatly enlarged.

Photograph.

Photograph from a *afterformed* eye.
prep. for mounting.

Oct. 22.

No. 2173 Snake - poisonous. gen. col. above
med. greenish brown, with black

R15267

(09-171)

Paradise Oct 22/1912

No. 2173 edged scales & a few black markings
on head, dirty orange ~~at~~ lower
edge of maxillae & cheeks, a dirty
yellow (with a tinge of chrome)
on the mandible & throat.

Throat

The ventral surface light yellow
with two parallel black & interrupted
lines on outer edges of ventral
surface. No dark brown with
~~gradually becoming~~
~~& pale~~ ^{yellow} ~~about~~ towards the
round pupil.
Photos after death.

No. 2174 a small Blind worm

No. 2175 a gecko

No. 2176 a large chameleon

No. 2177 a small chameleon

No. 2178 ✓ 2179 two large addided lizards

No. 2180. - 2181 two blue tailed lizards. ✓

No. 2182 a small toad

No. 2183. a *Heiropus*

No. 2184, 2185 - 2186. ³ large jumping frogs.

No. 2187 & 2195 9 large jumping frogs.

No. 2196 tree frog gen. col. above a dirty

Paradise Feb. 25/1912

- No. 2196. light brown with three darker longitudinal stripes, a dark brownish band from tip of head across eyes down to ^{base of} hindlimbs, this band is irregularly ^{edged} bordered by a narrow creamy white border. An border of creamy white on edge of maxillae a line on fore of hindlimbs, a triangle above anus. Ventral surface creamy white. The iris bronzy.

Photo from life

- No. 2197 to 2204 eight small frogs with dorsal line broad & narrow, yellow to ^{light} dark brown.

No. 2205 Hemiphus

- No. 2206. a Small frog - gen. col. above light gray with many dark brown ~~or~~ blackish irregular markings, a band between eyes & two dark spots on the shoulder are constant in all specimens. Throat grayish, ventral surface ^{whitish}.
Photograph from a chloroformed specimen.

found chiefly in waterholes

Paradise Nov 1912.

No. 2207.

Photograph

small frog found in swamps & waterholes. light brown dorsal band. Photograph from a chloroformed specimen.

No. 2218

Photograph

small toad ^{darkish skin} darkish with irregular faint ^{reddish} yellowish & yellow markings, rear angle of mouth $\frac{1}{2}$ pale yellowish folds, ventral surface pinkish.

Its dark bronzy nearly black, somewhat (small) pupil. Photographs from life

It digs rapidly into soft ground using his feet only for firmly getting hold. When he pushes the ground upward with his tiny pointed head. The toes of the forelimb are held much upward when sitting in any position.

It was kept in a tin box with soft ^{grass} ~~ground~~ when the lid was taken off he would ^{slide downward into the hole} ~~descend~~ ^{slide} ~~descend~~ with the cover of ground

covering him well, thus he was perfectly invisible. It never would stay on the surface.

Rather scarce, see cat. No. 17189 1314

Paradise Nov. 1912

- Photograph
No 2209. small treefrog, smooth skin
gen. col. above greenish with a tinge
of gray on sides grayish, ventral
surface milky white. many black
& markings, ~~on~~ black interrupted
dorsal line. a gray squared marking
in front of eyes running
downward. large bronzy snout
protruding eyes, pupil vert. elong.
always tries to hide under
a leaf, log, stone etc. does not
like to sit in the open.

Photograph from life

- No 2210 same as above, probably the ♂
taken at the same time near
a swamp.

- No 2211. Crocodile - skull only
had been shot, in the jungle
but was only found when
entirely decomposed.

- No. 2212. gecko, they often fall down from
the ridgepole of our house which is thirty
feet above ground. they always land upon

Friday Nov. 1912

No. 2211. Their feet 9 mm off, if not caught
apparently unhurt, neither is their
fragile tail in the least injured
though they drop right upon the
bunch-packing of the floor. This the
red still a small white nest
in his mouth the catching of which
evidently made him loose his hold.
In the gastric jar it disgorged a
sort of elongated pellet (15 mm long
4 mm diameter) of wings & feet of
the skins of bodies of moths.

No. 2212. A bullfrog, gen. col. a dark
greenish brown with darker
markings especially on the
limbs. Tympanic shield purplish
brown. Throat pinkish white with
gray & creamy markings
abdomen grayish white. sides
pale grayish green, with pale
yellowish markings near
the ventral surface. This greenish
brassy with a fine diffused black
radiations from the horizontally
elongate pupil.

They never engaged in this
season, but only

Jan 4/1912

- No. 2213 small treefrog, gen. col. above ^{pale} creamy yellow, with pale gray lateral stripes
pinkish toes. grayish in front of eyes.
Dors brown. Ventrals whitish, abdomen
pale yellowish. Thigh ^{feet} bright pinkish
red. Was sitting in a hollow stick.
- No. 2214 a tree snake, ^(middle) cinnamon green
with black markings, iris
dark brown with yellowish fine
ring about the round pupil
See photograph.
- No. 2215. Bullfrog. of the Tungu River
- No. 2216 longlegged frog.
- No. 2217 ^{Jan 1913} med. brownish snake with
yellow underneath & orange throat
had swallowed a (five yellow striped)
lizard (♂)
- No. 2218. Snake, med. brown, yellow under
neath.
- No. 2218 over snake, gen. col. a strong
greenish brown with black stripes
pale yellowish & black underneath
see photograph.

Paradise Jan 1913.

no. 2219 watersnake, young had swallowed
a small fish (66 mm long 18 mm deep)
the snake measures 490 mm.
darkish gray above with brownest
head, on the neck buff yellowish
markings, ventral side, dark gray
& blackish with pale yellowish gray
& white markings near throat.

2220. 2221. 2222 2223. 2224 five

Xenopus in alcohol jar

no. 2225 2226 2227 2228 four Xenopus
in formalin

no. 2229. 2230 2231 three long legged frogs
in alcohol

no. 2232 2233 2234 2235 four pinkish
brown treefrogs in alcohol jar

no. 2236 2237 two geckos in formalin

no 2238 1 long legged frog in formalin

no 2239 a treefrog

no. 2240. small chameleon

no 2241 Xenopus.

no 2242 small frog

no 2243 a small bottle containing various
tiny frogs, mostly pale green with
yellowish white lines

Faradje Jan 1913

No. 2244 small brown beetle with four
eggs of the ordinary water beetle
see No. 1284. here were eleven in all.

No. 2245 Monitor from Jeramba 1 no skull

No. 2246 Monitor juv. Faradje ~~Jan~~ 9 April 1913

No. 2247 a small chameleon

Bafuka April 1913.

No. 2248 } five lined lizard - the most

No. 2249 } common in the villages ✓

No. 2250 } bluish & uniform rough scaled
No. 2251 } ¹¹⁹⁶⁶ _{Water snake found with this no. 11967.} lizard fairly common.

No. 2252 same as 2248 the young with
bluish tail ✓

No. 2253 } young of the large lizard with orange
sides - fairly common here.

No. 2254 lizard with orange throat with
male. - fairly common

No. 2255. a tiny snake. bluish gray with
Bingio yellowish pattern on head &
neck

Miangara. April 1913. March.

No. 2256. Snake black with coral red
stripes March 24 11913.

Niagara April 1913

No. 2257 blue gray snake with pale bluish
R 11992 between scales

No. 2258. ✓ large chamelion (probably killed 359 mm
long)

No. 2259/2260. / 2261 ✓ three chamelions of same
species

No. 2262 lizard, rough scaled young

No. 2263 lizard

No. 2264 snake, cobra, 2070 mm. long, gen. col.
R 12317 dark, nearly black glossy, brownish
on head & sides of neck & its V
whitish yellow on throat, below
throat yellowish, with dark
blue bars, further down on lower
surface bluish gray, end of tail
provided with a
spine like tip. Photograph

No. 2265. dark bluish gray snake, with short
conical tail provided with spring tip.
Tot length 595 mm, length of the relatively
enormous fangs 5 mm. Photograph

No. 2266 small green snake.
R 12086 dark brown iris, with yellowish
(07-60) ring above & behind pupil.
lower side whitish.

Mangrove May 1915

Large snake 189 cm long.

- No. 2267. ^{R12340} brownish green on top of head,
black velvety on upper side mixed
with ^{yellowish green spots} ~~with~~ ^{yellowish green spots}
9 bordered on sides by same color,
the tail end being blue gray, on

Rhomb

lower surface ant. third yellowish
middle third greenish yellow, gradually
becoming bluish gray towards
- from. back. Photograph. ^{90 cm} tail

- No. 2268. ^{R12304} viper - 58 cm. - gen. col. above
grayish green, head somewhat
darker, vent. surf. whitish with
gray. border.

- ^{R12305}
No. 2269. same as above.

- No. 2270. viper. gen. col. above gray. pink
with dark markings, black arrowhead
marking on top of head. 54.5 cm.

- No. 2271. snake slender, green ^{R12089} (0766)

- No. 2272. viper, ~~47.5~~ 47.5 cm. grayish brown
(pink) with dark markings,
black arrowhead on ~~blow~~ ^{about} ^{deep}

- No. 2273. same as above, the brownish
markings some of the scales
are partly edged with white
Rhomb
see photographs.

Misanga May 1913

No. 2274. large blindworm. Tl. 56 cm.
gen. col. dark brown, with light
pale yellowish brown irregular
markings.

No. 2275. viper - with slightly lengthened
head. R. 12306 gen. col. (dark) dull green,
head darker than the rest of body,
ventral surface ^{pale} greenish white
tail with tinge of yellow; front
white; iris bronzy finely dotted
^{slitlike} fine vertical pupil. Tl. 520 mm
l. of Tail 63 mm.

see Photograph

No. 2276. ~~snake~~, dull black as gen. color, light
R. 12253 dirty yellow on cheeks & throat,
(09-148) this yellowish color gradually
disappearing towards the
middle of ventral surface
& turning over to ^{dark} blue grey
with metallic tinge. Iris
grayish bronzy, pupil vertically
elongate. Tl. 1670 mm. from
anus l. of Tail 382 mm

see Photograph in a cell.

Mingara May 1913

No 2277. dark bluish gray snake same as No 2265

No. 2278. small viper ^{with brown arrow shaped pattern on head} general color dull
greenish brown, the markings
are dark brown, a light brown
stripe of the width of these dark brown
markings all along the back ending
in the short tail into a dark brown
line; lower jaw whitish, breast
yellowish, ventral side a
lustrous whitish gray color
towards tail yellowish.

Tl. 485 mm. L of T. from anus 33 mm.
The arrow shaped pattern ^{is} different
from No 2272

No 2279. viper as above, but with ^{regular}
dark arrow shaped pattern on head.

gen col. grayish brown (with a
tinge of pink) the light brown
dorsal stripe uniting the dark
brown markings is only faintly visible
there is also some yellow on
the throat. Tl. 48.5 cm.
a fairly common snake along
the roads.

Muzinga June 1912

No. 2280. viper as above, the light brown dorsal stripe well defined.

No. 2281. green keelscaled snake adu gen.
B12119 (67-68)
col. a dull green color above; pale green on ventral side, black ~~markings~~ ^{markings} in front & behind the eye, yellowish on cheeks & outer edge of lower jaw. Iris nearly black with exception of light green spot above. pupil nearly round.

TL. 865. L. of tail from anus 335
No. 2282. dusky green snake, with glossy crown. Tot. L. 515 TL. 65.
R. 12307

No. 2283. viper as no 2280.

No. 2284. probably young of the common
R12179 (67-104) water snake taken in the lake A.

No. 2285. small snake, dark bluish gray blue
B11912 gen. col. with 4 heavy black longitudinal lines ventral mid yellowish, ^{lighter at the belly} anterior portion of throat as over side of tail more whitish.

Tl 377. mm. T. from anus 85 mm.
the tail not complete.

Malangana June 1903

No 2286. Blindworm as above.

No TL. 357 mm

No 2287. long slender snake TL. 1260 (LT. 355.)

R12290
(09-171) Gen. col. & dark greenish brown
(scales tipped with black)

along the throat, cheeks ^{yellow}
orange. ^{no longitudinal black lines} ventral side ^{all} blackish
green, darker towards & on
the tail. Iris dark brown,
fine yellowish circle about the
pupil, towards the top yellowish.

No 2288. long slender snake TL. 1730.

R12341
(09-242) LT. 405. The gen. col. is a
mixture of ^{dull} bright green, dusky
& black. the crown brownish
green a velvety dark bluegray
(nearly black. ventral surface
pale green, yellowish on
neck & throat, cheeks & lower
jaw emerald green.

Head all beaten to pieces.

No 2289 Small tree toad, gen. col.
a dull light or dark brown

Sierrae June 1913

with two dark lateral stripes, bright
pink on lower side of foot
on thigh, fibre of tarsus.

silvery white on throat.

pale yellowish white on abdomen.
Iris bronze. See photographs.

No. 2290. Snake, a dull & dark green,
emerald on sides of head
& throat, ventral side

Photo

light green. Iris grayish
brown (veined dark) with
yellow ring about (round)
pupil. T.L. 1145 mm L.T. 300 mm

See photograph (with foot
of Dubautree). Three or four black
scales forming a patch right
behind head on sides.

No. 2291. small snake T.L. 255 L.T. 34
R. 12309 dark glossy blue; grayish on
ventral side anteriorly,
posteriorly bluish gray.

No. 2292 Snake. T.L. 838 L.T. 108. Gen. col.
dark blue gray with pale pink

Photo

R. 11993

Niagara June 1913

No. 2292 interstices between scales.

Anterior $3/4$ shows a distinctly greenish tint, the crown is greenish brown but not glossy.

see Photograph⁵⁷ with bunch of grass, snake damaged on back.

No. 2293 2294. 2295

R 12090

92

07.66

Three green snakes ^(No. 2293) dull green above with greenish white spots visible on lower edge of scales, on anterior

$1/3$ ventral surface: throat whitish the two anterior thirds creamy (yellowish), the tail greenish especially toward tip. Iris brown with yellowish ring about pupil. No. 2294 ventr. surf. whitish as in No. 2295, where the greenish white spots on lower anterior edge of scales are also lacking.

No. 2296. nipler - skin & skull, ♀
TL 820 mm ST 100
Skull embedded with salt & alum.

The species found in the plains as in contrast of No. 2297 which is found in the forest.
see color next No.

Niagara June 1913.

No. 2297. *Viper* T. L. 835, IT. 60 mm.

Gen. col. a dull dirty brownish gray; ventral side whitish dotted extensively with fine dark gray, a few large ^{grayish} dark markings on sides at irregular intervals. Iris yellowish brown with vertically elongated pupil.

Skin rubbed with salt & alum

No. 2296. *Gila* color: a mixture of black dark, medium, & light brown & pale yellowish. Ventral surface pinkish white with ~~dark~~ black ^{markings} on edges at irregular intervals; pupil medium brownish (brassy) finely dotted vert. elong. pupil.

No. 2298. & 2299. *Long Large Safety* jaws with ^{chaps} small teeth, they burrow into the ground, after the heavy rains they come out of their holes & are then easily caught, taken in May & June

Kiangara June 29/13.

No. 2300 medium safety valve jar
cont. chiefly small beads
in alcohol

No. 2301. small green bottle, cont. chiefly
small beads in formalin

Kungu

Kungu

No. 2302

snake dark lilac grey, TL. 320th 23^{mm}

No. 2303

gecko.

No. 2304

a small viper

No. 2305

a tree frog

No. 2306

small bottle with various small

frogs of *Xenopus*

July 6

No. 2307

viper, dark dull greenish, with

R 12308

nearly black glossy crown,

ventral surface whitish

near throat a tinge of yellow

TL. 470^{mm} ~~mm~~, C.T. 60. mm.

Iris greenish grey, whitish

pupil, on upper side

many irregular small

white markings, in some

places ~~ad~~ forming

interrupted transverse

markings.

Photos

~~Kala~~ ^{Kala} July 1913

No. 2308 dark blue green snake

R12060
07-46

No. 2309 light gray blue snake

R12051

TL 840. LT 205 mm.

(07-47)

Photo

see Photograph.

No. 2310 a brown slender snake

R12213

(07-48)

Photo

thin neck, broad head

see Photograph. on ^{lower} sides

iridescent colors (bluish greenish

pink) lower jaw whitish, ~~ventral~~

surface ^{slate} grayish blue tint

(glossy) this brownish

greenish viper - gen col.

a dull (emerald) green, darker

towards head with many irregular

transverse interrupted

markings, a few scales

have black tips. Iris

greenish gray finely veined

pupil vertically elongate

lower sides a series of yellowish

of markings. ventral side:

(throat yellowish) gradually

turning to dark ^{blue} green at

TL 545. LT 100 mm. ^{the tip}

Kala July 1913

No 2312. Cobra - glossy black
above with many irregular
yellowish ^{markings} transverse markings. ~~Sp~~
his neck from the head
about 3 inches ^{upward} /
holding the head fairly
high above the ground
TL. 625 mm. LT. 100.

No 2313 + a dark blue gray snake ^{R 11994}

No 2314 + tiny pinkish pale grayish snake
with many irregular chiefly
transverse markings, ventral
side grayish white TL. 295.
LT. 45 mm.

No 2315 & 2316. two tree frogs common
near the swamps

Loko
No 2317. viper with arrow-shaped pattern
on head

No 2318. young specimen of above
No 2319. cobra glossy black with
yellow markings on neck
ventral surface black & grayish
white transverse lines

Poko July 1913

No. 2320. a large frog. in formalin tank
No 2321 lizard from Kala July 1913 in

August

No. 2322 Cobra glossy black crown
alcohol jar + see below

R12318

somewhat anterior of eyes
light brown, partly gray on
sides of head & neck, a brownish tint forming

Photo.

the transition from the glossy
black to glossy whitish gray
color, a few of the bands
from the head down were
tinged yellowish, the others
brownish, the rest of ventral
surface blue gray.
iris dark brown with fine
golden line around the iris

TL. 151 cm LT 24.8 cm

+ Behind the black neck there are
many brown scales & scales
mixed with brown over about
the anterior 1/3.

fairly common

Rango August 1915

No. 2323. bluegray snake R. 11995

No. 2324. a gg. viper

No. 2325. blindworm

No. 2326 giant blindworm, dark brownish, freckled with lighter markings especially on sides, on ventral surface pale pinkish yellowish irregular markings besides the dark brownish color.

Photo

TL. 61.4 cm, diameter in the middle 22 mm.

No. 2327. a small turtle in formalin

No. 2328. Horned viper & skin of skull.

(skin salted) TL. 990 mm. LT. 55.

Photo height of horns 17 mm. Photograph.

No. 2329. small viper ^{just} in formaline, arrow-shaped pattern on head

No. 2330. small bottle cont. 2 small chameleons, 1 gg lizard, 1 toad & 3 tree toads.

No. 2331. snake from a distance glossy black, (close & very dark ^{black} grayish ~~black~~)

Poko Aug. 1913.

No 235 ^{the shell of the} ventral surface with irregular
pale ^{grayish} pink ~~pink~~ markings. Iris
dark blue gray.

The snake taken in the hand tries continually to bring the pointed terminal scale of the tip of the tail in contact with the surface of the hand, just as it could sting with it. In any case this movement ^{may} offer a certain protection as most provided with a stinging like pointish of tail snakes of blind worms act in the same manner & often the natives have assured me that they could sting with like a wasp.

TL. 580 mm. T. 40 mm.

No 2332. cobra, glossy black, brownish
crown, light brown markings
on sides of head & throat,
dirty yellowish bands on lower side
of neck, white irregular markings
forming cross bands. Ventrals pale
TL 670. n. (T) 112 m. dirty black gray

Pops Aug. 1913

No. 2333 large chameleon

No. 2334 - a yg. (Gabaon?) viper.

No. 2335. cobra TL. 2185 mm LT. 350.

Head, portion of neck, skin of
body, & tail, all in formal.

No. 2336. small. Iguana.

No. 2337. viper with arrow-shaped black
pattern on head.

No. 2338. snake, dark bluish gray, with
R11911 dark dorsal band, in the middle
of the light bluish gray ventral
surface pale yellowish white
band, cheeks grayish white
with bars, sides of neck asht
blue gray TL. 453 mm LT. 100 mm.

No. 2339. Blindworm like no 2326

No. 2340 yg. Blindworm

No. 2341. small viper with black arrow-shaped
pattern on head

No. 2342. snake, ^{color a dull} ~~green~~ med. brown.

R12188 along the dorsal line a series
(07-123) of dark brown markings disappearing
towards the tail

Poko Aug 1915

No. 2342 behind the head they show
(Continued) a still arrow-shaped form with
long lateral embouchements
but towards the middle they
take the shape of obliquely
poised squares with the
embouchements separate.

Photo

On the head ^{transversely} some what
elaborate markings of dark
brown on light brown ground.
to iris pale brown with small
vert. elong. pupil. lower
jaw whitish with greenish
creamy tinge, ~~of~~ ventral
surface a grayish white
with purplish on the sides
each scale showing a somewhat
diffused dark gray marking
on the outer edges ^(lateral).

TL 573 mm. LT. 77.

No. 2343. 2344 two chamelions

No. 2345 snake, dark grayish blue, whitest
ventral surface R11996

Poko Aug. 1913

- No. 2352. Blindworm small
 No. 2353 snake, greenish brown,
 yellowish throaty gen. col. above
 a mixture of greenish, darkish
 (grayish) & toward ventral surface
 yellowish scales. Iris dusky
 green with rounded pupil,
 sides of head emerald green
 tints.

- No. 2354. *Copra* TL. 2020. LT. 450.
 R12342 gen. col. a dull black with
 (09-242) few green scales on lower sides
 ventral surface yellowish
 white on throat becomes
 pale bluish & gradually towards
 the posterior third, on
 the tail the blue still prevails
 on the base of tail is replaced
^{nearly} entirely by dark gray.
 was shedding its skin
 on head & neck.

- 2355 a large chameleon
 2356 9 2357 two tree frogs of the
 latter a photograph.
 see color to 2364.

Akengda Sept 1913.

- No 2358. Monitor - yg. spec.
No 2359. treefrog. - *Arundin* like no 2357
No 2360. 9 2361 two (small) lizards -
brown with dark markings
Photo ^{longer} ~~retreating~~ spring, see Photograph of Akengda
No 2362. horned viper (forest)
No 2363. snake slender, with green
R12282 (09-176) head same as 2347 Photograph.
No 2364. treefrog same as no. 2357
gen. col. brown with irregular
black markings ^{forming bands} ~~striped~~ on
hindlimbs. a bronze streak
near edge of mouth down
the sides, also in front of
forelimbs. dark red on throat
washed with very pale yellowish
on the belly the pale tints are
prevalent, some grayish
on lower side on hindlimbs
between the many irregular
dusky brown diffused
markings. a large protruding
eye with light bronze iris
edged with black & horizontally
elongate pupil

Albany Sept 1915

No 2365. & 2366. two ordinary toads.

No 2367. Photo keelad - gray to brown
with, yellow edge on mouth
a green streak from tympanum
down to base of fore limb
the green being above bordered
by ^{fine} brown & yellow line. Iris
(Golden) bronze.

No 2368. small turtle, on ~~head~~ ^{crown} dark (black)
with brown markings. formal.

No 2369. chameleon (large.)

No 2370. small frog.

No 2371. Photo A forest - toad - apuious on sides
gen col. above. brown, with tints
of gray to greenish, near forelimb
on sides towards & including
hindlimbs a reddish brown is
prevalent. a few velvety black
markings on the back & between
eyes, light silvery gray iris;
whitish ventral side also throat
pinkish towards anus
see Photograph.

Akunge Sept 1913

No. 2372. 2373 2374. same ~~loads~~
as preceding.

No. 2375. Blindworm

No. 2376. & 2377. two ^{the} smaller toads
(slightly springy)

No. 2378. ^{R12113} small snake (pale slaty gray
above, whitish throat, bluish
light gray on ventral side.

No. 2379 large blindworm dark
grayish brown with very
irregular markings of a dirty
buff above on upper side.
On ventral side a dirty buff
with lighter interruptions at
each scale.

2380. a small slightly springy toad but
very light brown with the usual
black irregular markings.

No. 2381 upper-horned - 8 mm & skull TL. 780

No. 2382 upper - " - 5 mm & skull TL. 775. LT. 100.

No. 2383. ^{admission toad} large ^{light} & dark gray above
with a few pale yellowish & dark brown
markings.

Orange Sept. 1913

No 2384 short horned forest viper
(black) velvet brown cheeks

Photo This light gray finely but densely
veined towards the vertically elongate

Had small pupil around which is a very fine
a large bird (tail) diffused yellowish line.
the size of a pigeon

Skinn. & skull. TL. 1115. Greatest
No. 2388 ^{date 10/22/13} Col. ^{body 2 green} velvet black with greenish
(2388) head. TL. 7570. LT. 62. R12343 (07-243)

No. 2385. viper, short horned

TL. 1325 LT. 15. Skinn. & skull

No 2386. viper, as preceding information
TL. 62 LT. 35.

No 2387. ~~Col. black~~ TL. 2200. LT. 500

Photo. Had small horned three small snakes.
The whole shape above dull buff
with ^{darkish} ~~darkish~~ ^{hands} ~~hands~~ ^{above} ~~above~~ ^{green} ~~green~~
(07-144) with ^{trist} ~~trist~~ ^{of} ~~of ^{green} ~~green~~
throat yellowish. ventral side
a tinge of purplish.~~

No 2389 ^{R1224} ⁽⁰⁷⁻²⁴³⁾ snake (poisonous) purplish gray
with darker partly indistinct
bands. purplish on ventral
surface with gray dots, forming
also two parallel lines

Orange Sept. 1913.

- No. 2396. Cobra -- above glossy black with
4 yellowish ^{juv} markings the two
first of which form (indefinite)
transverse bands. Iris so
dark brown that the pupil cannot
be seen. Ventral side chrome
yellowish on throat & neck turns
to brownish yellow with black
& brown edged scales. Towards the
tail, which is black, this color
turns to dark gray & black.
T. 660. IT. 147. mm.
- No. 2397. Snake dark glossy bluish gray
R11997 with pale yellowish on ventral
surface. Iris light brown, slitlike
pupil.
- No. 2398. Small Blindworm
- No. 2399. Snake, juv. red stripes & black
pale dirty yellowish crown with
black markings
- No. 2400. Small snake as above, another
one that was destroyed by the natives
had swallowed a small mouse.

Abenize Oct. 1913

no tail

No. 2401. a large Blindworm ^{TL. 487 mm} (dark brown with
above, ventral side dirty brownish
yellow. (Had swallowed ^{of insects} earthworm below)

No. 2402 Photo Large Blindworm, dark bluish grey
ventral side somewhat lighter
glossy throughout. TL. 340. LT. 85 mm.
Has a very long tail that is fragile.

No. 2403 Cobra, glossy black with fairly
soft scales (freshly shed?) TL. 2370. LT. 360.
Photo Skin & skull.

No. 2404 & 2405 two forest lizards (spiny-tailed)
No. 2406 viper, small horns TL 1325. LT. 138.
greatest width in the middle 122.

Plastercast of head. Skin & skull.
No. 2407 viper - same as above, skin damaged
No. 2408 viper, large horned TL. 970. LT. 70.
Skin & skull.

No. 2409 Blindworm, slender, (pale) whitish
pink, found crawling across
the forest road. Its movements
when touched are surprisingly
rapid which causes most people
& probably also animals to let him
go at once. It tries also

change Oct. 1915.

No. 109 to use his sharply pointed tip (tail) in pressing against the skin of the hand so strongly, that one feels inclined to think it might be of some use or able to secure some wound.

No. 2410. Two toads, the small one was sitting on the larger one's back.

No. 2412. same toad as above.

No. 2413. 2414. 2415. 2416. same toads as above.

No. 2417. 2418. 2419. 2420. 2421. 2422. 2423

No. 2424. 2425 forest toad, spiny on sides.

No. 2426. 2427. 2428. three toads, with pointed tubercles (as No. 2410 etc.).

No. 2429. forest turtle the young of it (forming)

No. 2430. snake, with red stripes (sacred?)

No. 2431. 2432 two large Blindworms.

No. 2433 large Blindworm

No. 2434 & 2435 two spiny forest toads.

No. 2436. viper (small horns) TL. 755. LT. 55 mm
Skin & skull.

No. 2437. viper small horns TL. 1400. LT. 163 mm
greatest width 125 mm. Skin & skull.

Orange Oct. 1913.

No. 2438. & 2439 two large Blindworms.

No. 2440. viper, small horns TL. 778. LT. 78.

Skinn & skull.

No. 2441. Toad, small, spiny. dark brown
with dirty pale yellowish dorsal line
many irregular markings of the
same color, between eyes a

brownish patch below white of gape,
and grayish

No. 2442. Viper, dull emerald green, with dark
brown & yellowish markings

forming indistinct ^{transverse} bands
it is greenish finely veined.

No. 2443. & R 11968. Snake, the

body slightly glossier though the
crown is brilliant & appears

black. Each scale of the upper
surface of the body is finely but
irregularly dotted with whitish
markings that gives the snake
a somewhat mouldy look. The iris
is brown, the ventral surface of the
a medium gray. TL. 695. LT. 53.

No. 2444. Snake - gen. col. above. med. brown, the

R 12244 (Og-148)

310
Alpena Oct 1913

No 2444 scales showing ^{many} small irregular spots
of a whitish color. many irregular
dark brown ~~irregular~~ transverse
bands, ^{largely} ~~most~~ behind the head being
darker, many of these bands are
reaching only the dorsal line
but have then a counterpart
either further up or down (on the
opposite side). The crown is ^{pale} greenish
gray, with whitish spots & a few
dark markings, on the pale greenish
cheeks dark edged scales (posteriorly)
The first greenish yellow gradually
turns to pinkish brown.
The transverse bands on the tail
are edged with whiteish. TL. 17.
Shedding (or rather having shed) the
skin.

No 2445 Small Blindworm, flecked
with dark blue gray, ventral
surface whitish.

2446. a large Blindworm

2447 Snake, slender TL. 1133. LT. 402
gen. cl. bright green with black

Orange Oct 19 13

2452. markings on cheeks. Iris dark brown.

was taken by children who had followed its tracks on a rainy day & found a hole (rat hole) where it evidently wanted to sleep. They set a noose ^{the day after being made.} by which it ^{was} caught. The man put it in a basket lined with green leaves & brought it to me. He opened the basket took the coeca out with his hand & throwing it on the ground for dead. Before touching it myself I hit it on its tail with a stick when its head went into the air at least two feet from the ground, the natives taking to flight as suddenly it started off with a rapidity that none had expected, taking regular leaps, but suddenly

Alger Oct 19/3.

2453. Turned & with head raised a foot
from the ground spread its
neck keeping thus motionless
for at least 1 minute. When
I hit it with a rattan on the
head wheel brought it down
twisting itself on the ground.
Skin & skull.

42454 x Snake. TL. 575. LT. 53. mm. Jan col.
R 12029 above. and ^{gray} brown with ^{yellow} black
Photo (01-45) spots ~~for~~ running on each side
The head (crown) darker brown
with perigray (dusted with extremely
fine black marks) the edges of the mouth
dark blue gray freckled with grayish
very small eyes, iris reddish brown
but appears chiefly black. Lower
side dark blue gray with scales
posteriorly edged whitest gray. The
sides dark bluish gray. a faint
dark dorsal line near the tail
running into. Had swallowed
a lizard. (The ordinary kind.)

Change Oct 1913.

2455. a small Blind worm

2456. snake dark bluish gray, pale
R 11998 whitish yellow ventral side

No. 2457. green viper.

No. 2458. Snake, dull velvety black above
yellowish yellow on sides & ventral
surface, dark greenish brown
brown (dark) iris, round pupil
TL 2190. LT. 505. Shin 7. Skull.

No. 2459. small bottle cont frogs. They
show great variations, some
having even a yellowish dorsal
line, but all to throat freckled
with black. light & dark brown
tints are most common & gen.

Neapae
grouper ^{Cal.}
No. 2460. green viper

No. 2461. snake, dull darkest green above
with darker crown, yellowish cheeks
lower jaw & throat. 2 triangular
white ~~spotted~~ ^{irregularly} interrupted markings
from the base of the head. ~~the~~
anterior third many whitish spots

Surper Nov. 1913

2461. especially between the scales, ^{scales} on the parts. Dark, ^{sometimes} transverse markings on the body. ventral surface whitish gray with a greenish tinge. TL. 510. LT. 37.
- No. 2462. snake bluish gray, with faint whitish specks.
R-11969
- No. 2463. Large tree frog.
- No. 2464. large bluish red headed lizard
- No. 2465. 2466. two small forest lizards.
- No. 2467. Same snake as 2461. is dull grayish green in color, & the ~~throat~~ on the lower jaw & throat much paler.
- No. 2468. Snake - like Blindworm
- No. 2469 * Snake - gen. col. & dull dirty brownish on the sides lighter, ventral surface dark bluish gray, & pale yellowish streak from the corners of the mouth along the sides. small eyes, round pupil & reddish brown iris.
R-11970
- No. 2470. Cobra, & long black above
- No. 2471. Red lined snake
- No. 2472. Blindworm.

Nieper Nov. 1913

No. 2473. Large Blindworm

No. 2474 + dark blue gray snake R 11999

No. 2475. Snake (gim) light green head, yellowish
throat, greenish gray, & grayish ventral
surface.

No. 2476 + same snake as No. 2469 R 11933
had swallowed a yg rat.

No. 2477. spurious forest head.

No. 2478. green viper

No. 2479 + 2480. water snake that the women

11934
33 of the village catch in baskets set for
crabs, shrimps & catfish, they are usually
drowned in these baskets. One of them
had swallowed a small catfish.

No. 2481 yg. horned viper

No. 2482. water snake

No. 2483. yg monitor

No. 2484. snake green with black, pale blue gray
ventral surface.

No. 2485. snake dark blue gray above with
yellow ventral surface, grayish
green on sides

No. 2486. water snake.

Niepo Nov 1913

No. 2487. snake, mouldy greenish gray
R12283 with green head. (09-176)

No. 2488. cobra, black with transverse
bands

No. 2489 green viper

No. 2490. snake dark gray & green, with
R12261 pale bluish streaklets on edges of scales,
09-66 green (darkish) head, yellowish on
sides, yellow lower jaw & throat.
recm transition to the pale grayish
green ventral surface.

No. 2491. same snake as No. 2484 but with
grayish pink ventral surface.

No. 2492. & 2493 two Xenopu.

No. 2494 viper, greenish & greenish gray with
lighter transverse markings
& black spots

No. 2495. large Blindworm

No. 2496. small Blindworm

No. 2497. water snake - R11936

No. 2498. small horned viper

No. 2499. large water snake.

No. 2500. green viper

Snake how 1913

- * No 2501. Metanake - R 11937
- No 2502. Buff colored cobra - damaged ^{R 12245 (07-148)}
- No 2503. large blind worm like snake
- No 2504. green viper small.
- No 2505. small brownish snake with
^{R 12205 (07-134)} bright pink (bright rose) coloured
 ventral surface.
- No 2506. tree toad (large)
- No 2507. Cobra, black above, green head,
^{R 12348 (07-242)} yellow ventral surface.
- + No 2508. water snake, brown above dark blue -
- No 2509. grey ventral surface. - R 11938
- No 2509. small snake dusky green above,
^{R 12067 (07-260)} ventral surface light yellowish green
- No 2510. Horned viper.
- No 2511. ^{R 12330 (07-230)} water snake, glossy brown with
¹¹⁹³⁹ narrow ventral, often ^{angular} triangular
 markings towards ventral surface.
- No 2512. water snake as 2508 & R 11940
- No 2513. small snake, black but each
 scale covered with minute dots
 that gives it grayish brown
 look, though the underbelly

Chiapas Nov. 1913.

no 2513 are black, the head yellowish
R-11970 cream also finely dotted.
The ventral surface bluegray
with fine whitish irregular
markings

no 2514 same as preceding but ~~black~~
R-11971 nearly dark in front only behind
the eyes the creamy yellowish
is conspicuous. There ~~is an~~ ^{is an} indefinite
~~also some~~ indefinite transverse
pattern.

no 2515 slender snake with green head
R-12284 capable of inflation of the
(07-176) banded throat. The body color
is a mixture of green, gray,
brown & black. The darker shades
forming ^{indefinite} ~~irregular~~ ^{transverse} pattern.

no 2516 same as above. R-12285 (07-176)

no 2517 a tiny brownish snake, brownish
R-12206 above, pinkish below, the head
(07-131) darker, towards the posterior half
an arrangement of parallel wavy
lines, of dark brown, black & light brown

320 *Maia* nov. 1913.

No 2518 Snake, dull grayish green as gen.
col. above. The crown of neck

Photo

however somewhat glossy
a curious very irregular narrow
pattern of black, creamy yellowish
or reddish brown tints.

The pattern on the crown consists
of grayish (yellow) markings, the
tip of snout and in front of eyes
brownish pink tinges. The iris
brown with lighter brown edge
about the round pupil.

The ^{transverse} pattern (spoken of above) gradually
disappears towards the tail, the
tip of which is ^{above} uniformly

dusky (brownish) green. The lower
jaw milky white the scales of the
neck edged posteriorly with yellow
the ^{glossy} ventral surface yellow (med.)
with bright orange tint near edges.

near tip of tail (ventral surface)
brownish. TL. 1170 mm. LT. 563.

Sides slightly lighter than back.

Siapa Nov. 26/1916

No. 2519 Horned viper - small.

No. 2520 ^{R 11941} Watersnake, brownish above, dark blue gray
on ventral surface.

No. 2521. Photo watersnake, glossy, dusky greenish
brown, with yellowish under side

freckled with blue gray, above
irregular black transverse markings.

No. 2522. same as above. but much larger

Tl. 1870. LT. 284. ^{largest} diameter 59 mm.

Skin salted & skull.

No. 2523 green viper.

No. 2524 slender snake with green head & inflatable
hood neck

No. 2525. The largest forest toad.

No. 2526. large cobra, green head, dull dark velvety
R 12349 above, yellow ventral surface. (07242)

No. 2527. Horned viper Skin salted & skull

No. 2528 small horned large viper. Skin & skull

No. 2529 viper small horns
all skin & skull

No. 2530 Cobra some glossy (nearly) black, dark blue
gray on side, throat all over chrome yellow
dark brown iris, round pupil

Tl. 2315 LT. 517. Skin salted & skull

Mapu Nov. 26 / 1913

No 2531 Cobra TL. 2500. LT. 580 mm. gen. col. above
dull velvety black, crown emerald
green, cheeks yellow, lower jaw yellowish
green, dark brown iris, round pupil,
chrome yellow throat & ventral surface
the scales edged with fine line of black
gradually turns bluish gray as the
anterior tail (ventral amp)

No. 2532. 2533 water snake, keeled scales. R. 11942-3

No. 2534 & 2535. Blindwormlike snakes

No. 2536 Snake, small dark with gray dotted scales
R. 11992 & light head.

No. 2537. Cobra, black, striped cheeks, bands
R. 12320 of pale yellowish color & neck & creamy
lower jaw & throat.

No. 2538. water snake, glossy greenish brown
irregular transverse bands.

No. 2539 Horned viper.

No. 2540. Water snake as 2538. had swallowed
two

No. 2541. large snake above dull velvety black
R. 12754 ventral surface anteriorly bright yellow
(Op. 148) just. dark blue gray

Mciper Nov. 27/1913

- No. 2542. large snake, dull velvety black above
R12350 with green crown. 07-242
- No. 2543. Blindworm
- No. 2544. grayest Blindworm
- No. 2545. Green viper
- No. 2546. slender snake blue gray above, greenish
on the sides, yellowish on the ventral
surface but turning gradually to yellowish
green as on the (lower side) of the tail.
- No. 2547. slender snake green with black.
- No. 2548. snake, dark bluish gray with pale yellowish
underneath. R 12000
- No. 2549. largest forest toad.
- No. 2550. snake, light brown above with black spots
on either side, bluegray speckled
with white on ventral surface
- No. 2551. water snake, keeled scales. R 11944
- No. 2552. fairly slender snake dark blue gray
with green above (on back) a (reddish)
a few blackish markings on crown
brown head with a yellowish line all
the transition to pink ventral
surface an enamellike yellowish
greenish color, small blackish eyes
sides of head & edges of lower jaw greenish
pink

Photo

Nirpin Nov. 29/1913

No. 2553 Black Cobra with yellowish throat
R12321 & a few transverse bars of same
col. on venter. surfy

No. 2554, 2555, 2556 three water snakes
with keeled scales R 11945-47

No. 2557 same snake as No. 2552 the black
on the crown is more defined

No. 2558 large blindworm

No. 2559 a smaller grayish blindworm

No. 2560 large glossy water snake with
black transverse bars

No. 2561-2562 two green snake with ^{reg.} bluish
*R2063 green markings transversally
(0766) arranged.

No. 2563. largest forefooted.

No. 2564 large velvety black snake with
Dec 19/13 greenish crown R12351 (07-242)

No. 2565 blindworm grayish

No. 2566 snake with brown head like No 2552
crown blackish.

No. 2567 dark blue gray snake, light ventral
R 12001 surface flecked with dark gray

No. 2568. cobra? pale brownish

R12246 (07-148)

Maipu Dec. 1913

- No. 2569. Brown watersnake R 11948
No. 2570. large blindwormlike snake
No. 2571. X large black cobra with yellowish
R 12322 transverse stripes on lower
surface of neck.
No. 2572. (small) Blind snake
No. 2573. young python.
No. 2574. greenish snake with black irregular
transverse stripes.
No. 2575. dark bluegray snake dusted finely
R 11943 with whitish
No. 2576. X dark bluegray snake R 12002
No. 2577. 2578. two of the largest forest snakes.
No. 2579. X watersnake, ^{large} had laid eggs, one
was left inside. - R 11965
No. 2580. X slender green snake R 12104 (07-67)
No. 2581. slender green snake R 12105 (07-67)
No. 2582. watersnake, brownish R 11949
No. 2583. dull greenish viper, with irregular
transverse markings.
No. 2584. greenish snake.
No. 2585. X dark bluegray snake, with
R 12003 reddish brown iris

Paper Dec 1913

- No. 2586 largest forest toad
No. 2587 green viper
No. 2588 snake with red parallel stripes
No. 2589 largest forest toad.
No. 2590 dull green viper(?) with irregular
trans. vernal bands & yellow throat
No. 2591 cobra green head - young of the
No. 2592, 2593 two masticated, red veiled.
No. 2594 & 2595 a large & small specimen
R 11974- of the glossy dark blue gray
75 snake, ^{scaly} dusted with a yellow gray.
No. 2596 masticated, red scales R 11952
No. 2597 a brownish green snake, freckled
R 1189 with black yellow & curious pattern
(07-123) on the crown, lower side a grayish
green dusted finely with black, yellow
on lower jaw & throat. Iris grayish
green finely veined. vertical pupil.
No. 2598 a purplish brown compressed snake, finely
R 11225 dusted with black, a few irregular
(07-148) black spots on back. Pink on
ventral surface with fine black
markings those near the ^{under} edges

Mexican Dec. 1913.

so arranged as to form two parallel running indefinite lines. ~~Large~~ protruding eyes (yg. spec?)
Irisnel veined brown & gray, round pupil

No. 2599. Monitor ♂ TL. 1685 mm. LT. from middle of anus 1040. mm.

Stomach cont. a small water snake like No. 2596. Two large snails (the mollusks only) practically unharmed except without their shells. The remains of several crabs ^{also} without the carapace but the feet were practically all there. Skin (salted) skull & leg bones a good specimen. crocodile (broad nosed) had chiefly swallowed crabs.

No. 2600. TL. 1145. mm. LT. from middle of anus 545. Iris ^{tho. might} yellow green. Skin with skull in the hide leg bones.

No. 2601. Large laterally compressed snake

Niepu Dec 1913

- no 2601 TL 1285 mm. LT. 505. greatest diameter
had small ^{yellowish} ~~greenish~~ ^{greenish} ~~greenish~~ in the middle 230 mm. Skin salted
(scales are coming off) & skull.
- no 2602 large cobra, black, dark brown
iris. TL. 2400. mm. LT. 558.
Skin salted & skull.
- no. 2603 green viper, the somewhat indistinct
yellowish transverse pattern, the yellowish
spots on the sides, the yellow color
on the throat & lower portion of neck
is very characteristic of this species. &
well shown in this specimen.
- no. 2604 green viper, small spec. & much
duller in color throughout.
- no 2605 blind worm like snake.
- no. 2606. ✓ largest forest toad.
- no 2607. + water snake, blackish. R-11956
- no. 2608. + dark blue gray snake, with finely
dusky scales R. 11977
- no 2609. + slender brownish snake with
R 12036
(09-46) darker head & sides & yellowish
ventral surface.
- no 2610 small grayish brown snake, dark

Mapa Dec 1913.

- No. 2610. blue gray ventral surface
- No. 2611. x small slender snake, reddish brown dorsal stripe, on either side a dark brown band edged above & below by a dark gray line, bright pink ventral surface. crown nearly black, two light brown spots at base of head
- R12207
(07-134) snake with 5 colored stripes. light brown iris & nearly round pupil.
- No. 2612.
- No. 2613. cobra, black with white irregular markings, forming interrupted transverse stripes markings, creamy on throat, yellowish bands on neck, dark blue ventral surface.
- No. 2614. x watersnake, beaded scales, yg spec. R12201
- No. 2615. blindworm like snake.
- No. 2616. Snake nearly glossy, black but rather dark green, the lighter sides are distinctly greenish, ventral surface bright yellow including lower jaw one whitish markings on throat, tail throughout blackish. Iris dark greenish gray, pupil vertically elongate. crown especially glossy
- had swallowed a large grasshopper
- bee food

Piapa Dec. 1913.

No. 2617. green viper.

No. 2618. * watersnake, glossy with black transverse markings.
R-11921No. 2619. ~~short horned viper~~ ^{short horned viper} No. 2619. specimen

No. 2620. 5 coral red striped - snake

No. 2621. dark greenish snake with yellow ventral surface, glossy crown

No. 2622. snake with 5 coral red stripes

No. 2623. * watersnake, keeled scales R-11953

No. 2624. dark blue gray snake, dusted finely with pale gray, in this spec. there is a somewhat indistinct transverse pattern formed by the pale gray markings.
R-11976No. 2625. Puffadder (long horned viper)
Photo Skin & skull. TL 760, LT 60 mm. Photo from life.No. 2626. short horned viper, skin & skull.
TL 1375 mm, LT 95 mm. Photo from life.

The Puffadder when irritated, takes in a considerable amount of air increasing thus its thickness, but especially its

Niepu Dec. 1913.

No. 2625

No. 2626

The ^{at intervals} ~~unequally~~ is given off in hissing ^{noise} ~~high~~ the puffadder is somewhat more lively than the short horned viper which also increases its volume but makes but little noise in giving the air off, it often flattens itself out on the ground ~~increasing~~ its width about one third & ~~losing~~ ^{losing} them the typical triangular shape (~~on~~ ⁱⁿ ~~intersection~~). Both species are hardly dangerous ~~as~~ ^{as} accidents to human life are practically excluded. I have heard repeatedly that they have been stepped upon when lying between the ~~leaves~~ ^{leaves} in the forest without striking & I have seen natives picking them up without the slightest fear. They pretend they only strike when ~~roughly handled~~ ^{irritated}, which is hardly true with regard to securing their food.

Miami Dec. 1913.

No. 2625 I found birds, rept & frogs in
No. 2626. Their stomachs which clearly
shows that they are able to take
successfully all animals that they
either get by moving along
or these animals incidentally
passing them when they are disposed
to ^{to} ~~move~~ ^{move}.
I never heard of any case a
native being bitten by them,
but when irritated they are as rapid
as any other snakes, throwing
themselves forward with great
rapidity & often raising
the anterior portion of their body
somewhat from the ground.

When their fangs are pushed
forward with a stick the poison
is often given off as a fine streamlet.

No. 2627 Broadnosed crocodile TL. 1240 mm.
LT. 550. Had swallowed a
number of crabs & a few frogs.

No. 2628. Broadnosed crocodile TL. 655.
LT. 315. Skin salted & leg bones

Michigan Dec 1913.

R-11954

- No. 2629. x Watersnake keeled scales, has eggs.
No. 2630. Blindwormlike snake
No. 2631. Green slender snake, had swallowed
a small tree toad. R12106 (07-67)

Jan 1914

- No. 2632 green viper
No. 2633. glossy snake, grayish brown
with a few dark markings,
light gray markings on crown
(which is dark brown). ventral
surface dark blue gray
No. 2634. x small dull velvety brown snake
R12208
(07-134) with a ^{two} light brown marking
at base of head, 1 pale grayish pink
on sides of head. dorsal surface
grayish turning gradually to
blue gray.

From Museum

- No. 2635. Slender snake.
No. 2636. snake greenish head, yellowish
underside, yg open.
No. 2637. ✓ largest forest toad, photo from
life. During the rainy season
it is practically found everywhere
as then it starts to just travel the

Photo

Reynolds Jan 1914

2637

at the dryer mounts it makes a
sort of flattened hollow where
it seems to rest for a long time
on the same place. frequently
usually the moist places in
the forest, though not exactly
the brooks or muddy swamp
but those sides where leaves
& humus is abundant.
At even slight pressure ^{at the glands} a thick
whitish excretion is expelled
from the glands at a distance
^{(though ~~at~~ ^{the} ~~glands~~ ^{is often} ~~empty~~ ^{excreted}).}
of more than 5 feet. It plays
dead when longer annoyed
usually squats flat on the
ground with head pressed
down, so the nose reaches the
ground, the ^{usually} high standing
(eyelids) eye cover sinks down
& the eyelids are nearly closed.
but gradually they are opened
again & it soon escapes
in leaps of about 10 ft long.

The websters
are greatly
afraid of this
whitish excretion
& pretend
it destroys
the eye cover
or kills the animal
it comes into
the fork.

Chapin Jan 19-4

No 2638. a keeload. grayest brown. ^{smooth skin}

No 2639. water snake, glossy

No. 2640 Treeoad ^(large) in the family granulated skin. Gen. col. above greenish

Photo brown, with pale yellowish dots, from life. but there are most beautiful golden ^{transverse} stripes (but so faintly laid out as hardly to be made out from the greenish

see 3069 etc.

brown background, the one across the eyes and a few across the back

reaching over to the thighs are ^{highly} more distinct. The iris med brown

finely veined, ^{in gray} when in the shade the

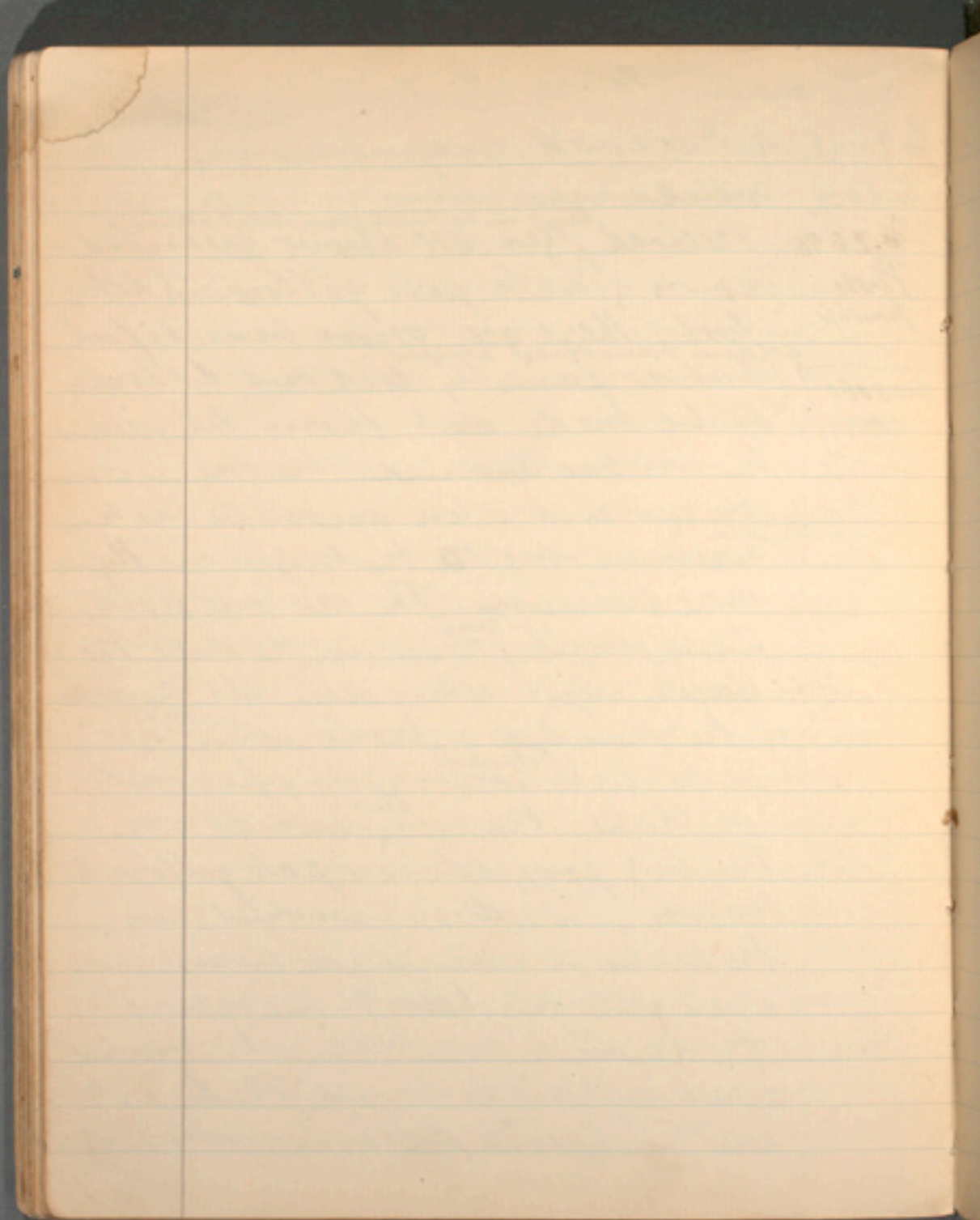
vertic. elongate pupil nearly takes half the room of the ^{big} protruding eyes.

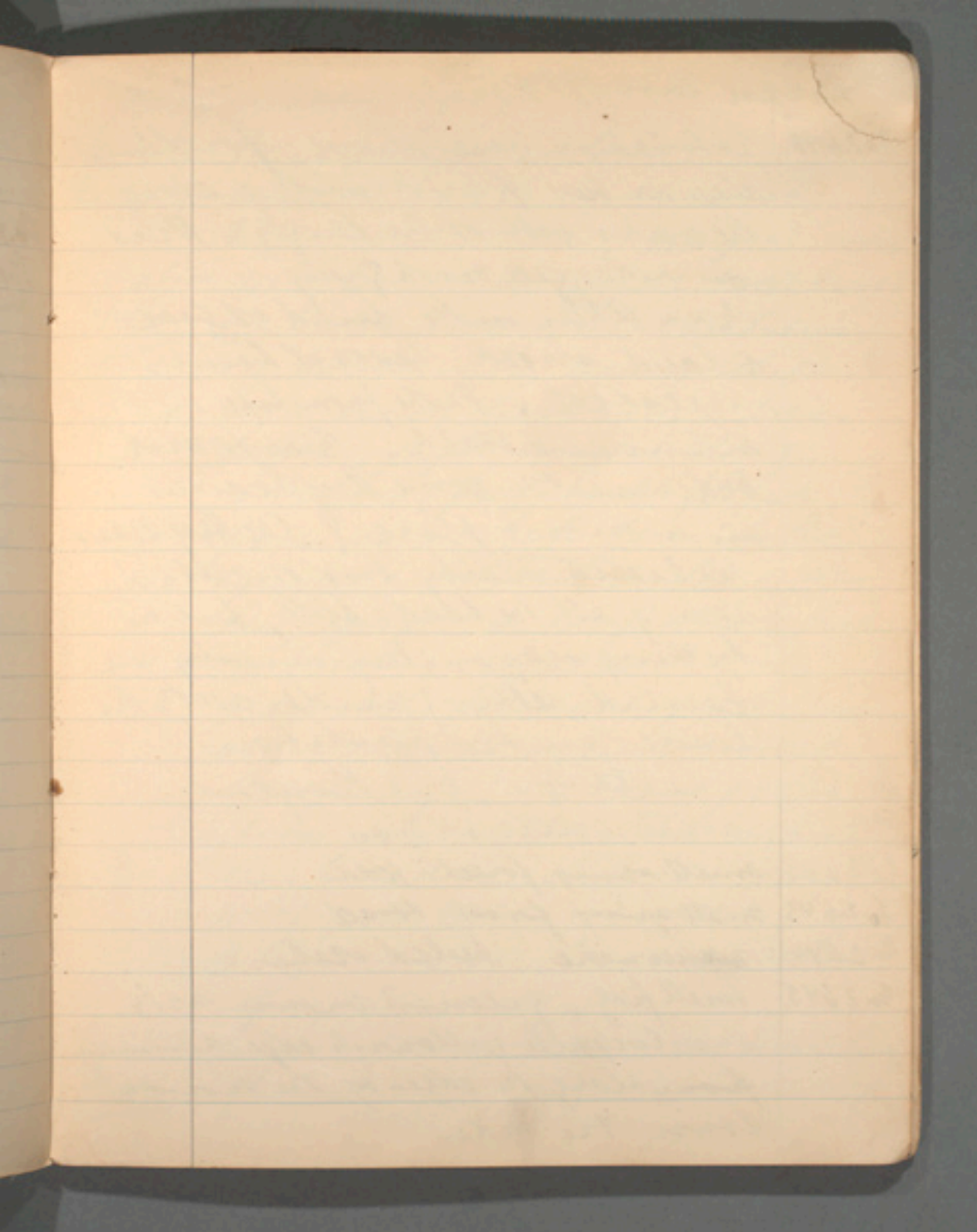
In the light ^{the pupil} contracts & becomes slitlike, the eyes ^{also} sink down.

The big footpads are pale yellowish brown. The sides are beautiful green.

The limbs in general pale greenish gray a pale yellowish ^(large) line across

the arms to hindlimbs. ventral surfaces pale yellowish white with pale purplish pattern, yellowish





Mapu Jan 1914

No 2640 patches on base (above), forelimbs
also on base of hindlimbs & along
the outer side of the thigh. Head
on sides greenish gray.

When taken in the hand it gave
a loud shriek, several times
repeated. Photo from life on
a banana stalk. Was found
underneath some dry leaves
in a moist place. The dry season
has lasted nearly two months
now & all the lizards hide, but in
the rainy season they usually are
found sitting underneath the
leaves in the plantations.

No 2641 same as above, but throughout
a pale greenish gray

No 2642 small spring forest road

No 2643 small spring forest road

No 2644 waterhole, peeled scales R-11955

No 2645 small frog, greenish brown with
a silvery pale yellowish edge running
from along the edges of the mouth
down the sides

Maipon Jan 1914.

No. 2646. The largest forest toad.

No. 2647 same as 2645. but a much larger specimen; grayish brown above with darkish irregular markings on back, many ^{dark} reticulations on hindlimbs, many dots on light brown forelimbs. Iris golden, pupil horizontal. long.

Photo a brown & faintly dark streak from the nostrils down to the tympanum. ^{diffused} ~~it is dark~~ on the sides the ~~background~~ ^{background} is very streak from the ^{light} throat is greenish but gradually fades out & on the sides shows only faint disrupted markings. The throat & belly is very with a greenish tinge. The hindlimbs below grayish with pale yellowish markings a light brown line on edge of upper eyelid

No. 2648. Largest forest Toad. 146 mm long
Photo from life

May 1914.

No 2649 frog like No 2645.

No. 2650 yg of the short horned forest viga
was very pale, I did not have
~~any~~ of the many lines of
diffused colors.

No. 2651. small tree toad, 30 mm long, mid brown
above, with a pale yellowish white
line from ~~side~~ tip of head over the
eyelids ~~extending~~ to a large patch
of same color ~~behind~~ on
the sides of head, a few dots on
lower back & on joints of hind limbs.
ventral surface jelly like greenish,
throat & breast ~~above~~ a whitish
patch. The pads of lower surface of
limbs are yellowish. The iris bronze.

No 2652 Snake greenish with black pattern

No. 2653. frog like No 2645

No. 2654 frog " " 2645

No. 2655 frog with pale yellowish dorsal stripe

No. 2656. 2657, 2658. 2659. 2660. 2661.

No 2662. Seven frogs.

No. 2663, 2664, 2665, 2666 four

Wrayan 2000 1914

spurious forest-toads

No 2667 a large tree toad.

No 2668 a smaller tree toad

No. 2669 treefrog, light brown above
black cheeks

2670 tree toad, small, dusky color
w/ darker markings, black
throat, & light ventral surface
much marked with dark pattern.

2671. ^{Xenopus} ~~Hymenochirus~~, small spec.

2672. frog, light brown in gen. col.

No 2673. 2674. 2675. 2676. 2677. 2678. 2679

2680. 2681. 2682. 2683. 2684. 2685. 2686

2687. 2688. 2689. 2690. eighteen frogs
found near the brook & in the
swamps with fresh water

2691. 2692 two frogs as above.

2693 & 2694 two tree toads

No. 2695. a yg turtle.

No. 2696 treefrog, light brown with
darker markings

No 2697 tree toad

No 2698, 2699. 2700. 2701 four small
spurious forest toads.

340 *Diaper* Jan 1914.

(a dull)
No. 2702 watersnake, killed water, dirty
Photo brownish above, a reddish streak
running from below the eyes
down the sides but become
less distinct towards base
of tails; ventral surface gray
black with gray border on posterior
edges. small eyes, reddish
brown iris, somewhat pupil
TL. 542 $\frac{1}{2}$ LT 101. mm. There are
larger spec. in the coll.

No. 2703. large forest toad 152 mm. long.

No. 2704, 2705, 2706, 2707, 2708, 2709
side (*Hymenochirus*) Xenopus

No. 2710. to 2809 large safety jar mT ^{about 40}
Hymenochirus *2792 = R11957 (water snake)

No. 2810. to 2829 ^{about} twenty (*Hymenochirus*) in
small bottles.

No. 2830. to 2845 ^{about} sixteen (*Hymenochirus*) Xenopus

No. 2846. to 2860 ^{about} fifteen (*Hymenochirus*) Xenopus

No. 2861. watersnake, glossy.

No. 2862. keepag.

No. 2863 small spring forest toad

Chapman Jan. 1914

No 2864 + many of the watersnake / keeled
scales R-11958

No 2865 + small bluegray snake with many
R12023 ^{irregular} irregular blackish transverse
stripes, iris light gray; lower side
bluegray with light gray spot-
edges. all scales above dotted
with minute light gray spots.

No. 2866 + watersnake. Keeled scales R11959

No 2867 small toad apuianus

No 2868. larger toad, rufous on sides of apuianus

No 2869. long slender snake, green & black

No 2870. grayish green snake, ventral surface yellow
(he swallowed a small frog)

Photo throat orange, dark greenish gray iris
tail with blue gray below

No 2871. small ^{hatched above} frog, dull milky white with a tinge
of pinkish or pale bluish, many round
blackish dots on upper body & forelimbs

Photo Pads thigh, lower surface of limbs jelly-
like ^{greenish} yellowish; throat chrome yellow,
iris golden. It often changes its color
from white to blue, to pink & to yellowish,
ventral surface smooth skin

Wedge Masher

2872

^{head} large fairly smooth surface
light brown ^{above including} with ^{dark red} ~~dark red~~
^(yellowish gray area)
~~edged finit line~~ from tip of

Photo
from
life

head above nostrils down
towards the base of hindlimbs

where it ends in a few

^{this grayish area edged along with a dark red line}
grayish green blotches. A dark
triangular wedge on back.

The head is darker than the sides
of body. Hindlimbs light
brown with indefinite grayish
^(bars) bands on light brown forelimbs
is just a trace of these bars.

ventral surface whitish granular
pinkish on lower surface of
limbs, pinkish ^{gray} on arms
on caucum and above arms a pale
yellowish line turning to pinkish
on edges. large golden bronze ^{bits}
with vertical purple

2873

Med. sized head dark brown
above with black blotches.

Photo

There are a great many white

milje marca 1914

102873 hipped protuberances on the
upper surface of body.
forelimbs dark fuscous or barred
like the toes ^{back} of base of forelimbs
a few golden yellow
blotches. At base of hindlimbs
a large yellow ^{mark} blotch the femur
banded with yellow, tibia
yellow & tarsus above a few
white blotches (like bars)
a few grayish white streaks across
toes. Throat smooth & black
peckled with white ventral surface
granulated dark gray flecked
with white. a few yellowish
markings on lower portion of
belly. Large dark brown iris
pupil vertically elongate

no 2874. Med. sized tree toad, smooth
Photo skin. med. brown above. gray
limbs, gray sides, yellow
thighs speckled with black & gray
whitish throat & anterior granular
ventral surface, post. ventr. surface
blotched with gray, brownish spots. golden upper

edge on finely veined grayish iris
vert. pupil. Dk. brown lower
surface of hind foot gray, white pads
prehensile externally edged with
fine yellow line with brown
edge.

2875 green viper had swallowed a
tiny mouse

2876. dark gray or green snake
elongate triangular head
^{lower side of head} ~~light chrome yellow on lower surface, also below~~
~~thin~~ ^{had} ~~seen~~ ^{had} swallowed
a large specimen of the forest toad
green.

2877 ^{capitulum & snout sides} (see 2877)
^{also dark gray, pupil vert. elong.}
forest toad, specimen like the
one swallowed by No 2876. (same
size)

2878. large frog

2879 large smooth tree toad

2880. Blindworm, above black brown
ventral surface medium
brown

2881 long tailed lizard, ^{with few dark spots} above brown
^{on upper} dark sides lighter on lower sides
scales yellowish on throat & breast & slight
tinge of same color on the whitish ventral

Medje March 1914

surface. lower side of tail whitish.
No 2882 frog, longlegged, 8 ridges
parallel., the outer ones golden, gen. col.
above (greenish brownish) with
Photo. a number of irregular dots.
sides of head greenish & bronze.
iris above pale golden below dark.
an iridescent white throat,
pale yellowish abdomen outer edge
border of lower jaw speckled white
& gray. pink about anus.
back of thigh dark brown with two
yellowish green irregular lines &
a few spots, front of thigh light
grayish green a few irregular darker
cross bars. calf above pale grayish
green a few dark spots on rearside
below grayish with the line
forming a white line. foot
grayish green above with dark
irregular markings, a faint
pale greenish line posteriorly yellowish
pink anteriorly lower side
of hind foot dark (brown), sides

grayish green with few dark spots;
forelimbs light brown above &
anteriorly pinkish posteriorly;
a few dark markings with a pale
yellowish line on the rear.

a triangular pale greenish spot
on ^{happens} tympanum

No 2883 small of the preceding species
has same color but a reddish
brown line from tip of head
down back. dark vocal
sacs. is somewhat yellower
on abdomen.

2884. also ♂ has light brown dorsals
& light vocal sacs.

No. 2885. dark blue gray glossy snake
small dark eyes, milky white

Photo (enamel) surface. short tail.
darker lower jaw (dirty pink)
TL. 740. LT. 40 mm

No 2886 Matsukata glossy. TL 176. LT. 26.
Skin & skull.

No. 2887 small treefrog, back upperside
Photo

Medzi March 18th 1887

2887 *Phox* dark brown, with indistinct markings
pauzed by light brown lines (one
visible when body fully extended,
of the skin is smooth) Sides
dark irregular blotches framed
in ^{pale} blue lines; sides of head
a black streak from nostril to
somewhat beyond the base of fore-
limb bordered below by a whitish
line. The Iris very dark but the
upper one third of bright golden
blue. Throat med. brown with
a few pale blue spots. abdomen
marbled with pale blue & dark
brown. front limbs med. brown
anteriorly with a few somewhat
indistinct bars. dark brown
with pale blue posteriorly. hind limbs
above med brown with irregular
light brown markings (bars)
below dark brown with pale
blue markings.

Caught by a native in the forests

Medge April 19/24.

- No. 2888 ✓ ^{glowy} lizard, above black with two parallel pale yellow stripes down to base of limbs ^{apex which they unite} ^{terminating at the tip} in pale blue ^(line) on crown ^{ridge shaped} ~~of head~~ pointed marking of pale yellow on either side. Two more yellowish lines ^{of head} towards base of hindlimbs. The ventral surface bright orange, the lower surface of feet yellowish. As the lower side of tail with dark bars ~~less~~ more pronounced towards bluish tip. Other side of tail is edged by a ^{yellowish} ~~yellowish~~ series of ^{yellowish} ~~spines~~ ^{spines}. ^{grayish pale} ~~grayish~~ green on lower side of forelimbs. The limbs above black ~~dark~~ well edged with pale yellowish. Scales of body yellowish green. (One could also say the color above is pale yellowish with seven black parallel lines). TL. 118 mm.
- No. 2889 ^{dull} lizard, dark brown above with ^{Photo} irregular yellowish small spotting forming a line on each side.

2889. ventral surface glossy white
with slight greenish tinge. Tail
on sides & above spotted with
Photo an indefinite yellowish tinge.
sides above dark brown stripe
bordered by yellowish irregular
line & below it a ^{finely} mottled area
in brown, yellow & white & green

No. 2890. keel hard, a dark ^{on sides of head} brown, a broad
Photo light brown band towards tail
with a few dark scales & edged by a few
yellow ones, a broad dark brown
lateral band, with a few scales of a
yellow tinge towards the lower ^{edge} edge
gray throat ^{sometimes} bluish sternum, light
green ventral surface & greenish
lower side of tail

No. 2891. small gecko, light (greenish) gray
mottled with dark & blackish spots
Photo 2 black triangular pattern on pale
gray throat, light brown sides
& edges of ventral surface. Ref.
bears a lead red broad stripe to
tip of tail.

Nedje April 1914

- 2892 small frog, light brown with darker head, a few dark bars on limbs. a light yellow narrow stripe from tip of head to the anus. a dark marking from tip of head across eyes to nearly base of forelimbs. a dark ^{gray} throat mottled with white, on breast darker mottled, a whitest line down the middle of the throat. usually has no ^{dorsal} stripe but occurs in light & dark brown suffused & nearly black. the pattern of the throat is persistent.
- No 2893. ^{dull} reddish brown small snake with dark brown iris & slight fine yellowish ring about the nearly round pupil; lower sides suffused. ventral surface greenish ^{of lower & lower edge of tail brown.} throat bluish white, interstices between scales dark blue gray, with a bright blue conspicuous ^{but slight depression} marking.
- No 2894. lizard, above dark greenish

Medzi April 1914

- 2894 brown, with indistinct dark markings. lower sides yellowish green, lower jaw & ventral surface pale bluish green; throat yellow, lower side of tail darker green than ventral surface.
2895. small ~~frog~~ tree toad, above pale greenish with grayish tinge ^{towards} sides which are marked by a few yellow irregular markings, not to be seen when squatted. The pads of toes & lower surface a bright red color (also lower surface of limbs); dark bronze iris.
2896. small tree toad yellowish on crown, neck, sides and a well marked spot on lower end of thigh; medium brown on back with a black marking on pelvis. gray throat with fine white spotting, dark brown ventral surface with many roundest white spots & large of whitish area on abdomen. The brow color & white spotting extends to thighs but fades away towards anus. The foot pads are purplish.

Medu April 1914

2896. above the limbs are grayish green
dark bronze iris. The sides of
head dark brown, this color reaches
down the sides of forearm. with top
of the ventral surface

2897. pale greenish freetoad / very small
with light bronze iris, 9 whitish
markings (looks like oil color
painted on) from tip of head
reaching to across the eyes of a
stripe from ^{of same color} behind the eyes
down to base of hindlimbs
lower surface of feet with
pale yellowish tinge, a pale
greenish throat, ^{pale} bluish green
ventral surface which color reaches
up the sides

2898. a gecko, small slender. (has a swelling
ventral surface. ^{underside of tail pin high with gray tip} ^{behind anus})
med. gray above with tiny
light markings of light brown
dorsal markings forming a
series of ^{rounded} indistinct sometimes
in front of ^{triangular} markings
of which 6 are on the tail & 8 on

Medx April 1914

2898 The head the two anterior being
indistinct. Has no footpads. TL 80 mm
IT 44 mm

2899. Very slender forest lizard.

2900? TL 115. IT (probably lack one or two
dm) 71 mm. Color ♂, to 2900 unspotted

new
species
labeled
3006
//
dark greenish grey crown, brown
(fairly dark) back, with a number
of dusky lighter brown also some
yellowish markings, pale brownish
yellow tail with numerous tiny
black spots, a dark line from
side of head down to above base
of hindlimbs, a greyish breast
a slightly lighter, pale yellowish
glossy ventral surface, same
color but with tinge of green
on lower surface of limbs,
lower surface of tail pale
yellowish, there are a few tiny
black spots from behind the
forelimbs down towards the
anus where they become more
numerous, as they are on the tail

Medje April 1914

2901. 2902. 2903. 2904. 2905.
2906. 2907. 2908. 2909. 2910.
2911. 2912. 2913. 2914. 2915.
2916. 2917. 2918. 2919. *Minckley*
large forest lizards.

No. 2920. Horned viper - Skin &
skull salted

No. 2921. 2922. 2923. 2924. 2925
2926. 2927. 2928. eight green
vipers. the latter shows a fairly
yellowish underside also the
yellowish markings on the ^{underside} edge of ventral
lateral scales

No. 2929. large grayish brown cobra, had
R1224 swallowed a yg plantain
(87-148) cater (the large blue species)

No 2930. 2931. 2932. 2933. 2934.
2935. red snake with black stripes.
adult 21 yg

No (R12134) 2936. (R12135) 2937. (R12136) 2938. (R12137) 2939. (R12138) 2940. 2941.
(R12139) 2942. (R12140) 2943. (R12141) 2944. (R12142) 2945. ten green
tree lizards, keeled scales.

No 2946. 2947. 2948. kee green tree lizards
smooth scales R12107-12109 (87.67)

Medzi April 1914

2949. 2950. 2951. 2952. 2953. 2954

2955. seven greenish vipers with
dark triangular & barred markings
an ^{yellowish} fine line forming an arrow-shaped
pattern at base of head.

2956. large Blindwormlike snake
brown mottled with ^{pale} buff.

2957. 2958. 2959. three flattened lat.

2960-78 compressed snakes, brownish
(07-148) pink is ~~the~~ usually the predominant
color but among those three
is considerable variety.

2960. 2961. 2962. 2963. 2964

R12004
12006 five dark bluish gray snake
with an irregularly defined
whitish ventral surface, tail
dark throughout

2965. 2966. 2967. 2968. 2969. 2970.

Old snakes, dark grayish green
with slightly broadened head
yellowish underside, but
tail dark throughout. In 2968
had swallowed ^{a large specimen of} the reddish
spring forest toad.

Medje April 1914

2971. 2972. 2973. 2974 four
snakes, gen. col. ~~dark~~ glossy dark bluish
gray with a yellowish patch on head
& neck, short tail, ventral surface
whitish throughout

2975. viper(?) & dark blue gray above
ventral surface lighter

2976. 2977. 2978. three blindworms

2979. 2980 two watersnakes, reeled
scales. ^{2980 - R 1192}
^{2979 - R 11960}

2981. 2982. 2983. 2984. 2985. 2986

2987. 2988. 2989. 2990. 2991. 2992

2992. 2993. 2994. 2995 sixteen

chameleons of different species.
one with three horns

2996. 2997. 2998. 2999. 3000 ³⁰⁰¹ five
specimens of a dark blue gray snake
just like no. 2971. but the marking
on the head is less conspicuous
& the lower surface of the tail
is slightly freckled with dark gray

3002. 3003. 3004. 3005. four of the large
lizards. ♂ The body is bright
blue the head & neck yellowish

Mudge April 1914

3006^x 3007^x two greenish brown snakes
R12190-91 with darker transverse pattern
(07-123) & dark markings on head.

3008. 3009. two ~~green~~ dark greenish
R12065-66 snakes with dark transverse
(07-66) pattern, lower side anteriorly
whitish posteriorly greenish

3010^x light brown snake with whitish
R12039 & yellowish lower side (07-46)

3011. a large pond frog

3012. large common toad

3013^x ^{snake} dark blue gray with gray blue
R12024 ventral surface.
(07-45)

3014. 3015. dark gray blue snake, whitish
ventral surface mottled with dark
gray, lower surface of tail dark gray

~~3015~~ 3016. 3017. ³⁰⁰⁸ three snakes, dark
R11913-15 gray blue with whitish ventral
surface, one spec. with much
longer tail

3019 ~~3020~~ yellow snake, dark blue gray
whitish ventral surface, spaced
head

Medzi April 1914.

3020. + egg gray blue snake with ^{numerous} dark transverse markings.
R 12025 (07-45)

3021. 3022 3023 3024 3025. 3026

3027 seven toads, spirions, rufous sides, velvety black markings on back.

3028. 3029 two Common treefrogs

3030. 3031. 3032. tree frogs with parallel dorsal ridges.

3033. 3034 two large ^{large} green treefrogs, probably same as those in next series.

3035. 3036 3037. 3038, ^{3039, 3040, 3041, 3042} ~~large~~ large treefrogs. light & dark brown & green

3043 3044 3045 tree treefrogs, light & dark brown, there are a few light markings, right middle eye one on top of head & one between

3046. 3047. 3048. tree treefrogs, a large dark marking on back & a few minor ones & a large marking from top of head

Mede April

downward to sides, skin smooth.

3049, 3050 3051. Three large tree toads
fairly warty skin, especially
on head & sides (look, coarser
in life than on pickled spec)
many dark markings above

3052 3053. 3054. 3055 four of the
smaller spinos forest toads
No. 3056 tiny chamelion short tail
see photo usually light or dark brown.
It often become light grayish
white, also greenish brown.
the dark cross marking remain
unchanged

No 3057 a large dull green lizard (402 mm

No 3058. (long) with darker ^{green} head. the scales of
which have dark markings. the sides
of head somewhat lighter, the ventral
surface bluish green, below
on the neck there is a sort of collar
of large scales followed by a series of smaller ones that
are dividing neck & breast where large
scales again begin

see photograph. from life.

It would readily jump down from a tree
but otherwise was rather sluggish.

Madagascar April 1914

its movements brought for a
 yard or so it might sometimes
 proceed fairly rapidly. It ~~usually~~
 made for cover & tried to hide
 itself underneath leaves &
 also under a log. The natives
 who caught it assured me that
 they had taken it on a tree trunk
 near the water. I sent them
 off again & they brought me
 No 3058. I also have No.

No 3059

The scales on the upper side (excluding
 those of the crown of head) are ridged
 in a very peculiar manner which
 gives it a rather rough look.

No 3059.

see photo

appendix.

a bright green lizard with
 tiny smooth scales on body
 but rough ridged scales from
 base of tail on $1\frac{1}{2}$ cm beyond
 the ^{trunk} ~~fourth~~ section (on the upper
 portion of tail only) about ~~the~~
 3 cm long where the scales
 are really spinous & which gives

Medj April 1914

is a peculiar look. The crown is
3059. darker, the ventral surface light
green, a few ^{of the large} scales on lower
jaw grayish green, a few ^{of the} ~~outer~~ ^{of the} scales of the large scales on the
lower side of the neck are orange,
as well as the two rows of large
~~external~~ scales bordering the sides
though those near the breast only
gradually take the orange tint
T.L. 285 mm. LT. 185 mm.

No. 3060. same as above, but spoiled
by an arrowshot, his eye
showed orange on the two posterior
large scales on lower jaw, on the large scales
of lower nuchal collar & on the larger scales
on the breast, but not on the sides like
the preceding spec.

No 3061 (med) grass green or dark green big
forest tree toad, large bronze iris
see Photo with vent. pap. a pale yellowish edge
from life on upper lip a yellowish line
separating the brown area about

Nedje April 1914

3061

arms & lower ^{brown} surface of limbs,
finely granulated skin above
large granulation on ventral
surface which is white with
a brown markings; a brown lower
lip, ^{pale} yellowish line on edges of toes
& ~~some~~ the inner foot pads yellowish
brown the outer ones completely
brown. I believed it was identical
with a somewhat smaller species
(see cat by 2640)
that has cross bars faintly visible
on back, but I have never seen
it change color of those I had
for some time alive. Sittling
flat it measures 77 mm in
length (from tip of head to arms)
The sides are lighter green.

3062

chameleon, dark brown, mid brown
light green & dark green the large ^{compd} papillae
on the upper side towards back
are pale bluish or some greenish brown
some of the papillae in the depression the crown
are pale bluish, some & those on

Photo

Med. April 1914

The side of head bright yellowish green. Its chief defence when perched on a stick is to let quickly loose its grip & drop out of sight, this may protect it probably from some of the monkeys.

It never turns all over the body one color, not only most of the large papillae deep brick blue or greenish brown color, but there are always a number of dark markings, as across the body two or rather 3 indefinite & a number on top & across the tail.

No. 3063 small tree toad, light or dark green above, sides yellowish

Photo. a dark streak in front of eye & back of it, a few small black markings on side of head ^{forelimbs} dark edges on the sides dividing the yellowish ^{col. of sides} creamy tint of the abdomen, one bright red marking in front & one behind the thigh

Length
in hind
flatt
30 mm
long.

Medge May 1914

light gray. Sides grayish, a line
of whitish ^{pointed} tubercles on sides ^{of} four
lines of pointed on base of tail but
from here somewhat irregularly
distributed towards tip, the sides of
tail fringed by densely set line of
pointed tubercles. The tip of tail has
evidently been injured, it is dark.

No 3667. a rather slender tree toad. covered
with numerous small tubercles
see ^{the smaller ones look like sand which}
photograph on upper surface of body I think
the gen. col. at a distance
is a mixture of brown tints.
The ^{middle} ~~central~~ portions of the
back, the upper surface of hind limbs
on account of their cross
pattern appear dark grayish
on account of the ^{dark} markings being
more prevalent on Rose portions of the
body; ^{near} the base of hind limbs
across the shoulder, running down
the sides to base of hind limbs
the pale yellowish brown tints are
more ^{prevalent}; the throat is whitish

Medye May 1914

3067 The ventral surface yellowish, also
a spot below the anus. The lower
surface of the pads $\frac{3}{4}$ of the thigh
all the portions ^{of the hindlimbs} not visible from above
in a squatting position, & streak
from base of hindlimbs running
up the side, a small area on the
inner side of the forelimbs have a
blue green smooth jelly like look.
Very ^{conspicuous} are the large
pale yellowish finely veined eyes
with a darker marking in front
& on the rear of the horizontally
elongate pupil. On the ground
they hardly jump more than
3 feet, but when raised on
top of a stick they really
take downward jumps with
surprising ease undoubtedly
aided by the enormous flipper-
like extension of the hindlimbs.
The spec. photographed measures in
a sitting position 56 mm in length

(The markings on this female (No 3068) are also conspicuous especially the darker ones, some of them are dark brown (TL 7 2 mm) on the feet & crown & on the feet a few are black)

No 3068. We received a specially large one that appeared rather fat, I put it in a little box & I was amazed when I looked ^{in the evening} inside in the box

May 28. I saw it sitting upon a large patch (60 mm wide & on the 45 mm high) of a mass that looked exactly like the beaten white of egg, having

The substance ~~exactly~~ the same consistency ^{looking or feeling jelly like}

comes out on pressure from the anus like a colorless transparent jelly like substance but can not be rubbed with the hand in as fluffy a substance as the one made by the frog through its rubbing it becomes at once foamy

evidently had worked it with its hindlimbs that were still covered with the whitish substance that was passed to one of the ends of the box being largest at the base. The next morning he had left the patch.

I will keep the box moist to see further developments (was destroyed.)

Received some others on June 12 &

June 17. The former put on the stem of a tree, the latter on a large leaved tree; there was one on the front & one on the backside of the leaf.

368
Mudge May 1914

No. 3069. Large keelheads 'same as No 2640'

color
marked
from spec.
above.

No. 3069 light brown above, indistinct markings

No. 3070 dull greenish brown, many small black spots

No. 3071. bright grass green, indistinct markings

No. 3072 grayish green, distinct dark markings pale yellowish

No. 3073 dark brown, indistinct ^{dark} markings

No. 3074. red brown, distinct ^{dark} markings.

3075 dark brown, no markings, sides light brown

3076 light brown, dark markings,
all of them have ^{strong} yellowish tint on lower
surface of limbs.

No. 3077. slender lizard TL. 124 mm LT. 78 mm

Phos
offica
leaks
the back brown, with many dark markings
lighter towards base of tail which has many
black dots; a black stripe from behind eyes
to down of base of hindlimbs, whitish lower
jaw & neck, greenish white abdomen yellowish
black dotted lower surface of tail with grayish tip, dark
lower surface of feet.

No. 3078. 3079. 3080. Three large keelheads
bright green above, no markings, no
yellow ^{light} markings on hindlimbs.
They seem not to change. Ken color,
except from bright to dull green.

nothing
last year
being
down
with
at

is



LANG - CHAVIN

1911-1914

BELGIAN CONGO