

American Museum Novitates

PUBLISHED BY THE AMERICAN MUSEUM OF NATURAL HISTORY
CENTRAL PARK WEST AT 79TH STREET, NEW YORK 24, N.Y.

NUMBER 2192

SEPTEMBER 10, 1964

A New Chameleon from the Congo

By GASTON F. DE WITTE¹

Among the African reptiles that I examined at the American Museum of Natural History in 1963, I discovered three specimens of *Chamaeleo* from Lukolela, former Belgian Congo, that represent a species previously unrecognized. The three individuals were collected more than 30 years ago by my friend the late Dr. James P. Chapin. It is with great pleasure, therefore, that I name this species for a man who has contributed so much to our knowledge of the Congo fauna, particularly the avifauna, and I deeply regret that Dr. Chapin did not live to see this paper in print. This chameleon is to be called:

Chamaeleo chapini, new species

HOLOTYPE: A.M.N.H. No. 45885, an adult female taken near Lukolela, in the Territory of Bikoro, Equator District of the Province of Equator, Congo (former Belgian Congo), by James P. Chapin on January 16, 1931.

PARATYPES: A.M.N.H. No. 45884, a juvenile male paratype collected on November 13, 1930, and A.M.N.H. No. 47358, a female paratype collected in February, 1931.

DIAGNOSIS: *Chamaeleo chapini* seems to be most closely related to *Chamaeleo adolfifriederici* Sternfeld (1912), a small species known from few specimens, all taken in the eastern portion of the Congo (Districts of Kibali-Ituri, Nord Kivu, Sud Kivu, and Rwanda). *Chamaeleo chapini*

¹ Honorary Keeper of the Institut Royal des Sciences Naturelles de Belgique, Brussels.

(fig. 1), however, lacks the parietal and dorsal crests, as well as the conical scales on the lateral crests, that are characteristic of *C. adolfifrigerici*. The tail of *C. chapini* is proportionately somewhat shorter, for it comprises slightly less than half of the over-all length, in contrast to 0.53 to 0.57 reported by Schmidt (1919) for *C. adolfifrigerici*.

DESCRIPTION OF HOLOTYPE: The preserved specimen, an adult female, has a body length of 80 mm., and a tail length of 71 mm., which comprises 47 per cent of the over-all length of 151 mm. The distance from

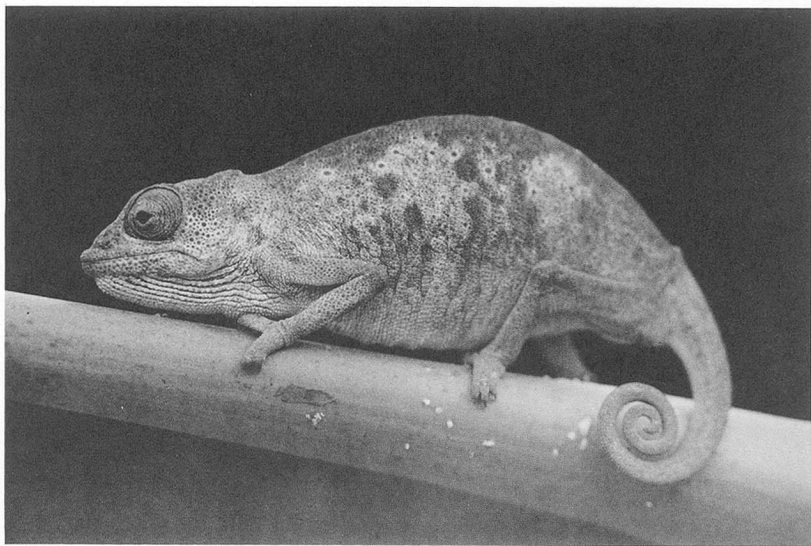


FIG. 1. Holotype specimen of *Chamaeleo chapini*, A.M.N.H. No. 45885. Photograph by James P. Chapin. Natural size.

the top of the head to the under side of the lower jaw is 14 mm.; from the snout to the posterior end of the mandible, 15 mm.; from the snout to the extremity of the casque, 22 mm. The greatest width of the head between the lateral crests is 8 mm.; the head width below the lateral crests is 12 mm.; the length of the tibia is 15 mm.

The casque is very feebly elevated posteriorly, and there is no parietal crest. The distance between the commissure of the mouth and the extremity of the casque is shorter than the length of the mouth. There are no rostral appendages. The scales on the lateral crests are feebly enlarged, and the crests converge, uniting at the occiput. There is no trace of occipital lobes. The junction of the canthal ridges is separated from the

labials by four or five scales. The head is covered by large flat scales, 11 of which may be counted across the interorbital space when the crests are included.

The scales on the body are granular, weakly heterogeneous, and intermixed with large flat tubercles. Many shallow grooves are present on the throat. The granules on the vertebral line form two series. There are no dorsal, gular, or ventral crests, and there is no tarsal process.

In alcohol the color is brownish, but James P. Chapin's notes indicate that in life the general color of the male was dark gray, with a few oblique, blackish bars, and a faint tinge of rufous in the light areas of the body.

VARIATIONS IN PARATYPES: The paratypes, a juvenile male and an adult female, are, respectively: 91 and 148 mm. in over-all length; body length, 49 and 75 mm.; tail length, 42 and 71 mm.; from snout to posterior end of mandible, 10 and 16 mm.; from snout to extremity of the casque, 14 and 21.5 mm.; width of head at level of lateral crests, 5 and 7 mm.; width of head below lateral crests, 8 and 11 mm.; height of head, 9 and 12 mm.; tibia length, 10 and 14 mm. The ratio of tail to total length is 0.46 for the male, 0.48 for the female.

LITERATURE CITED

SCHMIDT, KARL P.

1919. Contributions to the herpetology of the Belgian Congo based on the collection of the American Museum Congo Expedition, 1909-1915. Part I. Turtles, crocodiles, lizards, and chameleons. With field notes by Herbert Lang and James P. Chapin. Bull. Amer. Mus. Nat. Hist., vol. 39, pp. 385-624, figs. 1-27, pls. 7-32, maps 1-22.

STERNFELD, R.

1912. Reptilia. In Friedrich, Adolf, Wissenschaftliche Ergebnisse der Deutschen Zentral-Afrika-Expedition 1907-1908. Leipzig, vol. 4, pp. 197-279, 4 pls.