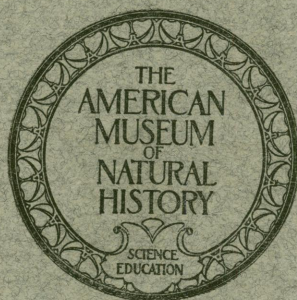


BULLETIN
OF
THE AMERICAN MUSEUM
OF NATURAL HISTORY

VOLUME XLVIII, 1923



NEW YORK
PUBLISHED BY ORDER OF THE TRUSTEES
1923

BULLETIN
OF
THE AMERICAN MUSEUM
OF NATURAL HISTORY

VOLUME XLVIII, 1923



NEW YORK
PUBLISHED BY ORDER OF THE TRUSTEES
1923

EDITED BY FRANK E. LUTZ

THE AMERICAN MUSEUM OF NATURAL HISTORY
SEVENTY-SEVENTH STREET AND CENTRAL PARK WEST
NEW YORK CITY

BOARD OF TRUSTEES

(As of December 31, 1923)

PRESIDENT

HENRY FAIRFIELD OSBORN

FIRST VICE-PRESIDENT

CLEVELAND H. DODGE

TREASURER

GEORGE F. BAKER, Jr.

SECOND VICE-PRESIDENT

J. P. MORGAN

SECRETARY

PERCY R. PYNE

EX-OFFICIO

THE MAYOR OF THE CITY OF NEW YORK
THE COMPTROLLER OF THE CITY OF NEW YORK
THE PRESIDENT OF THE DEPARTMENT OF PARKS

ELECTIVE

GEORGE F. BAKER
FREDERICK F. BREWSTER
FREDERICK TRUBEE DAVISON
CLEVELAND EARL DODGE
WALTER DOUGLAS
CHILDS FRICK
MADISON GRANT
WILLIAM AVERELL HARRIMAN
ARCHER M. HUNTINGTON

ADRIAN ISELIN
ARTHUR CURTISS JAMES
WALTER B. JAMES
OGDEN MILLS
A. PERRY OSBORN
GEORGE D. PRATT
THEODORE ROOSEVELT
LEONARD C. SANFORD
JOHN B. TREVOR

FELIX M. WARBURG

ADMINISTRATIVE OFFICERS

(As of December 31, 1923)

DIRECTOR

FREDERIC A. LUCAS

EXECUTIVE SECRETARY

GEORGE H. SHERWOOD

ASSISTANT TREASURER

THE UNITED STATES TRUST COMPANY OF NEW YORK

SCIENTIFIC STAFF

(As of December 31, 1923)

FREDERIC A. LUCAS, ScD., Director
ROBERT C. MURPHY, D.Sc., Assistant to the Director (in Scientific Correspondence,
Exhibition, and Labeling)
JAMES L. CLARK, Assistant to the Director (in Full Charge of Preparation)

DIVISION OF MINERALOGY AND GEOLOGY

W. D. MATTHEW, F.R.S., Curator-in-Chief

GEOLOGY AND INVERTEBRATE PALÆONTOLOGY

EDMUND OTIS HOVEY, Ph.D., Curator
CHESTER A. REEDS, Ph.D., Associate Curator of Invertebrate Palæontology
CHARLES P. BERKEY, Ph.D., Research Associate in Geology

MINERALOGY

HERBERT P. WHITLOCK, C.E., Curator
GEORGE F. KUNZ, Ph.D., Research Associate, Gems

VERTEBRATE PALÆONTOLOGY

HENRY FAIRFIELD OSBORN, LL.D., D.Sc., Honorary Curator
W. D. MATTHEW, Ph.D., Curator
WALTER GRANGER, Associate Curator in Fossil Mammals
BARNUM BROWN, A.B., Associate Curator of Fossil Reptiles
CHARLES C. MOOK, Ph.D., Associate Curator
WILLIAM K. GREGORY, Ph.D., Associate in Palæontology
CHILDS FRICK, B.S., Research Associate in Palæontology

DIVISION OF ZOÖLOGY AND ZOÖGEOGRAPHY

FRANK MICHLER CHAPMAN, N.A.S., Curator-in-Chief

LOWER INVERTEBRATES

ROY W. MINER, A.B., Curator
WILLARD G. VAN NAME, Ph.D., Assistant Curator
FRANK J. MYERS, Research Associate, Rotifera
HORACE W. STUNKARD, Ph.D., Research Associate, Parasitology
A. L. TREADWELL, Ph.D., Research Associate, Annulata

ENTOMOLOGY

FRANK E. LUTZ, Ph.D., Curator
A. J. MUTCHLER, Assistant Curator in Coleoptera
FRANK E. WATSON, B.S., Assistant in Lepidoptera
CHARLES W. LENG, B.S., Research Associate, Coleoptera
HERBERT F. SCHWARZ, A.M., Research Associate, Hymenoptera
WILLIAM M. WHEELER, Ph.D., Research Associate, Social Insects

Scientific Staff

v

ICHTHYOLOGY

BASHFORD DEAN, Ph.D., Honorary Curator
JOHN T. NICHOLS, A.B., Associate Curator of Recent Fishes
E. W. GUDGER, Ph.D., Associate in Ichthyology

HERPETOLOGY

G. K. NOBLE, A.M., Associate Curator (In Charge)
ARTHUR ORTENBURGER, M.S., Assistant Curator

ORNITHOLOGY

FRANK M. CHAPMAN, Sc.D., Curator
W. DEW. MILLER, Associate Curator
ROBERT CUSHMAN MURPHY, D.Sc., Associate Curator of Marine Birds
JAMES P. CHAPIN, A.M., Assistant Curator, Birds of the Eastern Hemisphere
LUDLOW GRISCOM, A.M., Assistant Curator
JONATHAN DWIGHT, M.D., Research Associate in North American Ornithology
MRS. ELSIE M. B. NAUMBURG, Research Assistant

MAMMALOLOGY

ROY C. ANDREWS, A.M., Associate Curator of Mammals of the Eastern Hemisphere
H. E. ANTHONY, A.M., Associate Curator of Mammals of the Western Hemisphere
HERBERT LANG, Assistant Curator, African Mammals
CARL E. AKELEY, Associate in Mammalogy

COMPARATIVE ANATOMY

WILLIAM K. GREGORY, Ph.D., Curator
S. H. CHUBB, Assistant Curator
J. HOWARD MCGREGOR, Ph.D., Research Associate in Human Anatomy

DIVISION OF ANTHROPOLOGY

CLARK WISSLER, Ph.D., Curator-in-Chief

ANTHROPOLOGY

CLARK WISSLER, Ph.D., Curator
PLINY E. GODDARD, Ph.D., Curator in Ethnology
N. C. NELSON, M. L., Associate Curator of Archæology
CHARLES W. MEAD, Assistant Curator of Peruvian Archæology
LOUIS R. SULLIVAN, Ph.D., Assistant Curator, Physical Anthropology
CLARENCE L. HAY, A.M., Research Associate in Mexican and Central American Archæology
MILO HELLMAN, D.D.S., Research Associate in Physical Anthropology

COMPARATIVE PHYSIOLOGY

RALPH W. TOWER, Ph.D., Curator

Scientific Staff

COMPARATIVE ANATOMY

WILLIAM K. GREGORY, Ph.D., Curator

J. HOWARD MCGREGOR, Ph.D., Research Associate in Human Anatomy

DIVISION OF EDUCATION, BOOKS, PUBLICATION, AND PRINTING

GEORGE H. SHERWOOD, A.M., Curator-in-Chief

LIBRARY AND PUBLICATIONS

RALPH W. TOWER, Ph.D., Curator

IDA RICHARDSON HOOD, A.B., Assistant Librarian

PUBLIC EDUCATION

GEORGE H. SHERWOOD, A.M., Curator

G. CLYDE FISHER, Ph.D., Associate Curator

GRACE FISHER RAMSEY, Assistant Curator

PUBLIC HEALTH

CHARLES-EDWARD AMORY WINSLOW, D.P.H., Honorary Curator

MARY GREIG, Assistant

CONTENTS OF VOLUME XLVIII

	PAGE
Title-page.....	i
Officers and Trustees.....	iii
Scientific Staff.....	iv
Contents.....	vii
Dates of Publication of Separates.....	viii
List of Illustrations.....	ix
List of New Taxonomic Names.....	xiv
Errata.....	xv
Art. I.—Birds Collected in Lower California. By Charles Haskins Townsend. (Plate I, three text figures).....	1
II.—The Distribution of the Motmots of the Genus <i>Momotus</i> . By Frank M. Chapman. (Four text figures).....	27
III.—Some Skulls of <i>Perchaerus</i> [<i>Thinohyus</i>] from the White River and John Day Formations. By Helga S. Pearson. (Seventeen text figures).....	61
IV.—A Contribution to the Knowledge of <i>Mærittherium</i> . By H. Matsumoto. (Eleven text figures).....	97
V.—The Ilium of Dinosaurs and Birds. By Alfred S. Romer. (Two text figures).....	141
VI.—Echinoderms from Lower California, with Descriptions of New Species: Supplementary Report. By Hubert Lyman Clark.	147
VII.—Studies on North American Blood Flukes. By Horace W. Stunkard. (Plates II–XIII).....	165
VIII.—A Jurassic Fish Fauna from Western Cuba, with an Arrangement of the Families of Holostean Ganoid Fishes. By Wm. K. Gregory. (Six text figures).....	223
IX.—Mutation Among Birds in the Genus <i>Buarremon</i> . By Frank M. Chapman. (Plates XIV–XVII, three text figures).....	243
X.—The Carpus of <i>Eryops</i> and the Structure of the Primitive Chiropterygium. By Wm. K. Gregory, R. W. Miner, and G. K. Noble. (Four text figures).....	279
XI.—Classification of the Lizards. By Charles Lewis Camp. (One hundred and twelve text figures).....	289
XII.—Avian Fossils from the Miocene and Pliocene of Nebraska. By Alexander Wetmore. (Twenty text figures).....	483
XIII.—Further Notes on the Molars of <i>Hesperopithecus</i> and of <i>Pithecanthropus</i> . By Wm. K. Gregory and Milo Hellman. (Fifteen text figures).....	509
XIV.—The Scales of the Cyprinid Genus <i>Barilius</i> . By T. D. A. Cockerell. (Plate XVIII).....	531
XV.—Crocodilian Pelvic Muscles and their Avian and Reptilian Homologues. By Alfred S. Romer. (Plates XIX–XXV).....	533
XVI.—Skull Characters of <i>Alligator sinense</i> Fauvel. By Charles C. Mook. (Two text figures).....	553

	PAGE
XVII.—New Fossil Mammals from the Pliocene of Sze-Chuan, China. By W. D. Matthew and Walter Granger. (Twenty-seven text figures).....	563
XVIII.—The Problem of the <i>Uintatherium</i> Molars. By Horace Elmer Wood, 2d. (Four text figures).....	599
XIX.—The Pelvic Musculature of Saurischian Dinosaurs. By Alfred S. Romer. (Eight text figures).....	605
XX.—The Brachyuran Crabs Collected by the U. S. Fisheries Steamer 'Albatross' in 1911, Chiefly on the West Coast of Mexico. By Mary J. Rathbun. (Plates XXVI-XXXVI, seven text figures).....	619

DATES OF PUBLICATION OF SEPARATES

The edition of separates is 300 copies, of which about 100 are mailed on the date of issue, and the others placed on sale in the Library.

Art. I, March 9, 1923.	Art. XI, Nov. 30, 1923.
" II, " 15, 1923.	" XII, Dec. 3, 1923.
" III, Sept. 19, 1923.	" XIII, " 4, 1923.
" IV, " 21, 1923.	" XIV, " 5, 1923.
" V, " 21, 1923.	" XV, " 6, 1923.
" VI, Oct. 5, 1923.	" XVI, " 7, 1923.
" VII, " 8, 1923.	" XVII, " 10, 1923.
" VIII, " 11, 1923.	" XVIII, " 11, 1923.
" IX, " 15, 1923.	" XIX, " 20, 1923.
" X, " 17, 1923.	" XX, " 28, 1923.

LIST OF ILLUSTRATIONS

PLATES

- I.—*Pipilo fuscus jamesi* Townsend. (Colored.)
- II.—*Spirorchis innominata*, *Spirorchis elegans*: ventral views of whole mounts.
- III.—*Spirorchis scripta*, *Spirorchis picta*: whole mounts.
- IV.—*Spirorchis artericola*: specimens from mesenteric arteries of *Chrysemys picta* and *Pseudemys scripta*.
- V.—*Spirorchis artericola*: frontal, sagittal, and cross-sections.
- VI.—*Spirorchis artericola*: cross-sections.
- VII.—*Spirorchis artericola* contained in cross-sections of a mesenteric artery of *Chrysemys picta*.
- VIII.—*Spirorchis artericola*: series of figures showing stages of development and structure of the miracidium.
- IX.—*Henotosoma hæmatobium*: ventral and dorsal views.
- X.—*Henotosoma hæmatobium*: cross-sections.
- XI.—*Hæmatotrema parvum*: whole mount, sagittal and frontal sections, and reconstruction of the reproductive organs.
- XII.—*Hapalorhynchus gracilis*: whole mount, sagittal sections, and egg from the feces of *Chelydra serpentina*.
- XIII.—*Hapalorhynchus gracilis*: cross-sections.
- XIV.—*Buarremon brunneinuchus* and *Buarremon inornatus*: mutation.
- XV.—*Buarremon assimilis* and *Buarremon poliophrys*: mutation.
- XVI.—*Buarremon torquatus* and *Buarremon fimbriatus*: mutation.
- XVII.—*Pipilo torquatus torquatus*, *Buarremon brunneinuchus*, *Buarremon torquatus*, and *Buarremon fimbriatus*: variations in the superciliary.
- XVIII.—*Barilius neavii*, *Barilius engrauloides*, *Barilius* (*Anabarilius*) *polylepis*, *Barilius* (*Anabarilius*) *andersoni*, *Neobola argentea*, and *Engraulicypris sordella*: parts of sides of scales showing relation of circuli.
- XIX–XXV.—Pelvic musculature of Crocodilia.
- XXVI.—*Pliosoma parvifrons*: dorsal and ventral views.
- XXVII.—*Pilumnus spinohirsutus*: dorsal and ventral views of female.
- XXVIII.—*Pilumnus townsendi*: dorsal and ventral views of female.
- XXIX.—*Pinnotheres jamesi*: dorsal and ventral views.
- XXX.—*Pinnotheres pichilinquai*: dorsal and ventral views of male.
- XXXI.—*Goetice americanus*: dorsal and ventral views of male.
- XXXII.—*Sesarma* (*Holometopus*) *magdalenense*: dorsal, ventral, and anterior views of male.
- XXXIII.—*Dromidia larraburei*: megalops and left cheliped.
- XXXIV.—*Pachygrapsus crassipes* and *Sesarma magdalensis*: megalops and left cheliped.
- XXXV.—Grapsoid: megalops and chelipeds.
- XXXVI.—*Libinia setosa*, *Pliosoma*, *Callinectes*, and a Portunid: megalops.

TEXT FIGURES

	PAGE
The 'Albatross' at San Josef Island, Gulf of California	4
Nesting place of <i>Sula brewsteri</i> on San Pedro Martir Island, Gulf of California	7

	PAGE
Boobies on the 'Albatross' in the Gulf of California.....	7
Map of Lower California, showing route of the Albatross Expedition.....	26
Map showing the distribution of the <i>Momotus lessoni</i> group.....	32
Map showing the distribution of the <i>Momotus subrufescens</i> group.....	36
Map showing the distribution of the <i>Momotus momota</i> group.....	40
Map showing the distribution of <i>Baryphthengus</i>	49
<i>Helohyus</i> : basis cranii.....	63
<i>Leptomeryx evansi</i> : basis cranii.....	64
<i>Perchærus</i> species.....	65
<i>Perchærus</i> : occiput as reconstructed from the young White River skulls.....	67
<i>Perchærus pristinus</i> : orbit as seen from without and behind.....	69
Reconstruction of the young White River skulls.....	84
Young John Day skull.....	85
Young John Day skulls.....	86
<i>Perchærus pristinus</i> and <i>Perchærus rostratus</i> : skulls.....	87
<i>Perchærus pristinus</i> and <i>Perchærus rostratus</i> : skulls.....	88
<i>Perchærus trichænus</i> : partly restored jaws.....	90
<i>Helohyus plicodon</i> , <i>Helohyus milleri</i> , <i>Perchærus trichænus</i> , <i>Perchærus probus</i> : right upper dentitions.....	91
<i>Helohyus validus</i> <i>Helohyus lentus</i> , <i>Perchærus probus</i> , <i>Perchærus socialis</i> , <i>Perchærus</i> <i>trichænus</i> : right third lower molars.....	93
<i>Perchærus pristinus</i> : left lower dentition.....	95
<i>Mæritherium lyonsi</i> : mandible and second upper right incisor tooth.....	126
<i>Mæritherium lyonsi</i> : left ramus of mandible, incomplete.....	127
<i>Mæritherium gracile</i> : left ramus of mandible, incomplete.....	129
<i>Mæritherium</i> and <i>Palæomastodon</i> : comparison of molars.....	131
<i>Mæritherium trigodon</i> : superior view of skull.....	133
<i>Mæritherium trigodon</i> : lateral view of skull.....	135
<i>Mæritherium trigodon</i> : right maxilla.....	136
<i>Mæritherium trigodon</i> : right ramus of mandible, incomplete.....	137
<i>Mæritherium</i> , <i>Palæomastodon</i> , and <i>Phiomia</i> : left upper and lower griding teeth	138
Ilium and its deeper musculature in the two dinosaurian orders and birds, to show contrast in preacetabular parts.....	142
<i>Iguana</i> and Alligator: dorsal views of pelvic muscles.....	144
<i>Gyrodus macrophthalmus cubensis</i> : vomerine and mandibular dentition.....	225
<i>Gyrodus macrophthalmus cubensis</i> : part of paratype, showing scales covering lower part of surface extending from behind pectoral girdle nearly to pelvis	226
<i>Caturus deani</i> : type skull.....	227
<i>Sauropsis woodwardi</i> : type.....	231
<i>Eugnathides browni</i> : type skull, portion of right pectoral fin and scalation.....	236
<i>Leptolepis euspondylus</i> : type, showing outline of skull, ceratohyal, vertebræ, neural arches, and ribs.....	237
Map showing distribution of <i>Buarremon brunneinuchus</i> and <i>Buarremon inornatus</i>	247
Map illustrating the known distribution of <i>Buarremon brunneinuchus</i> and <i>Buar-</i> <i>remon inornatus</i> in the Subtropical Zone of Ecuador.....	255
Map showing the distribution of the gray and black or black-crowned members of the genus <i>Buarremon</i>	259

	PAGE
<i>Eryops megacephalus</i> : flexor and extensor side views of lower arm, carpus, and manus; restoration of lower arm, carpus, and manus, based on same specimen.....	281
<i>Ambystoma opacum</i> and <i>Ascaphus truei</i> : carpus.....	283
Evolution of the carpus in crossopterygian ancestor, ancestral tetrapod, and primitive amphibian	284
Evolution of the tarsus in ancestral tetrapod, primitive amphibian, and recent urodele.....	286
<i>Geckolepis polylepis</i> and <i>Voeltzkowia mira</i> : longitudinal sections through the dorsal scales.....	304
<i>Ardeosaurus brevipes</i> : dorsal view of skull.....	306
<i>Chamops</i> : portions of right dentary with teeth.....	309
<i>Amphisbæna cæca</i> : hyoid apparatus and enlarged extra-columella of embryo.	
<i>Rhineura floridana</i> : extra-columella <i>in situ</i>	317
<i>Gerrhonotus scincicauda scincicauda</i> and <i>Xestops</i> species: portion of left maxillary with teeth.....	329
Chart illustrating the phylogeny and classification of the families of lizards....	333
Various types of saurian interclavicles.....	367
<i>Gerrhosaurus nigrolineatus</i> : dorsal scutes.....	397
Various types of the os hypischium.....	407
Ascalabota: ventral view of mid-dorsal vertebræ, the eighth forward from the sacrum.....	437
Scincomorpha: ventral view of mid-dorsal vertebræ, the eighth forward from the sacrum.....	439
Anguimorpha: mid-dorsal vertebræ and ribs.....	441
Platynota: mid-dorsal vertebræ.....	443
Ascalabota: hyoid apparatus.....	445
Autarchoglossa: hyoid apparatus.....	447
Reptilia: throat muscles, for comparison with those of lizards.....	449
Ascalabota: throat muscles.....	451
Scincomorpha: hyoid muscles.....	453
Anguimorpha and Serpentes: throat muscles.....	455
Anguimorpha: throat muscles.....	457
Comparison of superficial body musculature of an ascalabotoid and an autarchoglossid, showing also pattern of throat musculature in the Gekkonidæ.....	459
<i>Xenosaurus grandis</i> : ventral shoulder and body muscles surrounding the shoulder girdle.....	461
<i>Gerrhosaurus</i> and <i>Xenosaurus</i> : ventral shoulder musculature, showing the relations of the muscles to the excavated parts and the processes of the bony elements.....	463
<i>Bachia intermedia</i> : shoulder girdle and parasternum: left forefoot.....	465
<i>Xantusia vigilis</i> : shoulder girdle.....	467
<i>Anniella pulchra nigra</i> : cartilaginous shoulder girdle, clavicles, and muscles adjoining the shoulder girdle. <i>Feylinia currorii</i> : shoulder girdle. <i>Bachia intermedia</i> : right half of pelvis.....	469
<i>Dibamus novæ-guinææ</i> : shoulder girdle.....	471

	PAGE
A series showing modifications of the clavicles in various lizards	473
Osteoderms of lizards	475
Skulls and vertebræ of Glyptosauridæ and vertebræ of other Anguroids	477
<i>Xestops</i> : reconstruction of skull	479
Skull of <i>Gerrhonotus</i> and portions of skulls of Glyptosauridæ	481
<i>Ortalis phengiles</i> : anterior and internal views of left humerus	487
<i>Buteo typhoïus</i> : anterior view of lower part and external face of right tarso-metatarsus	490
<i>Buteo typhoïus</i> : outer view of left coracoid	492
<i>Geranoaëtus contortus</i> : outer and inner views of left tarso-metatarsus: distal outline of trochleæ of left tarso-metatarsus: and proximal view of head of left tarso-metatarsus	493
<i>Geranoaëtus contortus</i> : inner face of broken left metacarpus	496
<i>Geranoaëtus conterminus</i> : anterior face and posterior view of broken left tarso-metatarsus: distal outline of trochleæ of left tarso-metatarsus	498
<i>Urubitinga inecta</i> : anterior face, and posterior surface of left tibio-tarsus; distal outline of condyles of tibio-tarsus	501
<i>Urubitinga enecta</i> : posterior and anterior faces of left humerus	503
<i>Proictinia efferæ</i> : anterior face and outer surface of right tarso-metatarsus	505
Series of orang and chimpanzee third upper molars showing wide variability in size	511
Comparison of <i>Gorilla</i> , <i>Hesperopithecus</i> , and human molars	512
Comparison of <i>Gorilla</i> , <i>Hesperopithecus</i> , orang, and chimpanzee molars. View from above showing roots	514
Comparison of <i>Gorilla</i> , <i>Hesperopithecus</i> , and chimpanzee molars. Posterior side	515
<i>Hesperopithecus haroldcooki</i> : molars compared with m ³ of a chimpanzee	518
Comparison of <i>Pithecanthropus</i> , Australian, and orang molars	519
Comparison of <i>Pithecanthropus</i> , Australian, and orang molars	520
<i>Bassaricyon osborni</i> , <i>Cercoleptes (Potos) flavus</i> , <i>Nasua</i> species, <i>Viverra zibetha</i> , <i>Ælurus fulgens</i> , <i>Procyon lotor</i> , and <i>Mephitis</i> species: upper molars	521
Upper molars of modern carnivores, showing roots	522
Comparison of <i>Hesperopithecus</i> molars with <i>Hyænarcos</i> and other ursoid carnivore molars	523
Comparison of <i>Hesperopithecus</i> molars with <i>Hyænarcos</i> and other ursoid carnivore molars, viewed from above	524
Comparison of <i>Hesperopithecus</i> molars with <i>Hyænarcos</i> and other ursoid carnivore molars. Mesial or anterior view	525
Comparison of <i>Pithecanthropus</i> and orang second and third upper molars	528
Comparison of <i>Pithecanthropus</i> and orang second and third upper molars. Anterior and posterior views	529
<i>Alligator sinense</i> : superior, lateral, and inferior views of skull	554
<i>Alligator sinense</i> : lateral and superior views of mandible	560
<i>Rhinoceros sinensis</i> : palate of neotype skull	564
<i>Rhinoceros sinensis</i> : front of skull and jaws	566
<i>Stegodon orientalis</i> : adult skull	568
<i>Stegodon orientalis</i> : young skull and lower jaw	569
<i>Stegodon orientalis</i> : palate of adult skull	570

	PAGE
<i>Stegodon orientalis</i> : palatal view of skull.....	571
<i>Rhizomys troglodytes</i> : type skull.....	575
<i>Rhizomys troglodytes</i> : side view of skull and jaws, and outer and top views of lower jaw.....	576
<i>Æluropus fovealis</i> : lower jaw, outer and crown views of teeth.....	577
<i>Æluropus fovealis</i> : outer and top views of lower jaw.....	578
<i>Ursus kokeni</i> : outer and top views of type lower jaw.....	580
<i>Arctonyx rostratus</i> : top view of type skull.....	581
<i>Arctonyx rostratus</i> : palatal view of type skull.....	582
<i>Arctonyx rostratus</i> : outer and top views of lower jaw.....	583
<i>Cyon antiquus</i> : top and outer views of type lower jaw.....	584
<i>Felis tigris</i> : skull and jaws.....	585
<i>Viverra</i> species, lower jaw; <i>Bunopithecus sericus</i> , lower jaw fragment; <i>Rhinopithecus tingianus</i> , skull.....	586
<i>Rhinopithecus tingianus</i> : top and palatal views of type skull.....	587
<i>Tapirus (Megatapirus) augustus</i> : side view of type skull.....	589
<i>Tapirus augustus</i> : palatal view of type skull.....	590
<i>Tapirus augustus</i> : top view of type lower jaw.....	591
<i>Tapirus augustus</i> : outside view of type lower jaw.....	593
<i>Sus hyotherioides</i> : skull and jaws.....	594
<i>Bibos geron</i> : top and side views of skull.....	595
<i>Bibos geron</i> : palatal view of skull.....	596
<i>Coryphodon testis</i> , hypothetical intermediate form, and <i>Uintatherium stenops</i> : occlusal relations of molars.....	600
<i>Coryphodon testis</i> : left upper and right lower cheek teeth.....	601
<i>Uintatherium lucare</i> , outer and crown views of left upper cheek teeth: <i>Uintatherium pugnax</i> , crown and inner views of right lower cheek teeth.....	602
<i>Uintatherium stenops</i> : third left upper molar.....	603
Restorations of the pelvis in saurischian dinosaurs.....	605
The musculature of the pelvis in primitive reptiles, the primitive "Archosauria," <i>Alligator</i> , and saurischian dinosaurs, to show steps in differentiation of the pubo-ischium.....	606
Diagram to show effects upon the muscles of the pubo-ischium of the change in the femur from the primitive to the archosaurian position.....	607
<i>Tyrannosaurus</i> : lateral view of pelvic region with appendicular muscles restored.....	612
<i>Tyrannosaurus</i> : lateral view of pelvic region with ilio-tibialis, ambiens, and ilio-fibularis cut out.....	613
<i>Tyrannosaurus</i> : lateral view of pelvic region with ilio-femoralis, flexor tibialis externus, flexor tibialis 2, and femoro-tibialis removed.....	614
<i>Tyrannosaurus</i> : lateral view of pelvic region with the coccygeo-femoralis, pubo-ischio-femoralis internus 2, and flexor tibialis internus 3 cut.....	615
<i>Tyrannosaurus</i> : lateral view of pelvic region with adductor 2, remaining flexors and pubo-ischio-femoralis internus 1 removed.....	616
<i>Pinnotheres jamesi</i> : left outer maxilliped and abdomen of male holotype.....	627
<i>Pinnotheres pichilínquei</i> : left outer maxilliped, right first ambulatory leg, and abdomen of male paratype.....	627
<i>Parapinnixa nitida</i> : abdomen of male.....	628
<i>Geotice americanus</i> : left outer maxilliped of male paratype.....	630

LIST OF NEW TAXONOMIC NAMES IN THIS VOLUME

HIGHER GROUPS		PAGE
Scincomorpha Camp.....		295
FAMILIES		
Ardeosauridæ Camp.....		295
Feyliniidæ Camp.....		295
Anelytropsidæ Camp.....		295
SUBFAMILIES		
Varaninæ Camp.....		295
Megalaninæ Camp.....		295
Saniwinæ Camp.....		295
Zonurinæ Camp.....		295
Chamæosaurinæ Camp.....		295
GENERA		
<i>Hæmatotrema</i> Stunkard.....		201
<i>Eugnathides</i> Gregory.....		235
<i>Anabarrilius</i> Cockerell.....		532
<i>Bunopithecus</i> Matthew and Granger.....		588
SPECIES AND SUBSPECIES		
<i>Pipilo fuscus jamesi</i> Townsend.....		20
<i>Momotus momota simplex</i> Chapman.....		44
<i>Trichometra europæica</i> Clark.....		148
<i>Ophiacantha parasema</i> Clark.....		155
<i>Spirorchis scripta</i> Stunkard.....		190
<i>Spirorchis elegans</i> Stunkard.....		192
<i>Spirorchis picta</i> Stunkard.....		193
<i>Hæmatotrema parvum</i> Stunkard.....		201
<i>Gyrodus macrophthalmus cubensis</i> Gregory.....		224
<i>Caturus deani</i> Gregory.....		227
<i>Sauropsis woodwardi</i> Gregory.....		230
<i>Eugnathides browni</i> Gregory.....		235
<i>Leptolepis euspondylus</i> Gregory.....		236
<i>Ortalis phengites</i> Wetmore.....		487
<i>Buteo typhoius</i> Wetmore.....		489
<i>Geranoaëtus contortus</i> Wetmore.....		492
<i>Geranoaëtus conterminus</i> Wetmore.....		497
<i>Urubitinga enecta</i> Wetmore.....		500
<i>Proictinia effera</i> Wetmore.....		504
<i>Rhizomys troglodytes</i> Matthew and Granger.....		574
<i>Æluropus fovealis</i> Matthew and Granger.....		579
<i>Ursus kokeni</i> Matthew and Granger.....		580
<i>Arctonyx rostratus</i> Matthew and Granger.....		580

	PAGE
<i>Cyon antiquus</i> Matthew and Granger.....	584
<i>Bunopithecus sericus</i> Matthew and Granger.....	588
<i>Rhinopithecus tingianus</i> Matthew and Granger.....	588
<i>Tapirus (Megatapirus) augustus</i> Matthew and Granger.....	588
<i>Pilumnus townsendi</i> Rathbun.....	624
<i>Pinnotheres jamesi</i> Rathbun.....	625
<i>Pinnotheres pichilinquai</i> Rathbun.....	627
<i>Goetice americanus</i> Rathbun.....	629

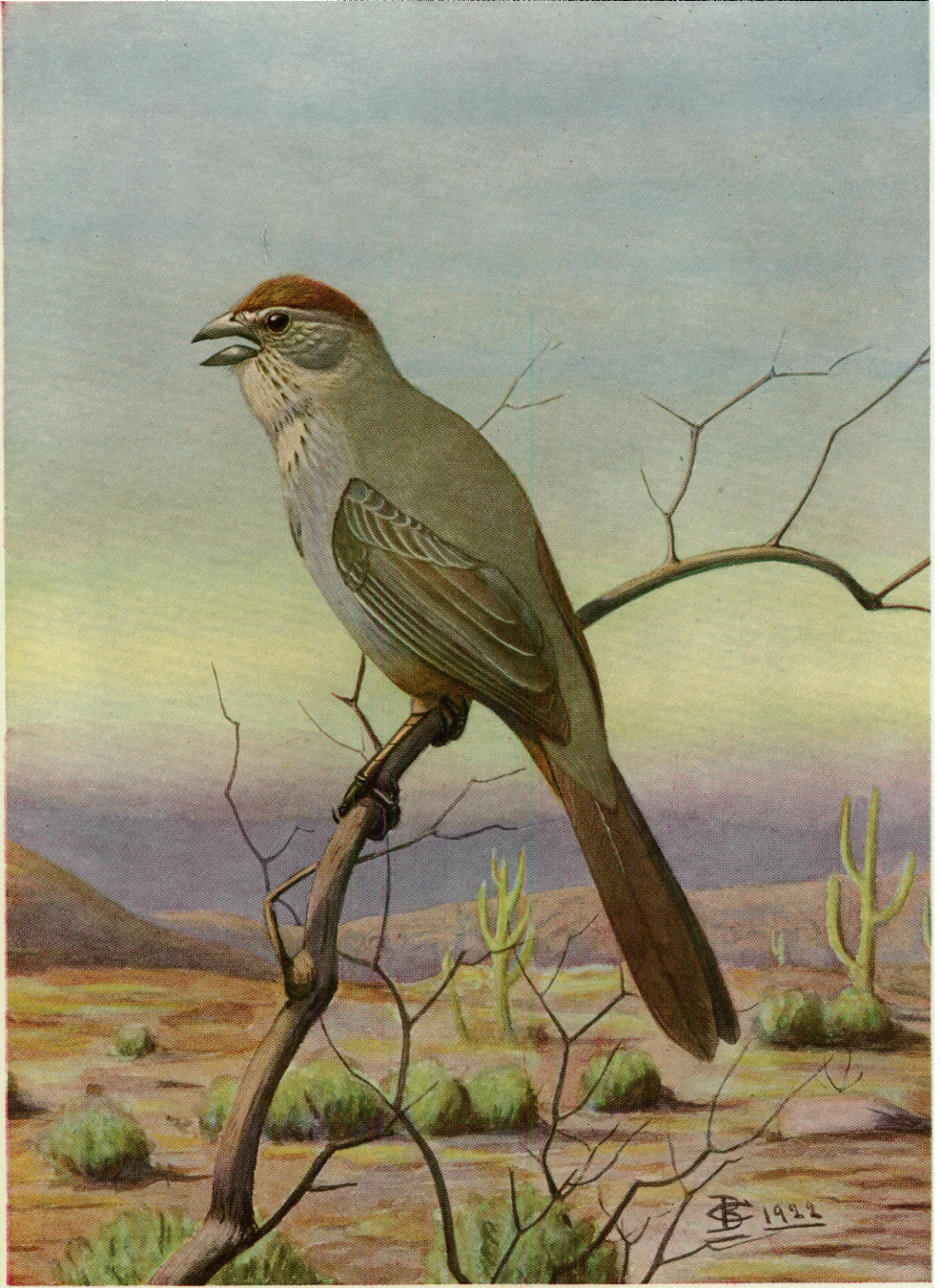
ERRATA

Page 12, line 1 from top, for *Ægialites* read *Ægialitis*.

“ 93, (d), in caption, for *Peichærus* read *Perchærus*.

“ 458, line 1, for ascalatboid read ascalabotoid.

Pages 462 and 478 are incorrectly numbered.



Tiburon Island Towhee
Pipilo fuscus jamesi Townsend

BULLETIN
OF
THE AMERICAN MUSEUM OF NATURAL HISTORY

VOLUME XLVIII, 1923

59.82(72.2)

Article I.—BIRDS COLLECTED IN LOWER CALIFORNIA

BY CHARLES HASKINS TOWNSEND

PLATE I

During the voyage of the U. S. Fisheries Steamer 'Albatross' in Lower California waters in 1911, collecting parties were sent ashore at thirty different points on the lower part of the peninsula, on islands in the Gulf of California and along the west coast. Among the collections were 804 birds representing 159 species and subspecies. As more than three-fourths of these were land birds, many of them peculiar to Lower California, and as certain islands had not previously been visited by naturalists, the collection is of considerable interest.

With the exception of those from Guadalupe Island, all of the birds taken were from points south of the San Benita Islands in the Pacific and Angel de la Guardia Island in the Gulf, a section including the lower half of the peninsula, and embracing all of the Cape faunal district. Specimens were obtained of most of the species characteristic of this district which lies within the arid tropical life zone.

The expedition being engaged in several lines of inquiry, including fishery and oceanographic work, and the duration of the voyage limited to two months, the time available for bird collecting was not sufficient for any very thorough examination of the bird fauna. The total number of days or parts of days spent at anchor was forty-three, but at some points the vessel remained at anchor only a few hours.

Following is a list of the anchorages, with dates of arrival and departure:

PORTS VISITED	ARRIVAL	DEPARTURE
San Francisco.....		Feb. 23
San Diego.....	Feb. 25	Feb. 28
Guadalupe Island.....	Mar. 2	Mar. 4
San Diego.....	Mar. 6	Mar. 7
San Benito Ids.....	Mar. 9	Mar. 10
Cerros Island.....	Mar. 10	Mar. 12
San Bartolome Bay.....	Mar. 13	Mar. 15
San Cristobal Bay.....	Mar. 15	Mar. 15
San Roque Id.....	Mar. 15	Mar. 15
Abreojos Anchorage.....	Mar. 16	Mar. 16
Santa Maria Bay.....	Mar. 18	Mar. 18
Magdalena Bay.....	Mar. 18	Mar. 19
Margarita Island.....	Mar. 19	Mar. 20
Marcy Channel.....	Mar. 20	Mar. 21
Cape San Lucas.....	Mar. 23	Mar. 25
San Jose del Cabo.....	Mar. 25	Mar. 26
Pichilingue Bay.....	Mar. 27	Mar. 30
San Josef Island.....	Mar. 30	Apr. 1
Agua Verde Bay.....	Apr. 1	Apr. 2
Carmen Island.....	Apr. 2	Apr. 3
Mulege.....	Apr. 4	Apr. 5
Concepcion Bay.....	Apr. 5	Apr. 8
San Francisquito.....	Apr. 9	Apr. 10
Angel de la Guardia Id.....	Apr. 10	Apr. 11
Tiburon Id.....	Apr. 11	Apr. 13
San Esteban Id.....	Apr. 13	Apr. 14
Guaymas.....	Apr. 15	Apr. 15
Santa Catalina Id.....	Apr. 16	Apr. 16
Santa Cruz Id.....	Apr. 16	Apr. 16
Pichilingue Hbr. (La Paz).....	Apr. 17	Apr. 19
Espiritu Santo Id.....	Apr. 19	Apr. 19
Ceralbo Island.....	Apr. 19	Apr. 19
San Jose del Cabo.....	Apr. 20	Apr. 20
San Bartolome Bay.....	Apr. 23	Apr. 23
San Francisco.....	Apr. 28	

The islands visited by the expedition that are known to have endemic species of birds are Guadalupe, the San Benitas, Cedros off Lower California, and Tiburon off the coast of Sonora.

Guadalupe Island, in latitude 29° and 135 miles west of San Quintin Bay, is about 20 miles long and from 3 to 7 miles wide. It is mountainous, the greatest height being 4,500 feet. Guadalupe is partly wooded and has a few fresh-water springs. It has been inhabited temporarily.

The following species and subspecies of land birds are peculiar to the island:

<i>Polyborus lutosus</i>	<i>Pipilo consobrinus</i>
<i>Colaptes cafer rufipileus</i>	<i>Salpinctes obsoletus guadeloupensis</i>
<i>Carpodacus amplus</i>	<i>Thryomanes brevicauda</i>
<i>Junco insularis</i>	<i>Regulus calendula obscurus</i>

There are three small islands in the San Benito group which lie about 15 miles west of Cedros Island. West Benito, the largest island, has a central height of 661 feet. All lack fresh water and are uninhabited. There are two endemic birds, *Passerculus rostratus sanctorum* and *Carpodacus mcgregori*.

Cedros Island, about 10 miles from the nearest point of the mainland, has a length of 21 miles and a width of from 3 to 9 miles. It is mountainous, the highest peak being nearly 4,000 feet. The island is sparsely wooded, with some cedars and pines on the higher elevations. Cedros has a few springs of fresh water and has been temporarily inhabited by miners. The only land bird peculiar to the island is *Thryomanes bewickii cerroensis*.

Tiburon is the largest island in the Gulf; it is thirty miles long by fifteen in width, and has a height of 4,000 feet.

The fauna of Tiburon Island has been derived chiefly from the mainland of Sonora, from which it is separated by a channel varying from one to three miles in width.

None of the thirteen species of land birds secured on Tiburon Island are referable to races belonging to Lower California. The width of the Gulf of California averages considerably greater than that of the peninsula, exceeding 100 miles in the latitude of Guaymas, its central portion. The following land birds were taken on Tiburon Island:

<i>Passerculus rostratus rostratus</i>	<i>Colaptes chrysoides mearnsi</i>
<i>Pipilo fuscus jamei</i>	<i>Centurus uropygialis uropygialis</i>
<i>Cardinalis cardinalis affinis</i>	<i>Toxostoma bendirei</i>
<i>Phainopepla nitens</i>	<i>Auriparus flaviceps lamprocephalus</i>
<i>Dryobates scalaris cactophilus</i>	<i>Heleodytes brunneicapillus brunneicapillus</i>
<i>Myiarchus cinerascens cinerascens</i>	
<i>Empidonax difficilis difficilis</i>	<i>Poliotilta plumbea</i>

One of the birds in the above list (*Pipilo fuscus jamei*) is described elsewhere in this paper as a new subspecies. It is probable that this large and mountainous island contains other unknown birds. It had not previously been visited by ornithologists. Tiburon is inhabited by Seri Indians believed to be dangerous to small parties. Science as yet knows nothing of the interior of this island.

Although most species of birds should have been nesting at this season, March and April, very few nests were seen.

Birds were collected chiefly by Messrs. H. E. Anthony and P. I. Osburn, although many were obtained by Dr. Paul Bartsch and myself. The naval officers attached to the 'Albatross' brought on board numerous specimens of water birds.

Lower California has not yet been fully explored ornithologically. The following records, relating mostly to the distribution of the species met with, include some localities not previously visited by ornithologists, and are, with a few exceptions, restricted to localities visited by the expedition.

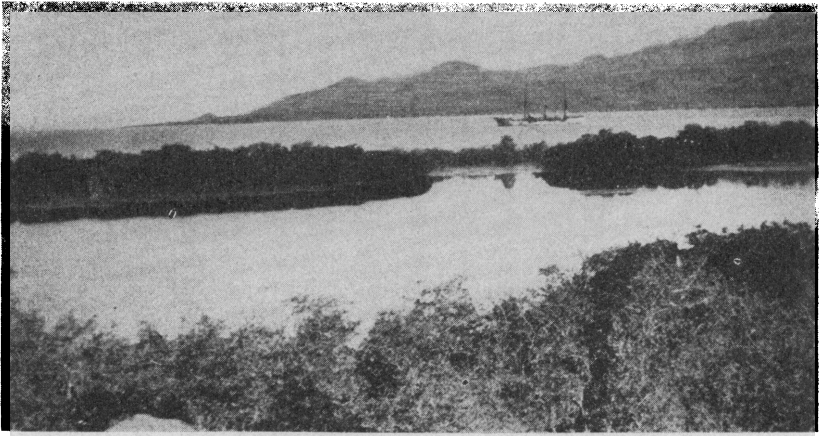


Fig. 1. The 'Albatross' at San Josef Island, Gulf of California.

The nomenclature is that of the A. O. U. list, with such additions as have appeared in Ridgway's 'Birds of North and Middle America.'

For information on the physiography of the localities here referred to, reference may be made to part one of this series of reports, which contains the narrative of the voyage with numerous illustrations.

***Colymbus nigricollis californicus* (Heermann)**

EARED GREBE

The eared grebe was observed at several points in the Gulf, being quite common at San Josef Island, Agua Verde Bay, San Francisquito Bay, and Angel Guardia Island. Eight specimens, San Josef Island, March 30 and San Francisquito Bay, April 10.

***Gavia pacifica* (Lawrence)**

PACIFIC LOON

One specimen was taken April 11 at Tiburon Island where it was rather abundant. Our notes do not show that it was observed elsewhere.

***Cerorhinca monocerata* (Pallas)**

RHINOCEROS AUKLET

A single specimen was secured at San Cristobal Bay on March 15. There are no records of this auklet having been found farther south.

***Ptycorhamphus aleuticus* (Pallas)**

CASSIN'S AUKLET

Four specimens taken: Guadalupe Island, March 2-4, and West San Benito Island, March 10. We found parts of East Benito so riddled with burrows of auklets that it was difficult to walk without breaking into them. When cruising in the schooner 'Laura' late in November, 1884, I took two specimens of this auklet off San Cristobal Bay.

***Brachyrhamphus craverii* (Salvadori)**

CRAVERI'S MURRELET

This bird we found only at San Esteban Island in the Gulf, where a single example was secured April 14. San Esteban Island is about twenty miles from Isla Raza where Dr. T. H. Streets found Craveri's murrelet breeding in abundance in April, 1875. The species is peculiar to Lower California and the Gulf regions.

***Larus philadelphia* (Ord)**

BONAPARTE'S GULL

Specimens were taken at Carmen Island, April 3, Mulege, April 4, and Tiburon Island, April 12. It was fairly common at La Paz on April 18. On March 27, 1889, I obtained this gull in the northern part of the Gulf.

***Larus heermanni* Cassin**

HEERMAN'S GULL

This species was observed from April 1 to 19 at many points in the Gulf, from Cerralbo Island northward to Angel Guardia and Tiburon islands. It breeds in considerable numbers at Isla Raza and Ildefonso.

***Sterna maxima* Boddaert**

ROYAL TERN

Numerous at San Josef Island on March 30 and at Guaymas on April 15. Specimens were obtained at San Cristobal Bay, March 15, Abreojos Point, March 16, and Angel Guardia Island, April 10.

Sterna elegans Gambel

ELEGANT TERN

Common in April at several points in the Gulf from La Paz to Angel Guardia and San Esteban islands. Observed at Guaymas, April 15. Sixteen specimens, one of which was obtained on the west side of the peninsula at Abreojos Point, March 16.

Puffinus opisthomelas Coues

BLACK-VENTED SHEARWATER

One specimen, San Bartolome Bay, March 13.

Oceanodroma macrodactyla W. Bryant

GUADALUPE PETREL

Two specimens, Guadalupe Island, March 2-5.

Oceanodroma kaedingi Anthony

KAEDING'S PETREL

While the 'Albatross' was anchored at Guadalupe Island, March 2-5, nine specimens were captured on board at night, doubtless attracted by the electric lights around the deck house. Petrels were very numerous and their calls were heard about the vessel all night.

Oceanodroma melania Bonaparte

BLACK PETREL

Two specimens, San Jose del Cabo March 26 and San Francisquito Bay, April 9. On a former voyage I found this petrel abundant off Guaymas.

Oceanodroma homochroa (Coues)

ASHY PETREL

One specimen, taken on board at night, off San Benito Islands, April 23.

Sula brewsteri Goss

BREWSTER'S BOOBY

Observed in the Gulf from March 30 to April 18, at most of the points visited by the expedition. One specimen, taken at San Josef Island, March 31. In 1889 I found this booby breeding in considerable numbers at Georges Island near the head of the Gulf.

In 1888 Col. N. S. Goss estimated that about 700 of this species and about 1000 blue-footed boobies were breeding on San Pedro Martir Isle, which lies midway in the Gulf about 25 miles south of Tiburon

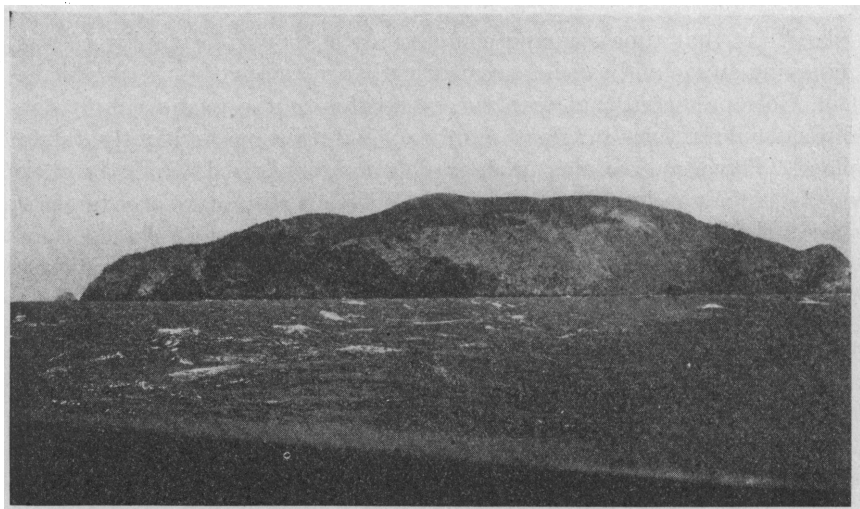


Fig. 2. San Pedro Martir Island, Gulf of California.
Nesting place of *Sula brewsteri*.

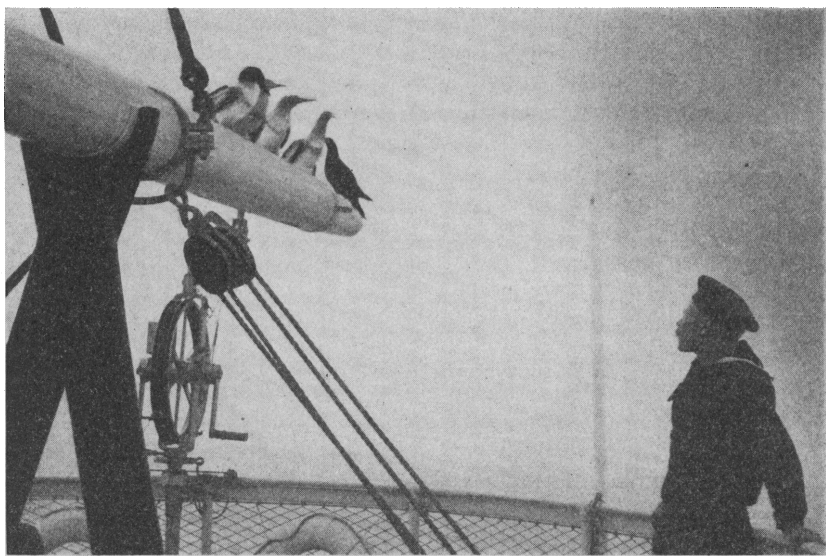


Fig. 3. Boobies. U. S. S. 'Albatross,' in the Gulf of California.

Island. At that time a guano company with about 135 employees was removing guano and causing great disturbance among the nesting birds. Col. Goss predicted that with the exhaustion of the guano supply the birds would return in great numbers, and this has evidently taken place. The accompanying photograph taken on April 15 from the deck of the 'Albatross' while passing San Pedro Martir, shows the greater part of the island densely covered with birds. This barren rock, less than a mile in length and width, is over 1000 feet in height. We did not attempt to land, owing to the force of the gale which was blowing.

Phalacrocorax auritus albociliatus Ridgway

FARALLON CORMORANT

One specimen, Magdalena Bay, March 20. Cormorants were seen almost daily during the voyage. A compact flock of a thousand or more was seen at Santa Maria Bay, March 18, and a flock of nearly as many at San Roque Island, March 15.

Fregata aquila (Linnæus)

MAN-O'-WAR-BIRD

This bird is common about the lower part of the peninsula from Magdalena Bay on the Pacific, where it nests on the mangroves, to Concepcion Bay on the Gulf.

Chaulelasmus streperus (Linnæus)

GADWALL

San Jose del Cabo, March 26, one specimen.

Marila americana (Eyton)

REDHEAD

San Jose del Cabo, March 26, one specimen.

Anas platyrhynchos Linnæus

MALLARD

Three mallards were seen at San Josef Island on March 30. Not observed elsewhere.

Marila affinis (Eyton)

LESSER SCAUP DUCK

Seen at La Paz and San Josef Island late in March, and at Angel Guardia Island, April 10.

Nettion carolinense (Gmelin)

GREEN-WINGED TEAL

A small flock seen at La Paz, March 28.

Mareca americana (Gmelin)

BALDPATE

Seen at Angel Guardia Island, April 10. Wild ducks are not common in Lower California as there are few permanent streams and no lakes or fresh-water marshes.

Oidemia perspicillata (Linnæus)

SURF SCOTER

A few were observed at Angel Guardia Island, April 10 and 11.

Mergus serrator Linnæus

RED-BREASTED MERGANSER

Observed at Mulege, April 4 and at Tiburon Island, April 11.

Guara alba (Linnæus)

WHITE IBIS

Rather common at San Josef Island, March 30 to April 1. One specimen.

Plegadis guarauna (Linnæus)

WHITE-FACED GLOSSY IBIS

Two specimens, San Jose del Cabo, April 22.

Botaurus lentiginosus (Montagu)

AMERICAN BITTERN

Magdalena Bay, March 20, one specimen.

Ardea herodias treganzai Court

WESTERN GREAT BLUE HERON

Santa Maria Bay, March 18 and Angel Guardia Island, April 10, two specimens.

Egretta candidissima (Gmelin)

SNOWY EGRET

Obtained at San Francisquito Bay, April 9 and at Tiburon Island. April 10.

Dichromanassa rufescens (Gmelin)

REDDISH EGRET

Specimens obtained at Magdalena Bay, March 20 and at San Josef Island, March 30. This egret was observed at Concepcion Bay, April 8 and at Guaymas, April 7.

Hydranassa tricolor ruficollis (Gosse)

LOUISIANA HERON

Magdalena Bay, March 20, one specimen. Observed at Concepcion Bay, April 7.

Florida cærulea (Linnæus)

LITTLE BLUE HERON

Magdalena Bay, March 21, one specimen. Several were seen at La Paz, April 18.

Butorides virescens frazari (Brewster)

FRAZAR'S GREEN HERON

Specimens of this form of the green heron were obtained at Santa Maria Bay, March 18, and at San Josef Island, March 31. Green Herons probably of this race were seen at Mulege, April 4.

Nycticorax nycticorax nævius (Böddaert)

BLACK-CROWNED NIGHT HERON

Specimens were taken at Abreojos Point, March 16, and at Magdalena Bay, March 22. Night herons apparently of this form were observed at San Josef Island, March 30, and at Concepcion Bay, April 5.

Nyctanassa violacea (Linnæus)

YELLOW-CROWNED NIGHT HERON

Taken at Santa Margarita Island, March 20.

Pisobia minutilla (Vieillot)

LEAST SANDPIPER

Taken at San Bartolome Bay, March 13 and 14 and at Abreojos Point, March 16.

Ereunetes mauri Cabanis

WESTERN SANDPIPER

Obtained at San Bartolome Bay, March 13 and 14, Abreojos Point, March 16, and at Magdalena Bay, March 20.

***Calidris leucophæa* (Pallas)**

SANDERLING

Abreojos Point, March 16, two specimens.

***Limosa fedoa* (Linnæus)**

MARBLED GODWIT

Magdalena Bay, March 20, two specimens.

***Totanus melanoleucus* (Gmelin)**

GREATER YELLOW-LEGS

Abreojos Point, March 16, Magdalena Bay, March 20, five specimens.

***Catoptrophorus semipalmatus* (Gmelin)**

WILLET

Abreojos Point, March 16, five specimens.

***Heteractitis incanus* (Gmelin)**

WANDERING TATLER

Cerro Island, March 10, two specimens.

***Actitis macularis* (Linnæus)**

SPOTTED SANDPIPER

San Bartolome Bay, March 13, Concepcion Bay, April 8, and La Paz, April 9, three specimens.

***Numenius americanus* Bechstein**

LONG-BILLED CURLEW

Abreojos Point, March 16 and Magdalena Bay, March 21, two specimens.

***Numenius hudsonicus* Latham**

HUDSONIAN CURLEW

Santa Margarita Island, March 19, two specimens.

***Squatarola squatarola* (Linnæus)**

BLACK-BELLIED PLOVER

Abreojos Point, March 16, two specimens.

***Oxyechus vociferus* (Linnæus)**

KILLDEER

San Jose del Cabo, March 26 and Miraflores, May 11, three specimens.

***Ægialites semipalmata* (Bonaparte)**

SEMIPALMATED PLOVER

Abreojos Point, March 16, Tiburon Island, April 12, two specimens.

***Ægialitis nivosa* Cassin**

SNOWY PLOVER

Abreojos Point, March 16, Magdalena Bay, March 20, and Carman Island, April 23, eight specimens.

***Ochthodromus wilsonius* (Ord)**

WILSON'S PLOVER

La Paz, March 27, one specimen.

***Aphriza virgata* (Gmelin)**

SURF-BIRD

The surf-bird probably winters in considerable numbers in the Lower California and Gulf region, having been taken at Abreojos Point on the Pacific side of the peninsula on March 16, at San Josef Island in the Gulf on March 31, and at Tiburon Island off the coast of Sonora on April 12. Twenty or more were seen at San Josef Island.

It is not mentioned by Bryant, or Brewster, nor in any of the papers on Lower California birds with which the writer is familiar. Although its migration route extends from Alaska to Chili, it has never been recorded as common anywhere, and its breeding range is still unknown. So far as observed by the writer, it frequents low rocks along shore that are almost a-wash. All that were seen were comparatively fearless, showing little concern when approached.

***Arenaria melanocephala* (Vigors)**

BLACK TURNSTONE

San Roque Island, March 15, Abreojos Point, March 16, and Tiburon Island, April 12, five specimens.

***Hæmatopus frazari* Brewster**

FRAZAR'S OYSTER-CATCHER

San Benito Islands, March 9, Cerros Island, March 10, Magdalena Bay, March 20, San Josef Island, March 31, and San Esteban Island, April 1, seven specimens.

The oyster-catcher was observed at Agua Verde Bay, April 1, Angel Guardia Island, April 10, and Santa Catalina Island, April 16. A nest and eggs were found at Concepcion Bay, April 7.

***Hæmatopus bachmani* Audubon**

BLACK OYSTER-CATCHER

Cerros Island, March 10, and San Roque Island, March 15, two specimens.

***Lophortyx californica vallicola* (Ridgway)**

VALLEY QUAIL

Not observed by the expedition on the Pacific coast of the peninsula, but found common at many places on the Gulf coast from Cape San Lucas northward to Agua Verde Bay, seven specimens.

***Columba fasciata vioscæ* Brewster**

VIOSCA'S PIGEON

Miraflores, April 25, May 5 and 20, and San Bernardo Mountain, May 13, eight specimens. Not seen north of the Cape region.

***Melopelia asiatica mearnsi* Ridgway**

WESTERN WHITE-WINGED DOVE

Late in March ten specimens were obtained at Cape San Lucas, San Jose del Cabo, and La Paz.

Observed at most points in the Gulf visited by the 'Albatross,' including Tiburon Island.

***Zenaida macroura marginella* (Woodhouse)**

WESTERN MOURNING DOVE

Cape San Lucas, March 22 and 23. Observed at Mulege, April 4 and at Tiburon Island, April 13.

***Chamæpelis passerina pallescens* Baird**

MEXICAN GROUND DOVE

Cape San Lucas, March 24, San Jose del Cabo, March 26, six specimens. The ground dove was seen at Mulege, April 4.

***Accipiter cooperi* (Bonaparte)**

COOPER'S HAWK

Cape San Lucas, March 24, one specimen.

***Parabuteo unicinctus harrisi* (Audubon)**

HARRIS'S HAWK

Cape San Lucas, March 23, one specimen.

Buteo borealis calurus Cassin

WESTERN RED-TAIL

Miraflores, April 25, one specimen.

Falco sparverius phalæna (Lesson)

DESERT SPARROW HAWK

West San Benito Island, March 9 and San Jose del Cabo, March 26, three specimens.

Falco sparverius peninsularis Mearns

SAN LUCAS SPARROW HAWK

Cape San Lucas, March 24 and Miraflores, May 2 and 18, six specimens.

Polyborus cheriway (Jacquin)

AUDUBON'S CARACORA

Santa Margarita Island, March 19 and Magdalena Bay, March 21, two specimens.

Pandion haliaetus carolinensis (Gmelin)

OSPREY

Observed at many places. Nests are conspicuous on the uninhabited islands such as Cedros and the San Benitos. Young ospreys were brought on board at Agua Verde Bay.

Cerro Island, March 10, one specimen.

Asio flammeus (Pontoppidan)

SHORT-EARED OWL

Cape San Lucas, March 23, one specimen.

Otus xantusi Brewster

XANTUS'S SCREECH OWL

Miraflores, April 25 and May 18, twelve specimens.

Bubo virginianus elachistus Brewster

DWARF HORNED OWL

Angel Guardia Island, April 11, Espiritu Santo Island, April 18, Miraflores, April 30 and May 12, and La Palma, April 20, eight specimens.

***Speotyto cunicularia hypogaea* (Bonaparte)**

BURROWING OWL

San Benito Islands, March 9 and Angel Guardia Island, April 10,
two specimens.

***Glaucidium hoskinsi* Brewster**

HOSKIN'S PIGMY OWL

Miraflores, April 25 and 30, two specimens.

***Micropallas whitneyi sanfordi* Ridgway**

SANDFORD'S ELF OWL

Miraflores, April 25 and May 11 and San Bernardo Mountain,
May 15, eight specimens.

***Geococcyx californianus* (Lesson)**

ROAD RUNNER

A single specimen was taken at San Jose del Cabo, April 24. Although the road runner is an inhabitant of most parts of the peninsula, it was seldom observed by our party. I saw one at San Cristobal Bay, November 16, 1884.

***Megaceryle alcyon* (Linnæus)**

BELTED KINGFISHER

Magdalena Bay, March 20 and La Paz, March 29, two specimens.

***Dryobates scalaris lucasanus* (Xantus)**

SAN LUCAS WOODPECKER

Common from Cape San Lucas to La Paz. Obtained also at Carmen, San Josef, and Santa Cruz islands, 17 specimens.

***Dryobates scalaris cactophilus* Oberholser**

CACTUS WOODPECKER

Tiburon Island, April 12.

***Melanerpes formicivorus angustifrons* Baird**

NARROW-FRONTED WOODPECKER

Miraflores, April 28 and May 8, ten specimens.

***Centurus uropygialis brewsteri* Ridgway**

BREWSTER'S WOODPECKER

Common from Cape San Lucas northward along the Gulf Coast to Mulege, 23 specimens.

Centurus uropygialis uropygialis Baird

GILA WOODPECKER

Tiburon Island, April 13, one specimen.

Colaptes chrysoides chrysoides Malherbe

GILDED FLICKER

Agua Verde Bay, April 2 and Miraflores, May 17, two specimens.

Colaptes chrysoides mearnsi Ridgway

MEARN'S GILDED FLICKER

Tiburon Island, April 13, one specimen.

Phalænoptilus nuttalli californicus Ridgway

DUSKY POOR-WILL

Miraflores, May 4, one specimen.

Chordeiles acutipennis inferior Oberholser

SAN LUCAS NIGHTHAWK

Miraflores, May 19, one specimen.

Calypte costæ (Bourcier)

COSTA'S HUMMING-BIRD

Cerro Island, March 10 and 12, Santa Maria Bay, March 18,
Agua Verde Bay, April 1, San Josef Island, April 1, ten specimens.**Calypte anna** (Lesson)

ANNA'S HUMMING-BIRD

Cerro Island, March 12, three specimens.

Basilinna xantusi (Lawrence)

XANTUS'S HUMMING-BIRD

San Josef Island, March 31, Agua Verde Bay, April 1, and Miraflores, May 4 and 11, ten specimens.

Tyrannus vociferans Swainson

CASSIN'S KINGBIRD

Cape San Lucas, March 23, San Jose del Cabo, March 26. Several
were seen at Agua Verde Bay, April 2, three specimens.

Myiarchus cinerascens pertinax (Baird)

LOWER CALIFORNIA FLYCATCHER

Common from Cape San Lucas northward along the Gulf coast to San Francisquito Bay. Taken also on San Josef and Cerralbo islands, 33 specimens.

Myiarchus cinerascens cinerascens (Lawrence)

ASH-THROATED FLYCATCHER

Tiburon Island, April 11 and 12, San Esteban Island, April 13 and 14, five specimens.

Sayornis sayus (Bonaparte)

SAY'S PHOEBE

Cerros Island, March 11 and 12 and Cape San Lucas, March 24.

Empidonax difficilis cineritius Brewster

SAN LUCAS FLYCATCHER

San Josef Island, March 31 and Agua Verde Bay, April 2.

Empidonax difficilis difficilis Baird

WESTERN FLYCATCHER

Tiburon Island, April 12.

Empidonax trailli trailli (Audubon)

TRAILL'S FLYCATCHER

San Bernardo Mountain, May 15. The only specimen secured is tentatively referred to the western form.

Empidonax wrighti Baird

WRIGHT'S FLYCATCHER

Cape San Lucas, March 23 and 24, La Paz, March 30, and Santa Cruz Island, April 16, seven specimens.

Otocoris alpestris actia Oberholser

CALIFORNIA HORNED LARK

Cerros Island, March 10, San Bartolome Bay, March 13 and 14. Shore larks were seen at Carmen Island, April 3.

Aphelocoma californica hypoleuca Ridgway

XANTUS'S JAY

Found from Santa Maria Bay on the Pacific to Concepcion Bay on the Gulf coast, 18 specimens.

***Corvus corax sinuatus* Wagler**

RAVEN

Specimens were taken at Cerros Island, March 12, Abreojos Point, March 16, and San Bartolome Bay, March 14. Ravens were seen at nearly all points visited by the expedition including Tiburon Island.

***Icterus parisorum* Bonaparte**

SCOTT'S ORIOLE

Cape San Lucas, March 23 and 24, Miraflores, April 25 and May 6. Seen also at Tiburon Island, April 11.

***Icterus cucullatus nelsoni* Ridgway**

ARIZONA HOODED ORIOLE

Common from Cape San Lucas northward along the Gulf coast to Agua Verde Bay. Seen also at Carmen Island, 11 specimens.

***Carpodacus mexicanus ruberrimus* Ridgway**

SAN LUCAS HOUSE FINCH

Common from Miraflores northward to Mulege. Observed also at Espiritu Santo and Santa Catalina islands, 29 specimens.

***Carpodacus mexicanus clementis* Mearns**

SAN CLEMENTE HOUSE FINCH

Cerros Island, March 12.

***Carpodacus mexicanus frontalis* (Say)**

HOUSE FINCH

The house finches seen on Tiburon and San Esteban islands were probably of this form, which occurs in Sonora.

***Carpodacus amplus* Ridgway**

GUADALUPE HOUSE FINCH

Guadalupe Island, March 1, 28 specimens.

***Carpodacus mcgregori* Anthony**

MCGREGOR'S HOUSE FINCH

West San Benito Island, March 9.

***Astragalinus psaltria hesperophilis* Oberholser**

GREEN-BACKED GOLDFINCH

San Jose del Cabo, March 25, Agua Verde Bay, April 2, and Mulege, April 4.

***Passerculus sandwichensis alaudinus* Bonaparte**

WESTERN SAVANNAH SPARROW

San Bartolome Bay, March 13.

***Passerculus rostratus guttatus* Lawrence**

SAN LUCAS SPARROW

Abreojos Point, March 16, Santa Maria Bay, March 19, and Magdalena Bay, March 20 and 21, ten specimens.

***Passerculus rostratus rostratus* (Cassin)**

LARGE-BILLED SPARROW

Found at most points on the peninsula visited by the expedition and also at Tiburon Island, 16 specimens.

***Passerculus rostratus sanctorum* Ridgway**

SAN BENITO SPARROW

San Benito Island, March 9, 16 specimens.

***Chondestes grammacus strigatus* Swainson**

WESTERN LARK SPARROW

Cape San Lucas, March 22 and 24, five specimens.

***Zonotrichia leucophrys leucophrys* (J. R. Forster)**

WHITE-CROWNED SPARROW

San Bartolome Bay, March 13, Cape San Lucas, March 24, and San Jose del Cabo, March 26.

***Zonotrichia coronata* (Pallas)**

GOLDEN-CROWNED SPARROW

Cerros Island, March 12 and Cape San Lucas, March 24.

***Spizella pallida* (Swainson)**

CLAY-COLORED SPARROW

Cape San Lucas, March 24, five specimens.

***Spizella breweri* Cassin**

BREWER'S SPARROW

Cape San Lucas, March 24, Carmen Island, April 3, and Espiritu Santo Island, April 19, five specimens.

***Junco insularis* Ridgway**

GUADALUPE JUNCO

Guadalupe Island, March 2, five specimens.

***Amphispiza bilineata deserticola* Ridgway**

DESERT SPARROW

Taken at nearly all points visited by the expedition including San Esteban, Carmen, Santa Catalina, Santa Cruz, and Espiritu Santo islands.

***Melospiza lincolni lincolni* (Audubon)**

LINCOLN'S SPARROW

Tiburon Island, April 12.

***Pipilo maculatus magnirostris* Brewster**

LARGE-BILLED TOWHEE

San Bernardo Mountain, May 14.

***Pipilo fuscus albigula* Baird**

SAN LUCAS TOWHEE

San Bernardo Mountain, May 10, Miraflores, May 7-10.

***Pipilo fuscus jamesi*, new subspecies**

TIBURON ISLAND TOWHEE

SUBSPECIFIC CHARACTERS.—Smaller than *P. f. intermedius*, but bill and feet larger; coloration similar but paler throughout; chin, throat, breast and abdomen paler; upper parts and flanks much more ashy, ear coverts slightly ashier; anal and femoral regions and under tail-coverts decidedly less tawny; crown lighter rufous.

Aver. of 2 ♀.—Length (skin), 198. Wing, 88. Tail, 92. Culmen, 15. Tarsus, 24. Middle-toe, 25.

Aver. of 2 ♂.—Length (skin), 197. Wing, 90. Tail, 89. Culmen, 16. Tarsus, 23. Middle-toe, 24.

TYPE.—No. 131,854, Amer. Mus. Nat. Hist., ♂ ad., Tiburon Island.

In general appearance of under parts this bird has more resemblance to *P. f. albigula*, the Lower California form, than to *intermedius* of the adjacent Sonoran mainland, but is paler than either. The Tiburon birds were compared with specimens from Guaymas, taken March 3 to 23. Tiburon Island, April 12, 13. 4 specimens.

Named for Mr. Arthur Curtiss James of New York.

***Oreospiza chlorura* (J. K. Townsend)**

GREEN-TAILED TOWHEE

Specimens were taken at Cape San Lucas, March 24 and La Paz, March 29. It was observed also at Tiburon Island.

***Cardinalis cardinalis igneus* Baird**

SAN LUCAS CARDINAL

Found by the expedition in the Cape region where it is common and as far north as Concepcion Bay. Specimens were taken also at Carmen Island.

***Cardinalis cardinalis affinis* Nelson**

ALAMOS CARDINAL

The single specimen of this genus, a female, secured at Tiburon Island on April 12 is tentatively referred to *affinis*, but appears to be smaller with larger feet.

***Pyrhuloxia sinuata peninsulæ* Ridgway**

SAN LUCAS PYRRHULOXIA

This bird was found by our party only at the extreme lower end of the peninsula, being taken at Cape San Lucas on March 23 and 24 and at San Jose del Cabo on March 26, seven specimens.

***Zamelodia melanocephala* (Swainson)**

BLACK-HEADED GROSBEEK

Cape San Lucas, March 24, Agua Verde Bay, April 12, Concepcion Bay, April 2, and Miraflores, May 10, six specimens.

***Passerina amoena* (Say)**

LAZULI BUNTING

Concepcion Bay, April 7. Observed at San Francisquito Bay, April 9, and at Tiburon Island, April 13.

***Passerina versicolor pulchra* Ridgway**

BEAUTIFUL BUNTING

Miraflores, May 7 and 17, San Bernardo Mountain, May 14, six specimens.

***Calamospiza melanocorys* Stejneger**

LARK BUNTING

Cerros Island, March 11, Santa Margarita Island, March 20, and Cape San Lucas, March 23, seven specimens.

The record for Cerros Island indicates an extension of its known range. It was observed at Carmen and Tiburon islands.

Tachycineta thalassina brachyptera Brewster

SAN LUCAS SWALLOW

San Jose del Cabo, March 25 and 26, Agua Verde Bay, April 2, San Francisquito Bay, April 9, Espiritu Santo Island, April 18, 13 specimens.

Phainopepla nitens (Swainson)

PHAINOPEPLA

Obtained at Agua Verde Bay, April 1 and 2, Tiburon Island, April 12, and Miraflores, May 7, 11 specimens.

Although known to be common in many parts of the peninsula, we did not see it except at the points mentioned.

Lanius ludovicianus gambeli Ridgway

CALIFORNIA SHRIKE

Shrikes were taken at Cape San Lucas, March 24, San Jose del Cabo, March 25, and Angel Guardia Island, April 11. They were observed also at Tiburon Island.

Vireosylva gilva swainsoni (Baird)

WESTERN WARBLING VIREO

Miraflores, April 25 and May 17 and San Bernardo Mountains, May 13, seven specimens.

Lanivireo solitarius lucasanus (Brewster)

SAN LUCAS VIREO

Same localities and dates as preceding, eight specimens.

Vireo belli pusillus Coues

LEAST VIREO

Santa Cruz Island, April 16.

Vermivora celata lutescens (Ridgway)

LUTESCENT WARBLER

Santa Margarita Island, March 17 and 18 and Cape San Lucas, March 23.

Dendroica bryanti castaneiceps Ridgway

MANGROVE WARBLER

Santa Maria Bay, March 17 and 18, La Paz, March 27, and San Jose del Cabo, March 25, six specimens.

This warbler is common among the mangroves at Santa Maria Bay.

Dendroica auduboni auduboni (J. K. Townsend)

AUDUBON'S WARBLER

Cerros Island, March 12, and at sea, north of Guadalupe Island,
April 25.

Dendroica nigrescens (J. K. Townsend)

BLACK-THROATED GRAY WARBLER

Concepcion Bay, April 8.

Seiurus noveboracensis notabilis Ridgway

GRINNELL'S WATER THRUSH

Magdalena Bay, March 21.

Geothlypis trichas arizela Oberholser

PACIFIC YELLOW-THROAT

Magdalena Bay, March 20 and 21.

Geothlypis beldingi Ridgway

BELDING'S YELLOW-THROAT

San Jose del Cabo, March 24 and 25 and Miraflores, May 5 and 9,
six specimens.

Wilsonia pusilla pileolata (Pallas)

PILEOLATED WARBLER

At sea, north of Guadalupe Island, April 25.

Anthus rubescens (Tunstall)

AMERICAN PIPIT

San Jose del Cabo, March 26 and Carmen Island, April 3.

Oreoscoptes montanus (J. K. Townsend)

SAGE THRASHER

San Bartolome Bay, March 13, four specimens.

Mimus polyglottos leucopterus (Vigors)

WESTERN MOCKINGBIRD

Specimens were taken at Cerros Island, March 11, Magdalena Bay,
March 19, Cape San Lucas, March 23 and 24, La Paz, March 27 and 30,
and at Agua Verde Bay, April 2.

The mockingbird was observed also at Mulege, Concepcion Bay,
San Francisquito Bay, and Tiburon Island. It was fairly common
wherever met with.

Toxostoma bendirei (Coues)

BENDIRE'S THRASHER

Tiburon Island, April 3.

Toxostoma cinereum cinereum (Xantus)

SAN LUCAS THRASHER

Cape San Lucas, March 23, San Jose del Cabo, March 25, Agua Verde Bay, April 1 and 2, and Miraflores, May 9 and 10.

Heleodytes brunneicapillus affinis (Xantus)

SAN LUCAS CACTUS WREN

Cape San Lucas, March 23, San Jose del Cabo, March 25 and 26, La Paz, March 29 and April 19, Agua Verde Bay, April 1 and 2, and Miraflores, May 19.

Heleodytes brunneicapillus brunneicapillus (Lafresnaye)

GUAYMAS CACTUS WREN

Tiburon Island, April 12.

Salpinctes obsoletus obsoletus (Say)

ROCK WREN

San Benito Islands, March 9 and Magdalena Bay, March 21.

Salpinctes obsoletus guadeloupensis Ridgway

GUADALUPE ROCK WREN

Guadalupe Island, March 2, ten specimens.

Catherpes mexicanus polioptilus Oberholser

INTERMEDIATE CANYON WREN

Espiritu Santo Island, April 18 and 19.

Thryomanes bewickii cerroensis (Anthony)

CERROS ISLAND WREN

Cerro Island, March 12, three specimens.

Telmatodytes palustris plesius (Oberholser)

WESTERN MARSH WREN

San Francisquito Bay, April 10.

Auriparus flaviceps lamprocephalus Oberholser

CAPE VERDIN

Magdalena Bay, March 19 and 21, Cape San Lucas, March 23 and 24, La Paz, March 30, Agua Verde Bay, April 2, Concepcion Bay, April

6 and 7, Angel Guardia Island, April 11, Ceralbo Island, April 19, Miraflores, May 10 and 11, and Tiburon Island, April 12.

A nest and two eggs were taken at Cape San Lucas on March 23, and a nest with three eggs at Tiburon Island, April 12, the eggs on the latter date being at the point of hatching.

***Polioptila caerulea obscura* Ridgway**

WESTERN GNATCATCHER

Specimens were taken at La Paz, March 29 and 30, Agua Verde Bay, April 12, Concepcion Bay, April 9, Ceralbo Island, April 19, Miraflores, May 8.

It was observed also at Mulege and Santa Catalina Island, and was rather common at most of the localities where it was found.

***Polioptila plumbea* (Baird)**

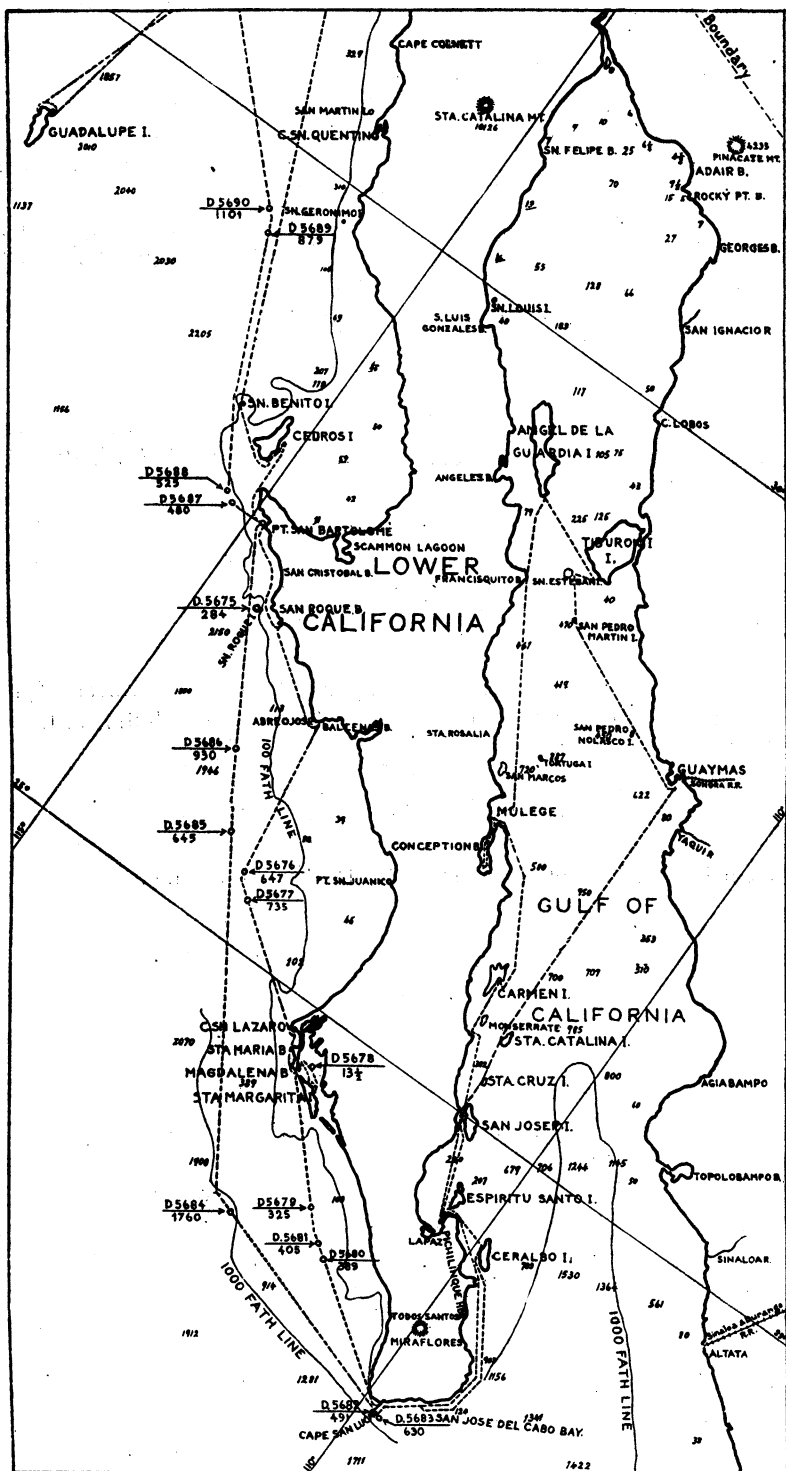
PLUMBEOUS GNATCATCHER

Santa Margarito Island, March 19, Cape San Lucas, March 24, San Jose del Cabo, March 26, La Paz, March 29 and 30, and Tiburon Island, April 12.

***Planesticus confinis* (Baird)**

SAN LUCAS ROBIN

San Bernardo Mountain, May 12-15, three specimens.



MAP OF THE LOWER CALIFORNIA REGION
SHOWING ROUTE OF THE ALBATROSS EXPEDITION IN 1911
UNDER THE DIRECTION OF G.H. TOWNSEND