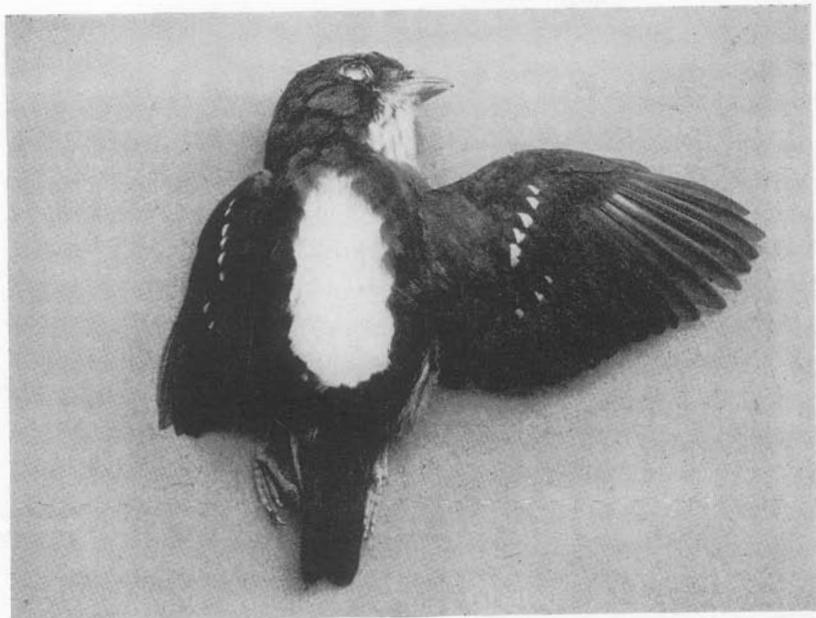
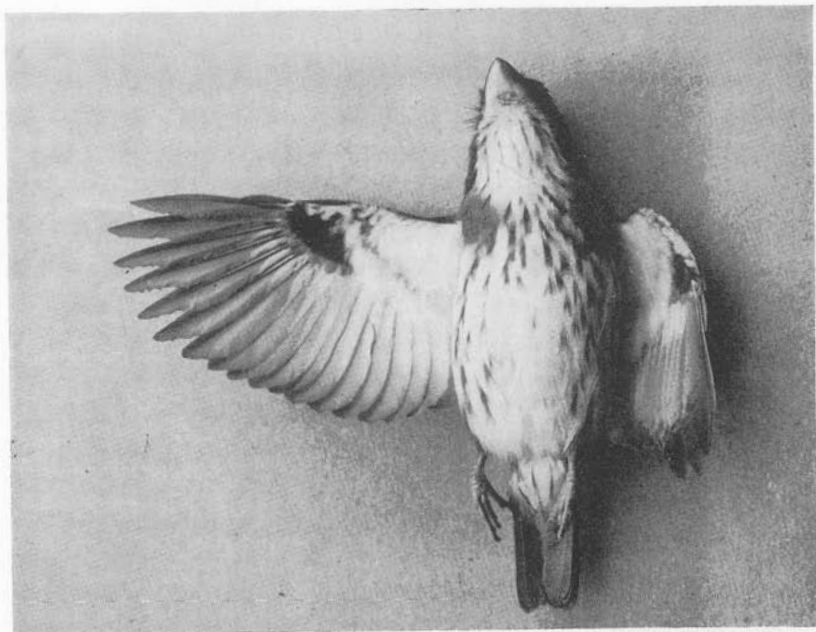


PLATE 1

1. Adult male *Smithornis rufolateralis*, showing white dorsal patch, often exposed in display. Lukolela, Congo River, September 8, 1930.
2. The same bird from beneath, to show stiffened primaries with inner webs narrowing toward their bases.



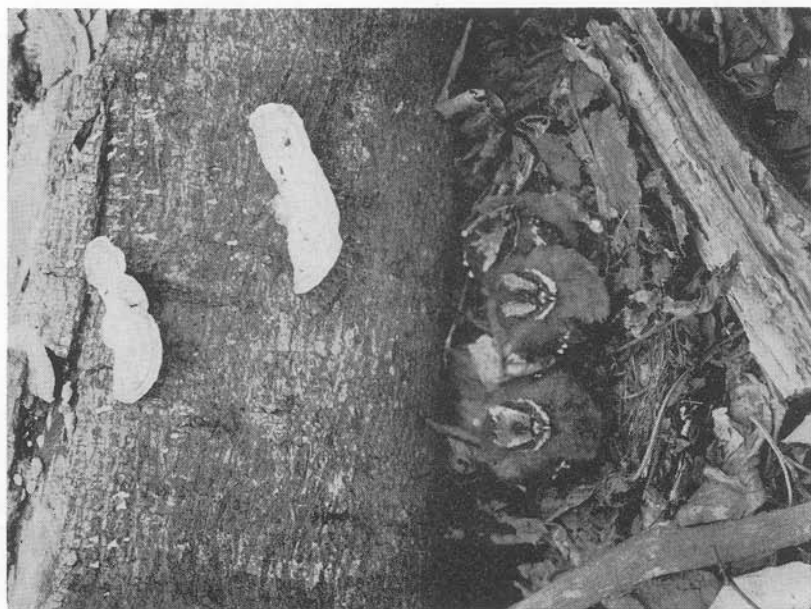
1



2

PLATE 2

1. Nest of *Smithornis rufolateralis* suspended in a small tree in forest undergrowth. Lukolela, September 6, 1930.
2. Three young of *Pitta reichenowi* on forest floor, shortly after quitting the nest. Medje, northern Ituri District, September 17, 1910.



2



1



PLATE 3

African pied wagtails, *Motacilla aguimp vidua*, in post of Faradje, Upper Uelle District, July, 1911.



1



2



3

PLATE 4

1. Nest of the yellow-throated long-claw, *Macronyx c. croceus*, with three nestlings, in field of grass at Faradje, Uelle District, November 16, 1912.

2. Female bulbul, *Pyrhurus scandens orientalis*, in captivity. Niangara, Uelle District, June 15, 1913.



1



2

PLATE 5

1. Nest of the rufous-faced grass warbler, *Cisticola erythrops sylvia*, sewn with silk between broad leaves of a herbaceous plant. Faradje, Uelle District, August 21, 1912.
2. Nest of a small grass warbler, *Cisticola b. brachyptera*, supported in a green plant and well hidden amid tall grasses. Faradje, November 22, 1912.



1



2

#### PLATE 6

1. A leafy stalk of *Aframomum* with a nest of *Prinia subflava immutabilis* sewn between two of the leaves on the right side. Faradje, Uelle District, October 14, 1912.
2. Another nest of the same warbler, supported in same way, Faradje, October, 1912.



2



1



PLATE 7

1. Nest of *Prinia subflava immutabilis* sewn between grass blades. Faradje, October 14, 1912.
2. A nest of the same *Prinia* sewn between leaves of a thistle. Faradje, October, 1912.



2



1

PLATE 8

1. Nest and eggs of the red-wattled flycatcher, *Platysteira cyanea nyansae*. Faradje, Uelle District, March 30, 1911.

2. Nest of the white-fronted chat, *Pentholaea albifrons clericalis*, with three nestlings. It was placed on ground near a tree in a burned spot and is seen here a little to right of center of picture. Faradje, February 1, 1912.



1



2

PLATE 9

A fisherman at Kassa, on the middle Congo River, holding four river martins (*Pseudochelidon eurystomina*) knotted together by their wing quills. He had caught them in nests the preceding night. February 10, 1931.

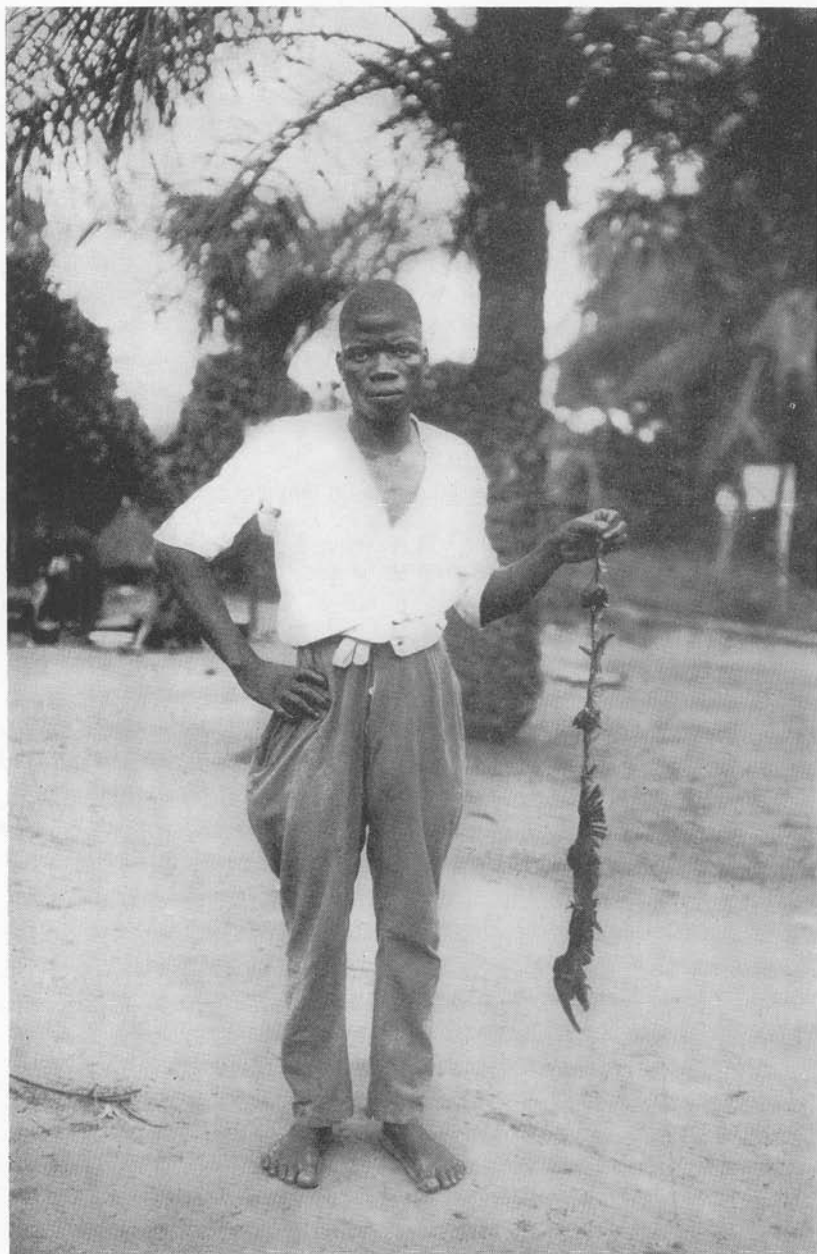
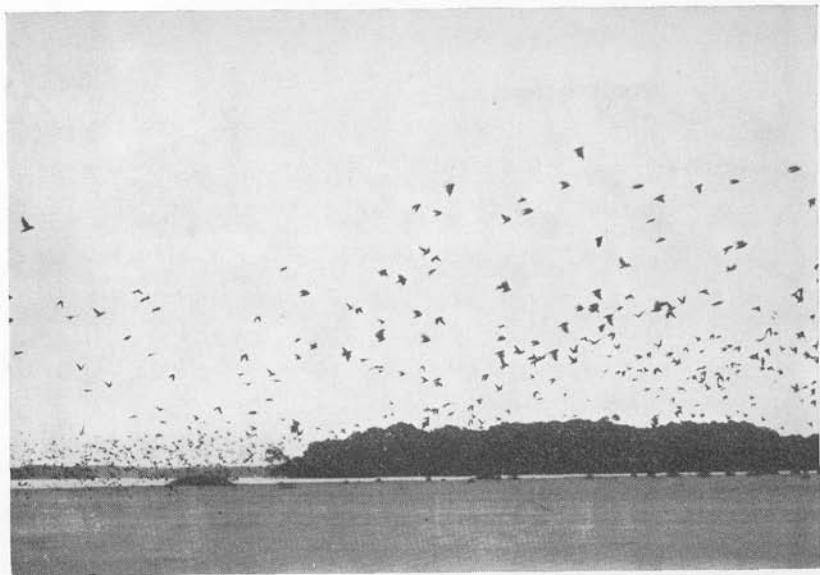


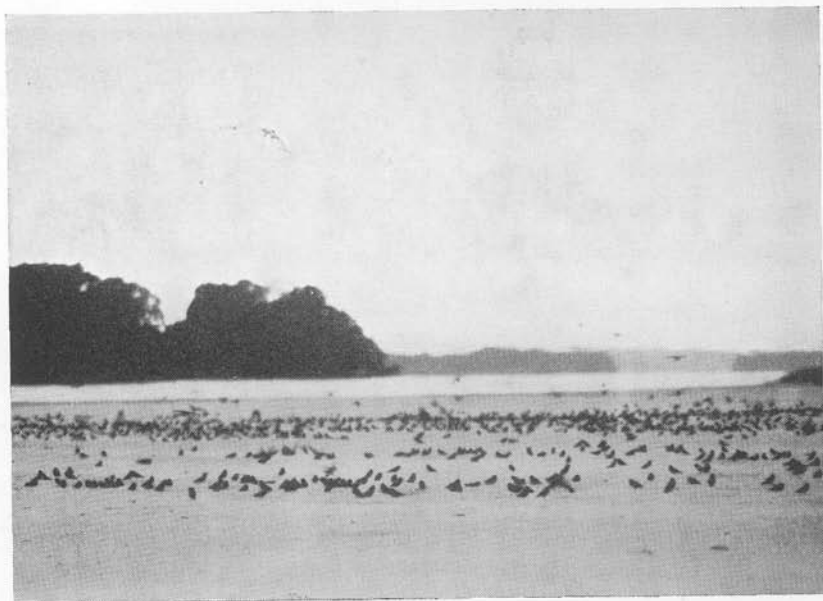
PLATE 10

1. River martins (*Pseudochelidon eurystomina*) flying over one of their nesting colonies on a sand bar in the Congo River near Lukolela, March 22, 1931.

2. Another view in the same colony of river martins, as the birds rested on the sand near their nests.



1



2



PLATE 11

1. River martins (*Pseudochelidon*) at their nest tunnels in a sand bar near Lukolela, middle Congo River, March 29, 1931.

2. Entrances of nest tunnels of *Pseudochelidon* in a crowded colony near Lukolela, March 29, 1931.



1



2

PLATE 12

One of many sand bars exposed in the middle Congo River near Sungu, February 10, 1931. On this bar *Pseudochelidon*, *Pseudhirundo griseopyga*, and *Riparia congica* all nested in holes.



PLATE 13

Nesting site of bank swallows, *Riparia congica*, on the edge of a wooded sand bar in the Congo River near Sungu. The row of tunnels can be seen in a very slight declivity halfway up the beach. February 10, 1931.

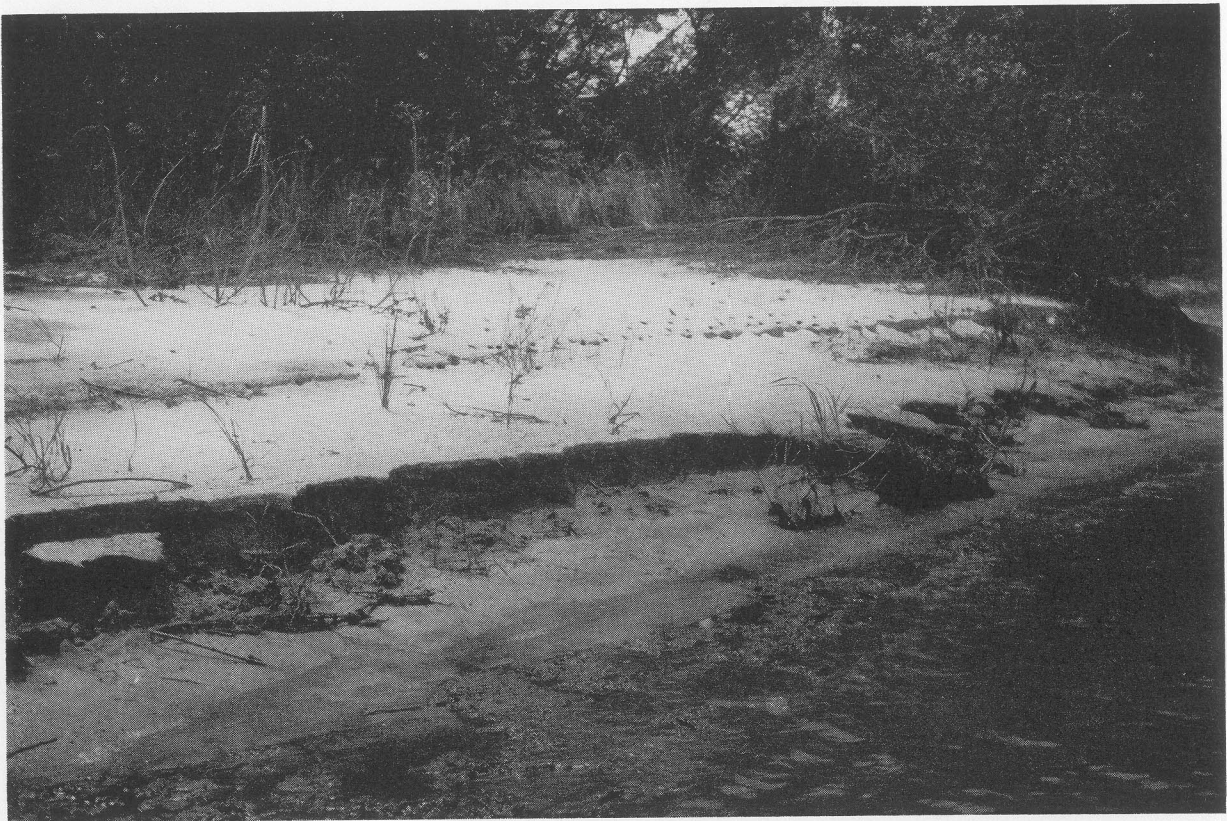
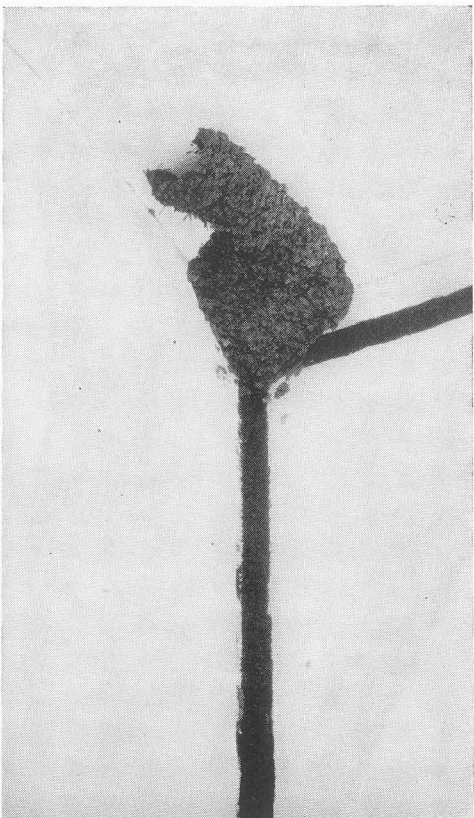
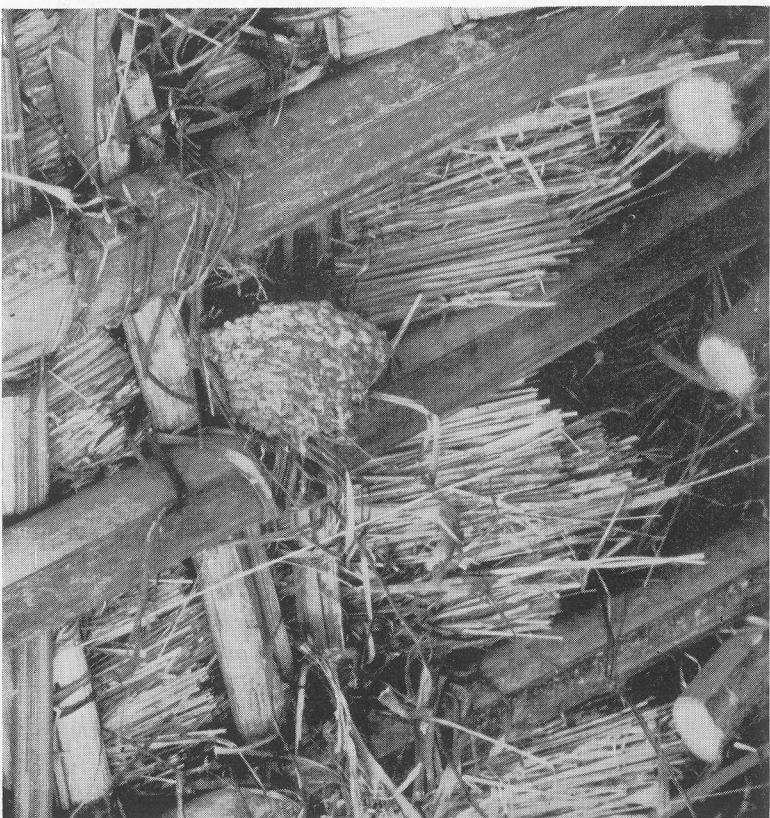


PLATE 14

1. Bowl-shaped mud nest of the wire-tailed swallow, *Hirundo s. smithii*, attached to rafters beneath a thatched roof at Faradjé, Uelle District, October 29, 1912.
2. Freshly built nest of *Cecropis abyssinica unilatis* in the angle between walls and ceiling of a European house, Coquilhatville, Congo River, March 11, 1931.



2



1