

PLATES LXXIX TO CLXVII

PLATE LXXIX

Perodicticus potto faustus Thomas

Male adult, Amer. Mus. No. 52687, Avakubi, October 26, 1909. Total length of animal, 332 mm. Live animal.

Figs. 1 and 2. Habitual positions when climbing or resting in trees.



1



2

PLATE LXXX

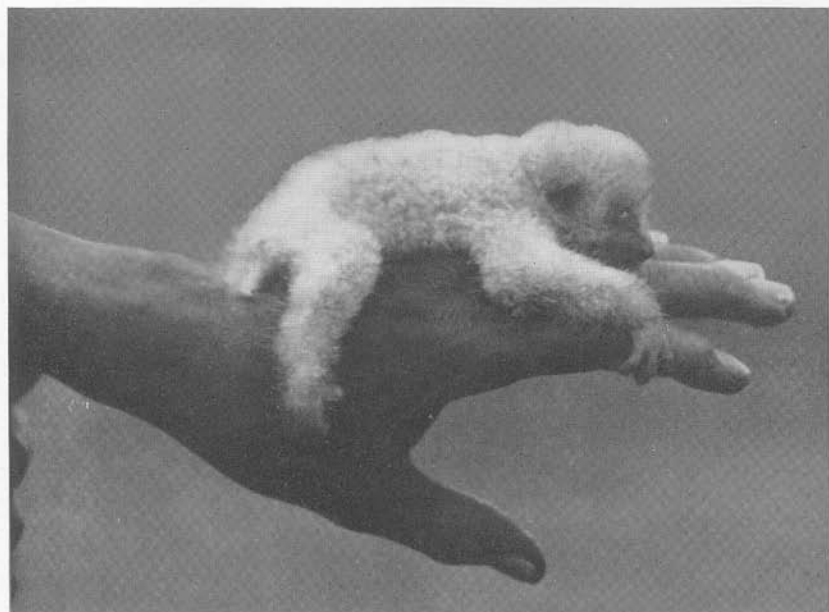
Perodicticus potto faustus Thomas

Fig. 1. Male adult, Amer. Mus. No. 52687, Avakubi, October 26, 1909. Total length of animal, 332 mm. Showing its awkward manner of progressing on the ground.

Fig. 2. Male juvenile, Amer. Mus. No. 51023, Medje, April 23, 1914. Total length of animal, 155 mm. Clinging to a native's hand as it clings to its mother's back. Live animals.



1



2

PLATE LXXXI

Galagoides demidoffi medius (Thomas)

Fig. 1. Female adult, Amer. Mus. No. 50968, Medje, March 24, 1914. Total length of animal, 314 mm. Specimen in the flesh. Lateral view showing general body proportions.

Figs. 2 and 3. Same, side and front views of head. The ridges where the ear is folded are visible.

Fig. 4. Male juvenile, Amer. Mus. No. 50970, Medje, March 24, 1914. Total length of animal, 175 mm. Live animal.



PLATE LXXXII

Papio doguera heuglini Matschie

Male adult, Amer. Mus. No. 52676, Bafuka, April 1, 1913. Total length of animal, 1270 mm. Specimen in the flesh.

Figs. 1 and 2. Side and front views of head.

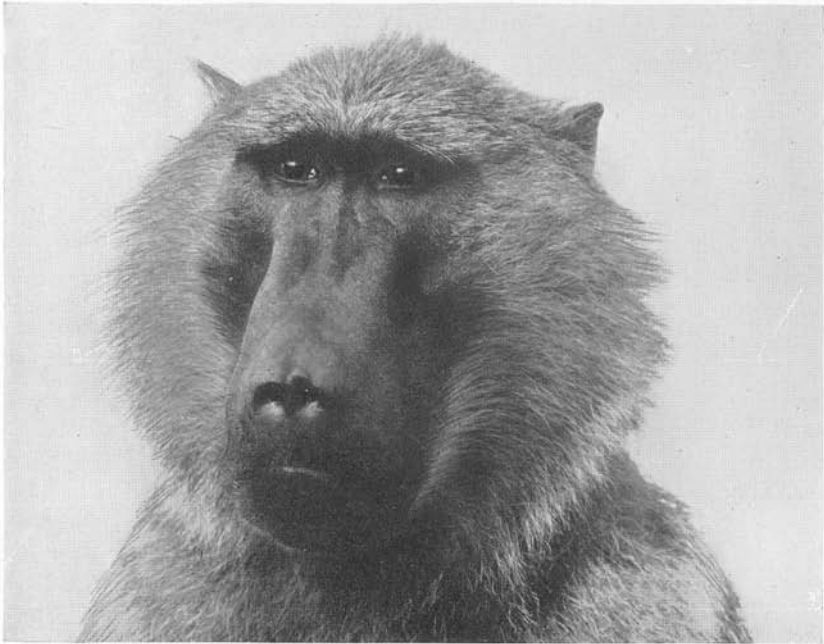


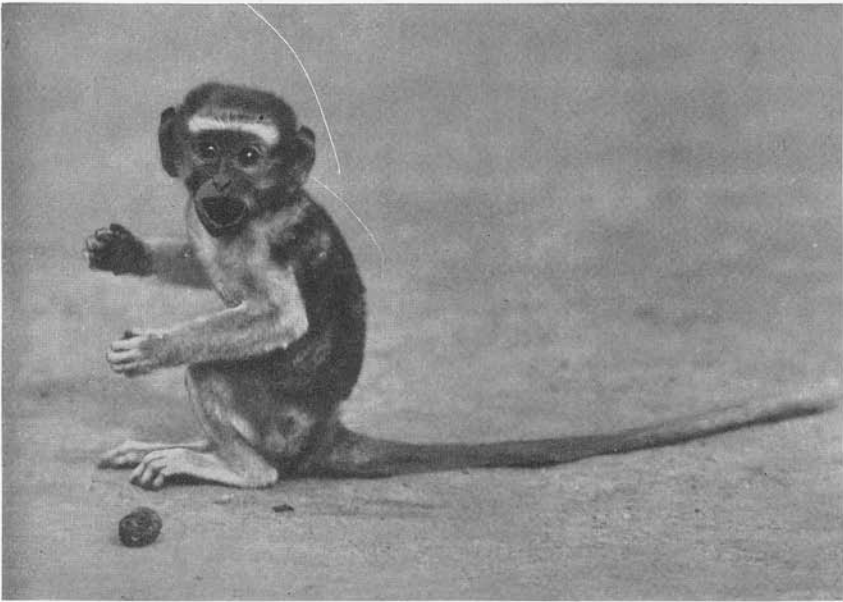
PLATE LXXXIII

Fig. 1. *Papio doguera tessellatus* Elliot. Male juvenile, Amer. Mus. No. 52669, Akenge, October 2, 1913. Total length of animal, 565 mm. Specimen in the flesh. Showing characteristics of baboons, the lengthened head, peculiar form of ears, large ischial callosities, and the habitual upward bend of the tail at its base.

Fig. 2. *Lasiopyga pygerythra griseisticta* (Elliot). Juvenile, Faradje, May 1911. Live animal. Feeding on guava, an introduced fruit, of which these monkeys are very fond.



1



2

PLATE LXXXIV

Cercocebus agilis Rivière

Fig. 1. Male adult, Amer. Mus. No. 52634, Akenge, September 28, 1913. Total length of animal, 1280 mm. Showing general body proportions. The roughened hair on the tail is an indication of the use they make of the tail to secure better hold in certain positions by winding it half or quarter way round the branches.

Fig. 2. Female juvenile, Amer. Mus. No. 52638, Akenge, October 4, 1913. Total length of animal, 565 mm. The young have the hair on the tail smooth. Specimens in the flesh.



1



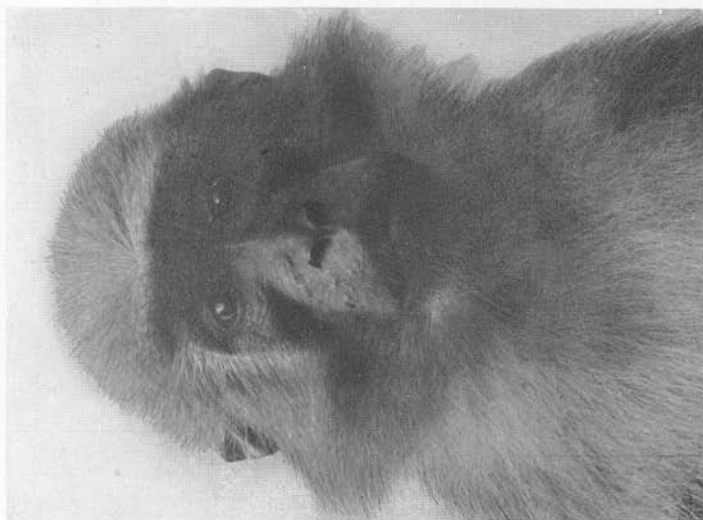
2

PLATE LXXXV

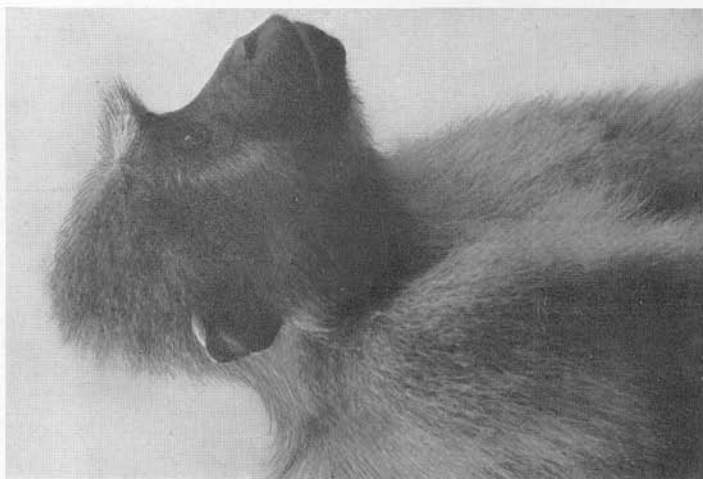
Cercocebus agilis Rivière

Male adult, Amer. Mus. No. 52634, Akenge, September 28, 1913. Total length of animal, 1280 mm. Specimen in the flesh.

Figs. 1, 2, and 3. Front, side, and three-quarter views of head. Same animal shown on Pl. LXXXIV, fig. 1.



1



2



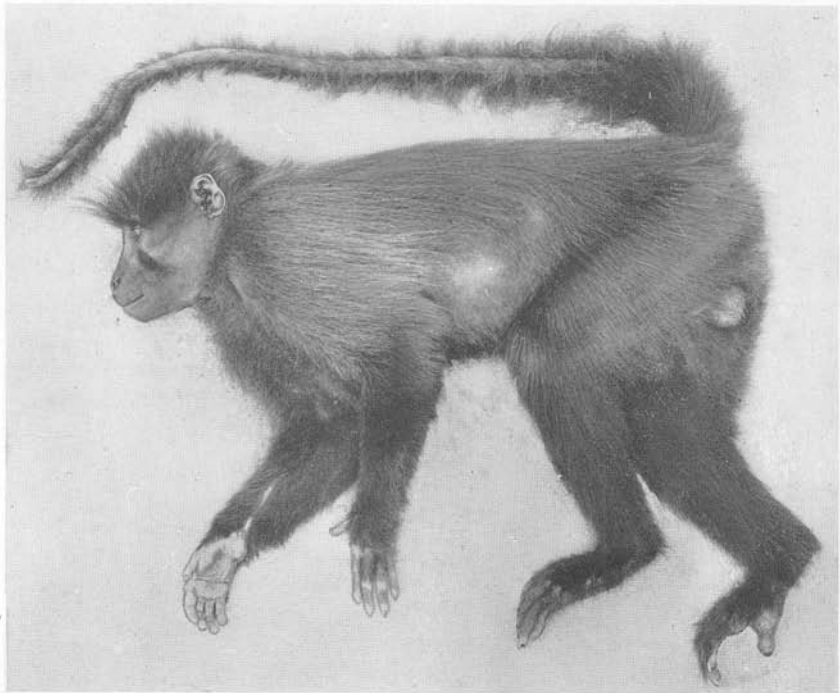
3

PLATE LXXXVI

Cercocebus albigena ituricus Matschie

Fig. 1. Male adult, Amer. Mus. No. 52619, Avakubi, August 22, 1914. Total length of animal, 1365 mm. Showing general body proportions. This monkey makes extensive use of its tail in climbing, as shown by the worn condition of the hair. Though the tail is not in any way prehensile, having no hairless tactile pads on its under side, as in some South American primates, it is often wrapped around branches in a semi-spiral manner to assist in securing a firmer hold in certain positions.

Fig. 2. Male juvenile, Amer. Mus. No. 52608, Akenge, October 6, 1913. Total length of animal, 570 mm. The relatively heavy tail is an indication of the increase of the muscular and sinewy attachments along the vertebræ which are used for climbing in later life. The hair of the tail in young specimens is quite smooth. Specimens in the flesh.



1



2

PLATE LXXXVII

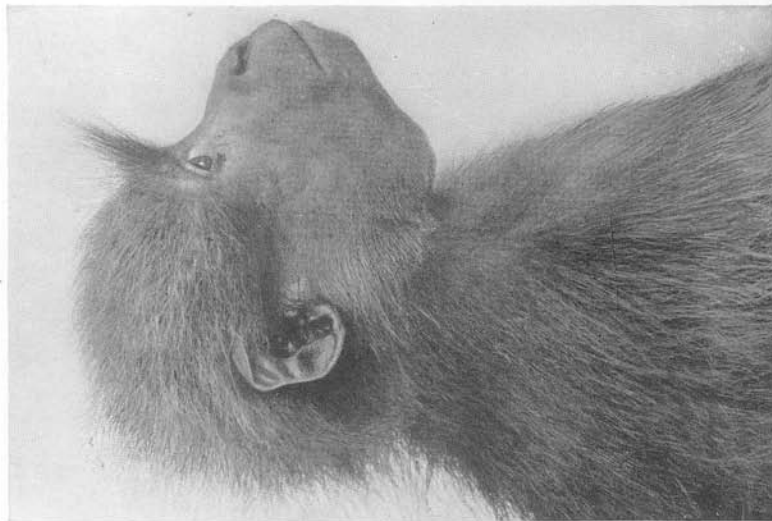
Cercocebus albigena ituricus Matschie

Female adult, Amer. Mus. No. 52597, Akenge, September 29, 1913. Total length of animal, 1300 mm. Specimen in the flesh.

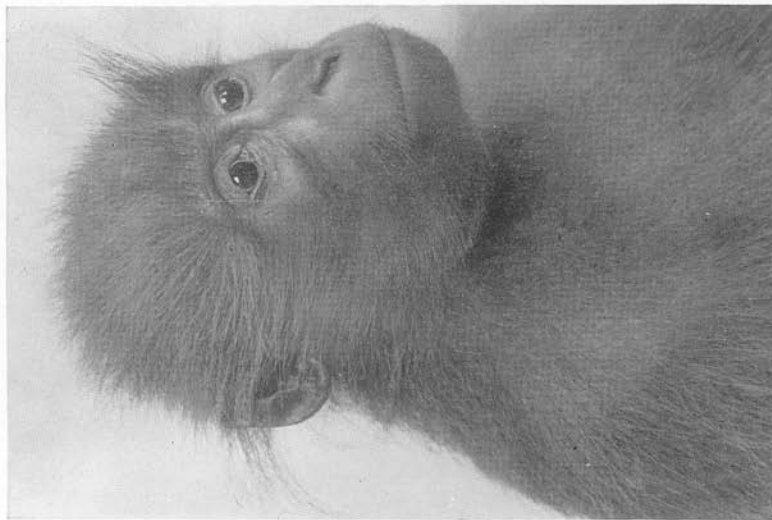
Figs. 1, 2 and 3. Front, side, and three-quarter views of head. The superciliary tufts are more strongly developed in males.



1



2



3

PLATE LXXXVIII

Cercocebus aterrimus (Oudemans)

Male subadult, Amer. Mus. No. 52630, Stanleyville, November 1914. Total length of animal, 820 mm. Specimen in the flesh.

Figs. 1, 2 and 3. Front, side, and three-quarter views of head. The hairy, occipital crest can be moved slightly.



1



2

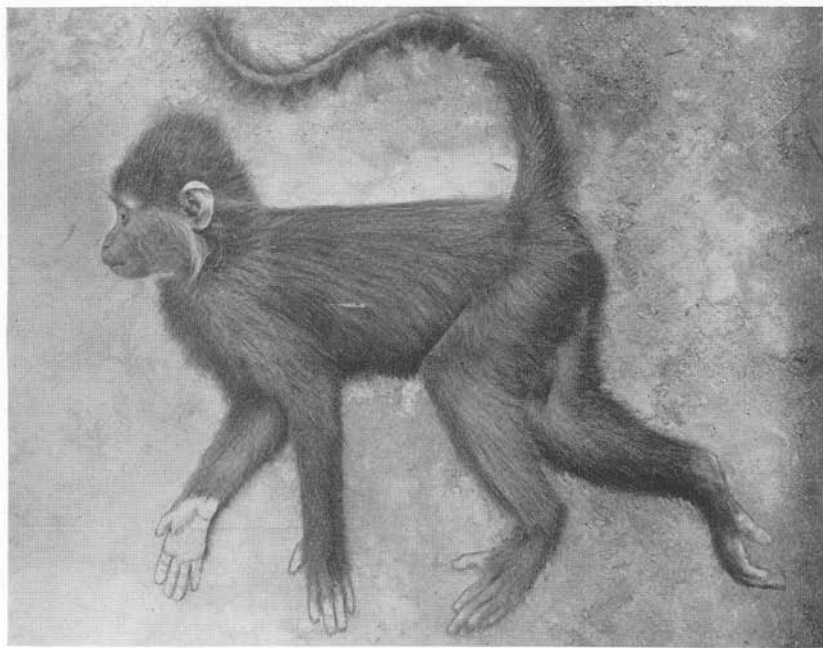


3

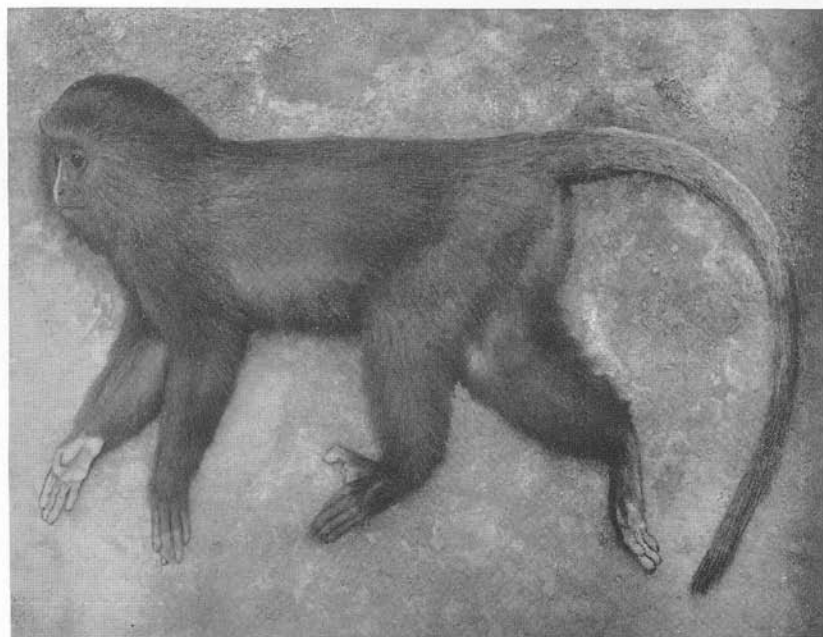
PLATE LXXXIX

Fig. 1. *Cercocebus aterrimus* (Oudemans). Male subadult, Amer. Mus. No. 52630, Stanleyville, November 1914. Total length of animal, 820 mm. Showing general body proportions. This specimen also shows that in the genus *Cercocebus* the tail is used as a rudimentary prehensile organ.

Fig. 2. *Rhinostigma hamlyni* (Pocock). Female subadult, Amer. Mus. No. 52463, considerably south of Stanleyville, September 21, 1913. Total length of animal, 700 mm. Showing general body proportions. On account of its nocturnal habits, called by the natives the "Owl Monkey." Specimens in the flesh.



1



2

PLATE XC

Rhinostigma hamlyni (Pocock)

Female subadult, Amer. Mus. No. 52463, considerably south of Stanleyville, September 21, 1913. Total length of animal, 700 mm. Specimen in the flesh.

Figs. 1, 2, and 3. Front, side, and three-quarter views of head. The short rostrum, the peculiar white nose-streak from between the eyes to the mouth, and the long hair hanging over the sides of the head contribute greatly to the owl-like appearance of the face.



1



2



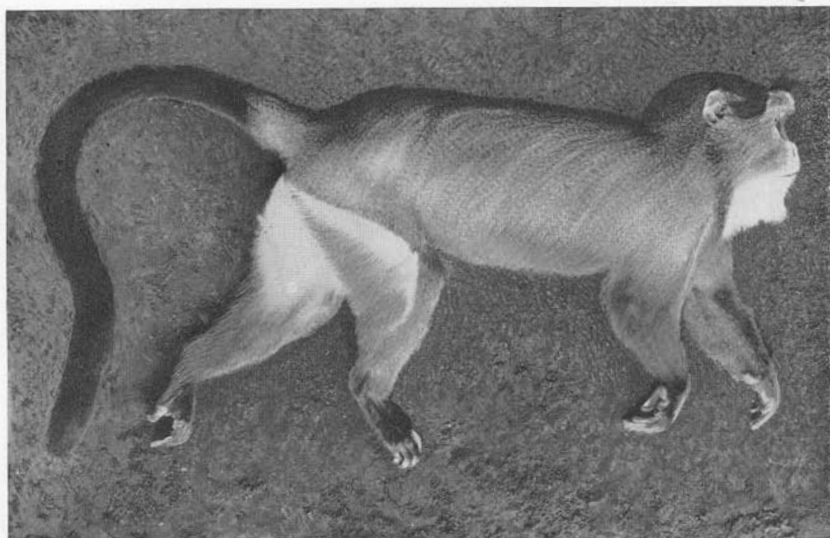
3

PLATE XCI

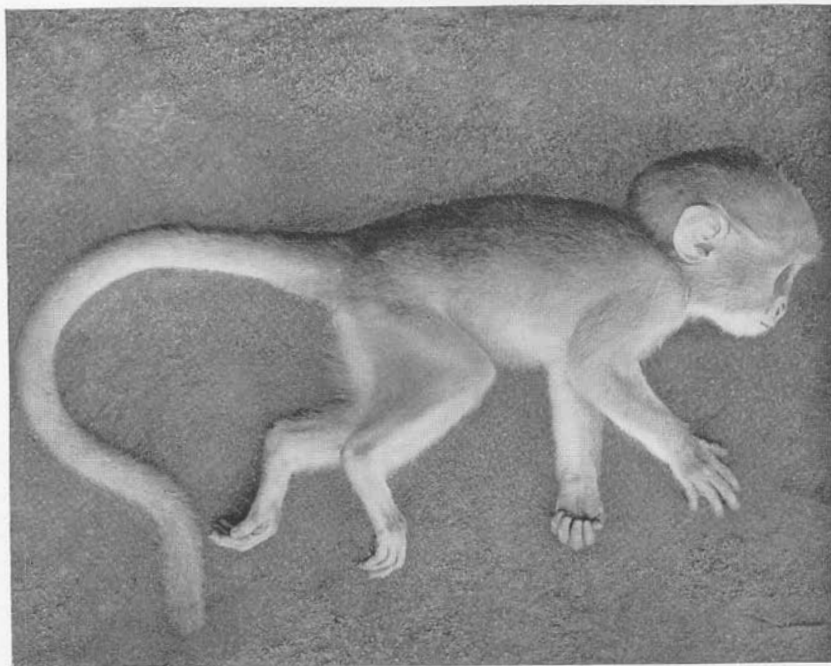
Lasiopyga brazzae uelensis (Lönnberg)

Fig. 1. Male adult, Amer. Mus. No. 52431, Niangara, April 10, 1913. Total length of animal, 1310 mm. Showing general body proportions as compared with the young male below.

Fig. 2. Male juvenile, Amer. Mus. No. 51025, Niangara, June 10, 1913. Total length of animal, 520 mm. Specimens in the flesh.



1



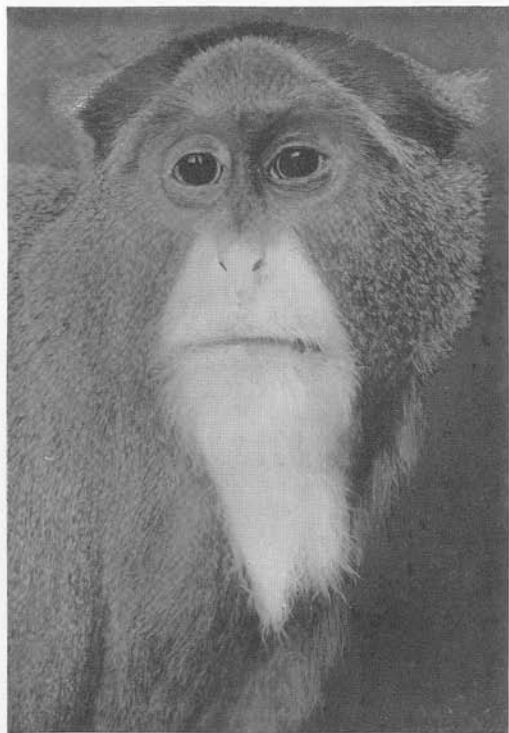
2

PLATE XCII

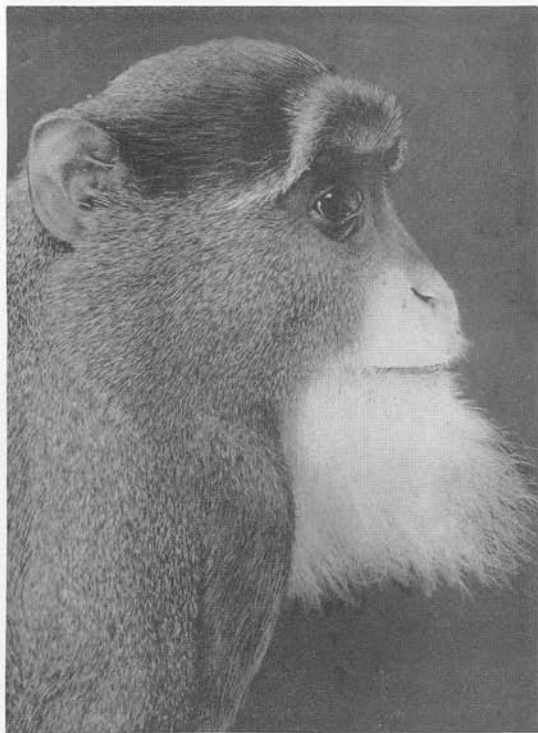
Lasiopyga brazzae uelensis (Lönnberg)

Figs. 1 and 2. Male adult, Amer. Mus. No. 52443, Niapu, December 7, 1913. Total length of animal, 1260 mm. Front and side views of head. The beard in this species is more highly developed in males.

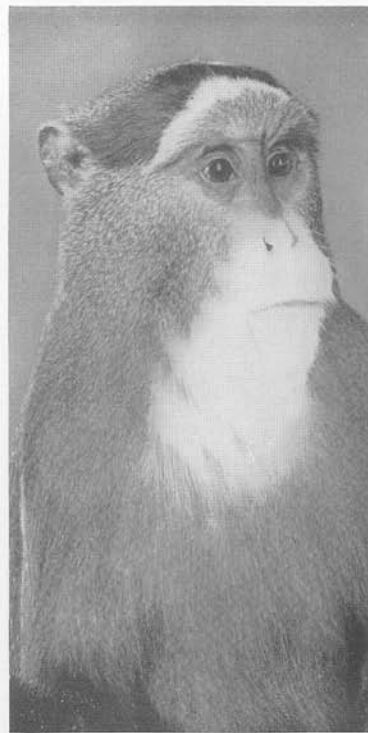
Fig. 3. Male adult, Amer. Mus. No. 52431, Niangara, April 10, 1913. Total length of animal, 1310 mm. Three-quarter view of head. The relative development of the light brow-band and the sharp demarcation of the dark crown-patch vary with the individual. Specimens in the flesh.



1



2



3

PLATE XCIII

Lasiopyga l'hæsti l'hæsti (Sclater)

Male adult, Amer. Mus. No. 52452, Babeyru, July 14, 1914. Total length of animal, 1300 mm. Specimen in the flesh.

Figs. 1, 2, and 3. Front, side, and three-quarter views of head.



1



2

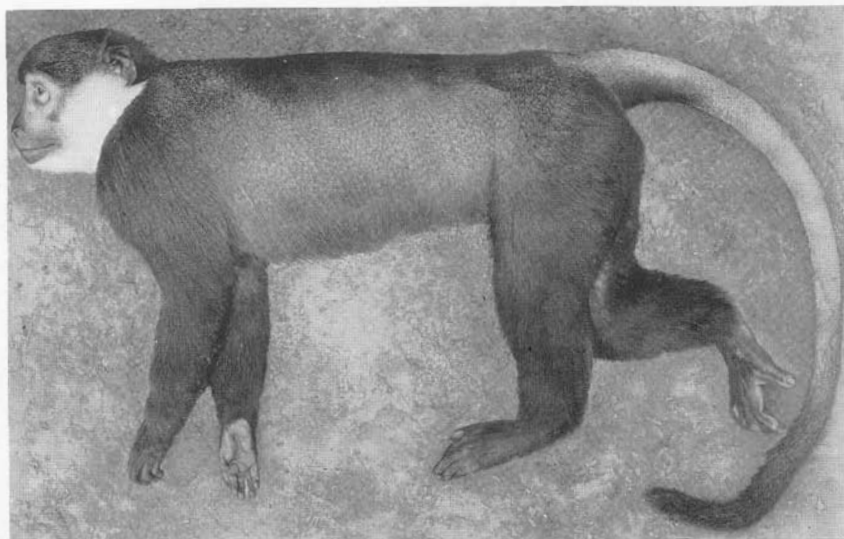


3

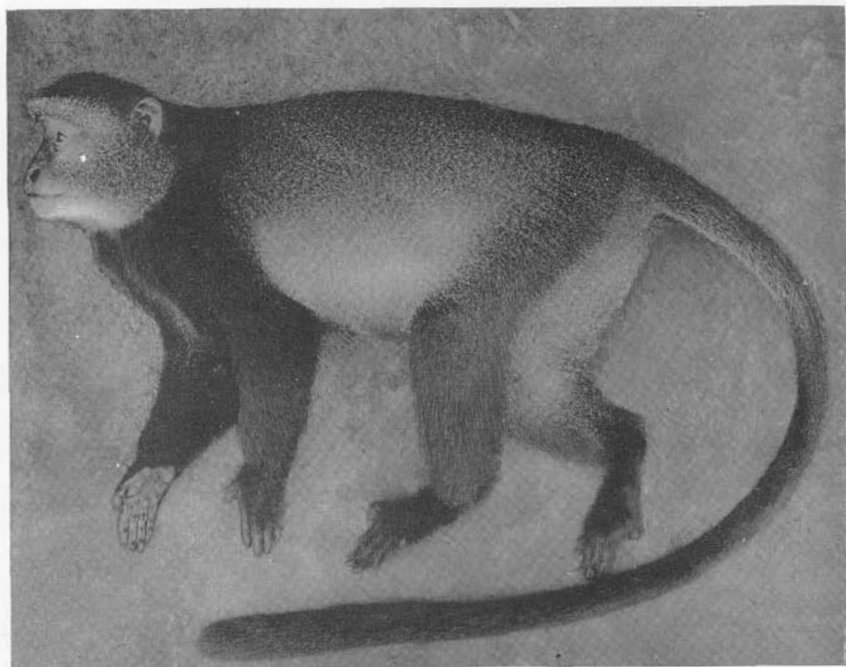
PLATE XCIV

Fig. 1. *Lasiopyga l'hæsti l'hæsti* (Sclater). Male adult, Amer. Mus. No. 52452, Babeyru, July 14, 1914. Total length of animal, 1300 mm. Showing general body proportions. This is one of the few partly terrestrial primates in the West African Rain Forest. Near native settlements it often plunders the rice fields.

Fig. 2. *Lasiopyga leucampyx stuhlmanni* (Matschie). Male adult, Amer. Mus. No. 52413, Niapu, January 29, 1914. Total length of animal, 1520 mm. One of the most common and well-furred monkeys of the forest of the northeastern Belgian Congo. Specimens in the flesh.



1



2

PLATE XCV

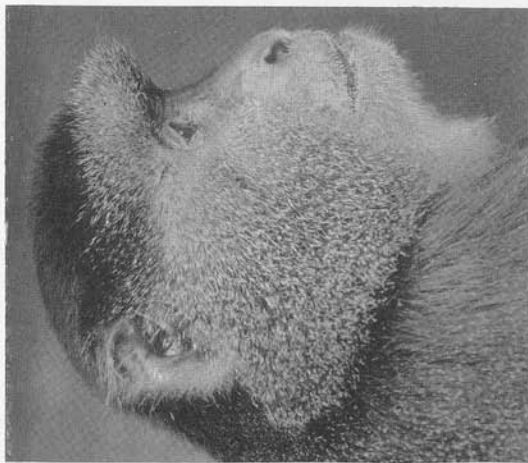
Lasiopyga leucampyx stuhlmanni (Matschie)

Female adult, Amer. Mus. No. 52349, Akenge, September 13, 1913. Total length of animal, 1194 mm. Specimen in the flesh.

Figs. 1, 2, and 3. Front, side, and three-quarter views of head.



1



2



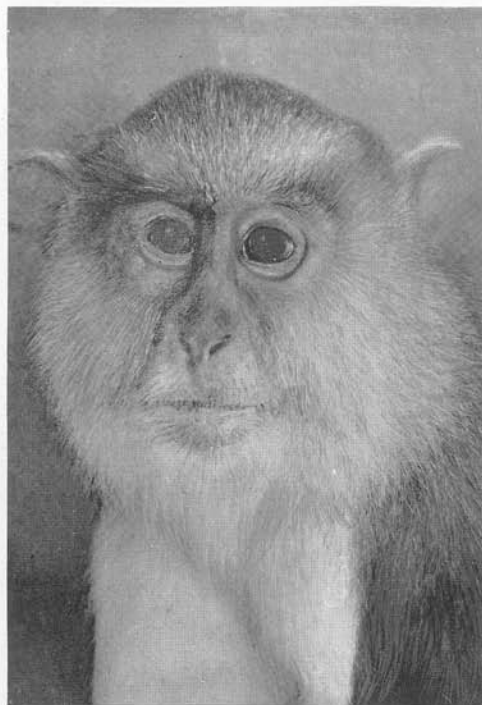
3

PLATE XCVI

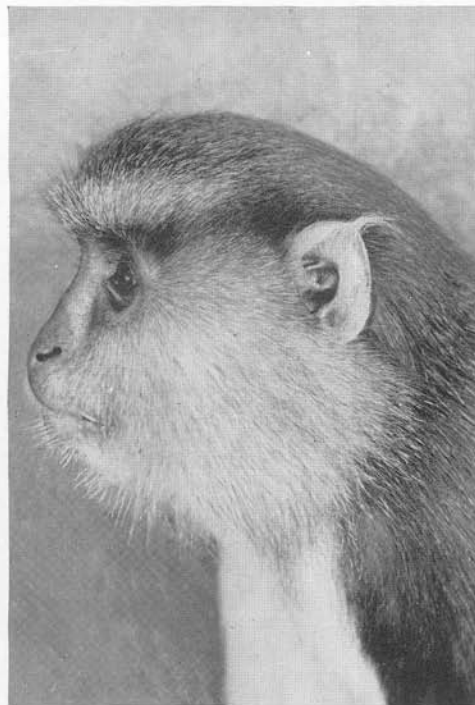
Lasiopyga denti (Thomas)

Male adult, Amer. Mus. No. 52524, Niapu, January 12, 1914. Total length of animal, 1320 mm. Specimen in the flesh.

Figs. 1, 2, and 3. Front, side, and three-quarter views of head. The peculiar, light, curved ear-tuft and sharply set-off white underside and flanks distinguish this monkey.



1



2

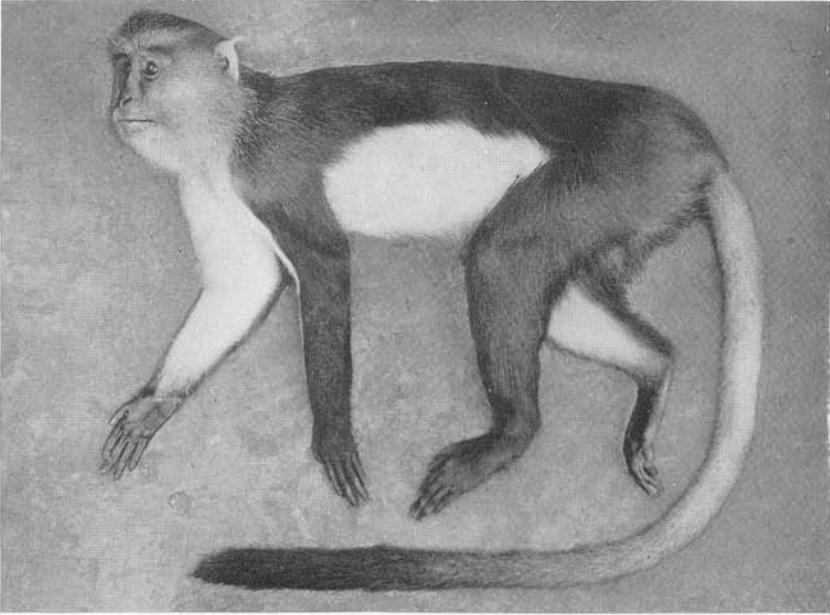


3

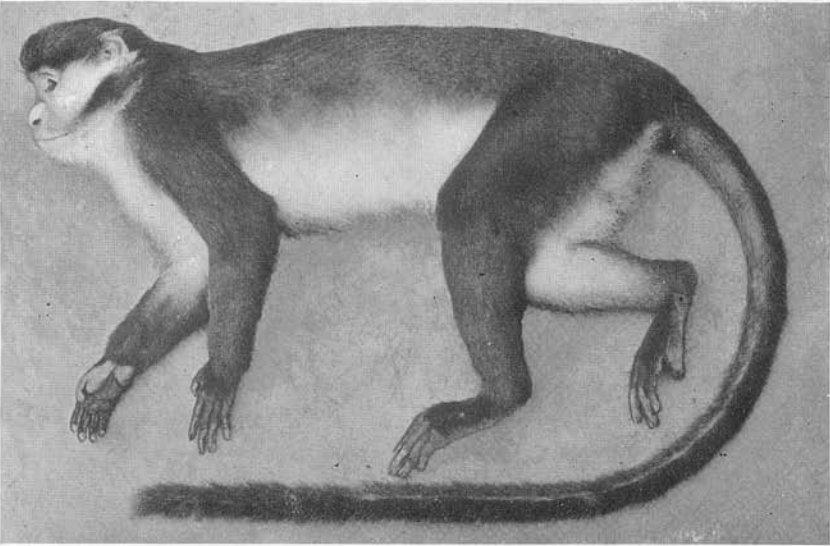
PLATE XCVII

Fig. 1. *Lasiopyga denti* (Thomas). Male adult, Amer. Mus. No. 52524, Niapu, January 12, 1914. Total length of animal, 1320 mm. Showing general body proportions.

Fig. 2. *Lasiopyga ascanius cirrhorhinus* (Matschie). Avakubi, August 1914. Besides the remarkable facial markings, the long, reddish tail makes this monkey conspicuous. Specimens in the flesh.



1



2

PLATE XCVIII

Lasiopyga ascanius cirrhorhinus (Matschie)

Figs. 1 and 2. Male adult, Niangara, June 1913. Front and side views of head. The white nose patch and the light, dark-edged whiskers, together with the bluish tint of the face, are truly remarkable features.

Fig. 3. Avakubi, August 1914. Three-quarter view of head. There is some slight individual variation in the color pattern of the face, as well as in the length of hair, especially in the whiskers. Specimens in the flesh.



1



2



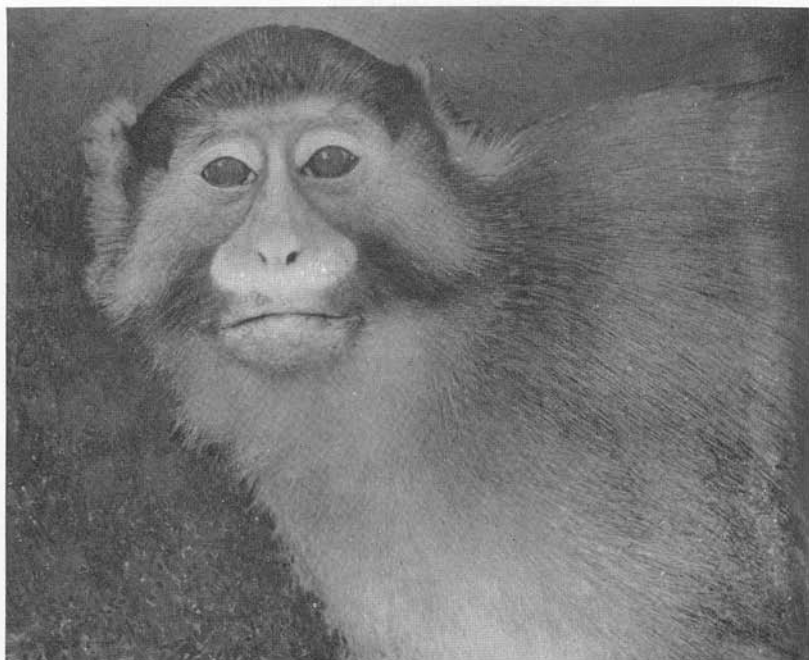
3

PLATE XCIX

Lasiopyga cephus (Linnæus)

Male adult, Amer. Mus. No. 52569. Zambezi, April 1915. Specimen in the flesh.

Figs. 1 and 2. Front and side views of head. In this form the peculiar pale yellow ear fringe, the considerably extended white nose patch, and the bluish face in life are the striking features. It has a gray underside and a partly red tail. Specimen in the flesh.



1



2

PLATE C

Lasiopyga pygerythra griseisticta (Elliot)

Male adult, Amer. Mus. No. 52478, Yakuluku, September 28, 1911. Total length of animal, 1015 mm. Specimen in the flesh.

Figs. 1, 2, and 3. Front, side, and three-quarter views of head. The black face and the long light whiskers turned up and back towards the ears are peculiar to this species that frequents partly forested Savannahs.



1



2



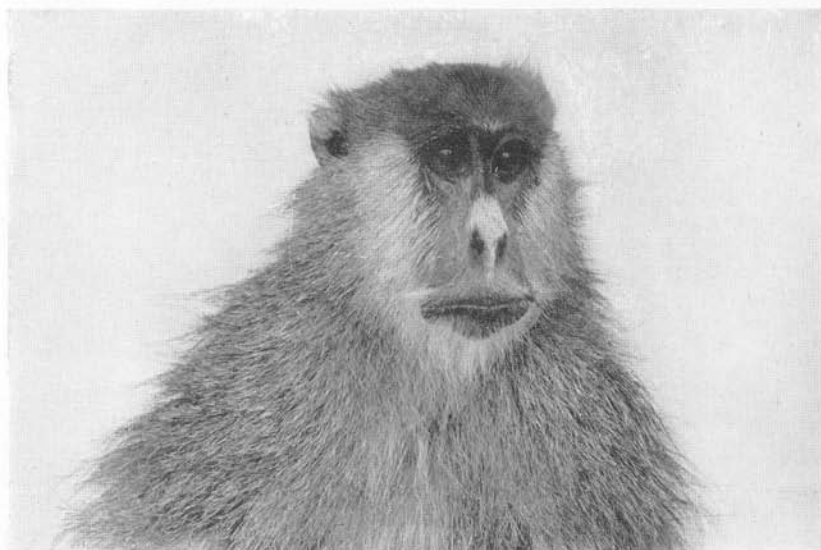
3

PLATE CI

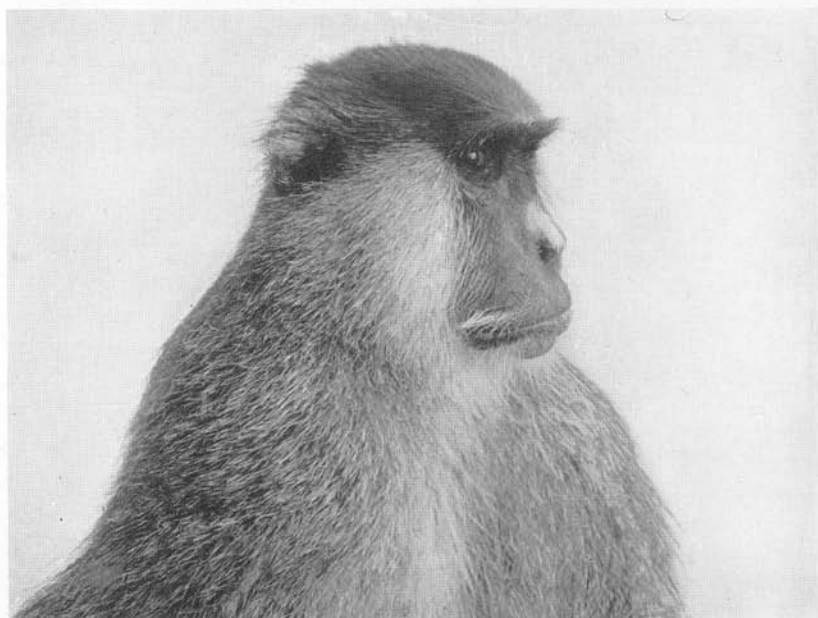
Erythrocebus patas pyrronotus (Hemprich and Ehrenberg)

Male adult, Amer. Mus. No. 52576, Faradje, April 4, 1911. Total length of animal, 1195 mm. Specimen in the flesh.

Figs. 1 and 2. Front and side views of head. The mane-like, long hair in adult males is particularly characteristic.



1



2

PLATE CII

Colobus langi, new species

Type skull, male adult, Amer. Mus. No. 52290, Risimu, September 8, 1909.
Greatest length of skull, 105.8 mm.

Fig. 1. Left lateral view; Fig. 2, dorsal view; Fig. 3, palatal view.

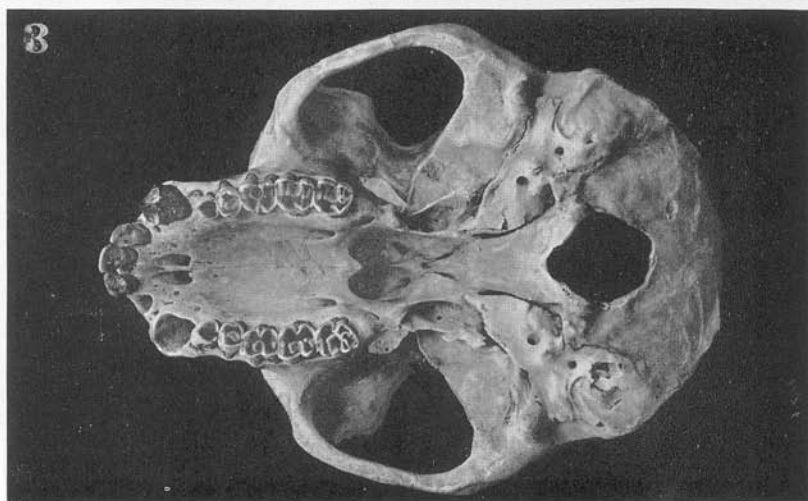
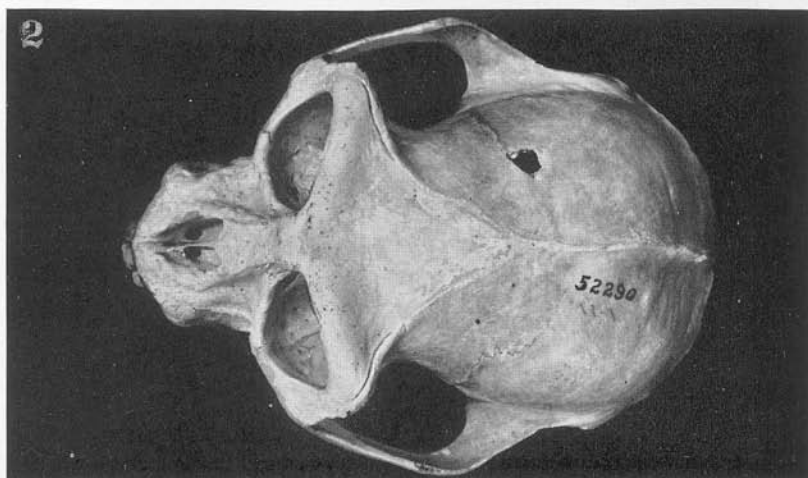
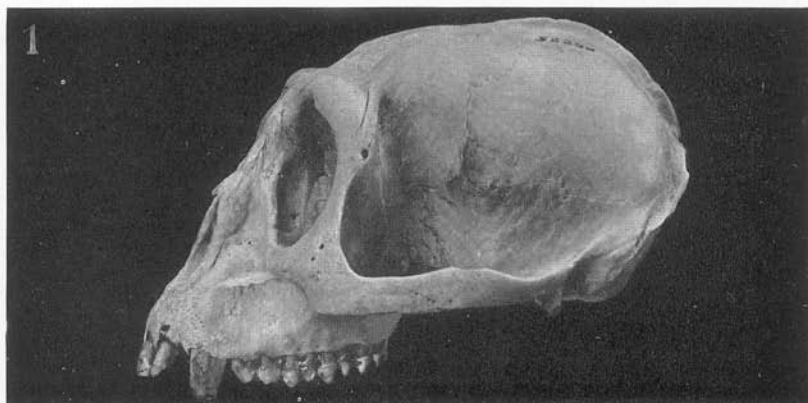


PLATE CIII

Colobus langi, new species

Type skull and mandible, male adult, Amer. Mus. No. 52290, Risimu, September 8, 1909. Greatest length of skull, 105.8 mm.

Fig. 1, front view; Fig. 2, occipital view; Fig. 3, crown view of mandible; Fig. 4, left lateral view of mandible.

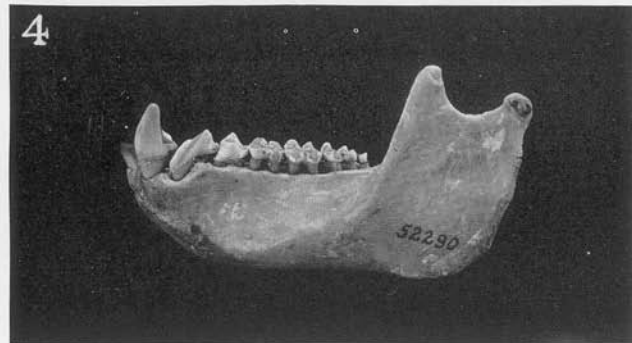
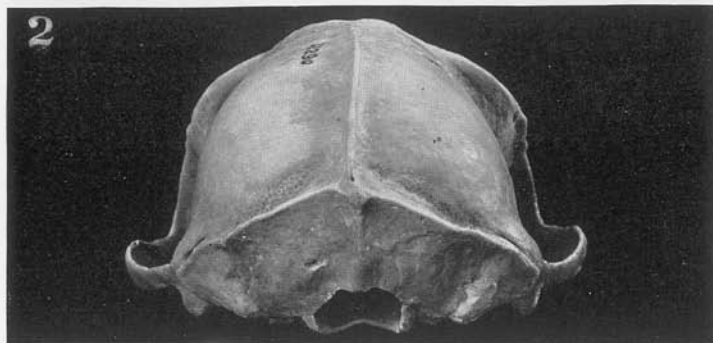
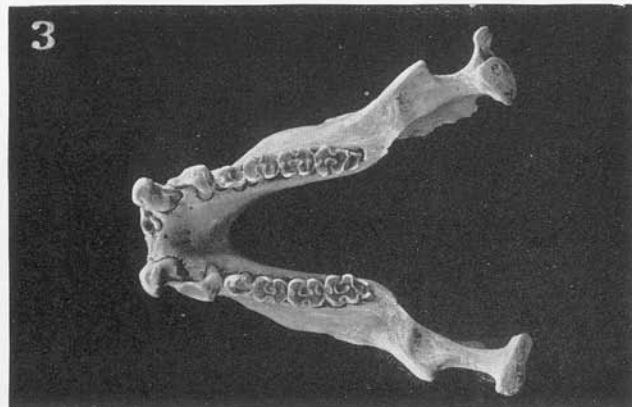


PLATE CIV

Colobus powelli powelli Matschie

Female adult, Amer. Mus. No. 52259, Akenge, September 27, 1913. Total length of animal, 1240 mm. Specimen in the flesh.

Figs. 1, 2, and 3. Front, side, and three-quarter views of head.



1



2



3

PLATE CV

Fig. 1. *Colobus powelli powelli* Matschie. Female adult, Amer. Mus. No. 52259, Akenge, September 27, 1913. Total length of animal, 1240 mm. Specimen in the flesh. Lateral view showing general body proportions.

Fig. 2. *Colobus powelli brunneus* Lönnberg. Male adult, Amer. Mus. No. 52303, Faradje, November 26, 1911. Total length of animal, 1310 mm. Anal region, showing the peculiar extrusion, about the size of an apple, just above and between the ischial callosities. *e*, extrusion; *hl*, hindlimb; *is*, ischial callosity; *sc*, scrotum; *t*, tail.

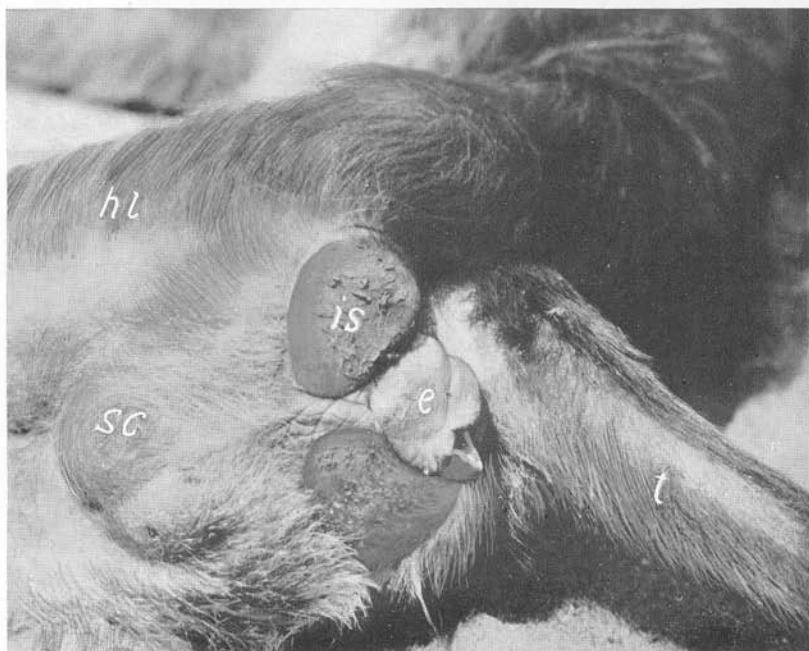
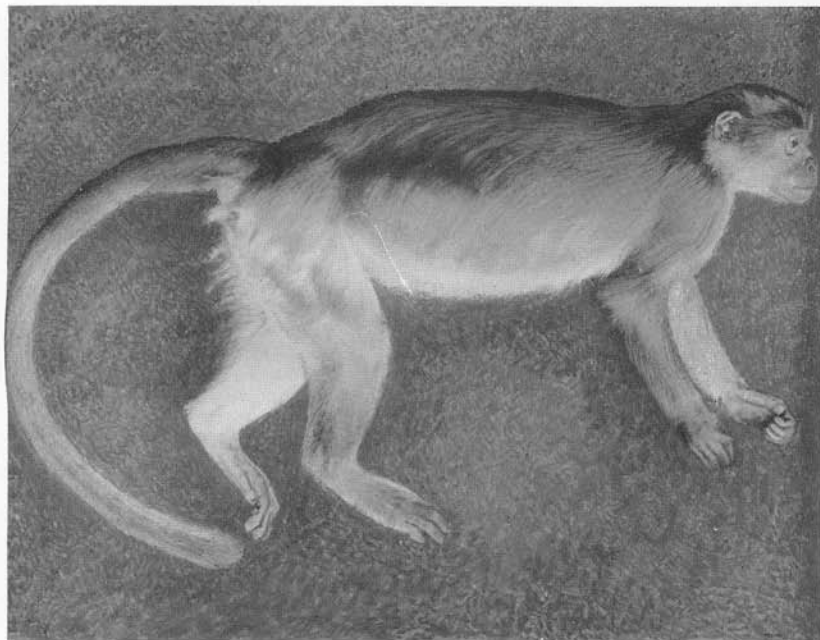


PLATE CVI

Colobus powelli brunneus Lönnberg

Figs. 1 and 2. Male adult, Amer. Mus. No. 52303, Faradje, November 26, 1911. Total length of animal, 1310 mm. Front and side views of head. Characteristic are the peculiar parting of the hair on the crown and its lengthening on the lateral portion above the ears, forming a whirl, which is well shown in the figure to the extreme right.

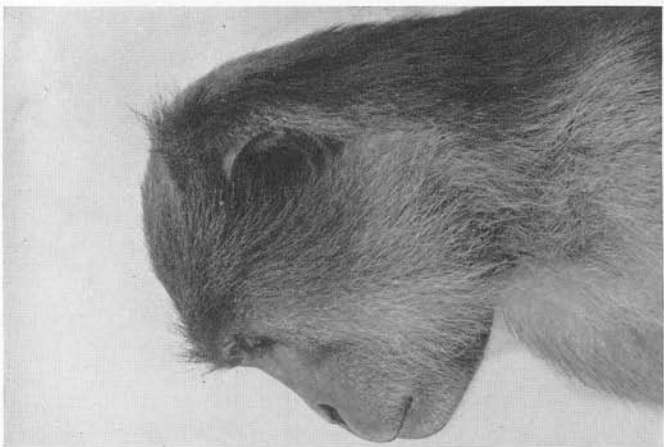
Fig. 3. Female adult, Amer. Mus. No. 52301, Faradje, July 23, 1911. Total length of animal, 1295 mm. Side view of head. Specimens in the flesh.



1



2



3

PLATE CVII

Colobus abyssinicus ituricus Matschie

Fig. 1. Male adult, Amer. Mus. No. 52240, Faradje, December 10, 1911. Total length of animal, 1400 mm. Showing general body proportions and relative length of fur.

Fig. 2. Male juvenile, Amer. Mus. No. 52230, Faradje, February 28, 1911. Total length of animal, 540 mm. Newly born specimens are practically white, but they surprisingly soon change to the adult pelage. Specimens in the flesh.

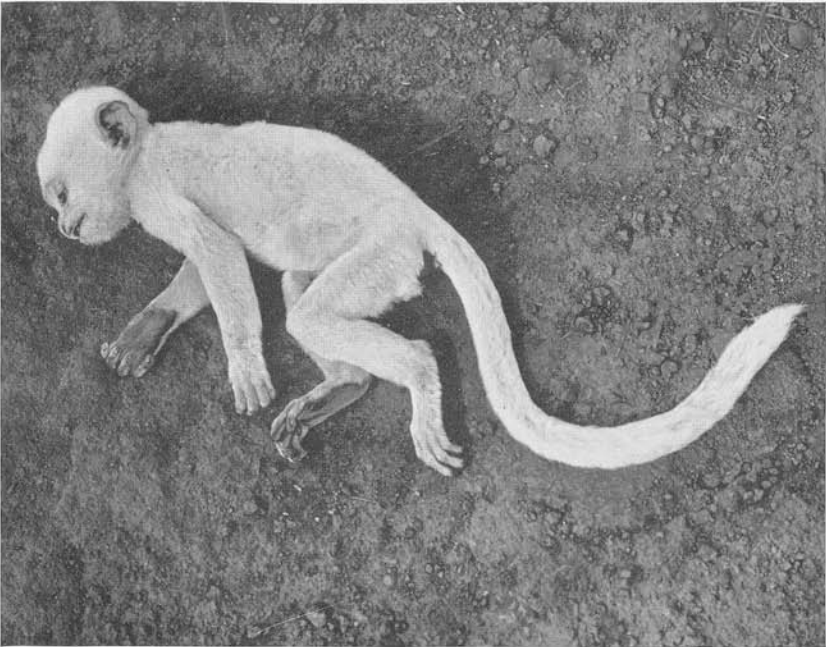
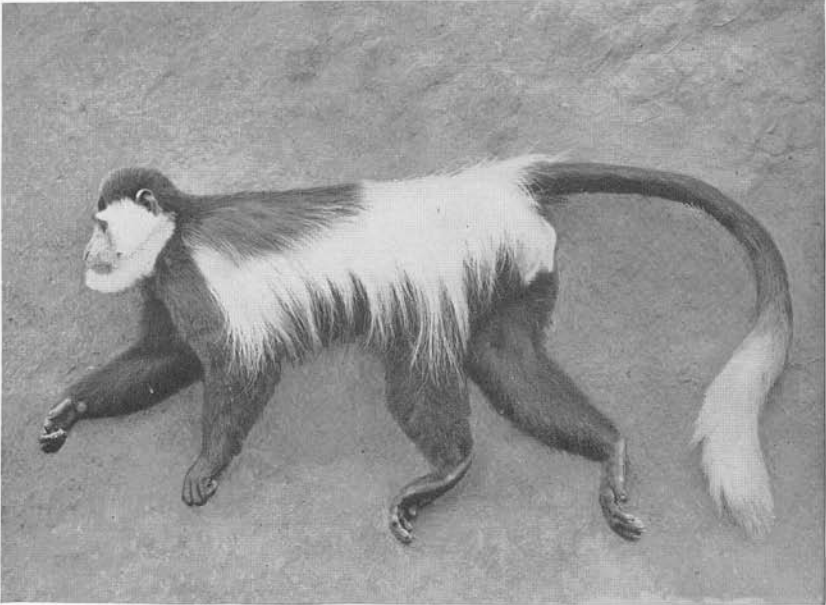
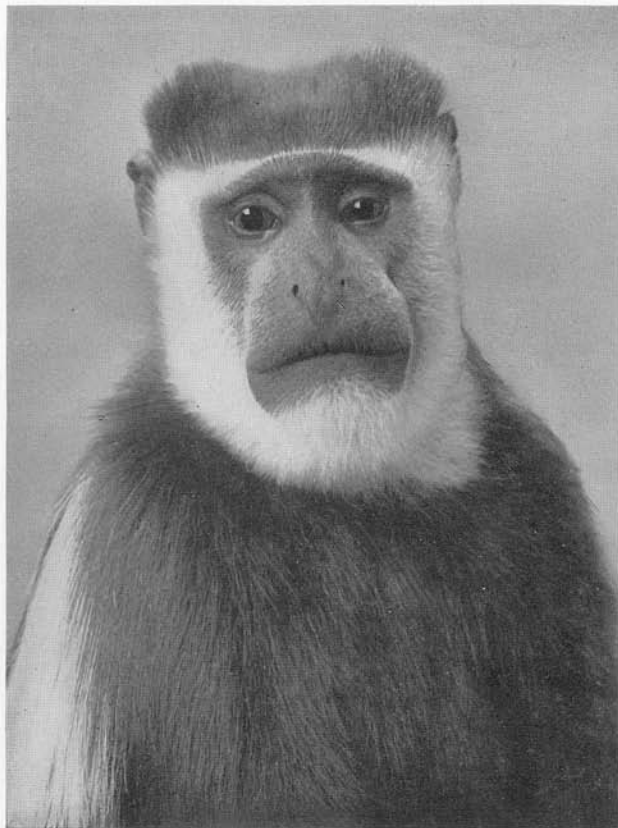


PLATE CVIII

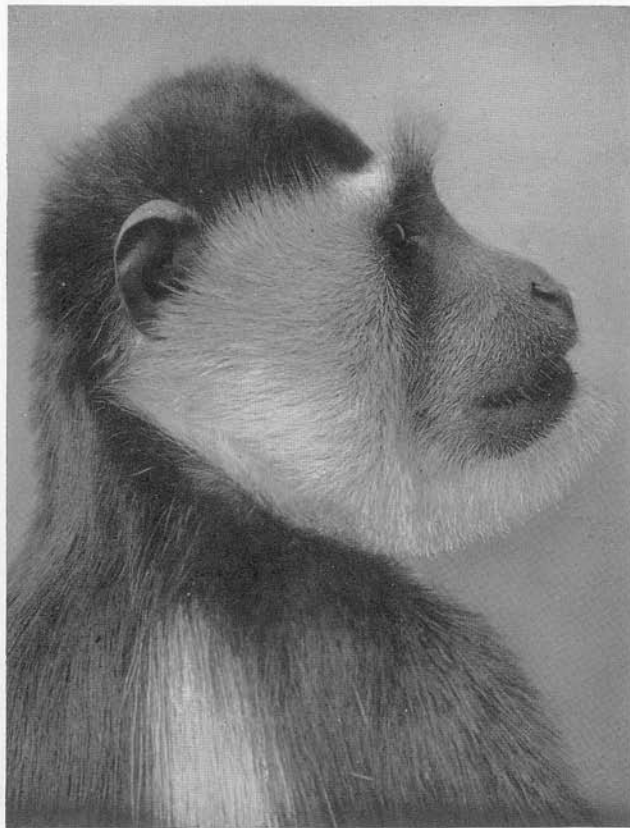
Colobus abyssinicus ituricus Matschie

Male adult, Amer. Mus. No. 52251, Faradje, October 31, 1912. Total length of animal, 1310 mm. Specimen in the flesh.

Figs. 1 and 2. Front and side views of head. These monkeys feed chiefly on young leaves, shoots, and other green vegetable matter; and the relatively thick lips make the mouthparts appear heavier.



1



2

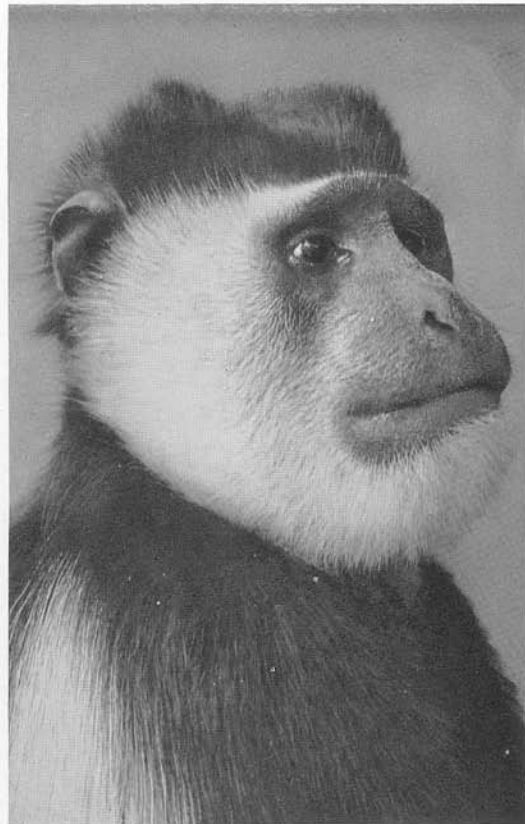
PLATE CIX

Fig. 1. *Colobus angolensis cottoni* Lydekker. Female adult, Amer. Mus. No. 52142, Akenge, September 30, 1913. Total length of animal, 1390 mm. Three-quarter view of head.

Fig. 2. *Colobus abyssinicus ituricus* Matschie. Male adult, Amer. Mus. No. 52251, Faradje, October 31, 1912. Total length of animal, 1310 mm. Three-quarter view of head. Specimens in the flesh.



1



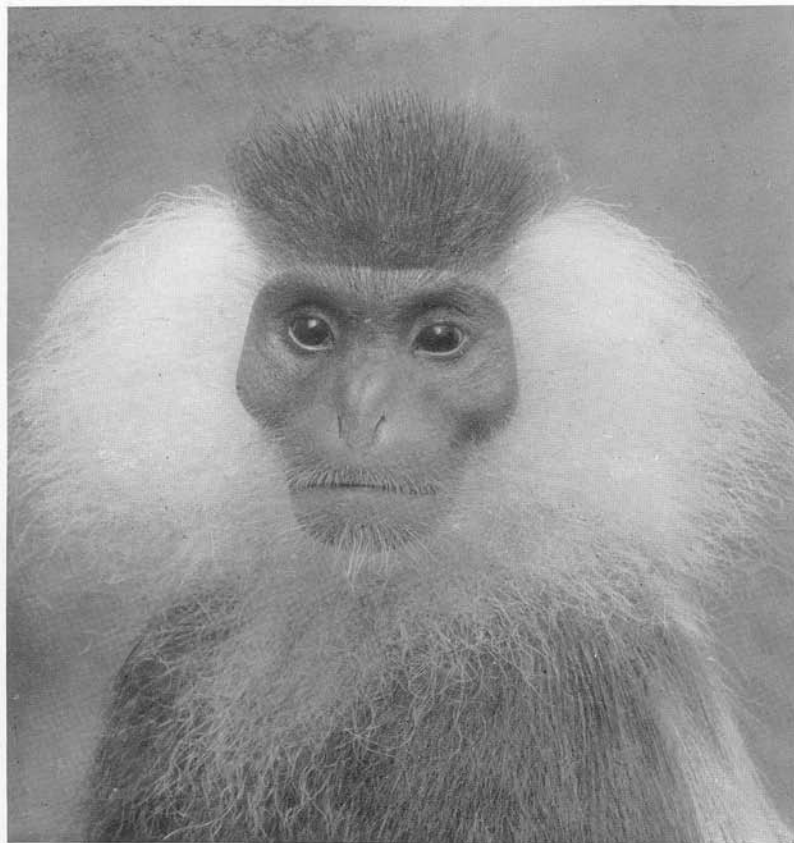
2

PLATE CX

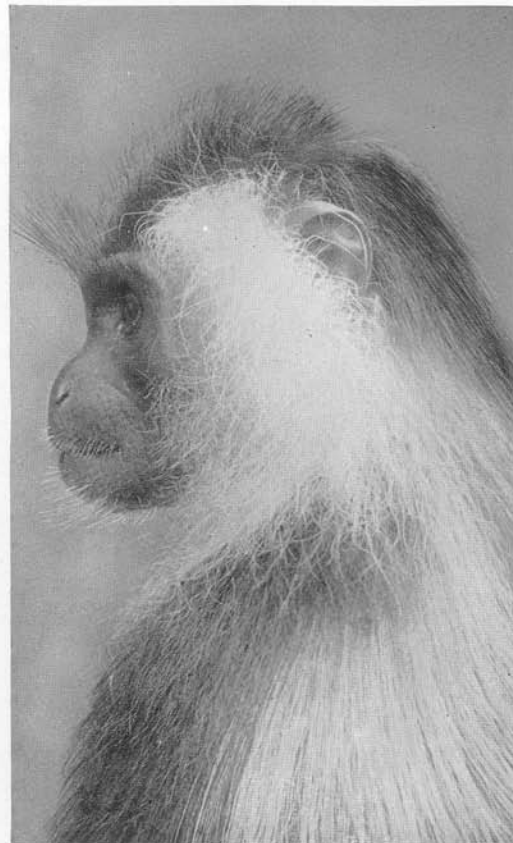
Colobus angolensis cottoni Lydekker

Female adult, Amer. Mus. No. 52142, Akenge, September 30, 1913. Total length of animal, 1390 mm. Specimen in the flesh.

Figs. 1 and 2. Front and side views of head. The exceptionally long, fluffy, white whiskers against the silky black coat forms a striking contrast.



1



2

PLATE CXI

Colobus angolensis cottoni Lydekker

Fig. 1. Female adult, Amer. Mus. No. 52142, Akenge, September 30, 1913. Total length of animal, 1390 mm. Showing general body proportions.

Fig. 2. Female juvenile, Amer. Mus. No. 52178, Niapu, November 12, 1913. Total length of animal, 490 mm. At birth the young in all the black-and-white, and even in the reddish *Colobus* collected are whitish. Specimens in the flesh.



1



2

PLATE CXII

Colobus powelli powelli Matschie

Comparative left lateral views of three adult male skulls. Greatest length of skull, 112.3 mm. Compare with Pl. CXIII, showing three adult female skulls; also with different views to and including Pl. CXXI.

Fig. 1. Male adult, Amer. Mus. No. 52265, Akenge, October 1, 1913.

Fig. 2. Male adult, Amer. Mus. No. 52270, Akenge, October 5, 1913.

Fig. 3. Male adult, Amer. Mus. No. 52281, Akenge, October 21, 1913.

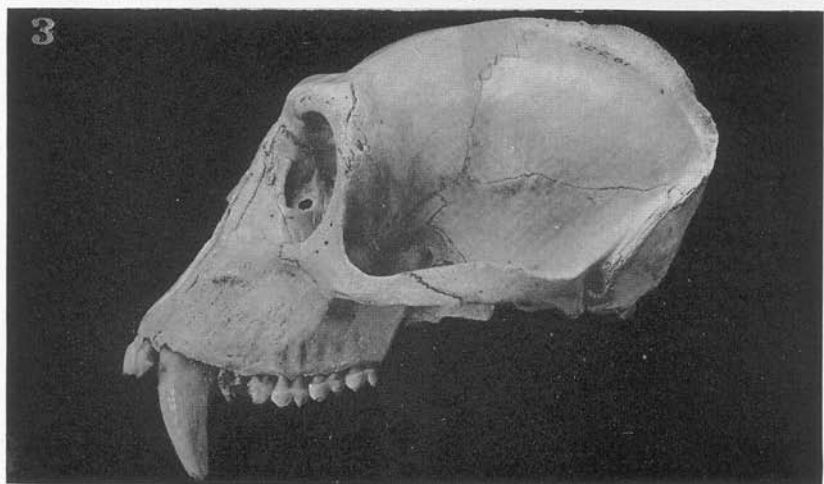
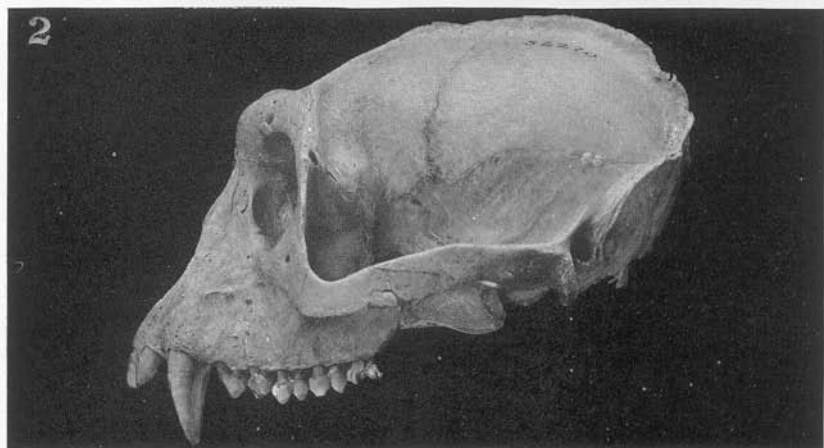


PLATE CXIII

Colobus powelli powelli Matschie

Comparative left lateral views of three adult female skulls. Greatest length of skull, 102.7 mm. Compare with Pl. CXII, showing three adult male skulls; also with different views to and including Pl. CXXI.

Fig. 1. Female adult, Amer. Mus. No. 52279, Akenge, October 20, 1913.

Fig. 2. Female adult, Amer. Mus. No. 52273, Akenge, October 10, 1913.

Fig. 3. Female adult, Amer. Mus. No. 52275, Akenge, October 13, 1913.

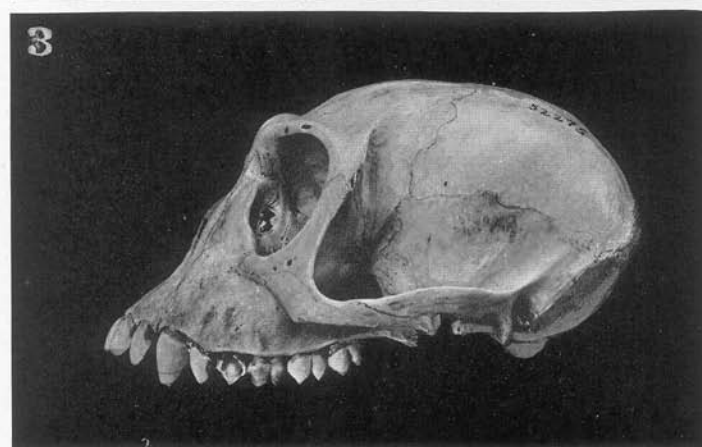
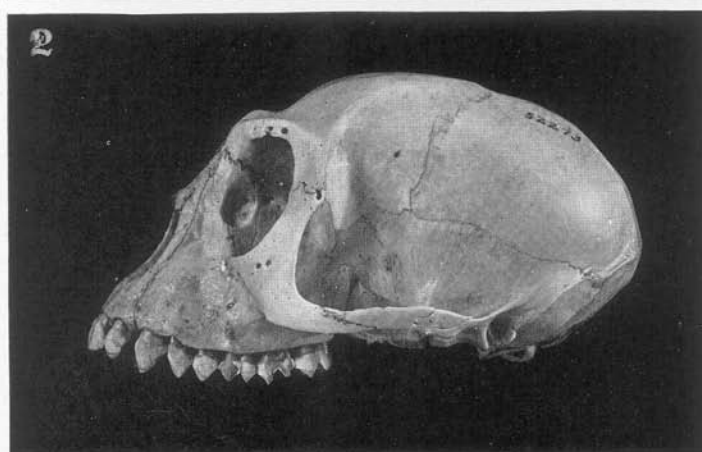
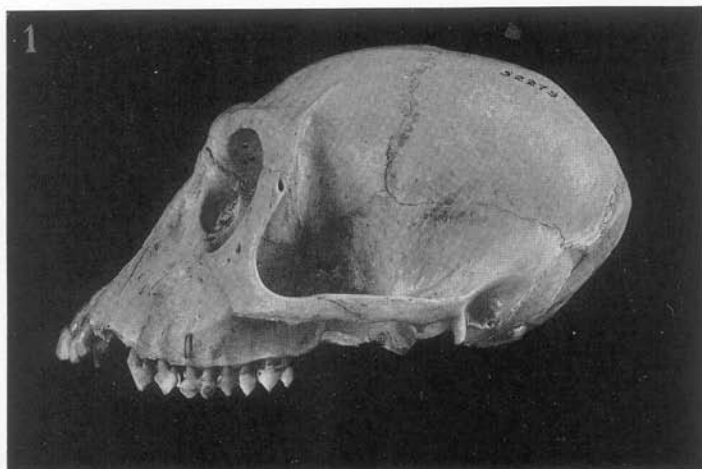


PLATE CXIV

Colobus powelli powelli Matschie

Comparative dorsal views of three adult male skulls. Greatest length of skull, 112.3 mm. Compare with Pl. CXV, showing three adult female skulls.

Fig. 1. Male adult, Amer. Mus. No. 52265, Akenge, October 1, 1913.

Fig. 2. Male adult, Amer. Mus. No. 52270, Akenge, October 5, 1913.

Fig. 3. Male adult, Amer. Mus. No. 52281, Akenge, October 21, 1913.

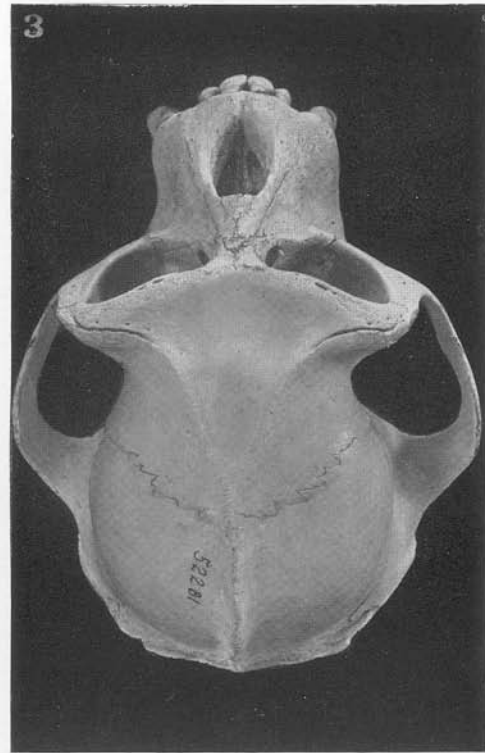
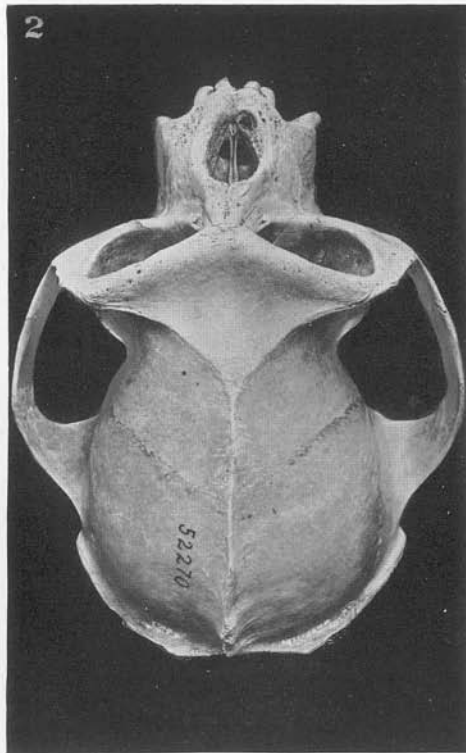
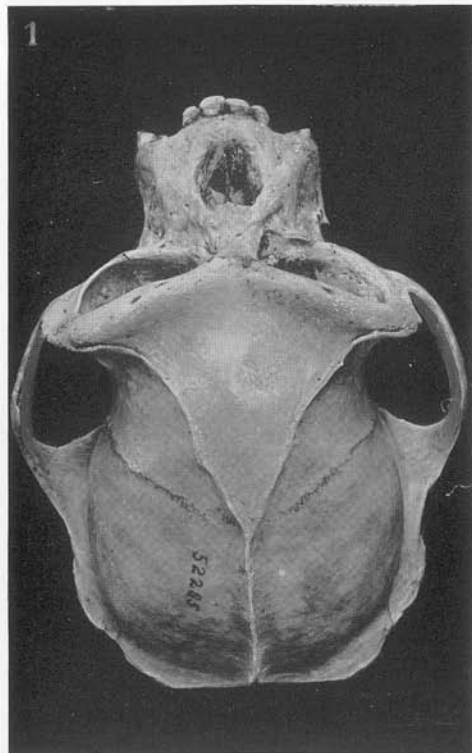


PLATE CXV

Colobus powelli powelli Matschie

Comparative dorsal views of three adult female skulls. Greatest length of skull, 102.7 mm. Compare with Pl. CXIV, showing three adult male skulls.

Fig. 1. Female adult, Amer. Mus. No. 52279, Akenge, October 20, 1913.

Fig. 2. Female adult, Amer. Mus. No. 52273, Akenge, October 10, 1913.

Fig. 3. Female adult, Amer. Mus. No. 52275, Akenge, October 13, 1913.

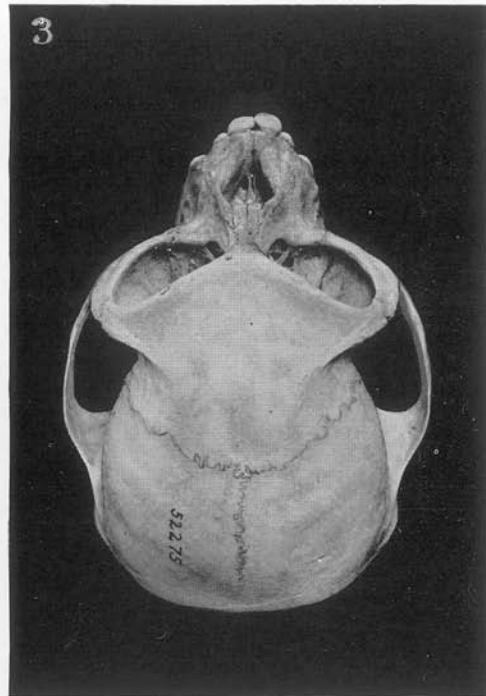
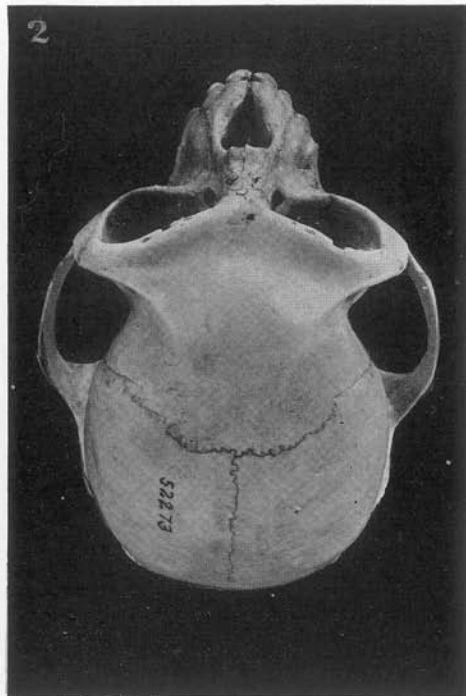
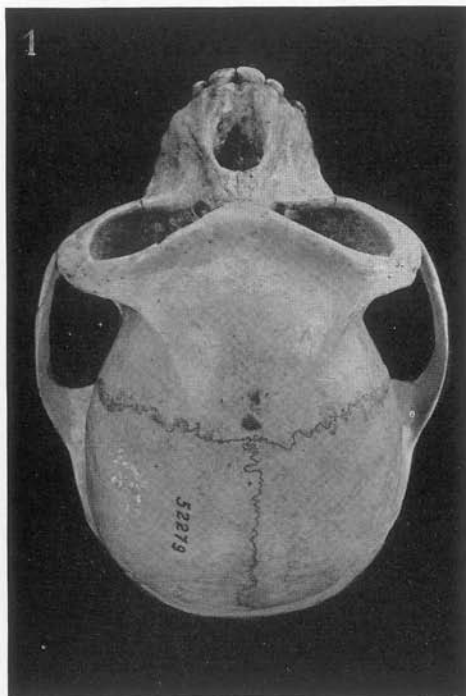


PLATE CXVI

Colobus powelli powelli Matschie

Comparative palatal views of three adult male skulls. Greatest length of skull, 112.3 mm. Compare with Pl. CXVII, showing three adult female skulls.

Fig. 1. Male adult, Amer. Mus. No. 52265, Akenge, October 1, 1913.

Fig. 2. Male adult, Amer. Mus. No. 52270, Akenge, October 5, 1913.

Fig. 3. Male adult, Amer. Mus. No. 52281, Akenge, October 21, 1913.

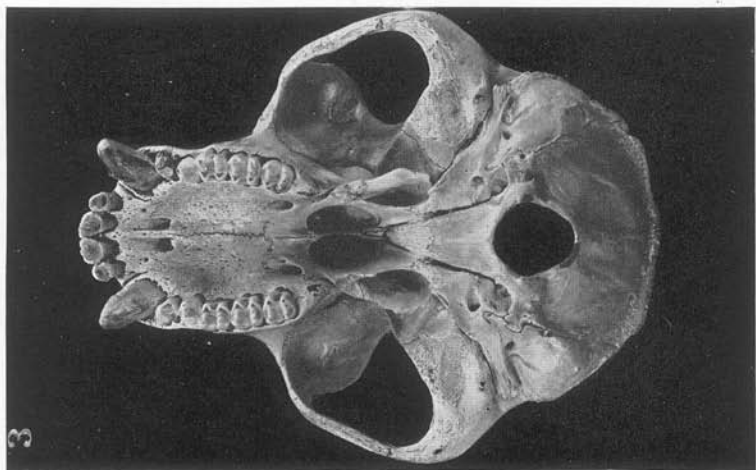
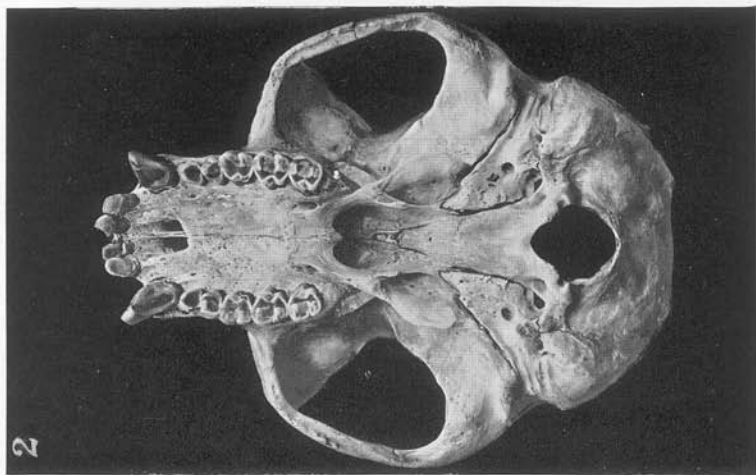
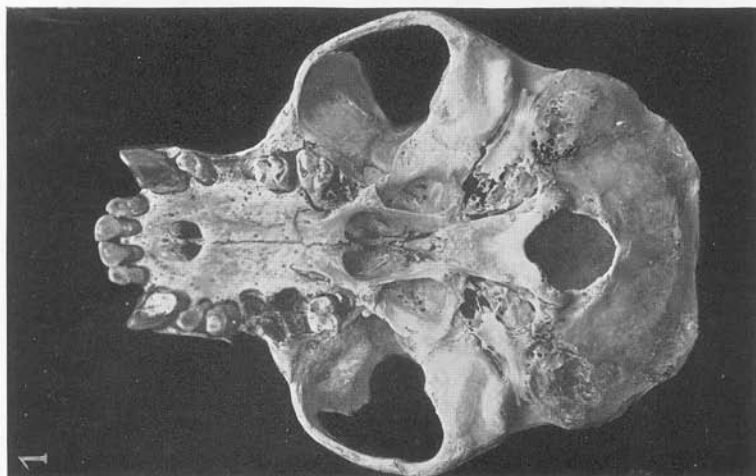


PLATE CXVII

Colobus powelli powelli Matschie

Comparative palatal views of three adult female skulls. Greatest length of skull, 102.7 mm. Compare with Pl. CXVI, showing three adult male skulls.

Fig. 1. Female adult, Amer. Mus. No. 52279, Akenge, October 20, 1913.

Fig. 2. Female adult, Amer. Mus. No. 52273, Akenge, October 10, 1913.

Fig. 3. Female adult, Amer. Mus. No. 52275, Akenge, October 13, 1913.

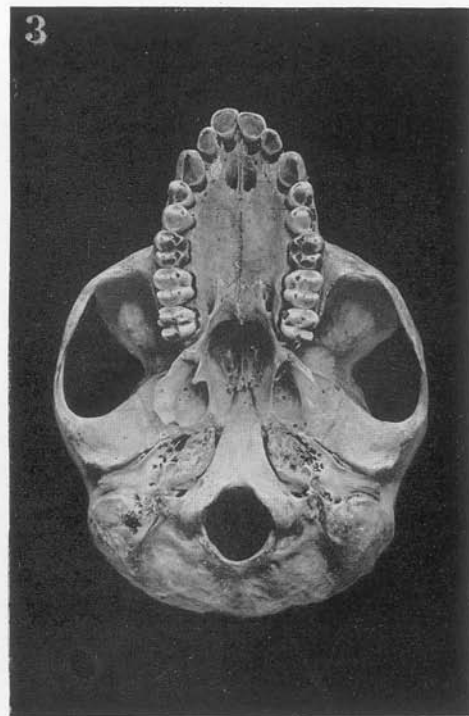
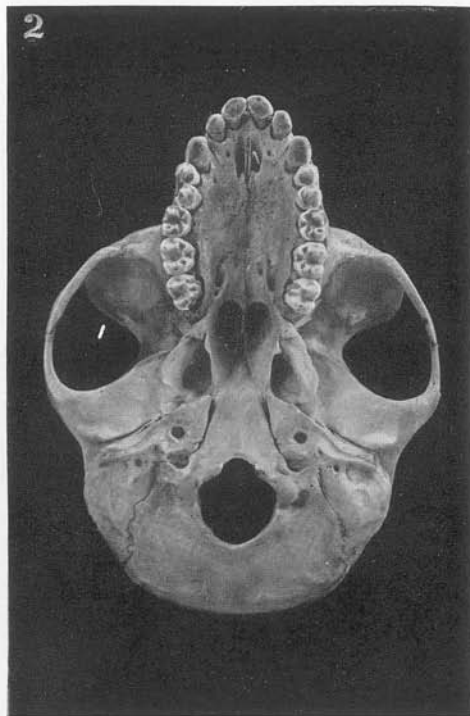
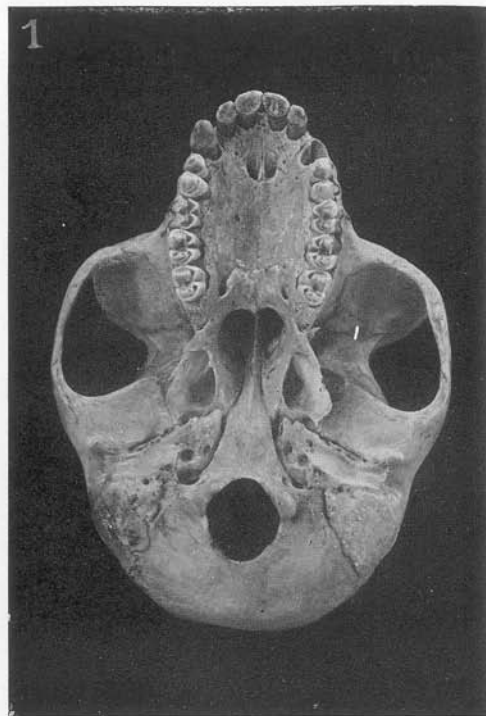


PLATE CXVIII

Colobus powelli powelli Matschie

Comparative front views of six skulls. Greatest length of skull, 112.3 mm.

Fig. 1. Male adult, Amer. Mus. No. 52265, Akenge, October 1, 1913.

Fig. 2. Male adult, Amer. Mus. No. 52270, Akenge, October 5, 1913.

Fig. 3. Male adult, Amer. Mus. No. 52281, Akenge, October 21, 1913.

Fig. 4. Female adult, Amer. Mus. No. 52279, Akenge, October 20, 1913.

Fig. 5. Female adult, Amer. Mus. No. 52273, Akenge, October 10, 1913.

Fig. 6. Female adult, Amer. Mus. No. 52275, Akenge, October 13, 1913.

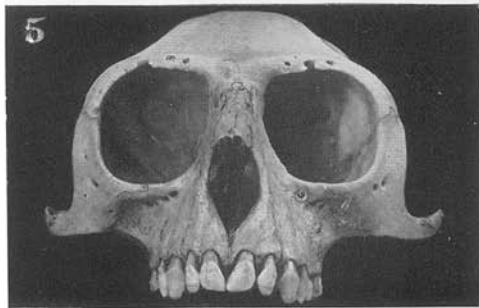
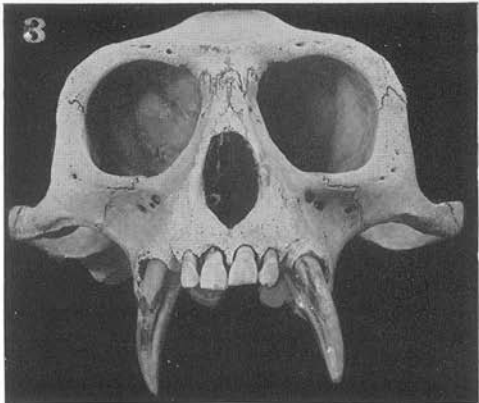
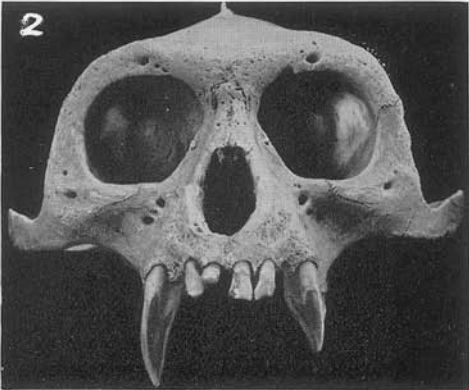


PLATE CXIX

Colobus powelli powelli Matschie

Comparative occipital views of six skulls. Greatest length of skull, 112.3 mm.

Fig. 1. Male adult, Amer. Mus. No. 52265, Akenge, October 1, 1913.

Fig. 2. Male adult, Amer. Mus. No. 52270, Akenge, October 5, 1913.

Fig. 3. Male adult, Amer. Mus. No. 52281, Akenge, October 21, 1913.

Fig. 4. Female adult, Amer. Mus. No. 52279, Akenge, October 20, 1913.

Fig. 5. Female adult, Amer. Mus. No. 52273, Akenge, October 10, 1913.

Fig. 6. Female adult, Amer. Mus. No. 52275, Akenge, October 13, 1913.

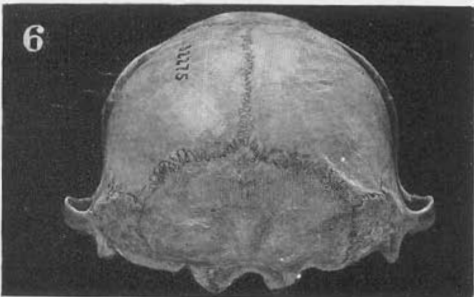
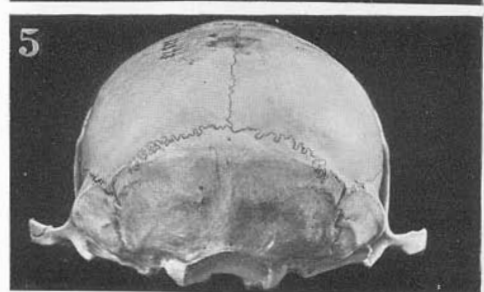
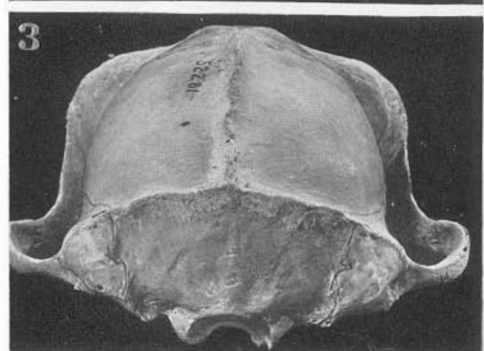
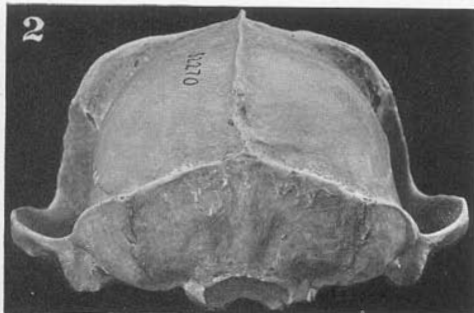
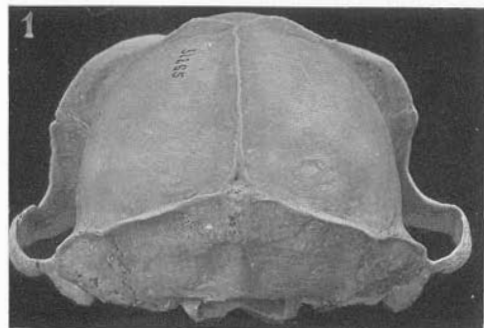


PLATE CXX

Colobus powelli powelli Matschie

Comparative left lateral views of six mandibles.

- Fig. 1. Male adult, Amer. Mus. No. 52265, Akenge, October 1, 1913.
- Fig. 2. Male adult, Amer. Mus. No. 52270, Akenge, October 5, 1913.
- Fig. 3. Male adult, Amer. Mus. No. 52281, Akenge, October 21, 1913.
- Fig. 4. Female adult, Amer. Mus. No. 52279, Akenge, October 20, 1913.
- Fig. 5. Female adult, Amer. Mus. No. 52273, Akenge, October 10, 1913.
- Fig. 6. Female adult, Amer. Mus. No. 52275, Akenge, October 13, 1913.

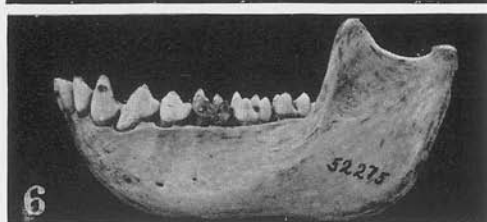


PLATE CXXI

Colobus powelli powelli Matschie

Comparative crown views of six mandibles.

- Fig. 1. Male adult, Amer. Mus. No. 52265, Akenge, October 1, 1913.
- Fig. 2. Male adult, Amer. Mus. No. 52270, Akenge, October 5, 1913.
- Fig. 3. Male adult, Amer. Mus. No. 52281, Akenge, October 21, 1913.
- Fig. 4. Female adult, Amer. Mus. No. 52279, Akenge, October 20, 1913.
- Fig. 5. Female adult, Amer. Mus. No. 52273, Akenge, October 10, 1913.
- Fig. 6. Female adult, Amer. Mus. No. 52275, Akenge, October 13, 1913.

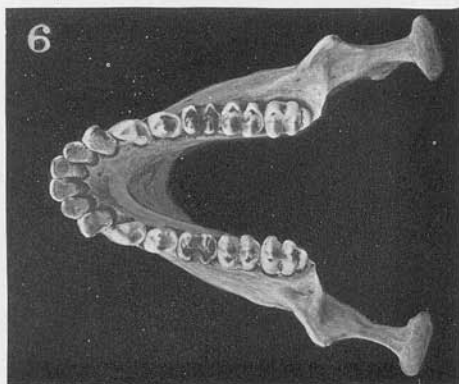
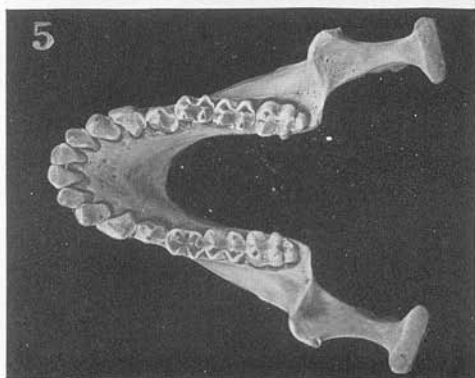
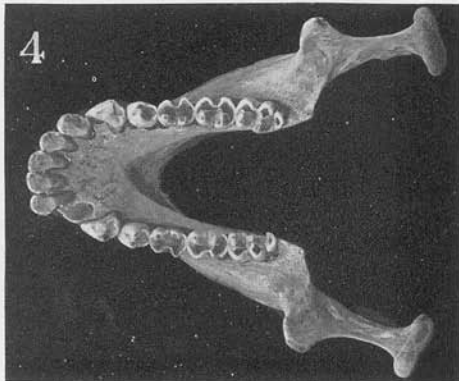
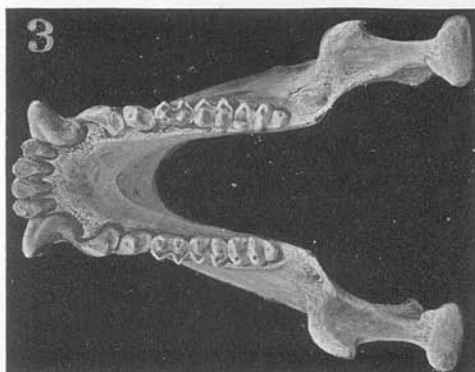
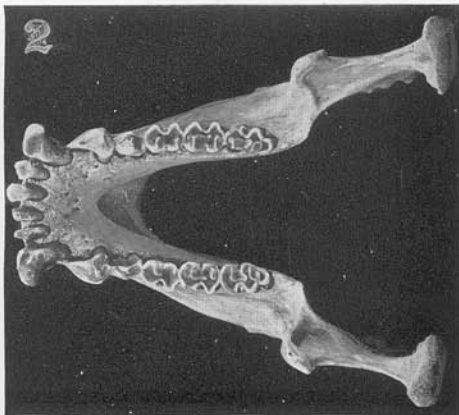
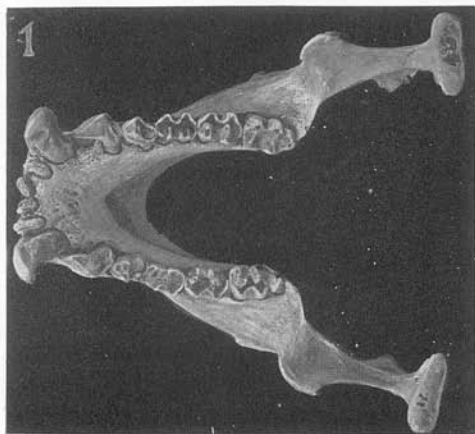


PLATE CXXII

Colobus powelli brunneus Lönnberg

Comparative left lateral views of three adult male skulls. Greatest length of skull, 130.7 mm. Compare with Pl. CXXIII, showing another adult male and two adult female skulls; also with different views to and including Pl. CXXXI.

Fig. 1. Male adult, Amer. Mus. No. 52307, Faradje, November 23, 1911.

Fig. 2. Male adult, Amer. Mus. No. 52324, Faradje, December 2, 1911.

Fig. 3. Male adult, Amer. Mus. No. 52329, Faradje, December 3, 1911.

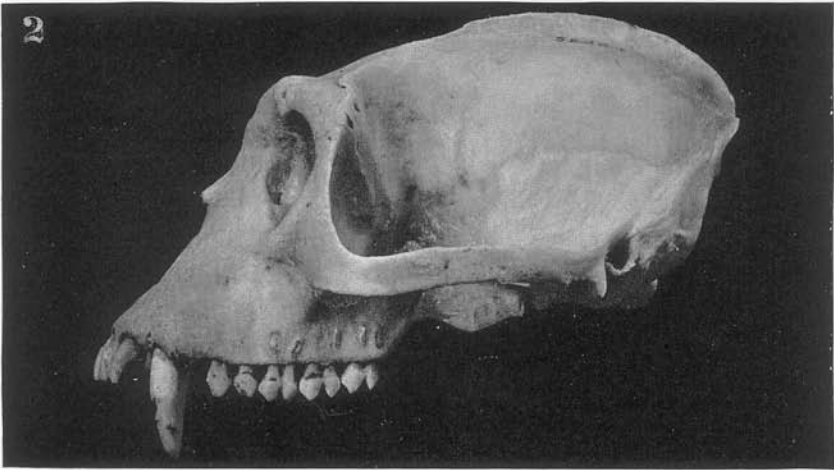


PLATE CXXIII

Colobus powelli brunneus Lönnberg

Comparative left lateral views of one adult male and two adult female skulls. Greatest length of skull, 117.8 mm. Compare with Pl. CXXII, showing three adult male skulls; also with different views to and including Pl. CXXXI.

Fig. 1. Male adult, Amer. Mus. No. 52304, Faradje, November 23, 1911.

Fig. 2. Female adult, Amer. Mus. No. 52327, Faradje, December 2, 1911.

Fig. 3. Female adult, Amer. Mus. No. 52310, Faradje, November 23, 1911.

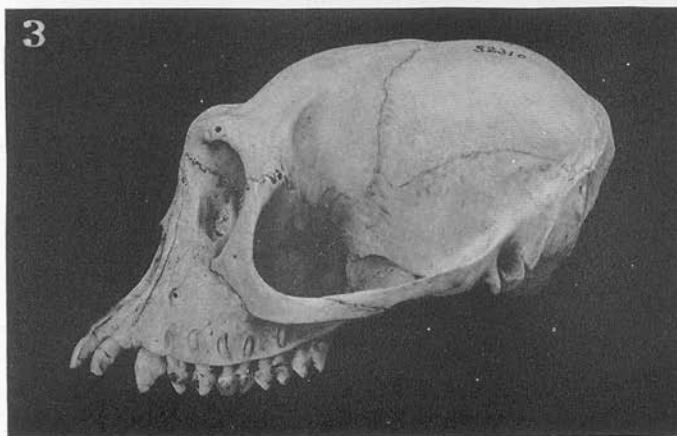
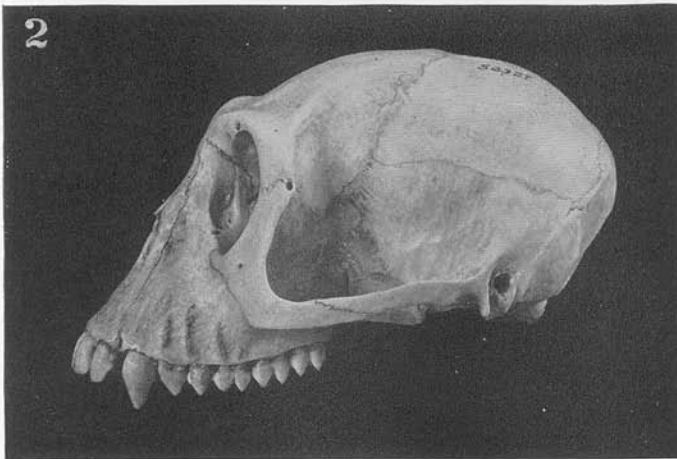
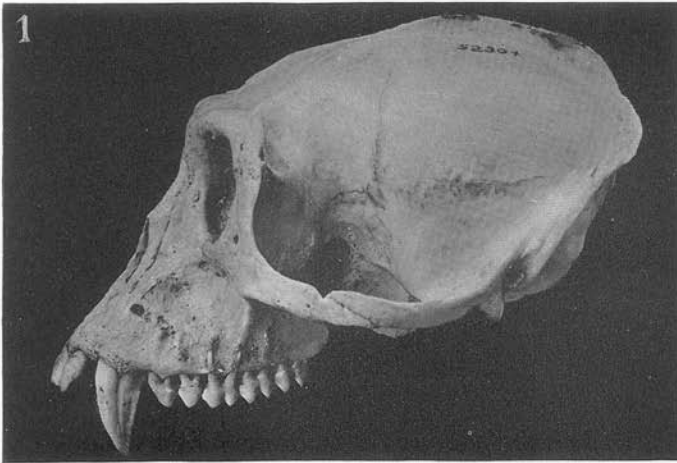


PLATE CXXIV

Colobus powelli brunneus Lönnberg

Comparative dorsal views of three adult male skulls. Greatest length of skull, 130.7 mm. Compare with Pl. CXXV, showing another adult male and two adult female skulls.

- Fig. 1. Male adult, Amer. Mus. No. 52307, Faradje, November 23 1911.
- Fig. 2. Male adult, Amer. Mus. No. 52324, Faradje, December 2, 1911.
- Fig. 3. Male adult, Amer. Mus. No. 52329, Faradje, December 3, 1911.

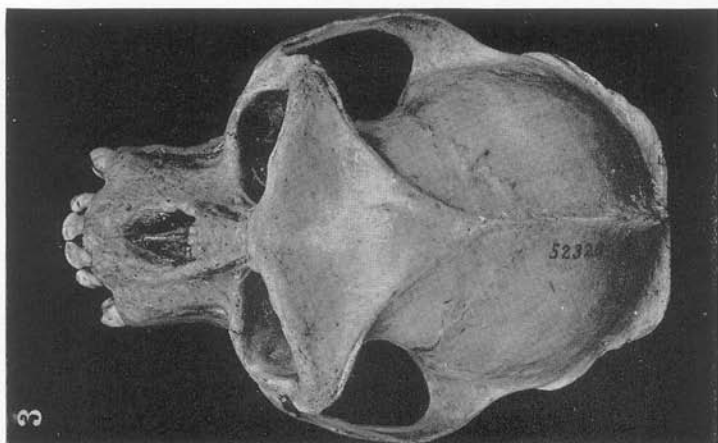
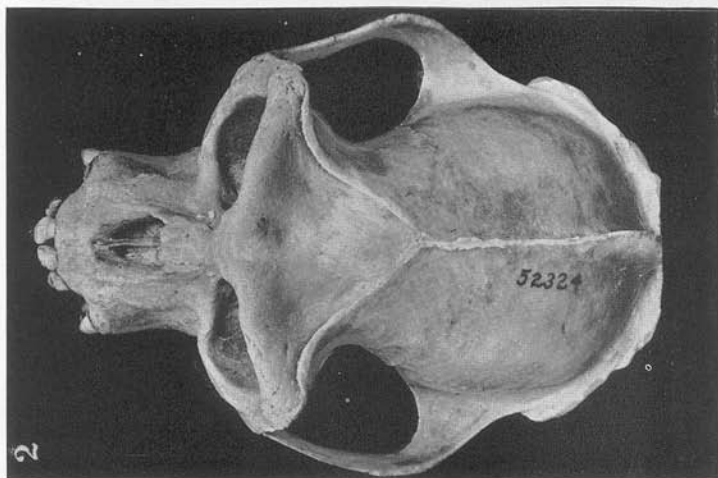
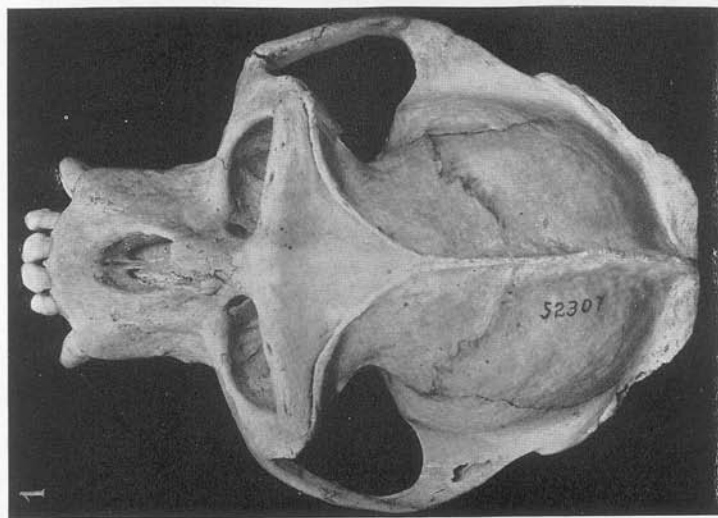


PLATE CXXV

Colobus powelli brunneus Lönnberg

Comparative dorsal views of one adult male and two adult female skulls. Greatest length of skull, 117.8 mm. Compare with Pl. CXXIV, showing three adult male skulls.

- Fig. 1. Male adult, Amer. Mus. No. 52304, Faradje, November 23, 1911.
- Fig. 2. Female adult, Amer. Mus. No. 52327, Faradje, December 2, 1911.
- Fig. 3. Female adult, Amer. Mus. No. 52310, Faradje, November 23, 1911.

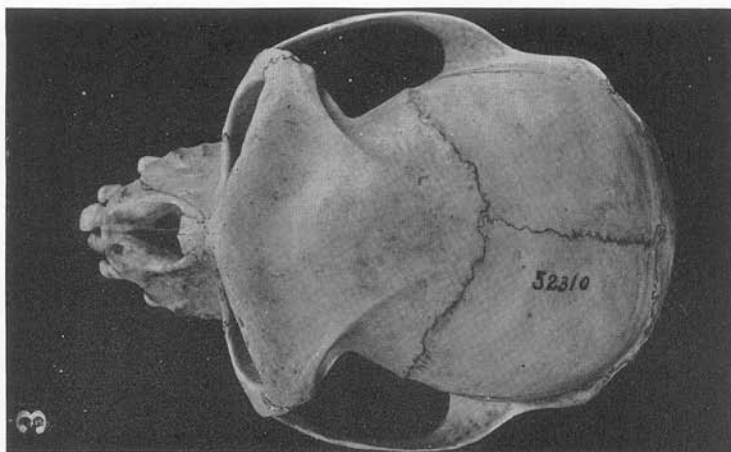
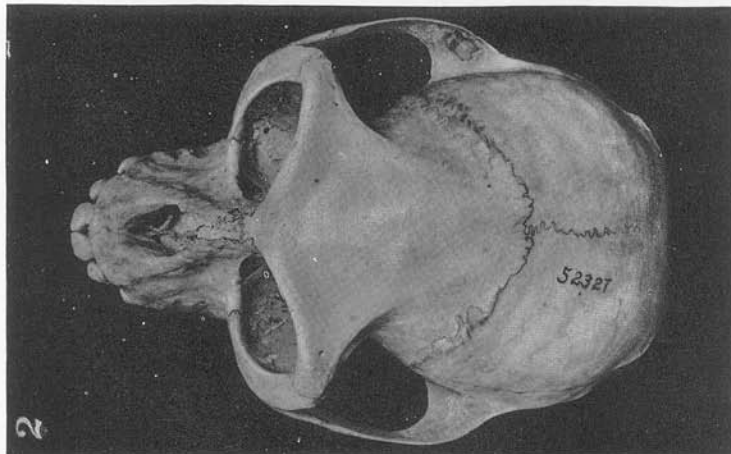
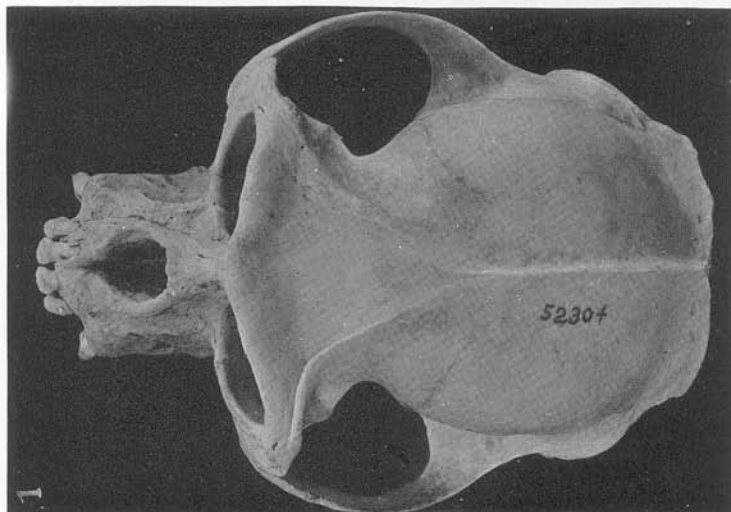


PLATE CXXVI

Colobus powelli brunneus Lönnberg

Comparative palatal views of three adult male skulls. Greatest length of skull, 130.7 mm. Compare with Pl. CXXVII, showing another adult male and two adult female skulls.

Fig. 1. Male adult, Amer. Mus. No. 52307, Faradje, November 23, 1911.

Fig. 2. Male adult, Amer. Mus. No. 52324, Faradje, December 2, 1911.

Fig. 3. Male adult, Amer. Mus. No. 52329, Faradje, December 3, 1911.

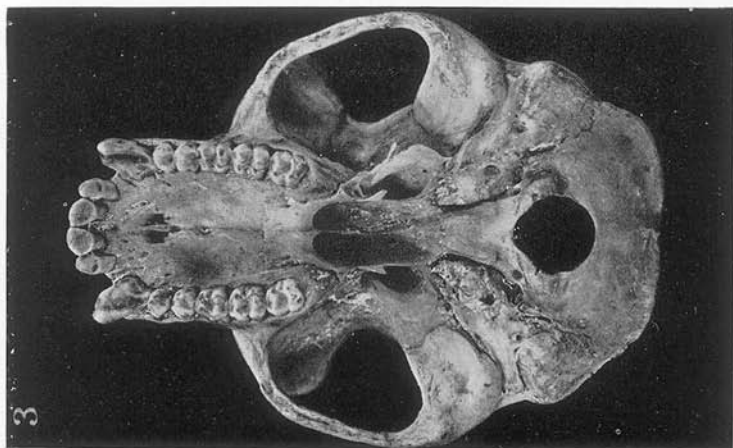
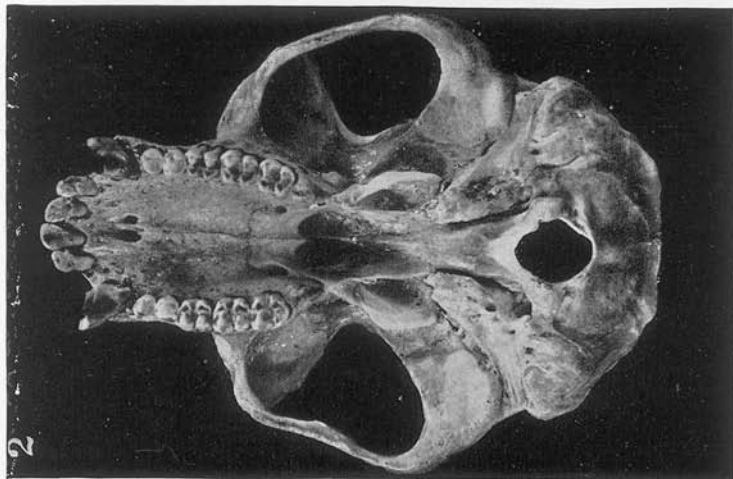
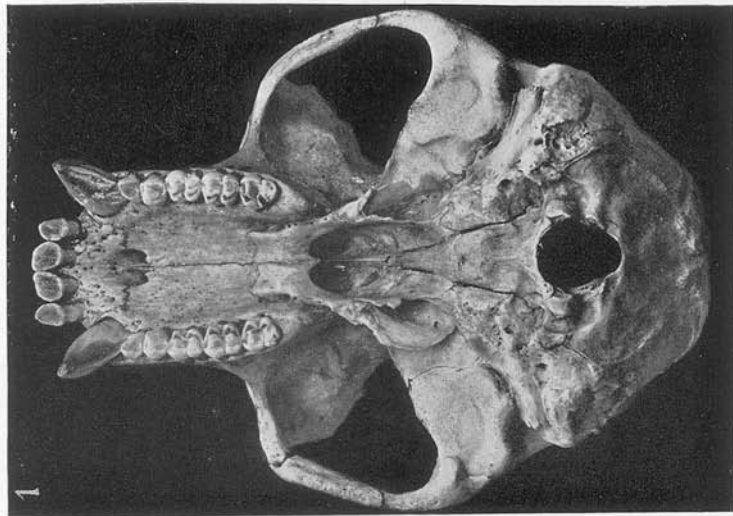


PLATE CXXVII

Colobus powelli brunneus Lönnberg

Comparative palatal views of one adult male and two adult female skulls. Greatest length of skull, 117.8 mm. Compare with Pl. CXXVI, showing three adult male skulls.

- Fig. 1. Male adult, Amer. Mus. No. 52304, Faradje, November 23, 1911.
- Fig. 2. Female adult, Amer. Mus. No. 52327, Faradje, December 2, 1911.
- Fig. 3. Female adult, Amer. Mus. No. 52310, Faradje, November 23, 1911.

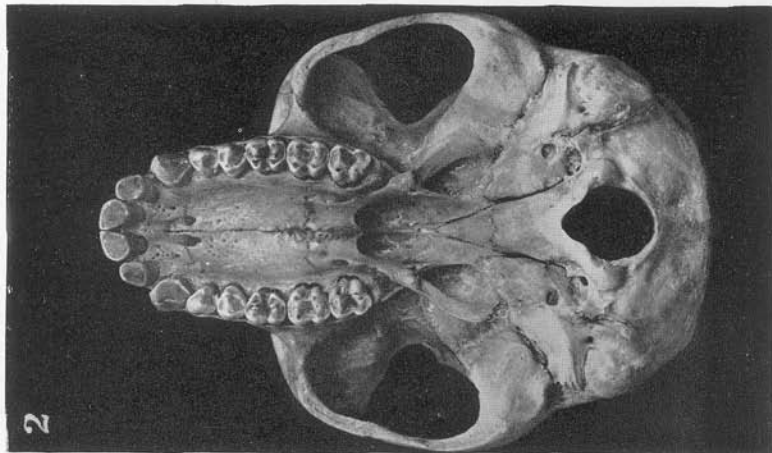
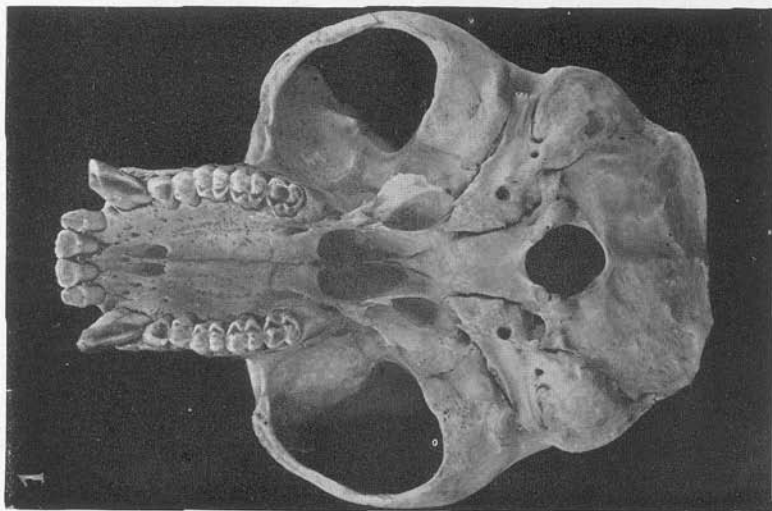


PLATE CXXVIII

Colobus powelli brunneus Lönnberg

Comparative front views of six skulls. Greatest length of skull, 130.7 mm.

- Fig. 1. Male adult, Amer. Mus. No. 52307, Faradje, November 23, 1911.
- Fig. 2. Male adult, Amer. Mus. No. 52324, Faradje, December 2, 1911.
- Fig. 3. Male adult, Amer. Mus. No. 52329, Faradje, December 3, 1911.
- Fig. 4. Male adult, Amer. Mus. No. 52304, Faradje, November 23, 1911.
- Fig. 5. Female adult, Amer. Mus. No. 52327, Faradje, December 2, 1911.
- Fig. 6. Female adult, Amer. Mus. No. 52310, Faradje, November 23, 1911.

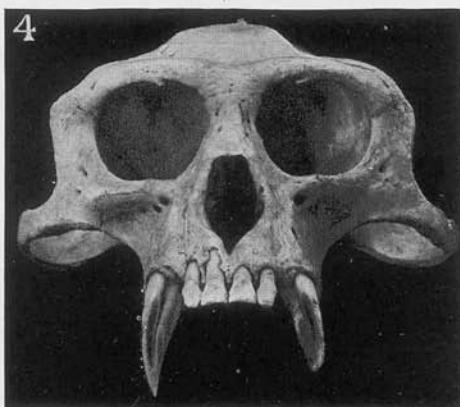
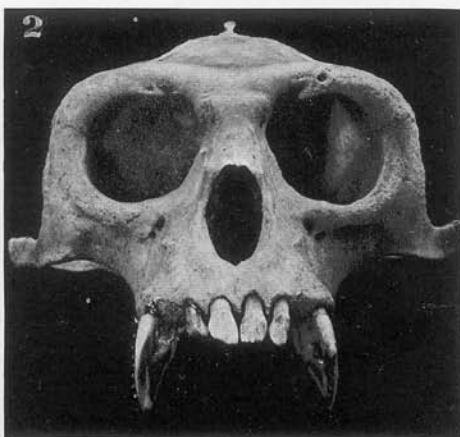
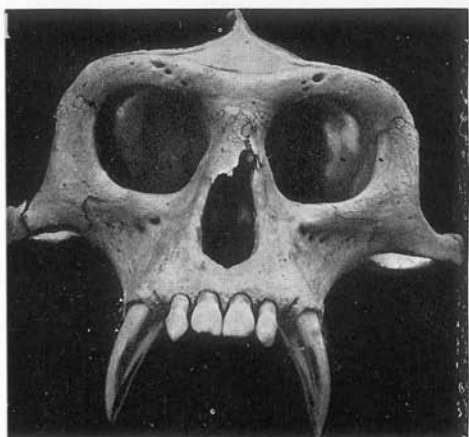


PLATE CXXIX

Colobus powelli brunneus Lönnberg

Comparative occipital views of six skulls. Greatest length of skull, 130.7 mm.

- Fig. 1. Male adult, Amer. Mus. No. 52307, Faradje, November 23, 1911.
- Fig. 2. Male adult, Amer. Mus. No. 52324, Faradje, December 2, 1911.
- Fig. 3. Male adult, Amer. Mus. No. 52329, Faradje, December 3, 1911.
- Fig. 4. Male adult, Amer. Mus. No. 52304, Faradje, November 23, 1911.
- Fig. 5. Female adult, Amer. Mus. No. 52327, Faradje, December 2, 1911.
- Fig. 6. Female adult, Amer. Mus. No. 52310, Faradje, November 23, 1911.

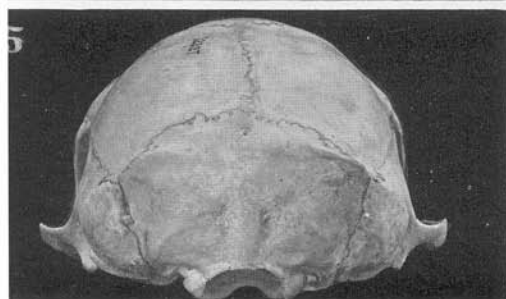
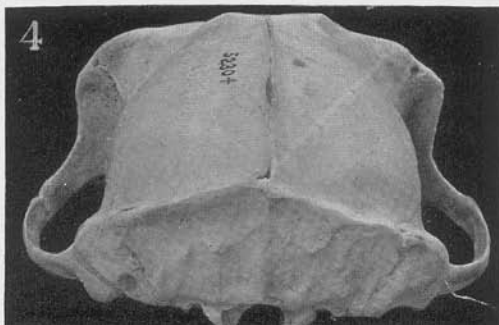
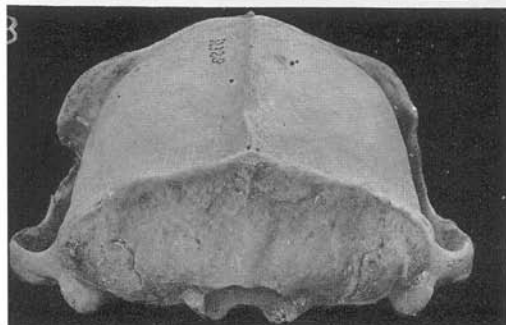
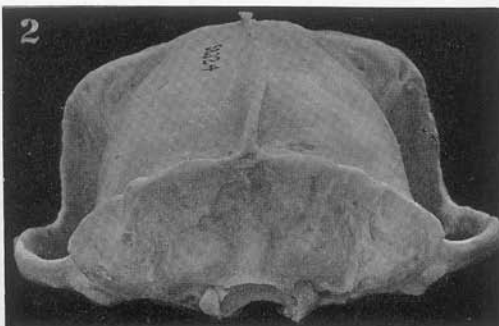
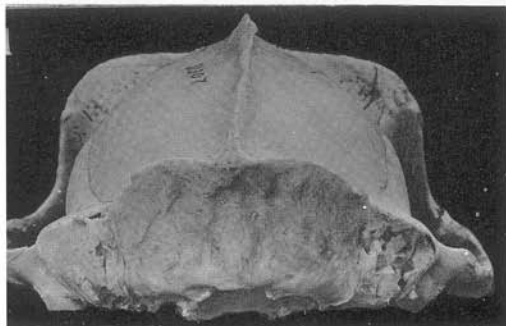


PLATE CXXX

Colobus powelli brunneus Lönnberg

Comparative left lateral views of six mandibles.

- Fig. 1. Male adult, Amer. Mus. No. 52307, Faradje, November 23, 1911.
- Fig. 2. Male adult, Amer. Mus. No. 52324, Faradje, December 2, 1911.
- Fig. 3. Male adult, Amer. Mus. No. 52329, Faradje, December 3, 1911.
- Fig. 4. Male adult, Amer. Mus. No. 52304, Faradje, November 23, 1911.
- Fig. 5. Female adult, Amer. Mus. No. 52327, Faradje, December 2, 1911.
- Fig. 6. Female adult, Amer. Mus. No. 52310, Faradje, November 23, 1911.

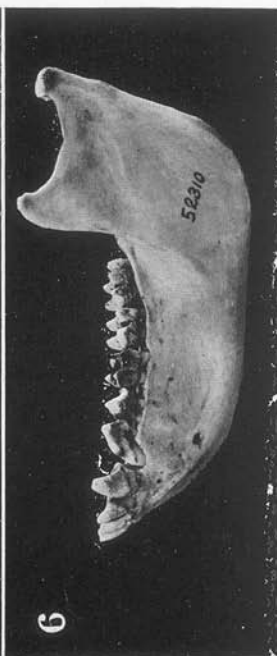
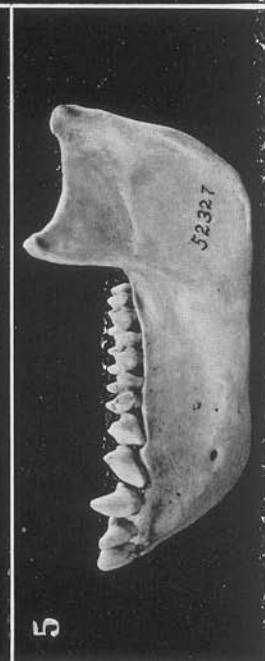
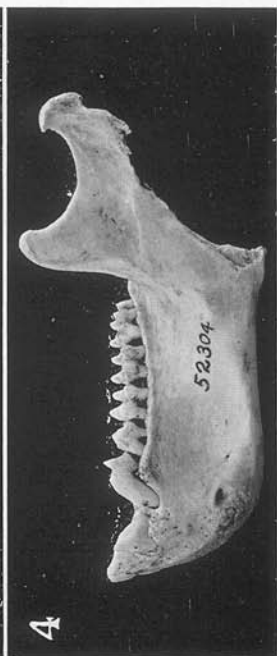
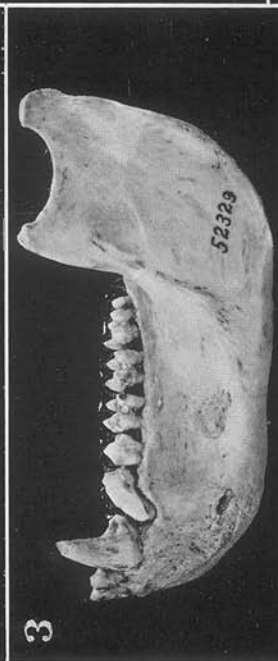
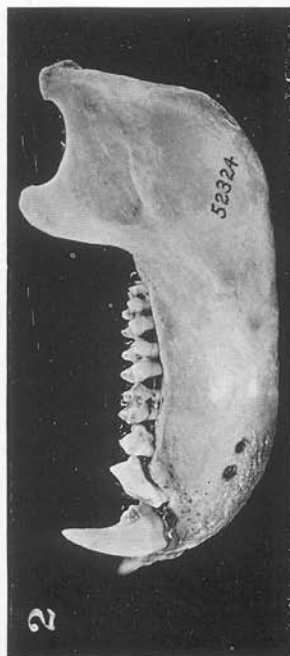
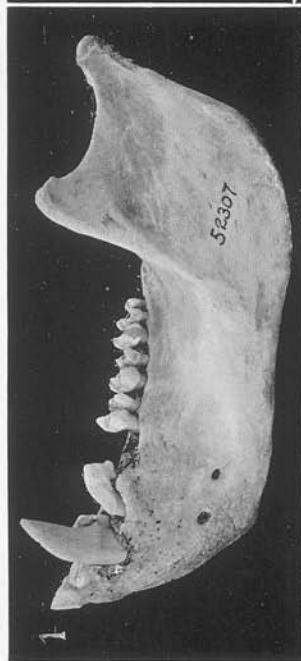


PLATE CXXXI

Colobus powelli brunneus Lönnberg

Comparative crown views of six mandibles.

- Fig. 1. Male adult, Amer. Mus. No. 52307, Faradje, November 23, 1911.
- Fig. 2. Male adult, Amer. Mus. No. 52324, Faradje, December 2, 1911.
- Fig. 3. Male adult, Amer. Mus. No. 52329, Faradje, December 3, 1911.
- Fig. 4. Male adult, Amer. Mus. No. 52304, Faradje, November 23, 1911.
- Fig. 5. Female adult, Amer. Mus. No. 52327, Faradje, December 2, 1911.
- Fig. 6. Female adult, Amer. Mus. No. 52310, Faradje, November 23, 1911.

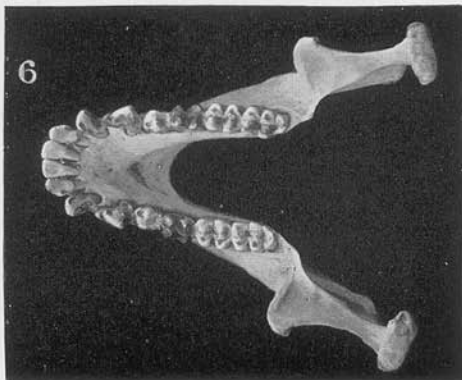
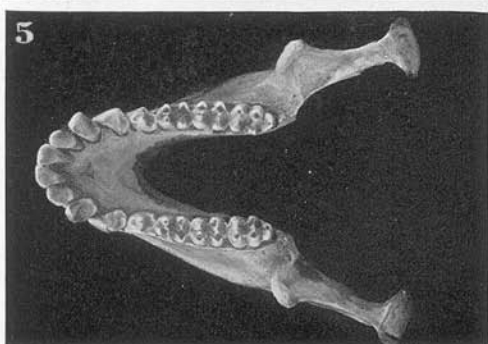
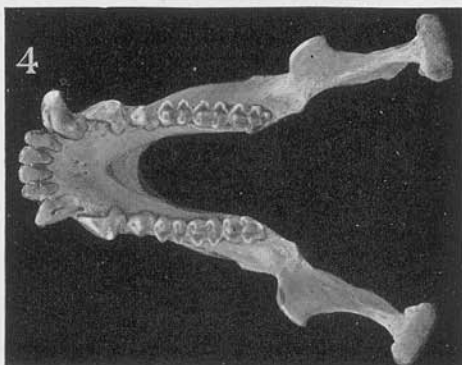
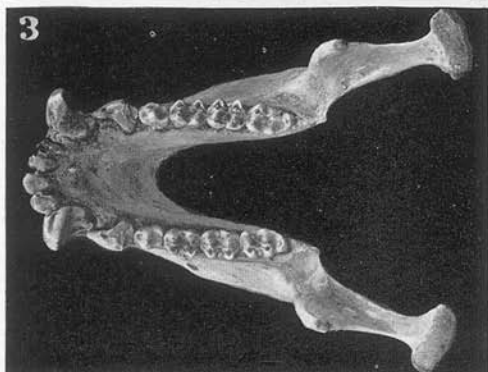
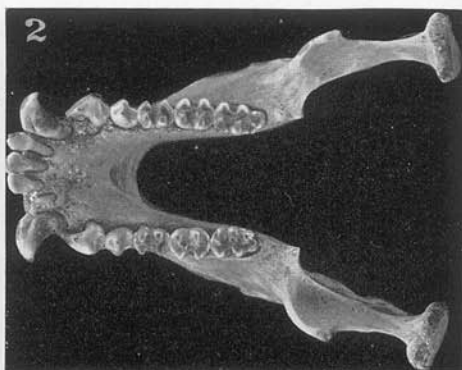
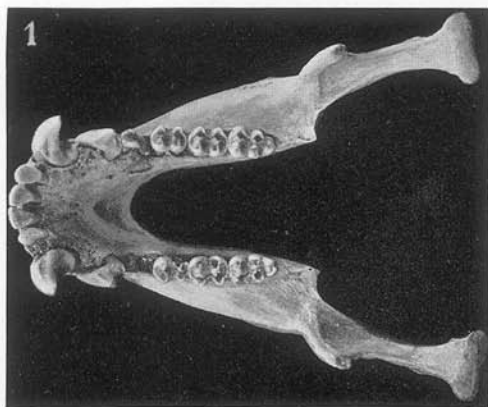


PLATE CXXXII

Colobus abyssinicus ituricus Matschie

Comparative left lateral views of three adult male skulls. Greatest length of skull, 119.8 mm. Compare with Pl. CXXXIII, showing another adult male and two adult female skulls; also with different views to and including Pl. CXLI.

Fig. 1. Male adult, Amer. Mus. No. 52212, Avakubi, February 23, 1914.

Fig. 2. Male adult, Amer. Mus. No. 52252, Faradje, February 5, 1912.

Fig. 3. Male adult, Amer. Mus. No. 52217, Faradje, February 14, 1911.



PLATE CXXXIII

Colobus abyssinicus ituricus Matschie

Comparative left lateral views of one adult male and two adult female skulls. Greatest length of skull, 114.6 mm. Compare with Pl. CXXXII, showing three adult male skulls; also with different views to and including Pl. CXLI.

Fig. 1. Male adult, Amer. Mus. No. 52248, Faradje, October 31, 1912.

Fig. 2. Female adult, Amer. Mus. No. 52226, Faradje, February 18, 1911.

Fig. 3. Female adult, Amer. Mus. No. 52223, Faradje, February 15, 1911.

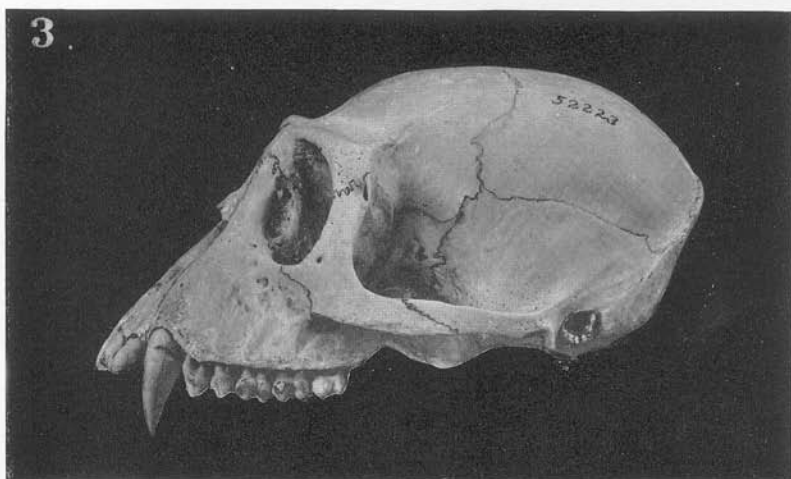
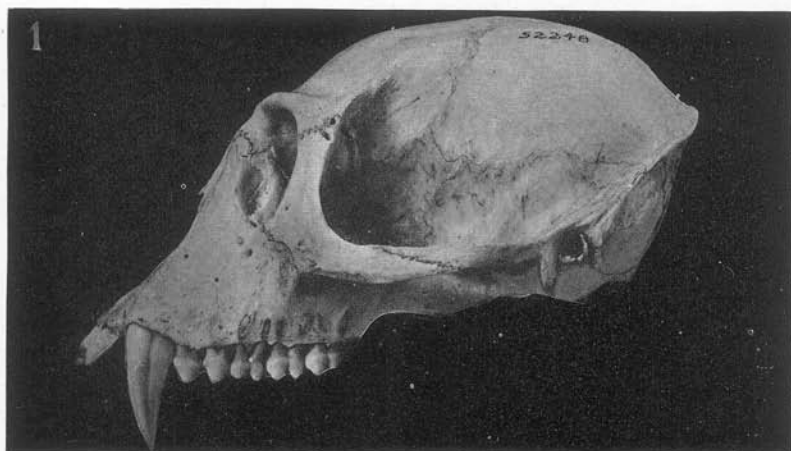


PLATE CXXXIV

Colobus abyssinicus ituricus Matschie

Comparative dorsal views of three adult male skulls. Greatest length of skull, 119.8 mm. Compare with Pl. CXXXV, showing another adult male and two adult female skulls.

Fig. 1. Male adult, Amer. Mus. No. 52212, Avakubi, February 23, 1914.

Fig. 2. Male adult, Amer. Mus. No. 52252, Faradje, February 5, 1912.

Fig. 3. Male adult, Amer. Mus. No. 52217, Faradje, February 14, 1911.

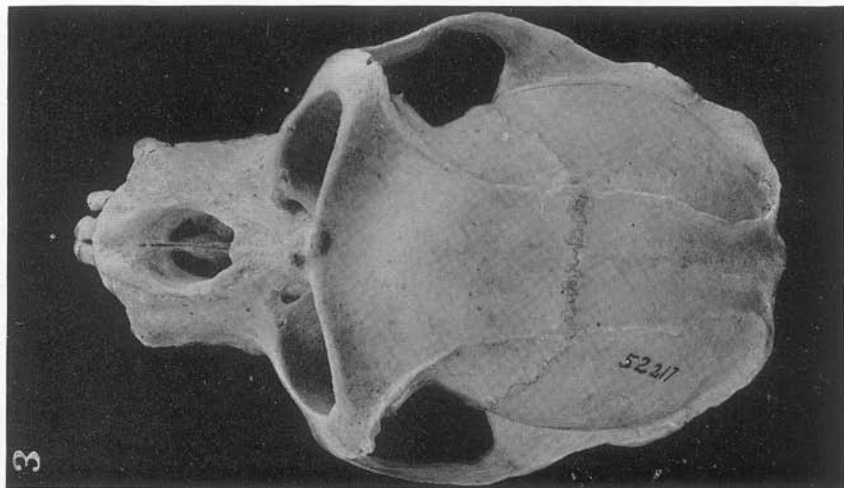
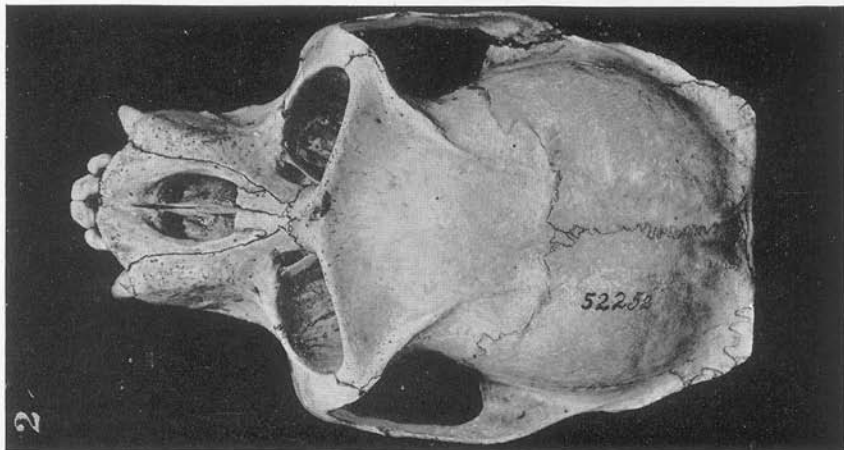
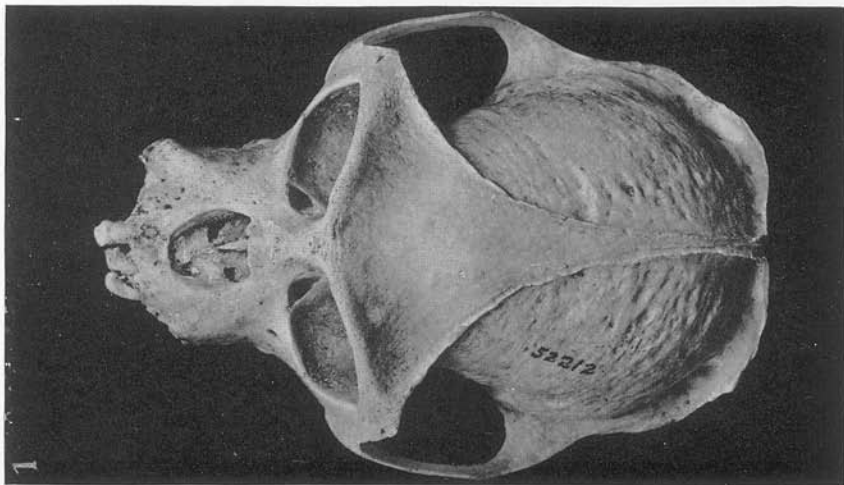


PLATE CXXXV

Colobus abyssinicus ituricus Matschie

Comparative dorsal views of one adult male and two adult female skulls. Greatest length of skull, 114.6 mm. Compare with Pl. CXXXIV, showing three adult male skulls.

- Fig. 1. Male adult, Amer. Mus. No. 52248, Faradje, October 31, 1912.
- Fig. 2. Female adult, Amer. Mus. No. 52226, Faradje, February 18, 1911.
- Fig. 3. Female adult, Amer. Mus. No. 52223, Faradje, February 15, 1911.

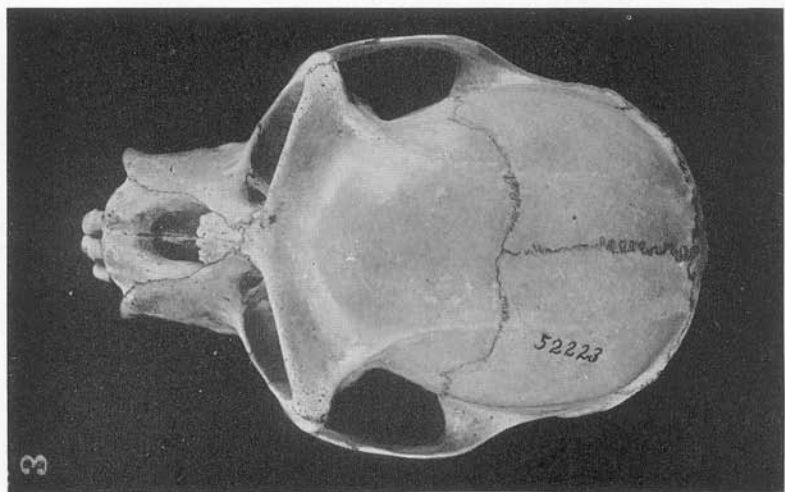
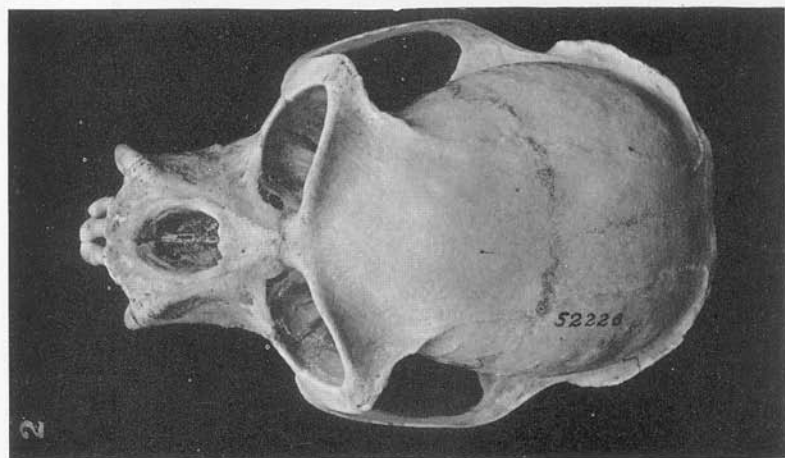
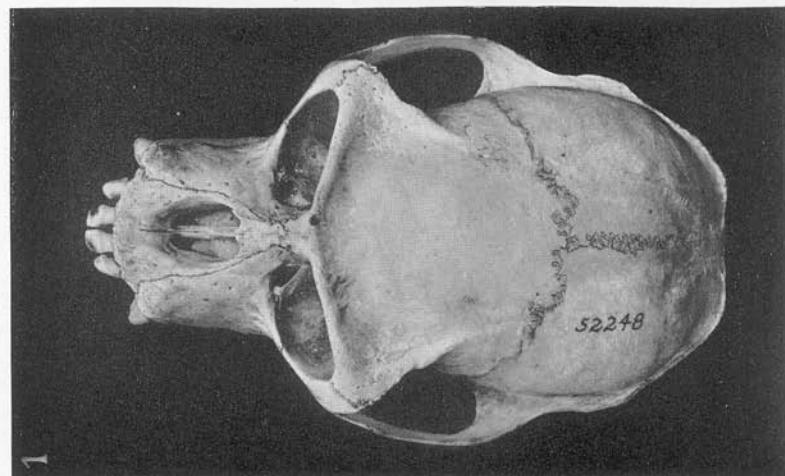


PLATE CXXXVI

Colobus abyssinicus ituricus Matschie

Comparative palatal views of three adult male skulls. Greatest length of skull, 119.8 mm. Compare with Pl. CXXXVII, showing another adult male and two adult female skulls.

Fig. 1. Male adult, Amer. Mus. No. 52212, Avakubi, February 23, 1914.

Fig. 2. Male adult, Amer. Mus. No. 52252, Faradje, February 5, 1912.

Fig. 3. Male adult, Amer. Mus. No. 52217, Faradje, February 14, 1911.

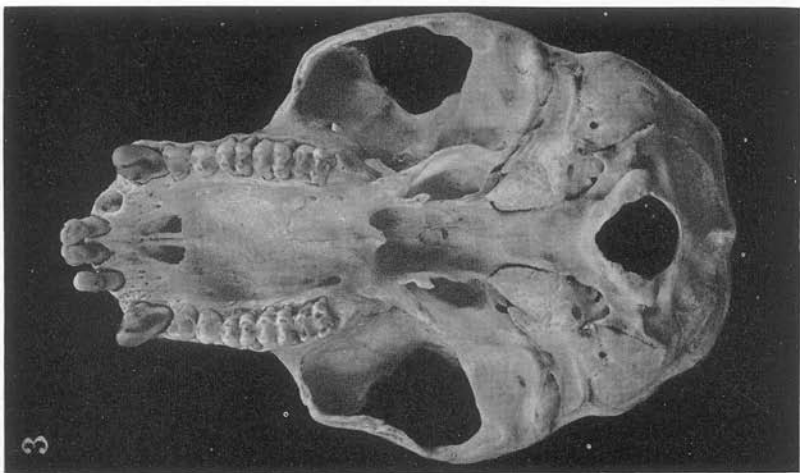
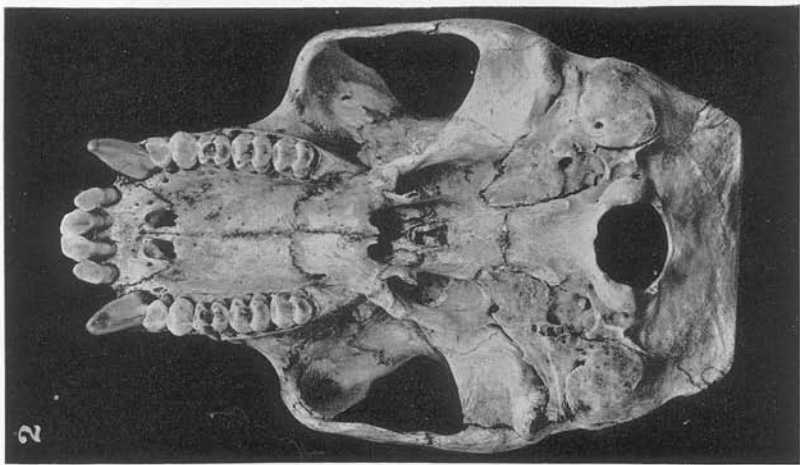
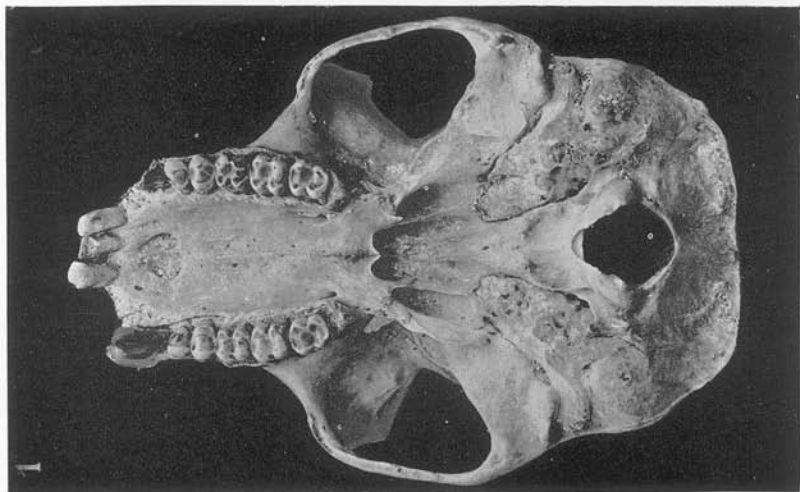


PLATE CXXXVII

Colobus abyssinicus ituricus Matschie

Comparative palatal views of one adult male and two adult female skulls. Greatest length of skull, 114.6 mm. Compare with Pl. CXXXVI, showing three adult male skulls.

Fig. 1. Male adult, Amer. Mus. No. 52248, Faradje, October 31, 1912.

Fig. 2. Female adult, Amer. Mus. No. 52226, Faradje, February 18, 1911.

Fig. 3. Female adult, Amer. Mus. No. 52223, Faradje, February 15, 1911.

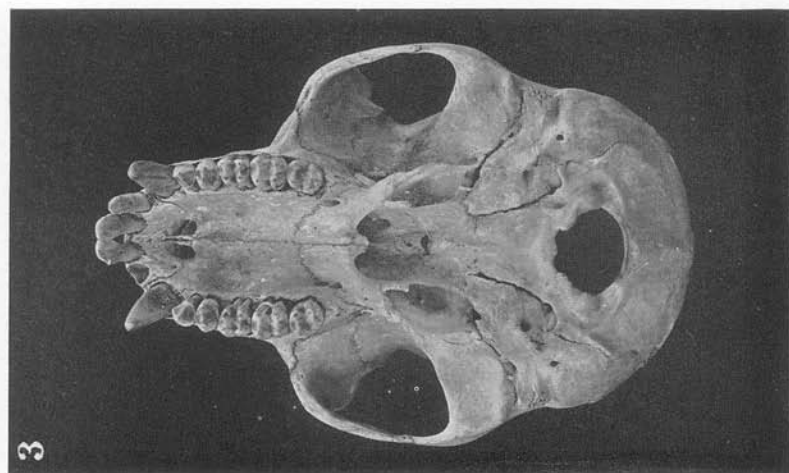
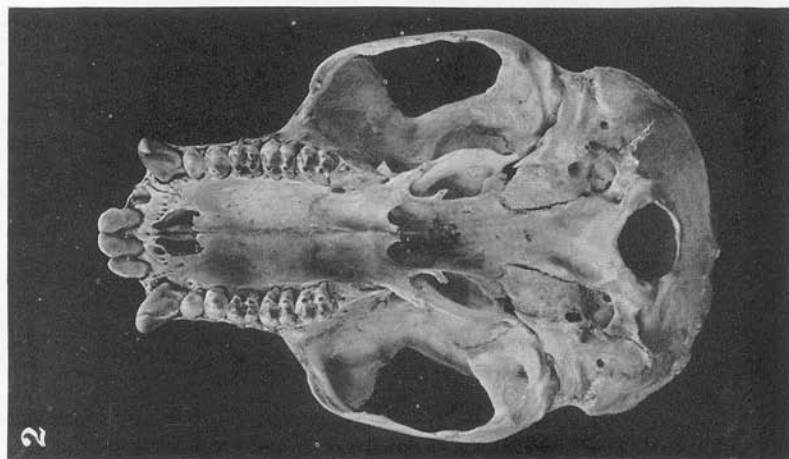
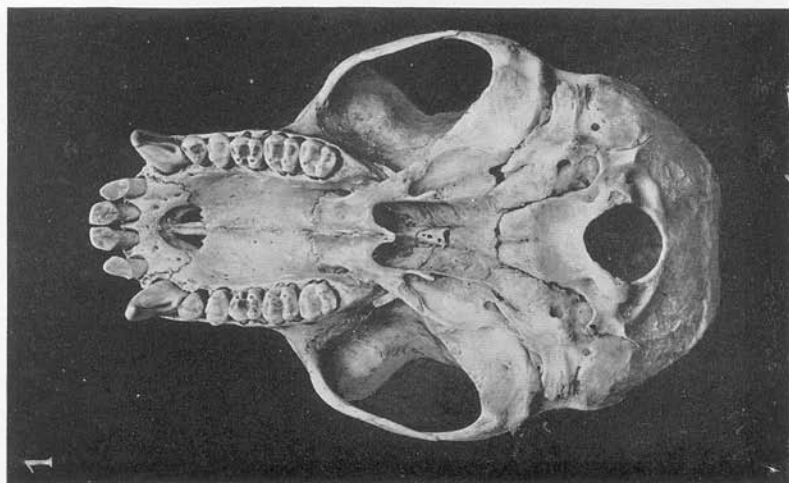


PLATE CXXXVIII

Colobus abyssinicus ituricus Matschie

Comparative front views of six skulls. Greatest length of skull, 119.8 mm.

Fig. 1. Male adult, Amer. Mus. No. 52212, Avakubi, February 23, 1914.

Fig. 2. Male adult, Amer. Mus. No. 52252, Faradje, February 5, 1912.

Fig. 3. Male adult, Amer. Mus. No. 52217, Faradje, February 14, 1911.

Fig. 4. Male adult, Amer. Mus. No. 52248, Faradje, October 31, 1912.

Fig. 5. Female adult, Amer. Mus. No. 52226, Faradje, February 18, 1911.

Fig. 6. Female adult, Amer. Mus. No. 52223, Faradje, February 15, 1913.

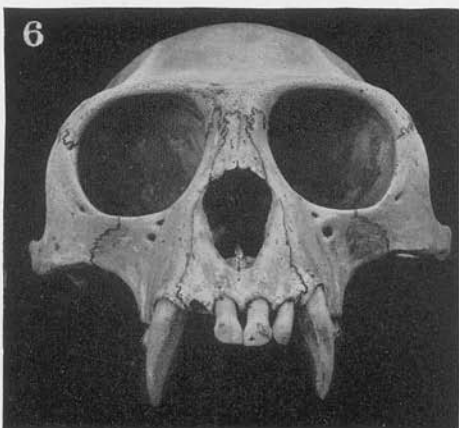
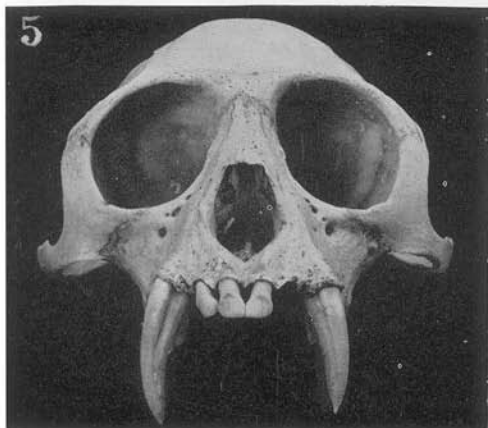
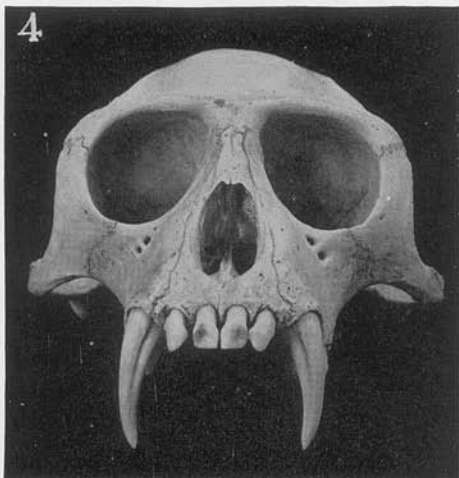
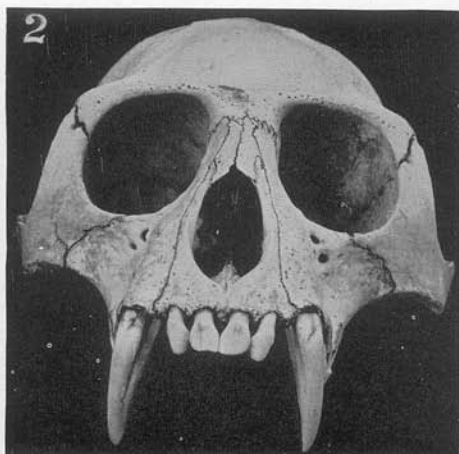
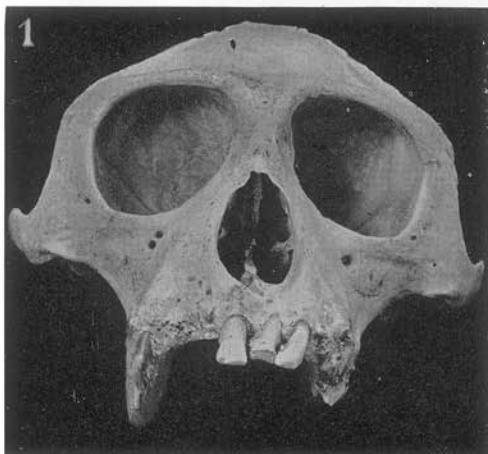


PLATE CXXXIX

Colobus abyssinicus ituricus Matschie

Comparative occipital views of six skulls. Greatest length of skull, 119.8 mm.

Fig. 1. Male adult, Amer. Mus. No. 52212, Avakubi, February 23, 1914.

Fig. 2. Male adult, Amer. Mus. No. 52252, Faradje, February 5, 1912.

Fig. 3. Male adult, Amer. Mus. No. 52217, Faradje, February 14, 1911.

Fig. 4. Male adult, Amer. Mus. No. 52248, Faradje, October 31, 1912.

Fig. 5. Female adult, Amer. Mus. No. 52226, Faradje, February 18, 1911.

Fig. 6. Female adult, Amer. Mus. No. 52223, Faradje, February 15, 1913.

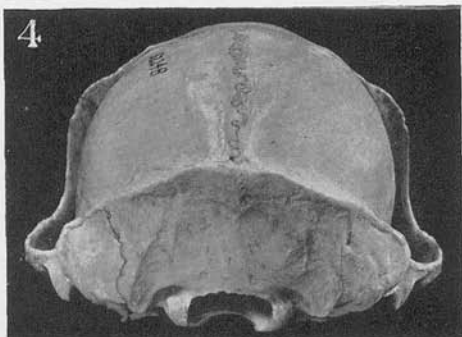
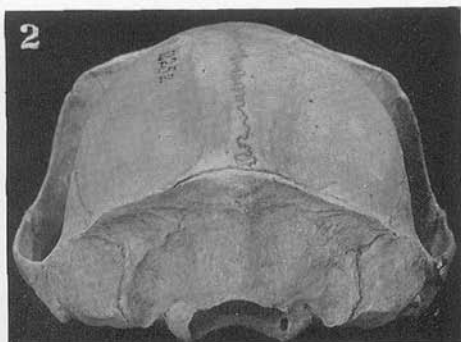
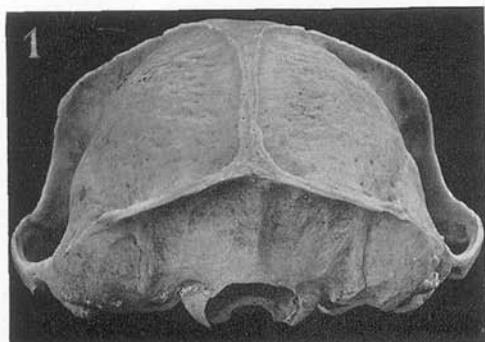


PLATE CXL

Colobus abyssinicus ituricus Matschie

Comparative left lateral views of six mandibles.

- Fig. 1. Male adult, Amer. Mus. No. 52212, Avakubi, February 23, 1914.
- Fig. 2. Male adult, Amer. Mus. No. 52252, Faradje, February 5, 1912.
- Fig. 3. Male adult, Amer. Mus. No. 52217, Faradje, February 14, 1911.
- Fig. 4. Male adult, Amer. Mus. No. 52248, Faradje, October 31, 1912.
- Fig. 5. Female adult, Amer. Mus. No. 52226, Faradje, February 18, 1911.
- Fig. 6. Female adult, Amer. Mus. No. 52223, Faradje, February 15, 1913.

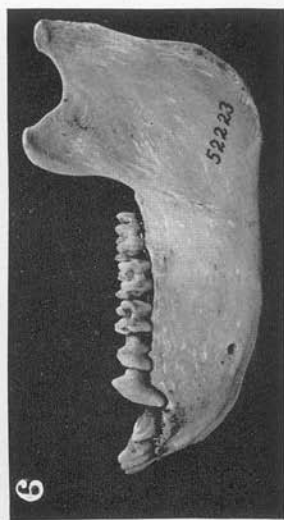
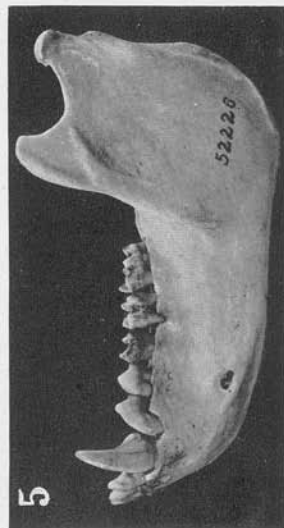
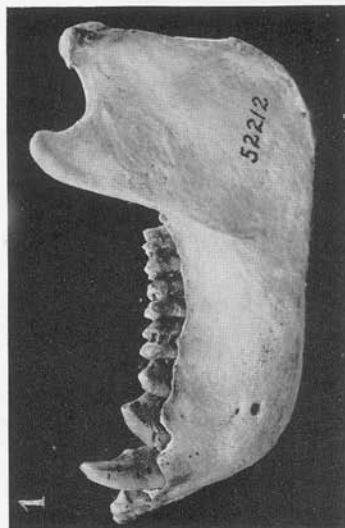


PLATE CXLI

Colobus abyssinicus ituricus Matschie

Comparative crown views of six mandibles.

- Fig. 1. Male adult, Amer. Mus. No. 52212, Avakubi, February 23, 1914.
- Fig. 2. Male adult, Amer. Mus. No. 52252, Faradje, February 5, 1912.
- Fig. 3. Male adult, Amer. Mus. No. 52217, Faradje, February 14, 1911.
- Fig. 4. Male adult, Amer. Mus. No. 52248, Faradje, October 31, 1912.
- Fig. 5. Female adult, Amer. Mus. No. 52226, Faradje, February 18, 1911.
- Fig. 6. Female adult, Amer. Mus. No. 52223, Faradje, February 15, 1913.

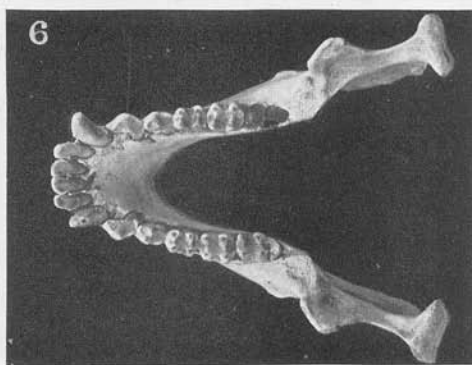
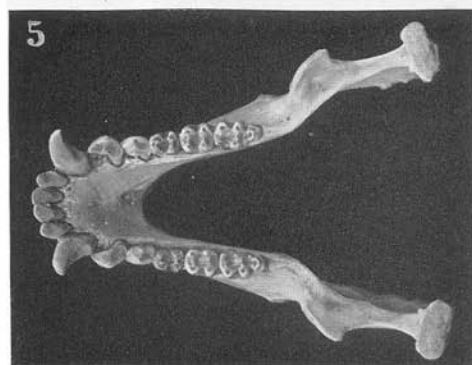
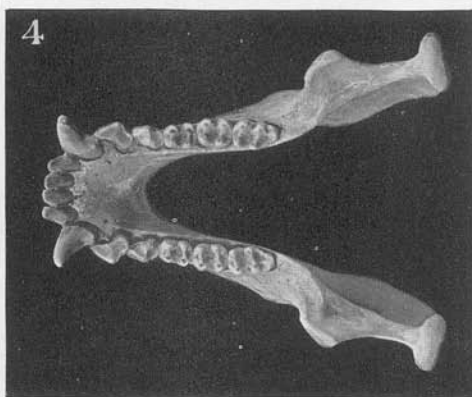
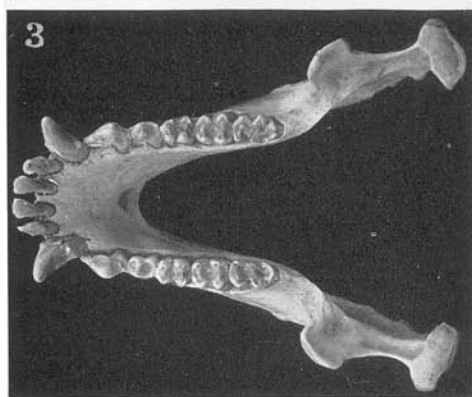
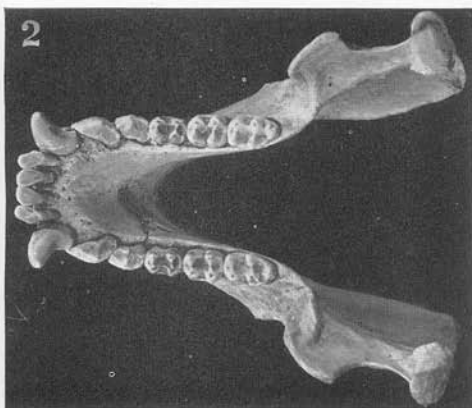
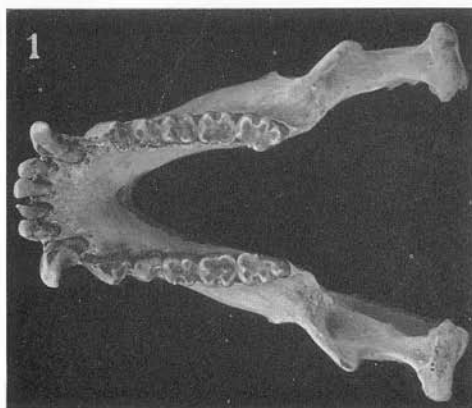


PLATE CXLII

Colobus angolensis cottoni Lydekker

Comparative left lateral views of three adult male skulls. Greatest length of skull, 122.8 mm. Compare with Pl. CXLIII, showing another adult male and two adult female skulls; also with different views to and including Pl. CLI.

Fig. 1. Male adult, Amer. Mus. No. 52163, Avakubi, April 14, 1914.

Fig. 2. Male adult, Amer. Mus. No. 52160, Akenge, October 21, 1913.

Fig. 3. Male adult, Amer. Mus. No. 52162, Akenge, October 28, 1913.



PLATE CXLIII

Colobus angolensis coltoni Lydekker

Comparative left lateral views of one adult male and two adult female skulls. Greatest length of skull, 118.7 mm. Compare with Pl. CXLII, showing three adult male skulls; also with different views to and including Pl. CLI.

- Fig. 1. Male adult, Amer. Mus. No. 52161, Akenge, October 23, 1913.
- Fig. 2. Female adult, Amer. Mus. No. 52146, Akenge, October 2, 1913.
- Fig. 3. Female adult, Amer. Mus. No. 52153, Akenge, October 7, 1913.

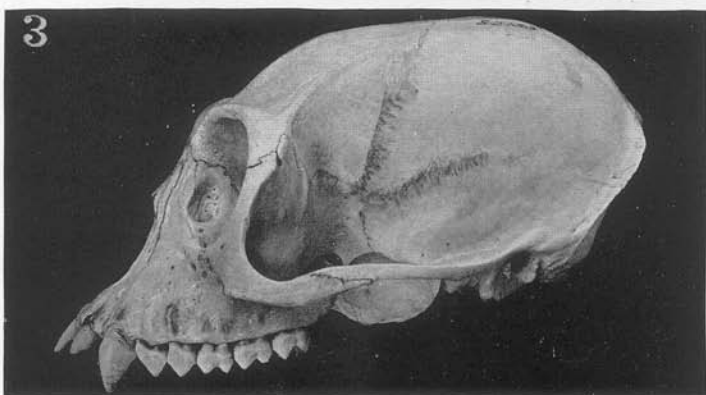


PLATE CXLIV

Colobus angolensis cottoni Lydekker

Comparative dorsal views of three adult male skulls. Greatest length of skull, 122.8 mm. Compare with Pl. CXLV, showing another adult male and two adult female skulls.

Fig. 1. Male adult, Amer. Mus. No. 52163, Avakubi, April 14, 1914.

Fig. 2. Male adult, Amer. Mus. No. 52160, Akenge, October 21, 1913.

Fig. 3. Male adult, Amer. Mus. No. 52162, Akenge, October 28, 1913.

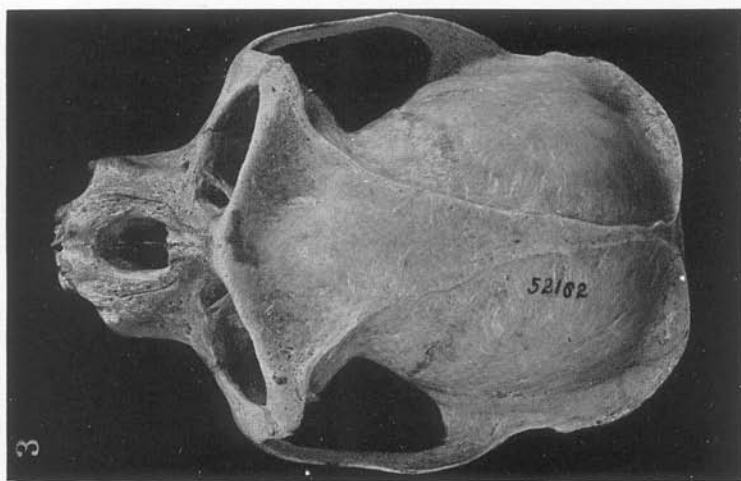
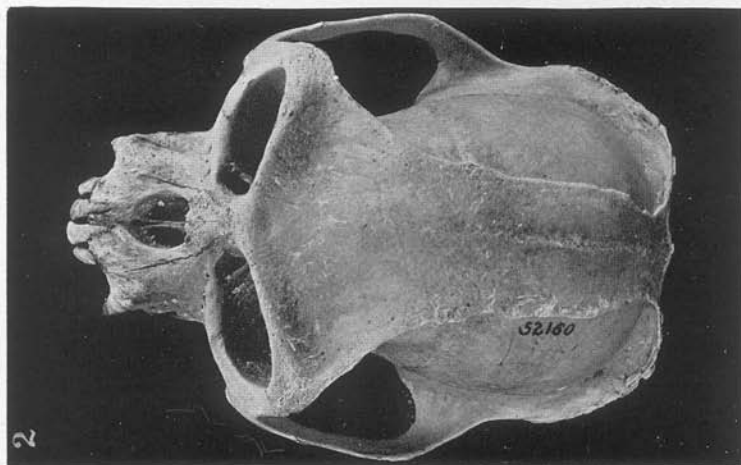
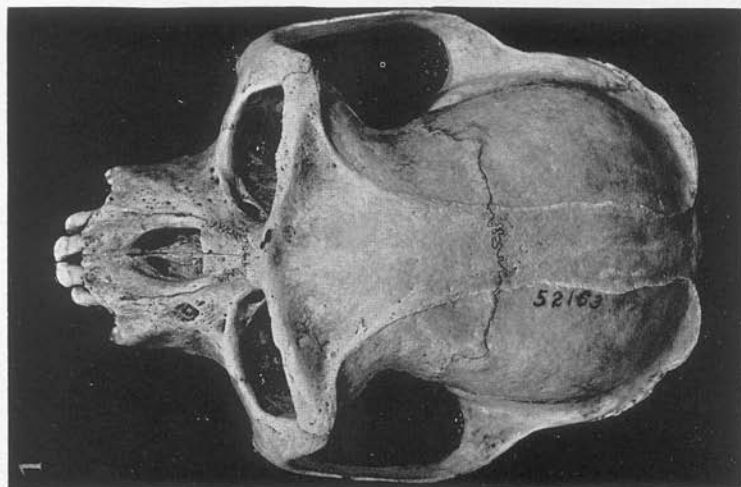


PLATE CXLV

Colobus angolensis cottoni Lydekker

Comparative dorsal views of one adult male and two adult female skulls. Greatest length of skull, 118.7 mm. Compare with Pl. CXLIV, showing three adult male skulls.

- Fig. 1. Male adult, Amer. Mus. No. 52161, Akenge, October 23, 1913.
- Fig. 2. Female adult, Amer. Mus. No. 52146, Akenge, October 2, 1913.
- Fig. 3. Female adult, Amer. Mus. No. 52153, Akenge, October 7, 1913.

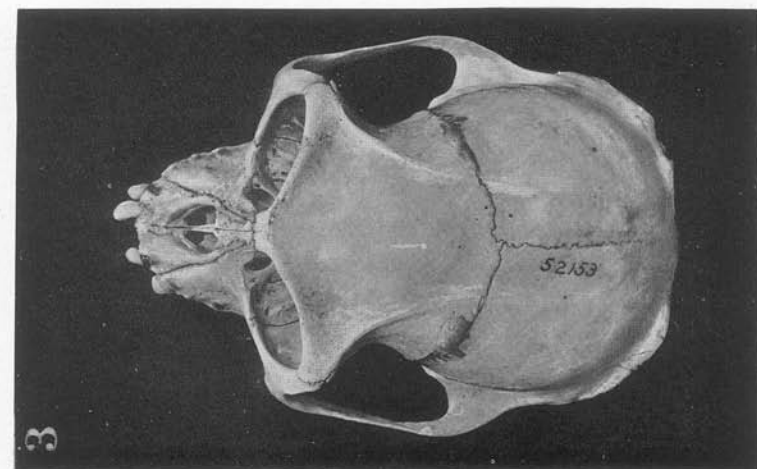
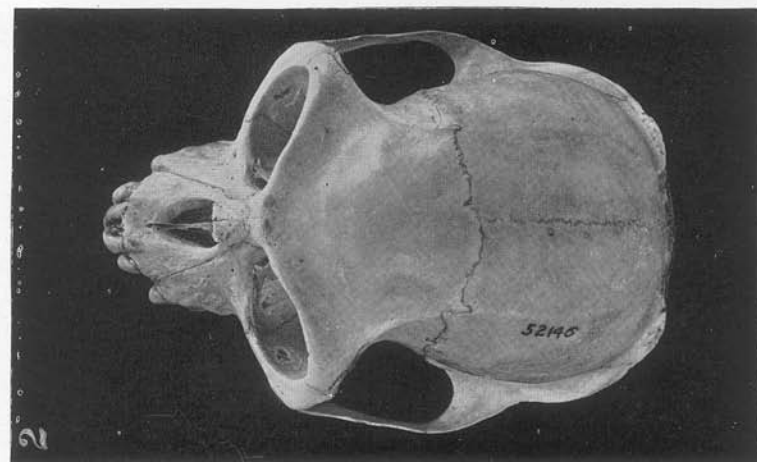
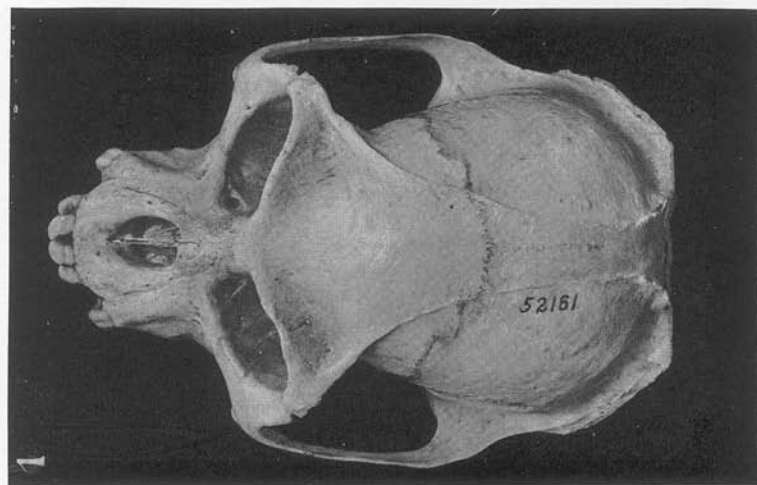


PLATE CXLVI

Colobus angolensis cottoni Lydekker

Comparative palatal views of three adult male skulls. Greatest length of skull, 122.8 mm. Compare with Pl. CXLVII, showing another adult male and two adult female skulls.

Fig. 1. Male adult, Amer. Mus. No. 52163, Avakubi, April 14, 1914.

Fig. 2. Male adult, Amer. Mus. No. 52160, Akenge, October 21, 1913.

Fig. 3. Male adult, Amer. Mus. No. 52162, Akenge, October 28, 1913.

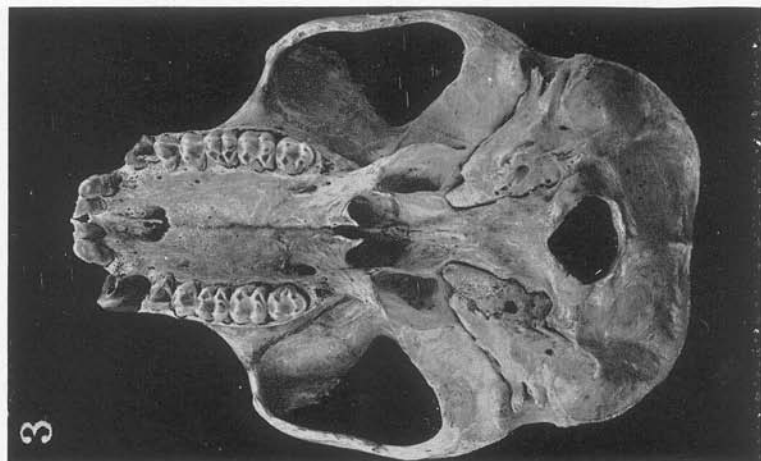
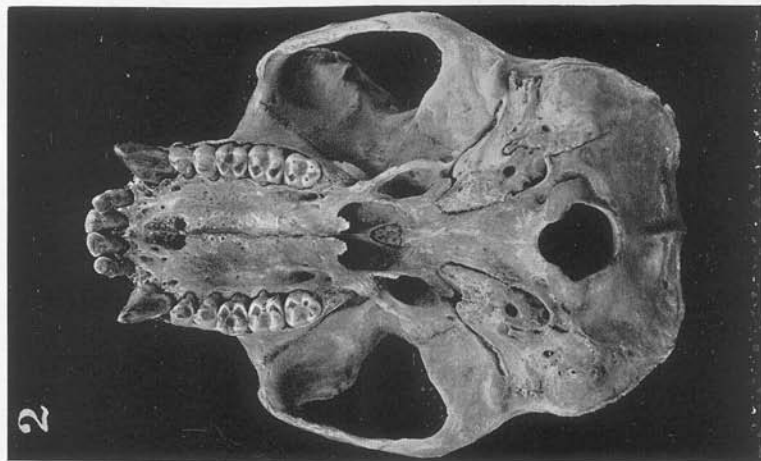
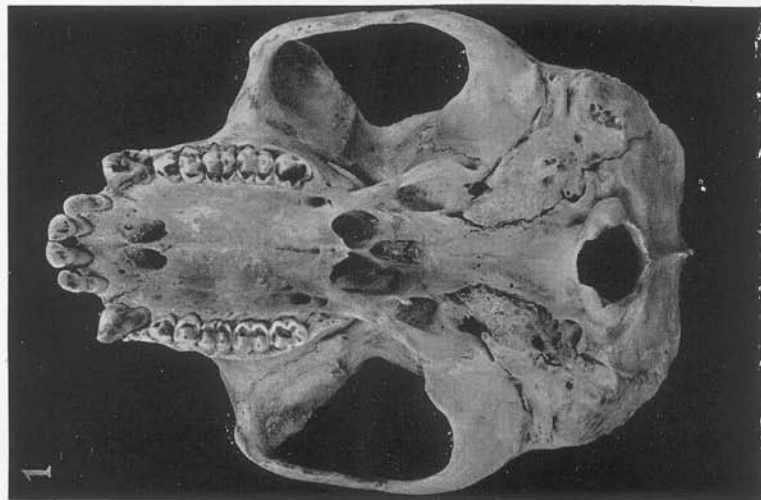


PLATE CXLVII

Colobus angolensis cottoni Lydekker

Comparative palatal views of another adult male and two adult female skulls. Greatest length of skull, 118.7 mm. Compare with Pl. CXLVI, showing three adult male skulls.

Fig. 1. Male adult, Amer. Mus. No. 52161, Akenge, October 23, 1913.

Fig. 2. Female adult, Amer. Mus. No. 52146, Akenge, October 2, 1913.

Fig. 3. Female adult, Amer. Mus. No. 52153, Akenge, October 7, 1913.

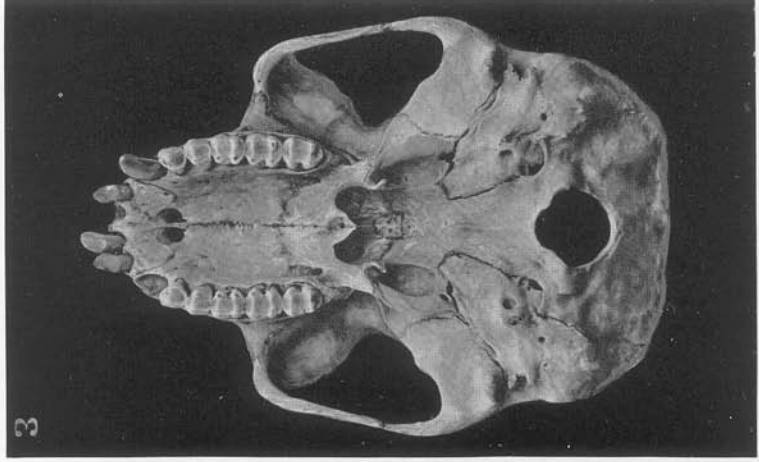
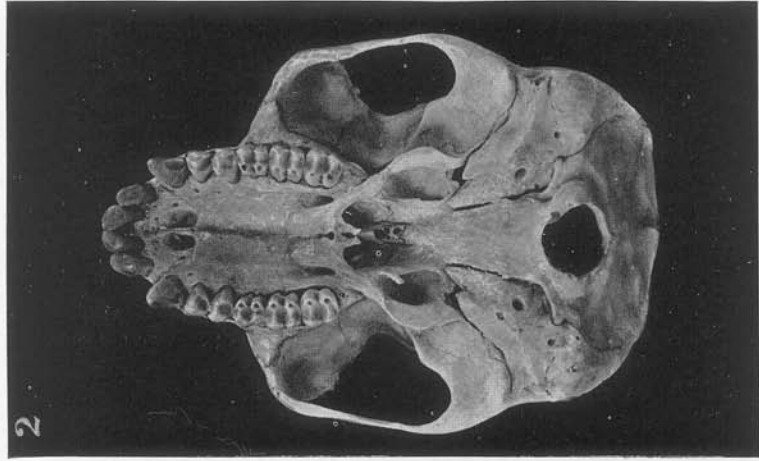
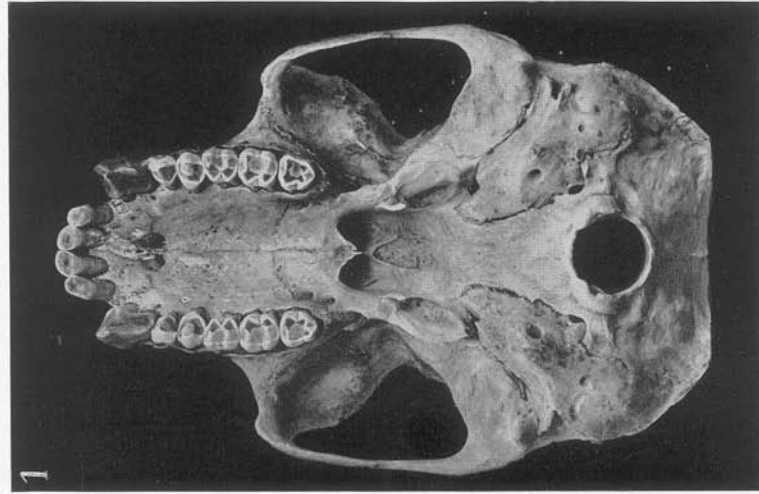


PLATE CXLVIII

Colobus angolensis cottoni Lydekker

Comparative front views of six skulls. Greatest length of skull, 122.8 mm.

Fig. 1. Male adult, Amer. Mus. No. 52163, Avakubi, April 14, 1914.

Fig. 2. Male adult, Amer. Mus. No. 52160, Akenge, October 21, 1913.

Fig. 3. Male adult, Amer. Mus. No. 52162, Akenge, October 28, 1913.

Fig. 4. Male adult, Amer. Mus. No. 52161, Akenge, October 23, 1913.

Fig. 5. Female adult, Amer. Mus. No. 52146, Akenge, October 2, 1913.

Fig. 6. Female adult, Amer. Mus. No. 52153, Akenge, October 7, 1913.



PLATE CXLIX

Colobus angolensis cottoni Lydekker

Comparative occipital views of six skulls. Greatest length of skull, 122.8 mm.

- Fig. 1. Male adult, Amer. Mus. No. 52163, Avakubi, April 14, 1914.
- Fig. 2. Male adult, Amer. Mus. No. 52160, Akenge, October 21, 1913.
- Fig. 3. Male adult, Amer. Mus. No. 52162, Akenge, October 28, 1913.
- Fig. 4. Male adult, Amer. Mus. No. 52161, Akenge, October 23, 1913.
- Fig. 5. Female adult, Amer. Mus. No. 52146, Akenge, October 2, 1913.
- Fig. 6. Female adult, Amer. Mus. No. 52153, Akenge, October 7, 1913.

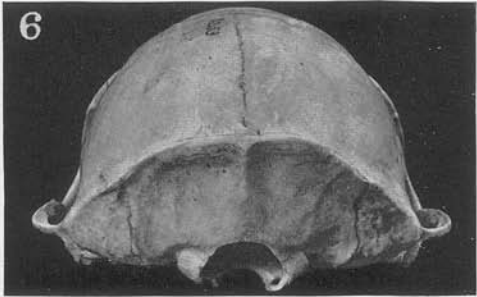
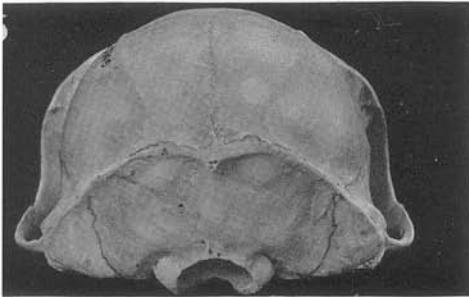
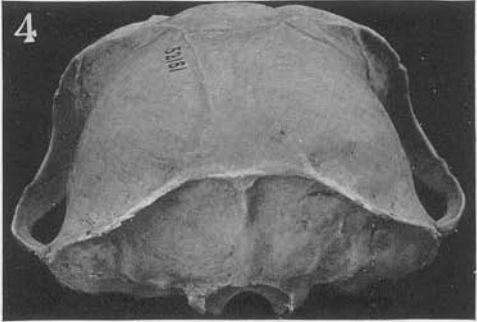
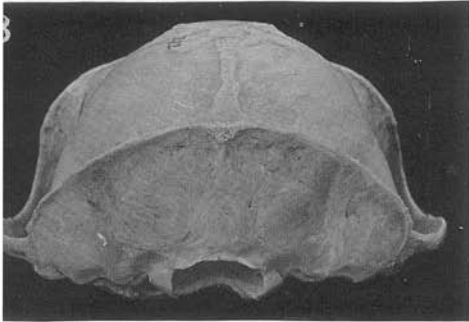
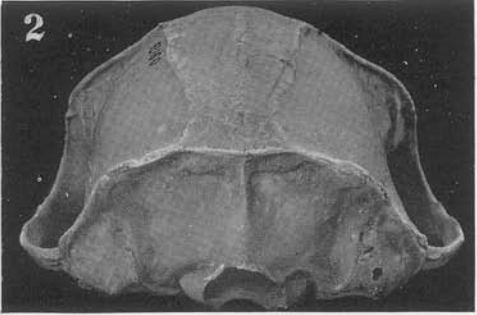
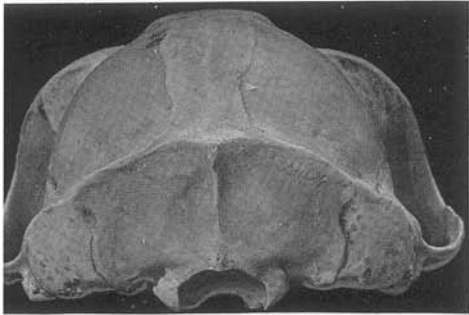


PLATE CL

Colobus angolensis cottoni Lydekker

Comparative left lateral views of six mandibles.

- Fig. 1. Male adult, Amer. Mus. No. 52163, Avakubi, April 14, 1914.
- Fig. 2. Male adult, Amer. Mus. No. 52160, Akenge, October 21, 1913.
- Fig. 3. Male adult, Amer. Mus. No. 52162, Akenge, October 28, 1913.
- Fig. 4. Male adult, Amer. Mus. No. 52161, Akenge, October 23, 1913.
- Fig. 5. Female adult, Amer. Mus. No. 52146, Akenge, October 2, 1913.
- Fig. 6. Female adult, Amer. Mus. No. 52153, Akenge, October 7, 1913.

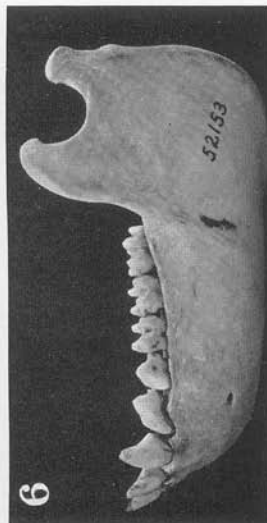
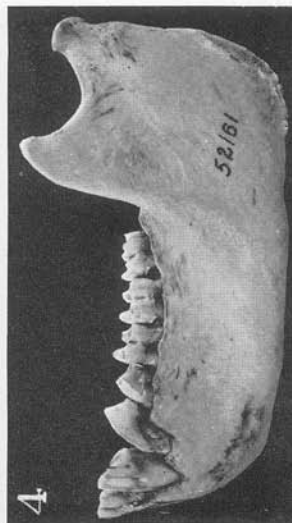
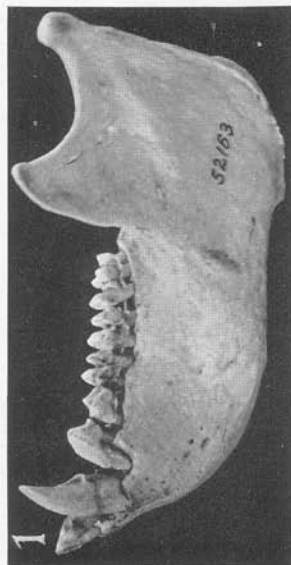


PLATE CLI

Colobus angolensis cottoni Lydekker

Comparative crown views of six mandibles.

- Fig. 1. Male adult, Amer. Mus. No. 52163, Avakubi, April 14, 1914.
- Fig. 2. Male adult, Amer. Mus. No. 52160, Akenge, October 21, 1913.
- Fig. 3. Male adult, Amer. Mus. No. 52162, Akenge, October 28, 1913.
- Fig. 4. Male adult, Amer. Mus. No. 52161, Akenge, October 23, 1913.
- Fig. 5. Female adult, Amer. Mus. No. 52146, Akenge, October 2, 1913.
- Fig. 6. Female adult, Amer. Mus. No. 52153, Akenge, October 7, 1913.

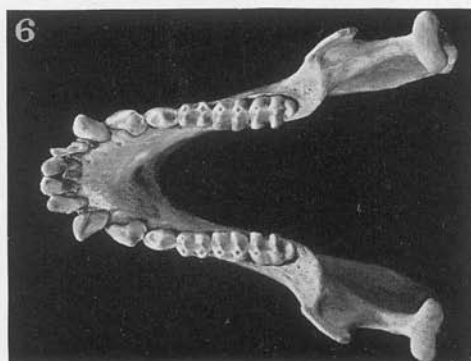
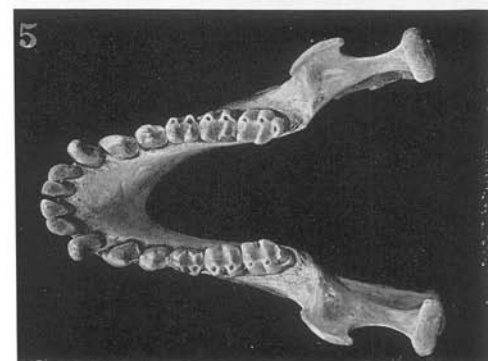
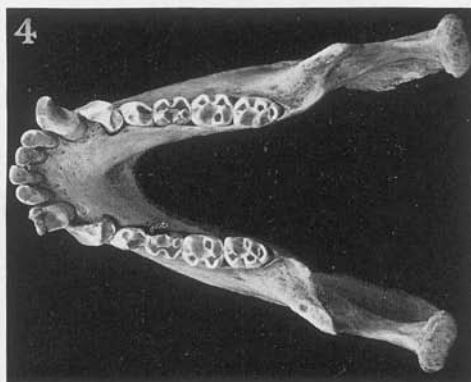
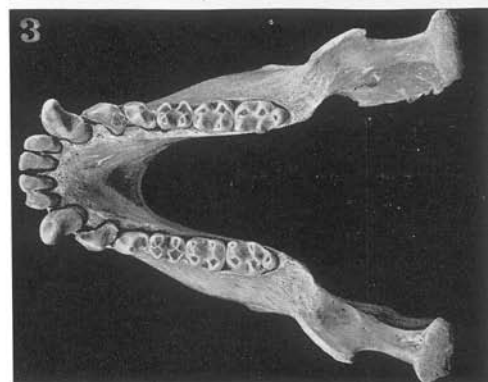
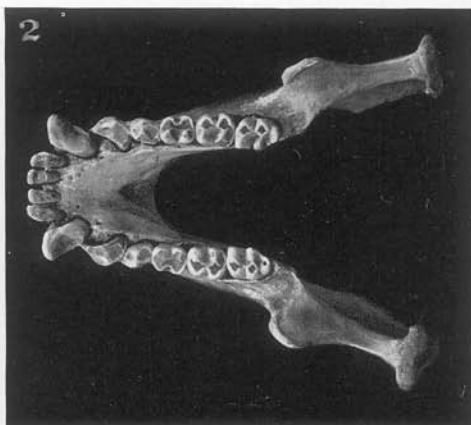
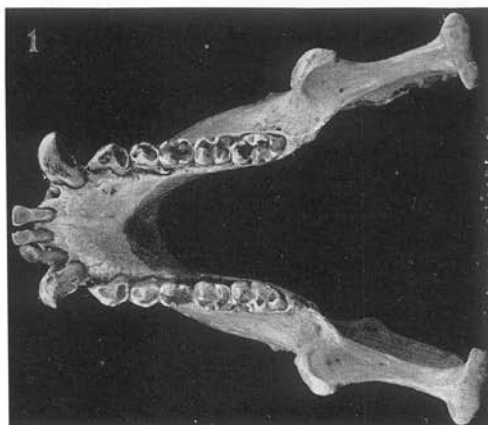
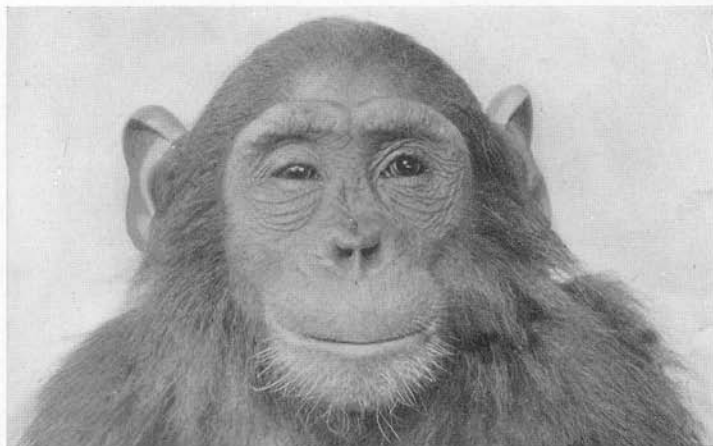


PLATE CLII

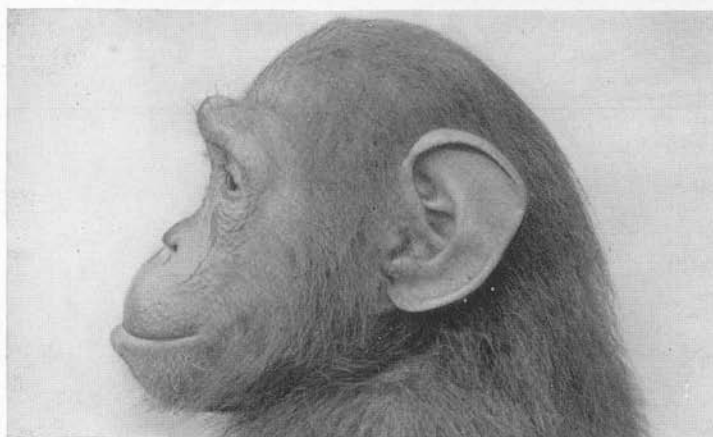
Pan schweinfurthii (Giglioli)

Male subadult, Amer. Mus. No. 51391, Niapu, November 12, 1913. Total length of animal, 550 mm. Specimen in the flesh.

Figs. 1, 2, and 3. Front, side, and three-quarter views of head.



1



2



3

PLATE CLIII

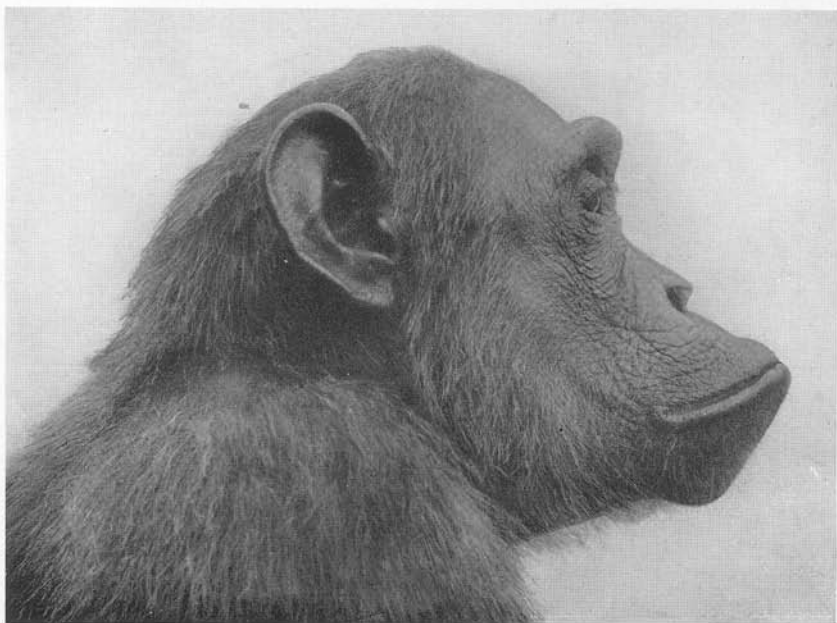
Pan schweinfurthii (Giglioli)

Male adult, Amer. Mus. No. 51382, Niapu, November 14, 1913. Total length of animal, 790 mm. Specimen in the flesh.

Figs. 1 and 2. Front and side views of head. Compare with Pl. CLIV, fig. 1 for three-quarter view.



1



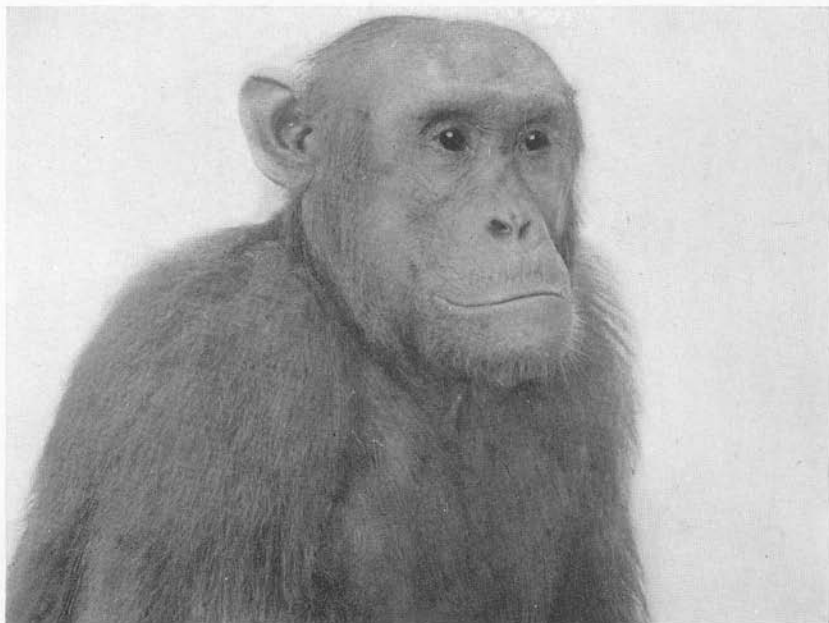
2

PLATE CLIV

Pan schweinfurthii (Giglioli)

Fig. 1. Male adult, Amer. Mus. No. 51382, Niapu, November 14, 1913. Total length of animal, 790 mm. Three-quarter view of head. Compare with Pl. CLIII for front and side views.

Fig. 2. Female adult, Amer. Mus. No. 52132, Akenge, October 4, 1913. Total length of animal, 850 mm. Three-quarter view of head. Compare with Pl. CLV for front and side views. Specimens in the flesh.



1



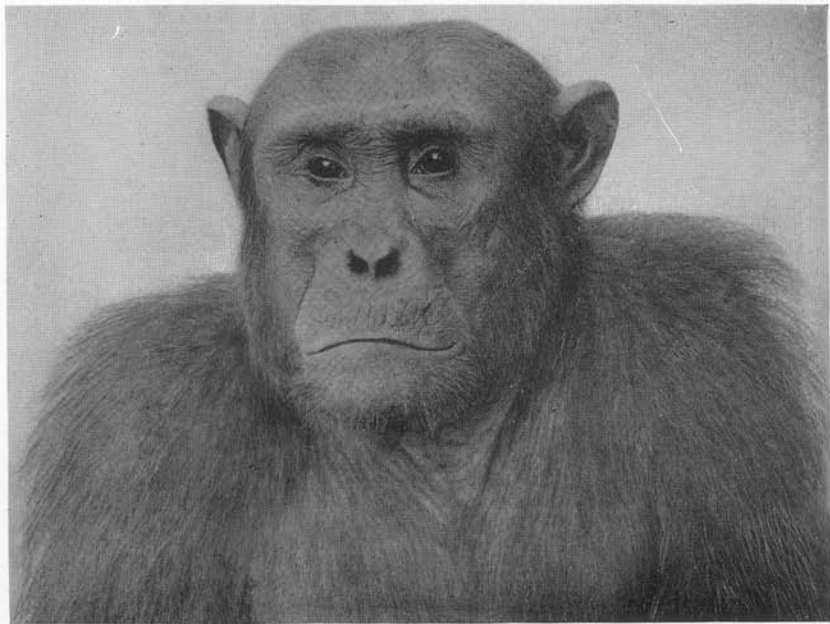
2

PLATE CLV

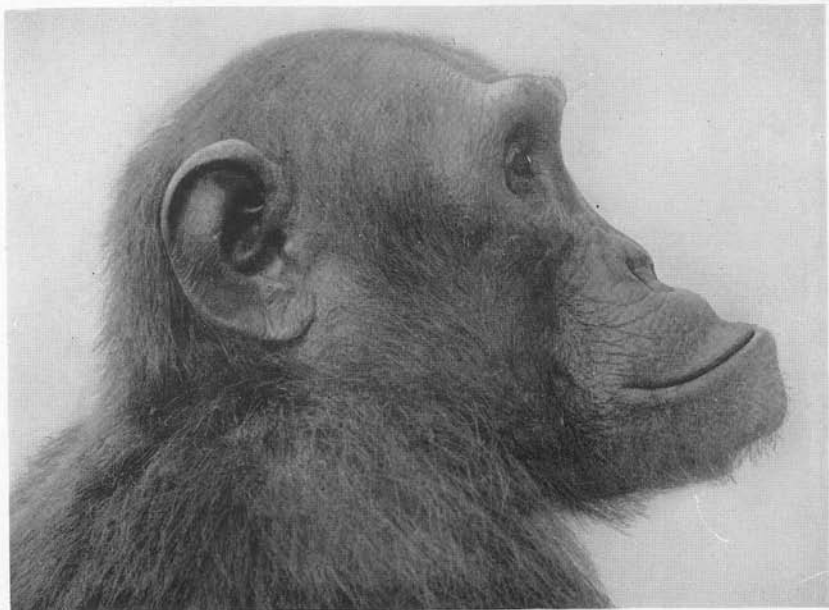
Pan schweinfurthii (Giglioli)

Female adult, Amer. Mus. No. 52132, Akenge, October 4, 1913. Total length of animal, 850 mm. Specimen in the flesh.

Figs. 1 and 2. Front and side views of head. Compare with Pl. CLIV, fig. 2 for three-quarter view.



1



2

PLATE CLVI

Pan schweinfurthii (Giglioli)

Female adult, Amer. Mus. No. 52132, Akenge, October 4, 1913. Total length of animal, 850 mm. Showing general body proportions. Same animal figured on Pls. CLIV, fig. 2 and CLV. Specimen in the flesh.

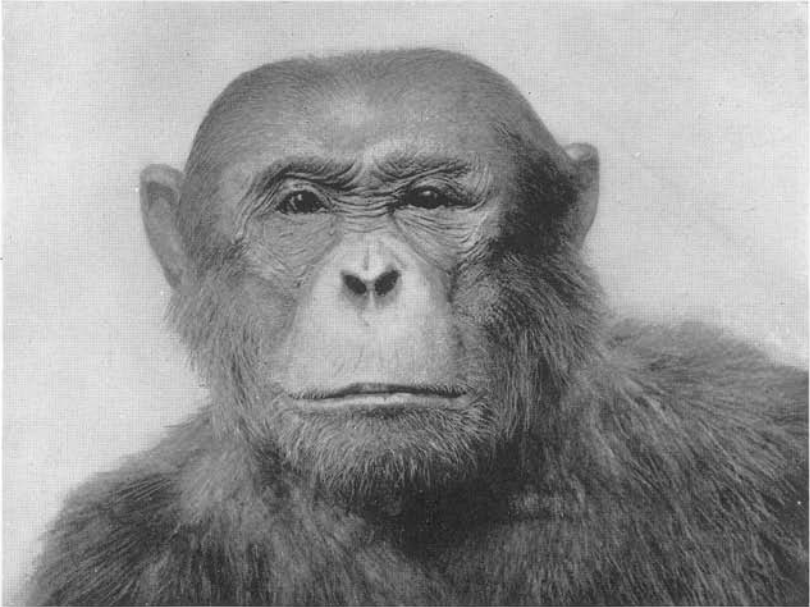


PLATE CLVII

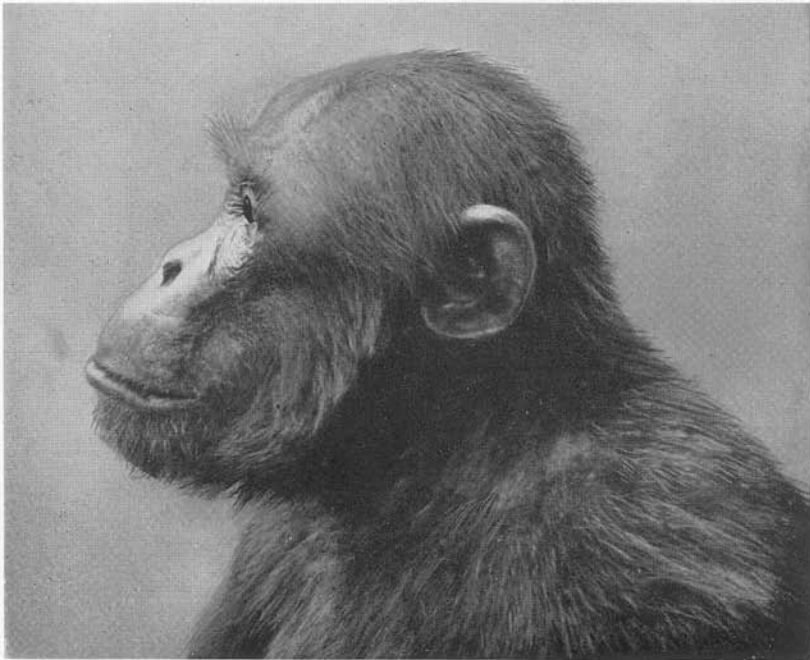
Pan schweinfurthii (Giglioli)

Male adult, Amer. Mus. No. 51278, Akenge, September 15, 1913. Total length of animal, 840 mm. Specimen in the flesh.

Figs. 1 and 2. Front and side views of head. Compare with Pl. CLVIII, fig. 1 for three-quarter view.



1



2

PLATE CLVIII

Pan schweinfurthii (Giglioli)

Fig. 1. Male adult, Amer. Mus. No. 51278, Akenge, September 15, 1913. Total length of animal, 840 mm. Three-quarter view of head. Compare with Pl. CLVII for front and side views.

Fig. 2. Female adult, Amer. Mus. No. 51376, Faradje, April 1, 1911. Total length of animal, 830 mm. Three-quarter view of head. Compare with Pl. CLIX for front and side views. Specimens in the flesh.



1



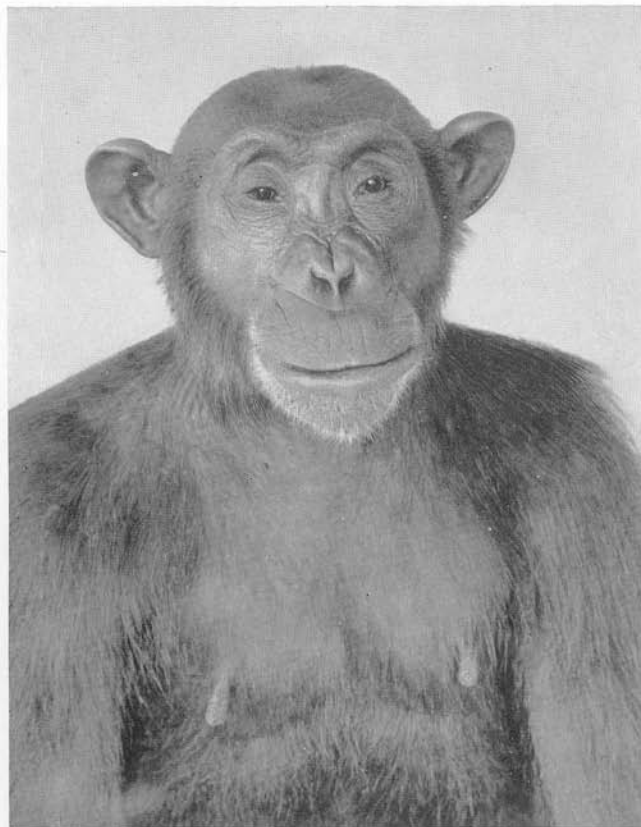
2

PLATE CLIX

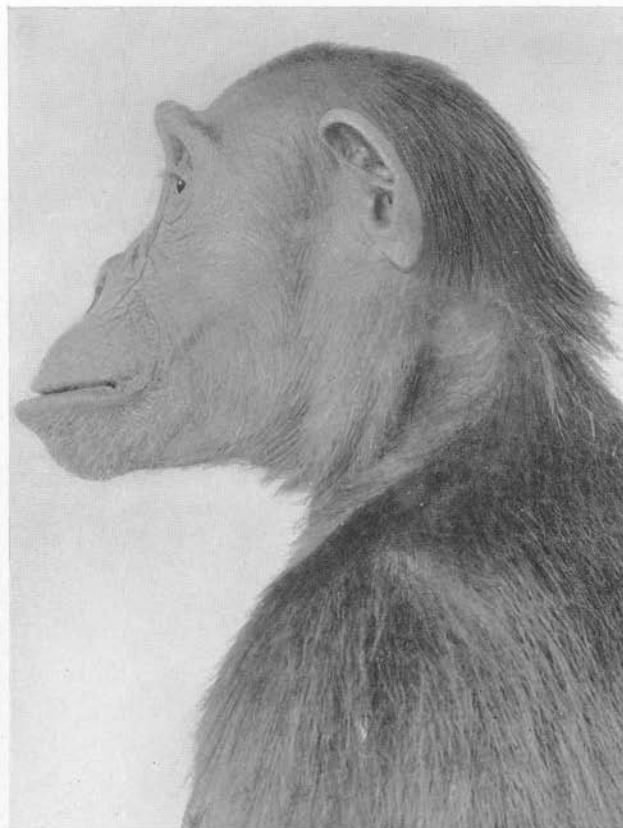
Pan schweinfurthii (Giglioli)

Female adult, Amer. Mus. No. 51376, Faradje, April 1, 1911. Total length of animal, 830 mm. Specimen in the flesh.

Figs. 1 and 2. Front and side views of head. Compare with Pl. CLVIII, fig. 2 for three-quarter view.



1



2

PLATE CLX

Pan schweinfurthii (Giglioli)

Female subadult, Amer. Mus. No. 51392, Faradje, April 3, 1911. Total length of animal, 700 mm. Specimen in the flesh.

Figs. 1, 2, and 3. Front, side, and three-quarter views of head.



1



2



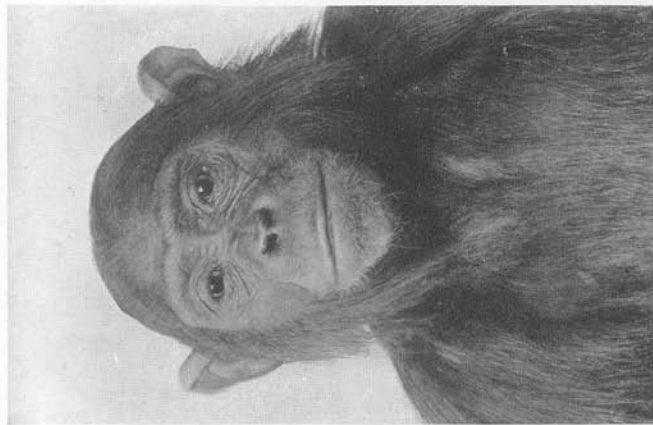
3

PLATE CLXI

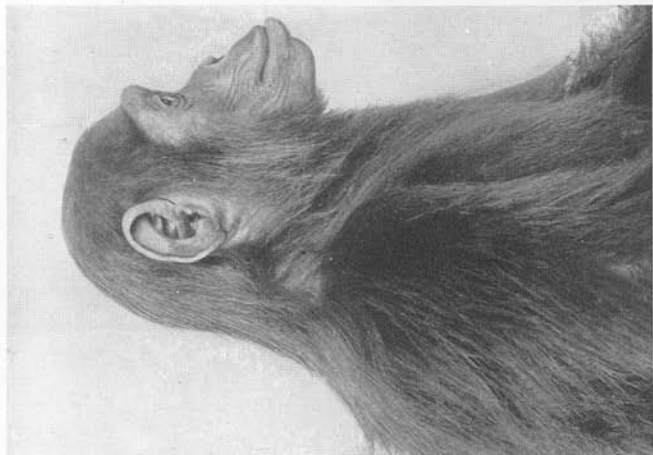
Pan schweinfurthii (Giglioli)

Female juvenile, Amer. Mus. No. 51386, Faradje, April 3, 1911. Total length of animal, 608 mm. Specimen in the flesh.

Figs. 1, 2, and 3. Front, side, and three-quarter views of head.



1



2



3

PLATE CLXII

Pan schweinfurthii (Giglioli)

Male juvenile, Amer. Mus. No. 51206, Faradje, November 10, 1912. Total length of animal, 370 mm. Specimen in the flesh.

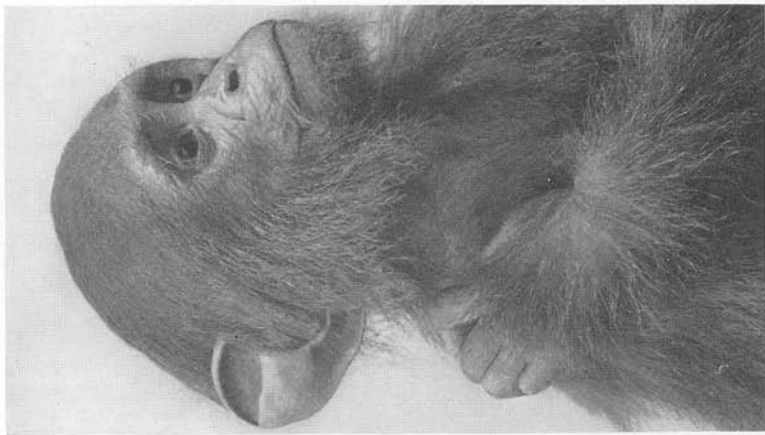
Figs. 1, 2 and 3. Front, side, and three-quarter views of head.



1



2



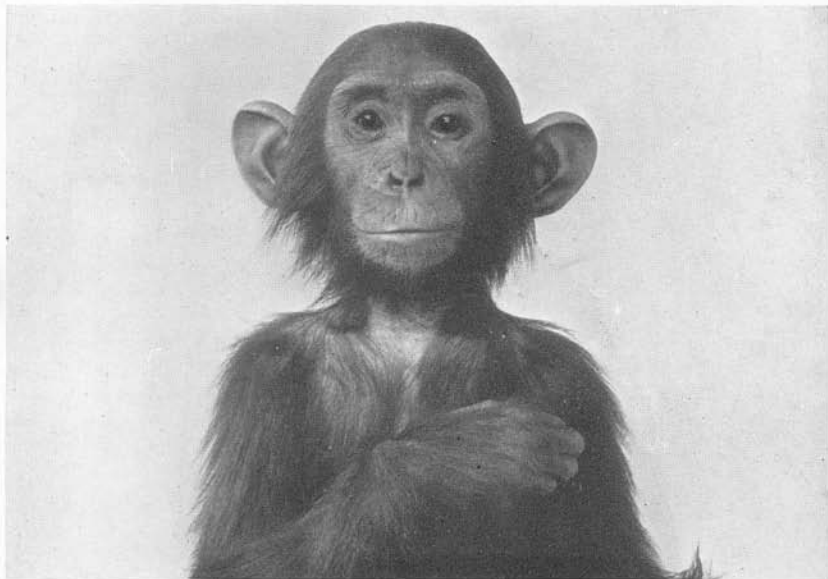
3

PLATE CLXIII

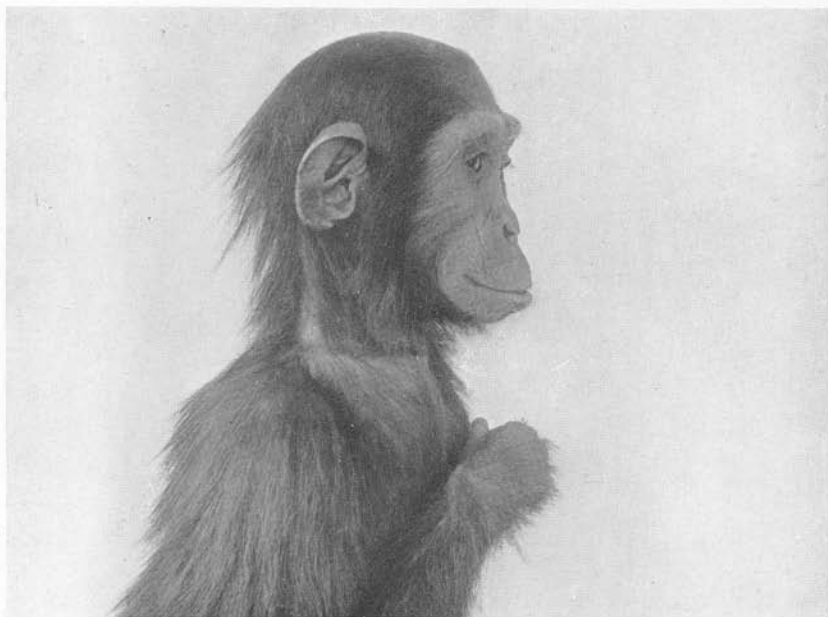
Pan schweinfurthii (Giglioli)

Female juvenile, Amer. Mus. No. 51387, Faradje, April 3, 1911. Total length of animal, 410 mm. Specimen in the flesh.

Figs. 1 and 2. Front and side views of head.



1



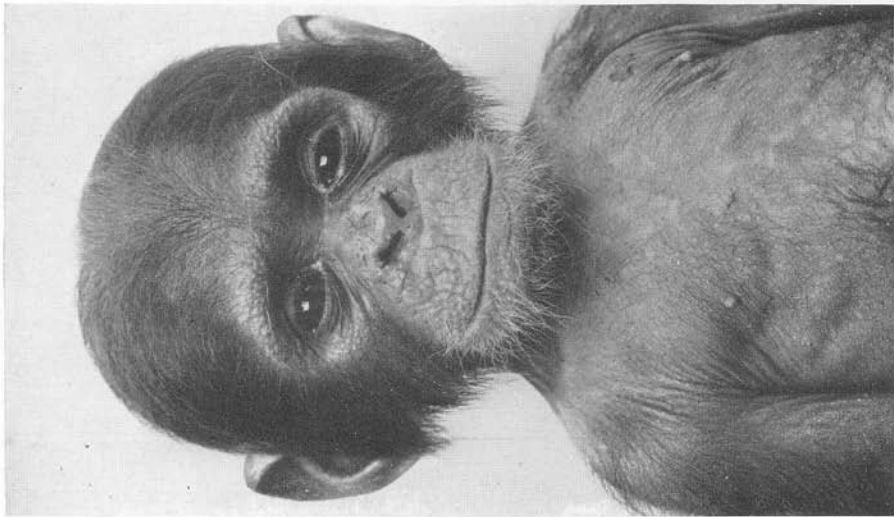
2

PLATE CLXIV

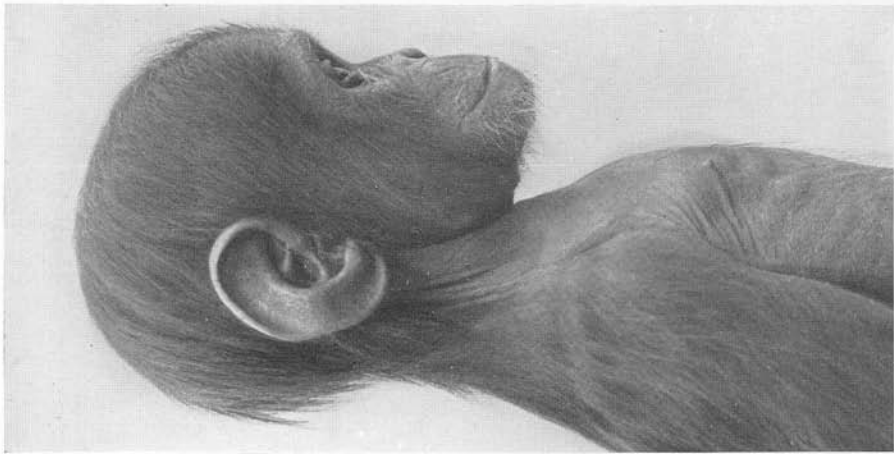
Pan schweinfurthii (Giglioli)

Male juvenile, Amer. Mus. No. 51379, Faradje, November 9, 1912. Specimen in the flesh.

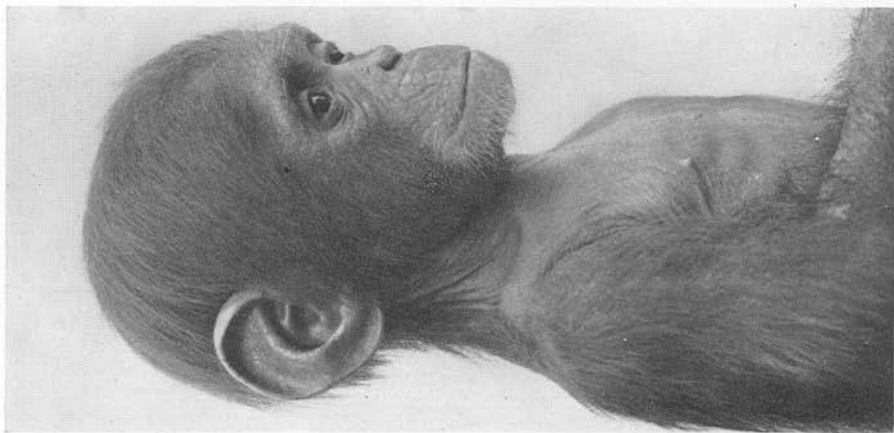
Figs. 1, 2, and 3. Front, side, and three-quarter views of head. Same animal shown on Pl. CLXV.



1



2



3

PLATE CLXV

Pan schweinfurthii (Giglioli)

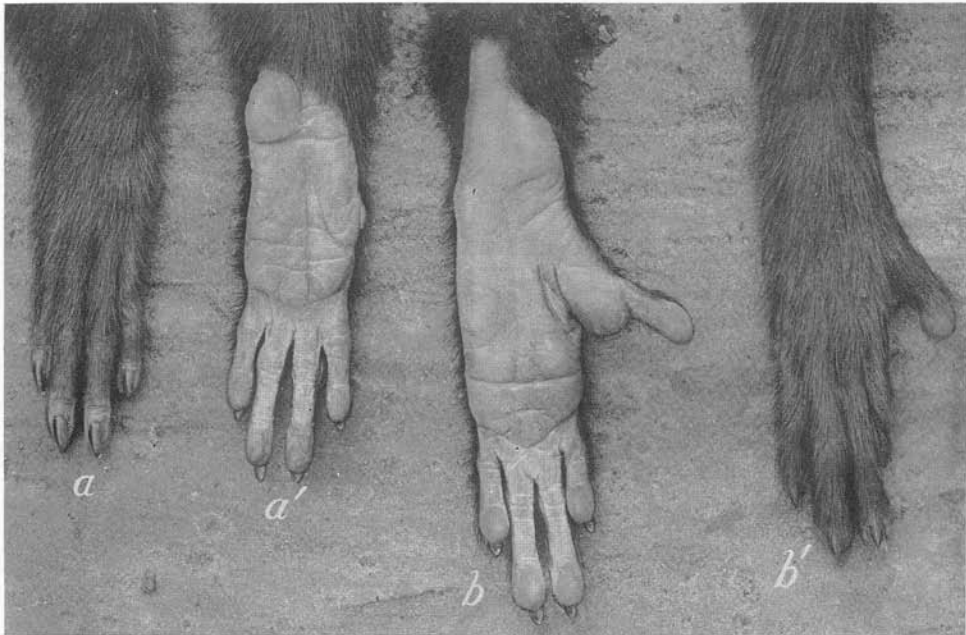
Male juvenile, Amer. Mus. No. 51379, Faradje, November 9, 1912. Showing general body proportions. Specimen in the flesh.



PLATE CLXVI

Fig. 1. Hands and feet of *Colobus angolensis cottoni* Lydekker. Female adult. *a*, dorsal surface of right hand; *a'*, palmar surface of left hand; *b*, plantar surface of left foot; *b'*, dorsal surface of right foot.

Fig. 2. Hand and foot of *Pan schweinfurthii* (Giglioli). Female adult, Amer. Mus. No. 51392, Faradje, April 3, 1911. Length of hindfoot, 220 mm. *c*, palmar surface of left hand; *d*, plantar surface of left foot. Specimens in the flesh.



1



2

PLATE CLXVII

Nest of *Pan schweinfurthii* (Giglioli). North of Niapu, November 19, 1913.
After selecting a site for a nest, these monkeys break and bend down the branches
and twigs in such a manner as to form a more or less horizontal resting place.