

Onap' group.

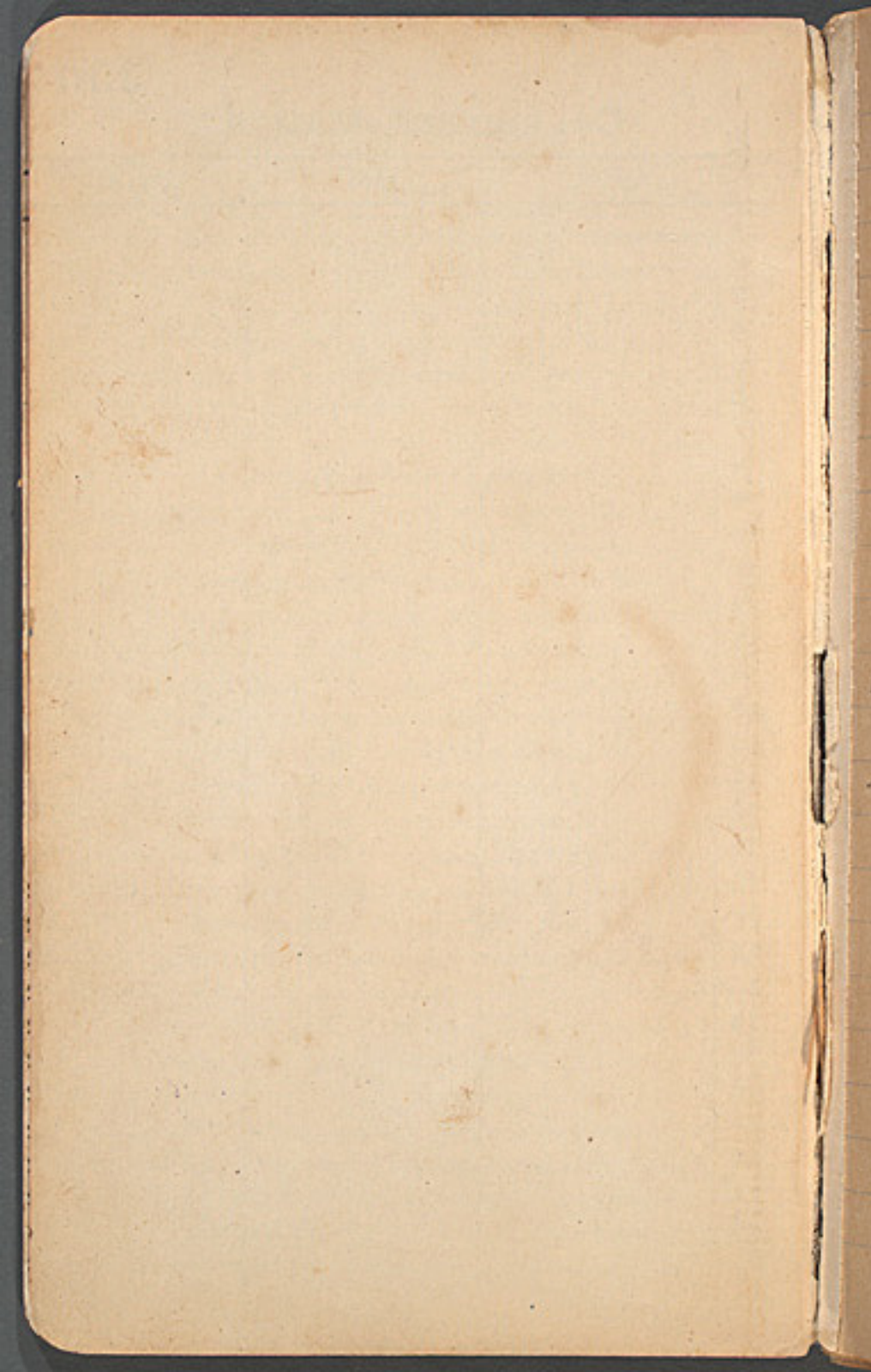


CALENDRIER MEMENTO

	JANVIER	FÉVRIER	MARS
1			
2			
3			
4			
5			
6			
7			
8			
9			
10			
11			
12			
13			
14			
15			
16			
17			
18			
19			
20			
21			
22			
23			
24			
25			
26			
27			
28			
29			
30			
31			

CALENDRIER MEMENTO

	AVRIL	MAI	JUIN
1			
2			
3			
4			
5			
6			
7			
8			
9			
10			
11			
12			
13			
14			
15			
16			
17			
18			
19			
20			
21			
22			
23			
24			
25			
26			
27			
28			
29			
30			
31			



Accessories for
Okapi group.

No 1. bush ~~upon~~
~~which the Okapi~~
~~feeds (2 bushes)~~
photograph
has been taken

none
informative
No. 01 in formalin
several small
branches showing
the arrangement
of leaves & berries
Twelve moulds of
the leaves of No 1
have been made
(one of the berries)
They all bear the mark
No 1. on the back.
Colour sketches of leaves
and berries have
been made by Mr Chapin.

No 243 A tree supporting
a liana it has
been cut in three
pieces.

All numbers start at
the base of the tree,
when it is cut in
sections. At each cut-
corresponding numbers
are affixed.

The smaller top-branches
are attached to the
upper section no 3.

The middle section (243)
of this tree is still
fastened into the best
section (no) of
the liana

A Photograph has been
taken of the top section
of the tree with the
leaves still attached

No⁰³ The large spray of
the top of the tree has
been put in formalin
to show the general
arrangement of the
leaves No 03.

Color sketches of leaves
have been made by
Mr Chapin.

12 moulds of leaves
have been taken
They all bear the marks
No 2-3

a large larva supported
by the above tree (2403)
is cut in 9 sections
bearing the numbers
from 4 to 11.

The lower portion of No 4
has to be partly put
into the ground.

No 12 ferns and
other vegetation that
has been taken from
the liana — in formalin

Small liana has been
cut in 4 sections

No 13 to 15.

The upper portion has
been bent over and
bound together. These
lianas are very flexible
when green.

Large liana in 10 sections

No 16 to 24

~~set~~ photographs have
been taken

No 16 is the base and
with its lower end partly
imbedded in the ground
accumulated at the base

150 cm above ground
of a large tree 65 cm
a large portion has been
left out. Nos 17 to 20
are the actual sections
Nos 21 and 22 have
to form the large bent
sections have been left
out between. No 23
& 24 are again the
correct sections.

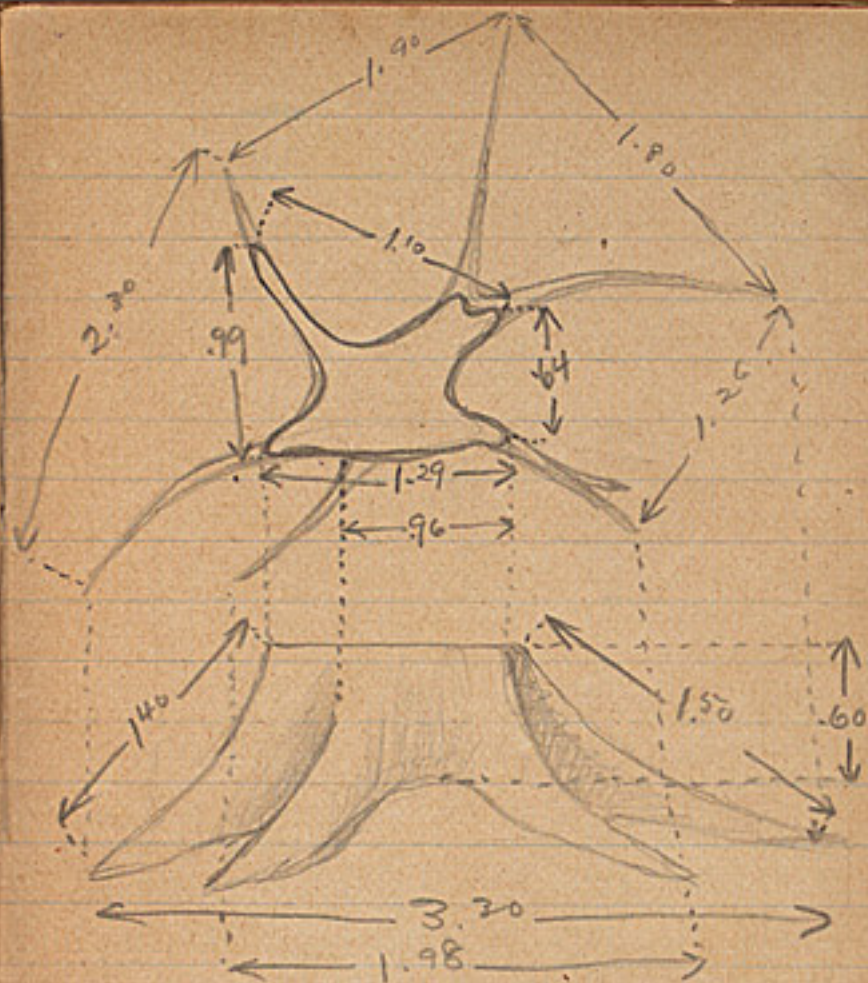
The liana hanging from
by the upper portion of
no 23.

In the large bent were
several ferns, alongside
the vertical sections some
other epiphytic plants.

creepers forming
a high bench
across both ends
partly imbedded
in the ground.
No 25 & 26.

No. 27. Bundle
of lianas, that were
creeping alongside
the big liana (No 16 & 24)
the smaller specimens
were attached to
the service.

No 28. a smaller
bundle belongs
to No 27.



allow for 40cm. cut out.

no 36, no. 55 no 34

No. 29 small
bundle of lianas
from the same
tree, all growing
alongside the heavy
liana (No 16 to 24)

No. 30. heavy liana
small bundle of
4 sections, from
the same tree.

No 31. - 32 a larger
bundle of heavy lianas
in 5 sections
from the same tree
all alongside the
heavy liana

No 33 bundle of
small lianas, consisting
of 4 smaller bundles

all alongside the
heavy flims

To the same bundle
are three pieces
of wood attached.
(the edges of the
flattened roots that
reach far out from
the base of the big
tree No 34, No 35
No 36. (see sketch on
prec. page)

No 37 to 48, a bundle
of many sections
of a tree, the numbers
start at the bottom
the branches near the
base are numbered
upwards.

21 molds have been
taken of the leaves

nos 37-50

^{small branches with}
Some of the leaves
have been put in formalin
as samples. No. 49
A photograph of
typical leaves has
been taken to
show the variations.

No 50. a small bundle
conty. smaller trees
of the same species
The Okapi feeds upon
the leaves of the
above tree (No 37 to 50)

No 51-52. A large
bundle of small trees

15. ~~bound~~ moulds ^{st-52} have
been made near
the base of every
leaf is a swelling
that has been cut

off before cutting the leaves.

A number of typical sprays of leaves have been preserved in formalin No 53.

A photograph showing the ^{typical technique} ~~shape~~ feeding

also on the above species of tree said to be especially fond of the young leaves.

Colours sketches by Mr. Chapin

No. 54 - 55. A bundle of large leaved small tree

15 moulds have been made, Nos 54 - 55

a photograph of typical specimens.

Typical sprays of leaves have been put in

formalin No 56

The Chapin feeds upon the leaves of the above

No 57 & 58 small
bundle of small
trees like the one
of no 2 to 3 moulds have
been made from the larger
tree that supports the
heavy liana (no 2 & 3)

a large bundle of
creepers no 59 - 60

12 moulds have been
taken nos 59 - 60:
a photograph of creper and leaves
sprays have been put
in formalin no 61
color sketches have
been prepared No 59-61

no 62 - 63. small
low bush (small
bundle, (acacia-
like)

36 moulds have
been taken from
2 leaves, one large, one small
typical sprays have
been put in formalin.

No. 64

a photograph and color-
sketches have been prepared

No 65 & 66. small
bundle of a little
"tiny trees"

1 photograph.

20 moulds have
been taken

typical sprays have
been put in
formalin. No. 67.

Color sketches by Nor
Chapin.

no 68 - 69 a small
bundle of creeping
ferns

a large number of
leaves have been
put in formalin
no 69
no casts have been
taken

a photograph showing
several typical
specimens.

color sketches of leaves
by Mr Chapin

an epiphytic plant
growing upon
vertically as well
as horizontally inclining
trunks or branches

a number of leaves
(single) have been
preserved in formalin
no 70.

11 moulds have
been made no 70.

a photograph.
of a tree showing plant
has been taken. ^{no 70}
A number of root-hairs
with its accumulations
of moss and rootlets ^{no 70}
have been dried and packed ^{no 70}

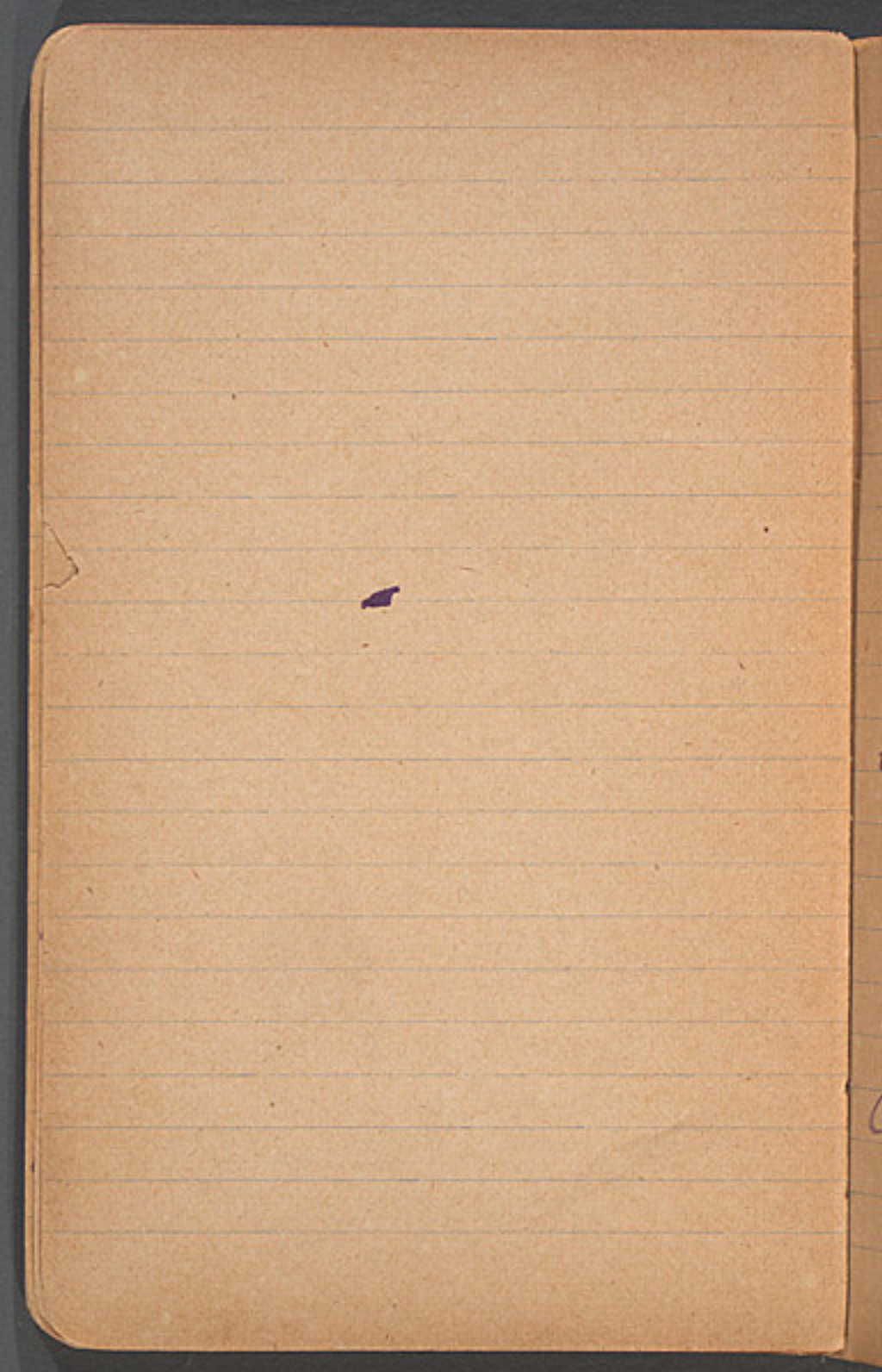
Color sketches of
the leaves have
been taken by
Mr. Chapin.

9 Small plant & filices
growing between the
lower bushes

8 moulds have been
taken No 71

Several plants have
been preserved
in formaline No 71.

Color sketches of
leaves have been
taken by Mrs Chapin



a plant with large
leaves (arum-like)

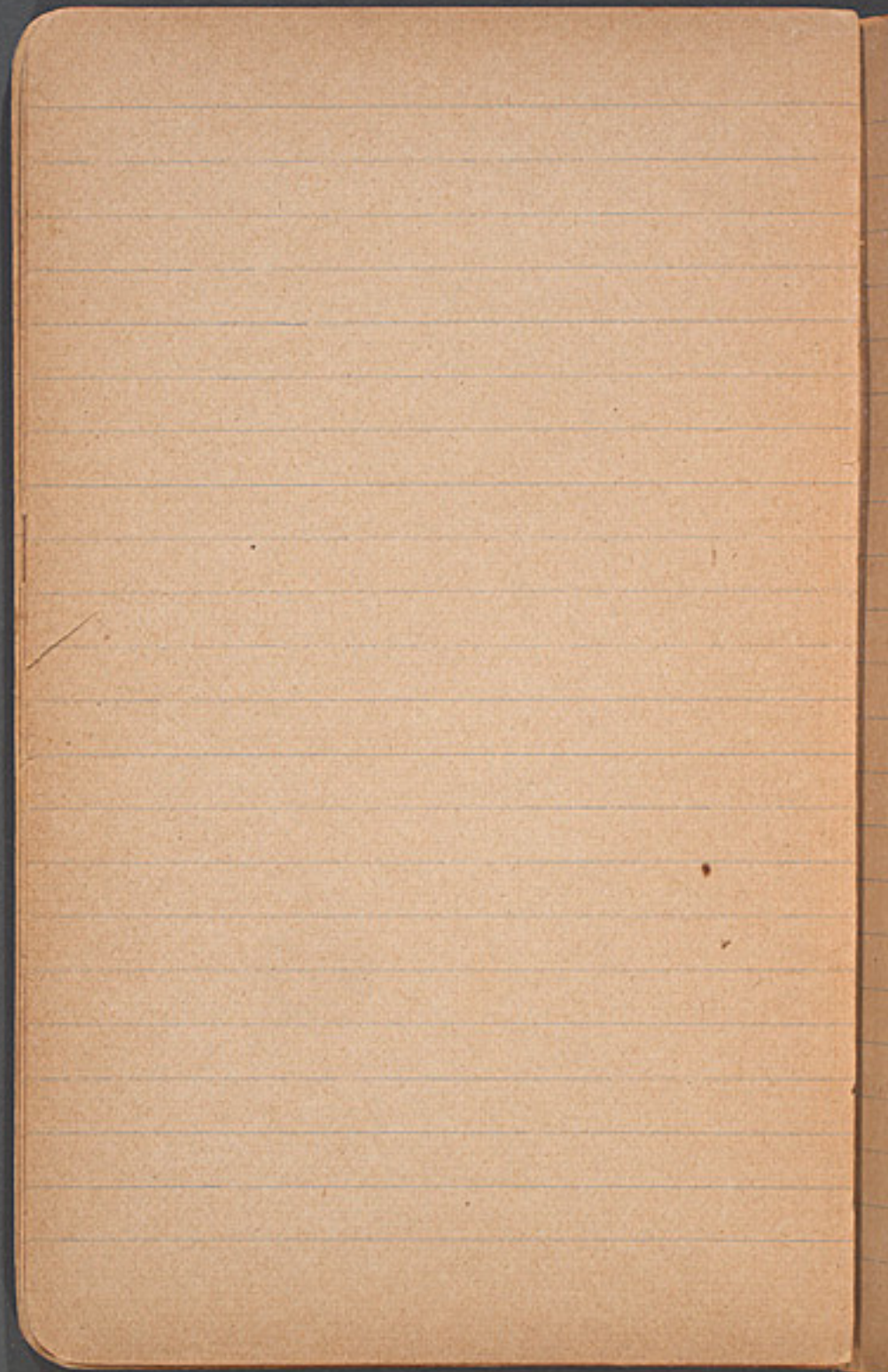
Several plants have
been preserved in
formalin


no 072

8 moulds have
been made nos. 72.

a photograph of several
plants has been
taken no 72.

Color sketches of leaves
have been prepared
by Mr Chapin

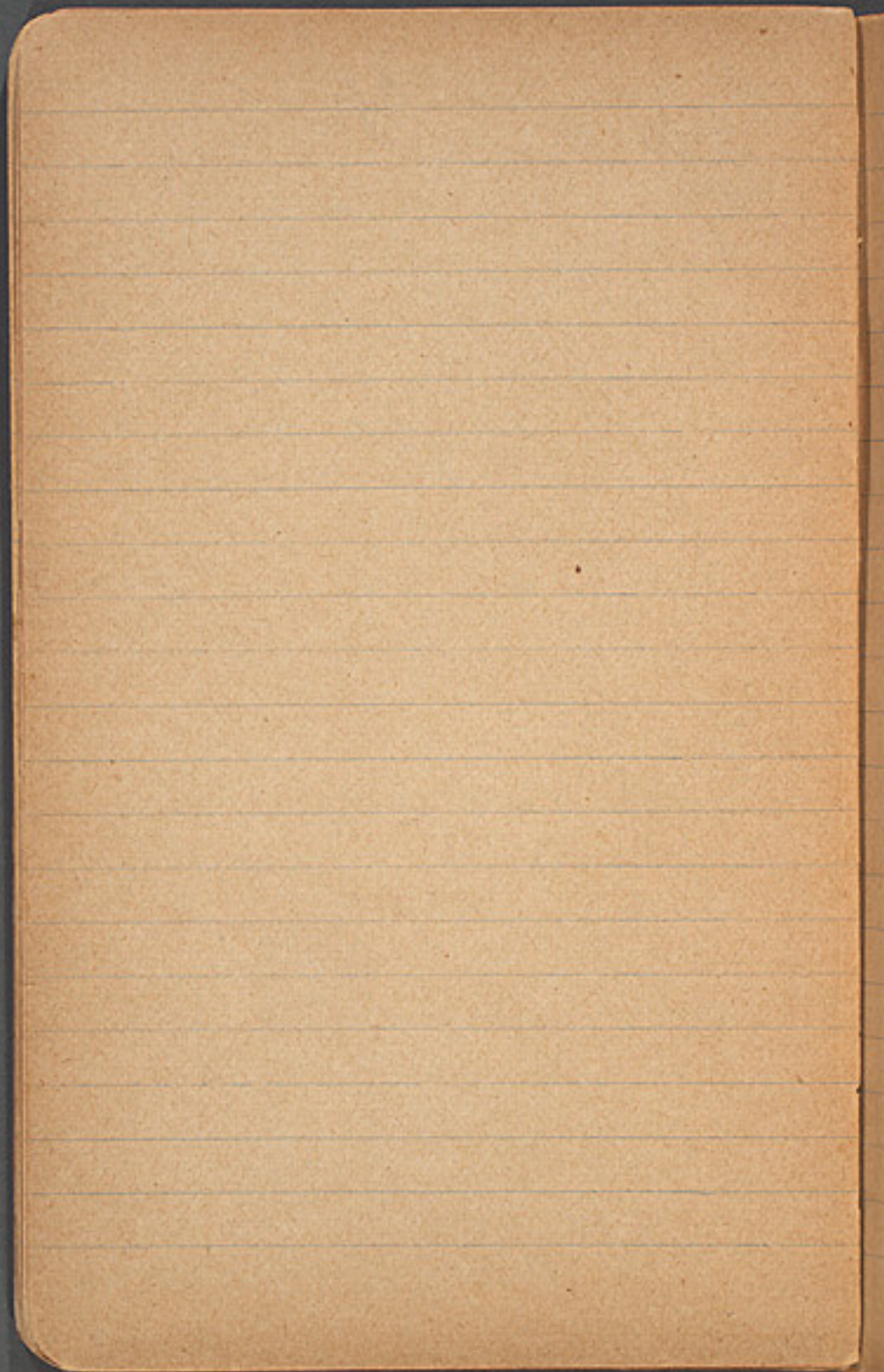


A lily like plant
 some plants
have been preserved
in formalin
No 073

color sketches have
been prepared
by Mr Chapin

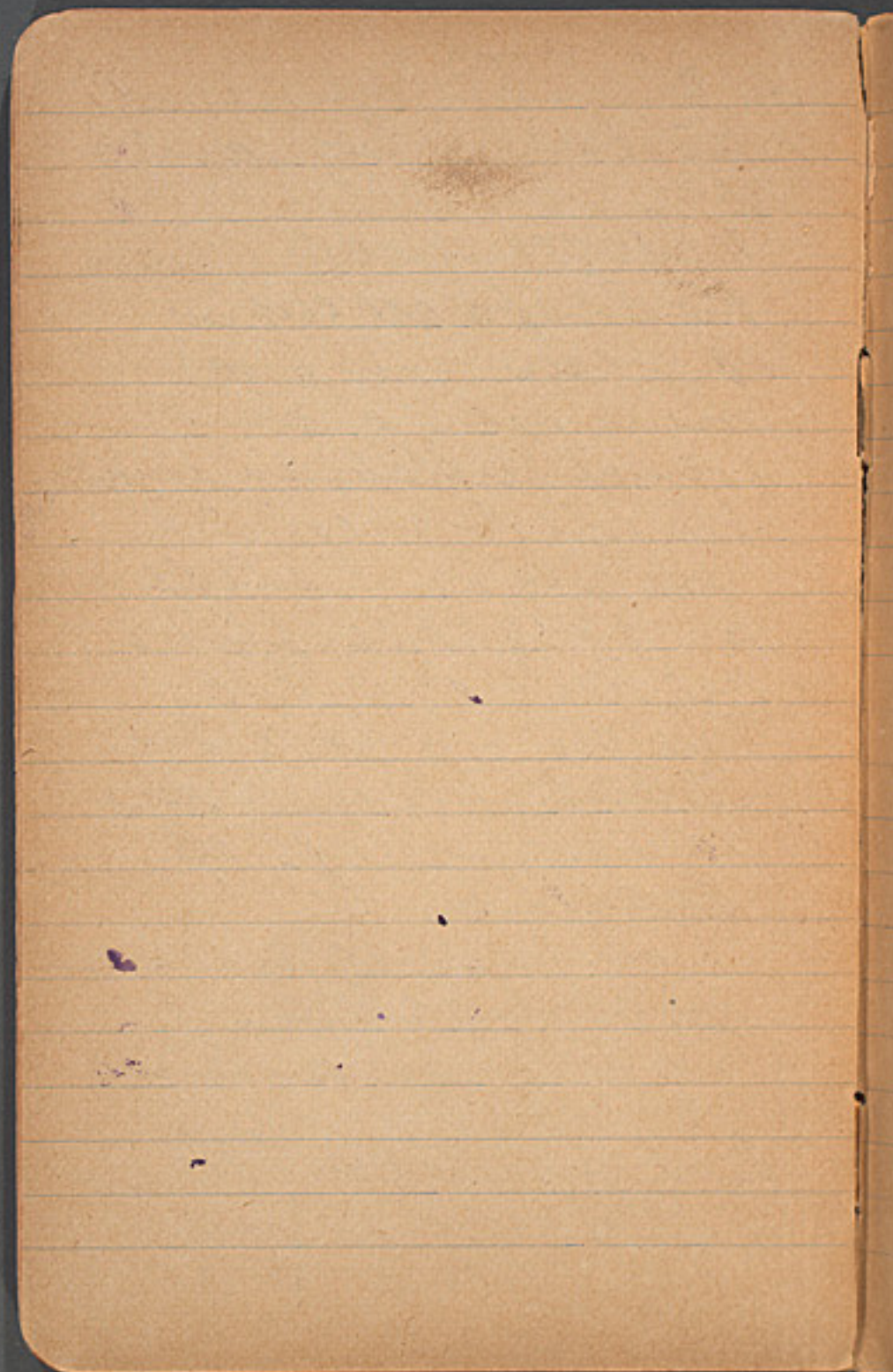
A photograph showing
several typical
plants

6 moulds have
been made



A bundle of ferns
growing all on
the ground
a photograph has
been taken
showing the ferns
transplanted on
open ground.
in formalin No 74.

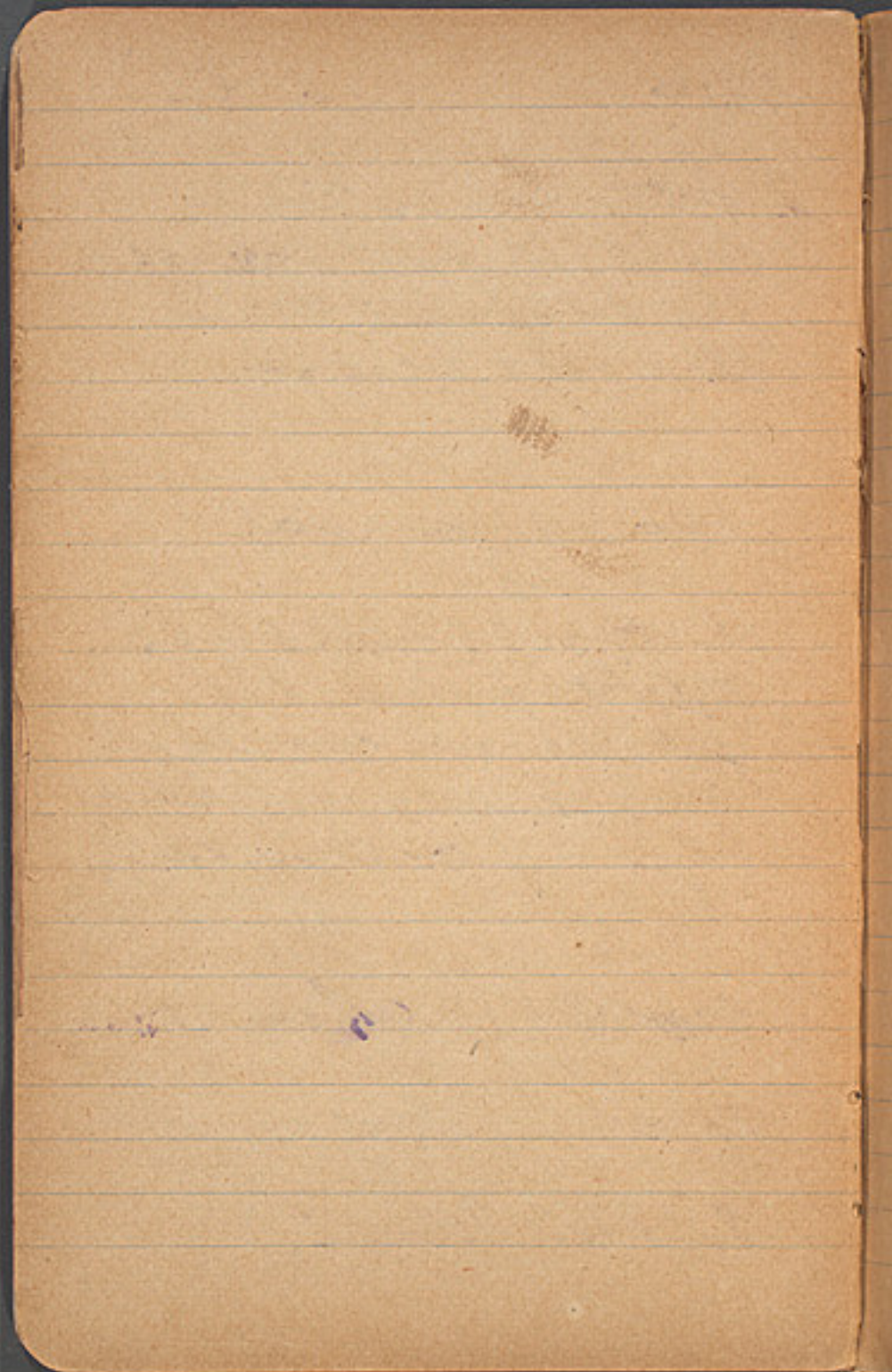
A small bundle
containing
several mites -
rooms, preserved
in formalin
No 75.
color sketches have
been prepared.
no 75



2 ^{such} Palms as shown
in the photographs

1 larger specimen
the leaflets are cut to
40 pieces, in such
manner that the
lowest leaflet, is underneath
the upper ones in the
package. The left
and right leaflets
are kept separate.
The stems have the
same numbers
as the package of
leaflets.

1 smaller specimen
arranged in the
same manner
Two packages No 76.
in formalin.



No. 77. No. 78.

2 tin cans cont.

sand from one of the
knobs in the
Okapi-forest.

No. 79 and 80

2 tin cans cont.

soil from the
place where the
accessories have
been collected

No. 81. 1 tin can

cont. excrements

of the Okapi.

82. light & dark brown
fungi growing
on the bark of dead
trees on branches
samples in formalin
see photograph.

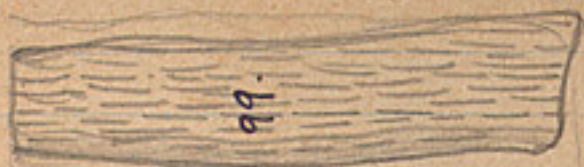
83. small vine running
about on the ground
among the dead
leaves see photographs

84. small ground plant
with ~~conspicuous~~ usually
reddish underside
of leaves
see photographs

85. a bunch of branches
from which the thrips had
actually fed

86. some orchids dropped
from the trees on
the ground

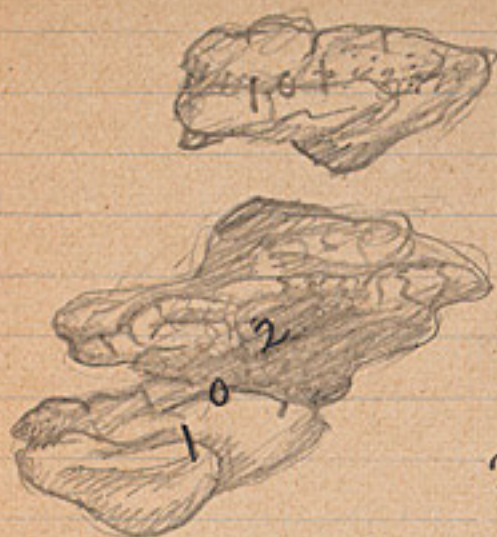
Hornbill nest.



TOP.

100 pieces of bark

Hornbill nest.



Fungi.

103 an old piece of wood

104 Dirt which closed entrance

105 Fruits (not in nest)

106 Material from nest

8

blank
pages

7

Blank
Pages



Group for *Khuvio*
Tree No 107 - 126
with a reddish fruit

Twenty moulds
all marked

No. 107.

Ten moulds
of leaves from fresh
shoots No. 108

same species of
tree No 127 - 135.

No. 110. Twigs in formalin

1 plasterbox
of seeds
marked no 109
marked on bottom

J. Covey
No. 110. 2 tins of same fruit.

same species of
tree No. 136 to.

No. 136. small piece
to the left broken close
to the ground.

No. 137 about 5 inches
to the right
a stump only a little
emerging from the
ground.

No. 138. a higher
stump a few
inches backward

No. 139 a small piece
by anchoring off, 6 inches
to the right only a few shooks

No. 140. the heaviest
stump four inches

to the right
with many forest
green shoots with
red tips.

No. 141 a small piece
5 inches to the right
and a few inches
forward.

Large leaved tree
No. 142 to 144.

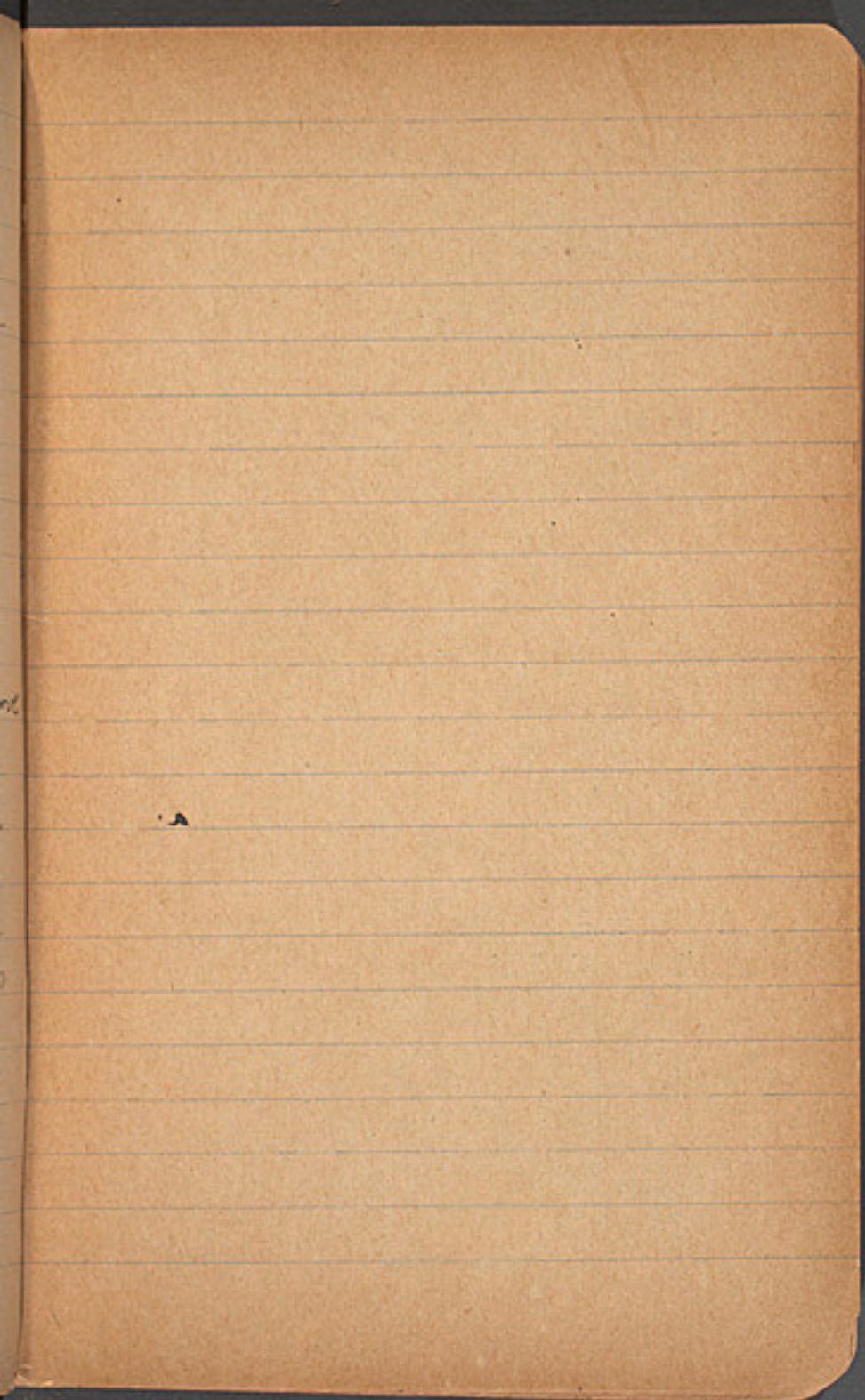
a twig tree of
above species

No 145

No. 143. Dried leaves of above
species of tree.

No. 144 - Twigs in formalin

12 moulds of this
tree No. 142



1 Acacia

No 146.

one branch broken
off & dry -
without leaves

No. 146. Extra thorns
for acacia. (in a tin box)

No. 146. Small branches,
in formalin

1891

small tree
with whitish flowers
and felt like leaves

slanting position
2 pieces on dry

No 147
no flowers only
small leaves
(Nos. 184-190 are other trees
of this species)

18 moulds of leaves

No. 147.

Same species

small tree
with many whitish
and brownish
flowers.

No. 148

No. 148 - Sprays of leaves
& flowers, in formalin.

a small bush
of same species
with large leaves

five shoots.

No. 149.

small bush of
same species

a tall spray
with small leaves

three small sprays
with large leaves

No 150.

Thorny bush
with round berries

two stems from one
base about 2 or 3
inches apart

No 151

and No. 152

10 moulds of leaves
No. 151

1 mould of fruit / berries
No 151

No. 152. Extra thorns
for above bush (in tin box)

No. 152. Small branches,
in formalin.

Small tree with small
scureted leaves

1 tall stem No 153

1 shoot No 154
four inches to the
left.

1 shoot No 155
6 inches to the right
all from one base

19 moulds of leaves
No 153

No. 154 - sprays of leaves, in
formation.

a low bush with
large fresh leaves
emerging from one
base of same
specimen.

No 156. - ~~723~~

a large tree
with bean like fruit

No 157 - 173.

No. 158 - all the beans
from above tree. (Packed dry, in
box.)

No. 159. Leafy twigs, in
formalin, from fresh young
shoots as well as an old tree

19 moulds of leaves
incl one of tips of
fresh young shoots.

No 157

same tree of same
species
but smaller

No. 174 - 176

Three small
sprouts (all separate)
No. 177

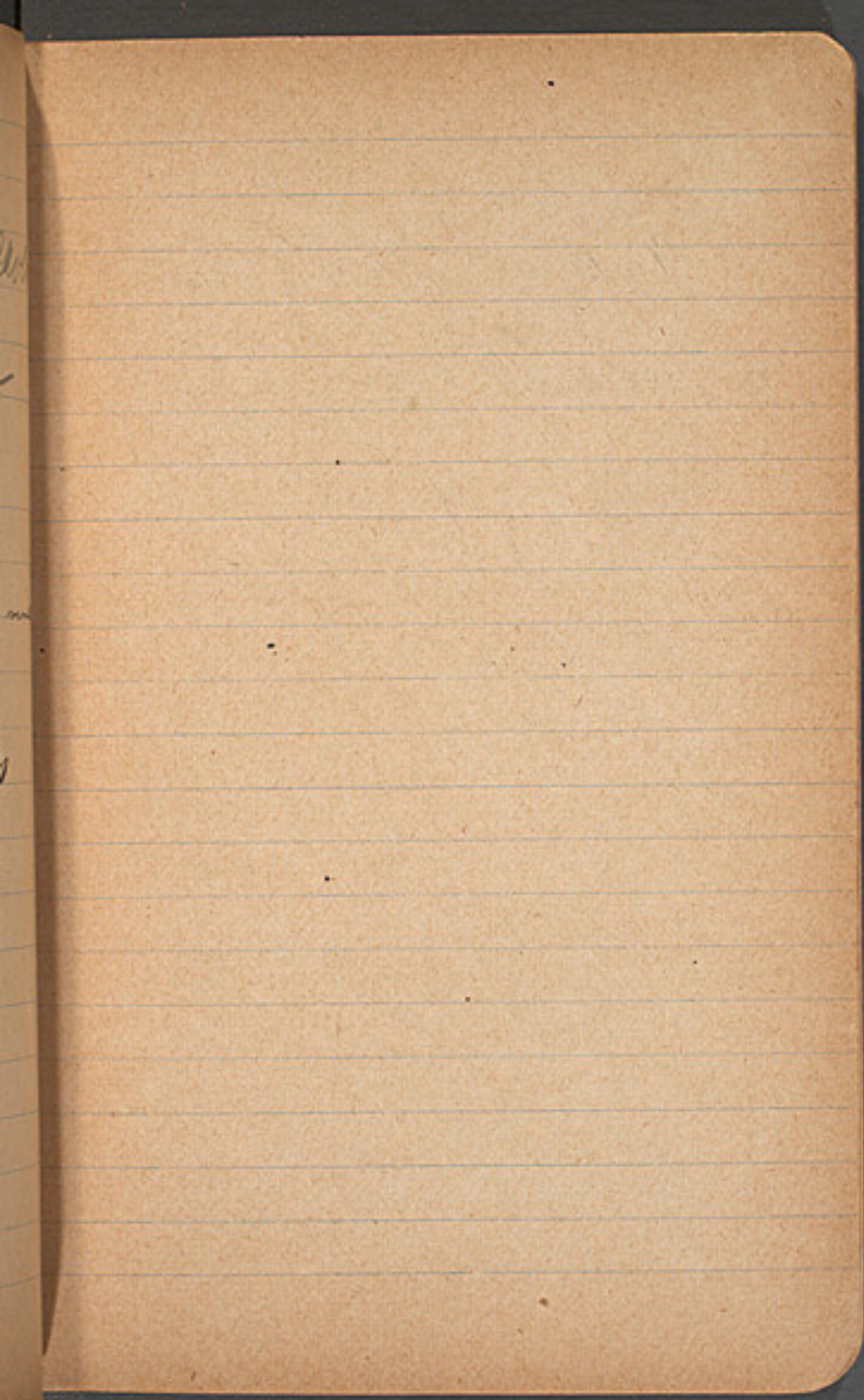
1 wooden box
[Berndt Alp milk]
contains old dry leaves
No. 157 -

8 moulds of leaves
of small vine

No. 178.

No. 178. Several of these vines
in formalin.

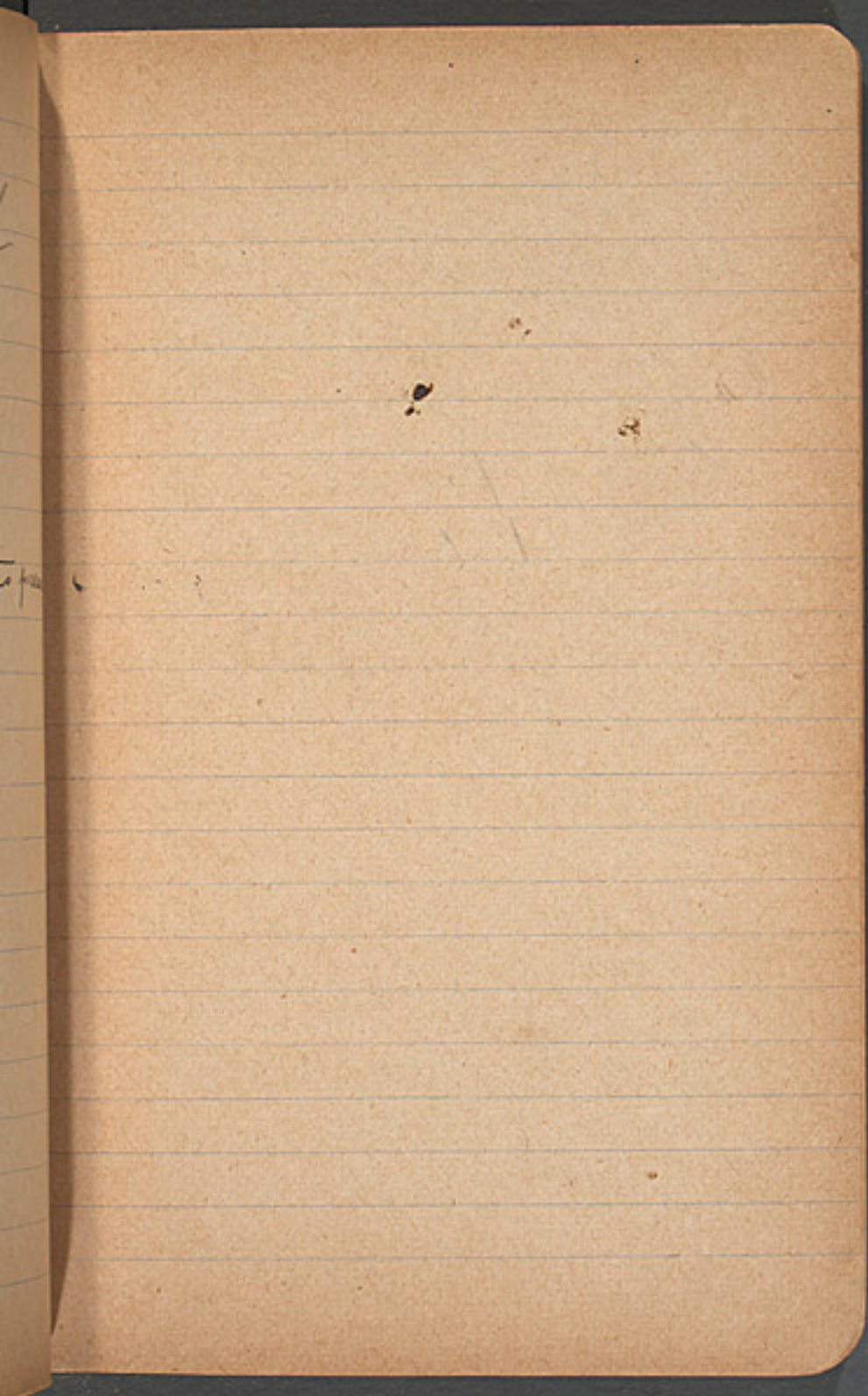
see photographs



21 moulds of
an orchid

no 179

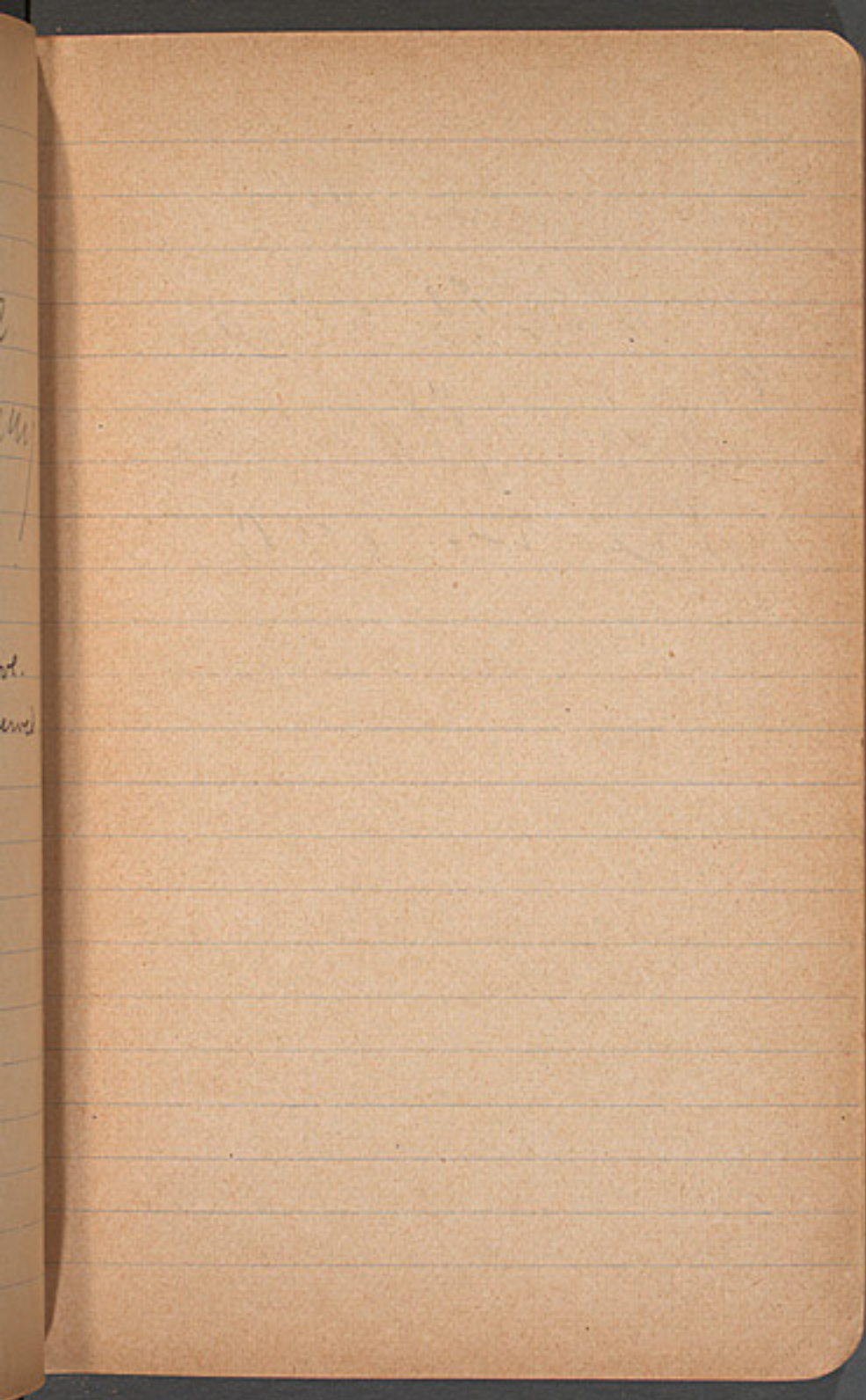
no. 179. Four plants preserved
in formalin



12 moulds
of a ball blue
(purple) flowering
plants 180!

No 180. Dry leaves of above.

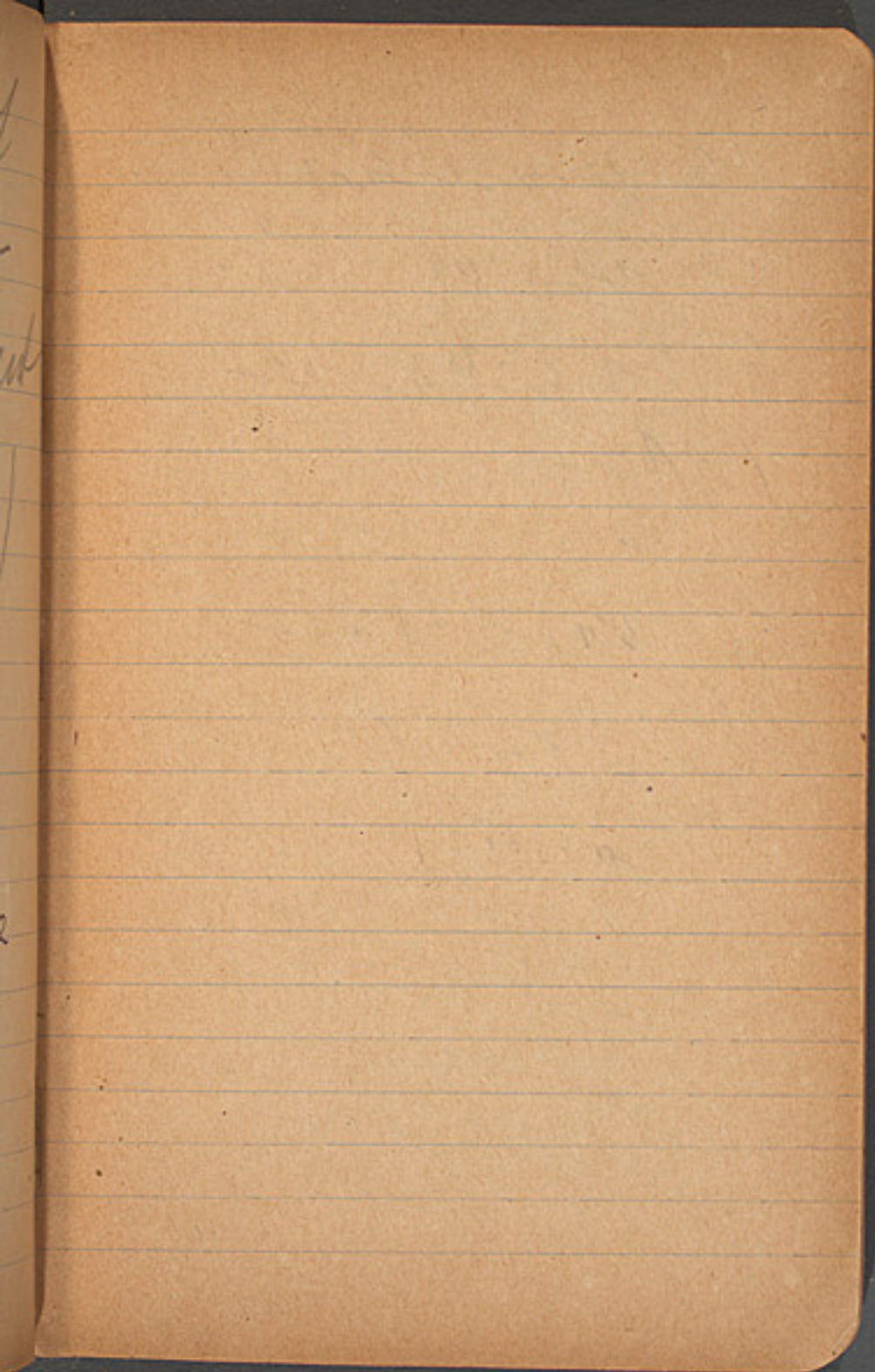
No. 180. Two plants preserved
in formalin



5 moulds of
leaves of a
lily-like plant
(Makimzula)
2 moulds of
the fruit.

No. 181

No. 181. Two stalks & 2
fruits, in formalin



Small hermit
hill.

a mould

No. 182

See photograph

No. 183. Two old snail
shells - lying on ground.

Small tree, with felt-like leaves
(same species as no. 147.)

No. 184-7.

Small tree, with felt-like leaves
(Same species as nos 147 or 184)

No. 188-190.

Nos. 191 & 2, two tall green plants, bearing cone-like fruit (preserved in formalin)

No. 193. a bunch of fine slender grass, from swamp.

No. 194. Grass growing in flattened bunches on open trampled spots.

No 195. 3 plaster-tins filled with dark gray earth, the common color beneath the grass.

No. 196. A plaster tin filled with lighter gray earth, and

two tiers of gray sand.
The ground along paths
and on bare grassless
spots is usually of this
lighter color.

No 197 a box
with broken
off branches,
leaves, bark etc

Garampa July 1912
Group of Great Eland

a large tree with
corolla like bark
long elongate
leaves (Angehe na Bara)

lower section of the
biggest tree No 200.

The different portions
to Nos. ~~207~~ 206.
Each one of
the different branches
forms a bundle

200. 15 leaf moulds from
above mentioned tree.

200. 3 tins of fruit of above tree.

200. ~~3~~ 3 sprays of leaves and fruit.
in formalin.

No. 207 to 208

a smaller tree of the
same species

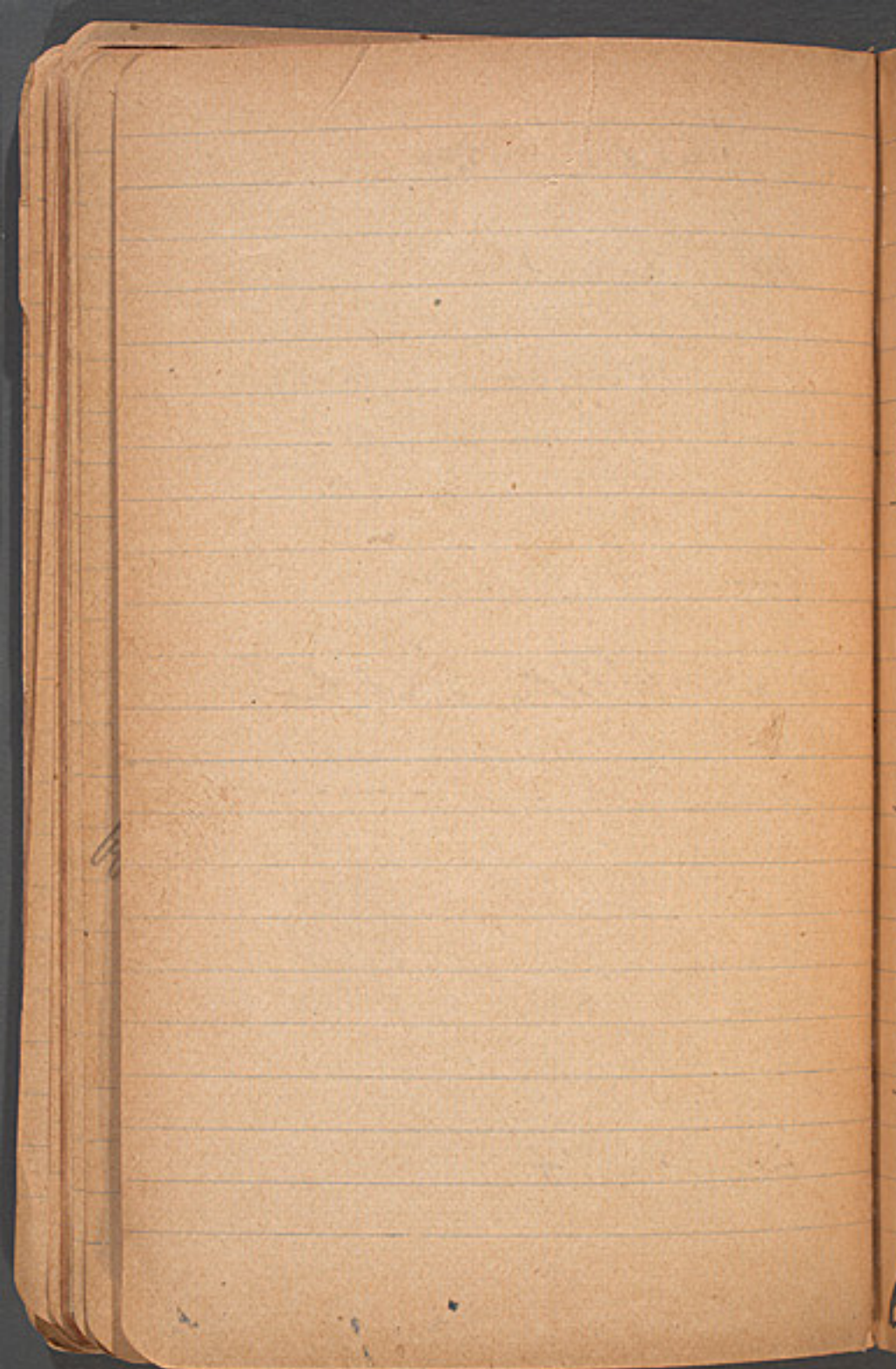
No. 209

a small tree of the
same species.

No. 210

a number of shoots
of the same species
very numerous
among the grass.

several of them growing
together



Tulip tree

No. 211.

The largest specimen

No. 211. 17 leaf moulds.

No. 211. A box containing old dried flowers and stalks.

No. 212

a smaller tree

No. 212, some small leafy branches in formalin.

No. 213

a shoot of same species

No. 214

a shoot of same species
leaves eaten occasionally by glands

most after end
of May. Only
the tips are eaten

tree with brilliant
broad leaves & ~~a~~
round fruits.

1 small tree with

a number of fruits

No. 215a tin box

No. 215 containing

nearly all the dried fruits on this

No. 215. 16 moulds of leaves. tree.

5 2-piece ~~the~~ moulds of fruit.

No. 215. Sprays in formalin.

a number of shoots

of same species No. 216.

a low tree of same species
No. 217.

eaten by Elands
(favourite food)



a tree bearing bunches
of long shining wavy
leaves.

a small tree No. 218

a very small tree of
same species

No. 219.

No. 218. A box of dried leaves

No. 218. Several sprays of leaves
in formalin.

a tree with small single
leaves and fine slender
twigs (a maple like fruit)

No. 220.

No. 220. 10 leaf moulds.

No. 220. Sprays in formalin.

a small tree of same
species 221.

a very small tree
of same species
No 222

eaten by 4 lards
9 giraffes

a small tree with
small composite
leaves. No. 223.

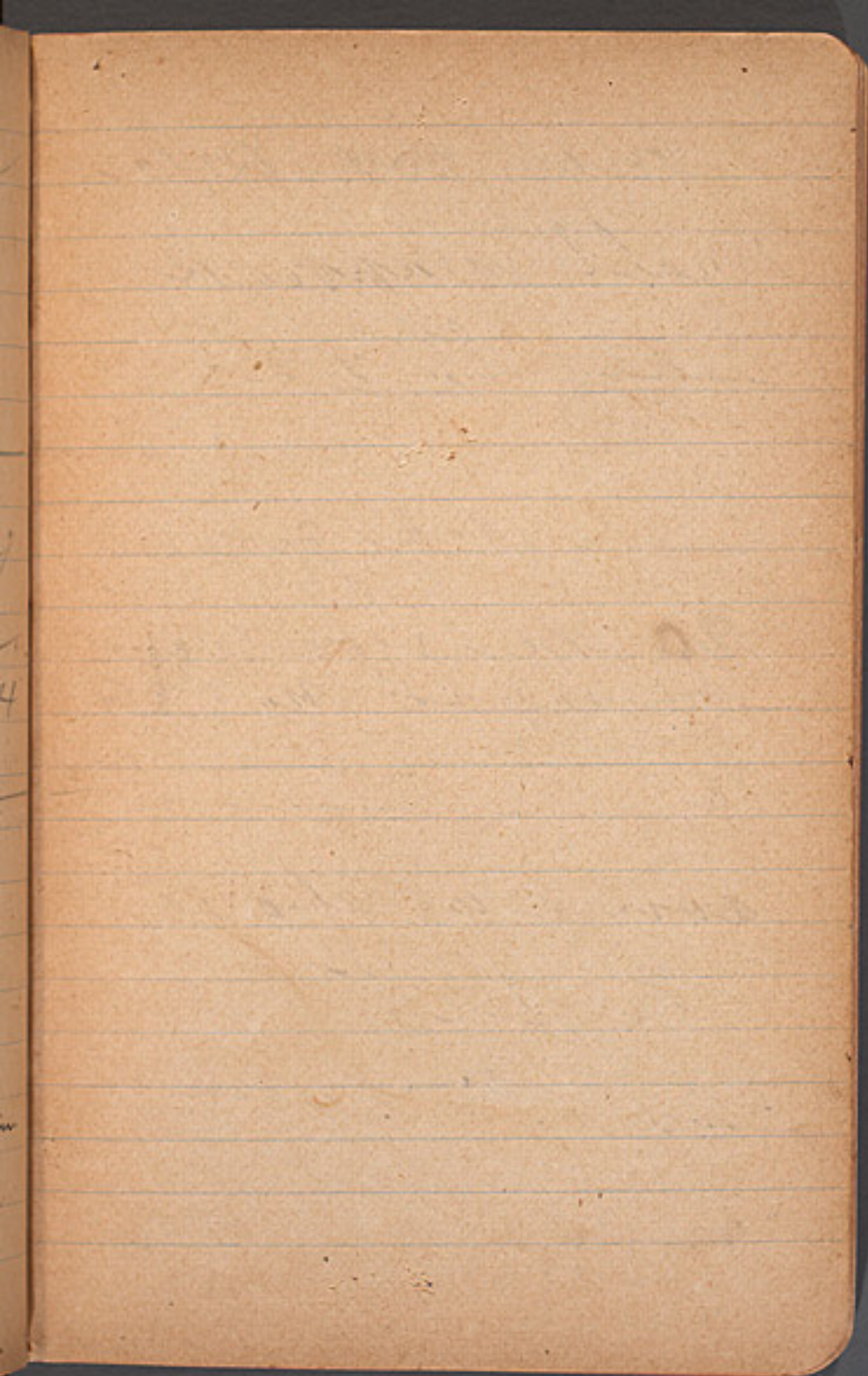
a shoot as growing
generally between
the gaps No. 224

same as above

No. 225

No. 223. 21 leaf moulds.
No. 223. string leaves in formalin.

favorite food of
blends of *Julia*



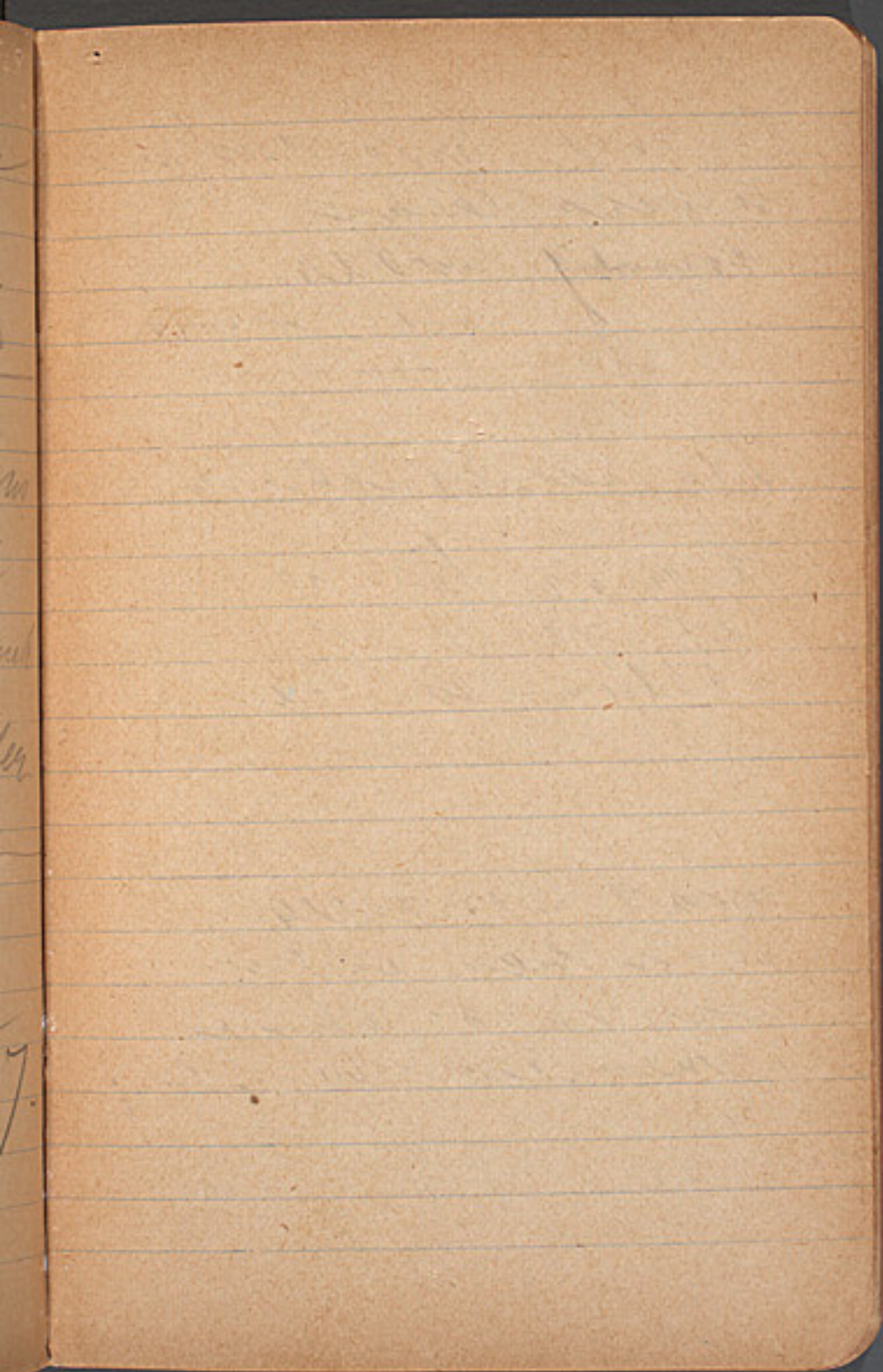
a tree with rather
glossy leaves,
forming woods.
No 226.

The larger specimens
grow up to about
20 yards, the trunk
seldom exceed
 $\frac{1}{2}$ foot in diameter.

several smaller
trees forming a
brush of same
species No. 227.

No. 226. 15 leaf moulds.

No. 226. Several sprays, and
a packet of detached leaves, in
formalin.



a tree with feltlike
leaves (same as
no. 147 of *Alcesurus*
for *Phinoceros* group)

No. 228.

No. 228. 3 moulds of large leaves.

No. 228. Several leafy branches in
formalin.

A number of
shoots No. 229.

growing usually
singly or several
together between
the grass often
at the base of other
trees.

the
20
19

late
in

in

the

a bush with compound
leaves, growing about
12 feet high. No 230

another bush of the
same species 231

another bush of the
same species 232
No. 230. 24 leaf-moulds.

one of the ^{most} favorite
foods of the grass
& land, during the months
end of May, June & July
A number of empty
shells form a bush.
No. 230. sprays in formaline.

7/11

4

30

31

1

2

1

1

7/11

1

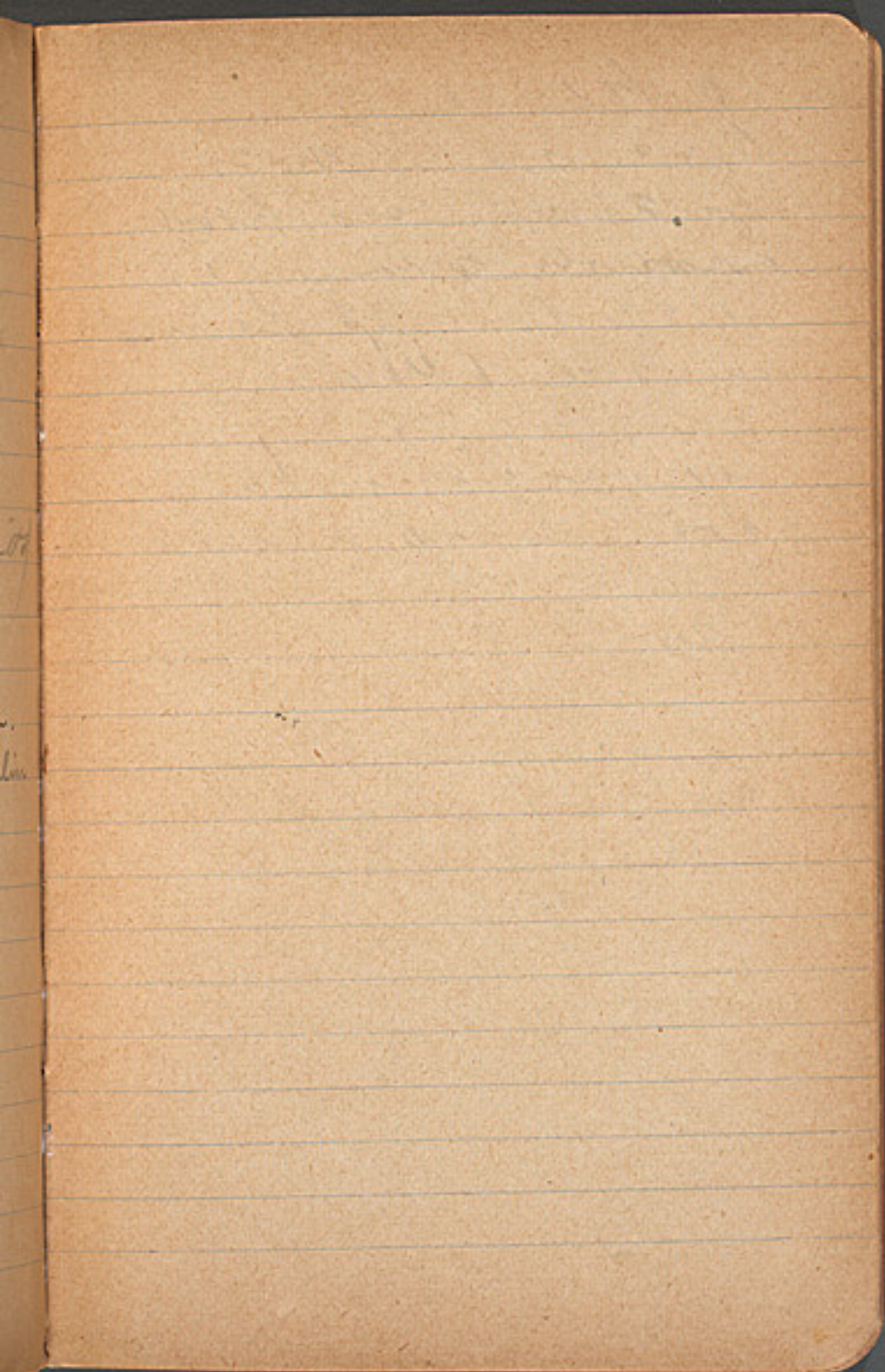
1

a ball with been
like fruit now
with whitish flowers
strongly wrinkled
at edges of dull
brown buds

(same as No 157
of accessories.
for group of Rhinoc)

No. 233.

No. 233. 5 prays in formalin.
also flowers and buds in formalin
in a jar.

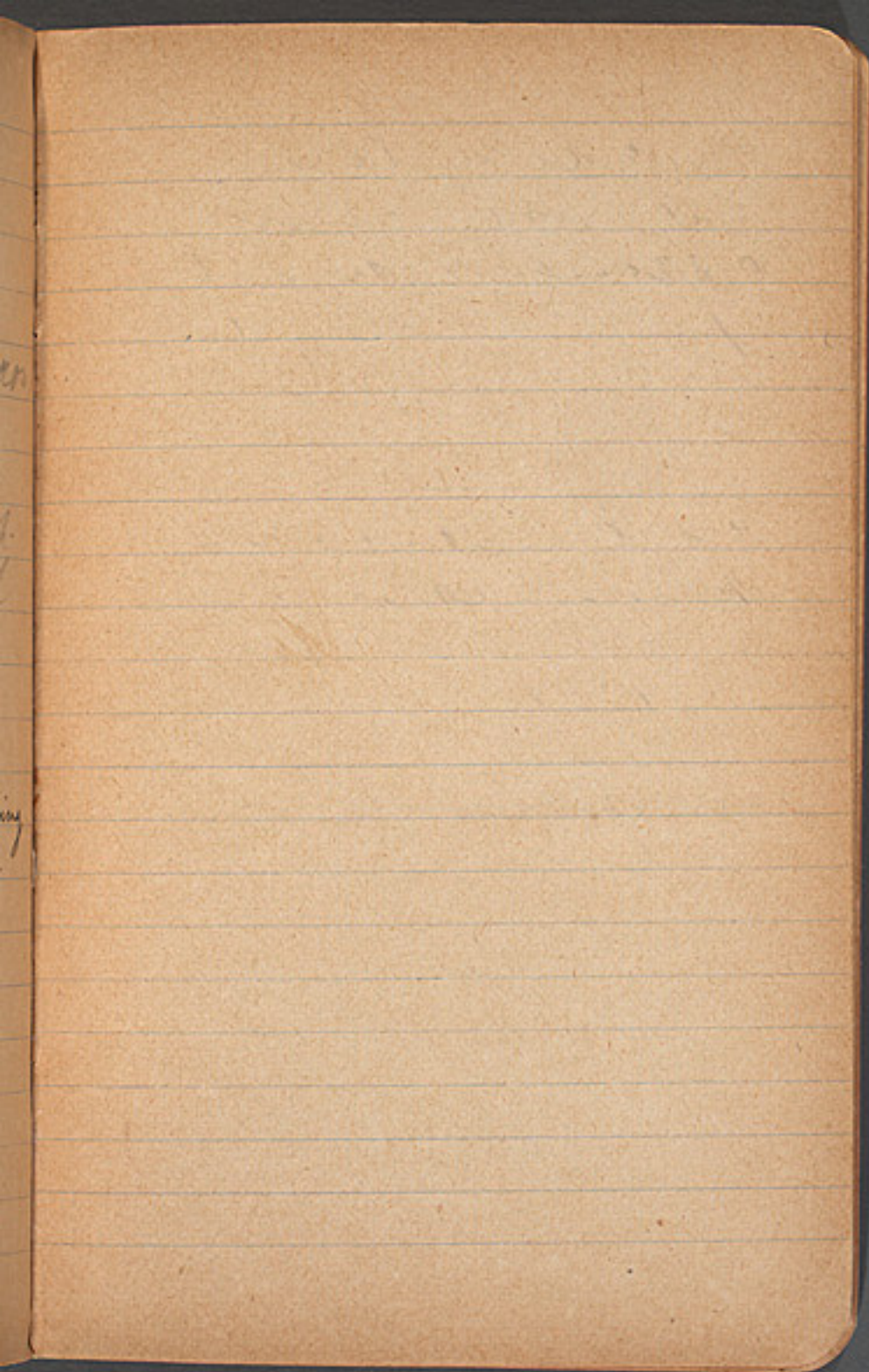


a tree with a
reddish fruit
(same as No 107
for group of *Pinus*)

This specimen had
no fruits, though
often nearby had
many

No 234

No. 234. Small branches, bearing
leaves & fruit, in formalin.



a tree with
serrated leaves
and pale yellowish
reddish fruits
7 yellowish flowers
No. 235.

(same species as
No 153 of the group
of Rhinoceros).

no. 235. Sprays in formalin.

No. 236. 17 leaf-moulds of
a tall green lily-like plant
("Matungula")

Same species as no 181 Rhinogroup.

No. 236. Several plants in formalin

No. 237. 8 leaf-moulds of
a small green plant,
with spade- or heart-shaped
leaves.

No. 237. Plants of various sizes in
formalin.

No. 238. A small green plant, with broad, rounded leaves, arranged radially, and pressed flat against the ground; often with an upright yellow flower in center. (Mar. to June)

16 moulds of leaves.

4 2-piece moulds of flower buds.

3 moulds of flower.

No. 238. Leaves & flowers in formalin, in a jar.

No. 239. A tall green
plant (Same species as no 180
- Rhine Group) - not flowering
now. 12 leaf-moulds.
no. 239. Several plants in formalin.

~~No 240. A box of dried
leaves of~~

No. 240. A bunch of old
dry beans, picked up on the
ground in woods. When dry
they curl up, but in damp
spots often lie flat on the
ground. They are the fruit
of the tallest species of tree

No. 241. 2 plaster-tins of dirt
(brown) for claud group.

no. 242. 1 plaster-tin of sand.

No. 243. 8 bunches of grass,
the most common species
in formalin

No. 244. 3 bunches of a
shorter finer grass in formalin

No. 245. 10 small ferns, in formalin

19

blank

pages

June 12/1910
Python 358 TL.
LT from anus 35 cm

Leopard ♀
TL 185.0 LT 765 E.H. 2250





110 148 159 180
 144 152 178 181 (2)
 146 154 179
 CALENDRIER MEMENTO

	JUILLET	AOUT	SEPTEMBRE
1			
2			
3			
4			
5			
6			
7			
8			
9			
10			
11			
12			
13			
14			
15			
16			
17			
18			
19			
20			
21			
22			
23			
24			
25			
26			
27			
28			
29			
30			
31			

CALENDRIER MEMENTO

	OCTOBRE	NOVEMBRE	DÉCEMBRE
1			
2	17	6. moulds.	
3			
4			
5	11		
6			
7			
8		5	
9	15	7	
10	17		
11	16		
12	10		
13	21		
14	15		
15	3		
16	24		
17	17		
18	8		
19	16		
20	12		
21	14		
22	11		
23			
24			
25			
26			
27			
28			
29			
30			
31			

