

AMERICAN MUSEUM *Novitates*

PUBLISHED BY THE AMERICAN MUSEUM OF NATURAL HISTORY
CENTRAL PARK WEST AT 79TH STREET, NEW YORK, NY 10024
Number 3295, 25 pp., 61 figures, 3 tables April 25, 2000

A Cladistic Analysis of the Therini: A New Synonym of the Cidariini (Lepidoptera: Geometridae, Larentiinae)

SEI-WOONG CHOI¹

ABSTRACT

To test the monophyly of the tribe Therini and resolve the relationship between Therini and Cidariini, 49 morphological characters of 38 species of *Thera* and related genera were analyzed cladistically. Five taxa from the Cidariini were chosen for outgroup comparisons. Monophyly of the Therini was not supported and the Therini newly synonymized with Cidariini. Five genera, *Praethera* Viidalepp, *Thera* Stephens, *Pennithera* Viidalepp, *Heterothera* Inoue, and *Diathera* Choi, are redefined monophyletically, and two new monotypic genera are proposed: *Costicoma*, n. gen. and *Fascilunaria*, n. gen. The combination *Thera firmata* (Hübner) is proposed. Relationships among the ingroup taxa are largely resolved: (*Fascilunaria* (*Heterothera* (*Thera* (*Diathera*, *Pennithera*))))). Synapomorphies and a diagnosis of each genus are given, and a key to the ingroup genera is provided.

INTRODUCTION

The geometrid subfamily Larentiinae is distributed worldwide and approximately 39 genera are shared among the Palearctic and Nearctic regions. Therini is a tribe of the Larentiinae and the type genus *Thera* Stephens occurs in the Holarctic region. Pierce (1914) placed *Thera* as a distinct group, Therinae, which is now referred to as a tribe (Hollo-

way, 1997). Concurrently, Prout (1914) placed *Thera* as a subgenus within *Cidaria*, sensu lato, and subdivided the genus into two subgenera separated by the structure of the male antennae (shortly ciliated vs. bipectinate). Later, Prout (1941) upgraded *Thera* to the generic level.

Since the works of Pierce and Prout, several new genera and species within the Therini have been described, mainly from the

¹ Kalbfleisch Fellow, Division of Invertebrate Zoology, American Museum of Natural History.

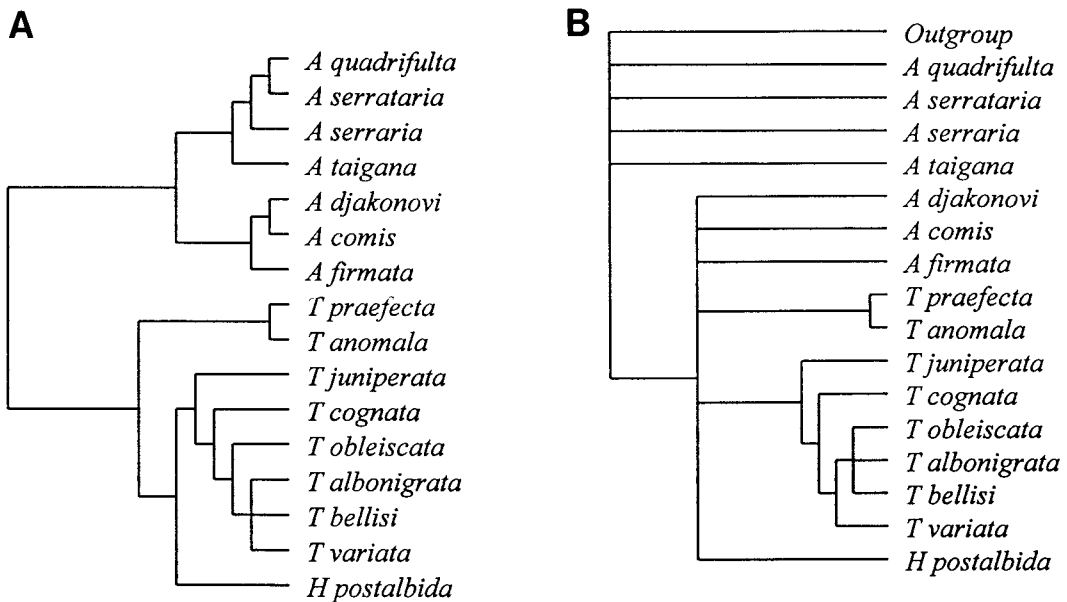


Fig. 1. Viidalepp's (1980) generic relationships of *Thera* and related genera. **A**, Viidalepp's phylogram, redrawn from his fig. 1; **B**, the strict consensus cladogram of 55 cladograms from the reanalysis, see appendix 2. Abbreviations: **A** *Asaphodes*, **H** *Heterothera*, **T** *Thera*.

Oriental region. Inoue (1943) described the monotypic genus *Heterothera*, and Viidalepp (1980) subdivided Therini (sensu Prout) into five genera: *Asaphodes* Meyrick sensu Viidalepp, *Pennithera* Viidalepp, *Heterothera* Inoue, *Praethera* Viidalepp, and *Thera*, although the first one (*Asaphodes* sensu Viidalepp) was replaced by *Viidaleppia* by Inoue (1982). Later, Choi (1997) synonymized *Viidaleppia* with *Heterothera* and further proposed a genus from southwestern China, *Diathera* (Choi, 1999). Presently the Therini includes 5 genera and about 50 species worldwide: *Thera* Stephens (1831), *Praethera* Viidalepp (1980), *Pennithera* Viidalepp (1980), *Heterothera* Inoue (1943), and *Diathera* Choi (1999). Since most species of *Asaphodes* occur in Australia and New Zealand and are closely related to *Xanthorhoe* Hübner (Dugdale, 1988), this genus is excluded from the Therini.

Here I present a cladistic analysis of the Therini based on adult morphology. The analysis will focus on two things. First, a test of the monophyly of the Therini and an examination of relationships between Therini and Cidariini. Since my previous cladistic analysis (Choi, 1997), several papers have

described additional members of the Cidariini (*Paradysstroma* Choi, 1998 and *Pseudodysstroma* Heydemann, 1961) and Therini (*Heterothera* and *Diathera*) (Choi, 1998a, 1998b, 1999) and confused our understanding of the phylogeny of these moths. Many synapomorphies for *Pennithera*, *Heterothera*, and *Thera* were found to be homoplastic, also occurring in *Paradysstroma* and *Pseudodysstroma*. For example, the presence of cucullus hairs and saccular processes in the male genitalia were synapomorphic for *Heterothera*, but these occur in *Pseudodysstroma* and *Diathera* as well. Similarly the corona-shaped processes at the distal part of the aedeagus, an autapomorphic character for *Thera*, is also observed in several species of *Heterothera* (see Choi, 1998a). Such homoplasy prompted the present analysis.

The second focal point is to understand the generic placement of *Thera exangulata* (Warren) and *T. cyphoschema* Prout. These taxa were included in the Therini by Prout (1938, 1941). Although I have described the genitalia and other aspects of morphology of these species (Choi, 1998a), the placement of these taxa remains uncertain.

Members of the Therini occur mainly in

Asia, except for *Thera*, which is Holarctic in distribution. Many of the Asian species are endemic to southwestern China, Taiwan, or northern India: four species of *Pennithera* and two species of *Heterothera* are endemic to Taiwan; six species of *Heterothera*, and all species of *Diathera* are endemic to southwestern China; and eight species of *Heterothera* are endemic to northern India. Thus, understanding of interrelationships of *Thera* and other Asian genera will provide the basis for future biogeographic studies.

MATERIALS AND METHODS

TAXA AND CHARACTERS

The ingroup comprised 38 species from the Holarctic and northern Oriental regions: 7 species of *Thera*, 1 *Praethera*, 8 *Pennithera*, 17 *Heterothera*, 3 *Diathera*, as well as "*Thera cyphoschema*" and "*T. exangulata*" (see appendix 1). In total, 49 characters from the genitalia and other morphological structures were used.

Adult specimens were obtained from the following museums and private collections: American Museum of Natural History, New York; Bulgarian Natural History Museum, Sofia; Hungarian Natural History Museum, Budapest; Institute of Botany and Zoology, Tartu; private collection of Katsumi Yazaki, Tokyo; The Natural History Museum, London; Zoologisches Forschungsinstitut und Museum Alexander Koenig, Bonn; Zoological Museum, Helsinki; and Zoologische Staatssammlung München, Munich. Male and female genitalia were prepared by soaking the abdomen in cold 10% KOH for approximately 24 hours. Scales and tissues were removed, stained with Chlorazol Black, and mounted on slides in Euparal. Electron micrographs were taken with a Hitachi S4700 Field Emission Scanning Electron Microscope (FE-SEM). Morphological terms follow Forbes (1948) and Scoble (1992).

CLADISTIC ANALYSIS

The data matrix is provided in table 1. Five outgroups were used to root cladograms, all belonging to the tribe Cidariini: *Cidaria fulvata* (Forster), *Plemyria rubiginata* (Denis and Schiffermüller), *Dysstroma*

truncatum (Hufnagel), *Paradysstroma corussarium* (Oberthür), and *Pseudodysstroma albovenosatum* (Heydemann). The choice of these outgroups was based on (1) a close relationship as shown by a previous cladistic analysis (*C. fulvata*, *P. rubiginata*, and *D. truncatum*; Choi, 1997) and (2) the fact that they share apomorphic characters with ingroup taxa for which ingroup relationships are ambiguous (*Paradysstroma corussarium* and *Pseudodysstroma albovenosatum*).

A parsimony-based computer program, NONA (Goloboff, 1993; Ver. 1.5; hold*hold/30mult*15), was used to find the most parsimonious trees. Multistate characters were treated as unordered during analyses.

ACKNOWLEDGMENTS

My sincere thanks to Jaan Viidalepp for providing material and translating his work (1980) into English and to David Grimaldi, Jim Miller, Fred Rindge, Toby Schuh (AMNH), Kauri Mikkola, and Malcolm Scoble for commenting on several versions of this manuscript and to Katsumi Yazaki (Tokyo), Kim Goodger (BMNH), Axel Hausmann (ZSM), and Dieter Stüning (ZFMK) for loaning material. Angela Klaus (AMNH) provided helpful assistance with scanning electron microscopy. I am very grateful to David Grimaldi, Michael Engel, Michael Pogue, and Jim Troubridge for reading the manuscript and offering appreciated criticism.

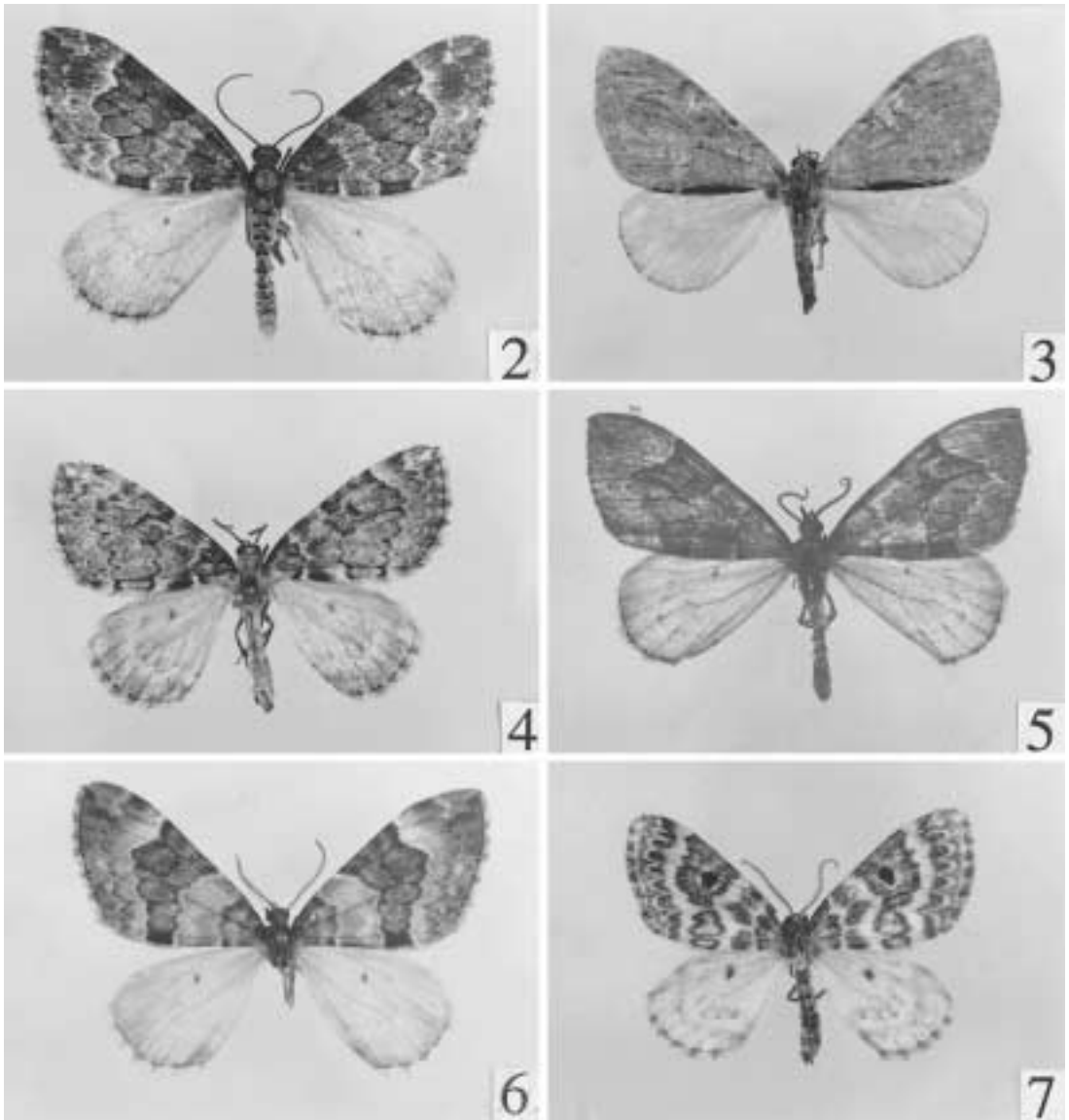
RESULTS AND DISCUSSION

CHARACTER ANALYSIS

Of the 49 characters, numbers 0–11 were from the head, thorax, and wing patterns; numbers 12–35 were from the male genitalia; and numbers 36–48 from the female genitalia.

HEAD AND BODY (figs. 2–23)

0. Antennae of male: (0) *filiform*; (1) *pectinate*. It is usual for species of moths in the Larentiinae to be diagnosed on the basis of bipectinate male antennae. Prout (1914) suggested that the groupings based on the antennal morphology of males or of both sexes do not always form natural taxa. However, even

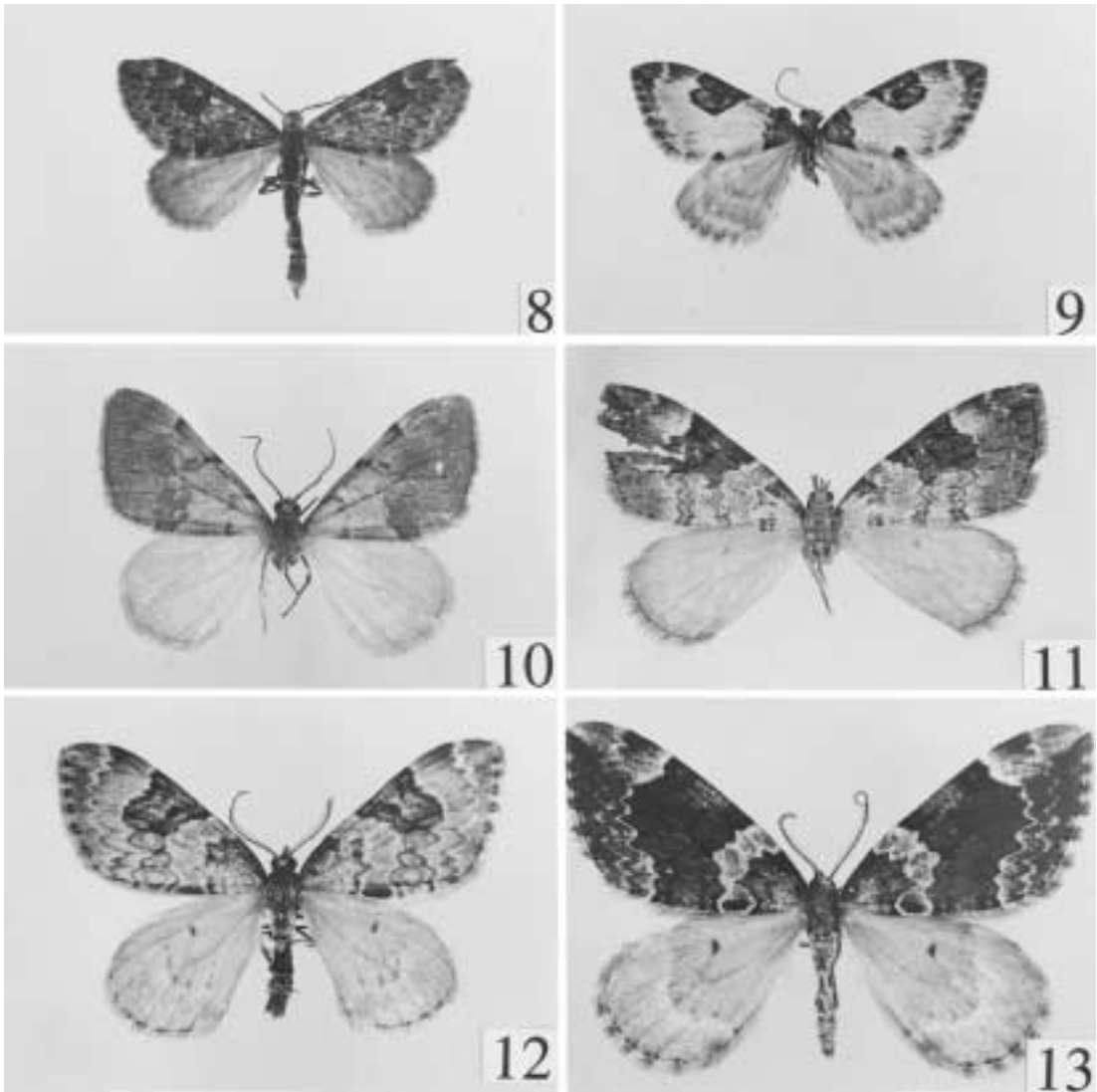


Figs. 2–7. Adults. 2. *Praethera praefecta*, 3. *Heterothera postalbida*, 4. *H. quadrifulta*, 5. *H. dentifasciata*, 6. *H. incerta*, 7. *H. serraria*.

todontidae moths are shorter on one side (Miller, 1991). The difference in length is observed in an ingroup species, *Heterothera firmata* (fig. 20). Viidalepp (1980) and Inoue (1986a) illustrated the differences in pectination between these genera. The present results show that pectinations are quadripectinate, but differ in orientation, opposite (*Heterothera firmata*, *H. taigana*, *H. serraria*;

figs. 20, 21, 23) or alternate (*Pennithera comis*; fig. 22). Different lengths of pectinations or cilia are common among the taxa examined and are difficult to code. Thus, I used two simple states, filiform versus pectinate.

1. Vertex: (0) black; (1) distinct with white scales. The vertex can be covered with either black or white scales. Several species



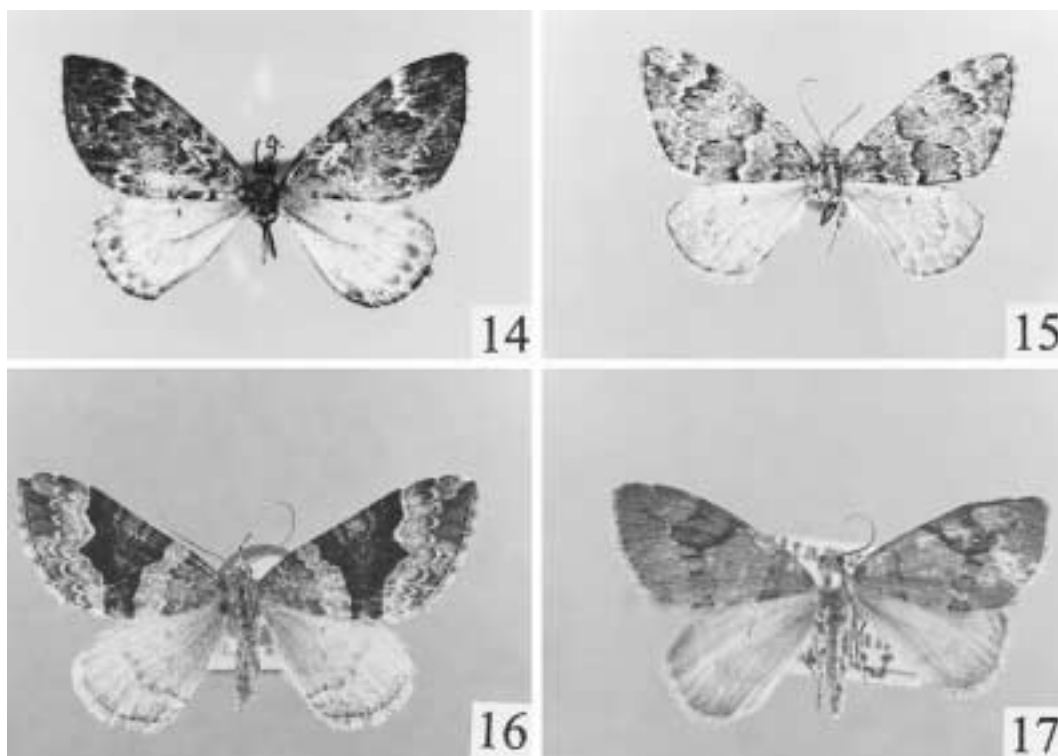
Figs. 8–13. Adults (continued). 8. *Thera variata*, 9. *T. vetustata*, 10. *T. firmata*, 11. *Diathera fluctuata*, 12. *Pennithera comis*, 13. *P. lugubris*.

of *Heterothera* and *Pennithera* have white scales on the vertex [e.g., *Heterothera eclinosis* Choi, *H. yunannensis* Choi, *H. hoenei* Choi, *Pennithera abolla* (Inoue), *P. lugubris* Inoue, *P. subalpina* Inoue].

2. Frons: (0) covered with uniformly colored scales; (1) mixed white or ochreous and blackish scales. Most of the ingroup taxa have the frons covered with white/ ochreous or blackish scales. Choi (1997) noted also that a rounded frons occurs in *Thera* and

Heterothera, and that this is an apomorphic character of *Cidariini*.

3. Foretarsal joints: (0) indistinct in that scales covering them are same color as scales on rest of leg; (1) distinct with white scales. The tarsal joints of forelegs are usually distinct with white scales in *Thera*, *Praethera*, and *Diathera*, but are indistinct in several species of *Pennithera* [*comis* (Butler) and *abolla* (Inoue)] and *Heterothera* [*serraria* (Lienig), *serrataria* (Prout) and *kurenzovi*



Figs. 14–17. Adults (continued). **14.** *P. distractata*, **15.** *P. djakonovi*, **16.** *Thera exangulata*, **17.** *T. cyphoschema*.

Choi, Viidalepp and Vasjurin]. Obscure tarsal joints are also observed in the outgroup taxa, except in *Cidaria fulvata* (which has white scales on the joints).

4. Meso- and metathorax: (0) middorsally white; (1) black.

5. Metathorax: (0) with white or yellow tufts; (1) with blackish tufts. Strong tufts occur on the dorsum of the metathorax, and this is often observed in some other taxa of the Larentiinae (Prout, 1914). It was noted that strong tufts occur on the metathorax in members of the Hydrimenini (Forbes, 1948) and Cidariini (Choi, 1997).

WINGS (figs. 2–17)

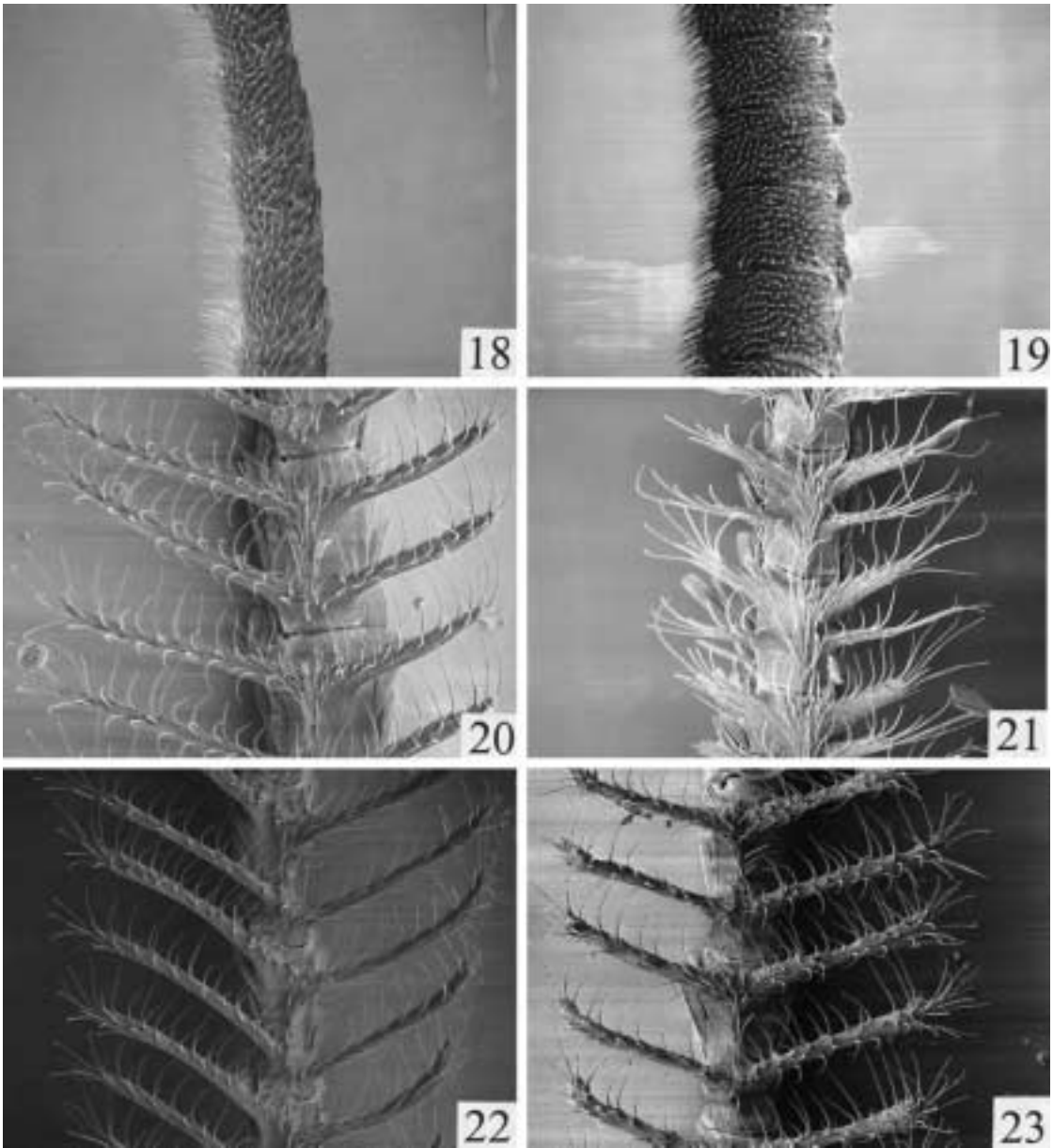
6. Shape of antemedial line of forewing, from costa to dorsum: (0) transverse, straight; (1) rounded or medially indented; (2) outwardly oblique.

7. Forewing between basal and ante-

medial lines: (0) unicolorous; (1) tinged with black scales.

8. Basal part of forewing dorsally with a black dot: (0) absent; (1) present, but dot small; (2) dot large. The pattern in the area between the basal and antemedial lines of the forewing varies in Therini. *Pennithera* is distinct by having a black dot on the dorsum. Some species of *Heterothera* [e.g., *quadri-fulta* (Prout), *taigana* (Djakonov), *incerta* Inoue, and *consimilis* (Warren)] also have a small dot at the dorsum, but they differ from *Pennithera* in having a black band in the area between basal and antemedial lines (figs. 3, 4, 12, 13).

9. Discal dot of forewing united with costal part of antemedial line: (0) absent; (1) present. *Heterothera firmata* (Hübner), *H. etes* (Prout), and *Thera cyphoschema* have a long, thick discal dot united with the costal part of the antemedial line (fig. 10).



Figs. 18–23. Scanning electron micrographs of male antennae, ventral surface. **18.** *Thera variata* ($\times 110$), **19.** *Praethera praefecta* ($\times 150$), **20.** *H. firmata* ($\times 150$), **21.** *Heterothera taigana* ($\times 130$), **22.** *Pennithera comis* ($\times 110$), **23.** *H. serraria* ($\times 150$).

10. Dorsum of central fascia: (0) indistinct and uniform; (1) distinct with black scales.

11. Dorsum of forewing: (0) without a streak; (1) with a black horizontal streak. There are three patterns of black dots in *Pen-*

nithera and *Heterothera*: (1) a large round dot between the basal and antemedial line (e.g., *Pennithera lugubris* and *P. subcomis*) (figs. 12–13), (2) a long horizontal streak along the basal and central fascia (e.g., *Heterothera postalbida* (Wileman), *H. sororcula*

(Bastelberger), *H. tephroptilus* (Heyde-
mann), *H. mussooriensis* Choi) (fig. 3), and
(3) a blackish spot at the bottom of the cen-
tral fascia (e.g., *H. triangulata* Choi) (Choi,
1998a).

MALE GENITALIA

**12. Length of uncus compared to tegu-
men (figs. 24–28):** (0) shorter; (1) longer.
Three species of *Diathera* show a very long
uncus compared to the length of tegumen
and this long uncus is also observed in most
species of *Pennithera* and *Heterothera*.

**13. Length of tegumen compared to the
total length of vinculum and saccus:** (0)
same; (1) longer; (2) shorter. Tegumen
length is measured against the total length of
the vinculum and saccus. This character di-
vides Therini into three groupings: (*Praeth-
era*), (*Pennithera* and *Thera*), and (*Heteroth-
era* and *Diathera*). *Praethera* has a long tegu-
men, whereas *Thera* and *Pennithera* have a
short tegumen. *Diathera* and *Heterothera*
have nearly the same length between the tegu-
men and the total length of the vinculum
and saccus.

**14. Width of anterior end of tegumen
compared to posterior end (= vinculum):**
(0) same or slightly shorter; (1) greatly
shorter.

**15. Shape of anterior end of tegumen
(figs. 24–28):** (0) slightly invaginated; (1)
deeply invaginated.

**16. Juxta with strongly sclerotized hairs
(fig. 31):** (0) absent; (1) present. A unique
character of the juxta is observed in all spe-
cies of *Diathera*, which is a structure covered
with strongly sclerotized hairs.

17. Length of anellus lobe: (0) strongly
extended from juxta, reaching more than half
of uncus height; (1) slightly extended from
juxta, barely reaching bottom of uncus.

18. Shape of anellus lobes (figs. 29–36):
(0) digitiform, without expanded body; (1)
body expanded.

19. Anellus lobe: (0) unilobed; (1) bi-
lobed.

20. Surface of anellus lobe: (0) smooth;
(1) dentate.

21. Shape of anellus lobe: (0) digitiform;
(1) rounded; (2) triangular; (3) flattened.
The anellus lobes are lateral processes of the

juxta that supports the ventral part of the ae-
deagus and are usually distinct in most
groups of Cidariini (Choi, 1997). In Therini,
the anellus lobes are distinctive in their
length, sclerotization, and for the long apical
hairs. The different shapes of the body of the
lobes (e.g., triangular, cylindrical, or caplike)
provide diagnostic features for the species of
Heterothera, *Diathera*, and *Pennithera* (figs.
32, 35, 36): *Pennithera* possesses anellus
lobes with a strongly expanded body; and
Thera possesses digitiform lobes. But, the
shapes of the lobes in *Heterothera* vary. In
particular, the species from southwestern
China have greatly modified anellus lobes
that are bilobed with an expanded body, of-
ten with dentate surfaces: *Heterothera yun-
nanensis*, *H. eclinosia*, and *Pennithera dis-
tractata* (figs. 31, 33, 34).

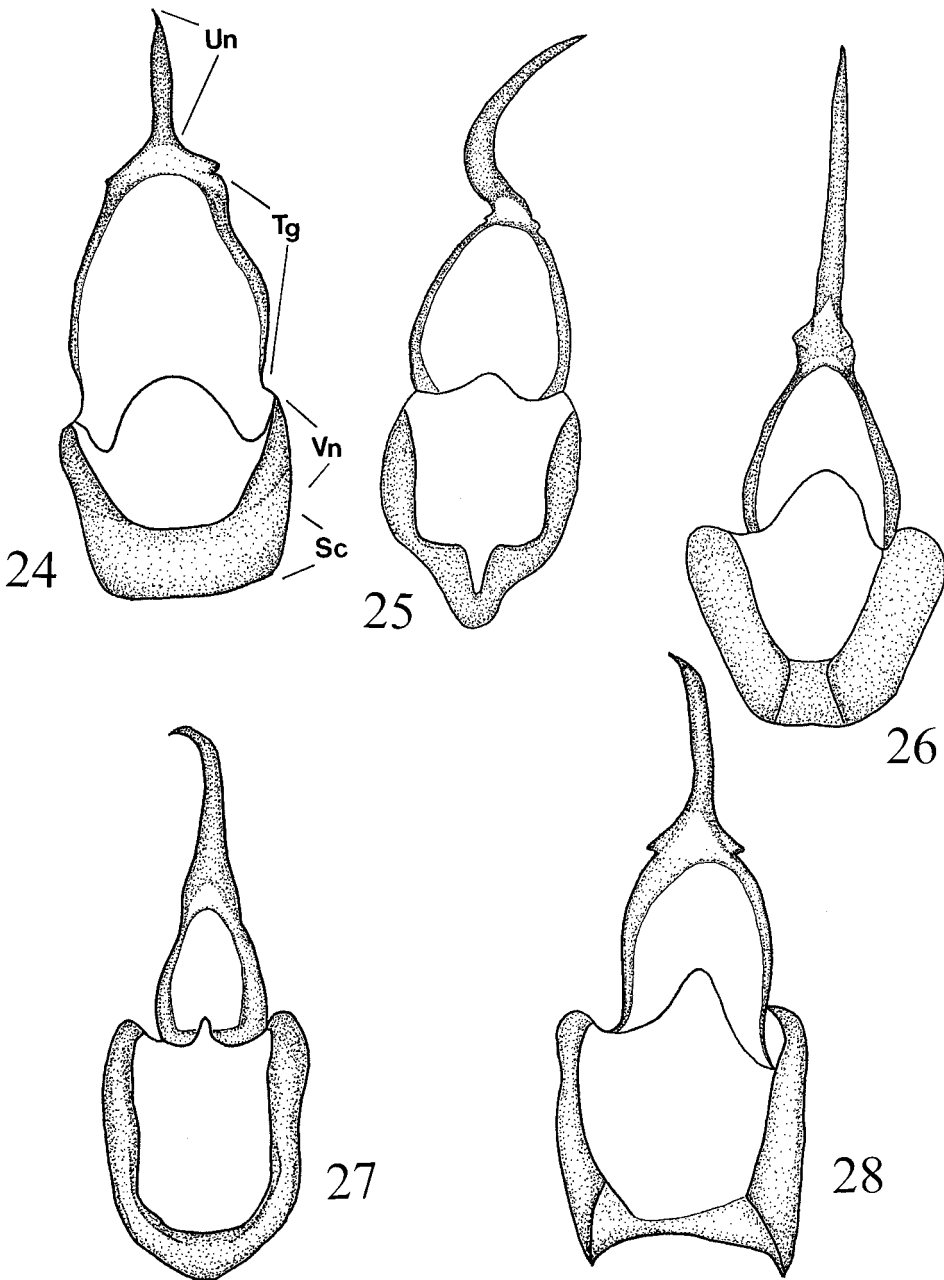
22. Transtilla: (0) simple, membranous;
(1) platelike, sclerotized; (2) thin, round,
sclerotized. The transtilla, the dorsal part of
the diaphragma, is usually simple and mem-
braneous in most ingroup taxa, whereas *The-
ra* shows a well-developed and sclerotized
transtilla. *Thera exangulata* has a thin, round,
sclerotized transtilla.

23. Shape of saccus (figs. 24–28): (0) flat
or round and medially slightly projected; (1)
medially invaginated; (2) medially strongly
projected. The shape of saccus shows three
states: (1) broad, flat, or round saccus
(*Praethera* and *Pennithera*) (fig. 24), (2) me-
dially invaginated or broad saccus (*Heteroth-
era* and *Diathera*) (figs. 26, 28), and (3) me-
dially strongly projected (*Thera*) (fig. 25). In
Thera and *Pennithera* the saccus shows a
sclerotized internal ring.

24. Costa of valva (figs. 37–44): (0) mem-
braneous; (1) sclerotized.

25. Shape of costa: (0) flat, not expanded;
(1) basally expanded (fig. 40); (2) medially
expanded (figs. 38, 41); (3) distally expand-
ed.

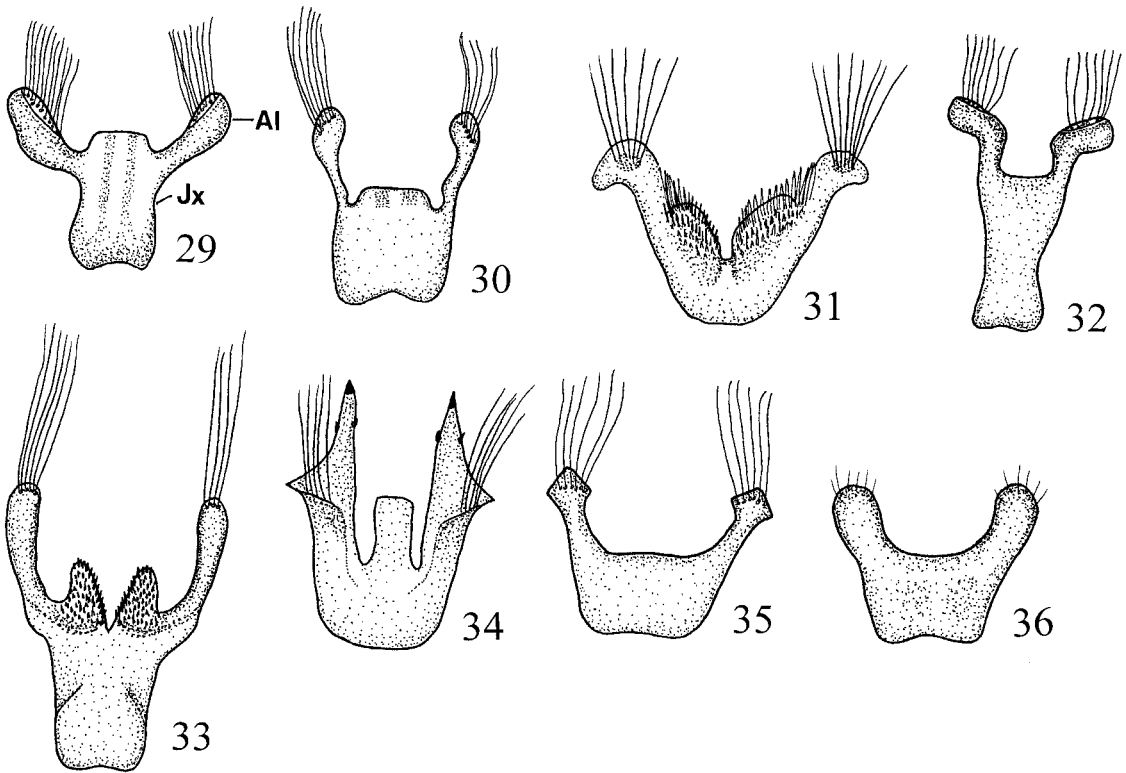
**26. Costa with a distal sclerotized pro-
cess:** (0) absent; (1) present. The costa,
which is the dorsal part of the valva, is fre-
quently modified and strongly sclerotized in
Therini and this has been most frequently
used by earlier authors (e.g., Viidalepp,
1980; Inoue, 1986a; Choi, 1997). In *Thera*,
Pennithera, and *Praethera*, the costa has im-
portant diagnostic characters: *Thera* with a



Figs. 24–28. Complex of tegumen, vinculum, and saccus of the male genitalia. **24.** *Praetheria praefecta*, **25.** *Thera variata*, **26.** *Diathera fluctuata*, **27.** *Pennithera comis*, **28.** *Heterothera postalbida*. **Un** uncus, **Tg** tegumen, **Vn** vinculum, **Sc** Saccus.

slender costa with a medial triangular projection; in *Pennithera* it is basally greatly enlarged and distally sharply pointed; in *Diathera* the base is minutely toothed and medially

greatly enlarged; in *Praetheria* it is long, slender, and distally sharply pointed. However, in *Heterothera* the shape of the costa varies: with a medial, triangular process sim-



Figs. 29–36. Anellus lobes of male genitalia. 29. *Praethera praefecta*, 30. *Thera variata*, 31. *Diathera fluctuata*, 32. *Pennithera comis*, 33. *P. distractata*, 34. *Heterothera yunnanensis*, 35. *H. postalbida*, 36. *H. serraria*. Jx juxta, Al anellus lobe.

ilar to *Thera* (fig. 41), or basally or distally expanded (fig. 42). Choi (1997) noted that the absence of the distal costal process is plesiomorphic.

27. Ventral edge of sacculus: (0) invaginated (figs. 37–41, 44); (1) flat (figs. 42, 43).

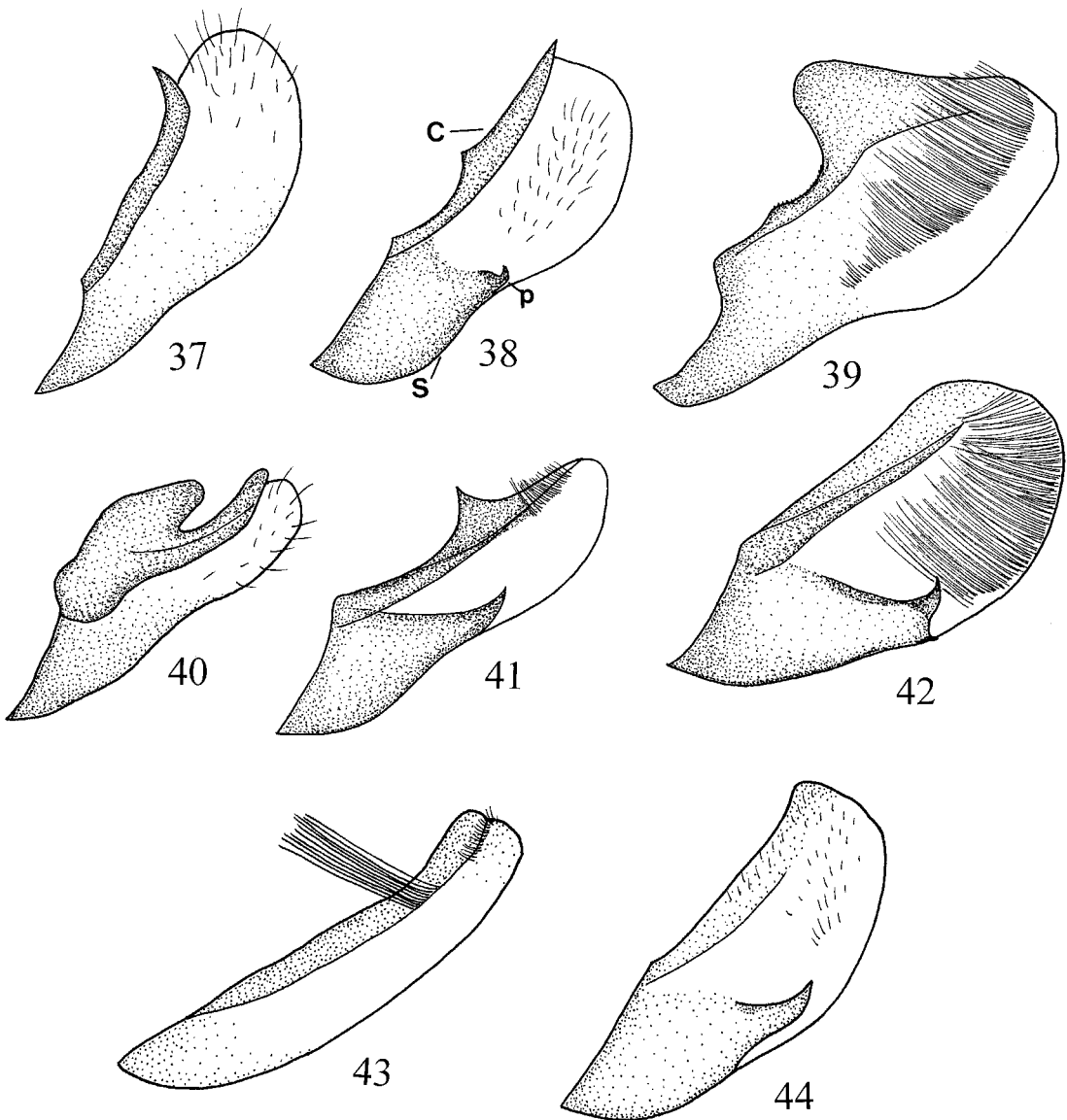
28. Shape of dorsal edge of sacculus: (0) indistinct; (1) vertical (fig. 38); (2) straight and oblique (figs. 41, 42); (3) scalloped.

29. Process of sacculus: (0) absent; (1) clawlike or sharply pointed (figs. 38, 41, 42, 44); (2) stellate.

30. Number of saccular processes: (0) absent; (1) one; (2) two. The sacculus divides Therini into two groups based on whether it is sclerotized or membraneous. The former includes *Thera* and *Heterothera*, the latter *Praethera*, *Diathera* and *Pennithera*. The triangular and sclerotized sacculus diagnoses *Heterothera*. The sclerotized sacculus is usu-

ally coupled with projected processes on the distal part of sacculus, which are often called the “harpe” (Inoue, 1986a). In *Heterothera*, the process varies from simple and setose (e.g., *tephroptilus*) to clawlike [e.g., *dentifasciata* (Hampson)] and stellate (*hoenei*). Four species of *Heterothera* have two processes [*postalbida*, *sororcula*, *undulata* (Warren) and *obscurata* Choi; Choi, 1998a] (fig. 42). This character was also used in Viidalepp’s (1980) analysis (his #2).

31. Width of valva: (0) wider distally (figs. 39, 42); (1) even width (figs. 41, 43); (2) wider basally (fig. 40). The width of the valva diagnoses some members of Therini. In *Praethera*, *Diathera*, and *Thera*, the distal part of valva is wider, whereas in *Pennithera* the basal part is wider. In *Heterothera*, the valva is usually wider distally, except for three species (*serraria*, *serrataria* and *kurenzovi*) that have a basally wider valva.



Figs. 37–44. Right valva of male genitalia. **37.** *Praethera praefecta*, **38.** *Thera variata*, **39.** *Diathera fluctuata*, **40.** *Pennihera comis*, **41.** *Heterothera serraria*, **42.** *Heterothera postalbida*, **43.** *Thera exangulata*, **44.** *Thera cyphoschema*. C costa, S sacculus, p saccular process.

32. Distal part of the aedeagus: (0) membranous, without spines; (1) scobinate (figs. 47, 49, 50); (2) with large spines (fig. 46). Therini has several derived character states on the distal part of the aedeagus. The distal spines in *Thera* have often been termed cornuti (e.g., Viidalepp, 1980; Choi, 1997), and this state may be a symplesiomorphy of *Thera* and *Heterothera* (Choi, 1998a). The scob-

ination of the distal part of the aedeagus is morphologically part of the juxta. Because these two parts are fused, they are usually broken in genitalic preparations.

33. Shape of the vesica: (0) large, saclike (fig. 51); (1) tubular (fig. 45)

34. Cornutus: (0) absent; (1) large, spinular; (2) small setae; (3) mixed large and small spines.

35. Cornuti: (0) absent; (1) grouped into one patch; (2) grouped into several patches; (3) without grouping, scattered. Viidalepp (1980) divided the states of the cornuti into primary and secondary losses. For example, *Pennithera djakonovi* (Kurentzov) is coded as a primary loss because it lacks cornuti in the vesica. But most species of *Thera* are coded as secondary because they lack cornuti in the vesica while having spinal processes at the distal part of the aedeagus. Viidalepp also suggested that the presence of cornuti is a derived character in Therini.

The shape of the vesica is coded as tubular or large and saclike. For most ingroup taxa the vesica is tubular, whereas some outgroup taxa (*Dysstroma truncatum*, *Plemyria rubiginata*) and *Thera exangulata* have a large, saclike vesica. Choi (1997) noted that several transformations occur in the vesica of *Heterothera*: several irregularly shaped diverticulae and many kinds of spinal processes and arrangements of the cornuti.

FEMALE GENITALIA

36. Seventh sternite: (0) simple, membranous; (1) with sclerotized processes; (2) scobinate. A densely scobinate seventh sternite diagnoses *Diathera*, while sclerotized processes diagnose *Pennithera*. In *Thera*, *Praethera*, and *Heterothera*, like outgroup taxa, the seventh sternite is simple and membranous.

37. Lamella antevaginalis (figs. 52–59): (0) membranous, without structures; (1) sclerotized with rounded structure; (2) sclerotized with two doughnutlike structures.

38. Lamella antevaginalis with processes: (0) absent; (1) minute spines; (2) large spines.

39. Lamella postvaginalis: (0) membranous; (1) sclerotized.

40. Lamella postvaginalis with processes: (0) absent; (1) large, barlike processes; (2) large, hornlike processes. Sterigmata (lamellae ante- and postvaginalis) occur around the ostium bursae and they are modified into various forms. Viidalepp (1980) noted that the well-developed sterigmata are plesiomorphic in this group. In *Heterothera*, these structures vary from simple (e.g., *consimilis*, *etes*, and *dentifasciata*) to spinelike (e.g.,

postalbida, *sororcula*, and *hoenei*) to large hornlike processes (e.g., *taigana*). In *Thera* there is no distinction between the lamella antevaginalis and the lamella postvaginalis, because the two structures are fused and semicircular (fig. 53).

41. Length of ductus bursae compared to corpus bursae: (0) shorter; (1) longer.

42. Ductus bursae with a colliculum: (0) present; (1) absent.

43. Ductus bursae: (0) membranous; (1) sclerotized; (2) with sclerites. The shape of the ductus bursae of *Heterothera* is variable. Unlike outgroup taxa, in which it is short and membranous with a colliculum, *Heterothera* and *Pennithera* have a sclerotized wall or sclerites in the ductus bursae. The shape of the ductus bursae in these taxa may be long, twisted, or basally greatly expanded. *Thera* and *Diathera* have a membranous ductus bursae, but lack a colliculum.

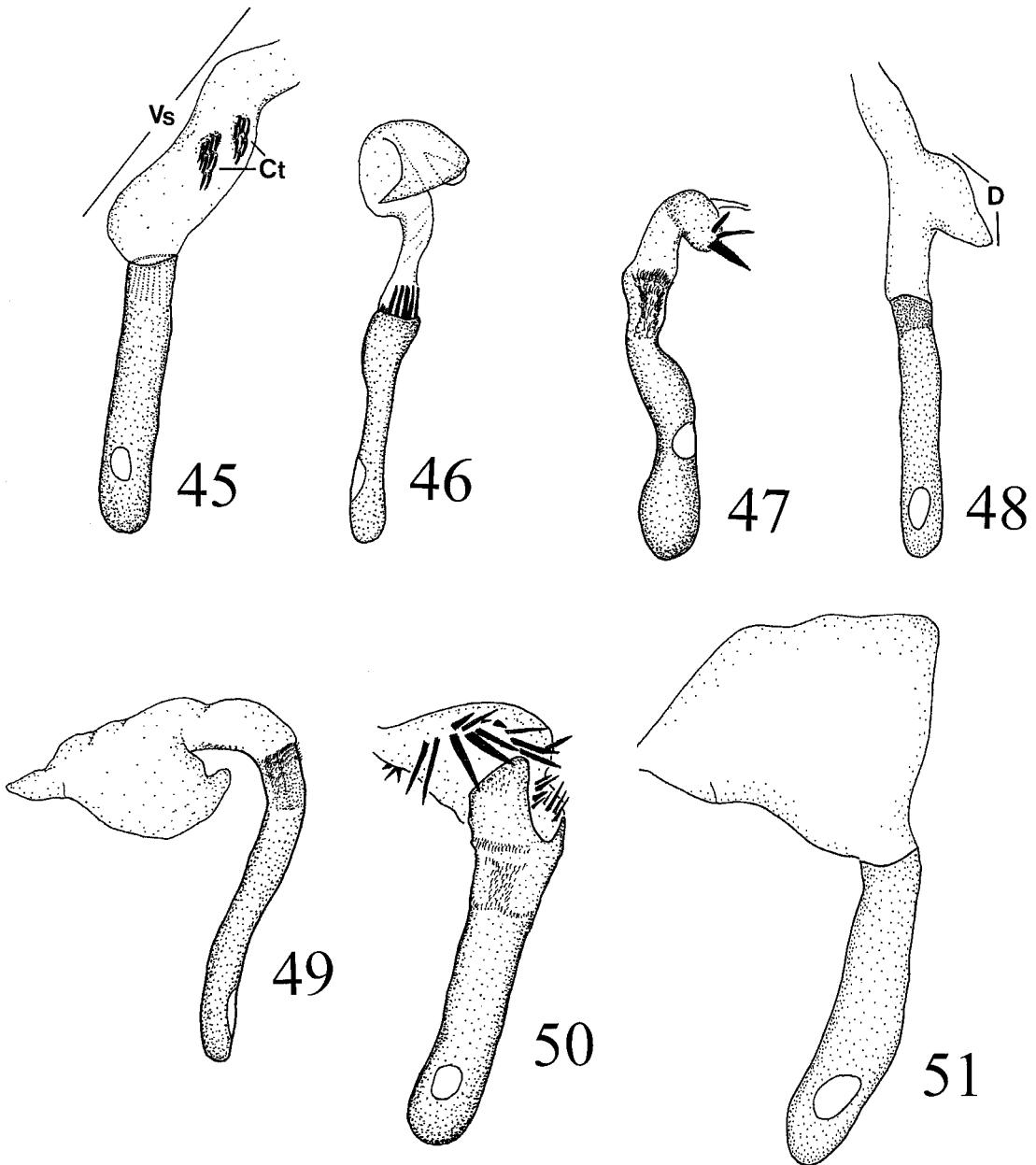
44. Basal ductus bursae (anterior to antrum): (0) simple, without modification; (1) funnel-shaped; (2) rounded and sclerotized. The basal part of the ductus bursae (anterior to the antrum) is usually simple and membranous. Two species (*Plemyria rubiginata* and *Thera cyphoschema*) have a ductus bursae basally funnel shaped (fig. 58), but in several species of *Heterothera* (*serraria*, *serrataria* and *kurenzovi*) it is strongly sclerotized with a rounded opening.

45. Distal ductus bursae: (0) membranous; (1) flattened and sclerotized.

46. Posterior corpus bursae: (0) simple, membranous; (1) with sclerotized striations; (2) simple, sclerotized. The area between the ductus bursae and the corpus bursae is usually simple and membranous. But, several species of *Heterothera* (*serraria*, *serrataria*, and *kurenzovi*) have the corpus bursae strongly sclerotized.

47. Signum: (0) one-process; (1) several, placed in a patchlike band; (2) absent; (3) large, threadlike sclerite. Viidalepp (1980) indicated that the absence of a signum is a derived character of the Therini. In *Thera*, *Pennithera*, *Heterothera*, and *Diathera*, a signum is absent, whereas in *Praethera*, a minute nipple-shaped signum occurs (fig. 52). One species (*Thera exangulata*) shows a large, threadlike signum (fig. 59).

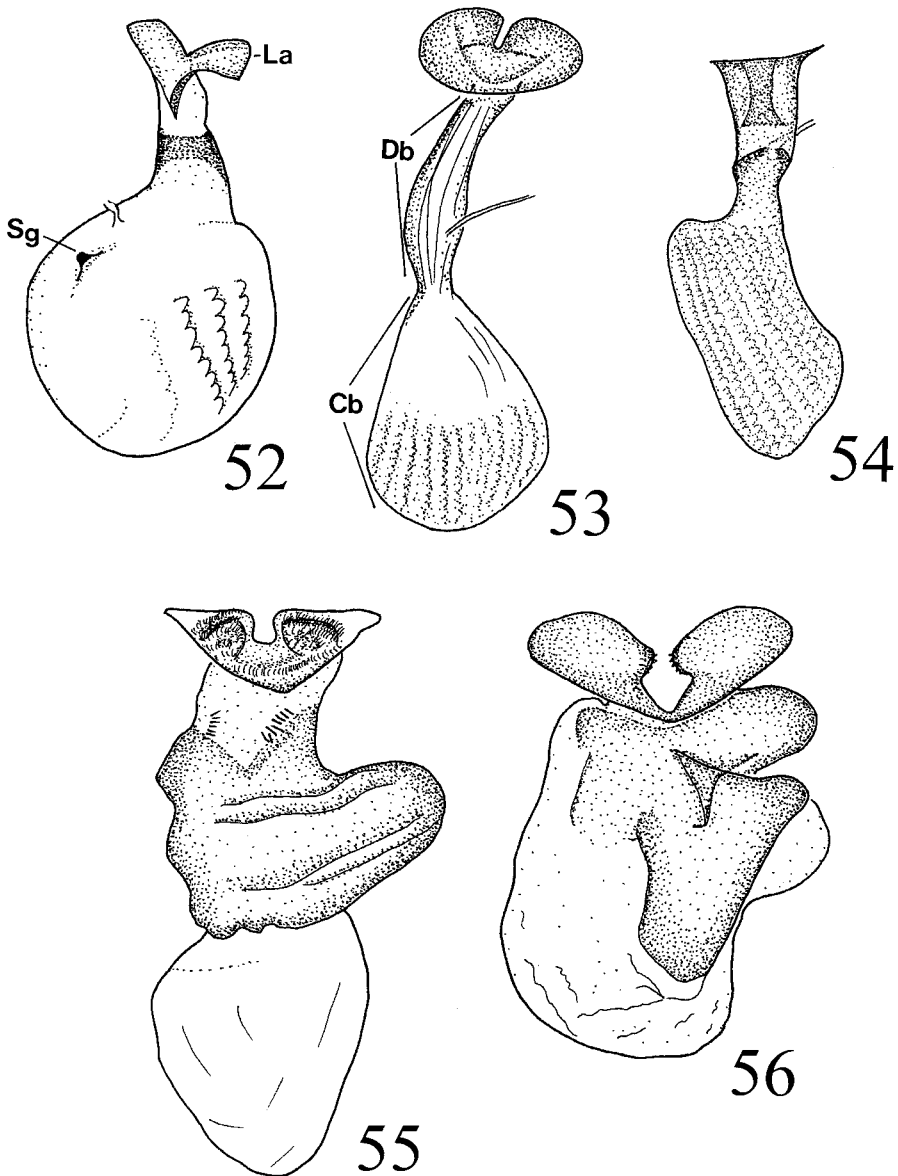
48. Wall of the corpus bursae: (0) sim-



Figs. 45–51. Aedeagus with everted vesica of male genitalia. 45. *Praethera praefecta*, 46. *Thera variata*, 47. *Pennithera comis*, 48. *Thera cyphoschema*, 49. *Diathera fluctuata*, 50. *Heterothera quadrifulta*, 51. *Thera exangulata*. Vs vesica, Ct cornuti, D diverticulum.

ple, membranous; (1) with wavelike striations; (2) with minute scobinations; (3) net-like and sclerotized. In *Heterothera*, the wall of the corpus bursae varies from simple (e.g., *tephroptilus*, *sororcula*, and *quadrifulta*) to having wavelike striations (e.g., *ku-*

renzovi) to minutely scobinate (e.g., *incerta*, *yunnanensis*, and *eclinosis*) (figs. 55, 56). In *Pennithera*, the wall is usually membranous and simple (fig. 57), but in *Thera*, *Diathera*, and *Praethera* wavelike striations are observed (figs. 52–54). Exceptionally,



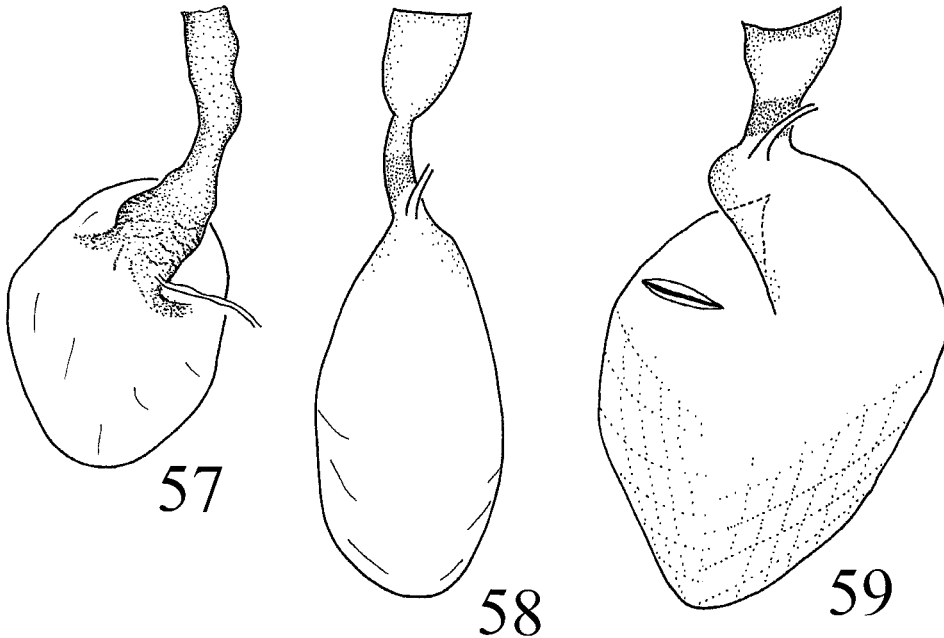
Figs. 52–56. Sterigmata, ductus, and corpus bursae of female genitalia. **52.** *Praetheria praefecta*, **53.** *Thera variata*, **54.** *Diathera fluctuata*, **55.** *Heterothera quadrifulta*, **56.** *H. serraria*. **La** lamella antevaginalis, **Sg** signum, **Db** ductus bursae, **Cb** corpus bursae.

Thera exangulata has a netlike, sclerotized wall (fig. 59).

CLADISTIC ANALYSIS

NONA produced 45 cladograms of length 256, consistency index = 0.30, and retention index = 0.66. The strict consensus clado-

gram is shown in figure 60. The successive weighting approach (Farris, 1969) for these 45 cladograms was applied by NONA and after two iterations one cladogram of weighted length 7819 was stabilized (table 2, fig. 61). The cladogram derived from the successive weighting provides better resolved ge-



Figs. 57–59. Sterigmata, ductus, and corpus bursae of female genitalia (continued). 57. *Pennithera comis*, 58. *Thera cyphoschema*, 59. *Thera exangulata*.

neric interrelationships than the original cladograms: (*Thera cyphoschema*, (*Heterothera*, (*Thera*, (*Diathera*, *Pennithera*))))).

THERINI, A SYNONYM OF CIDARIINI

Both present analyses show that the tribe Therini is not monophyletic and both (figs. 60, 61) excluded *Praetheria* from the ingroup taxa. Therefore, the results do not support the tribe Therini, and suggest that the Cidariini should be applied as the appropriate name for all ingroup taxa.

Both unweighted and successive weighting approaches support most ingroup taxa, *Praetheria*, *Thera*, *Pennithera*, and *Diathera*, and the positions of two unplaced taxa, *T. exangulata* and *T. cyphoschema*, turned out to be part of a very basal member. Differences among the trees were a result of the placement of several taxa in *Heterothera*, *Heterothera firmata*, and the *serraria* group of *Heterothera* (*serraria*, *serrataria*, and *kurenzovi*). In the original cladograms, *H. firmata* was a basal taxon of *Pennithera* or formed an independent clade with the *serraria* group.

In his analysis for 16 species of *Thera* sen-

su Prout, Viidalepp (1980) divided this group into three genera and four subgenera (fig. 1), suggesting that Prout's classification was unnatural. A cladistic analysis of the Cidariini resulted in some relationships different from Viidalepp's hypothesis (Choi, 1997)—specifically that *Heterothera* was paraphyletic. Choi also indicated that the basal node of three genera, *Thera* + *Pennithera* + *Heterothera*, was supported by several synapomorphies. In the present analysis my preferred cladogram (fig. 61) resolves the generic relationships without *Praetheria*: (*Fascilunaria*, (*Heterothera*, (*Thera*, (*Pennithera*, *Diathera*))))), and the basal clade is supported by three synapomorphies: male antennae bipectinate (character #0-1), antemedial line of forewing rounded or medially indented (#6-1), and signum absent (#47-2).

The present analysis confirms four previously known monophyletic taxa, which is partly consistent with the results of Choi (1997). However, the result indicates that *Praetheria* is not closely related to *Thera*, and two new monotypic genera, *Fascilunaria* and *Costicoma*, and one combination, *Thera firmata* (Hübner), are suggested. Their formal classification is presented in appendix 1.

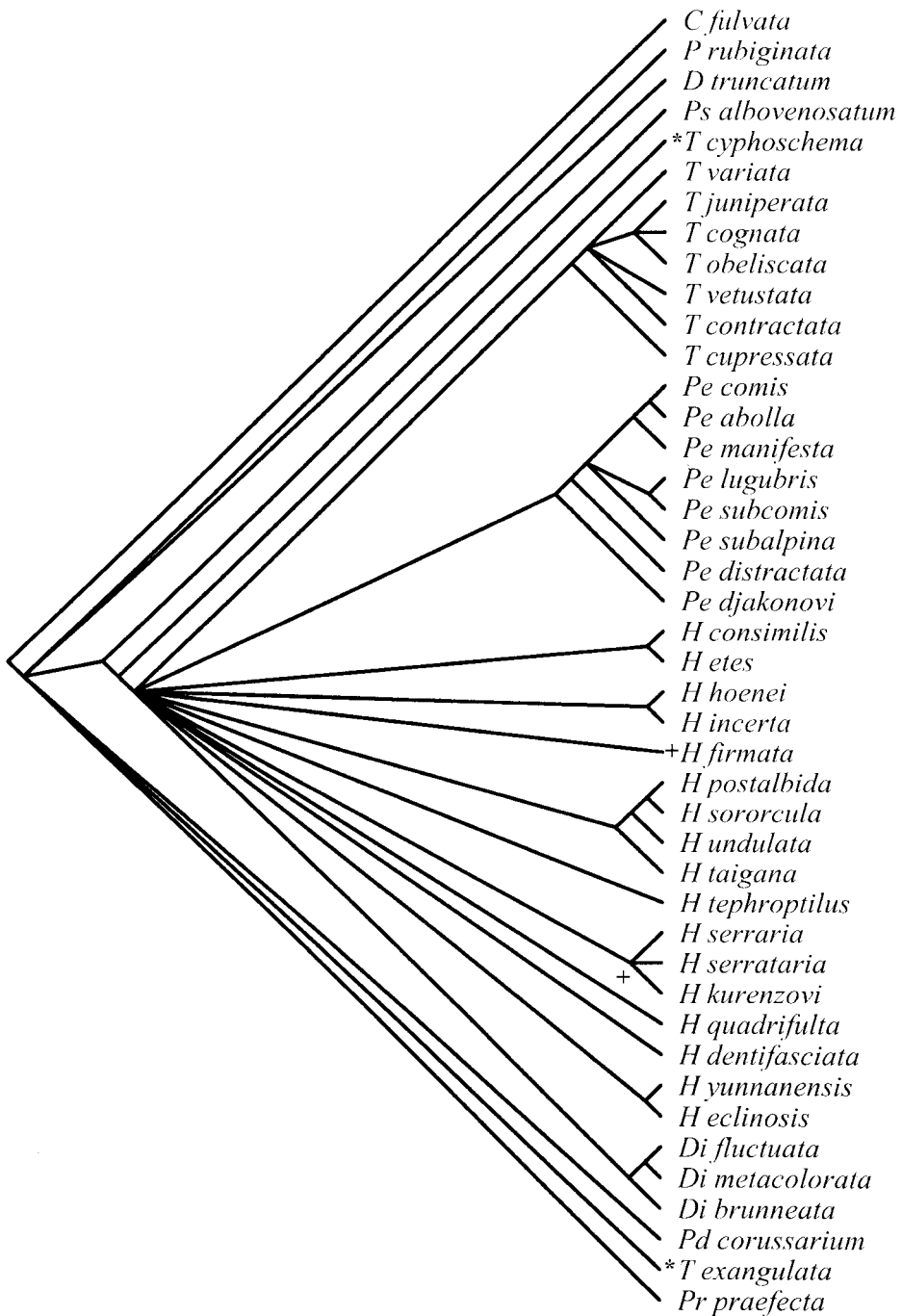


Fig. 60. Strict consensus cladogram derived from unweighted analysis using NONA. Abbreviations: **C** *Cidaria*, **D** *Dysstroma*, **P** *Plemyria*, **Pe** *Pennithera*, **Pd** *Paradysstroma*, **Pr** *Praetheria*, **Ps** *Pseudodysstroma*, **H** *Heterothera*, **T** *Thera*, **Di** *Diathera*. Plus signs (+) indicate a taxon or node that produces the polytomy in the consensus cladogram; asterisks (*) indicate taxa that have ambiguous taxonomic positions.

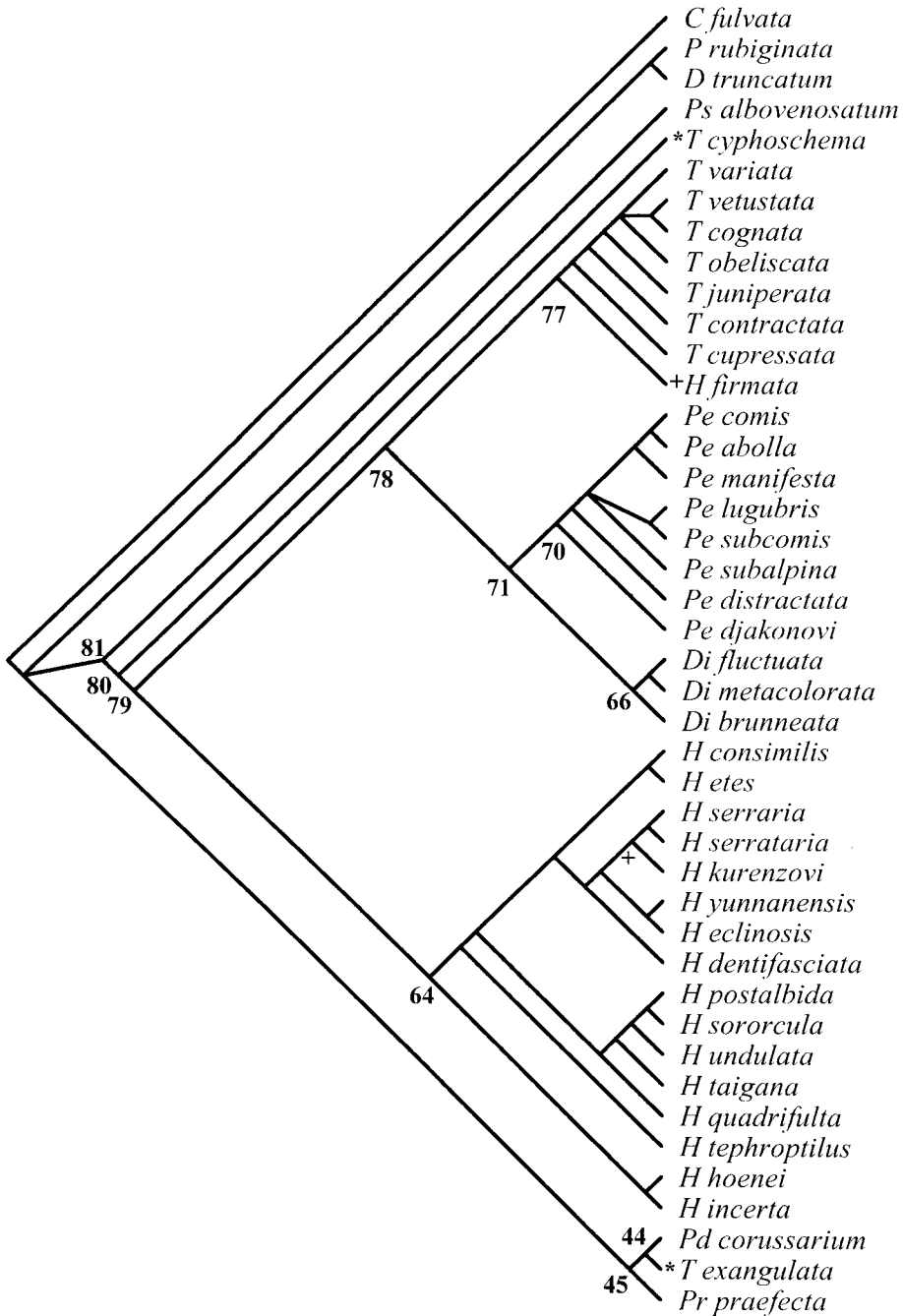


Fig. 61. One cladogram derived from successive weighting approach using NONA. See fig. 60 for generic abbreviations and symbols. Each node number is indicated.

TABLE 2
Characters and Their Final Weights
 Final weights were obtained after second iterations of
 the successive weighting procedure by NONA.

| | | | | | | | |
|--------------|-----|-----|-----|----|----|-----|----|
| Character | 0 | 1 | 2 | 3 | 4 | 5 | 6 |
| Final weight | 20 | 10 | 33 | 33 | 16 | 16 | 16 |
| Character | 7 | 8 | 9 | 10 | 11 | 12 | 13 |
| Final weight | 10 | 33 | 33 | 12 | 33 | 12 | 25 |
| Character | 14 | 15 | 16 | 17 | 18 | 19 | 20 |
| Final weight | 100 | 100 | 100 | 16 | 12 | 50 | 50 |
| Character | 21 | 22 | 23 | 24 | 25 | 26 | 27 |
| Final weight | 37 | 100 | 33 | 50 | 37 | 12 | 14 |
| Character | 28 | 29 | 30 | 31 | 32 | 33 | 34 |
| Final weight | 60 | 66 | 66 | 28 | 25 | 50 | 30 |
| Character | 35 | 36 | 37 | 38 | 39 | 40 | 41 |
| Final weight | 37 | 100 | 18 | 33 | 50 | 100 | 16 |
| Character | 42 | 43 | 44 | 45 | 46 | 47 | 48 |
| Final weight | 25 | 25 | 66 | 50 | 66 | 100 | 33 |

SYSTEMATICS

Praethera Viidalepp, 1980

TYPE SPECIES: *Cidaria praefecta* Prout, 1914.

DIAGNOSIS: Species of *Praethera* are characterized by the filiform male antennae, the subdorsally greatly shrunken central fascia with third cell half as wide as second, the male genitalia having a long tegumen, slender and sclerotized costa of valva upturned distally, membraneous sacculus with a medially invaginated ventral edge and two bundles of cornuti on a tubular vesica, and the female genitalia having V-shaped, sclerotized lamella postvaginalis.

DISCUSSION: In the present analysis, one species of *Praethera* is supported by seven autapomorphies: dorsum of the central fascia distinct with blackish scales (character #10-1), anellus lobe with expanded and flattened body (#18-1, #21-3), valva width wider distally (#31-0), cornuti large, spinular (#34-1), and lamella postvaginalis with a V-shaped sclerotization (#39-1).

Wing patterns of *Praethera*, especially the shape of the central fascia, place this group in Therini, but several genitalic characters differ from *Thera* and are closer to *Dysstroma truncatum*: long tegumen compared to vinculum and saccus, sacculus membra-

neous, and presence of a colliculum and a signum.

Viidalepp (1980) demonstrated that *Praethera* is the sister group of *Heterothera*. He listed five apomorphic characters for *Praethera*: saccus massive and round; sacculus membraneous; last tergite of female abdomen quadrilateral; ductus bursae modified; and both the collar of the bursa copulatrix and sterigma well-developed and strongly sclerotized. However, the present analysis shows that *Praethera* is placed as the sister taxon of (*Paradysstroma corussarium* + *Costicoma exangulata*), not *Heterothera*. Two species of *Praethera* are known, *P. praefecta* (Prout, 1914) and *P. anomala* (Inoue, 1954), but the validity of the latter species is uncertain (Viidalepp, 1996). Both species occur in east Asia.

Costicoma, new genus

TYPE SPECIES: *Perizoma exangulata* Warren, 1909.

DIAGNOSIS: Species of *Costicoma* can be characterized by the forewing with blackish central fascia medially and dorsally greatly tapered, the valva with sclerotized costa and long hairs on the middle of costa, cornuti absent from vesica, and the female genitalia having the corpus bursae with a large, threadlike signum.

DESCRIPTION: Antenna filiform in both sexes. Frons mixed with ochreous and brownish scales. Labial palp short. Legs dark brownish, foreleg tarsal joints distinct with ochreous scales. Metathorax dorsum with blackish tufts. Forewing basally dark brown; basal line dentate, slanted; central fascia blackish, costally bulged; subterminal line whitish, scalloped; apical streak blackish. Hindwing whitish, basally tinged with blackish scales; postmedial line blackish. **Male genitalia.** Uncus long, basally tapering. Tegumen dome-shaped. Saccus rounded, medially expanded. Anellus lobe long, rod shaped, apically with long hairs. Transtilla thin, rounded, sclerotized. Valva slender; costa slender, distally with long hairs; sacculus membraneous. Aedeagus cylindrical with large, sac-like vesica; cornutus absent. **Female genitalia.** Papillae anales simple. Anterior apophyses about $\frac{2}{3}$ length of posterior apophy-

TABLE 3
Apomorphies in Cladogram Derived from Successive Weighting Approach Shown in Figure 61

| | | | | |
|---|--|--|--|--|
| <i>Plemyria rubiginata</i> char 23: 0 → 1 char 25: 0 → 2 char 27: 0 → 1 char 44: 0 → 1 char 48: 0 → 1 | <i>T. variata</i> char 7: 0 → 1 char 10: 0 → 1 <i>T. vetustata</i> char 10: 0 → 1 | <i>Praethera praefecta</i> char 10: 0 → 1 char 18: 0 → 1 char 21: 0 → 3 char 31: 1 → 0 char 34: 0 → 1 char 39: 0 → 1 | <i>H. quadrifulta</i> char 1: 0 → 1 char 34: 3 → 1 char 35: 3 → 2 char 37: 0 → 2 char 38: 0 → 1 | Node 44 char 4: 0 → 1 char 22: 0 → 2 |
| <i>Dysstroma truncatum</i> char 4: 0 → 1 char 6: 2 → 0 char 7: 0 → 1 char 31: 1 → 0 char 41: 1 → 0 char 46: 0 → 1 char 47: 0 → 1 | <i>T. cognata</i> char 6: 1 → 0 char 26: 0 → 1 <i>T. contractata</i> char 6: 1 → 2 char 7: 0 → 1 char 10: 0 → 1 char 26: 0 → 1 | <i>Heterothera hoenei</i> char 1: 0 → 1 char 25: 0 → 2 char 29: 1 → 2 | <i>H. taigana</i> char 6: 2 → 0 char 21: 1 → 3 char 23: 1 → 0 char 40: 0 → 2 | Node 45 char 24: 0 → 1 char 26: 0 → 1 char 41: 1 → 0 char 48: 0 → 1 |
| <i>Pseudodysstroma albovenosatum</i> char 8: 0 → 1 char 10: 0 → 1 char 38: 0 → 2 char 43: 0 → 1 | <i>T. obeliscata</i> char 2: 1 → 0 <i>Pennithera comis</i> char 1: 1 → 0 | <i>H. firmata</i> char 1: 0 → 1 char 9: 0 → 1 char 26: 0 → 1 char 34: 0 → 1 char 35: 0 → 1 char 43: 0 → 1 | <i>H. incerta</i> char 8: 0 → 1 char 28: 3 → 2 char 38: 0 → 1 char 41: 1 → 0 char 48: 0 → 2 | Node 64 char 28: 0 → 3 |
| <i>Paradysstroma corussarium</i> char 25: 0 → 2 char 34: 0 → 3 char 37: 0 → 1 char 42: 0 → 1 char 43: 0 → 1 char 46: 0 → 1 | <i>Pe. abolla</i> char 27: 0 → 1 <i>Pe. djakonovi</i> char 6: 1 → 2 char 13: 2 → 0 char 25: 2 → 0 | <i>H. postalbida</i> char 43: 1 → 0 | <i>H. etes</i> char 9: 0 → 1 char 11: 0 → 1 | Node 66 char 0: 1 → 0 char 16: 0 → 1 char 23: 0 → 1 char 31: 1 → 0 char 36: 0 → 2 |
| <i>Thera exangulata</i> char 12: 0 → 1 char 27: 0 → 1 char 33: 1 → 0 char 47: 0 → 3 char 48: 1 → 3 | <i>Pe. subalpina</i> char 18: 0 → 1 char 20: 0 → 1 <i>Pe. distractata</i> char 5: 1 → 0 char 6: 1 → 0 char 19: 0 → 1 char 20: 0 → 1 char 27: 0 → 1 | <i>H. tephroptilus</i> char 11: 0 → 1 char 17: 1 → 0 char 41: 1 → 0 <i>H. sororcula</i> char 7: 0 → 1 char 27: 1 → 0 | <i>H. dentifasciata</i> char 10: 0 → 1 <i>H. yunnanensis</i> char 10: 0 → 1 char 35: 3 → 1 char 40: 0 → 1 | Node 70 char 7: 0 → 1 char 43: 0 → 1 |
| <i>T. cyphoschema</i> char 9: 0 → 1 char 26: 0 → 1 char 41: 1 → 0 char 44: 0 → 1 | | <i>H. serraria</i> char 13: 2 → 0 char 17: 0 → 1 char 18: 0 → 1 char 21: 0 → 1 | <i>H. undulata</i> char 17: 1 → 0 char 32: 1 → 2 char 37: 0 → 1 <i>Diathera metacolorata</i> char 32: 1 → 2 <i>Di. brunneata</i> char 37: 0 → 1 | Node 71 char 29: 1 → 0 char 30: 1 → 0 |

ses. Sterigma membranous, antrum broad, funnel-shaped. Ductus bursae short with a colliculum. Corpus bursae large, subovate, with a long, threadlike signum.

DISCUSSION: There are four autapomorphies: uncus long (character #12-1); ventral edge of sacculus flat (#27-1); vesica large, saclike (#33-0), signum large, threadlike (#47-3), and wall of corpus bursae with net-like sclerotizations (#48-3).

Costicoma exangulata is similar to *Cidar-ia deletaria* Hampson in the male genitalia

having long hairs on the costa, but differs in the wing pattern and female genitalia (Choi, 1998a). Results here place *C. exangulata* as the sister taxon to *P. corussarium*, and the basal clade is supported by two apomorphic characters: blackish metathorax and thin, round transtilla. This taxon was included in the Therini (Prout, 1938), but is distinct from other species of Therini based on several apomorphic characters (Choi, 1998a): costa of valva strongly sclerotized with long hairs; large saclike vesica without a cornutus; os-

tium bursae broad; colliculum present; signum large, threadlike, and wall of corpus bursae with netlike sclerotization. Differences in wing pattern and genitalia separate *exangulata* from its sister genus *Paradysstrota*, suggesting a new genus, *Costicoma*. It is only known from northern India.

ETYMOLOGY: The name refers to long hairs on the costa in the male genitalia, *Costa* (*Costa*) + Hairs (*Coma*).

Fascilunaria, new genus

TYPE SPECIES: *Cidaria cyphoschema* Prout, 1926.

DIAGNOSIS: Synapomorphies for *Fascilunaria* include bipectinate male antennae, the thin and crescent central fascia of the forewing with a discal dot united with costal part of the antemedial line, the male genitalia with a thick and short uncus, a saccular process, cornuti absent from vesica and the female genitalia with a simple sterigma, anterior to the antrum funnel shaped, a colliculum, and the large corpus bursae without a signum.

DESCRIPTION: **Antenna.** Male bipectinate with short pectination; female filiform. Frons white and ochreous scales. Labial palp long, about twice the eye diameter. Legs brownish, foreleg tarsal joints distinct with white scales. Metathorax dorsum with blackish tufts. Forewing grayish; basal line blackish, slanted; antemedial line blackish, medially strongly indented; postmedial line medially projected; central fascia thin. Hindwing whitish, with a black discal dot; postmedial line very weak. **Male genitalia.** Uncus short, thick. Tegumen dome shaped. Anellus lobe digitiform, medially and apically with hairs. Saccus rounded, medially projected. Valva weakly sclerotized; costa distally projected; sacculus with a process. Aedeagus slender, rod shaped, with a tubular vesica; cornutus absent. **Female genitalia.** Papillae anales simple. Anterior apophyses half of posterior apophyses in length. Sterigma simple, dorsally with thin, sclerotized stripes; antrum large, funnel shaped. Ductus bursae short, membranous, with a colliculum. Corpus bursae large, subspherical; signum absent.

DISCUSSION: *Fascilunaria cyphoschema* has four apomorphies: discal dot united with

the costal part of antemedial line (character #9-1), costa of the male valva with a distal expansion (#26-1), ductus bursae short (#41-0), and ductus bursae anterior to antrum funnel shaped (#44-1).

F. cyphoschema is similar to several members of *Heterothera* in the shape of the central fascia of the forewing as well as the anellus lobe and saccular process of the male genitalia. However, other aspects of the male and female genitalia of *F. cyphoschema* are different from those of *Heterothera*: uncus thick, short, and less sclerotized; cornutus absent; sterigma simple; anterior to antrum funnel shaped; membranous dustus bursae with a colliculum, and corpus bursae large. In the present analysis, the results demonstrate that *F. cyphoschema* forms a basal lineage of the clade comprising *Heterothera* + *Thera* + *Pennithera* + *Diathera* (fig. 61). This species is known from southwestern China, northern Vietnam and Burma (Choi, 1998a).

ETYMOLOGY: The name refers to the shape of the central fascia of forewing, central fascia (*Fascia*) + crescent (*lunaria*).

Thera Stephens, 1831

TYPE SPECIES: *Geometra variata* [Denis and Schiffermüller, 1775].

DIAGNOSIS: Members of *Thera* have filiform male antennae; central fascia of the forewing thin and medially and dorsally narrowed; male genitalia with hook-shaped uncus, transtilla thin, platelike, saccus medially projected, costa of valva strongly sclerotized with medial and distal projections, sacculus large, rounded, aedeagus slender with spinular processes distally; and female genitalia having lamella antevaginalis sclerotized, rounded; ductus bursae thin, long without a colliculum and the corpus bursae ovate without a signum.

DISCUSSION: All species of *Thera* (except *firmata*) are united by four synapomorphies: male antenna filiform (character #0-0), saccus medially projected (#23-2), dorsal edge of sacculus vertically sclerotized (#28-1), and lamella antevaginalis two doughnutlike structures without a seta (#37-2). The basal clade comprising *Thera* and *T. firmata* is

supported by one synapomorphy: transtilla large, platelike (#22-1).

Stephens (1831) proposed the genus *Thera* by separating it from *Chesias* Treitschke based on differences of the palpi, wing pattern and host plant (fir or juniper). Viidalepp (1980) defined the monophyly of *Thera*: saccus tender and round; costa and sacculus of valva distinct; ductus bursae membranous; and sterigma sclerotized. Choi (1997) redefined the monophyly of the genus using 11 synapomorphies and listed four uniquely derived characters: costa of valva with a medial projection; cucullus large; and cornuti on vesica fewer and arranged in a crown shape. About 12 species of *Thera* are known and they occur widely throughout the Holarctic region.

T. firmata has seven autapomorphies: vertex distinct with whitish scales (character #1-1), discal dot of forewing united to the costal part of antemedial line (#9-1), costa of valva with a distal expansion (#26-1), cornuti on vesica large and spinular and grouped into one-patch (#34-1, #35-1), and ductus bursae sclerotized (#48-1). The species *T. firmata* is placed at the basal node of *Thera* in the successive weighting approach (fig. 61), but as a member of *Heterothera* (fig. 60). The status of this species was first discussed by Pierce (1914). He distinguished it from *Thera* based on structures of the genitalia. Later, Viidalepp (1980) moved it to *Pennithera*, on the basis of two apomorphies: indistinct sacculus and shortly bipectinate male antenna. However, Choi (1997) subsequently combined it with *Heterothera*, using three synapomorphies: apical streak of forewing absent, anellus lobe expanded, and saccus flat and broad. In the present analysis, *firmata* is again associated with *Thera*.

Pennithera Viidalepp, 1980

TYPE SPECIES: *Larentia comis* Butler, 1879.

DIAGNOSIS: Members of *Pennithera* have male antennae bipectinate; forewing with a black dot at dorsum between basal and antemedial line, ante and postmedial lines strongly scalloped; tegumen short with narrow anterior end; costa of valva sclerotized with large basal and distal projections; aedeagus bent; vesica with several spinular cor-

nuti; female seventh sternite sclerotized; sterigma simple; ductus bursae long, sclerotized without a colliculum; and corpus bursae small and ovate without a signum.

DISCUSSION: Eight species of *Pennithera* are united by two synapomorphies: forewing between basal and antemedial lines tinged with black scales (#7-1) and ductus bursae sclerotized (#43-1). Viidalepp (1980) proposed the genus *Pennithera* and included three species, *P. comis* (Butler), *P. djakonovi* (Kurentzov) and *P. firmata* (Hübner), based on two apomorphies: saccus massive and round, and last tergite of the female abdomen telescopic. Inoue (1982, 1986a) added five species, mainly from Taiwan: *P. abolla* (Inoue), *P. subcomis* (Inoue), *P. lugubris* Inoue, *P. manifesta* Inoue, and *P. subalpina* Inoue. Choi (1998a) combined one additional species *Thera distractata* Sterneck (1928).

Inoue (1986a, 1986b) noted that *Pennithera* is distinguished from *Viidaleppia*, a junior synonym of *Heterothera*, by quadripectinate male antennae with slender branches, costa of valva half-expanded basally, greatly invaginated medially and rounded distally; sacculus unsclerotized, cornuti few and thornlike; simple and unsclerotized lamellae ante- and postvaginalis, and slender ductus bursae. Choi (1997) listed six synapomorphies of *Pennithera*: male antenna with long pectinations; slender sacculus; female ninth abdominal segment long, nearly the same length as eighth tergite; long and sclerotized antrum; and twisted ductus bursae.

Diathera Choi, 1999

TYPE SPECIES: *Diathera fluctuata* Choi, 1999.

DIAGNOSIS: Members of *Diathera* have male antennae filiform; long uncus; juxta with short, strongly sclerotized hairs; costa of valva with minute dentate processes basally, greatly expanded medially; vesica without a cornutus; female eighth sternite scobinate; ductus bursae short, sclerotized, and the corpus bursae slender with scalloped processes on the wall.

DISCUSSION: The three species of *Diathera*, all from southwestern China, are united by five synapomorphies: male antenna filiform (character #0-0), juxta with strongly sclero-

tized hairs (#16-1), medially invaginated saccus (#23-1), valva wider distally (#31-0), and female seventh sternite scobinate (#36-2).

The species of this genus are similar to *Pennithera* externally, especially in the strongly scalloped ante and postmedial lines of the forewing. However, the structure of the male antennae and the male and female genitalia separate *Diathera* from *Pennithera*.

Heterothera Inoue, 1943

TYPE SPECIES: *Cidaria postalbida* Wileman, 1911. = *Viidaleppia* Inoue, 1982 [synonymized by Choi, 1997: 311]. Type species: *Cidaria quadrifulta* Prout, 1938.

DIAGNOSIS: Members of *Heterothera* are variable in the male antennae, the shape of central fascia of the forewing, and the genitalia. However, they generally show the following features: central fascia of the forewing rather thick, outwardly oblique; tegumen same length as vinculum and saccus; saccus medially invaginated; costa of valva sclerotized with medial or distal expansion; sacculus sclerotized with spinular process; cucullus with long, dense hairs; aedeagus long, cylindrical; vesica with several scattered, spinular cornuti; lamella ante- and postvaginalis complicated with spinular or patchlike structures; ductus bursae thick with sclerites on the wall; and corpus bursae without a signum.

DISCUSSION: In the present analysis, one synapomorphy, dorsal edge of sacculus scalloped (character #28-3), supports the grouping of 16 species of *Heterothera*. Inoue (1943) proposed the genus *Heterothera* based mainly on male genital characters: absence of uncus (this character was found to be incorrect; see Choi, 1997); long anal tube; saccus basally flat and broad; costa weakly sclerotized, and sacculus well-developed. Viidalepp (1980) noted that the broad, angulated saccus is the main derived character for the genus. As noted above, Inoue (1982) erected another genus, *Viidaleppia*. However, Choi (1997) synonymized *Viidaleppia* under *Heterothera* and listed seven synapomorphies: sacculus process (or harpe) small; cucullus with hairs; saccus medially invaginated; cornuti scattered on vesica; lamella antevaginalis with semicircular process; ductus

bursae relatively thick, and wall of ductus bursae with sclerotized processes.

KEY TO GENERA EXAMINED BASED ON GENITALIA

1. Tegumen longer than total length of vinculum and saccus; corpus bursae with a signum
Praethera (figs. 2, 21, 24, 29, 37, 45, 52)
- Tegumen shorter than total length of vinculum and saccus; corpus bursae without a signum 2
2. Sacculus sclerotized with a process; sterigma of female genitalia developed with sclerites 3
- Sacculus without a process; sterigma simple, without modification 5
3. Vesica without a cornutus; ductus bursae membranous 4
- Vesica with cornuti; ductus bursae sclerotized . . . *Heterothera* (figs. 3–7, 22, 23, 28, 35, 36, 41, 42, 50, 55, 56)
4. Uncus hooked; saccus strongly projected; aedeagus with distal spinular processes; sterigma with sclerotized processes
. . . *Thera* (figs. 8, 18, 25, 30, 38, 46, 53)
- Uncus short and thick; saccus rounded; aedeagus distal part without spinular process; sterigma simple, membranous
. *Fascilunaria* (figs. 17, 44, 48, 58)
5. Costa of male valva with long hairs; corpus bursae with a long signum
. *Costicoma* (figs. 16, 43, 51, 59)
- Costa without long hairs; corpus bursae without a signum 6
6. Costa of male valva with a large basal expansion; vesica with cornuti; ductus bursae sclerotized . . *Pennithera* (figs. 11–14, 20, 27, 32, 33, 40, 47, 57)
- Costa with a large distal expansion; vesica without cornuti; ductus bursae membranous *Diathera* (figs. 11, 26, 31, 39, 49, 54)

REFERENCES

- Choi, S.-W.
1997. A phylogenetic study on genera of Cidariini from the Holarctic and the Indo-Australian areas (Lepidoptera: Geometridae, Larentiinae). *Syst. Entomol.* 22: 287–312.
- 1998a. Systematics of the genus *Heterothera* Inoue (Lepidoptera, Geometridae: Larentiinae). *Tijdschr. Entomol.* 141: 19–47.
- 1998b. Taxonomic review of two genera *Pseudodysstroma* Heydemann and *Paradysstroma* gen. n. (Lepidoptera: Geo-

- metridae, Larentiinae). *Tinea* 15: 228–239.
1999. Taxonomic review of a new genus *Diathera* gen. n. from Southeast Asia (Lepidoptera, Geometridae: Larentiinae). *J. Nat. Hist.* 33: 1039–1048.
- Dugdale, J. S.
1988. Lepidoptera—Annotated catalogue, and keys to family-group taxa. *Fauna N. Z.* 14: 171–191.
- Farris, J. S.
1969. A successive approximations approach to character weighting. *Syst. Zool.* 18: 374–385.
- Forbes, W.T.M.
1948. Lepidoptera of New York and neighboring states. Part II. Cornell Univ. Agric. Exp. Stn. Mem. 274: 10–175.
- Goloboff, P. A.
1993. NONA, Ver. 1.5. San Miguel de Tucuman.
- Holloway, J. D.
1997. The moths of Borneo: family Geometridae, subfamilies Sterrhinae and Larentiinae. *Malay. Nat. J.* 51: 1–242.
- Inoue, H.
1943. New and little known Geometridae from Japan. *Trans. Kansai Entomol. Soc.* 12: 1–25.
1982. Geometridae 1: 425–572. In H. Inoue et al., *Moths of Japan*. Tokyo: Kodansha.
1986a. Further new and unrecorded species of the Geometridae from Taiwan with some synonymic notes (Lepidoptera). *Bull. Fac. Domest. Sci., Otsuma Woman's Univ.* 22: 211–267.
1986b. Descriptions and records of some Japanese Geometridae (VI). *Tinea* 12: 45–71.
- Miller, J. S.
1991. Cladistics and classification of the Notodontidae (Lepidoptera: Noctuoidea) based on larval and adult morphology. *Bull. Am. Mus. Nat. Hist.* 204: 1–230.
- Pierce, F. N.
1914. The genitalia of the group Geometridae of the Lepidoptera of the British Islands. Liverpool. 88 pp. + 48 pls.
- Prout, L. B.
1914. Geometridae. In A. Seitz (ed.), *Die Grossschmetterlinge der Erde—Die Palaarktischen Spanner*. 1(IV): 216–219. Stuttgart: Verlag A. Kernen.
1938. Geometridae. *Ibid.* (Suppl.): 110–170. Stuttgart: Verlag A. Kernen.
1941. Geometridae. In A. Seitz (ed.), *Die Gross Schmetterlinge des Indoaustral-*
ischen Faunengebietes. 12: 323–324. Stuttgart: Verlag A. Kernen.
- Scoble, M. J.
1992. *The Lepidoptera: form, function, and diversity*. New York: Oxford Univ. Press.
- Stephens, J. F.
1829–1831. *Illustrations of British Entomology*. *Haustellata* 3. London: Baldwin and Cradock.
- Viidalepp, J.
1980. Geometrid moths of the genus *Thera* Steph. in the fauna of the USSR (Lepidoptera). *Tartu Riikliku ülikooli Toimetised* 13(516): 54–84. [in Russian with English summary]
1996. Checklist of the Geometridae (Lepidoptera) of the former U.S.S.R. *Stenstrup: Apollo Books*. 111 pp.

APPENDIX 1

Formal Classification of Ingroup Taxa

Asterisks (*) indicate unexamined taxa.

Costicoma n. gen.

exangulata (Warren, 1909) n. comb.

Praethera Viidalepp, 1980

**anomala* (Inoue, 1954)

praelecta (Prout, 1914)

Diathera Choi, 1999

brunneata Choi, 1999

fluctuata Choi, 1999

metacolorata Choi, 1999

Pennithera Viidalepp, 1980

abolla (Inoue, 1943)

comis (Butler, 1879)

distractata (Sterneck, 1928)

djakonovi (Kurentzov, 1950)

lugubris Inoue, 1986

manifesta Inoue, 1986

subalpina Inoue, 1986

subcomis Inoue, 1978

Fascilunaria n. gen.

cyphoschema (Prout, 1926) n. comb.

Thera Stephens, 1829

**britannica* Turner, 1925

cognata (Thunberg, 1792)

contractata (Packard, 1873)

cupressata (Geyer, 1831)

firmata (Hübner, 1822) rev. comb.

juniperata (Linnaeus, 1758)

**latens* Barnes & McDunnough, 1917

obeliscata (Hübner, 1787)

**otsi* (Dyar, 1904)

variata (Denis & Schiffermüller, 1775)

**variolata* (Staudinger, 1899)

vetustata (Denis & Schiffermüller, 1775)

- Heterothera* Inoue, 1943
- consimilis* (Warren, 1888)
- **comitabilis* (Prout, 1923)
- dentifasciata* (Hampson, 1895)
- **distinctata* Choi, 1998
- eclinosis* Choi, 1998
- etes* (Prout, 1926)
- hoenei* Choi, 1998
- incerta* Inoue, 1986
- kurenzovi* Choi, Viidalepp & Vasjurin, 1998
- **mussooriensis* Choi, 1998
- **obscurata* Choi, 1998
- postalbida* (Wileman, 1911)
- quadrifulta* (Prout, 1938)
- serraria* (Lienig, 1846)
- serrataria* (Prout, 1914)
- sororcula* (Bastelberger, 1909)
- **stamineata* Choi, 1998
- taigana* (Djakonov, 1926)
- tephroptilus* (Heydemann, 1961)
- **triangulata* Choi, 1998
- undulata* (Warren, 1888)
- yunnanensis* Choi 1998

APPENDIX 2

Reanalysis of Viidalepp's Data Set

Here I present a reanalysis of the data presented by Viidalepp (1980). Fifteen characters appeared in the original diagram and most of them were binary, except for four characters (characters 4, 6, 7, 14) that he stated plesiomorphic, intermediate and apomorphic. I rescored these characters as multistate and treated them as additive in the analysis, because Viidalepp considered that the intermediate state was between the plesio- and apomorphy. Character number 15 was treated as inapplicable in the species of *Thera* and *Heterothera* because the male antennae of those species are filiform. The recoded data matrix was analyzed by Hennig86 using the implicit enumeration (ie*) using an all zero outgroup. This analysis resulted in 55 equally parsimonious trees with 33 steps, 57 consistency index, and 82 retention index. The strict consensus is shown in figure 1B.

| | 1 | 2 | 3 | 4 | 5 | 6 | 7 | 8 | 9 | 0 | 1 | 2 | 3 | 4 | 5 |
|-----------------------|---|---|---|---|---|---|---|---|---|---|---|---|---|---|---|
| <i>A. quadrifulta</i> | 0 | 0 | 0 | 0 | 1 | 0 | 0 | 0 | 0 | 1 | 0 | 1 | 0 | 0 | 0 |
| <i>A. serrataria</i> | 0 | 0 | 0 | 0 | 1 | 0 | 0 | 1 | 0 | 1 | 0 | 1 | 0 | 0 | 0 |
| <i>A. serraria</i> | 0 | 0 | 0 | 0 | 1 | 0 | 0 | 1 | 0 | 1 | 0 | 1 | 0 | 0 | 0 |
| <i>A. taigana</i> | 0 | 0 | 0 | 0 | 1 | 1 | 0 | 1 | 1 | 1 | 0 | 1 | 0 | 1 | 0 |
| <i>A. djakonovi</i> | 0 | 0 | 0 | 1 | 0 | 1 | 1 | 0 | 1 | 0 | 0 | 0 | 0 | 0 | 0 |
| <i>A. comis</i> | 0 | 0 | 0 | 1 | 0 | 1 | 1 | 0 | 1 | 0 | 0 | 1 | 1 | 0 | 0 |
| <i>A. firmata</i> | 0 | 0 | 0 | 1 | 0 | 2 | 2 | 0 | 1 | 1 | 0 | 1 | 0 | 0 | 0 |
| <i>T. praefecta</i> | 1 | 0 | 0 | 1 | 1 | 1 | 0 | 1 | 0 | 0 | 0 | 1 | 0 | 2 | - |
| <i>T. anomala</i> | 1 | 0 | 0 | 1 | 1 | 1 | 0 | 1 | 0 | 0 | 1 | 0 | 2 | - | - |
| <i>T. juniperata</i> | 1 | 0 | 0 | 2 | 0 | 2 | 0 | 1 | 0 | 1 | 0 | 2 | - | - | - |
| <i>T. cognata</i> | 1 | 0 | 0 | 2 | 0 | 2 | 0 | 1 | 1 | 1 | 0 | 0 | 2 | - | - |
| <i>T. obeliscata</i> | 1 | 0 | 0 | 2 | 0 | 2 | 0 | 1 | 1 | 0 | 1 | 1 | - | - | - |
| <i>T. albonigrata</i> | 1 | 0 | 0 | 2 | 0 | 2 | 0 | 1 | 1 | 0 | 1 | 1 | - | - | - |
| <i>T. bellisi</i> | 1 | 0 | 0 | 2 | 0 | 2 | 0 | 1 | 1 | 0 | 1 | 1 | - | - | - |
| <i>T. variata</i> | 1 | 0 | 0 | 2 | 0 | 2 | 0 | 1 | 1 | 0 | 1 | 2 | - | - | - |
| <i>H. postalbida</i> | 1 | 1 | 1 | 0 | 0 | 2 | 2 | 0 | 0 | 1 | 0 | 1 | 0 | 2 | - |

Characters and Character States

1. Antenna of male pectinate (0), filiform (1).
2. Sacculus processes simply pointed (0), bifid (1).
3. Uncus present (0), absent (1).
4. Saccus heavily sclerotized and broad, angulated platelike (0), massive and rounded (1), medially projected (2).
5. The last tergite of female abdomen with long apophyses and telescopic (0), with short apophyses and strongly sclerotized to limit the mobility of ovipositor (1).
6. The ductus and the collar of corpus bursae strongly sclerotized (0), intermediate (1), membranous (2).
7. Sterigma well developed and sclerotized (0), intermediate (1), simple and slightly sclerotized (2).
8. Eighth sternite of female abdomen simple (0), fused to sterigma (1).
9. Costa indistinct and fused to other part of valva (0), distinct (1).
10. Sacculus indistinct and fused to other part of valva (0), distinct (1).
11. Cornuti present in vesica (0), present in the dorsal part of aedeagus, corona-shaped (1).
12. Cornutus absent (0), present (1).
13. Uncus short (0), long (1).
14. Antenna of male pectinate (0), filiform with constricted or rounded ventral surfaces (1), filiform with cylindrical antennomeres (2).
15. Antennal pectination short (1), long (0).

Recent issues of the *Novitates* may be purchased from the Museum. Lists of back issues of the *Novitates* and *Bulletin* published during the last five years are available at World Wide Web site <http://nimidi.amnh.org>. Or address mail orders to: American Museum of Natural History Library, Central Park West at 79th St., New York, NY 10024. TEL: (212) 769-5545. FAX: (212) 769-5009. E-MAIL: scipubs@amnh.org