

PLATE XXXI

Fig. 1. *Bdeogale nigripes* Pucheran. Male adult, Amer. Mus. No. 51581, Akenge, October 8, 1913. Total length of animal, 1015 mm.

Fig. 2. *Bdeogale nigripes* Pucheran. Female subadult, Amer. Mus. No. 51580, Akenge, September 30, 1913. Total length of animal, 820 mm. Photographs from specimens in the flesh.



1



2

PLATE XXXII

Fig. 1. *Crocota crocuta fortis*, new subspecies. Female adult, Amer. Mus. No. 52064, Faradje, February 20, 1912. Total length of animal, 1720 mm.

Fig. 2. *Crocota crocuta fortis*, new subspecies. Male juvenile, Amer. Mus. No. 52062, Faradje, September 12, 1911. Total length of animal, 1398 mm. Photographs from specimens in the flesh.



1



2

PLATE XXXIII

Crocota crocota fortis, new subspecies. Type skull, female adult, Amer. Mus. No. 52068, Faradje, February 5, 1913. Palatal view to show posterior border of palate and auditory bullæ. One-half natural size.

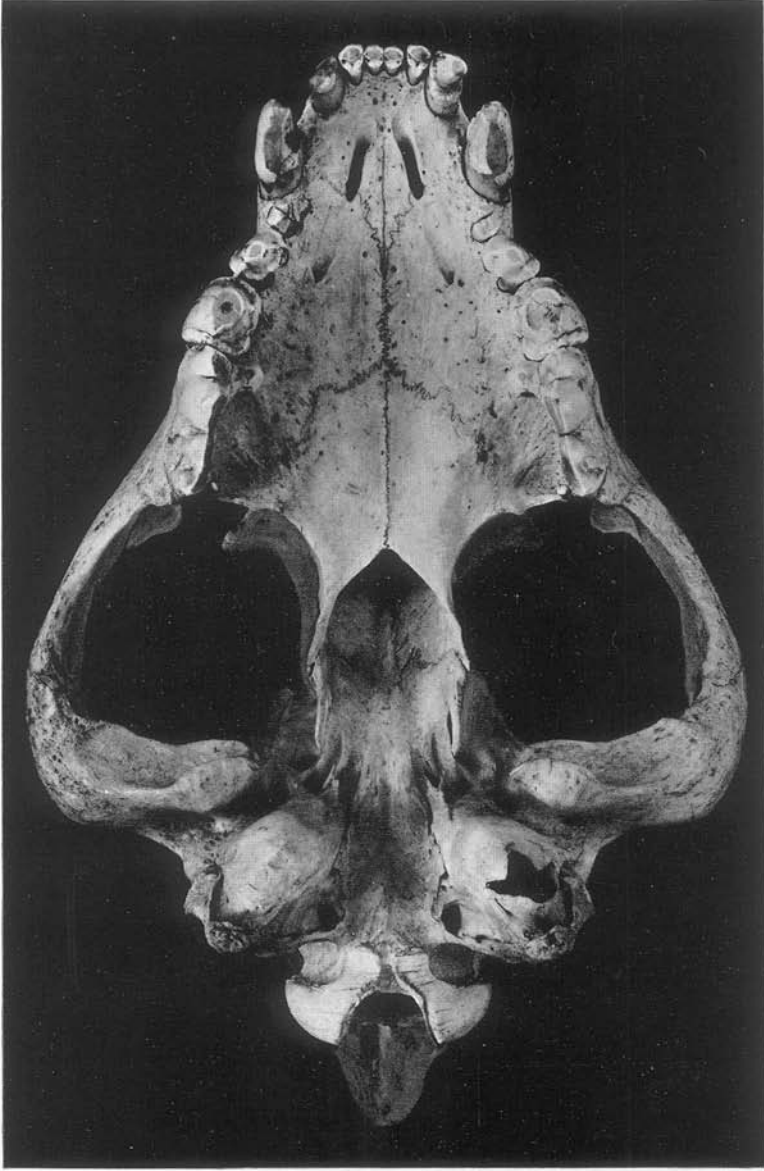
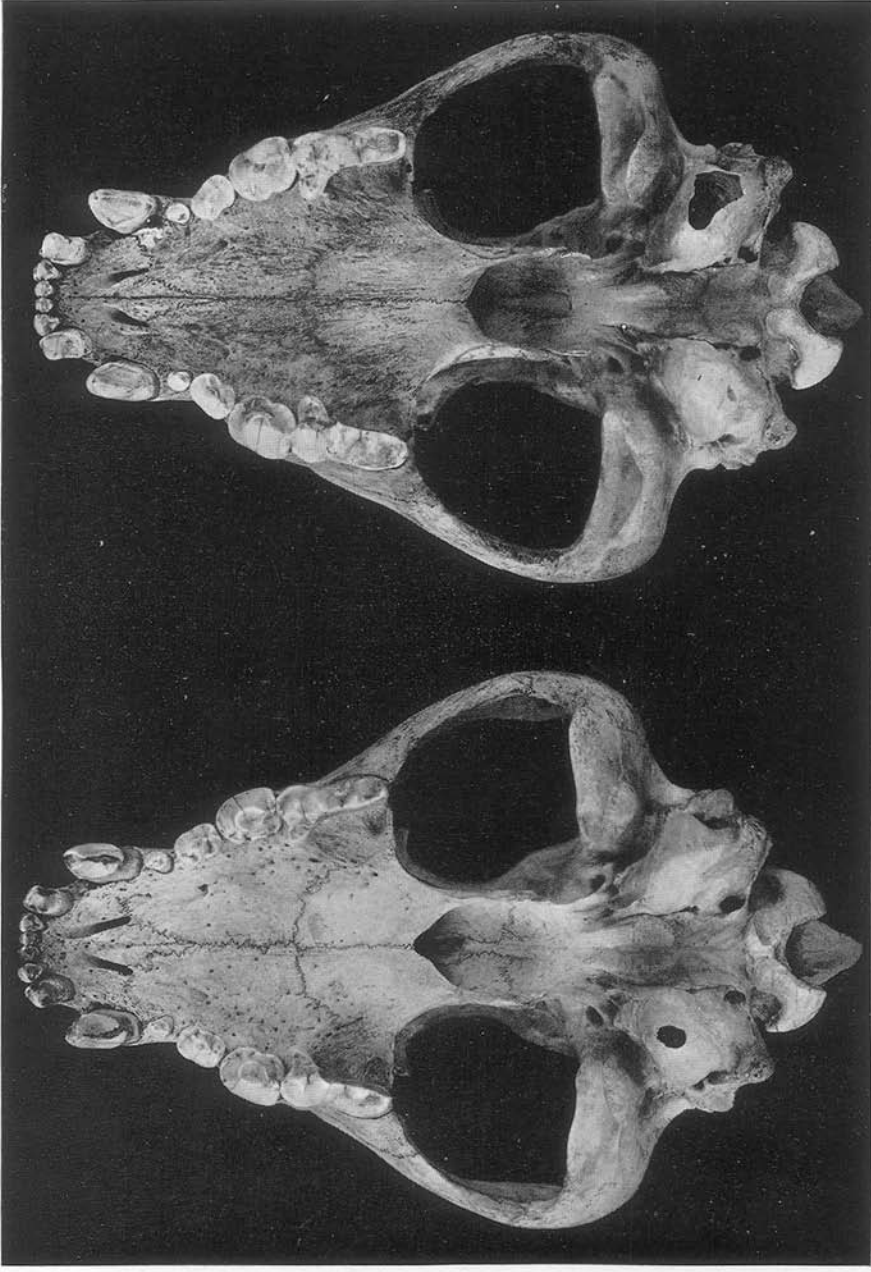


PLATE XXXIV

Showing varying position of second upper premolar in *Crocota crocuta fortis*, new subspecies. About two-fifths natural size.

Fig. 1. Male adult, Amer. Mus. No. 52059, Faradje, August 24, 1911.

Fig. 2. Adult, Amer. Mus. No. 52065, Faradje, February 20, 1912.



1

2

PLATE XXXV

Comparative views of right auditory bulla in *Crocota crocota fortis*, new subspecies, and *C. c. germinans* (Matschie).

Fig. 1. *Crocota c. fortis*. Type. Female adult, Amer. Mus. No. 52068, Faradje, February 5, 1913.

Fig. 2. *Crocota c. germinans*. Female adult, U. S. Nat. Mus. No. 181522, Kabalot Hill, Sotik, British East Africa.

Fig. 3. *Crocota c. fortis*. Adult, Amer. Mus. No. 52065, Faradje, February 20, 1912.

Fig. 4. *Crocota c. germinans*. Amer. Mus. No. 36389, near Lake Naivasha, British East Africa.

1

2



3

4

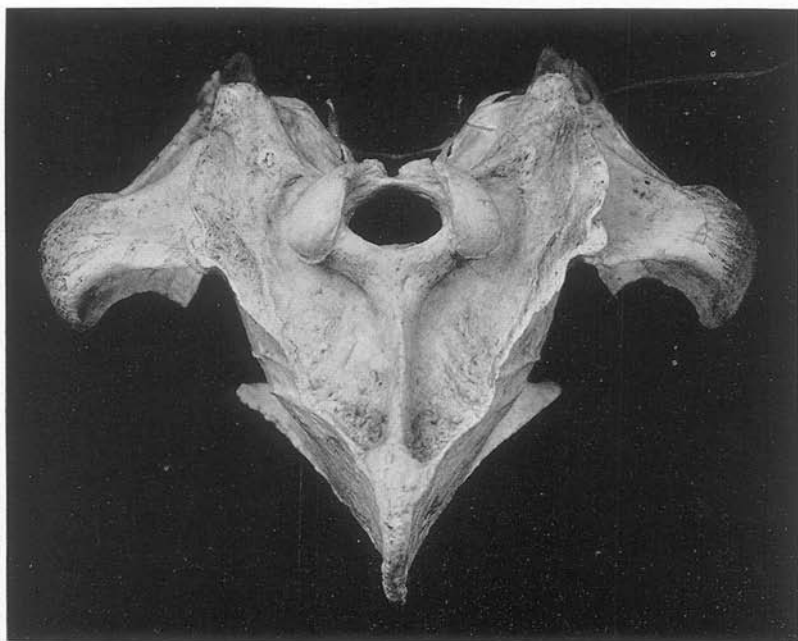
PLATE XXXVI

Comparative views of braincase in *Crocota crocuta fortis*, new subspecies and *C. c. germinans* (Matschie). About one-half natural size.

Fig. 1. *Crocota c. fortis*. Type skull. Female adult, Amer. Mus. No. 52068, Faradje, February 5, 1913.

Fig. 2. *Crocota c. germinans*. Female adult, U. S. Nat. Mus. No. 181522, Kabalot Hill, Sotik, British East Africa.

Both skulls are of old females typically representing series of the two forms.



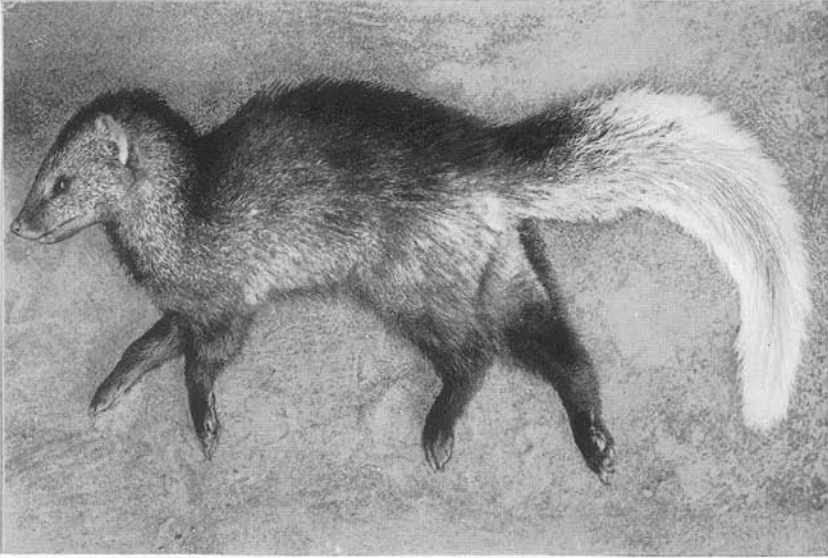
1



2

PLATE XXVI

Figs. 1 and 2. *Ichneumia leucura ibeana* (Thomas). Male subadult, Amer. Mus. No. 51598, Niagara, April 19, 1913. Total length of animal, 720 mm. Photographs from specimen in the flesh.



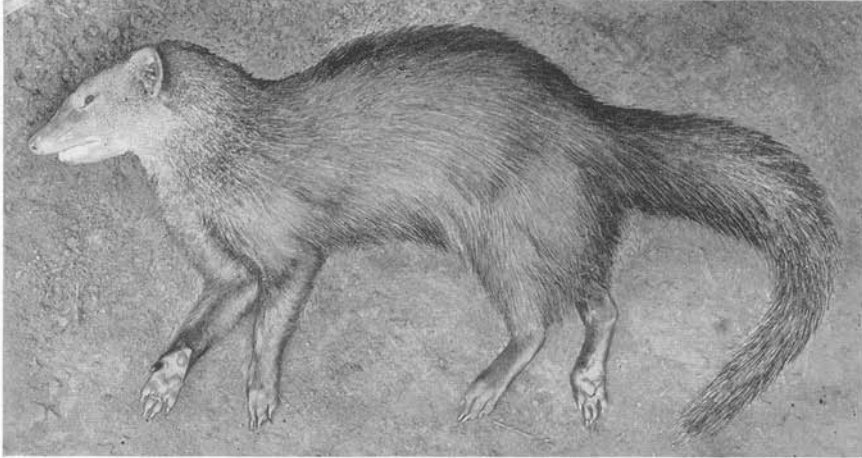
1



2

PLATE XXVII

Figs. 1 and 2. *Xenogale microdon* J. A. Allen. Male adult, Amer. Mus. No. 51616, Akenge, October 14, 1913. Photographs from specimen in the flesh.



1



2

PLATE XXVIII

Fig. 1. *Atilax robustus* Gray. Male adult, Amer. Mus. No. 51612, Faradje, March 8, 1912. Total length of animal, 870 mm.

Fig. 2. *Atilax macrodon*, new species. Male juvenile, Amer. Mus. No. 51615, Medje, October 3, 1910. Total length of animal, 770 mm. Photographs from specimens in the flesh.



1



2

PLATE XXIX

Habitat of *Atilax*. Shore of the Bima River, near Niapu, January 1914.



PLATE XXX

Fig. 1. *Bdeogale nigripes* Pucheran. Male adult, Amer. Mus. No. 51581, Akenge, October 8, 1913. Total length of animal, 1015 mm.

Fig. 2. *Bdeogale nigripes* Pucheran. Female subadult, Amer. Mus. No. 51580, Akenge, September 30, 1913. Total length of animal, 820 mm. Photographs from specimens in the flesh.



1



2

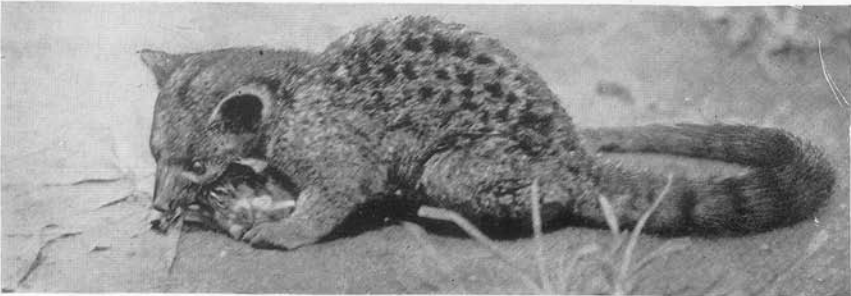
PLATE XXI

Fig. 1. *Nandinia binotata* (Gray). Male adult, Amer. Mus. No. 51497, Niapu, December 1, 1913. Total length of animal, 1370 mm. Photograph from specimen in the flesh.

Fig. 2. *Nandinia binotata* (Gray). Male juvenile. Niangara. Photograph from live animal.



1



2

PLATE XXII

Figs. 1 and 2. *Herpestes ichneumon funestus* (Osgood). Male subadult, Amer. Mus. No. 51593, Medje, June 25, 1914. Total length of animal, 835 mm. Photographs from specimen in the flesh.



1



2

PLATE XXIII

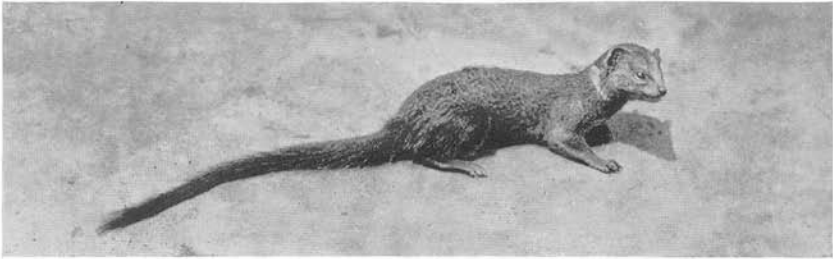
Fig. 1. *Herpestes ichneumon funestus* (Osgood). Male subadult, Amer. Mus. No. 51593, Medje, June 25, 1914. Total length of animal, 835 mm. Photograph from specimen in the flesh.

Figs. 2 and 3. *Galerella ochracea ochracea* (Gray). Male adult, Amer. Mus. No. 51109, Faradje, August 19, 1912. Total length of animal, 495 mm. Photographs from live animal.

Fig. 4. *Galerella ochracea ochracea* (Gray). Male adult, Amer. Mus. No. 51184, Faradje, February 28, 1912. Total length of animal, 532 mm. Photograph from specimen in the flesh.



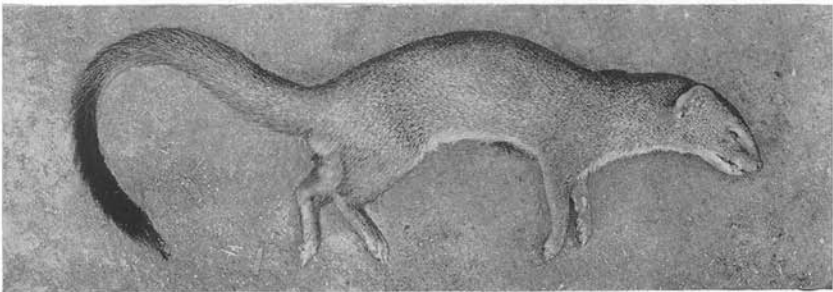
1



2



3



4

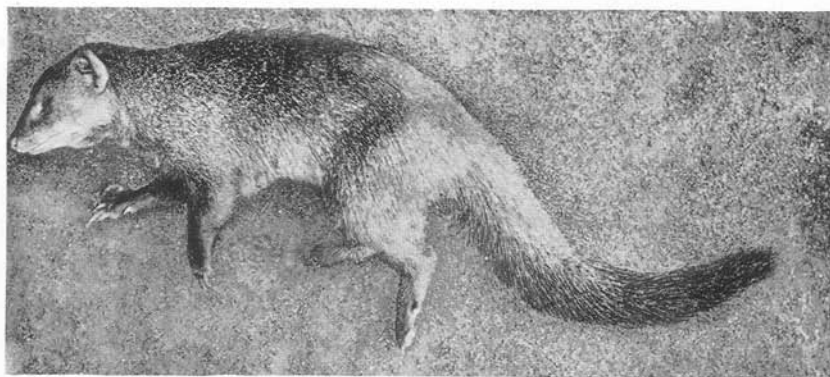
PLATE XXIV

Fig. 1. *Helogale hirtula robusta*, new subspecies. Female adult, Amer. Mus. No. 51608, Niangara, April 20, 1913. Total length of animal, 490 mm. Photograph from specimen in the flesh.

Fig. 2. *Mungos gothneh* (Heuglin and Fitzinger). Female juvenile, Amer. Mus. No. 51128, Faradje, May 8, 1911. Total length of animal, 372 mm. Photograph from live animal.

Fig. 3. *Mungos gothneh* (Heuglin and Fitzinger). Poko, July 1913. Photograph from live animal.

Fig. 4. *Mungos gothneh* (Heuglin and Fitzinger). Female adult, Amer. Mus. No. 51127, Faradje, March 17, 1911. Total length of animal, 490 mm. Photograph from specimen in the flesh.



1



2



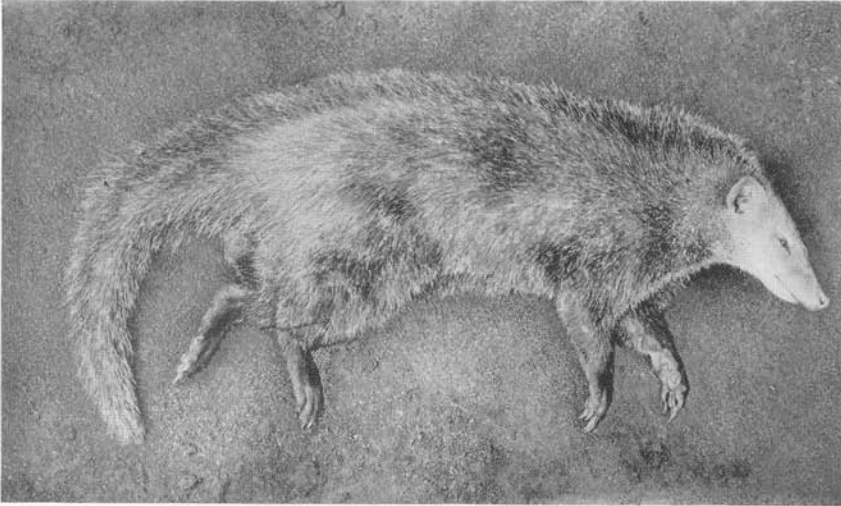
3



4

PLATE XXV

Figs. 1 and 2. *Crossarchus alexandri* Thomas and Wroughton. Male adult, Amer. Mus. No. 51645, Akenge, September 16, 1913 Total length of animal, 680 mm. Photographs from specimen in the flesh.



1



2

PLATE XLVII

Panthera pardus chui (Heller). Male adult, Amer. Mus. No. 52023, Faradje, February 17, 1913. Total length of animal, 2030 mm.

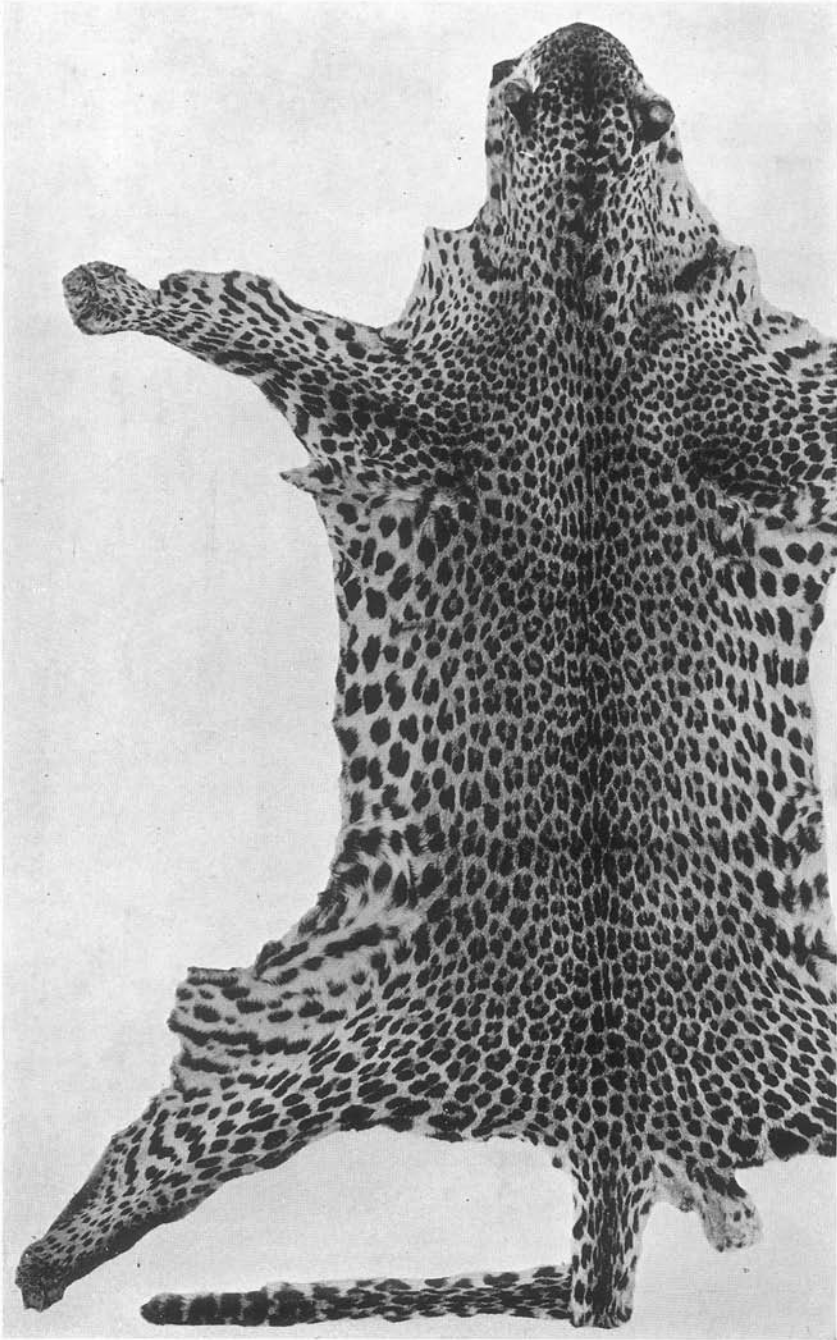


PLATE XLVIII

Panthera pardus chui (Heller). Female adult, Amer. Mus. No. 52005, Faradje,
March 26, 1911. Total length of animal, 1819 mm.

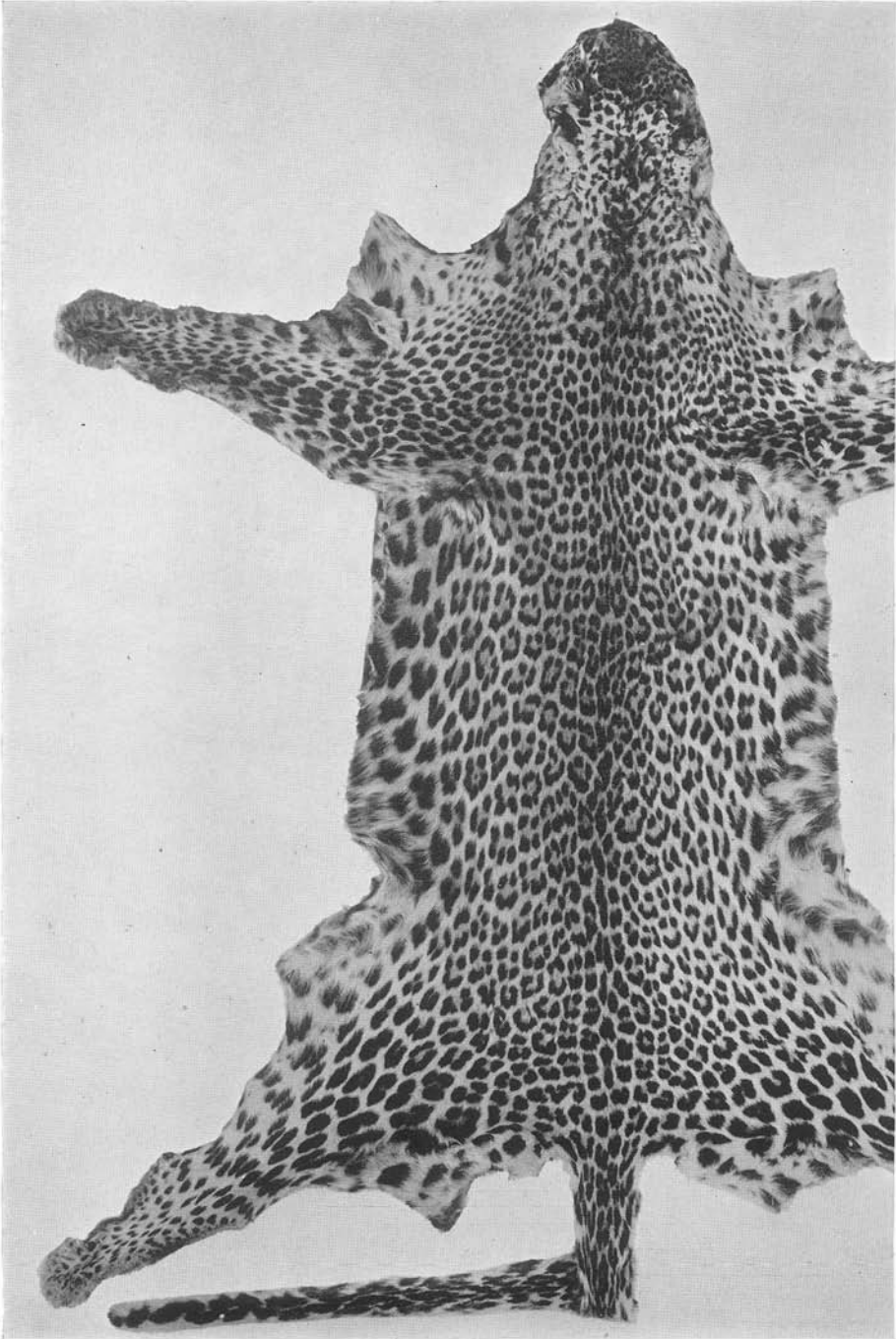


PLATE XLIX

Panthera pardus chui (Heller). Amer. Mus. No. 52002, Faradje, March 1, 1911.

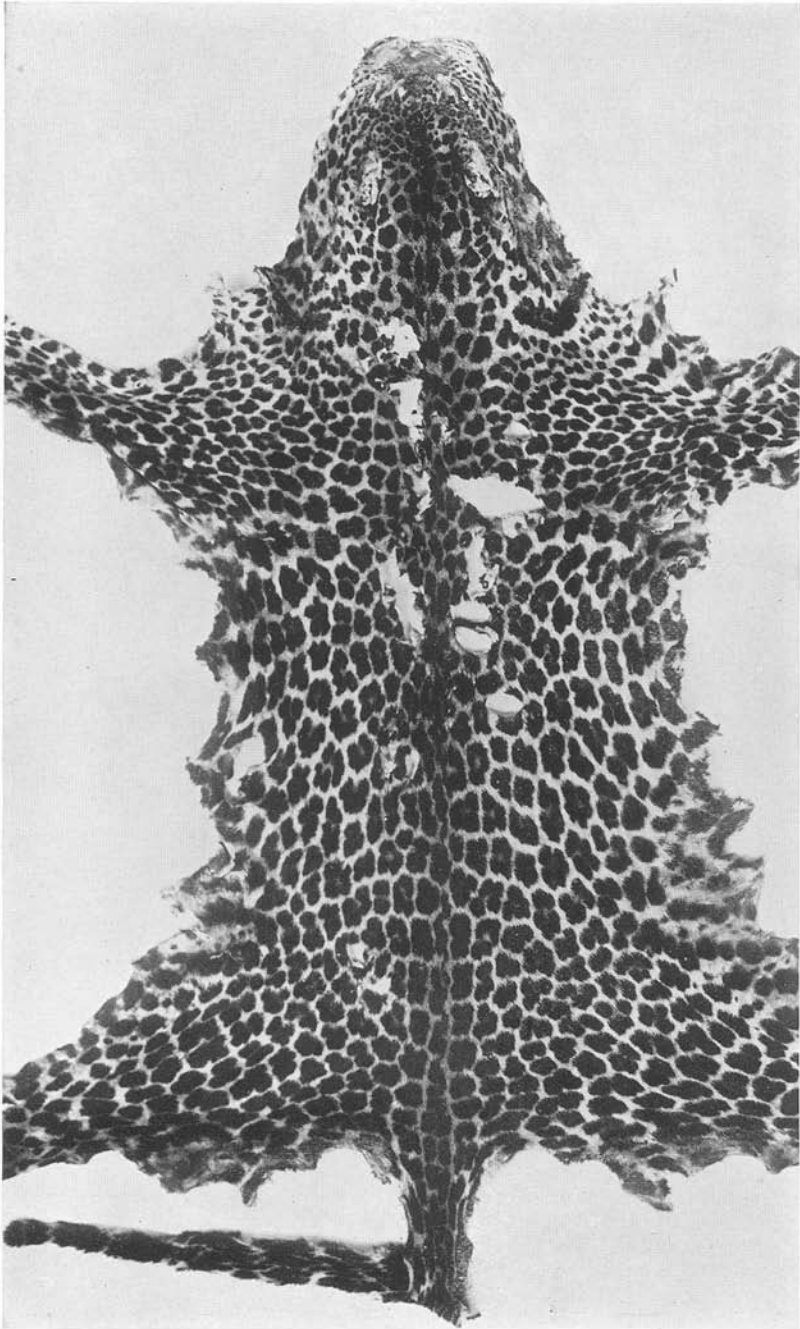


PLATE L

Panthera pardus chui (Heller). Amer. Mus. No. 52003, Faradje, March 1, 1911.

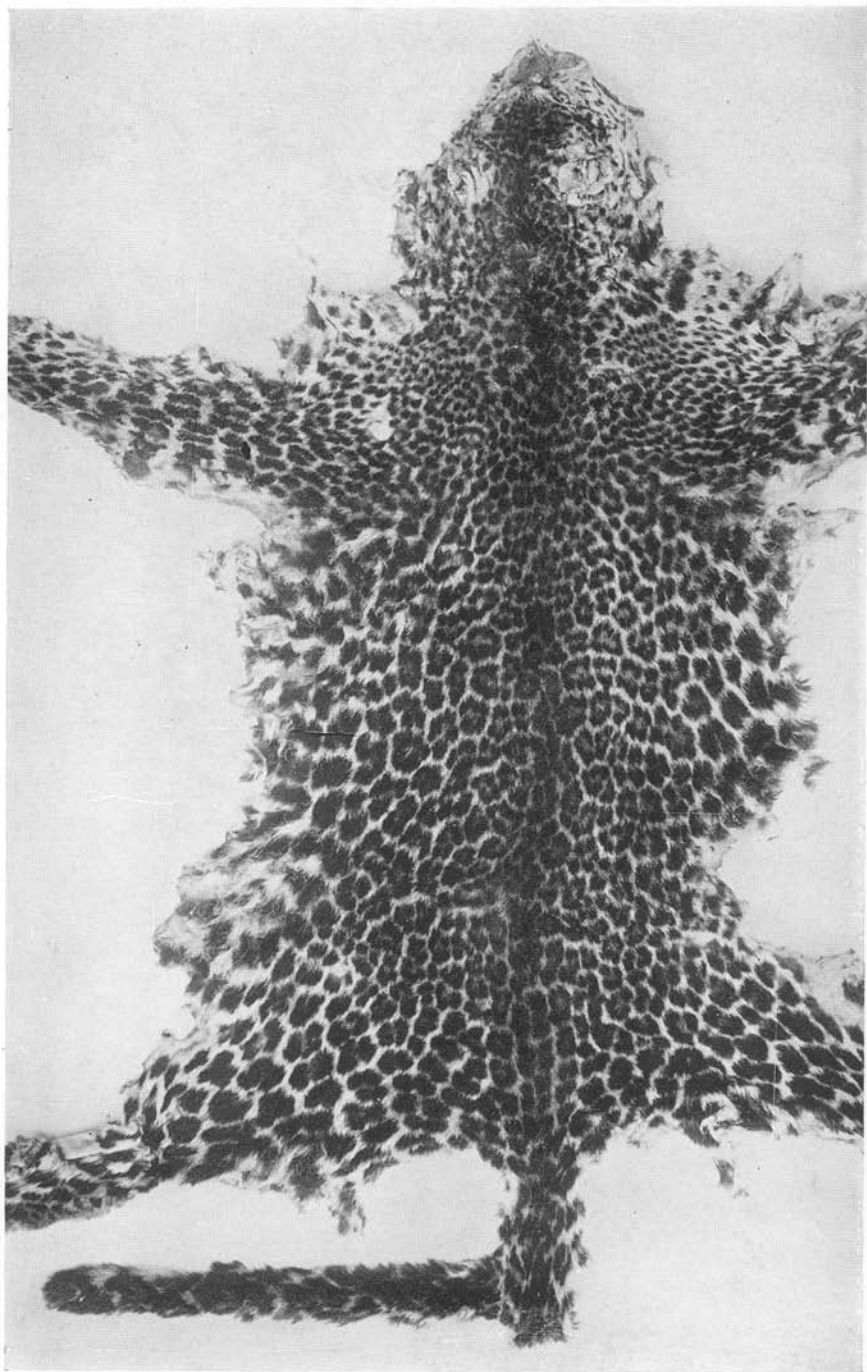


PLATE LI

Panthera pardus chui (Heller). Amer. Mus. No. 52014, Faradje, June 9, 1911.

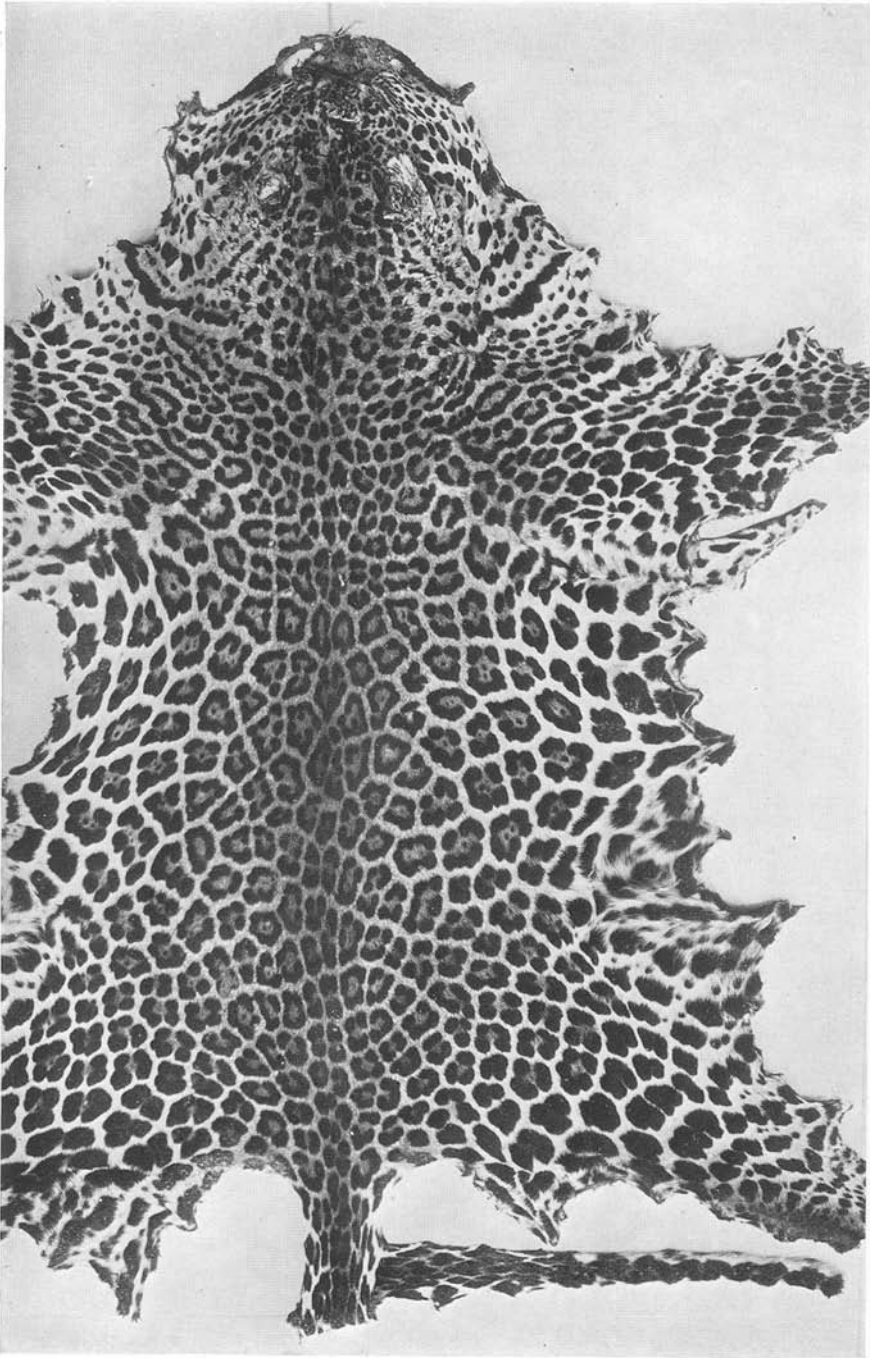


PLATE XVI

Genetta victoriae Thomas. Male adult, Amer. Mus. No. 51409, Akenge, September 29, 1913. Total length of animal, 975 mm. Photograph from specimen in the flesh.



PLATE XVII

Fig. 1. *Genetta victoriae* Thomas. Male adult, Amer. Mus. No. 51409, Akenge, September 29, 1913. Total length of animal, 975 mm.

Fig. 2. *Poiana richardsoni ochracea* Thomas and Wroughton. Male subadult, Amer. Mus. No. 51439, Akenge, October 25, 1913. Total length of animal, 695 mm. Photographs from specimens in the flesh.



1



2

PLATE XVIII

Osbornictis piscivora J. A. Allen. Type, male adult. Drawn by Richard Deckert from a skin, Amer. Mus. No. 51514, Niapu, December 1, 1913. Total length of animal, 910 mm.

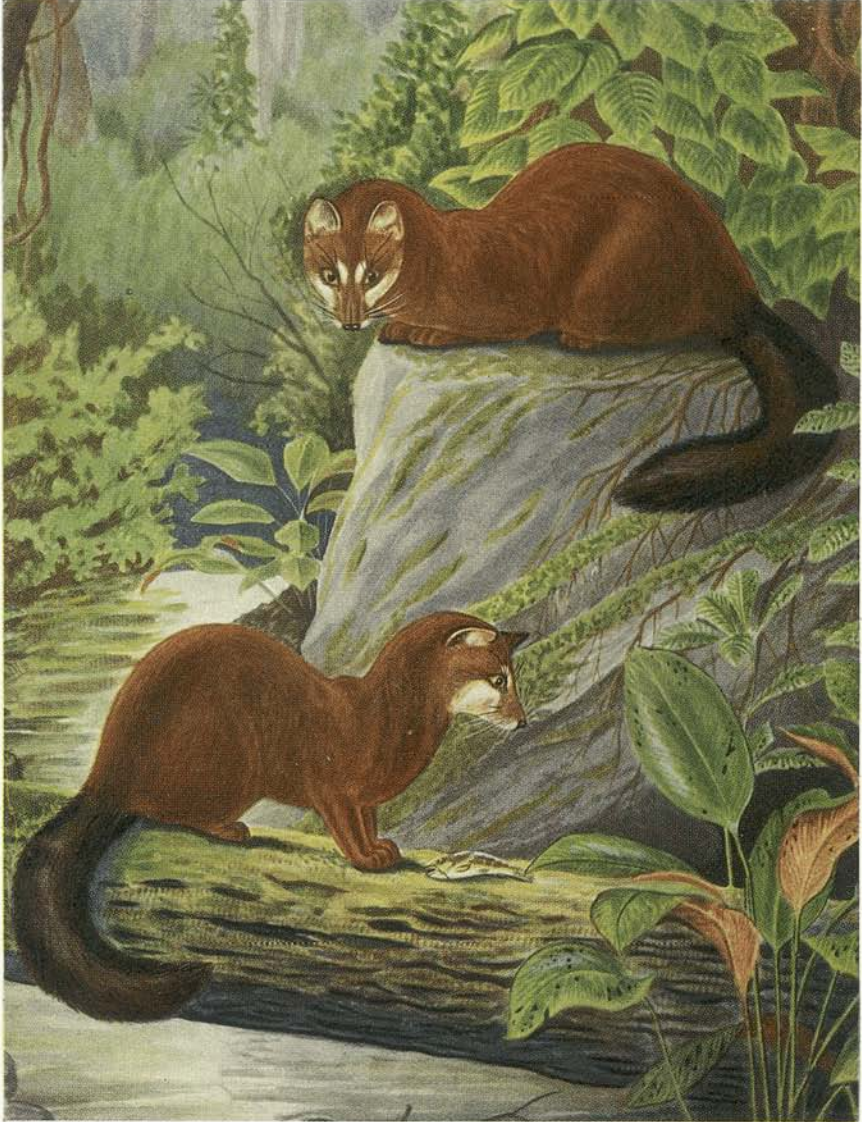


PLATE XIX

Habitat of *Osbornictis piscivora* J. A. Allen. One of the larger forest brooks at the height of the rainy season. Niapu, January 8, 1914. This represents the actual place where the type specimen was taken.

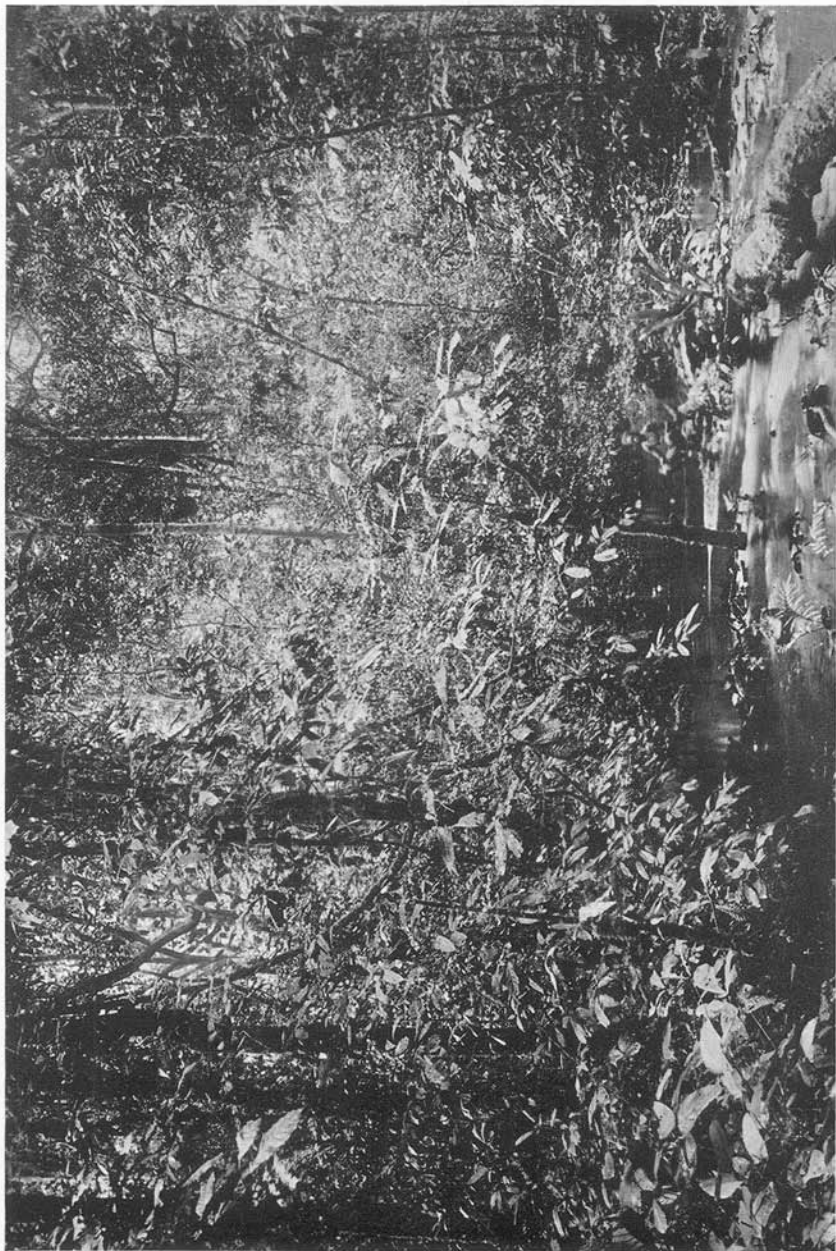
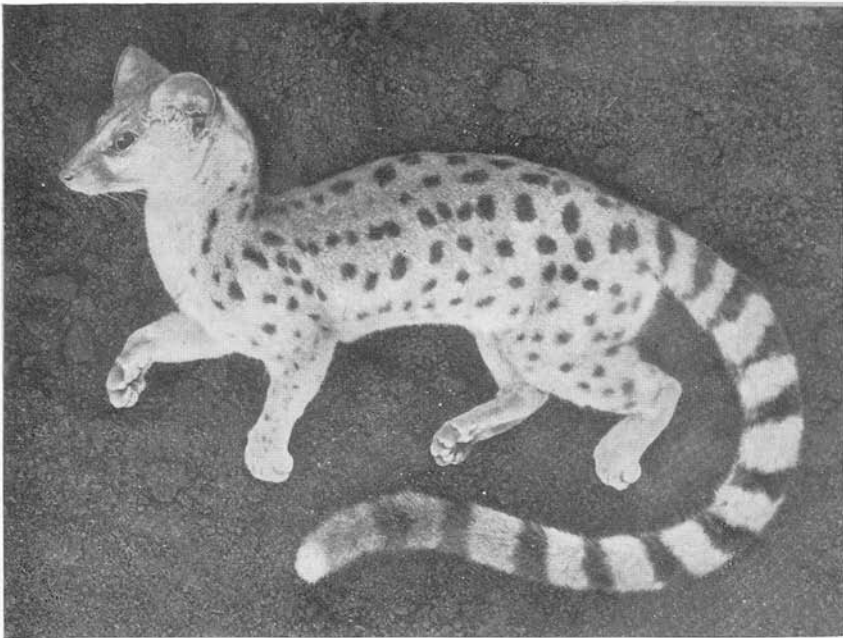


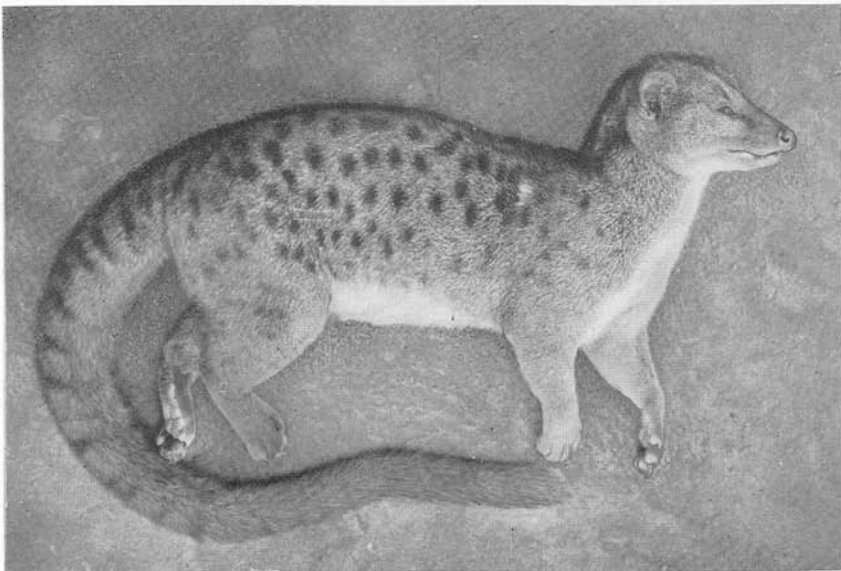
PLATE XX

Fig. 1. *Poiana richardsoni ochracea* Thomas and Wroughton. Male subadult, Amer. Mus. No. 51439, Akenge, October 25, 1913. Total length of animal, 695 mm.

Fig. 2. *Nandinia binotata* (Gray). Female adult, Amer. Mus. No. 51513, Niapu, January 22, 1914. Total length of animal, 1050 mm. Photographs from specimens in the flesh.



1



2

PLATE XLII

Panthera pardus suahelica (Neumann). Amer. Mus. No. 36428, British East Africa. Paul J. Rainey Collection.

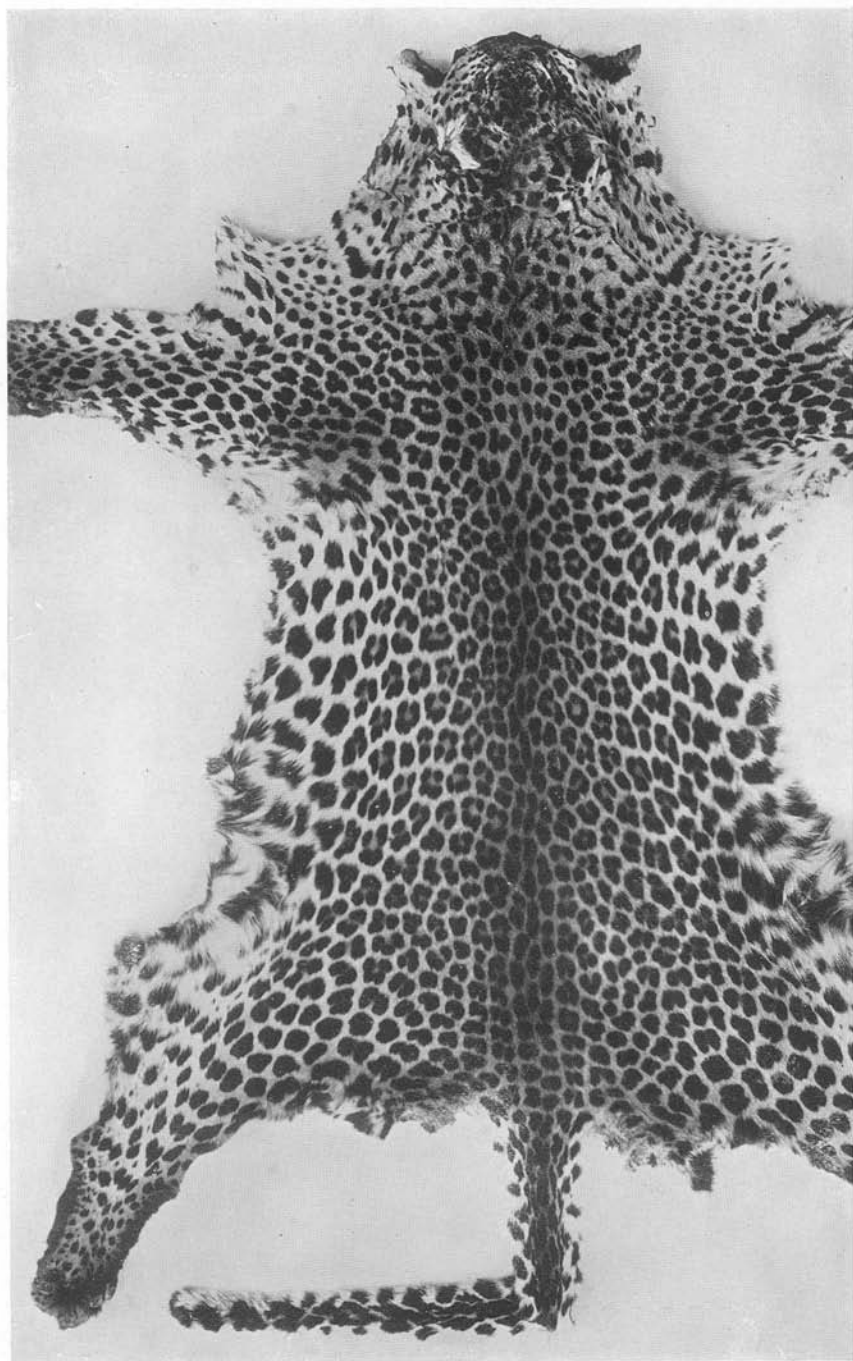


PLATE XLIII

Panthera pardus suahelica (Neumann). Amer. Mus. No. 36429, British East Africa. Paul J. Rainey Collection.

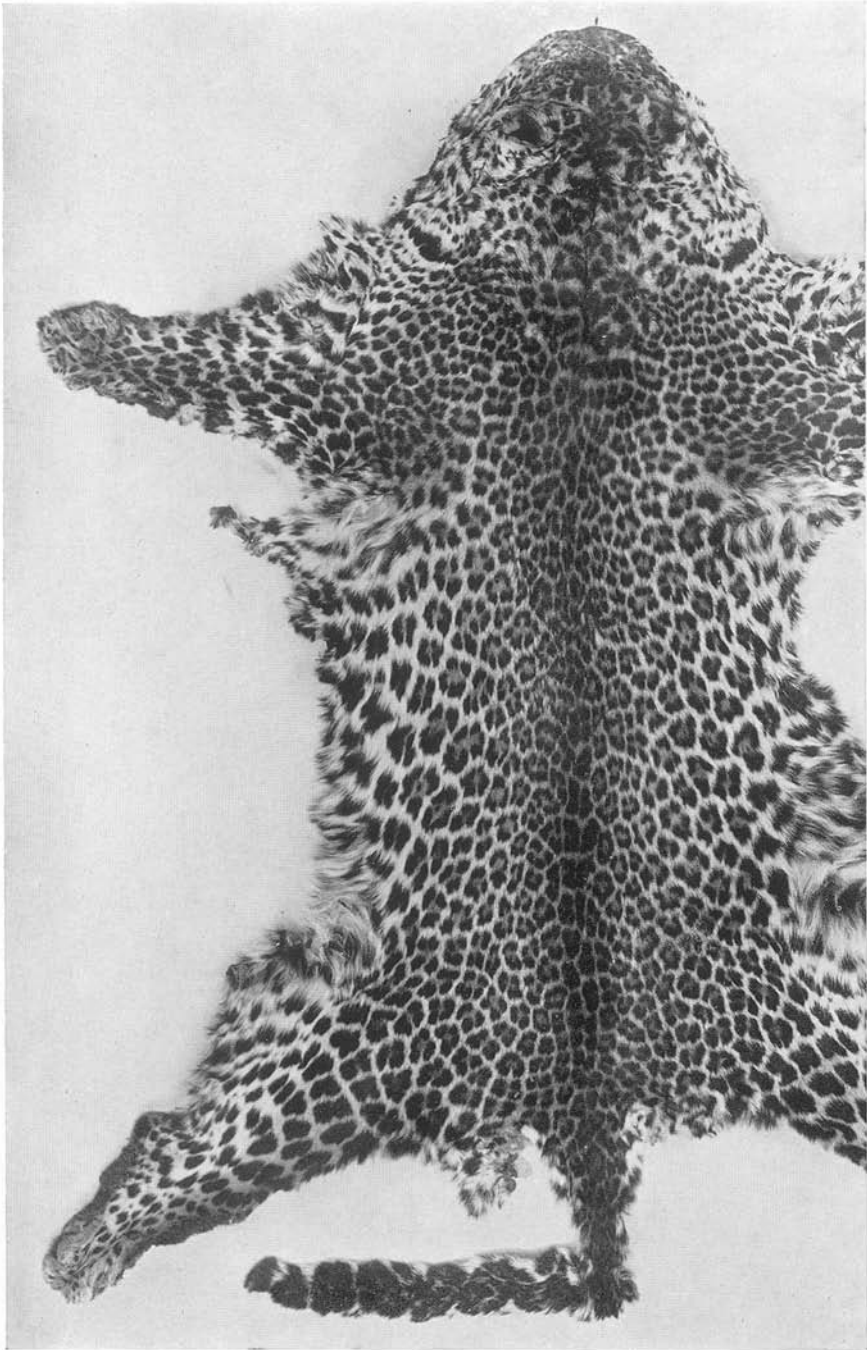


PLATE XLIV

Panthera pardus chui (Heller). Male adult, Amer. Mus. No. 52006, Faradje,
March 28, 1911. Total length of animal, 2120 mm.



PLATE XLV

Panthera pardus chui (Heller). Male adult, Amer. Mus. No. 52012, Faradje, May 27, 1911. Total length of animal, 2090 mm.

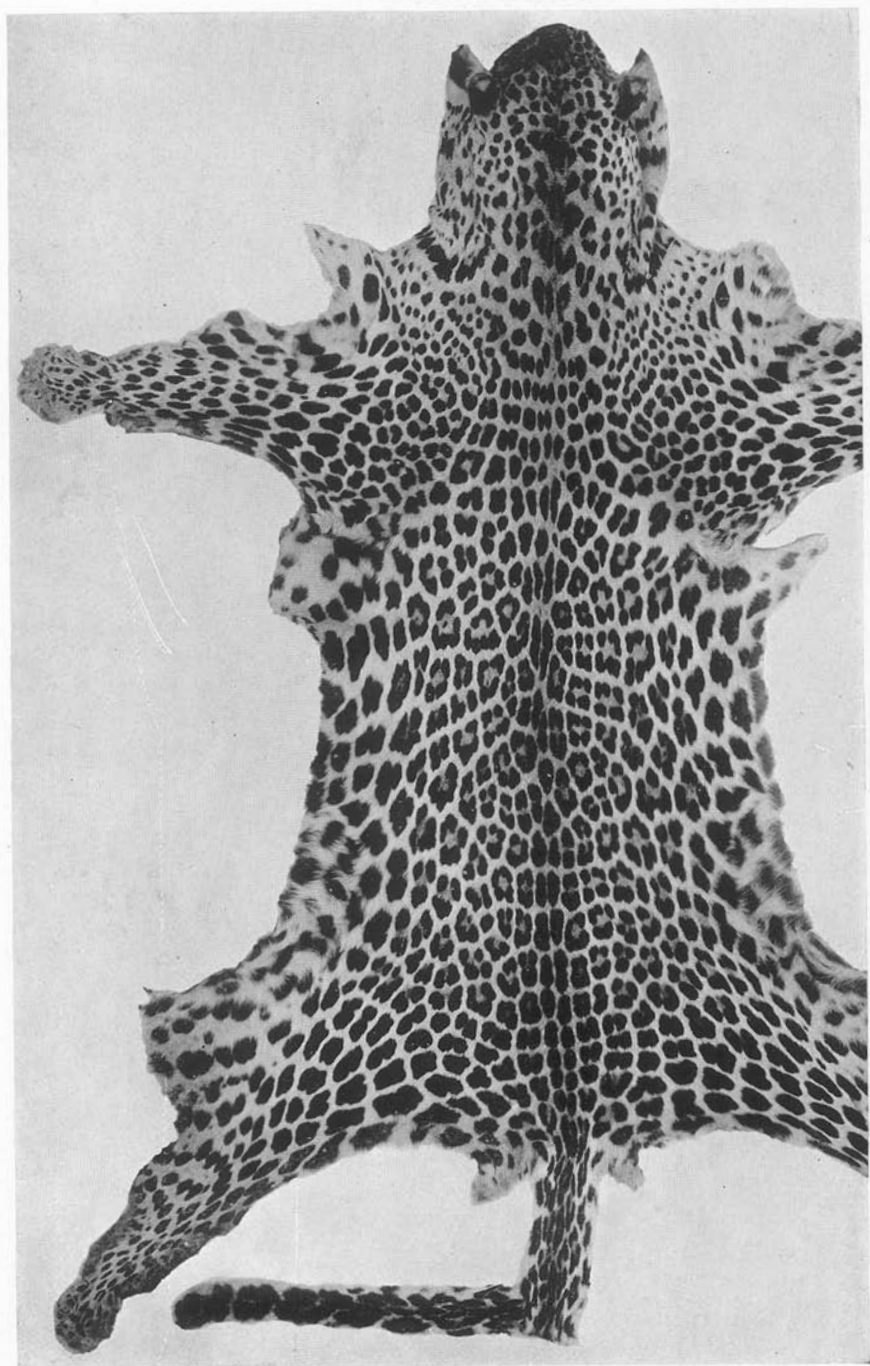


PLATE XLVI

Panthera pardus chui (Heller). Male adult, Amer. Mus. No. 52019, Faradje, August 8, 1912. Total length of animal, 1810 mm.

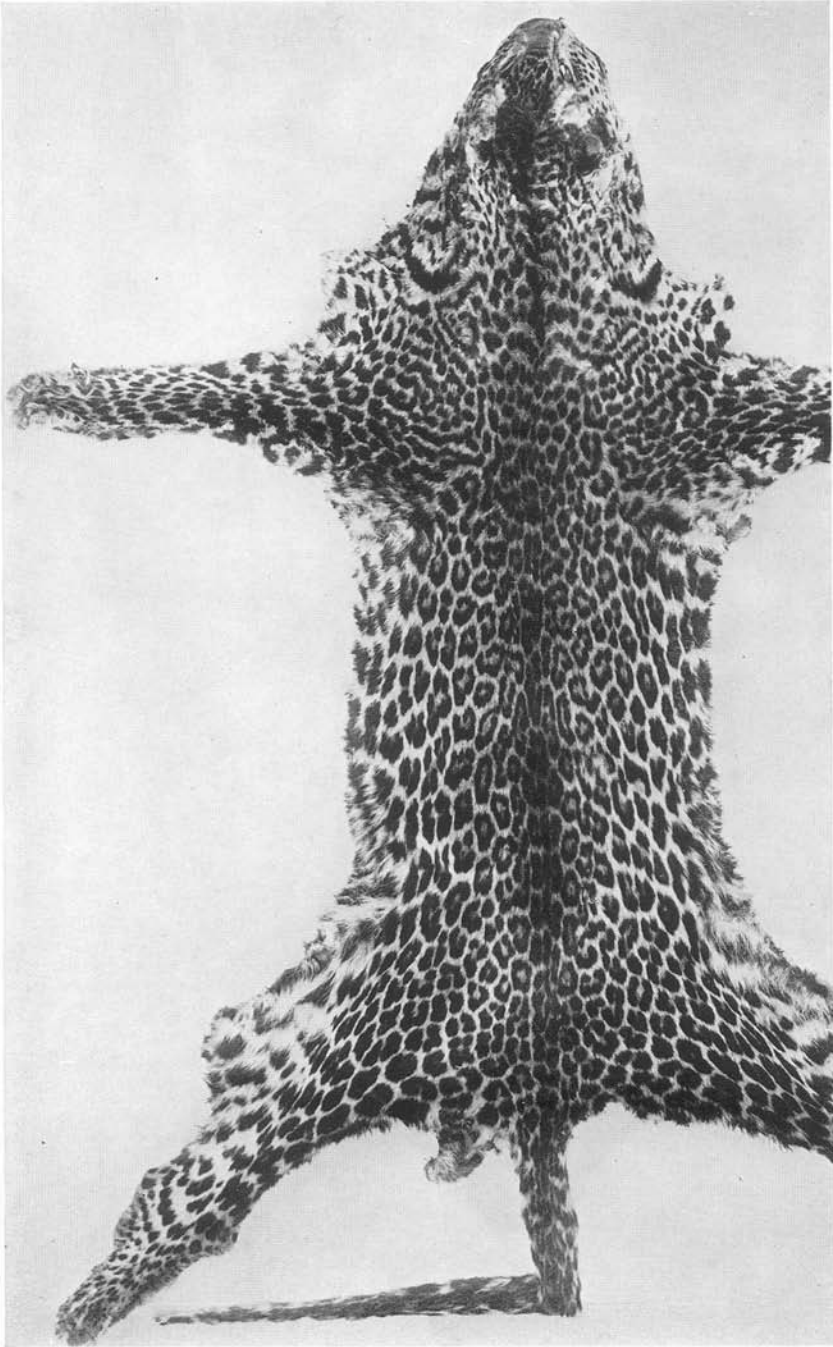


PLATE XI

Habitat of *Lutra maculicollis* Lichtenstein and *Aonyx capensis* (Schinz). Bima River, near Niapu, January 1914.

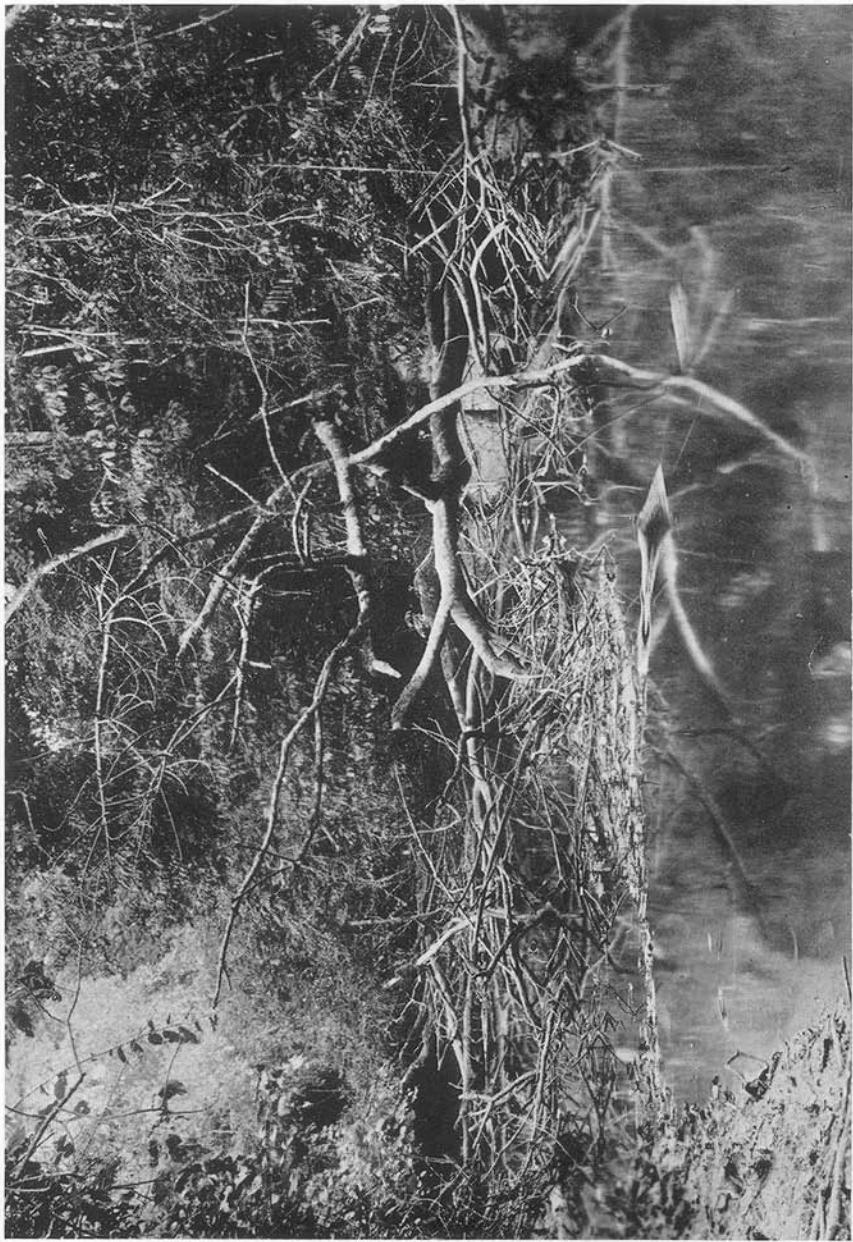


PLATE XII

Civettictis civetta orientalis (Matschie). Male adult, Amer. Mus. No. 51811, Niapu, December 26, 1913. Total length of animal, 1350 mm. Photograph from specimen in the flesh.

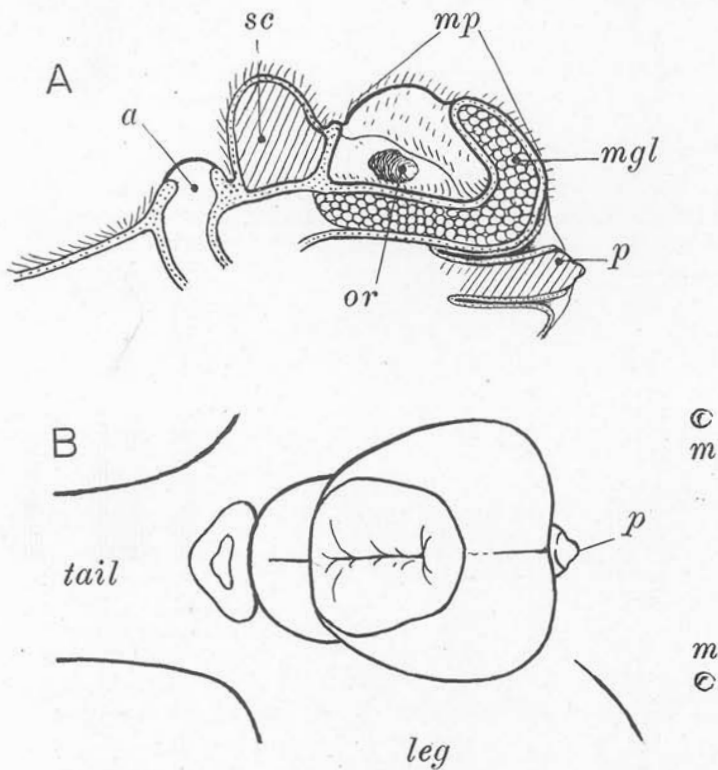


PLATE XIII

Fig. 1. *Civettictis civetta orientalis* (Matschie). Upper, melanistic specimen, female juvenile, Amer. Mus. No. 51819, Medje, August 25, 1910. Total length of animal, 500 mm. Lower, normally colored specimen, female juvenile, Amer. Mus. No. 51792, Medje, August 25, 1910. Total length of animal, 535 mm. Taken from same litter.

Fig. 2. *Civettictis civetta orientalis* (Matschie). Male adult, Amer. Mus. No. 51797, Akenge, October 4, 1913. Total length of animal, 1350 mm. Inferior view of genitalia, musk pouch and anus. Photographs from specimens in the flesh.

The diagrams below explain Fig. 2, showing genitalia, musk pouch and anus. A, longitudinal section; B, inferior view, outline from photograph. *a*, anal pouch leading to anus; *m*, rudimentary mammary of male; *mgl*, musk glands; *mp*, musk pouch; *or*, principal orifice of musk gland; *p*, penis; *sc*, scrotum.





1

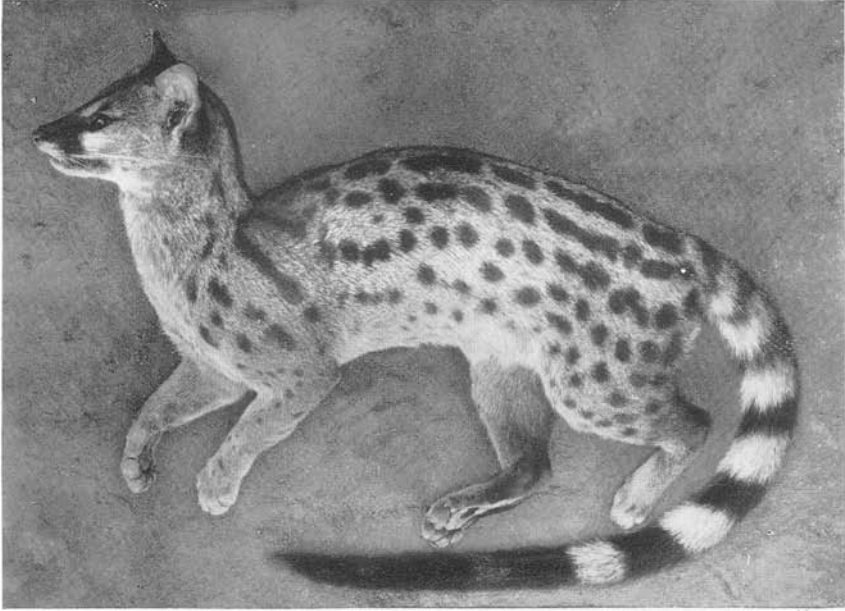


2

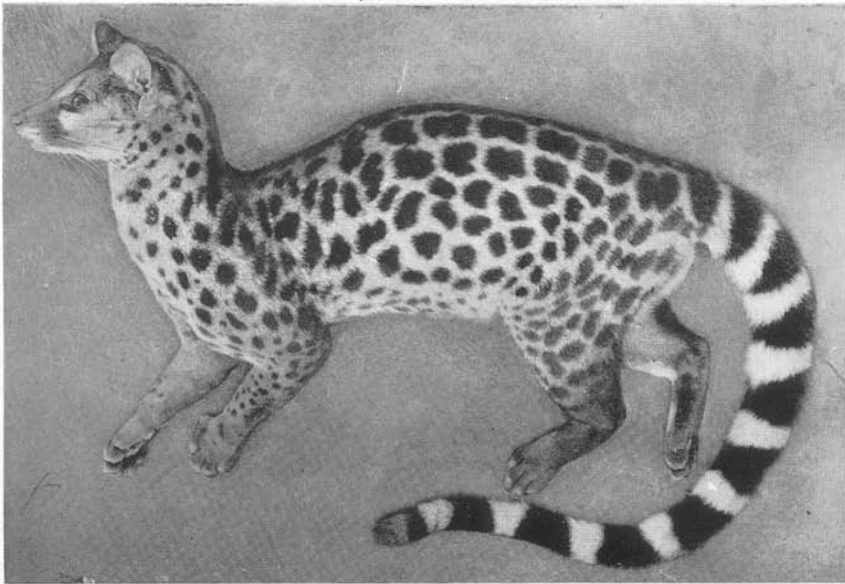
PLATE XIV

Fig. 1. *Genetta pardina fieldiana* Du Chaillu. Male adult, Amer. Mus. No. 51541, Niapu, January 9, 1914. Total length of animal, 945 mm.

Fig. 2. *Genetta servalina* Pucheran. Female adult, Amer. Mus. No. 51577, Niapu, January 19, 1914. Total length of animal, 950 mm. Photographs from specimens in the flesh.



1

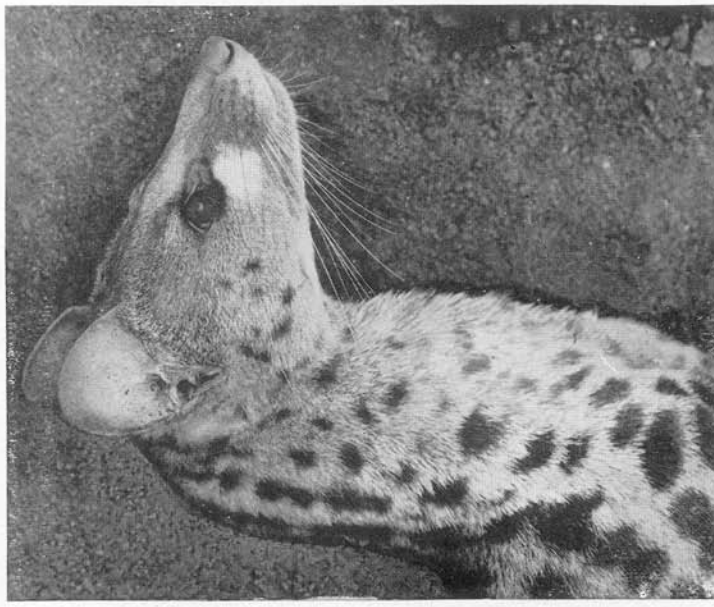


2

PLATE XV

Fig. 1. *Genetta servalina* Pucheran. Male adult, Amer. Mus. No. 51559, Niapu, November 28, 1913. Total length of animal, 1035 mm.

Fig. 2. *Genetta pardina fieldiana* Du Chaillu. Male adult, Amer. Mus. No. 51541, Niapu, January 9, 1914. Total length of animal, 945 mm. Photographs from specimens in the flesh.

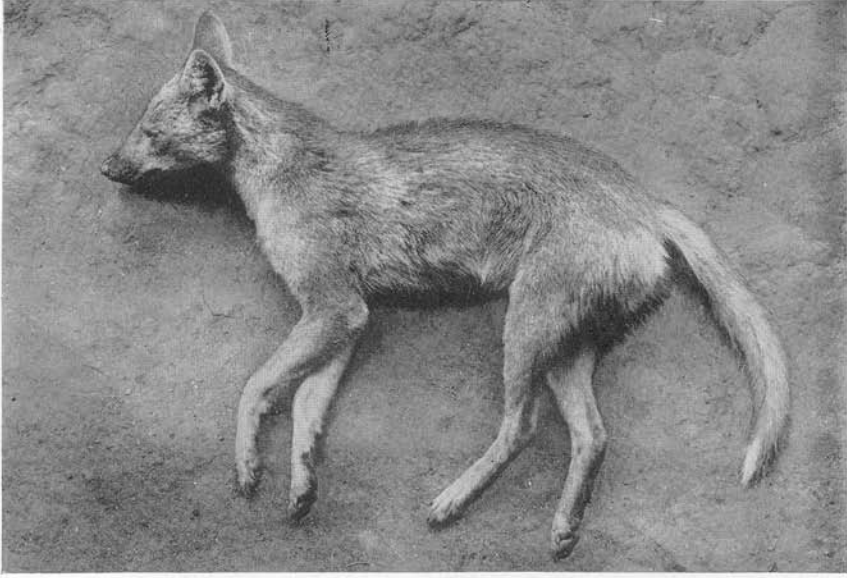


PLATES VI to LXXVIII

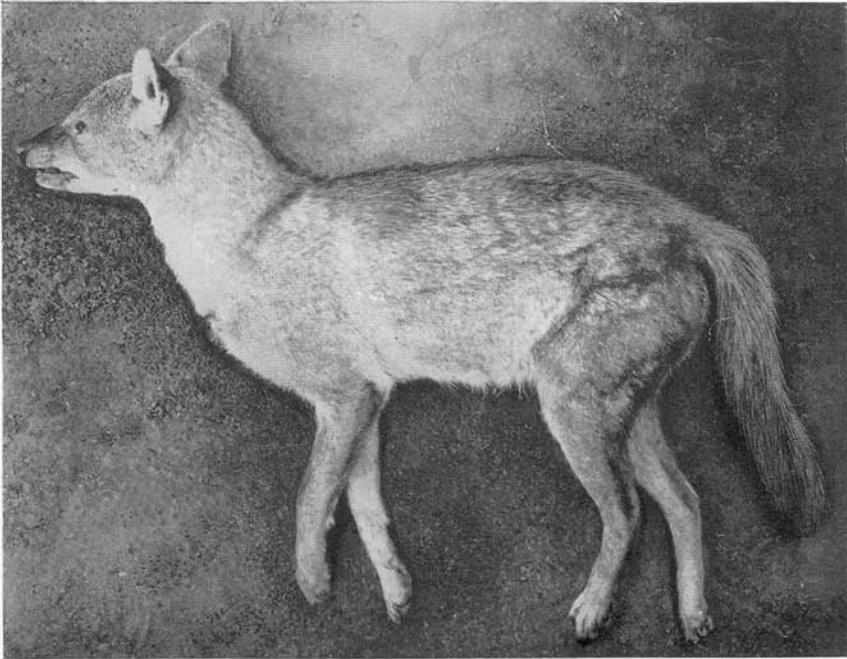
PLATE VI

Fig. 1. *Thos anthus soudanicus* (Thomas). Male adult, Amer. Mus. No. 52049, Faradje, February 25, 1912. Total length of animal, 970 mm.

Fig. 2. *Thos anthus soudanicus* (Thomas). Female adult, Amer. Mus. No. 52052, Faradje, December 5, 1912. Total length of animal, 930 mm. Photographs from specimens in the flesh.



1

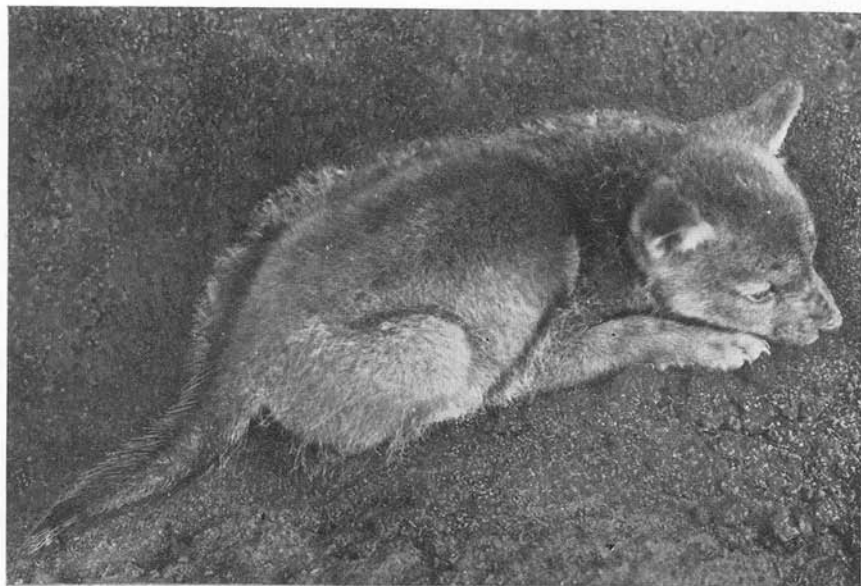


2

PLATE VII

Fig. 1. *Thos anthus soudanicus* (Thomas). Male juvenile, Amer. Mus. No. 52053, Niangara, November 16, 1910. Total length of animal, 399 mm. Photograph from live animal.

Fig. 2. *Mellivora capensis cottoni* Lydekker. Female adult, Amer. Mus. No. 51951, Niapu, December 9, 1913. Total length of animal, 870 mm. Photograph from specimen in the flesh.



1

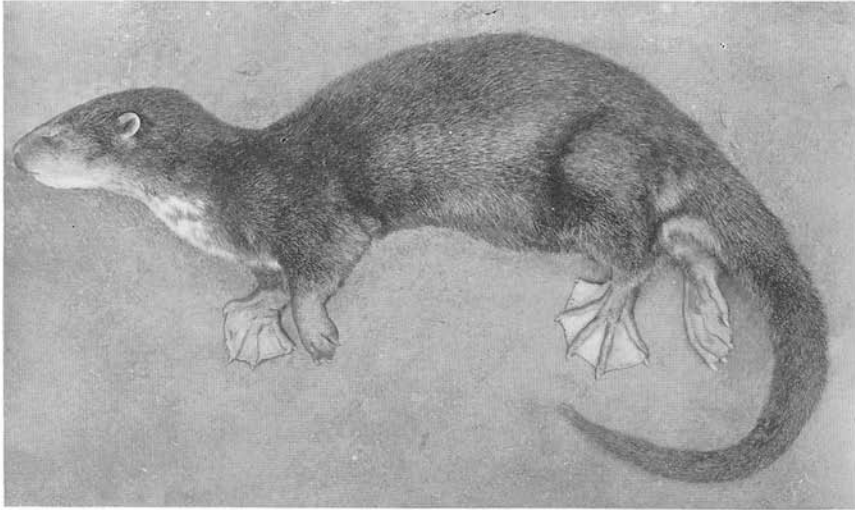


2

PLATE VIII

Fig. 1. *Lutra maculicollis* Lichtenstein. Female adult, Amer. Mus. No. 51825, Faradje, January 7, 1913. Total length of animal, 960 mm.

Fig. 2. *Lutra maculicollis* Lichtenstein. Male juvenile, Amer. Mus. No. 51822, Faradje, February 28, 1911. Total length of animal, 460 mm. Photographs from specimens in the flesh.



1



2

PLATE IX

Fig. 1. *Micraonyx cinerea* (Illiger). Amer. Mus. No. 29731, Iwahig, Palawan, Philippine Islands.

Fig. 2. *Aonyx capensis* (Schinz). Female adult, Amer. Mus. No. 51849, Faradje, February 2, 1913. Total length of animal, 950 mm.

Fig. 3. *Aonyx capensis* (Schinz). Male adult, Amer. Mus. No. 51847, Faradje, January 22, 1910. Total length of animal, 1090 mm. Photographs from stuffed skins.

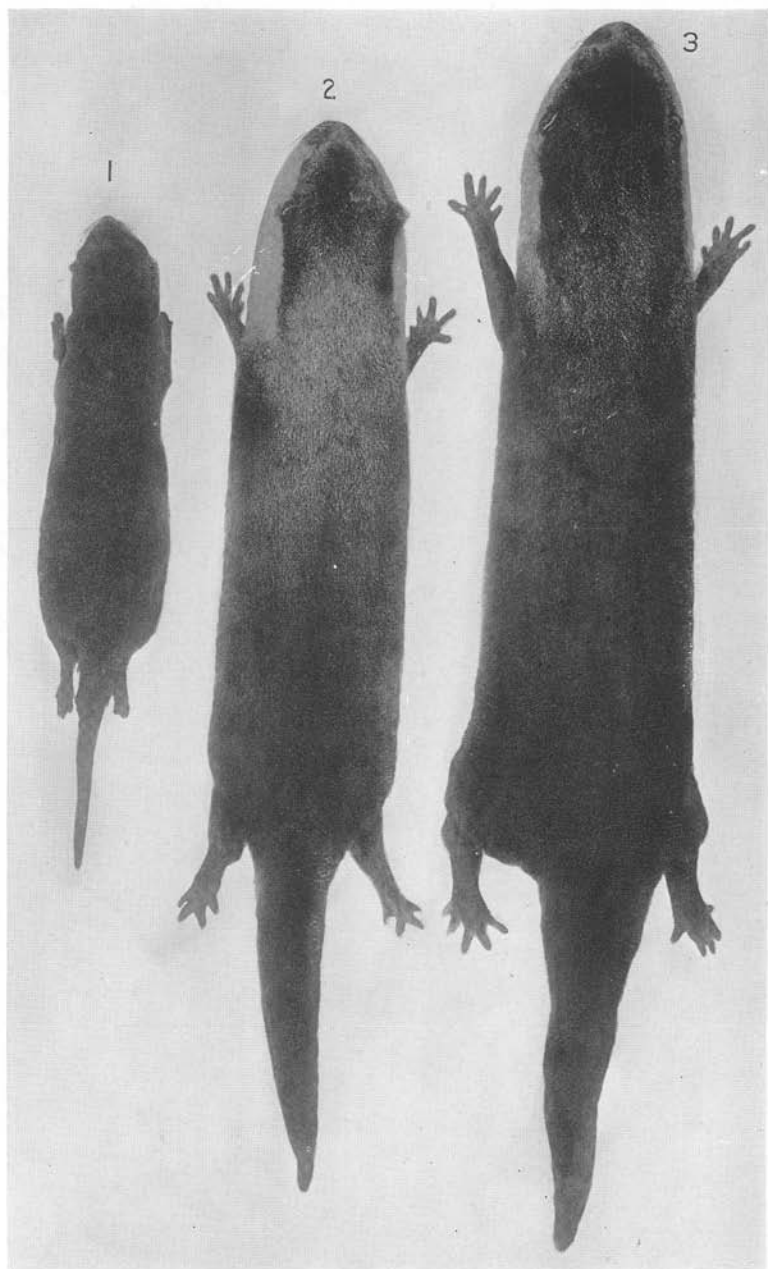


PLATE X

Fig. 1. *Aonyx capensis* (Schinz). Male adult, Amer. Mus. No. 51847, Faradje, January 22, 1910. Total length of animal, 1090 mm. Photograph from specimen in the flesh.

Figs. 2 and 3. *Aonyx capensis* (Schinz). Male juvenile, Amer. Mus. No. 51839, Faradje, March 16, 1911. Total length of animal, 665 mm. Photograph from live animal.



1



2



3

PLATE LXXII

Leptailurus ogilbyi pantasticta (Pocock). Female adult, Amer. Mus. No. 51989,
Faradje, October 29, 1912.

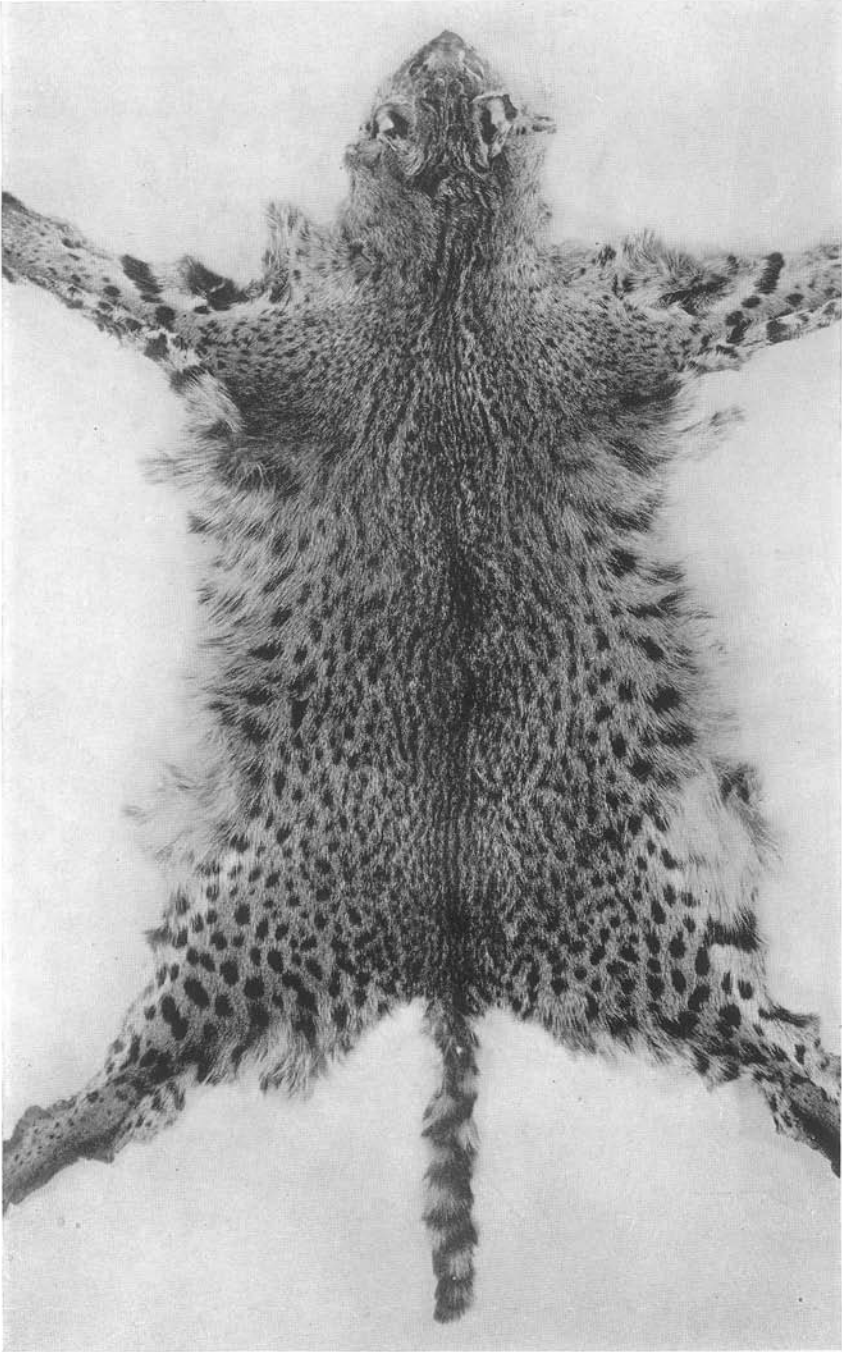


PLATE LXXIII

Leptailurus ogilbyi pantasticta (Pocock). Female adult, Amer. Mus. No. 51984,
Faradje, June 6, 1911.

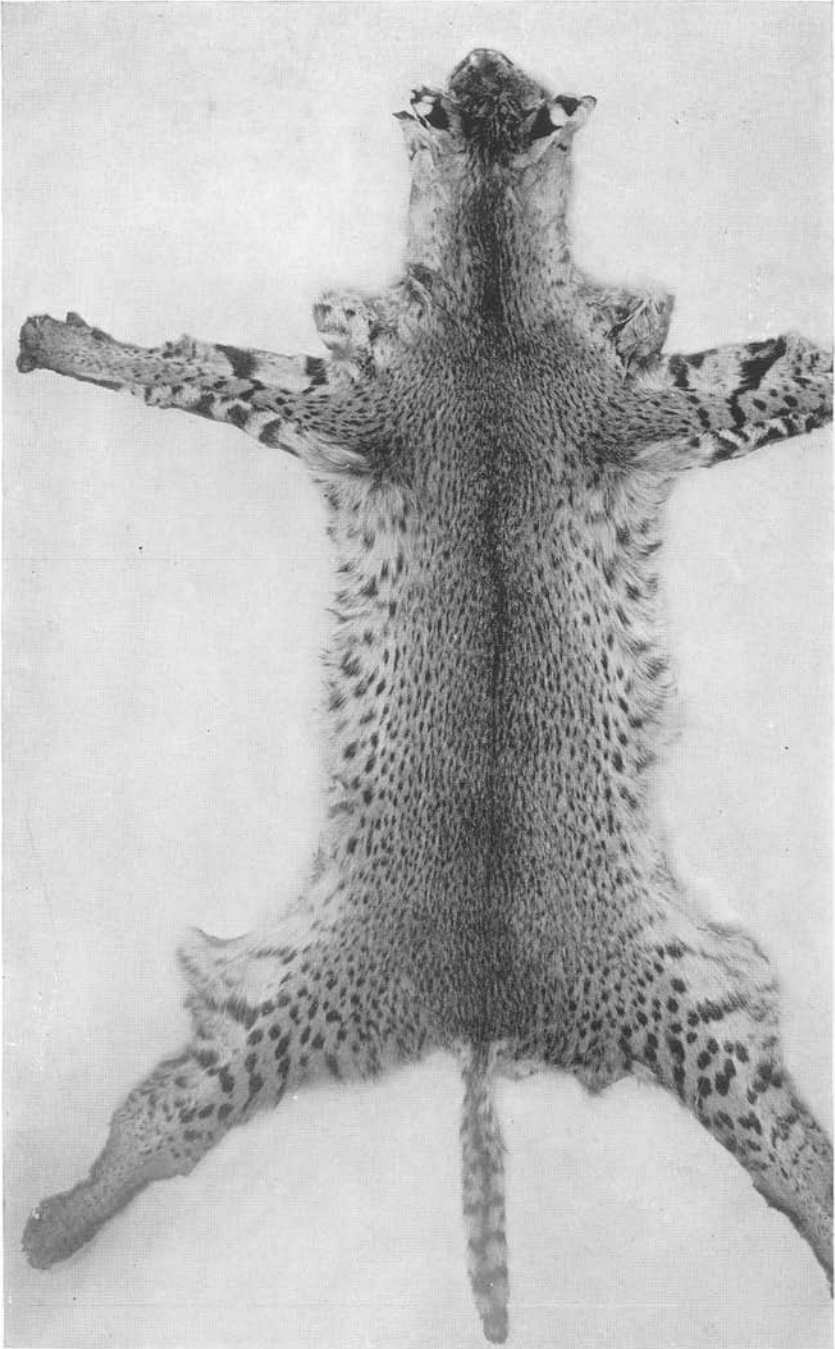


PLATE LXXIV

Fig. 1. *Leptailurus serval faradjius*, new subspecies. Male juvenile, Amer. Mus. No. 51973, Faradje, February 18, 1911. Total length of animal, 560 mm.

Fig. 2. *Profelis aurata cottoni* (Lydekker). Female adult, Amer. Mus. No. 51993, Medje, February 28, 1910. Total length of animal, 960 mm. Photographs from specimens in the flesh.



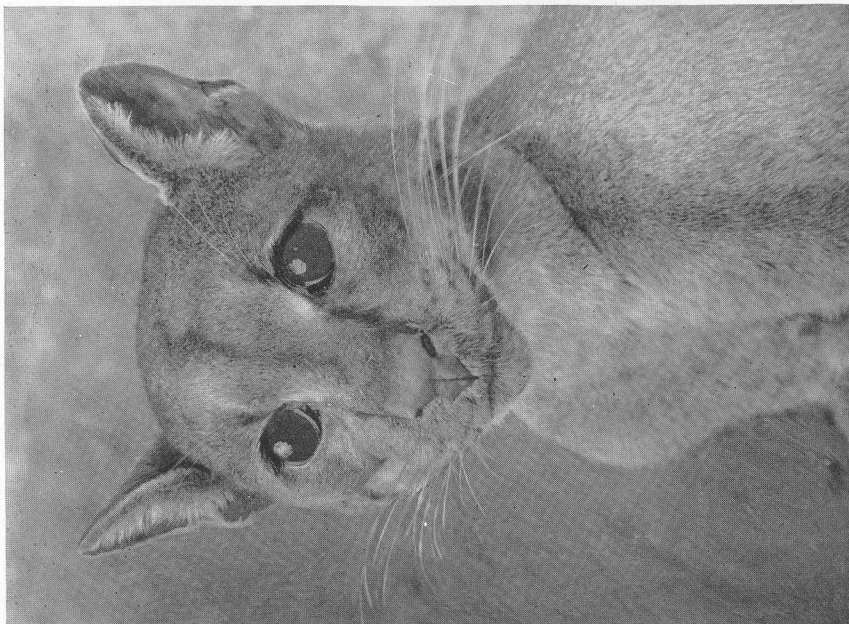
1



2

PLATE LXXV

Figs. 1 and 2. *Profelis aurata cottoni* (Lydekker). Female adult, Amer. Mus. No. 51998, Niapu, November 21, 1913. Total length of animal, 1010 mm. Photographs from specimens in the flesh.



I

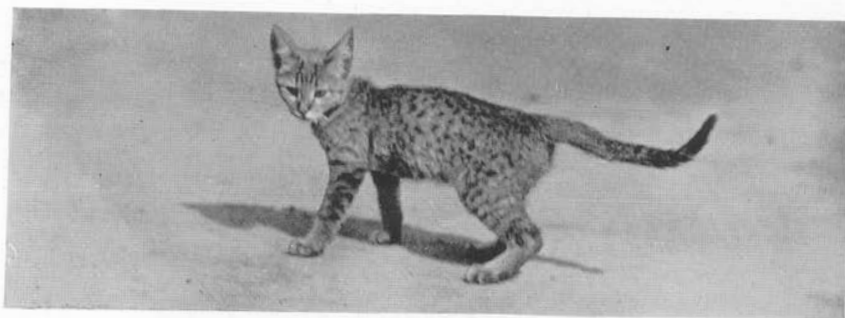


2

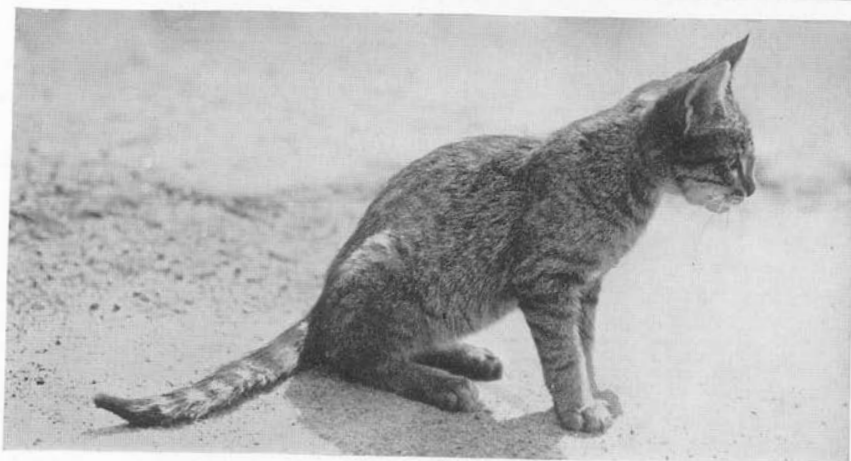
PLATE LXXVI

Figs. 1 and 2. *Felis ocreata rubida* Schwann. Half-grown male. Faradje, October 15, 1912. (Not in collection.) Photographs from live specimen.

Fig. 3. *Felis ocreata rubida* Schwann. Female adult, Amer. Mus. No. 51971, Faradje, November 19, 1911. Total length of animal, 800 mm. Photograph from specimen in the flesh.



1



2



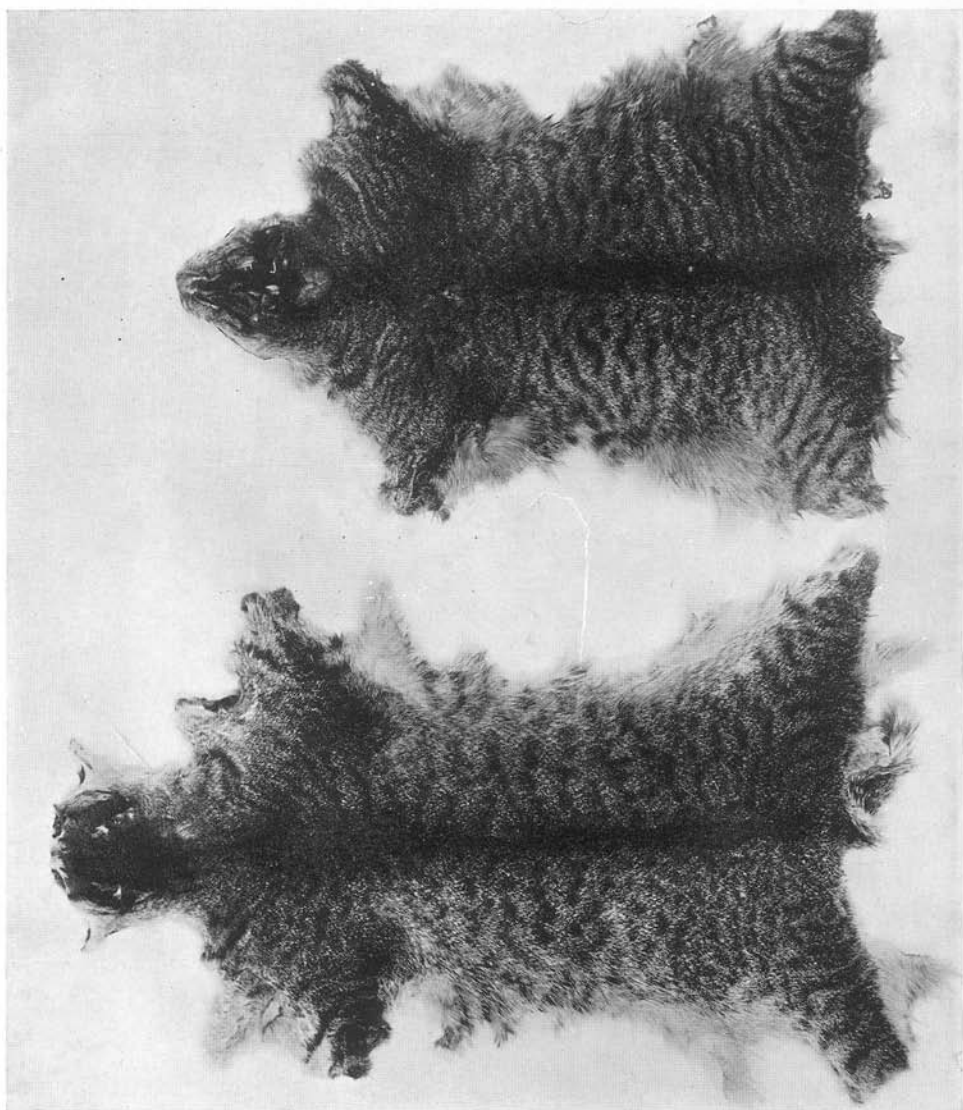
3

PLATE LXXVII

Fig. 1. *Felis ocreata rubida* Schwann. Amer. Mus. No. 51964, Faradje, November 26, 1911.

Fig. 2. *Felis ocreata rubida* Schwann. Amer. Mus. No. 51962, Faradje, November 26, 1911.

2

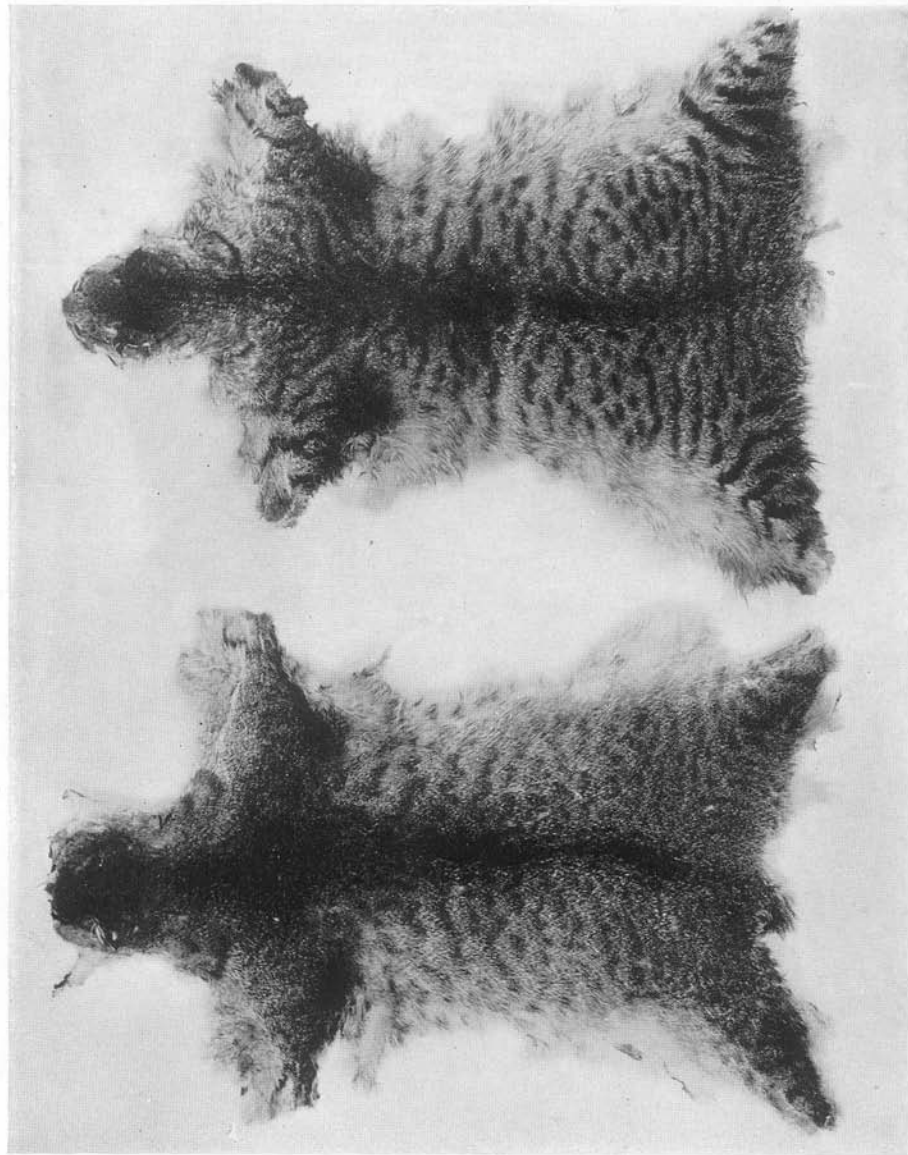


1

PLATE LXXVIII

Fig. 1. *Felis ocreata rubida* Schwann. Amer. Mus. No. 51969, Faradje, October 29, 1912.

Fig. 2. *Felis ocreata rubida* Schwann. Amer. Mus. No. 51965, Faradje, August 13 1912.



1

2

PLATE LXVII

Leptailurus serval faradjius, new subspecies. Amer. Mus. No. 51987, Faradje,
August 13, 1912.

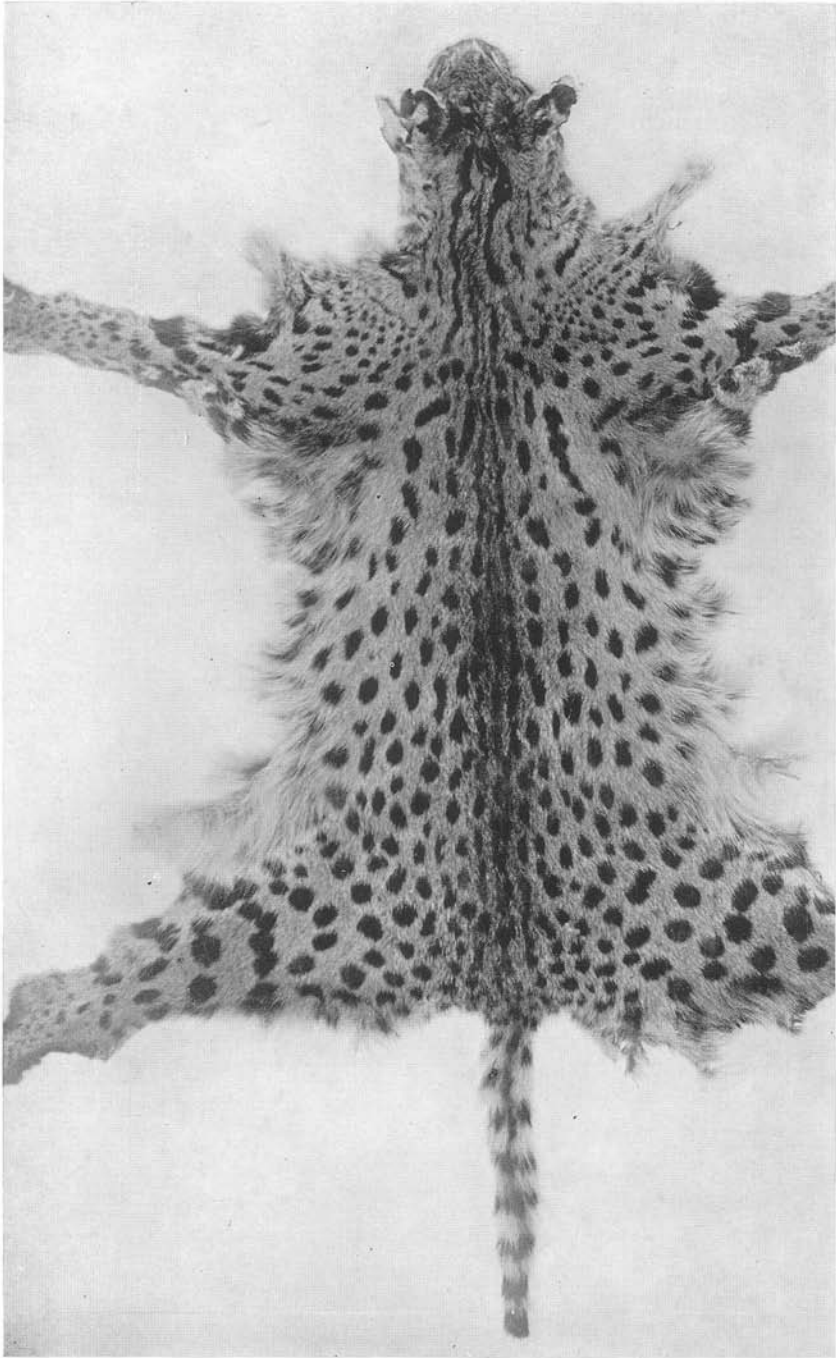


PLATE LXVIII

Leptailurus serval faradjius, new subspecies. Male adult, Amer. Mus. No.
51983, Faradje, June 6, 1911.

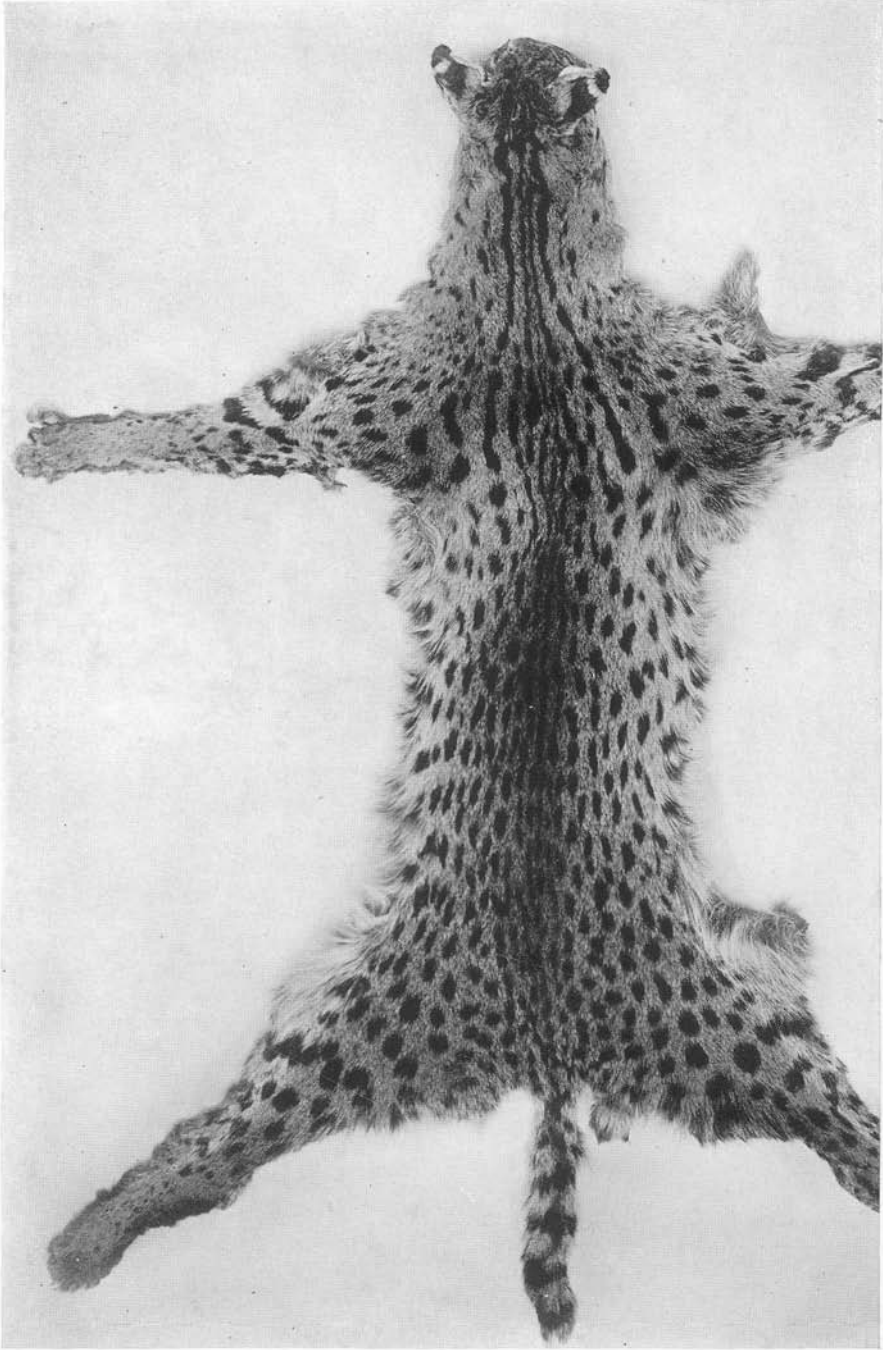
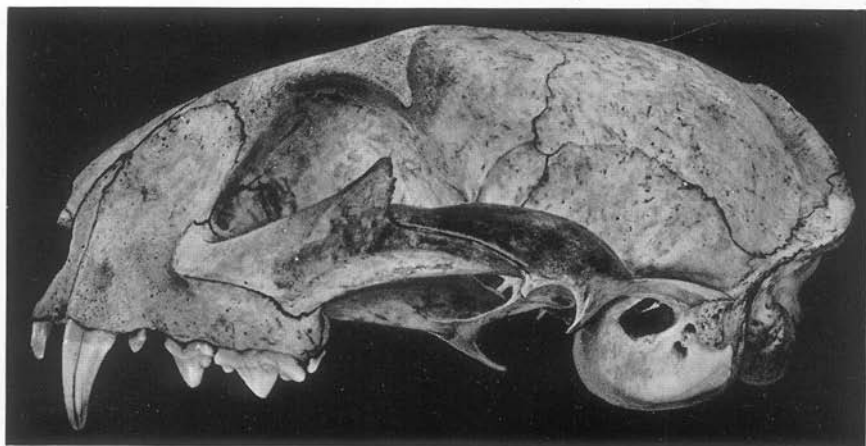
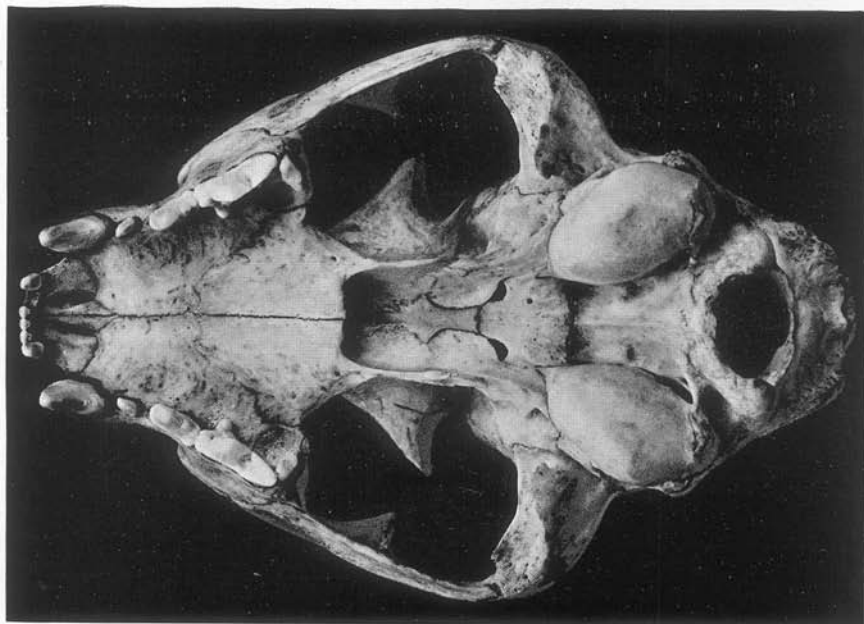


PLATE LXIX

Figs. 1 and 2. *Leptailurus serval faradjius*, new subspecies. Type skull. Male adult, Amer. Mus. No. 51990, Faradje, November 26, 1912. About natural size.



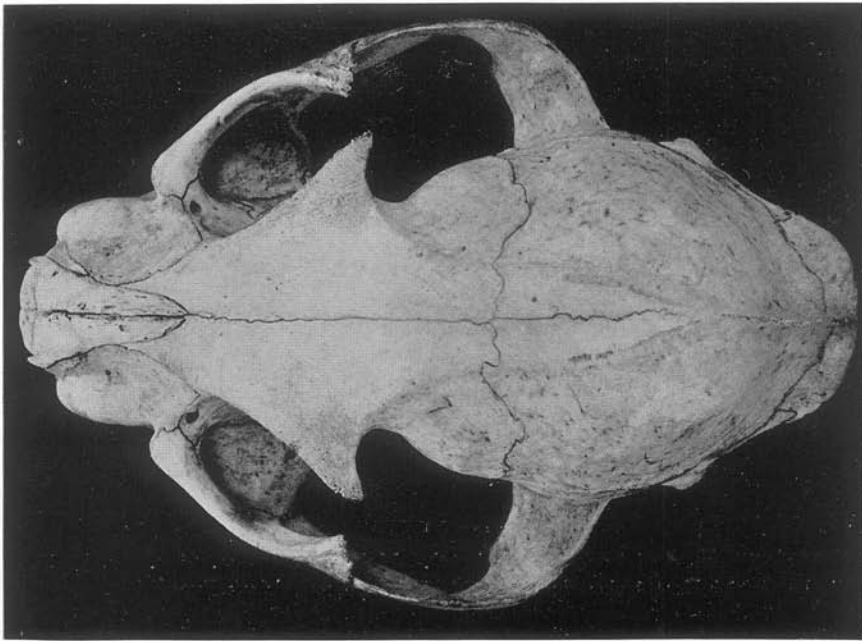
1



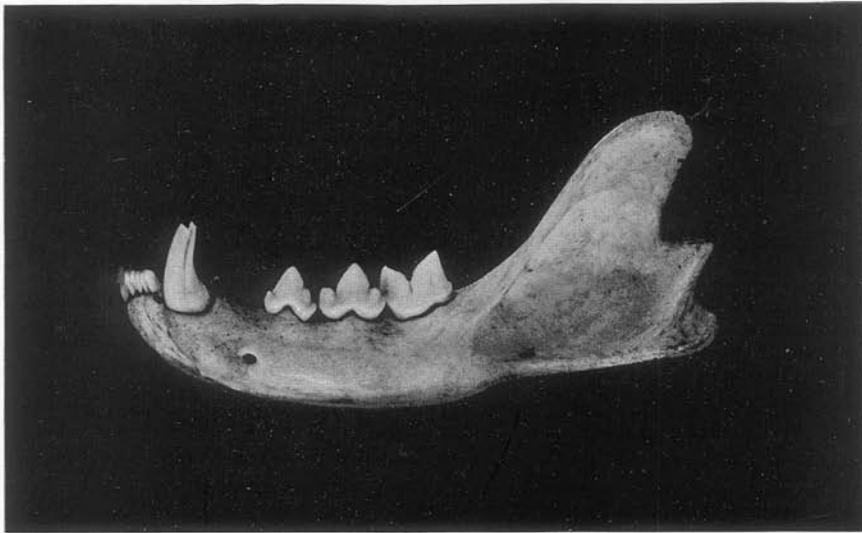
2

PLATE LXX

Figs. 1 and 2. *Leptailurus serval faradjius*, new subspecies. Type skull. Male adult, Amer. Mus. No. 51990, Faradje, November 26, 1912. About natural size.



1



2

PLATE LXXI

Leptailurus serval kempi (Wroughton). Male adult, Amer. Mus. No. 27837,
Kijabe, British East Africa, June 3, 1906. Tjader East African Expedition.

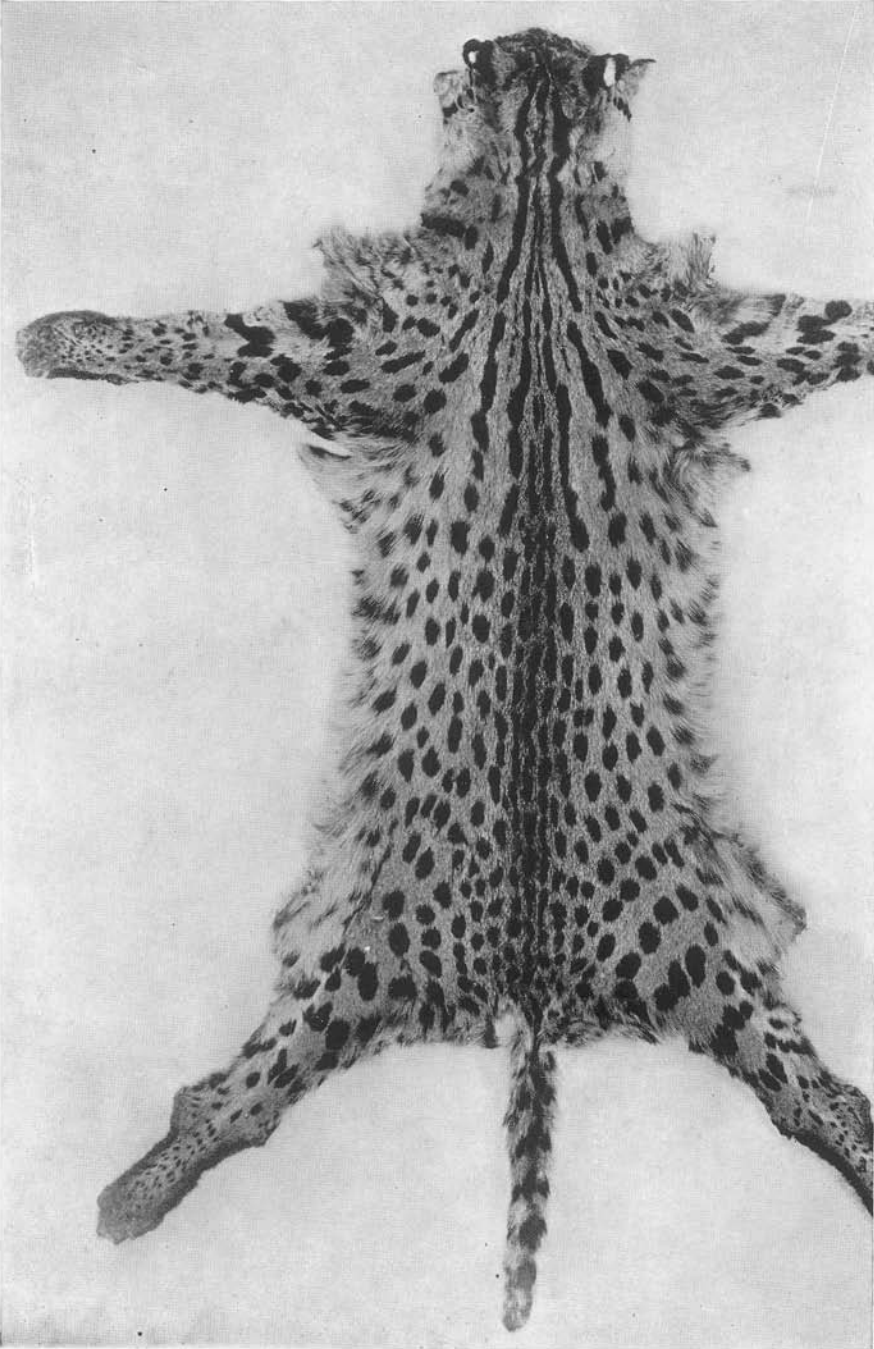


PLATE LXII

Panthera pardus iturensis, new subspecies. Male juvenile, Amer. Mus. No. 52037, Akenge, October 22, 1913. Total length of animal, 600 mm.

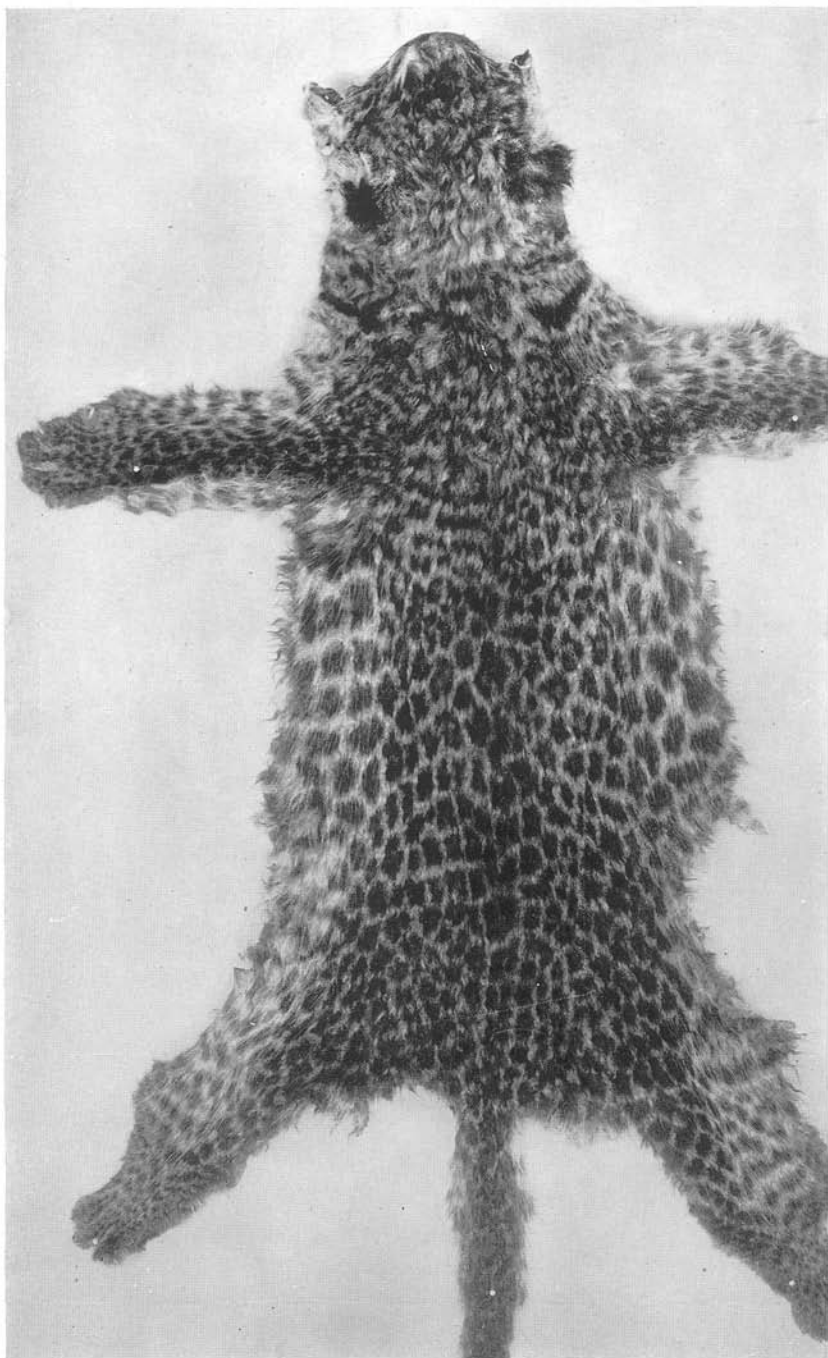


PLATE LXIII

Panthera pardus iturensis, new subspecies. Male juvenile, Amer. Mus. No. 52038, Akenge, October 22, 1913. Total length of animal, 590 mm.

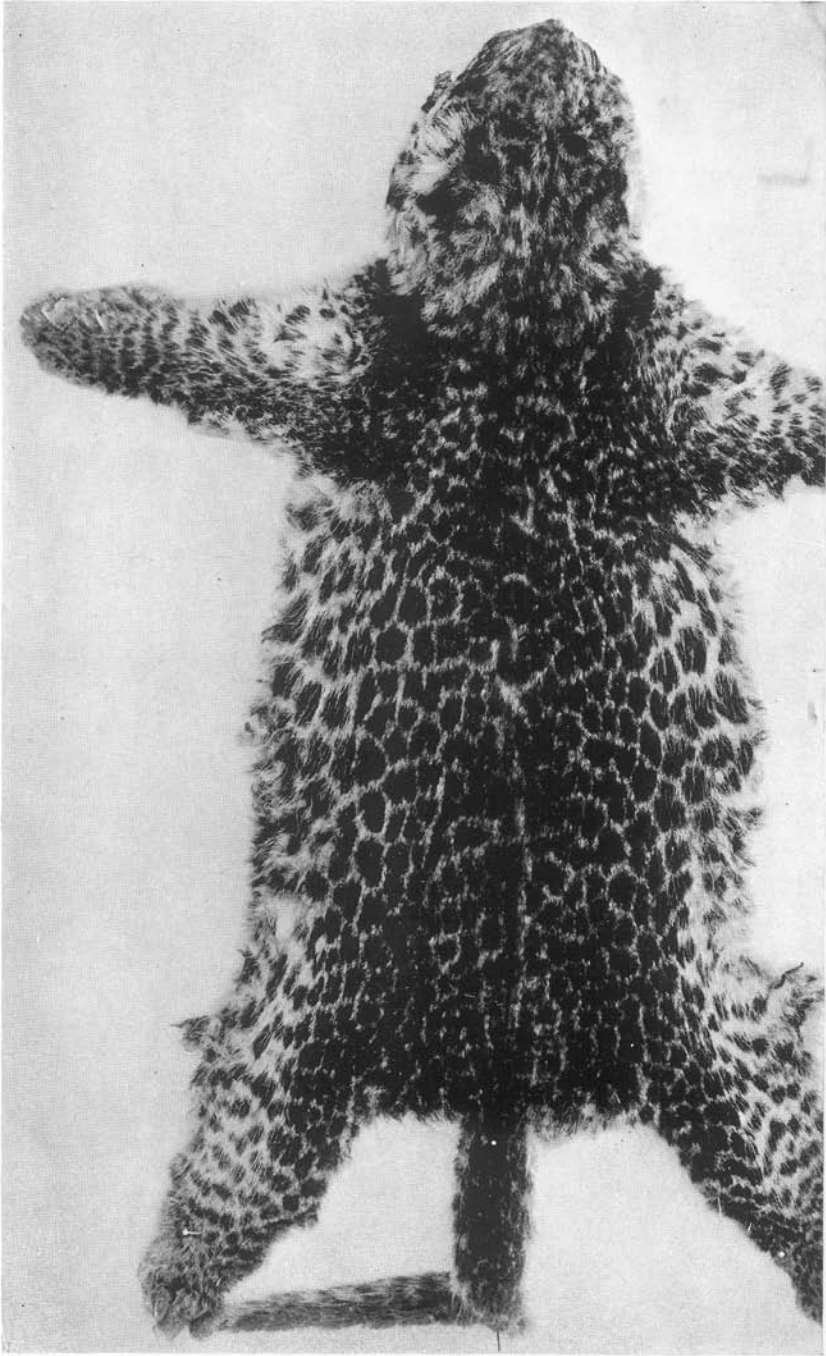


PLATE LXIV

Panthera pardus iturensis, new subspecies. Female juvenile, Amer. Mus. No. 52034, Akenge, September 17, 1913.

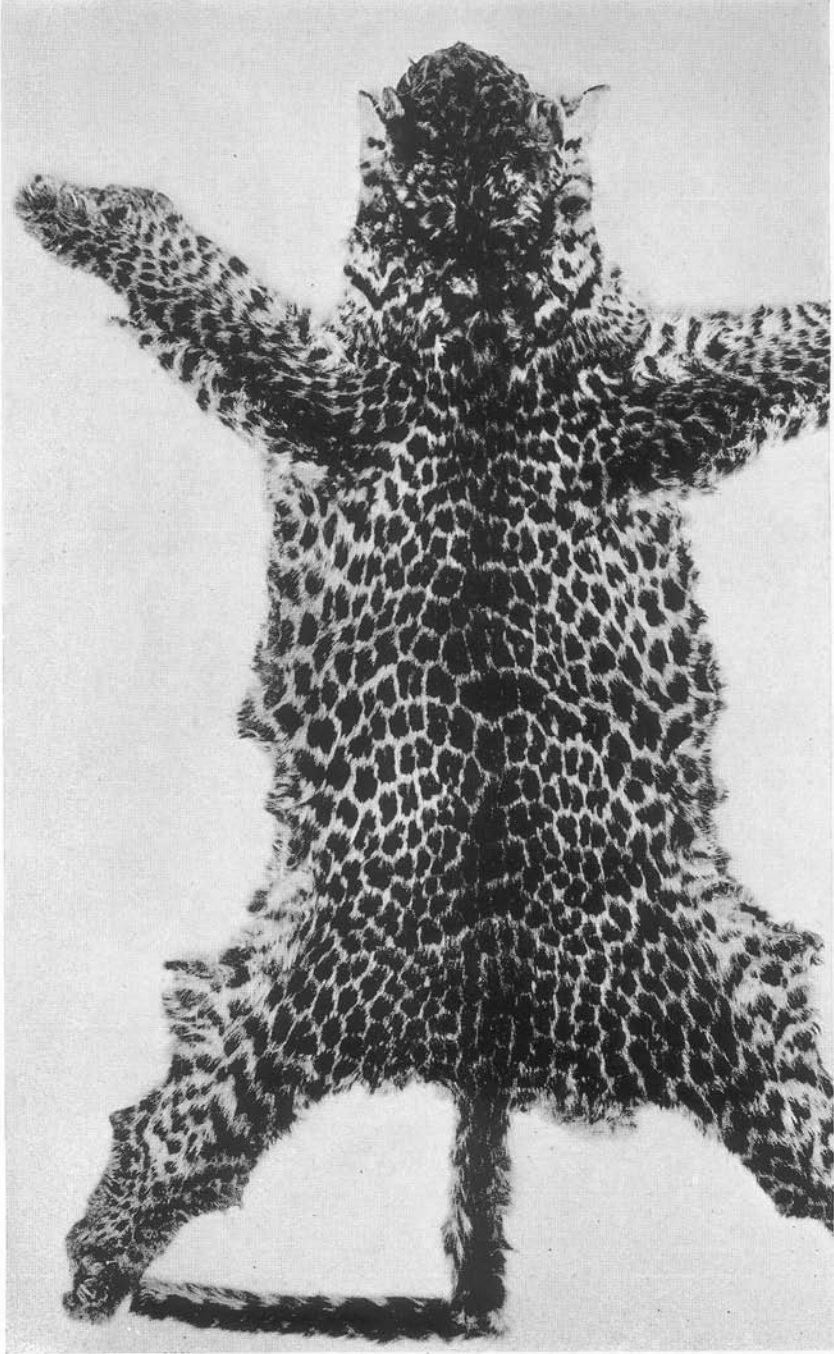


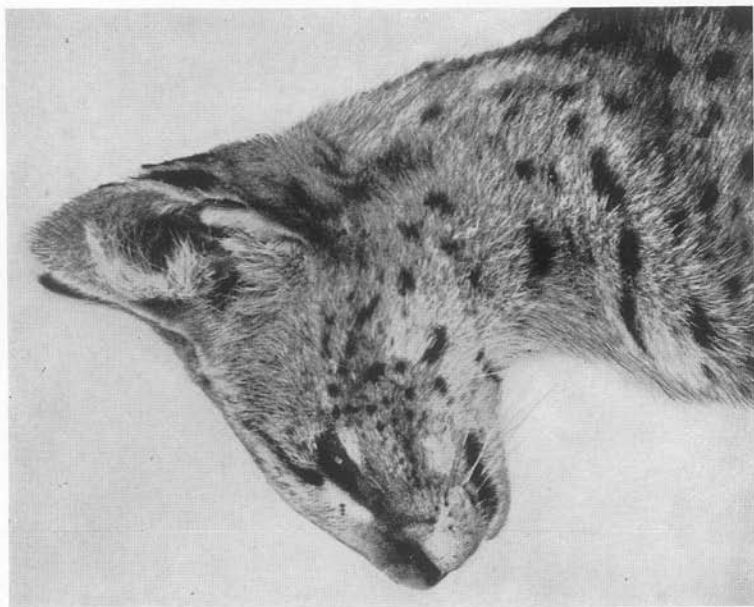
PLATE LXV

Leptailurus serval faradjius, new subspecies. Type. Male adult, Amer. Mus. No. 51990, Faradje, November 26, 1912. Total length of animal, 1102 mm. Photograph from specimen in the flesh.

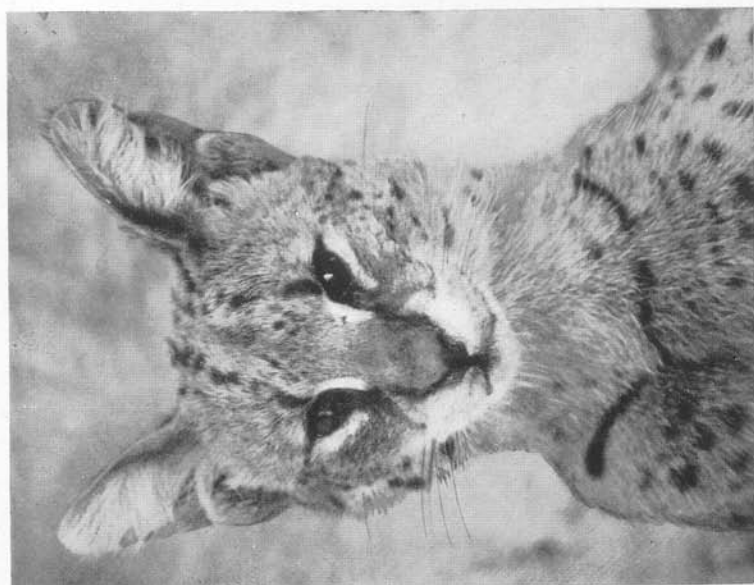


PLATE LXVI

Figs. 1 and 2. *Leptailurus serval faradjius*, new subspecies. Type. Male adult, Amer. Mus. No. 51990, Faradje, November 26, 1912. Total length of animal, 1102 mm. Photographs from specimens in the flesh.



2



1

PLATE LVII

Panthera pardus iturensis, new subspecies. Female adult, Amer. Mus. No. 52026, Niapu, December 16, 1913. Total length of animal, 1790 mm.

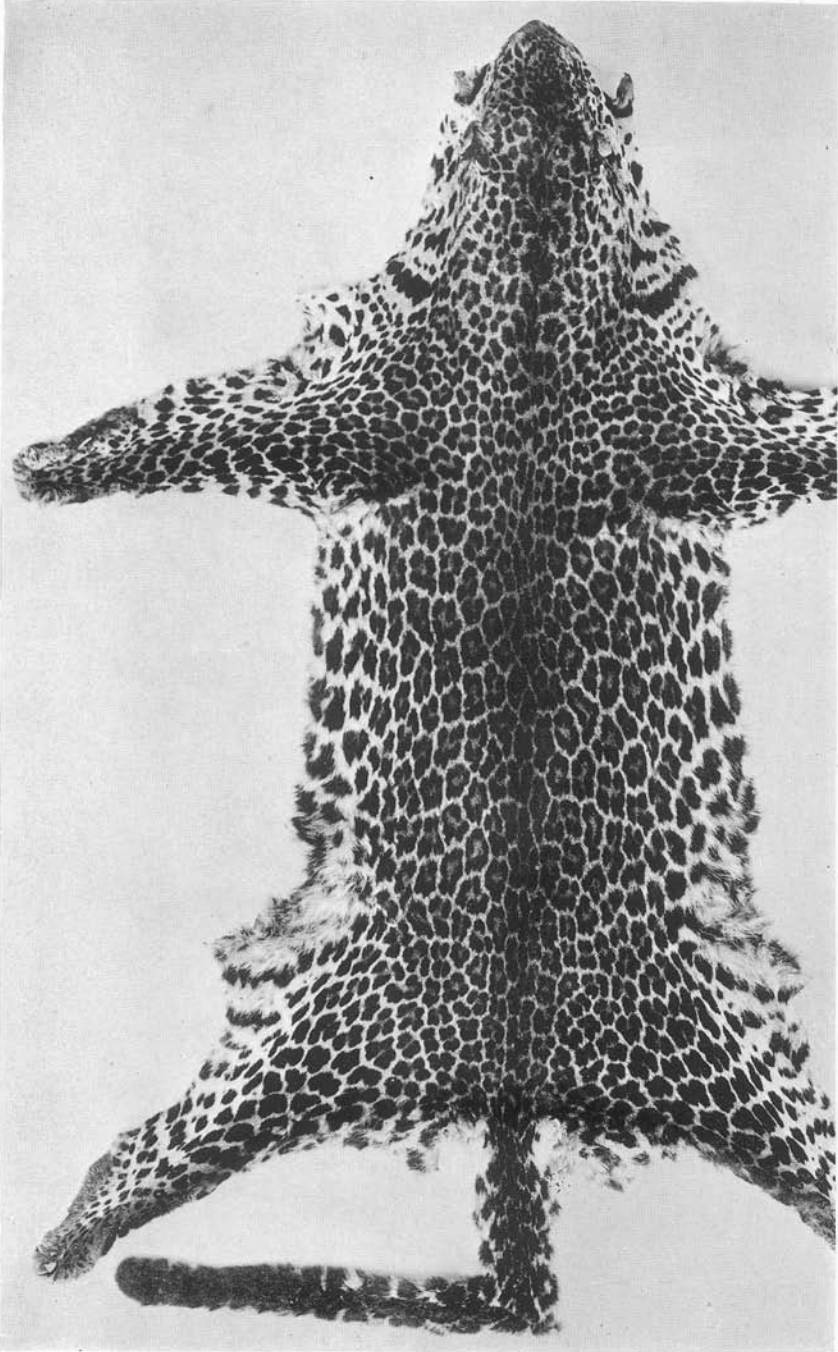


PLATE LVIII

Panthera pardus iturensis, new subspecies. Male adult, Amer. Mus., No. 52027,
Niapu, December 26, 1913.

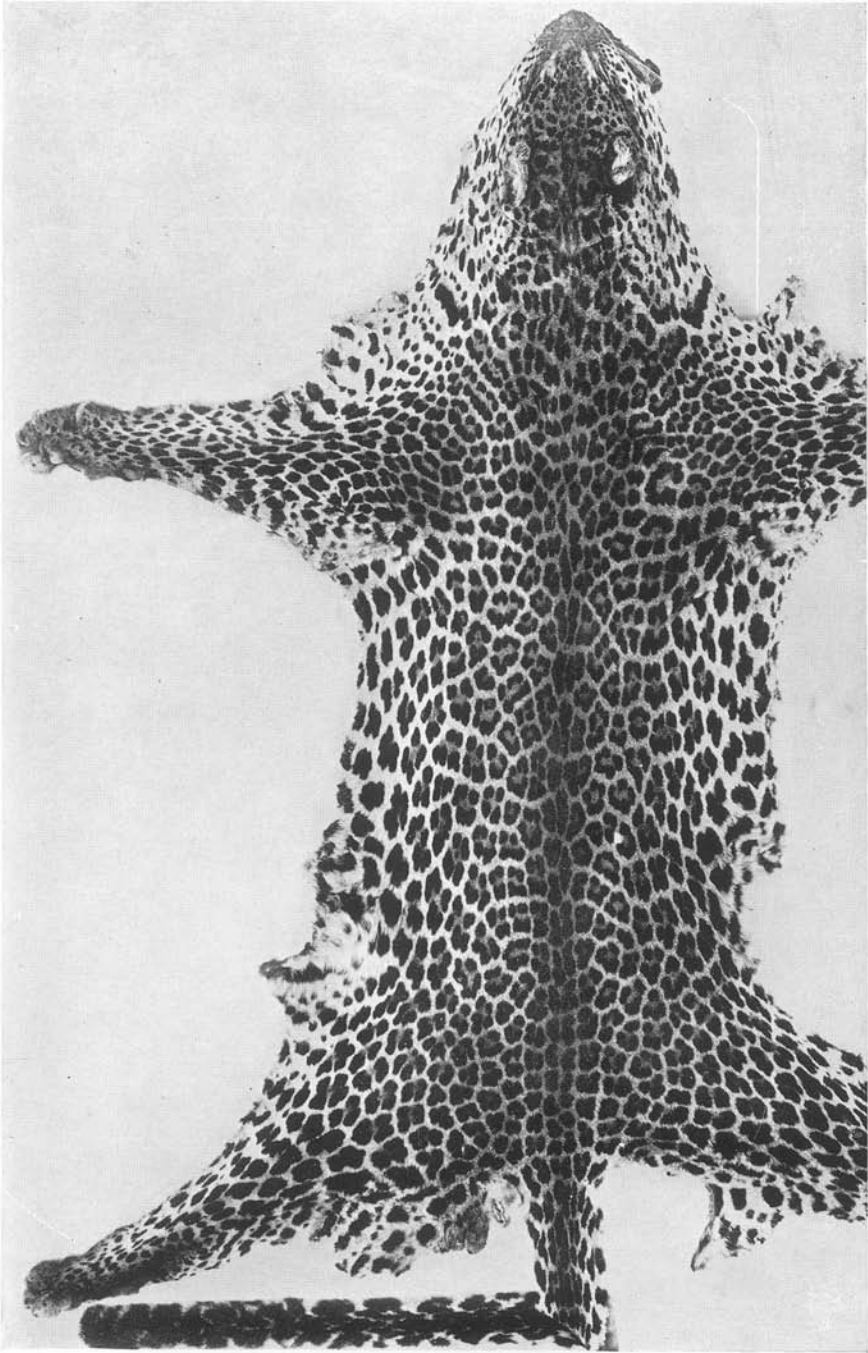


PLATE LIX

Panthera pardus iturensis, new subspecies. Male adult, Amer. Mus. No. 52031, Niapu, February 11, 1914. Total length of animal, 2000 mm.

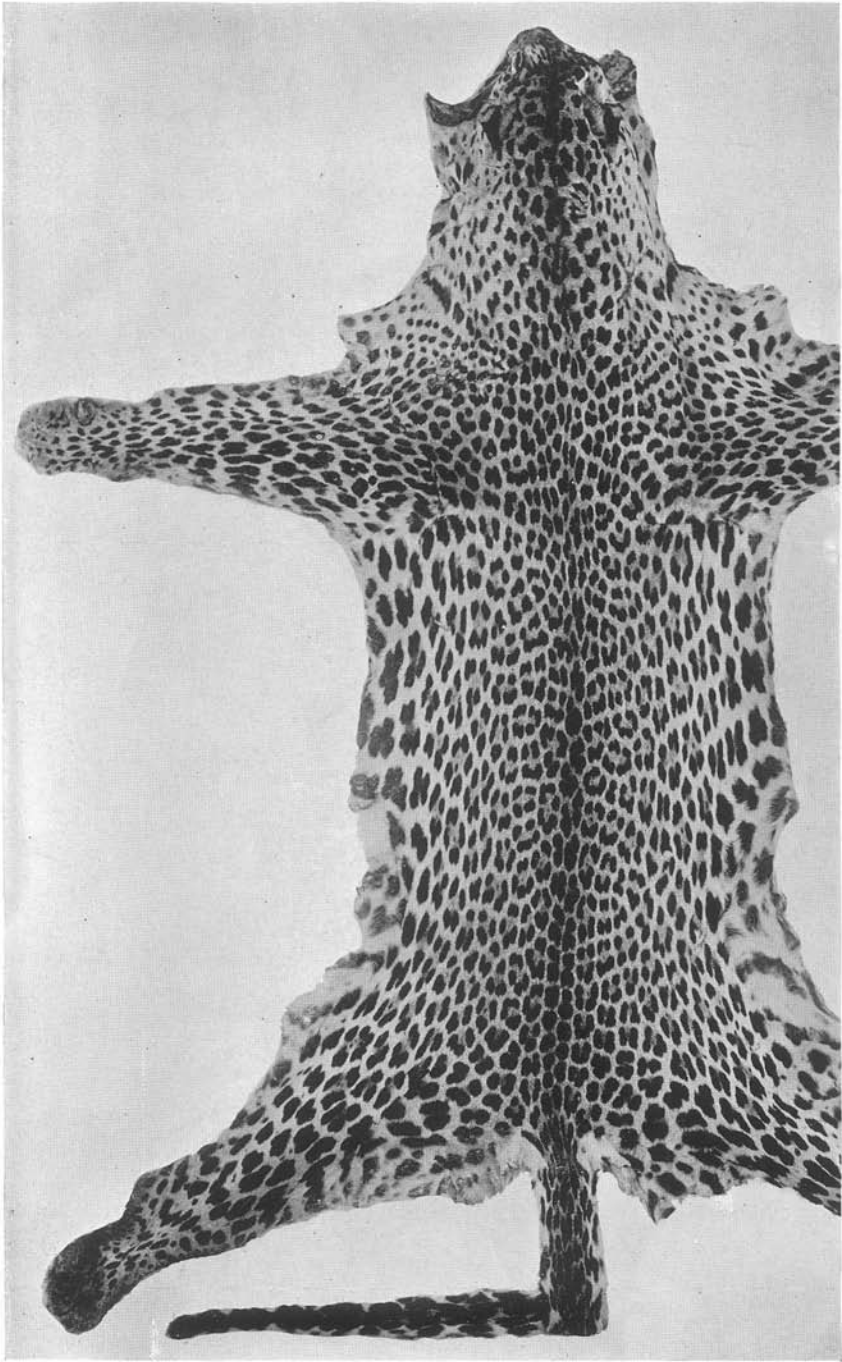


PLATE LX

Panthera pardus iturensis, new subspecies. Female adult, Amer. Mus. No. 52030, Niapu, January 8, 1914.



PLATE LXI

Panthera pardus iturensis, new subspecies. Male juvenile, Amer. Mus. No. 52036, Akenge, October 9, 1913.



PLATE LII

Panthera pardus chui (Heller). Adult male, Amer. Mus. No. 34747, Elgeyo Forest, British East Africa, at 6000 feet, January 23, 1913. Total length of animal, 1582 mm. Rainsford Collection.

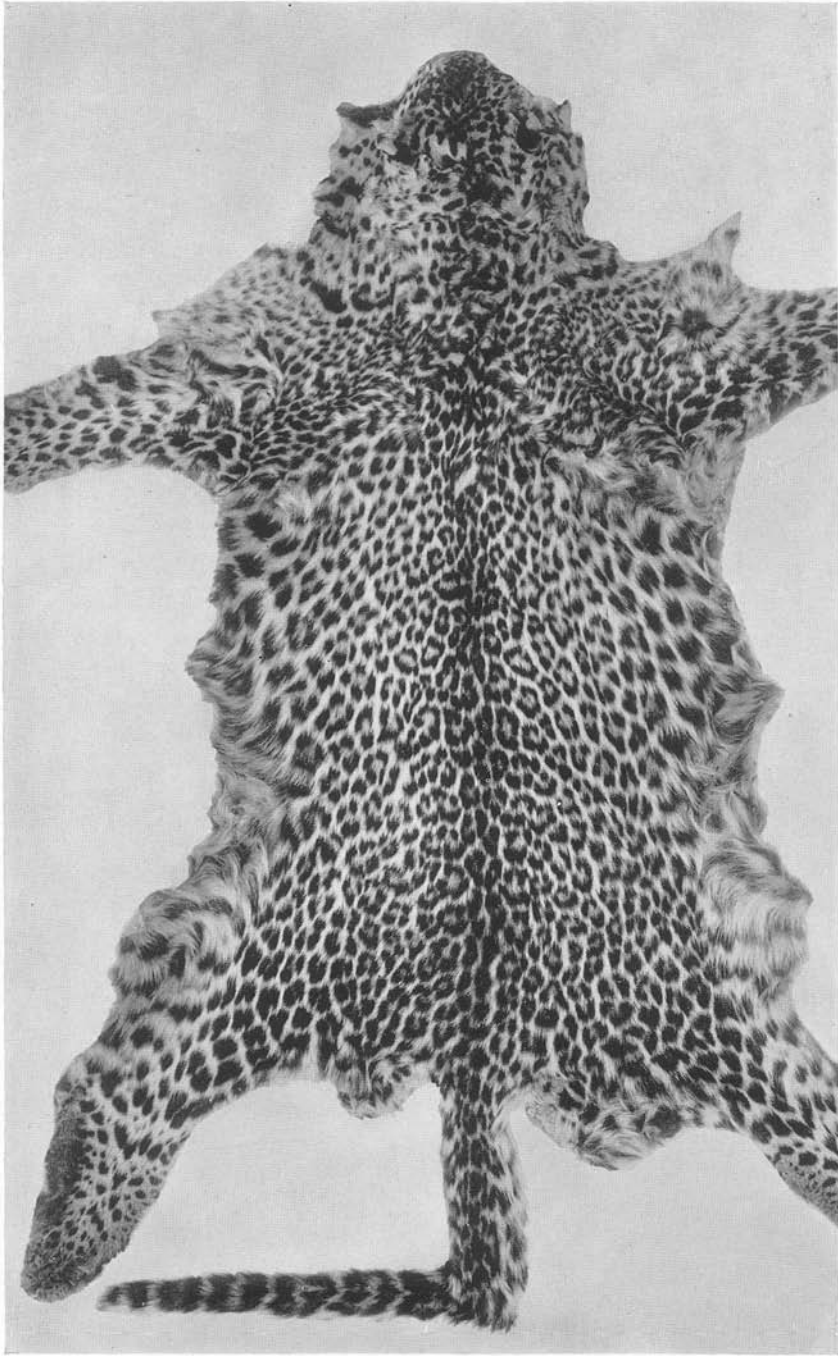


PLATE LIII

Panthera pardus chui (Heller). Female juvenile, Amer. Mus. No. 52001,
Faradje, February 8, 1911. Total length of animal, 635 mm.

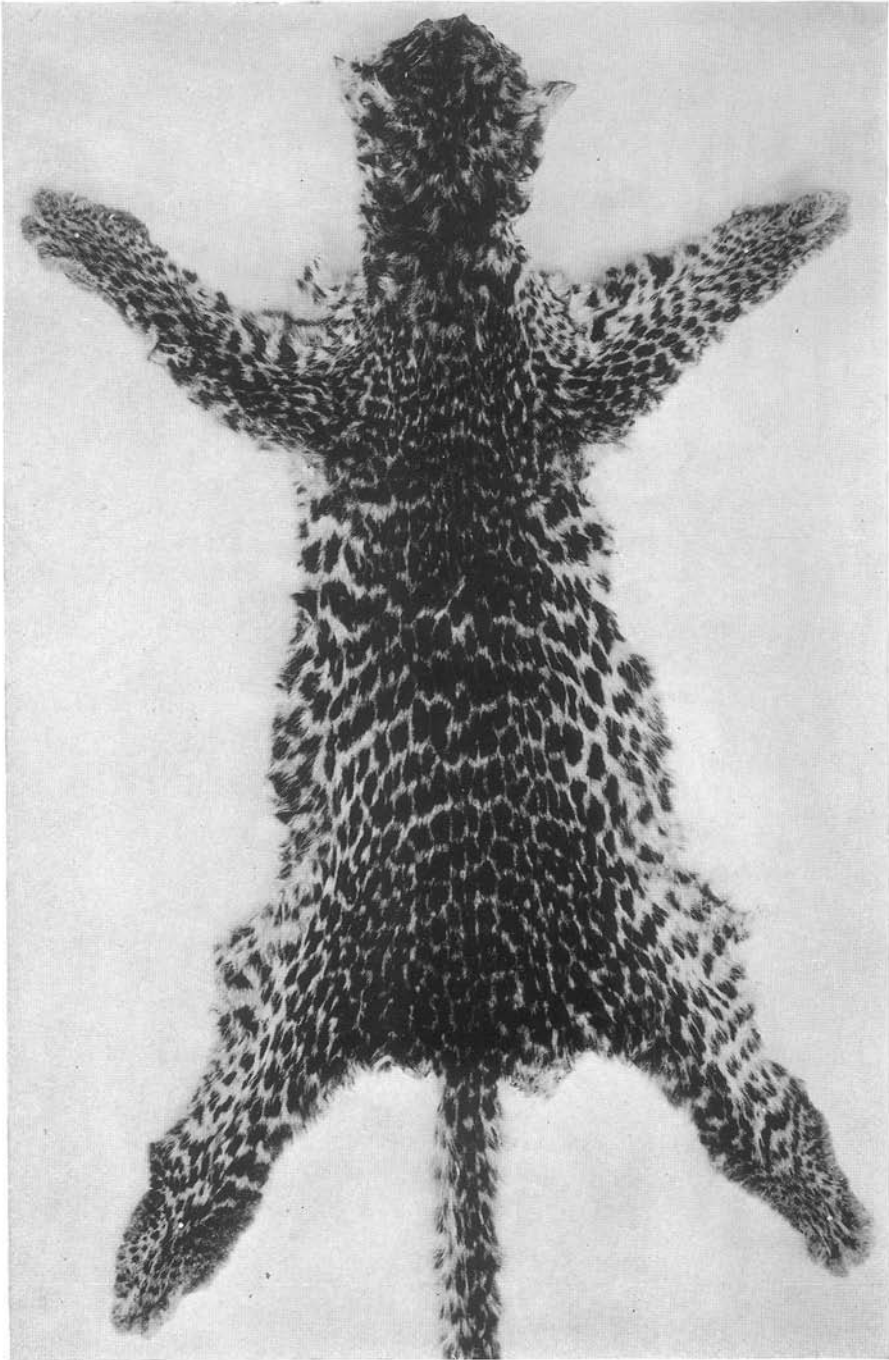


PLATE LIV

Panthera pardus chui (Heller). Female juvenile, Amer. Mus. No. 51070, Faradje, February 20, 1912. Total length of animal, 480 mm.



PLATE LV

Panthera pardus iturensis, new subspecies. Male adult, Amer. Mus. No. 52043, Gamangui, February 6, 1910. Total length of animal, 2100 mm.



PLATE LVI

Panthera pardus iturensis, new subspecies. Male adult, Amer. Mus. No. 52032,
Medje, June 16, 1914.

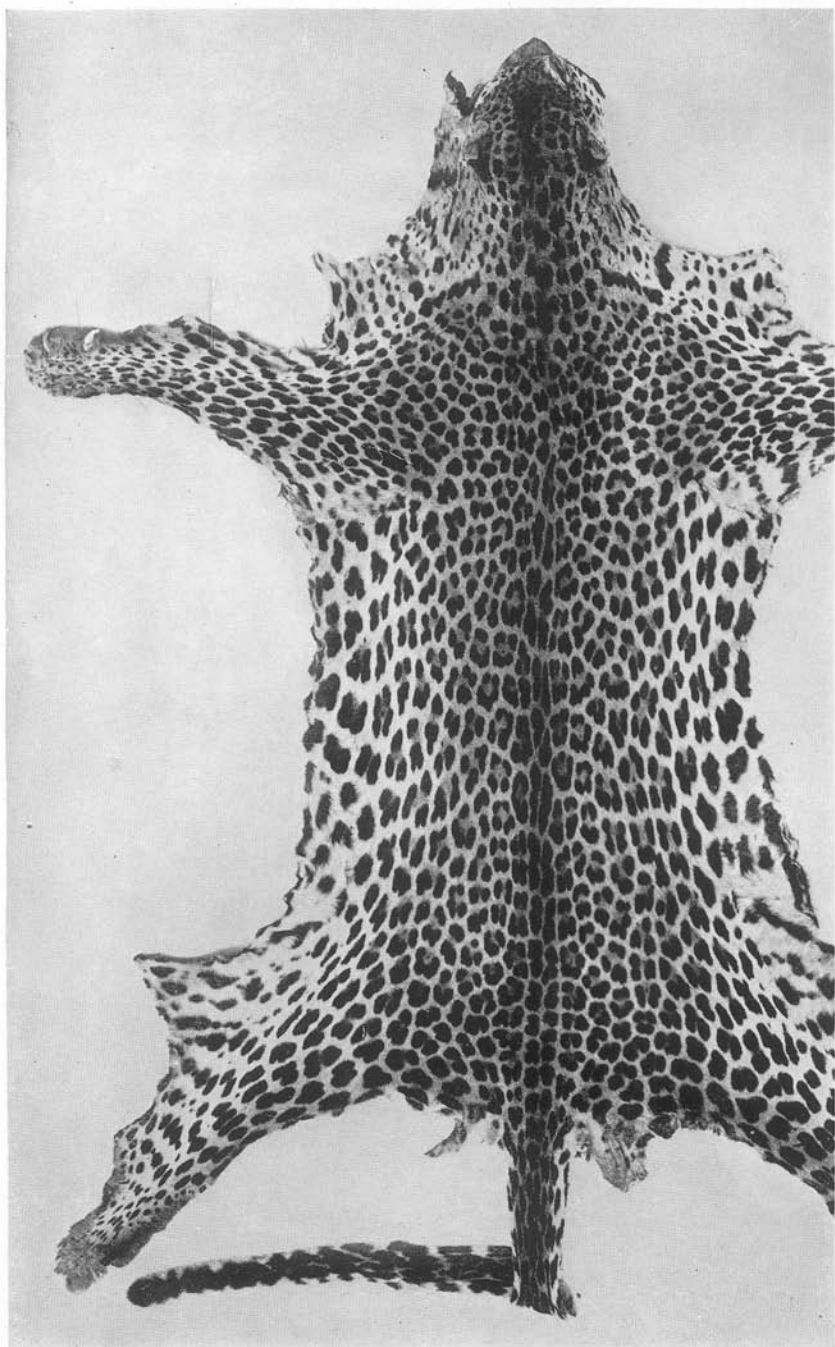


PLATE XXXVII

Leo leo azandicus, new subspecies. Type. Male adult, Amer. Mus. No. 52084, Vankerckhovenville, April 18, 1912. Total length of animal, 2860 mm. Photograph from specimen in the flesh.

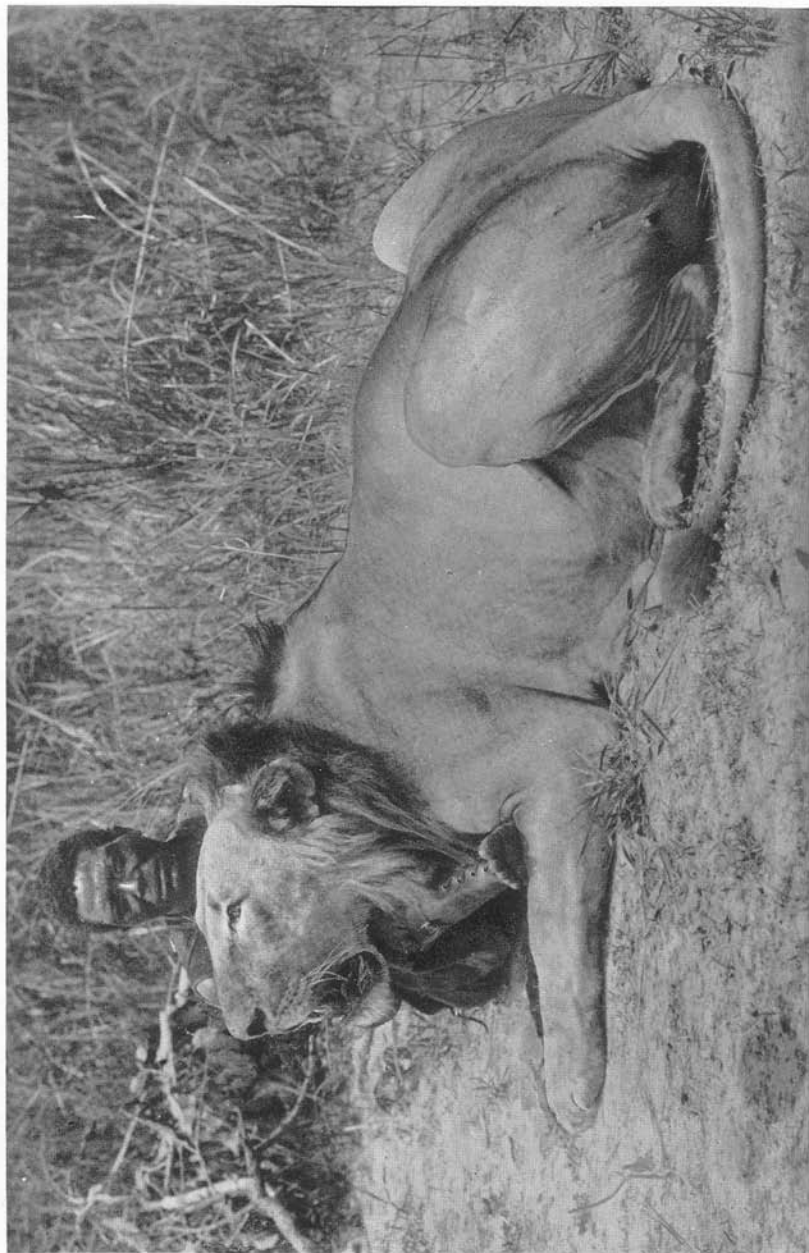


PLATE XXXVIII

Fig. 1. *Leo leo azandicus*, new subspecies. Male adult, Amer. Mus. No. 52077, Faradje, January 5, 1912. Total length of animal, 2730 mm.

Fig. 2. *Leo leo azandicus*, new subspecies. Female adult, Amer. Mus. No. 52073, Faradje, June 6, 1911. Total length of animal, 2240 mm. Photographs from specimens in the flesh.



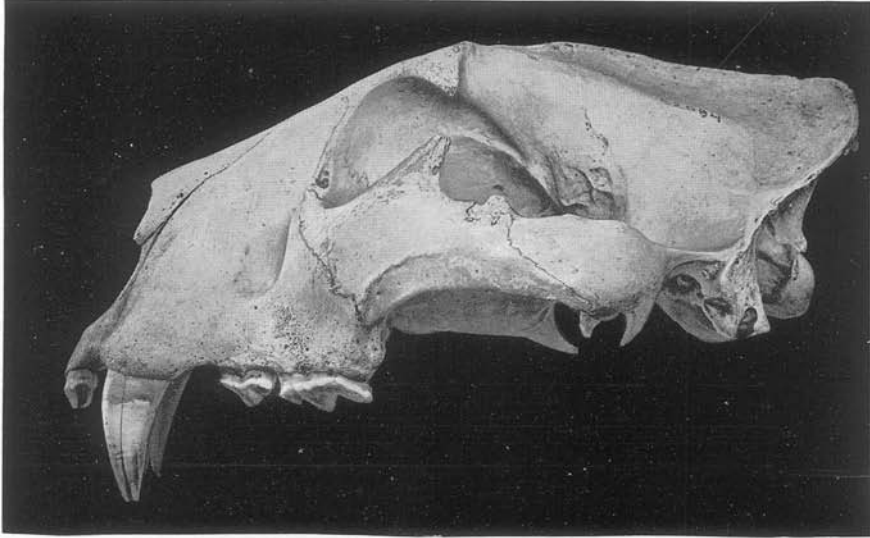
1



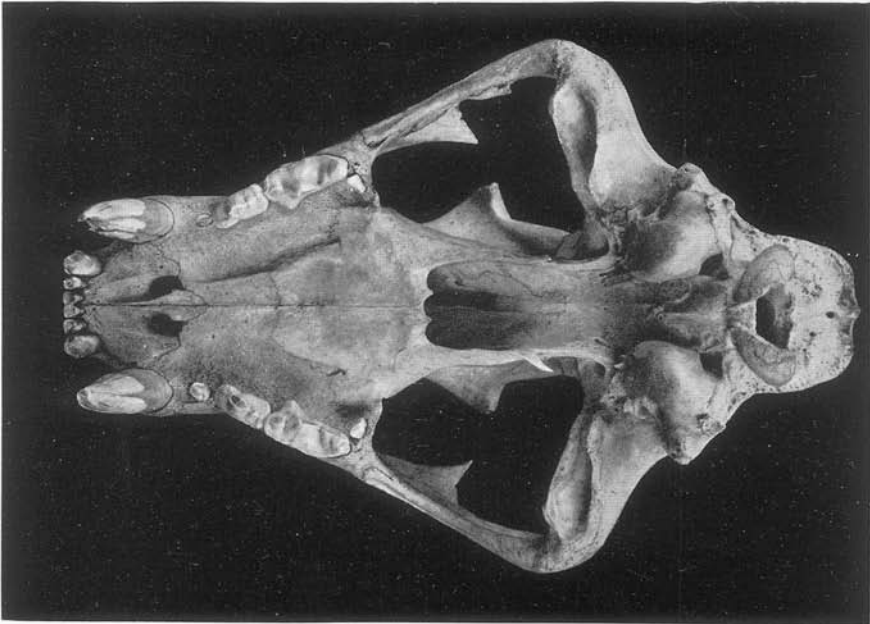
2

PLATE XXXIX

Figs. 1 and 2. *Leo leo azandicus*, new subspecies. Type skull. Male adult, Amer. Mus. No. 52084, Vankereckhovenville, April 18, 1912. About one-third natural size.



1



2

PLATE XL

Figs. 1 and 2. *Leo leo azandicus*, new subspecies. Type skull. Male adult, Amer. Mus. No. 52084, Vankerckhovenville, April 18, 1912. About one-third natural size.

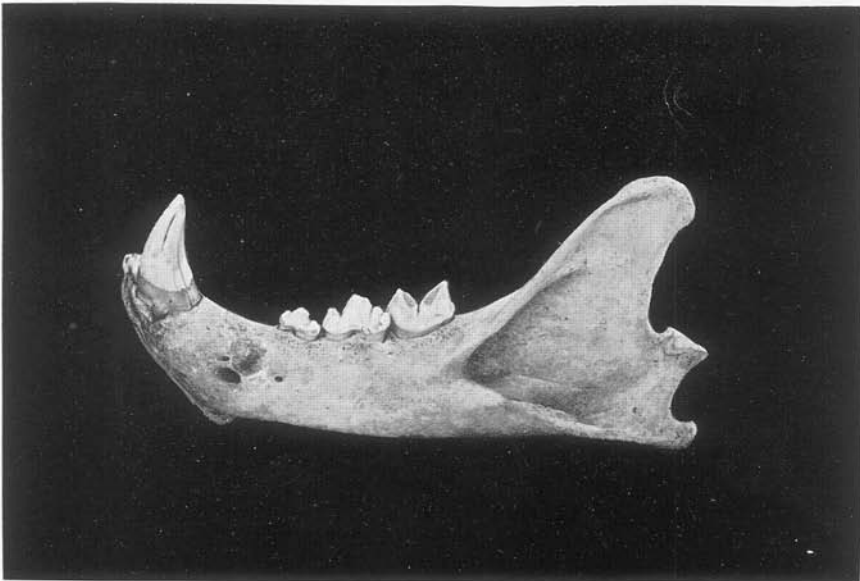
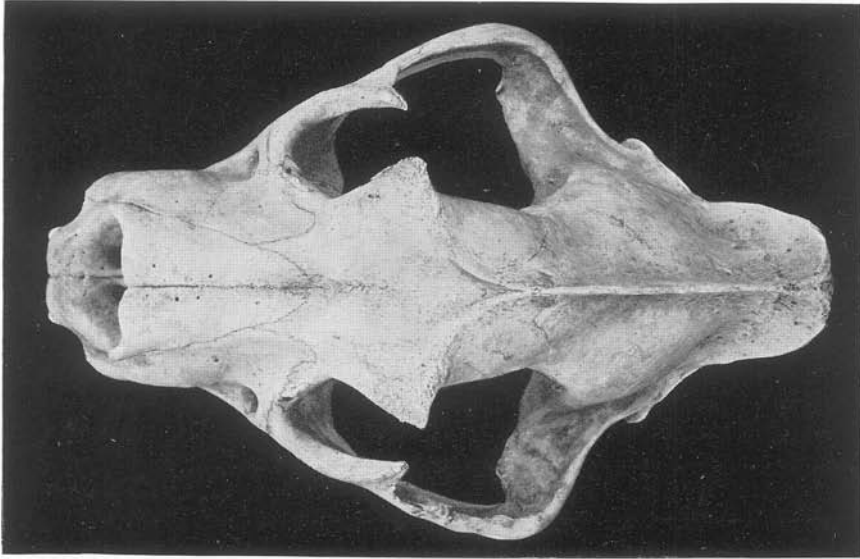


PLATE XLI

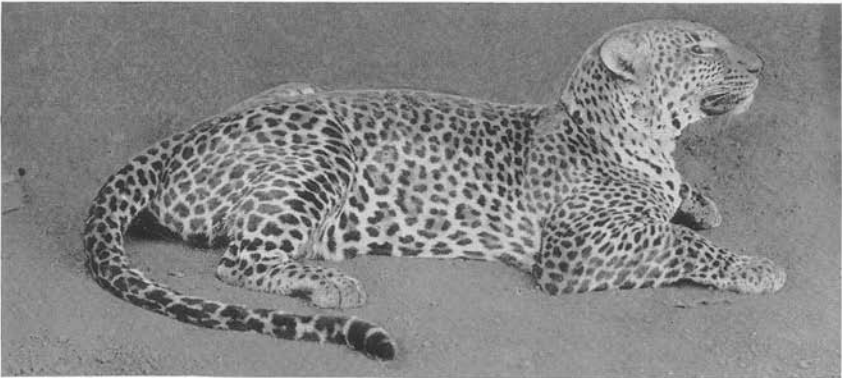
Fig. 1. *Panthera pardus chui* (Heller). Between N'Zoia and Elgon, 1914. Photograph of specimen in the flesh, by L. Bayer.

Fig. 2. *Panthera pardus chui* (Heller). Male adult, Amer. Mus. No. 52006, Faradje, March 28, 1911. Total length of animal, 2120 mm. Photograph of specimen in the flesh.

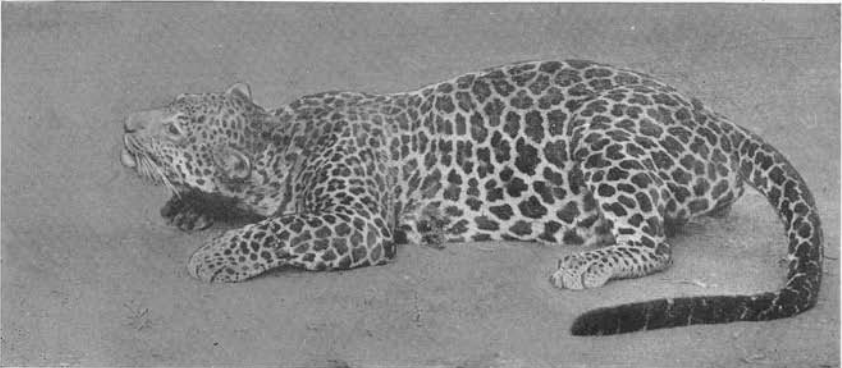
Fig. 3. *Panthera pardus iturensis*, new subspecies. Male adult, Amer. Mus. No. 52043, Gamangui, February 6, 1910. Total length of animal, 2100 mm. Photograph of specimen in the flesh.



1



2



3